

Summary of Water Supply Conditions as of 04/14/05

(Click on hyperlinks to view information graphically.)

Precipitation for the month of April averages 3.86 inches per the Northern Sierra 8-Station Index. At approximately, half way through the month, we have received 2.10 inches. The driest April on record was 1939 with only 0.43 inches while the wettest was 1948 at 13.00 inches. In 2003, we received 10.52 inches. Cumulatively, we are at 87% of the water year average and 96% of the end of April average.

Reservoir Storage half way through April is 108% of average for the CVP reservoirs. Trinity is at 100% of its 15-year average and Shasta storage is 108% of its 15-year average. Folsom Reservoir was at 116% of its 15-year average, while New Melones was at 115% of its 15-year average.

At the end of March, Folsom Reservoir was encroached into flood control space. Pulse flows for fish were rejected. Releases at Nimbus were as high as 16,000 cfs which is twice the capacity of Folsom Powerplant and four times the capacity of Nimbus Powerplant. Over 66 thousand-acre-feet of storage was spilled during the month of March and at this point in April, encroachment is still nearly 34 thousand-acre-feet.

River Releases at Lewiston releases were 108% of their 15-year median while Shasta releases were at 68% of their 15-year median. On the American, releases were 161% percent of their median and on the Stanislaus they were at 38% of their 15-year median.

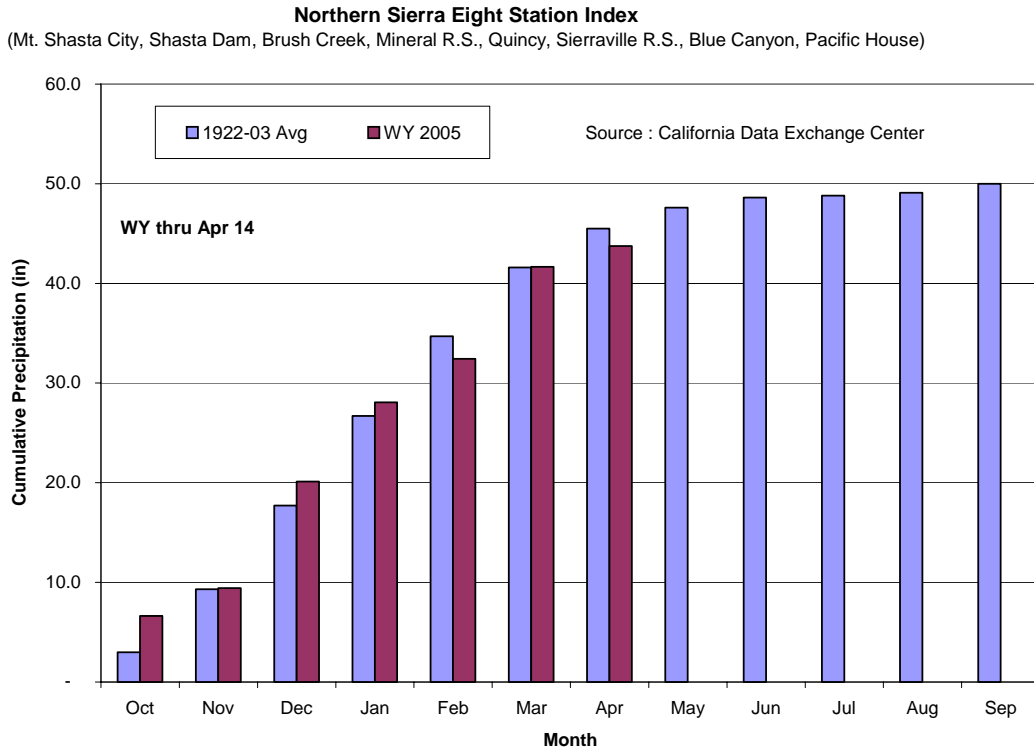
The Trinity River Flows will increase in late April. The level of flow depends upon the October through March inflow to Trinity Reservoir and the April through September forecasted inflow. The April through September inflow forecast is based upon April 1st conditions and for both the 50% and 90% exceedence levels, the forecasts are “normal.” This will mean 647 thousand-acre-feet total for the water year and flows in excess of Trinity Powerplant capacity for May 7th through May 22nd.

Water Supply indices based upon April 1st conditions were posted on April 14th. The 50% exceedence forecast was projected to be “below normal” at 15.6 million-acre-feet or 82% of the average of 19.1 while the 90% exceedence forecast was also projected to be “below normal” at 14.1 million-acre-feet or 74% of the average. As stated above, the Trinity water year type is “normal” for both the 50% and 90% exceedence levels. Even the San Joaquin River 60-20-20 index is “wet” for both these exceedence levels.

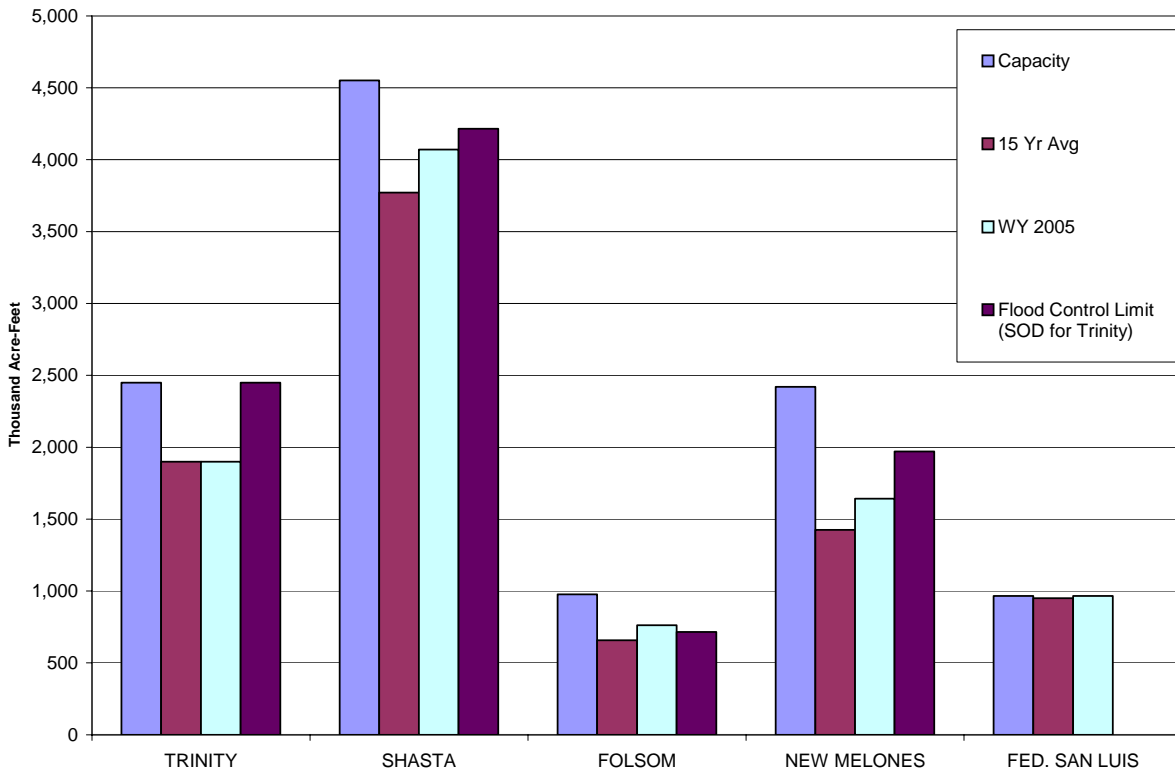
		04/14/05	03/31/05	Change
8 Station Index	(% of WY Avg to Date)	56%	51%	5%
Snow Pack -	North	126%	123%	3%
	Central	135%	134%	1%
		04/14/05	03/31/05	Change
Reservoir Storage - (Thousand AF)	Trinity	1,899	1,842	57
	Shasta	4,070	3,827	243
	Folsom	761	674	87
	New Melones	1,642	1,578	64
	Federal San Luis	965	966	(1)
		04/14/05	03/31/05	Change
River Releases - (Mean Daily cfs)	Trinity	323	326	(3)
	Sacramento	3,742	3,783	(41)
	American	4,030	8,239	(4,209)
	Stanislaus	228	229	(1)
		04/14/05	03/31/05	Change
Reservoir Inflow - (WY to Date in TAF)	Trinity	605	530	75
	Shasta	3,148	2,819	329
	Folsom	1,512	1,305	207
	New Melones	616	534	82
		04/14/05	03/31/05	Change
Precipitation (accumulated in.)	Trinity at Fish Hatchery	26.93	25.28	1.65
	Sacramento at Shasta Dam	53.60	51.91	1.69
	American at Blue Canyon	56.16	52.75	3.41
	Stanislaus at New Melones	36.58	34.94	1.64

Precipitation

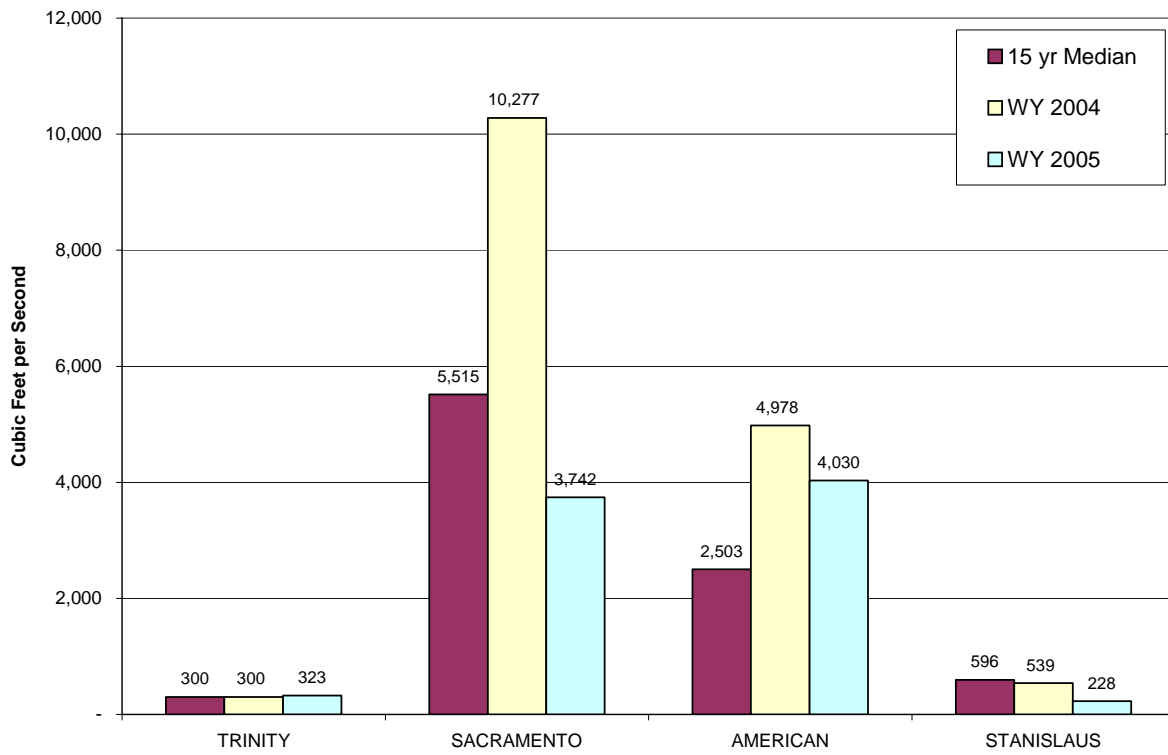
[Return to Summary](#)



Reservoir Storage as of APRIL 14, 2005 based on USBR Daily CVP Water Supply Report



Reservoir Releases as of APRIL 14, 2005 based on USBR Daily CVP Water Supply Report



WY 2005 SACRAMENTO RIVER UNIMPAIRED RUNOFF (SACRAMENTO RIVER INDEX)

