

Summary of Water Supply Conditions as of 07/02/04

(Click on hyperlinks to view information graphically.)

Precipitation for the CVP is at 46.03 inches or 94% of the average water year-to-date total for this date and 92% of the historical average of 50 inches for the water year according to the 8-Station Index as of 01-Jul-2004. Only 0.01 inches for July so far, which has a monthly average of approximately 0.2 inches. June ended at 0.31 inches or 31% of the monthly average of 1.0 inches. Water Year 2003 totaled 59.77 inches. The Water Year 2004 total is even more likely to be similar to the Water Year 2002 total of 46.32 inches.

Reservoir Storage for Trinity is at 104% of its 15-year average and Shasta storage is 95% of its 15-year average. Folsom Reservoir is at 77% of its 15-year average, while New Melones is at 94% of its 15-year average.

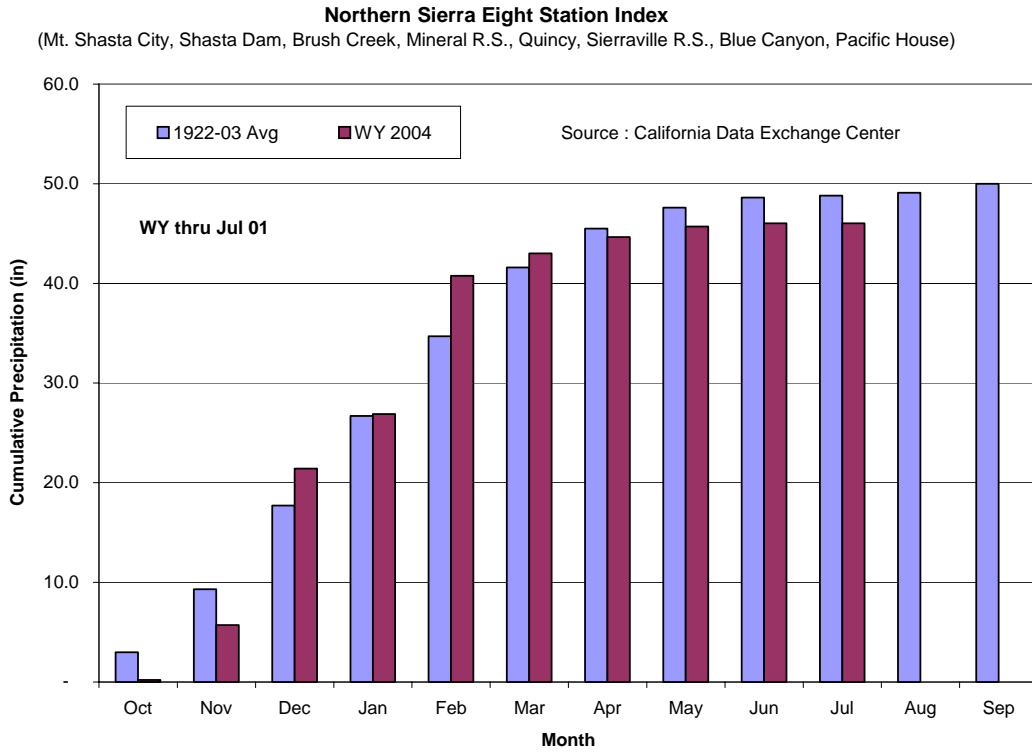
River Releases at Lewiston are ramping down and by July 22nd are scheduled to reach 450 cfs where they will remain through the end of this water year. Releases on the Sacramento and the American are being controlled by Delta demands. Stanislaus releases at Goodwin are ramping down from the Vernalis flow objective.

Water Supply indices were officially declared based on May 1st conditions. For the Sacramento, it is officially “Below Normal” and for the San Joaquin, “Dry.”

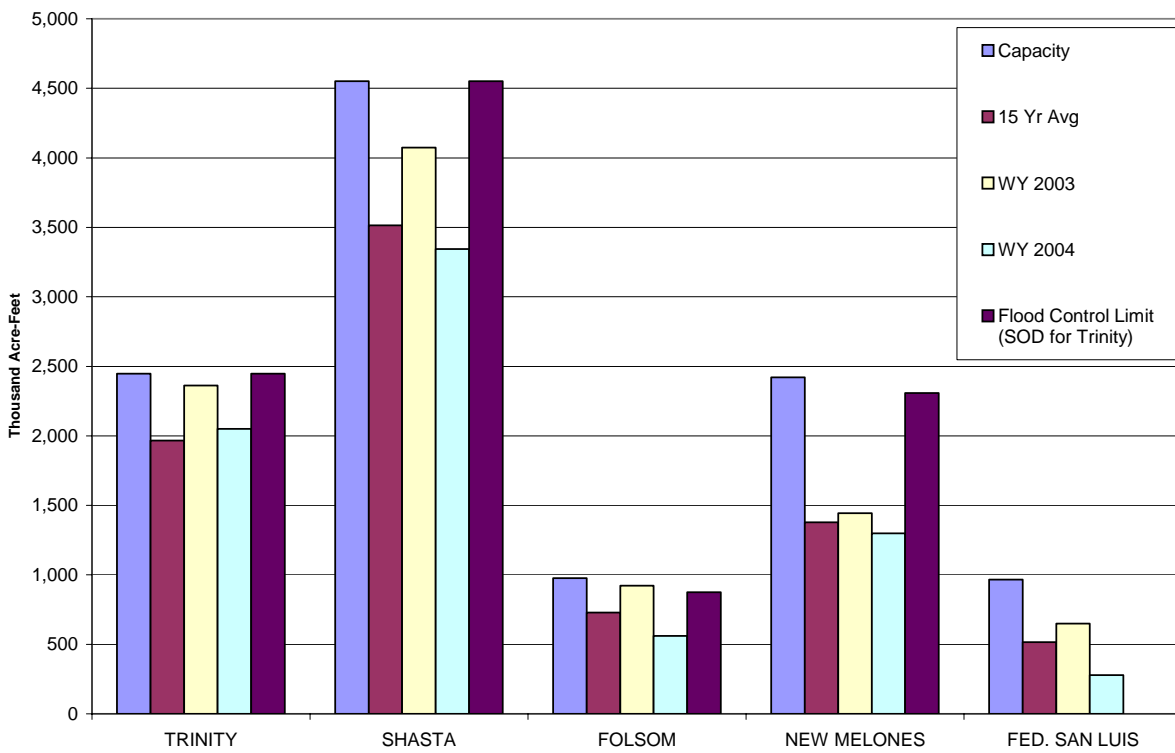
		(as of 07/02)	(as of 06/15)	Change
8 Station Index	(% of WY Avg to Date)	92%	89%	3%
Snow Pack - (Percent of April 1 Average)	North	0%	0%	0%
	Central	0%	0%	0%
		(as of 07/02)	(as of 06/15)	Change
Reservoir Storage - (Thousand AF)	Trinity	2,049	2,141	(92)
	Shasta	3,344	3,657	(313)
	Folsom	560	618	(58)
	New Melones	1,299	1,363	(64)
	Federal San Luis	278	411	(133)
		(as of 07/02)	(as of 06/15)	Change
River Releases - (Mean Daily cfs)	Trinity	2,000	2,398	(398)
	Sacramento	14,638	13,900	738
	American	2,994	2,265	729
	Stanislaus	652	601	51
		(as of 07/02)	(as of 06/15)	Change
Reservoir Inflow - (WY to Date in TAF)	Trinity	1,406	1,357	49
	Shasta	5,123	4,986	137
	Folsom	1,522	1,481	41
	New Melones	558	543	15
		(as of 07/02)	(as of 06/15)	Change
Precipitation (accumulated in.)	Trinity at Fish Hatchery	30.65	30.65	-
	Sacramento at Shasta Dam	66.23	65.53	0.70
	American at Blue Canyon	41.97	41.80	0.17
	Stanislaus at New Melones	19.34	19.34	-

Precipitation

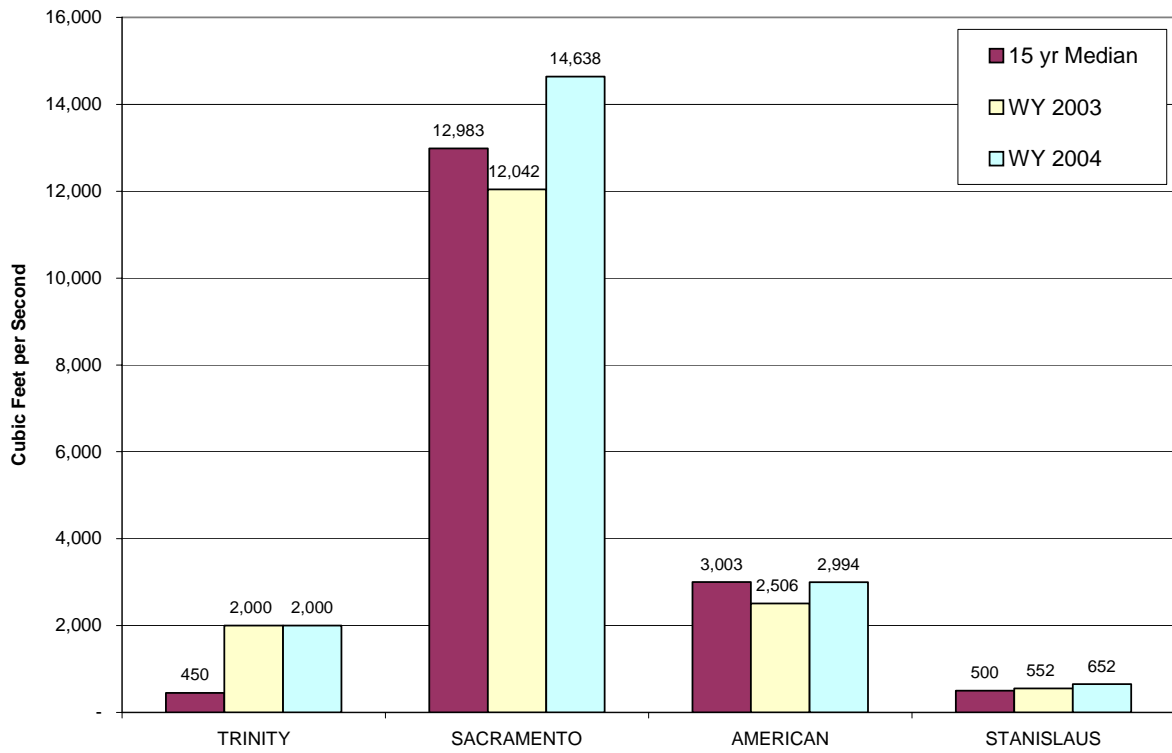
[Return to Summary](#)



Reservoir Storage as of JULY 1, 2004 Based on USBR Daily CVP Water Supply Report



Reservoir Releases as of JULY 1, 2004 Based on USBR Daily CVP Water Supply Report



WY 2004 SACRAMENTO RIVER UNIMPAIRED RUNOFF (SACRAMENTO RIVER INDEX)

