

Summary of Water Supply Conditions as of 06/15/04

(Click on hyperlinks to view information graphically.)

Precipitation for the CVP is at 45.85 inches or 94% of the average water year-to-date total for this date and 91% of the historical average of 50 inches for the water year according to the 8-Station Index as of 15-Jun-2004. Only 0.14 inches for June so far, which has a monthly average of approximately 1.0 inches. May ended at 1.05 inches or 50% of the monthly average of 2.10 inches. Water Year 2003 totaled 59.77 inches. The Water Year 2004 total is still more likely to be similar to the Water Year 2002 total of 46.32 inches.

Reservoir Storage for Trinity Reservoir is at 107% of its 15-year average while Shasta Reservoir storage is 99% of its 15-year average. Folsom Reservoir is at 81 of its 15-year average, but New Melones is at 99% of its 15-year average.

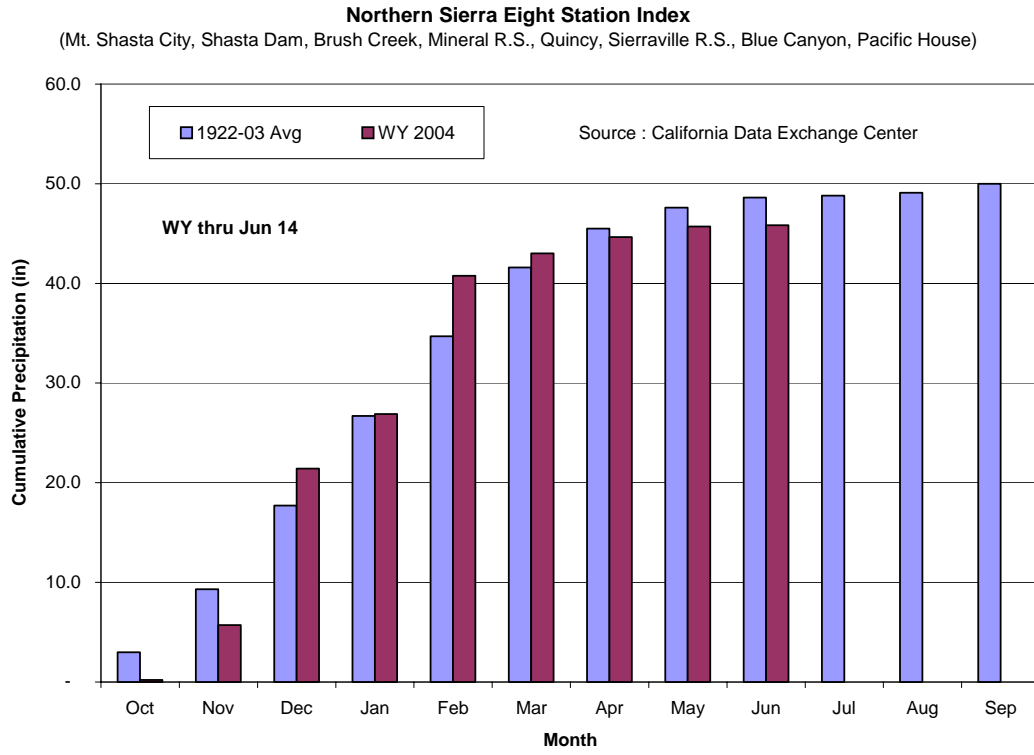
River Releases at Lewiston of the normal year instream flow pattern continue, although flows stopped exceeding Trinity Powerplant capacity as of June 2nd. Approximately, 48.6 TAF of water was “spilled” at the Powerplant. Releases on the Sacramento and the American are being controlled by Delta demands. Last week, a Delta levee break at Upper Jones Tract initially resulted in export cuts at both Federal and State pumping plants and increased releases for Delta water quality. On the Stanislaus, releases are currently being controlled by the Vernalis Flow Objective.

Water Supply indices were officially declared based on May 1st conditions. For the Sacramento, it is officially “Below Normal” and for the San Joaquin, “Dry.”

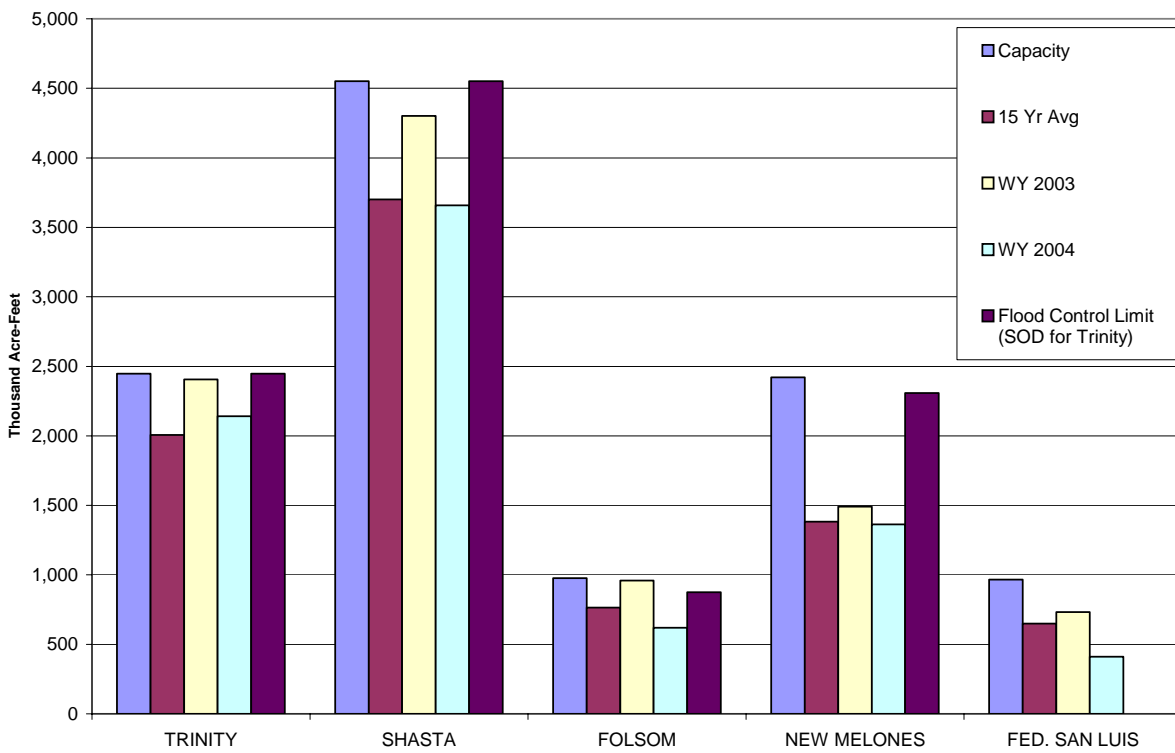
		(as of 06/15)	(as of 05/17)	Change
8 Station Index	(% of WY Avg to Date)	90%	89%	1%
Snow Pack -	North	0%	18%	-18%
	Central	0%	11%	-11%
		(as of 06/15)	(as of 05/17)	Change
Reservoir Storage - (Thousand AF)	Trinity	2,141	2,262	(121)
	Shasta	3,657	3,987	(330)
	Folsom	618	637	(19)
	New Melones	1,363	1,435	(72)
	Federal San Luis	411	672	(261)
		(as of 06/15)	(as of 05/17)	Change
River Releases - (Mean Daily cfs)	Trinity	2,398	6,000	(3,602)
	Sacramento	13,900	9,020	4,880
	American	2,265	2,020	245
	Stanislaus	601	1,501	(900)
		(as of 06/15)	(as of 05/17)	Change
Reservoir Inflow - (WY to Date in TAF)	Trinity	1,357	1,199	158
	Shasta	4,986	4,696	290
	Folsom	1,481	1,368	113
	New Melones	543	497	46
		(as of 06/15)	(as of 05/17)	Change
Precipitation (accumulated in.)	Trinity at Fish Hatchery	30.65	30.50	0.15
	Sacramento at Shasta Dam	65.53	64.99	0.54
	American at Blue Canyon	41.80	41.28	0.52
	Stanislaus at New Melones	19.34	19.11	0.23

Precipitation

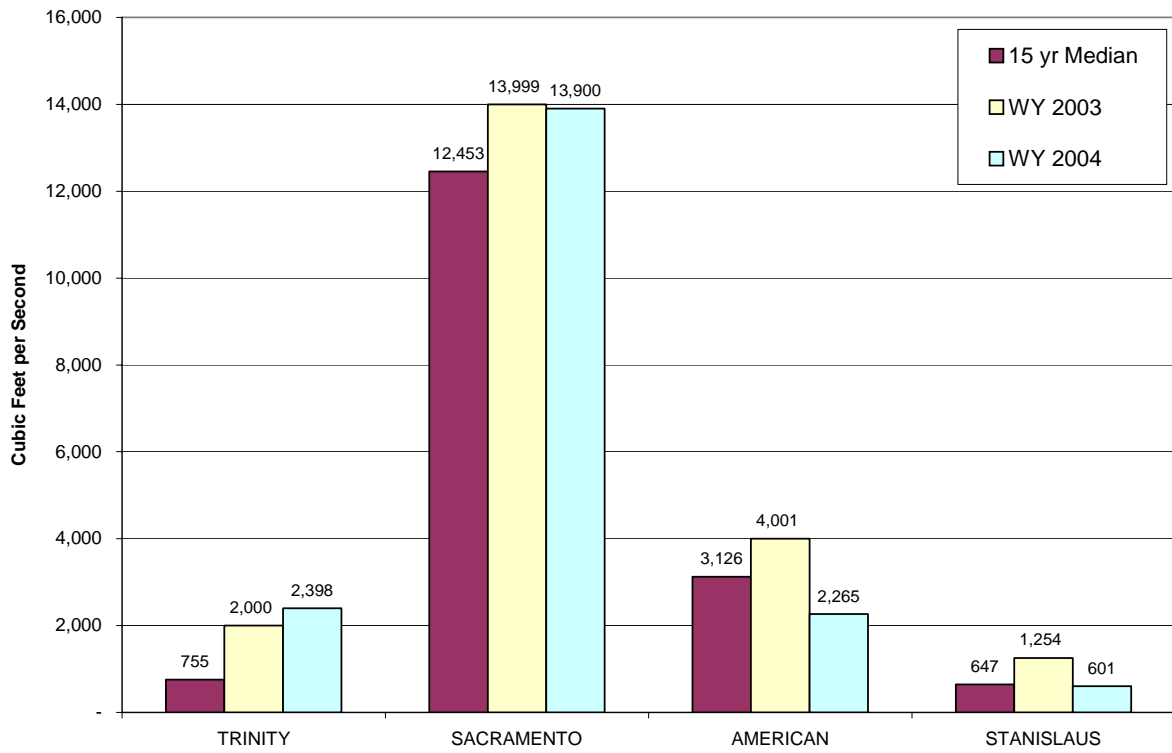
[Return to Summary](#)



Reservoir Storage as of JUNE 14, 2004 Based on USBR Daily CVP Water Supply Report



Reservoir Releases as of JUNE 14, 2004 Based on USBR Daily CVP Water Supply Report



WY 2004 SACRAMENTO RIVER UNIMPAIRED RUNOFF (SACRAMENTO RIVER INDEX)

