

Summary of Water Supply Conditions as of 05/17/04

(Click on hyperlinks to view information graphically.)

Precipitation for the CVP is at 45.22 inches or 94% of the average water year-to-date total for this date and 90% of the historical average of 50 inches for the water year according to the 8-Station Index as of May 17, 2004. May has been dry with relatively cool temperatures. The average May precipitation is 2.10 inches, but we have only received 0.54 inches. The May 2003 total was 2.17 inches. Water Year 2003 totaled 59.77 inches. The Water Year 2004 total is more likely to be similar to the Water Year 2002 total of 46.32 inches.

Reservoir Storage for Trinity Reservoir is at 115% of its 15-year average while Shasta Reservoir storage is 105% of its 15-year average. Folsom is at 89% of its 15-year average, but New Melones is at 105% of its 15-year average.

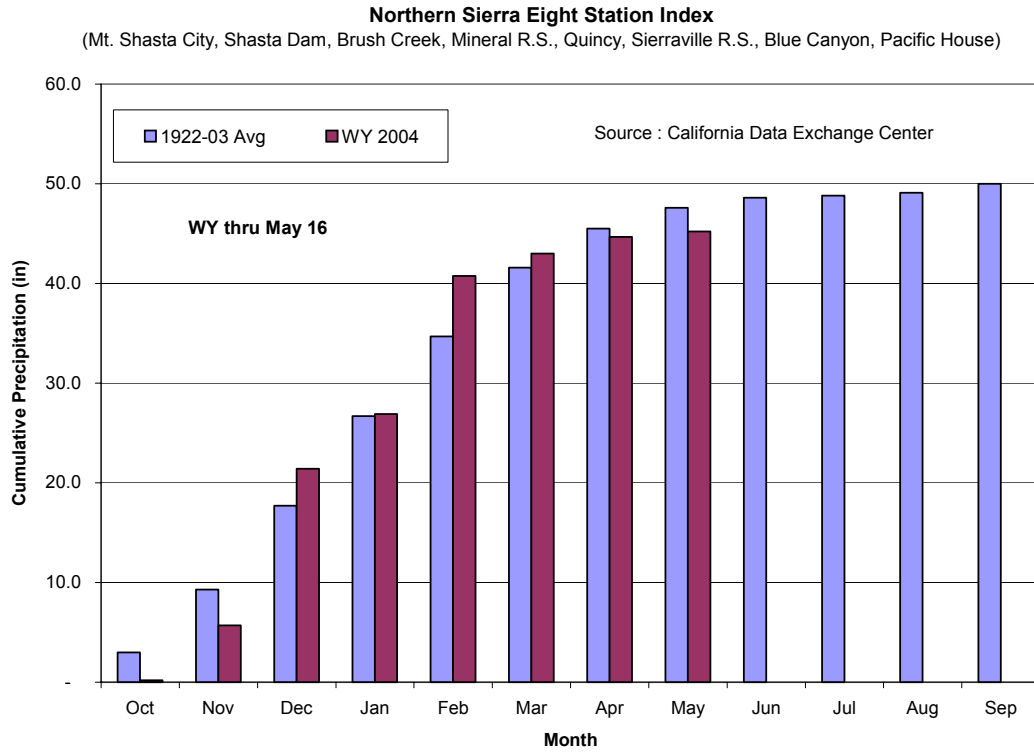
River Releases at Lewiston began exceeding powerplant capacity on the 15th and will continue to do so through June 1st, nearly three weeks. The peak release of 6,000 cfs began yesterday and will continue through May 25th. The entire flow schedule is posted on Reclamation's Central Valley Operations Office website. Releases on the Sacramento have increased since the end of April, while those on the American have decreased. Releases to the Stanislaus remain high for the Vernalis Adaptive Management Program.

Water Supply forecasts based on May 1st conditions reflect the dry April conditions. The 50% exceedence forecast for the Sacramento River Unimpaired Runoff is 16.5 MAF which would make WY 2004 "above normal." This is 86% of the 1951-2000 average of 19.1 MAF. The Sacramento Valley 40-30-30 index at 50% exceedence is 7.7 or "below normal," missing "above normal" by 0.2. This index gives greater weight to the April through July runoff estimate (40%) than the October through March runoff (30%), which is waited the same as the previous year's index, which was "above normal." The San Joaquin River Index is 60-20-20 and the official water year type is based upon the 75% exceedence forecast which came in as "dry" narrowly missed being classified as "critical" by 0.2 also.

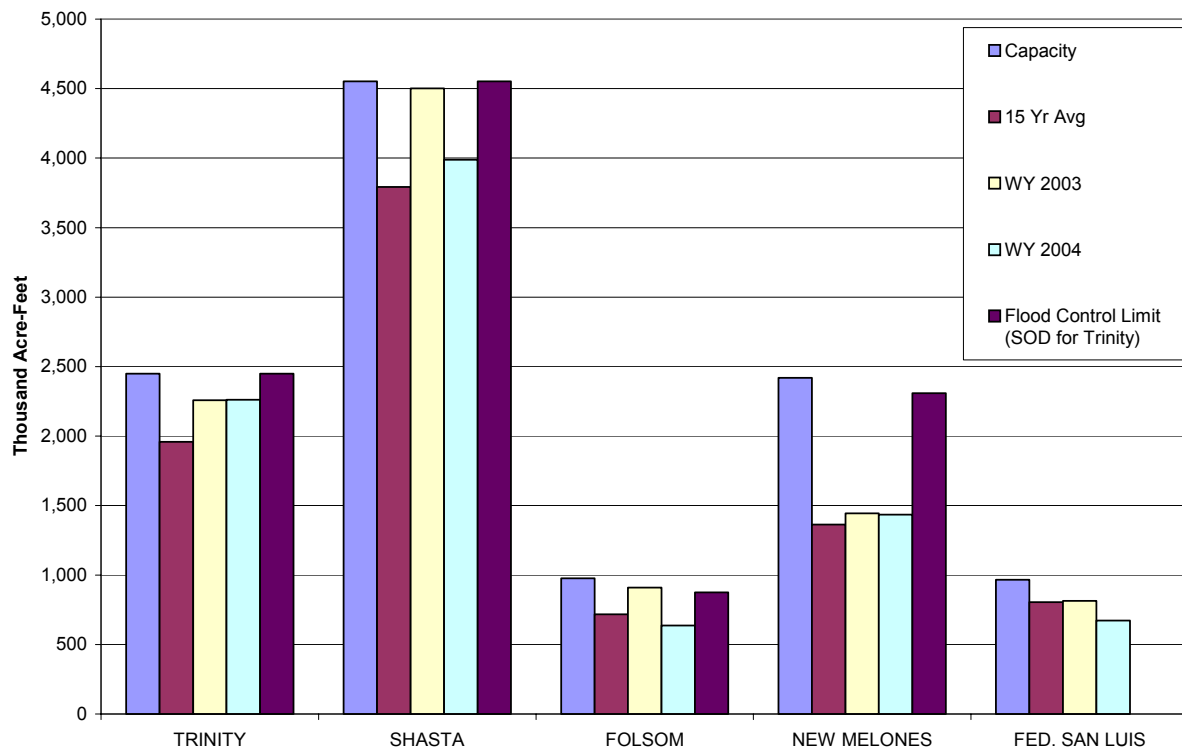
		(as of 05/17)	(as of 04/30)	Change
8 Station Index	(% of WY Avg to Date)	90%	89%	1%
Snow Pack -	North	18%	57%	-39%
	Central	11%	42%	-31%
		(as of 05/17)	(as of 04/30)	Change
Reservoir Storage - (Thousand AF)	Trinity	2,262	2,223	39
	Shasta	3,987	4,056	(69)
	Folsom	637	630	7
	New Melones	1,435	1,474	(39)
	Federal San Luis	672	837	(165)
		(as of 05/17)	(as of 04/30)	Change
River Releases - (Mean Daily cfs)	Trinity	6,000	300	5,700
	Sacramento	9,020	8,483	537
	American	2,020	2,534	(514)
	Stanislaus	1,501	1,251	250
		(as of 05/17)	(as of 04/30)	Change
Reservoir Inflow - (WY to Date in TAF)	Trinity	1,199	1,054	145
	Shasta	4,696	4,464	232
	Folsom	1,368	1,265	103
	New Melones	497	449	48
		(as of 05/17)	(as of 04/30)	Change
Precipitation (accumulated in.)	Trinity at Fish Hatchery	30.50	30.24	0.26
	Sacramento at Shasta Dam	64.99	64.76	0.23
	American at Blue Canyon	41.28	40.69	0.59
	Stanislaus at New Melones	19.11	19.11	-

Precipitation

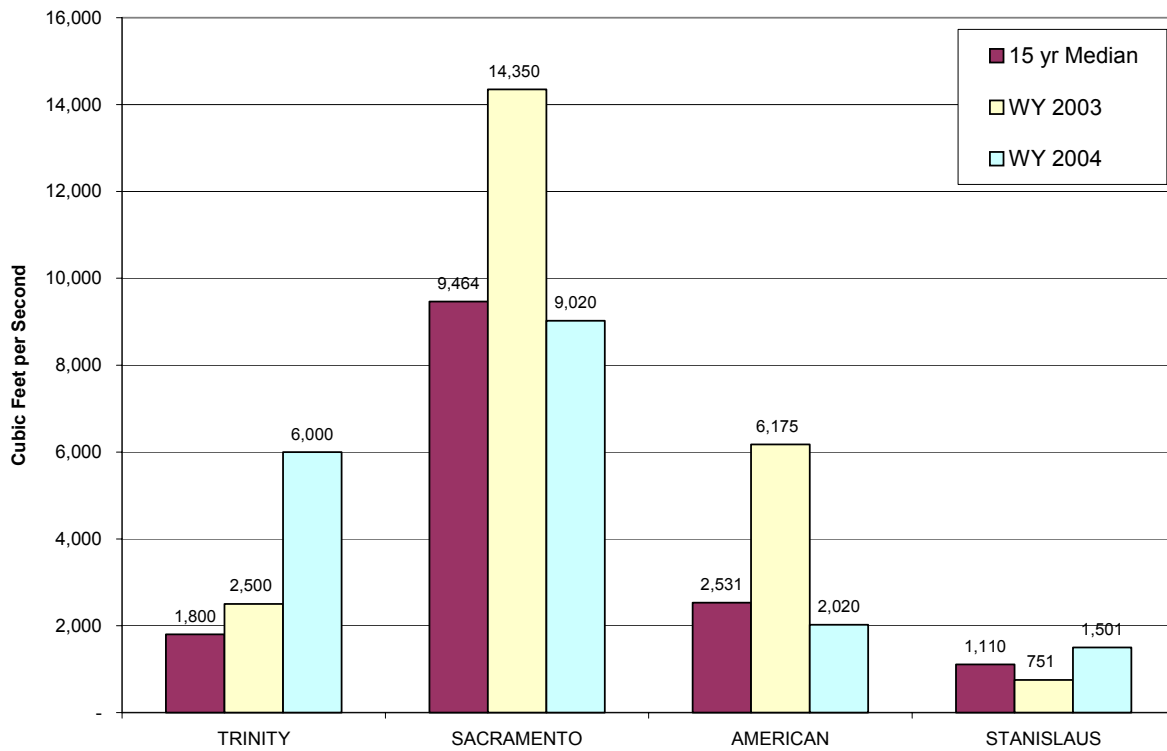
[Return to Summary](#)



Reservoir Storage as of MAY 16, 2004
Based on USBR DAMS Report Dated MAY 16, 2004



Reservoir Releases as of MAY 16, 2004
Based on USBR DAMS Report Dated MAY 16, 2004



WY 2004 SACRAMENTO RIVER UNIMPAIRED RUNOFF (SACRAMENTO RIVER INDEX)

