

Summary of Water Supply Conditions as of 04/30/04

Precipitation for the CVP is at 44.50 inches or 89% of the average water year-to-date total for April of 45.80 inches and 89% of the historical average of 50 inches for the water year according to the 8-Station Index as of April 30, 2004. April has been unseasonably warm, with record-breaking temperatures. The average April precipitation is 3.90 inches, but we have only received 1.49 inches. Of course, the April 2003 total was 10.52 inches. Water Year 2003 totaled 59.77 inches. The Water Year 2004 total is more likely to be similar to the Water Year 2002 total of 46.32 inches.

Reservoir Storage for Trinity Reservoir is at 116% of its 15-year average while Shasta Reservoir storage is 107% of its 15-year average. Folsom Reservoir is at 92% of its 15-year average, but New Melones is at 108% of its 15-year average. Trinity Reservoir storage will be impacted by increased releases down the river May through September which are projected to total over 530,000 acre-feet. Shasta storage will decrease as temperature control releases on the Sacramento River continue. On the other hand, Reclamation is considering cutting American River release to conserve Folsom Reservoir storage cold pool for later in the season.

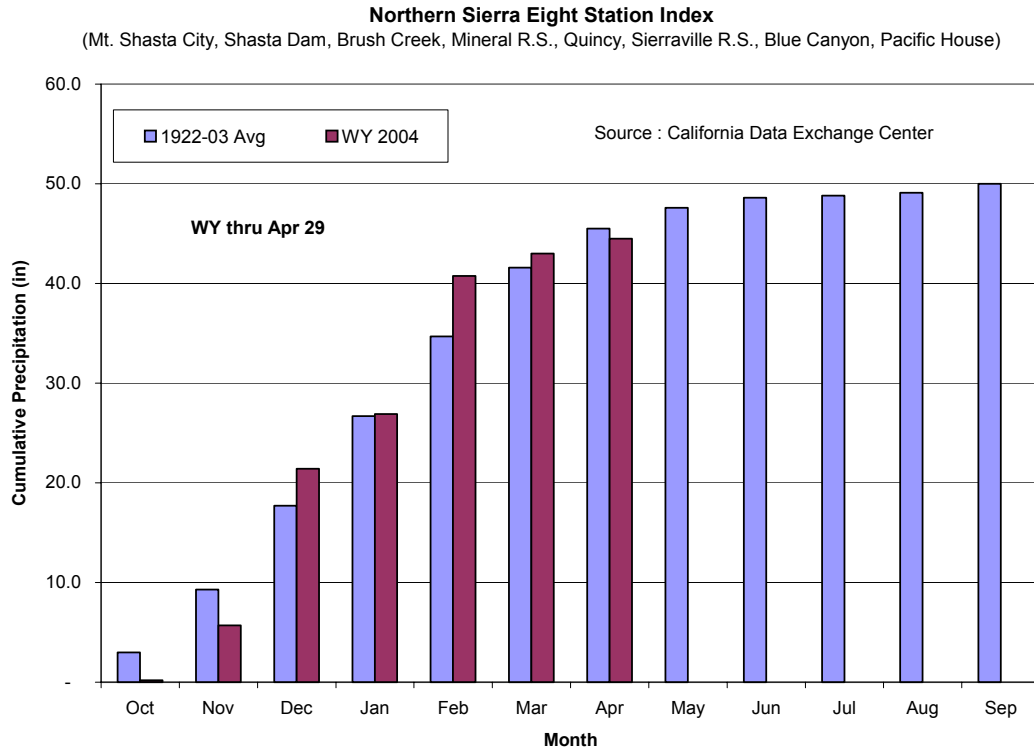
River Releases at Lewiston are going to increase soon. The Hoopa received a favorable decision from the Ninth Circuit Court of Appeals. Reclamation posted the flow schedule yesterday, April 29th. May releases are scheduled to exceed powerplant capacity at Trinity for nearly three weeks. The October 1 through May 4th volume is projected to total 133,589 acre-feet with the Water Year totaling 646,968 acre-feet. At the beginning of the month, releases on the Sacramento and American rivers were increasing to meet the Roe Island X2 Delta water quality standard. After ramping down to conserve storage, releases on the Sacramento increased this past week for temperature control. American River releases may decrease below the current rate, though impacts of this to steelhead are a concern of the fishery agencies. Releases to the Stanislaus have increased for the Vernalis Adaptive Management Program.

Water Supply forecasts based on April 1st conditions reflect the dry March conditions. The 50% exceedence forecast for the Sacramento River Unimpaired Runoff is now 17.4 MAF or 91% of the average of 19.1 TAF based upon 1951 through 2000. May 1st conditions will determine the year type indices for the remainder of the water year.

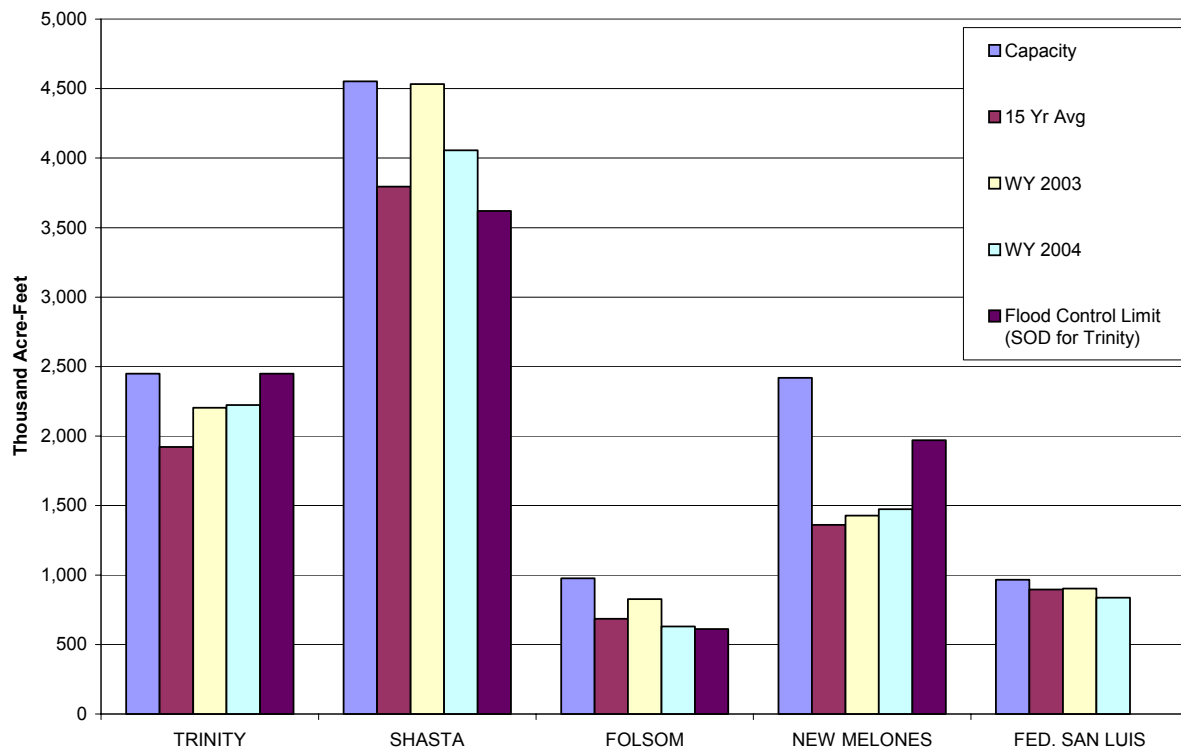
		(as of 04/30)	(as of 04/16)	Change
8 Station Index	(% of WY Avg to Date)	83%	72%	11%
Snow Pack -	North	57%	73%	-16%
	Central	42%	57%	-15%
		(as of 04/30)	(as of 04/16)	Change
Reservoir Storage - (Thousand AF)	Trinity	2,223	2,202	21
	Shasta	4,056	3,930	126
	Folsom	630	660	(30)
	New Melones	1,474	1,499	(25)
	Federal San Luis	837	937	(100)
		(as of 04/30)	(as of 04/16)	Change
River Releases - (Mean Daily cfs)	Trinity	300	300	-
	Sacramento	8,483	10,207	(1,724)
	American	2,534	5,475	(2,941)
	Stanislaus	1,251	555	696
		(as of 04/30)	(as of 04/16)	Change
Reservoir Inflow - (WY to Date in TAF)	Trinity	1,054	955	99
	Shasta	4,464	4,207	257
	Folsom	1,265	1,184	81
	New Melones	449	410	39
		(as of 04/30)	(as of 04/16)	Change
Precipitation (accumulated in.)	Trinity at Fish Hatchery	30.24	28.93	1.31
	Sacramento at Shasta Dam	64.76	61.94	2.82
	American at Blue Canyon	40.69	38.61	2.08
	Stanislaus at New Melones	19.11	19.03	0.08

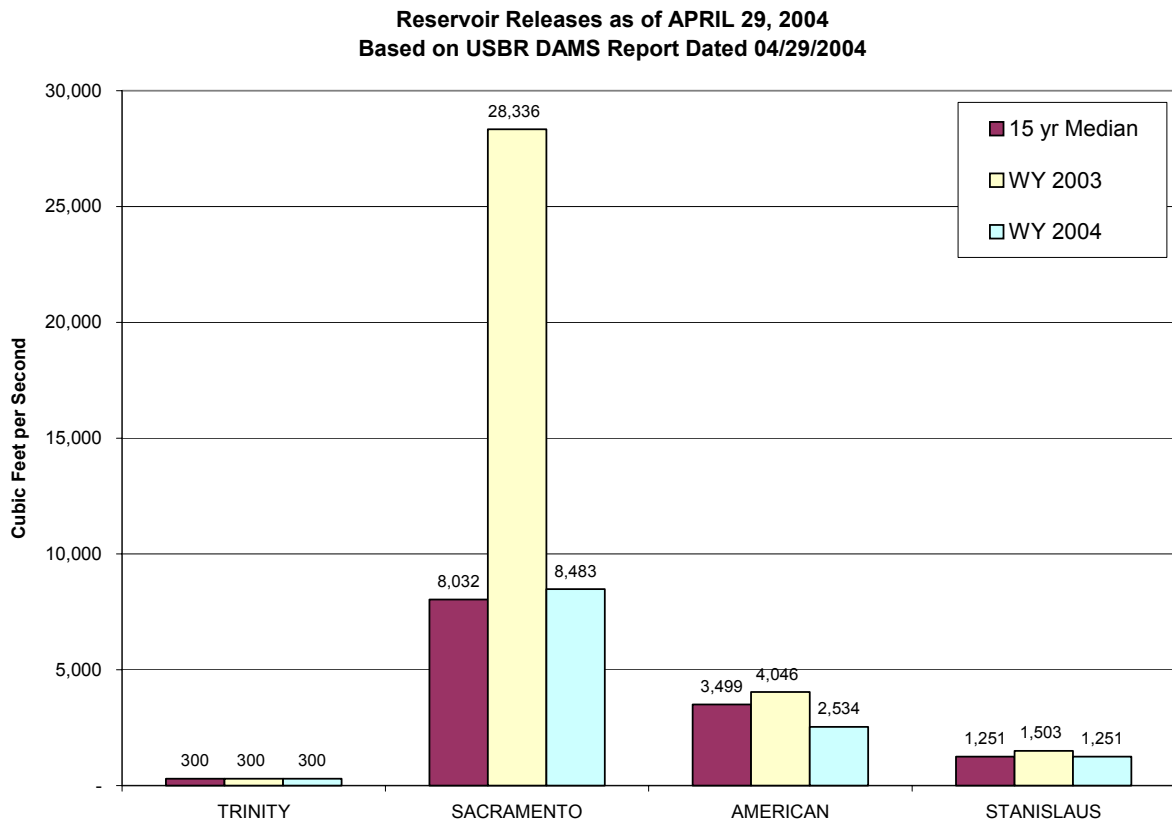
Precipitation

[Return to Summary](#)



Reservoir Storage as of APRIL 29, 2004
Based on USBR DAMS Report Dated 04/29/2004





WY 2004 SACRAMENTO RIVER UNIMPAIRED RUNOFF (SACRAMENTO RIVER INDEX)

