

Summary of Water Supply Conditions as of 03/11/04

(Hyperlinks are not functional at this time.)

Precipitation for the CVP is at 41.59 inches or 99% of the average water year-to-date total for March of 41.90 inches and 83% of the historical average of 50 inches for the water year according to the 8-Station Index as of March 11, 2004. March continues to be rather dry (only 0.83 inches so far) and the unseasonably warm weather has meant early melting of snow at lower elevations.

Reservoir Storage for Trinity Reservoir is 121% of its 15-year average and is currently 12 TAF under its maximum storage permitted for March per Safety of Dams criteria, while Shasta storage is 107% of its 15-year average and 34 TAF under the top of its flood control conservation pool. With Shasta stable, Reclamation has been able to cut back at Keswick steadily and increase diversions through Carr Powerplant. Folsom is 39 TAF encroached into the SAFCA flood control reservation while New Melones is 503 TAF below the top of its conservation pool.

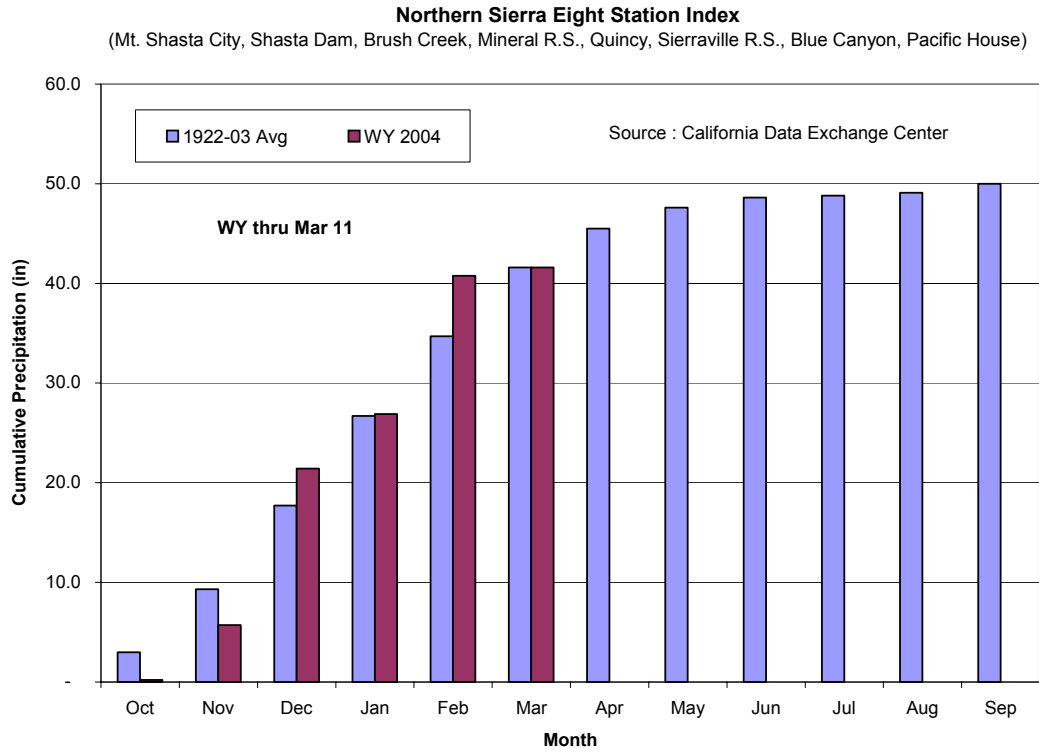
River Releases with the continued dry conditions, Reclamation can begin to store again at Shasta and can cut spills down the Trinity River at Lewiston which will be coming down from 2000 cfs to 300 cfs by Tuesday. Keswick releases have dropped down considerably and will continue the downward trend within fish constraints.

Water Supply forecasts based on March 1st conditions reflect the very wet February conditions. The 50% exceedence forecast for the Sacramento River Unimpaired Runoff is now 18.7 MAF or 98% of the average of 19.1 TAF based upon 1951 through 2000. This would also put us quite close to last year's total of 19.2 MAF.

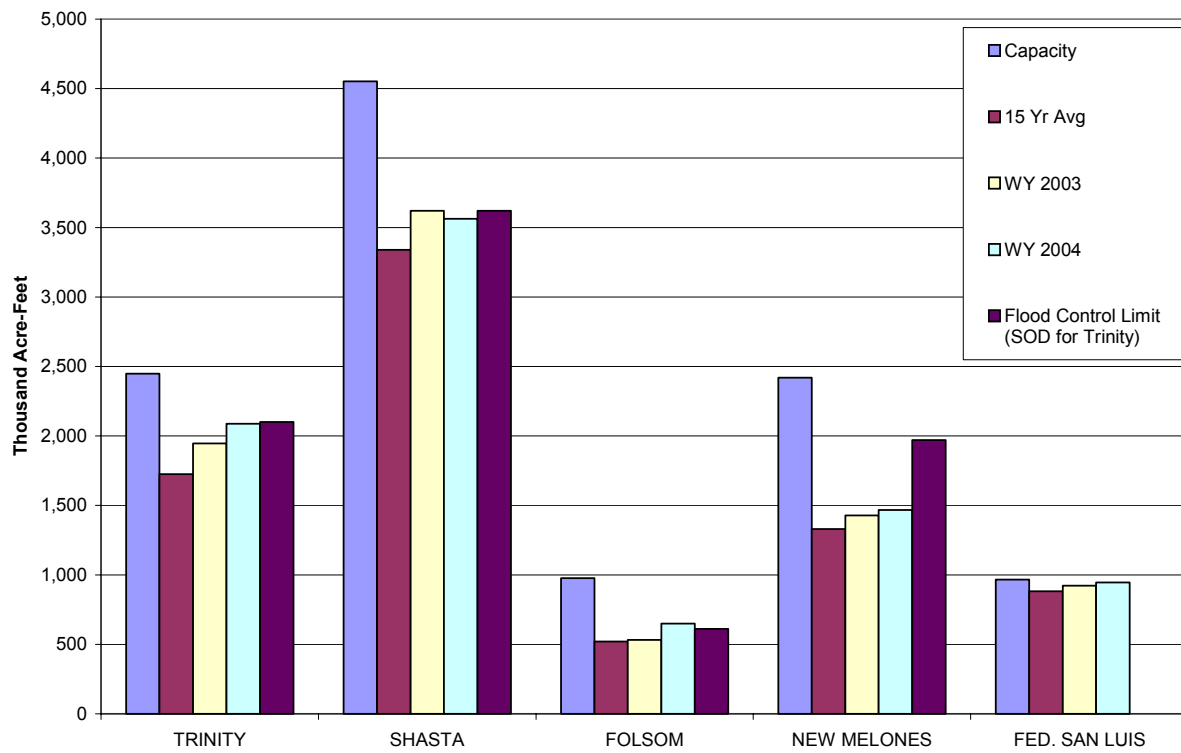
		(as of 03/11)	(as of 03/04)	Change
8 Station Index	(% of WY Avg to Date)	83%	72%	11%
Snow Pack - (Percent of April 1 Average)	North	125%	127%	-2%
	Central	96%	99%	-3%
		(as of 03/11)	(as of 03/04)	Change
Reservoir Storage - (Thousand AF)	Trinity	2,088	2,114	(26)
	Shasta	3,562	3,699	(137)
	Folsom	650	631	19
	New Melones	1,467	1,450	17
	Federal San Luis	945	908	37
		(as of 03/11)	(as of 03/04)	Change
River Releases - (Mean Daily cfs)	Trinity	2,000	2,000	-
	Sacramento	15,723	45,269	(29,546)
	American	3,031	3,030	1
	Stanislaus	201	205	(4)
		(as of 03/11)	(as of 03/04)	Change
Reservoir Inflow - (WY to Date in TAF)	Trinity	627	582	45
	Shasta	3,494	3,300	194
	Folsom	857	795	62
	New Melones	285	265	20
		(as of 03/11)	(as of 03/04)	Change
Precipitation (accumulated in.)	Trinity at Fish Hatchery	27.83	27.83	-
	Sacramento at Shasta Dam	59.40	59.40	-
	American at Blue Canyon	37.57	37.57	-
	Stanislaus at New Melones	18.15	18.15	-

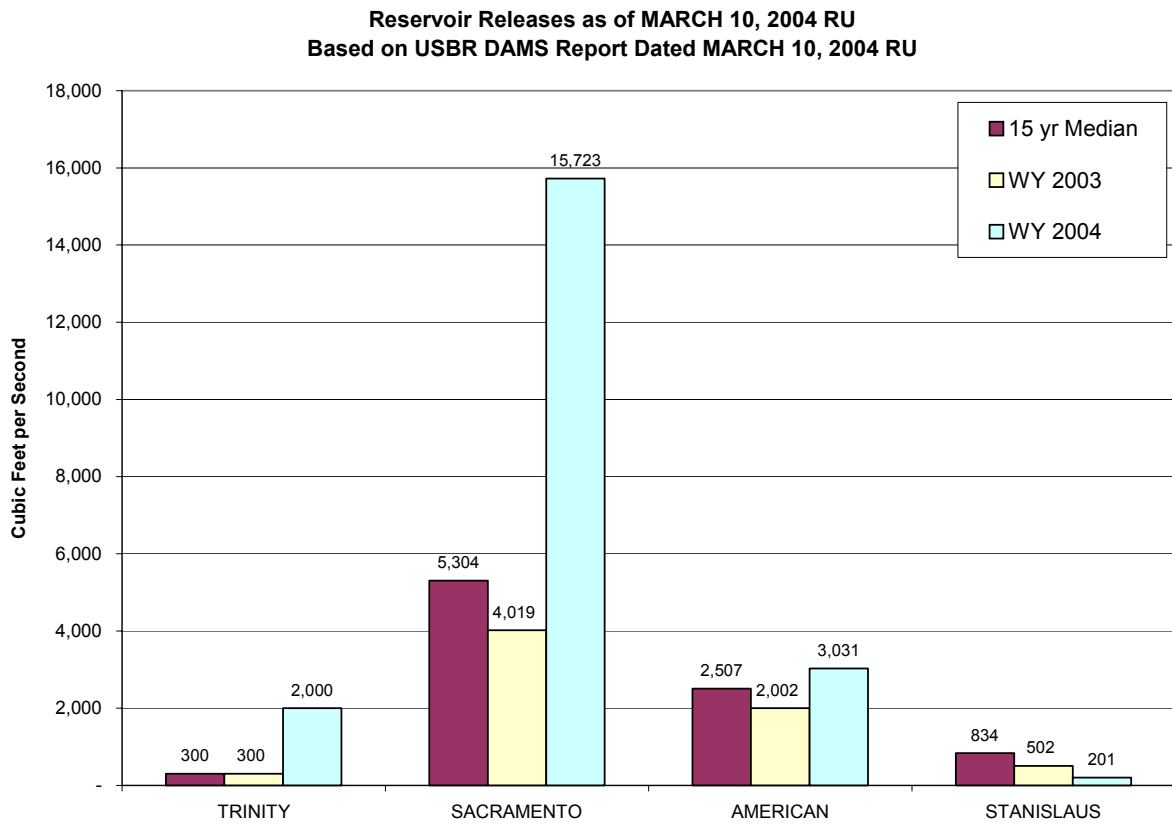
Precipitation

[Return to Summary](#)



Reservoir Storage as of MARCH 10, 2004 RU
Based on USBR DAMS Report Dated MARCH 10, 2004 RU





WY 2004 SACRAMENTO RIVER UNIMPAIRED RUNOFF (SACRAMENTO RIVER INDEX)

