

Summary of Water Supply Conditions as of 11/30/04

(Click on hyperlinks to view information graphically.)

Precipitation for the month of November in the CVP was at 9 inches or 95% of the average water year-to-date total and 18% of the historical average of 50 inches for the water year according to the 8-Station Index. November's monthly average is 6.38 inches. The lowest recorded November precipitation was 0.0 inches in 1930 while the highest was 21.55 inches in 1974.

Reservoir Storage for Trinity was at 98% of its 15-year average and Shasta storage was 84% of its 15-year average. Folsom Reservoir was at 83% of its 15-year average, while New Melones was at 95% of its 15-year average.

Safety of Dams Storage limits will go into effect at Trinity Reservoir in November. As of November 30th, Shasta permissible storage was 3,252 thousand-acre-feet, while Folsom was 577 thousand-acre-feet and New Melones was 1,970 thousand-acre-feet. As the graph shows, reservoirs were well below these levels.

River Releases at Lewiston releases were 100% of their 15-year median while Shasta releases were at 86% of their 15-year median. On the American, releases were 101% percent of their median and on the Stanislaus they were at 100% of their 15-year median.

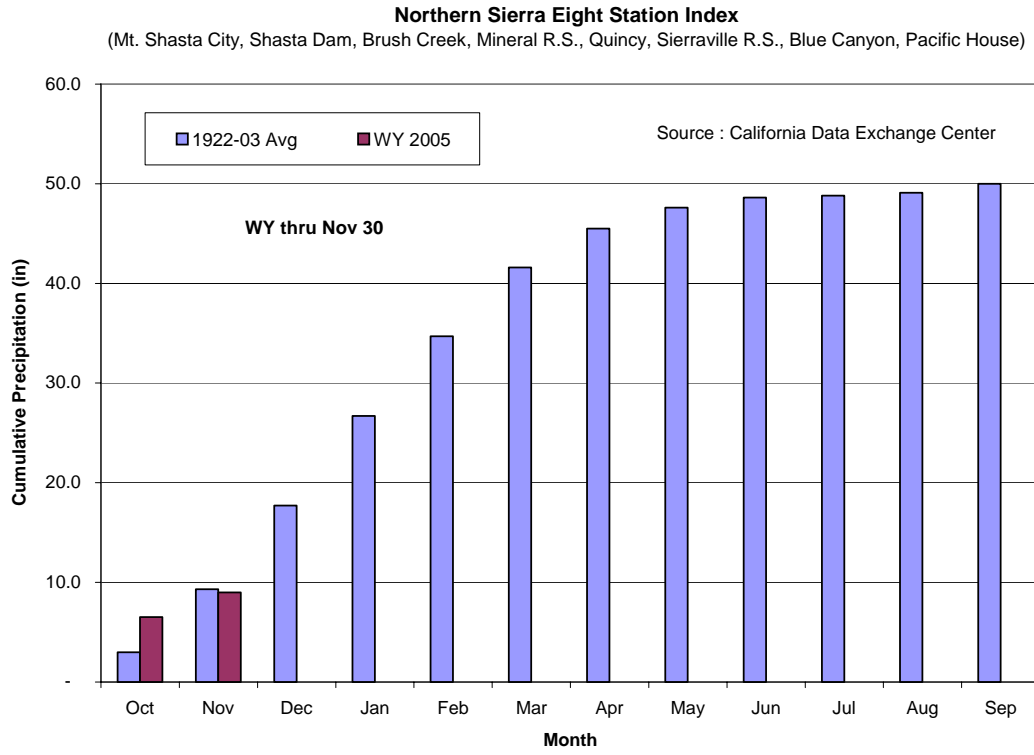
Water Supply indices were forecast beginning with October 1st conditions which had not been done in the past. For the Sacramento River Index based upon November 1st conditions, the 50% was at 17.7 while the 90% was at 10.1, which would be classified as Above Normal and Critical, respectively, per this index.

The NOAA Climate Prediction Center had announced the arrival of a weak El Niño that was expected to remain through the early months of 2005. It was too early to tell what impacts, if any, there would be to precipitation.

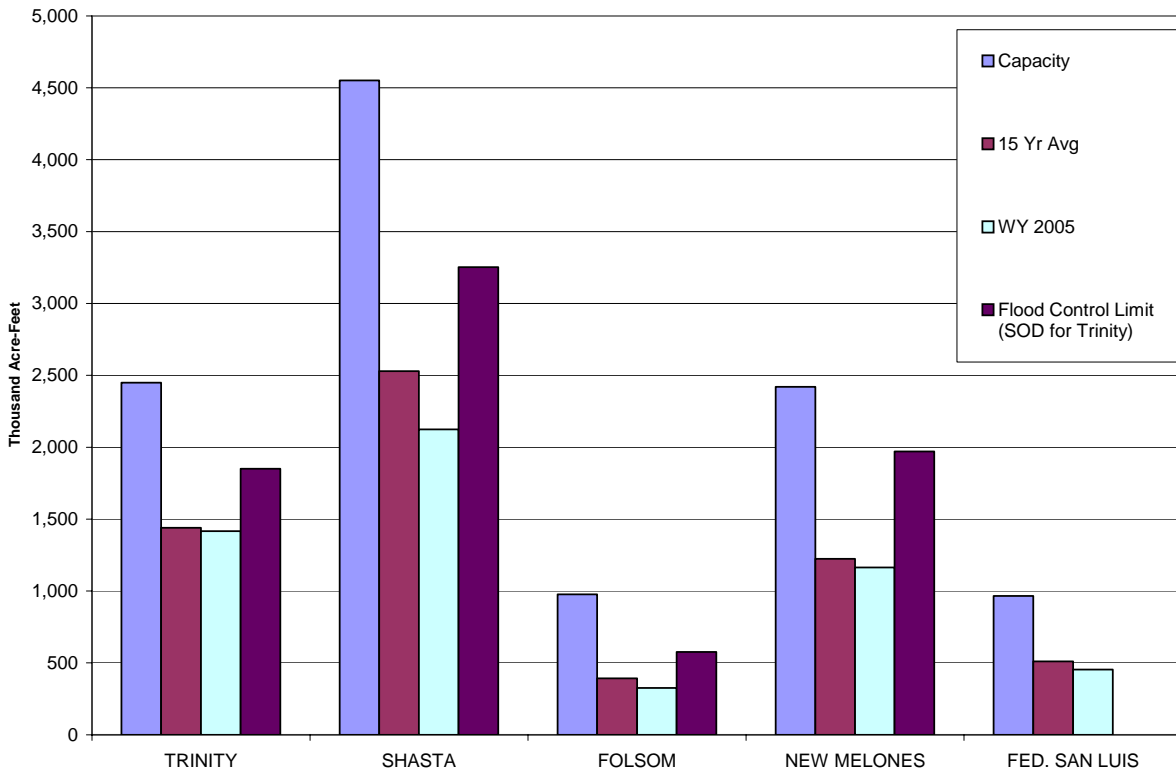
		11/30/04	10/31/04	Change
8 Station Index	(% of WY Avg to Date)	0%	0%	0%
Snow Pack -	North	0%	0%	0%
	Central	0%	0%	0%
		11/30/04	10/31/04	Change
Reservoir Storage - (Thousand AF)	Trinity	1,416	1,416	-
	Shasta	2,124	2,159	(35)
	Folsom	326	355	(29)
	New Melones	1,164	1,135	29
	Federal San Luis	454	266	188
		11/30/04	10/31/04	Change
River Releases - (Mean Daily cfs)	Trinity	300	375	(75)
	Sacramento	4,284	6,259	(1,975)
	American	1,766	1,604	162
	Stanislaus	278	284	(6)
		11/30/04	10/31/04	Change
Reservoir Inflow - (WY to Date in TAF)	Trinity	29	12	17
	Shasta	455	244	211
	Folsom	154	77	77
	New Melones	87	51	36
		11/30/04	10/31/04	Change
Precipitation (accumulated in.)	Trinity at Fish Hatchery	4.68	3.47	1.21
	Sacramento at Shasta Dam	9.92	8.09	1.83
	American at Blue Canyon	11.60	7.41	4.19
	Stanislaus at New Melones	6.68	3.95	2.73

Precipitation

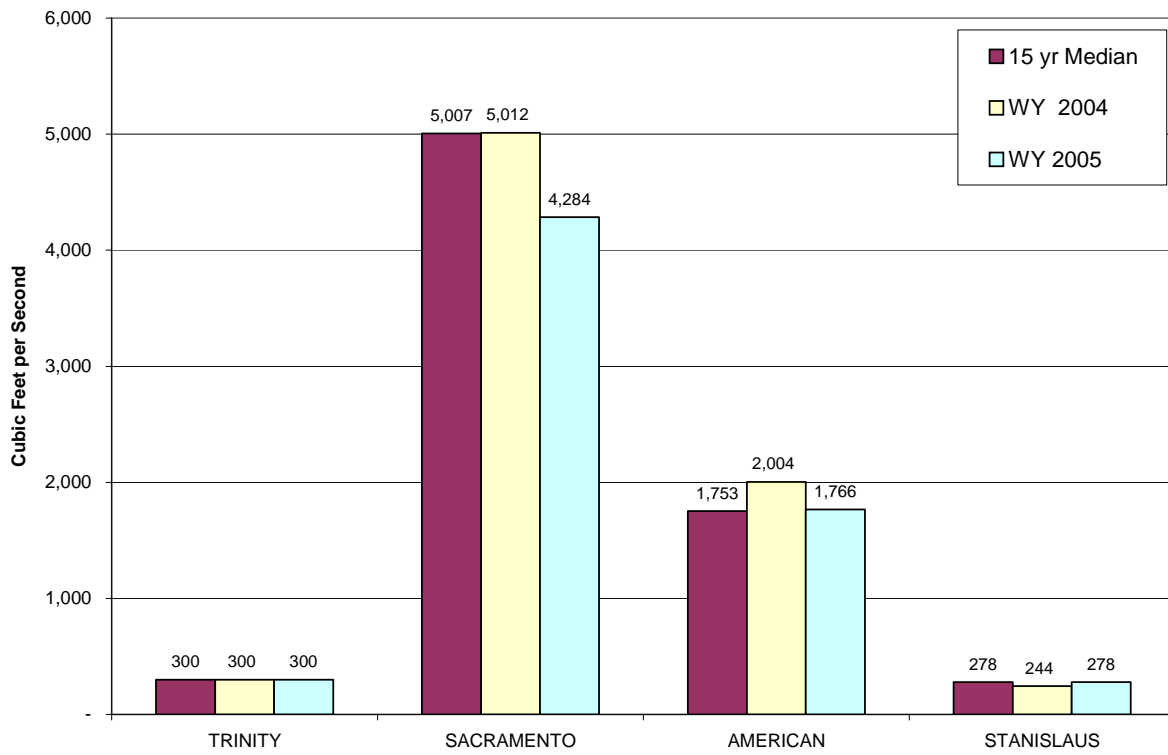
[Return to Summary](#)



Reservoir Storage as of NOVEMBER 30, 2004 based on USBR Daily CVP Water Supply Report



Reservoir Releases as of NOVEMBER 30, 2004 based on USBR Daily CVP Water Supply Report



WY 2005 SACRAMENTO RIVER UNIMPAIRED RUNOFF (SACRAMENTO RIVER INDEX)

