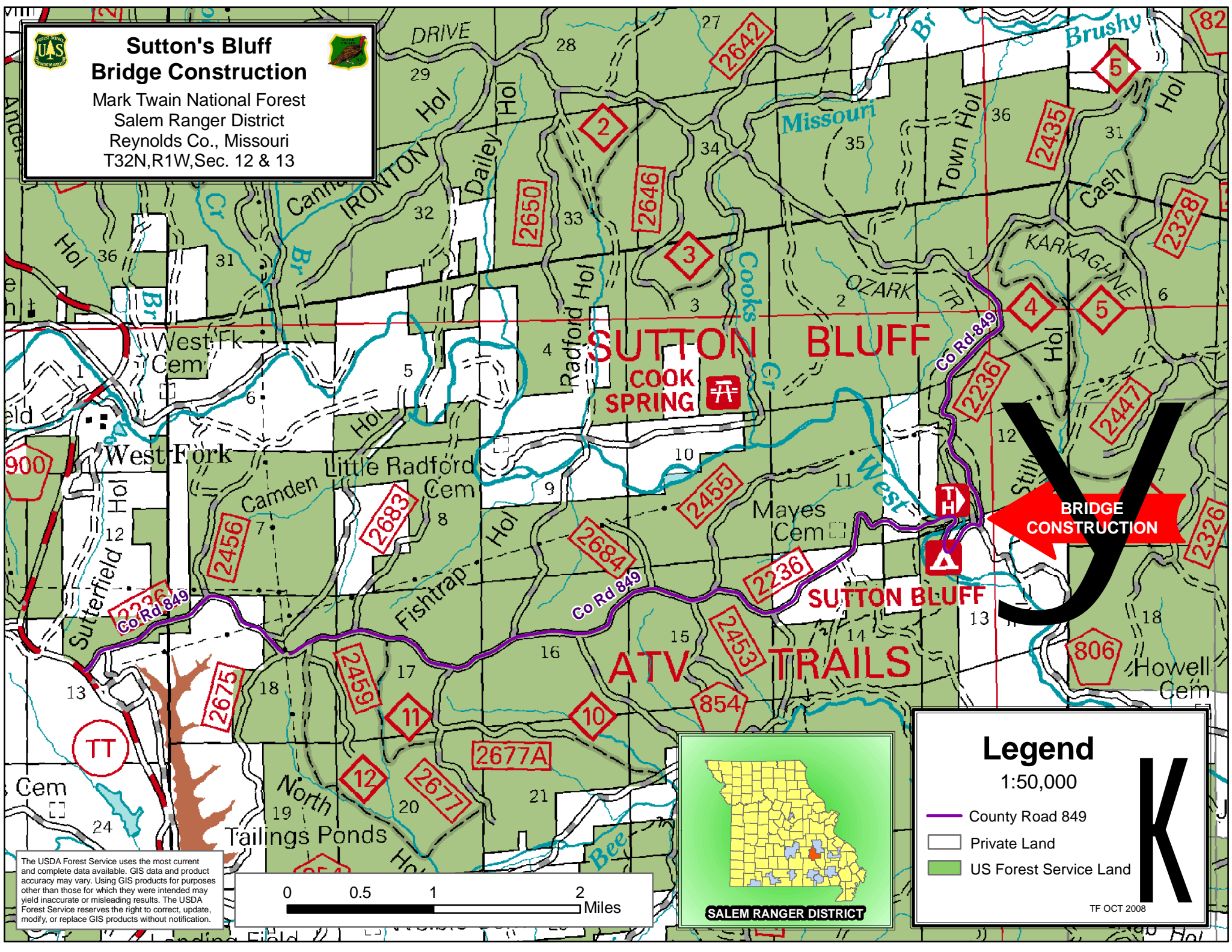




# Sutton's Bluff Bridge Construction

Mark Twain National Forest  
Salem Ranger District  
Reynolds Co., Missouri  
T32N,R1W,Sec. 12 & 13



## SUTTON BLUFF

### COOK SPRING

### SUTTON BLUFF

### ATV TRAILS

BRIDGE CONSTRUCTION

## Legend

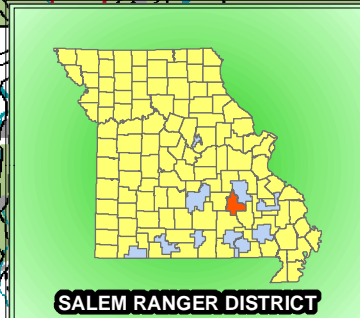
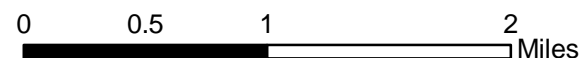
1:50,000

- County Road 849
- Private Land
- US Forest Service Land

# K

TF OCT 2008

The USDA Forest Service uses the most current and complete data available. GIS data and product accuracy may vary. Using GIS products for purposes other than those for which they were intended may yield inaccurate or misleading results. The USDA Forest Service reserves the right to correct, update, modify, or replace GIS products without notification.



SALEM RANGER DISTRICT