

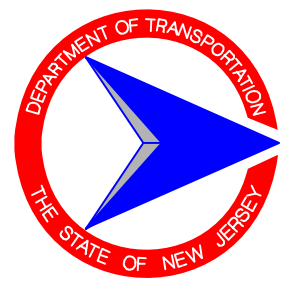


# New Jersey Department of Transportation Organization Chart

December 2008

**Mission Statement:** "Improving Lives by Improving Transportation."

View our latest organization chart online at:  
[www.njdot.nj.gov/about/](http://www.njdot.nj.gov/about/)



**Commissioner**  
Stephen Dilts

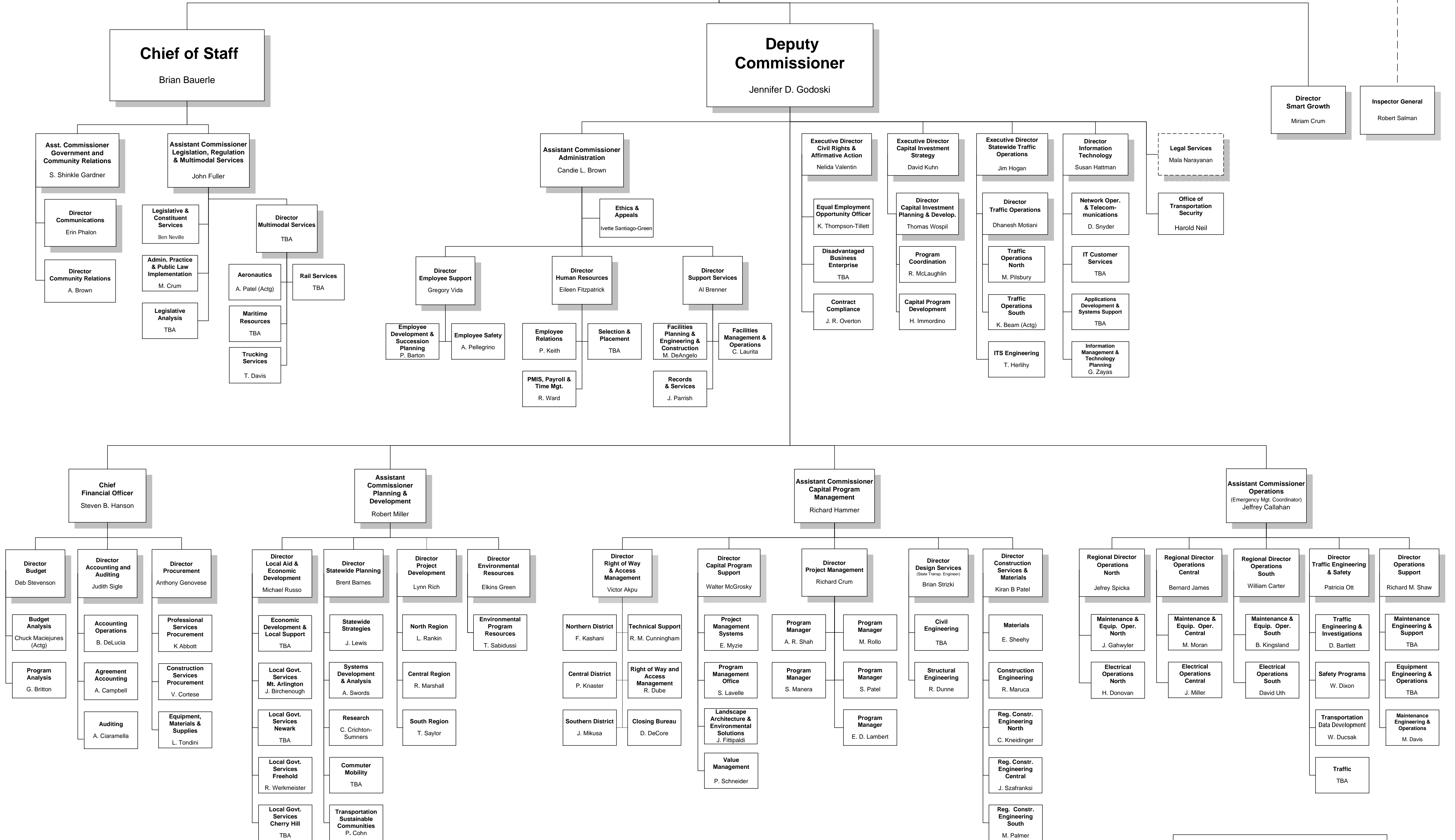
**Chairman of the Board  
NJ Transit**  
Stephen Dilts

**The Commissioner serves in an ex-officio capacity for the following agencies:**

- New Jersey Transit Corporation (Chair)
- New Jersey Transportation Trust Fund Authority (Chair)
- Delaware Valley Regional Planning Commission
- New Jersey Commerce, Economic Growth & Tourism Commission
- New Jersey Motor Vehicle Commission
- New Jersey Redevelopment Authority
- New Jersey Turnpike Authority (Chair)
- North Jersey Transportation Planning Authority
- South Jersey Transportation Authority (Chair)
- South Jersey Transportation Planning Organization

**The Commissioner is also**

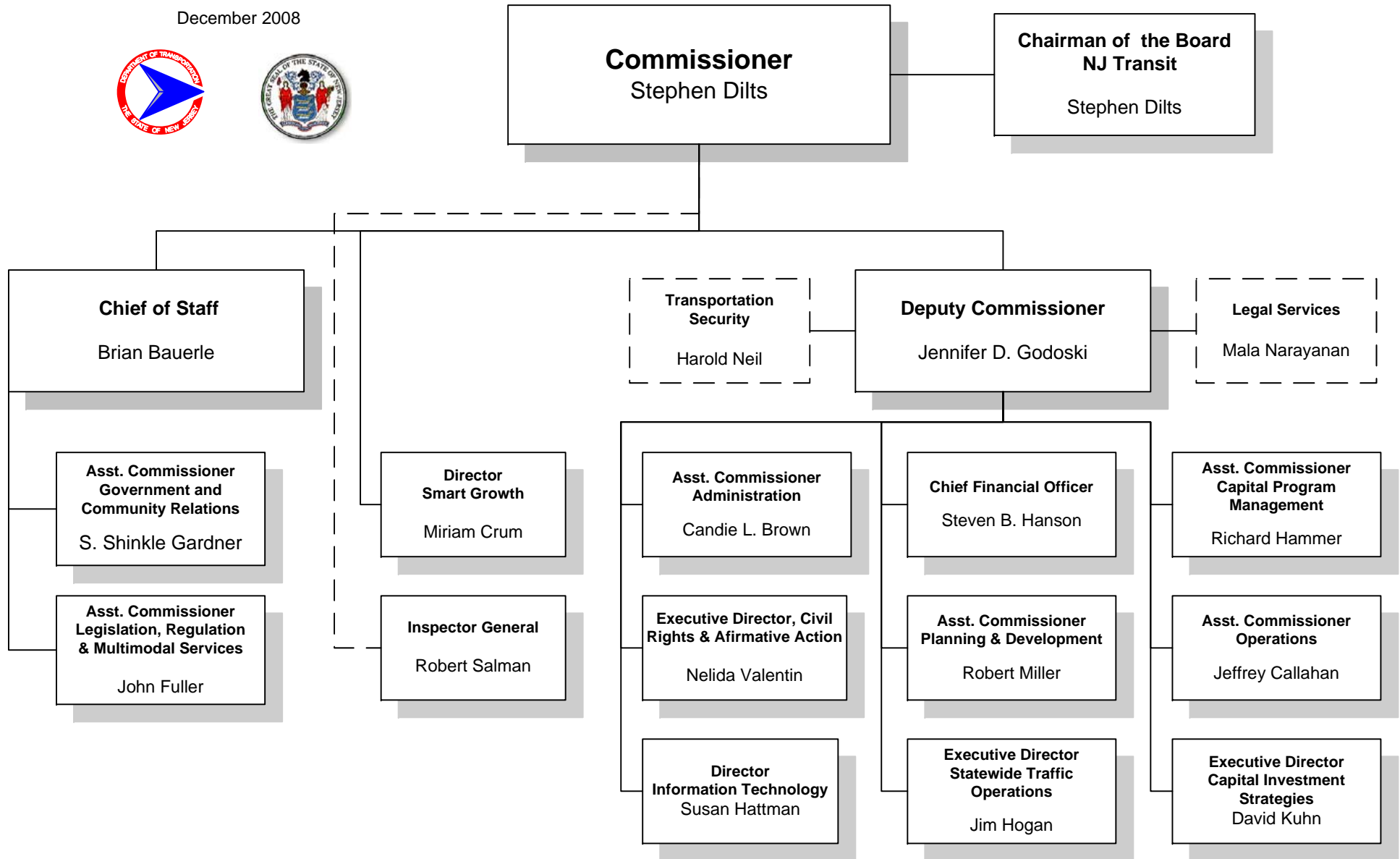
- Chairman of the Board, New Jersey Transit Corporation
- Chairman of the Board, New Jersey Transportation Trust Fund Authority
- Chairman of the Board, New Jersey Turnpike Authority
- Chairman of the Board, South Jersey Transportation Authority



Produced by The Division Information Technology  
New Jersey Department of Transportation  
1035 Parkway Avenue  
Trenton, NJ 08625-0600

# New Jersey Department of Transportation Executive Summary

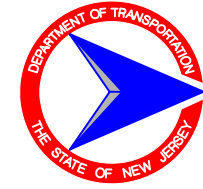
December 2008



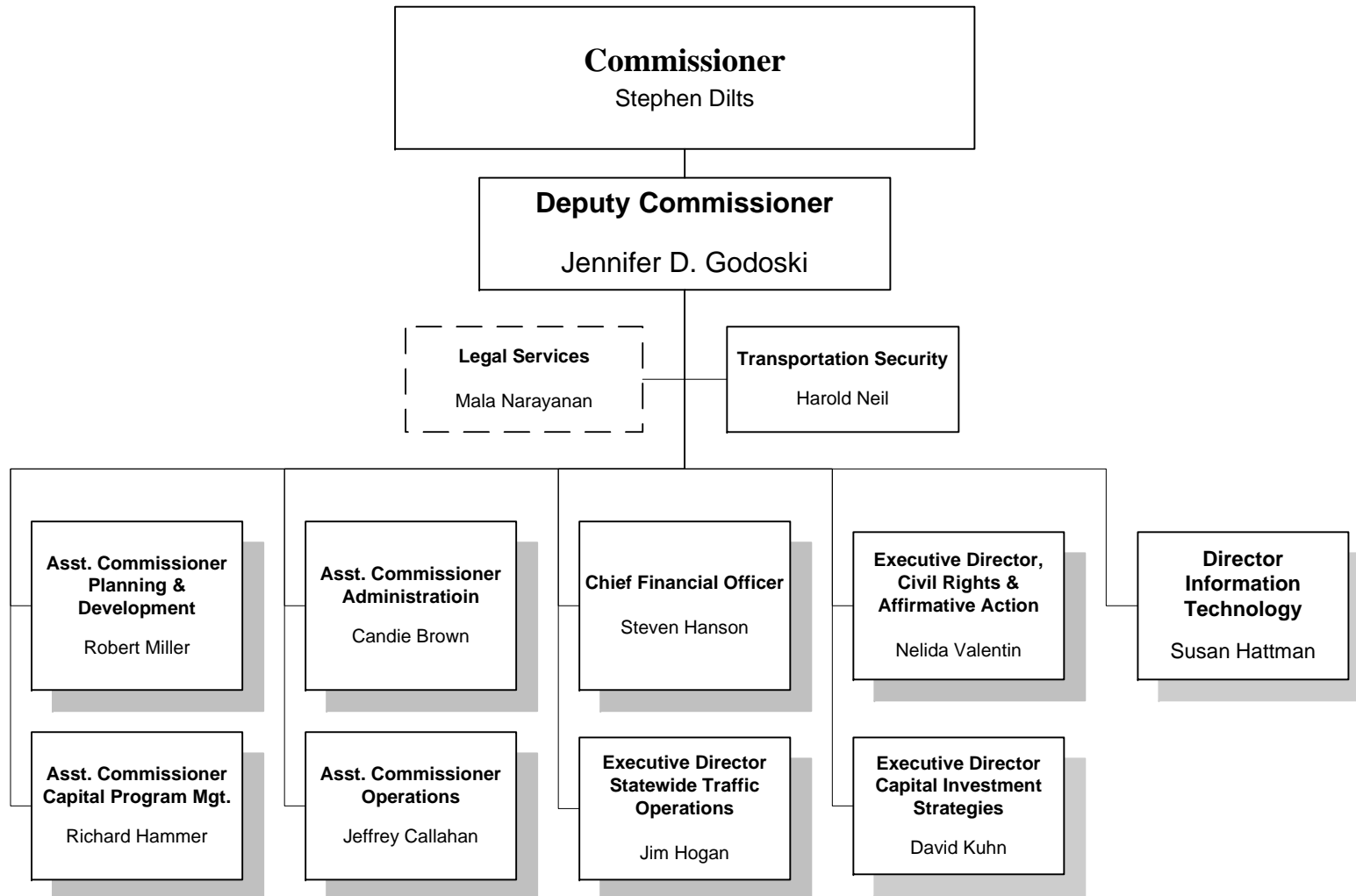


# New Jersey Department of Transportation Organization Chart

December 2008



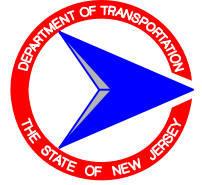
## Deputy Commissioner



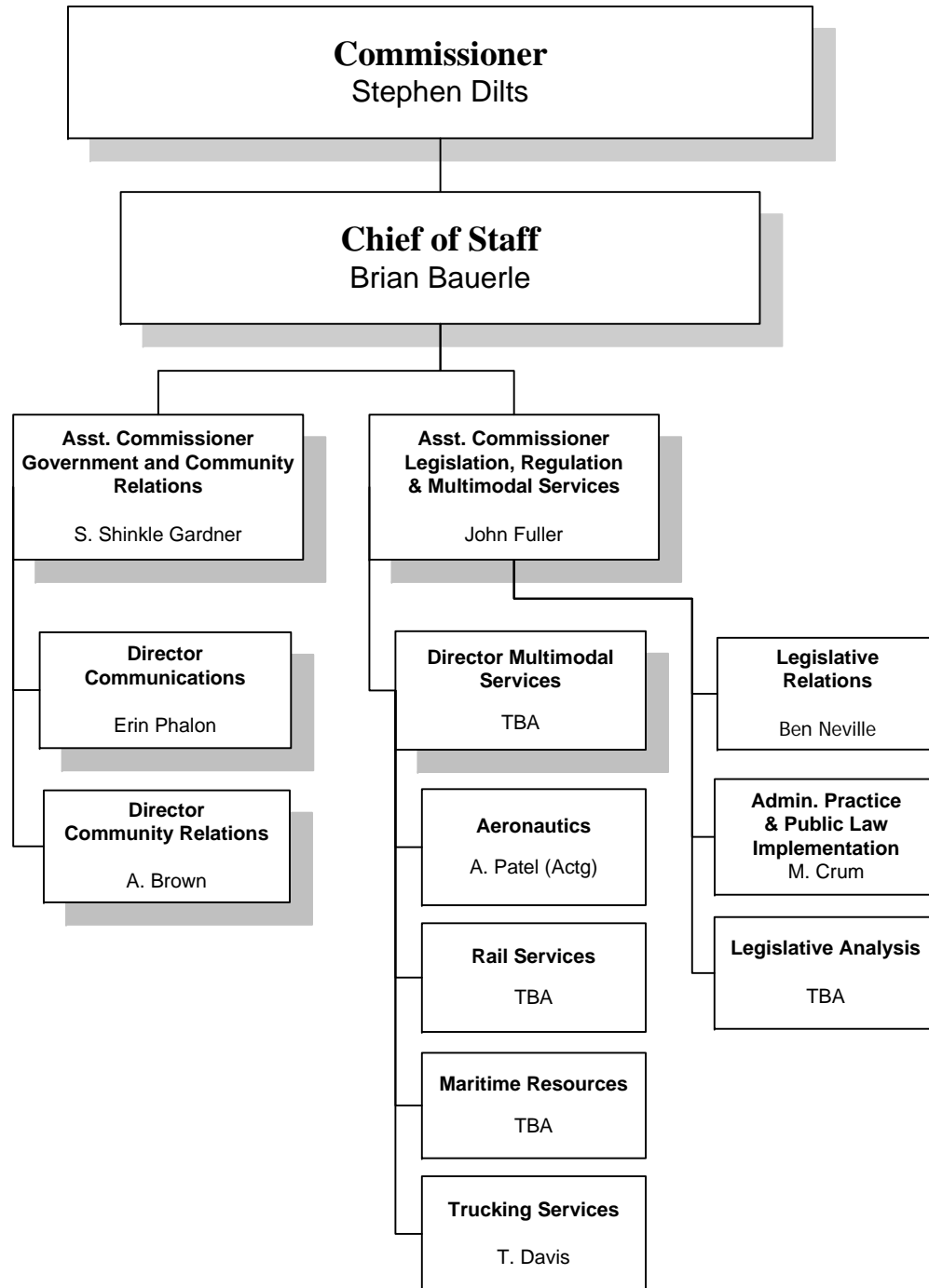


# New Jersey Department of Transportation Organization Chart

December, 2008

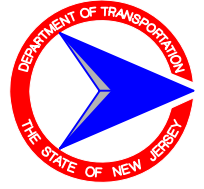


## Chief of Staff



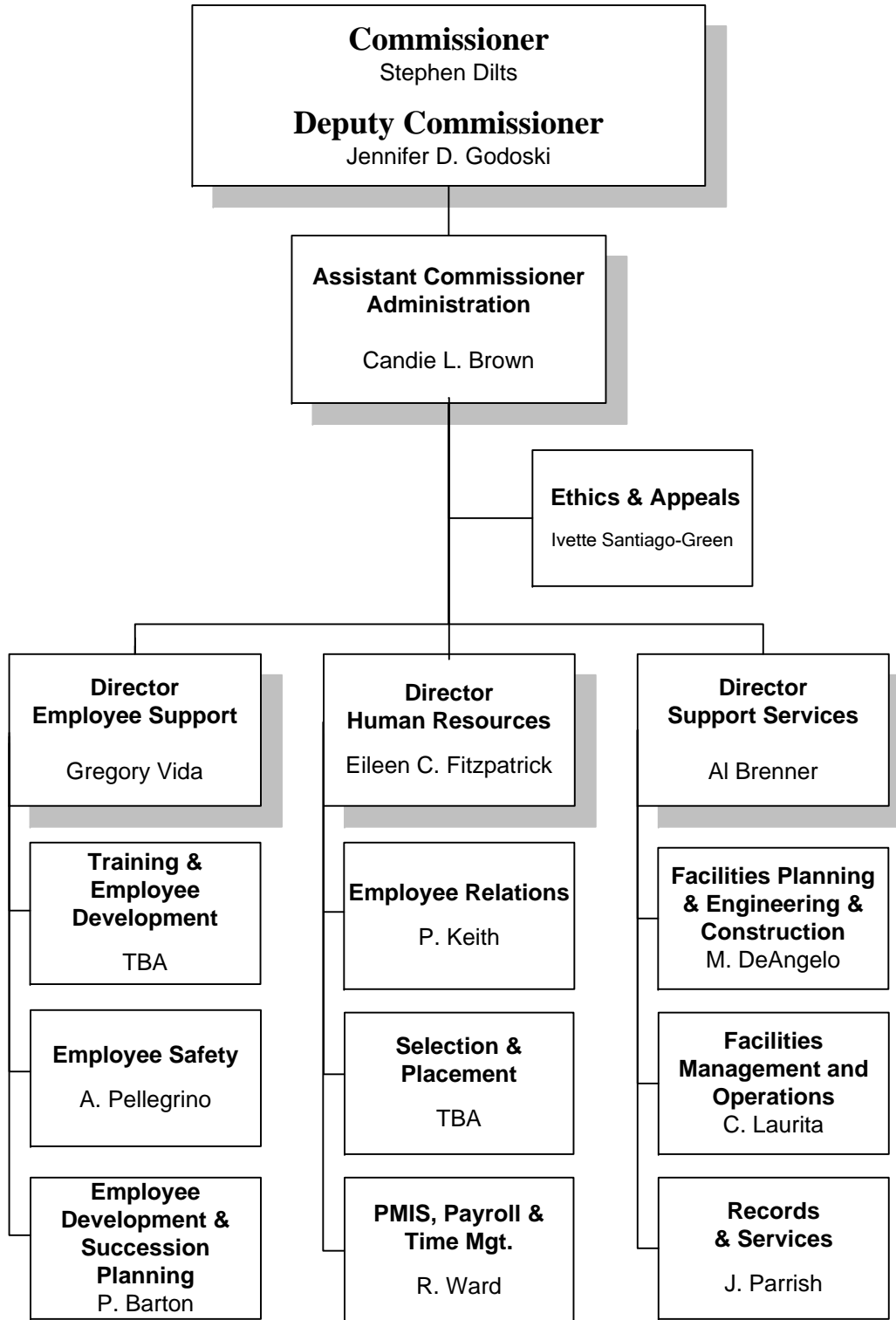


# New Jersey Department of Transportation Organization Chart



December 2008

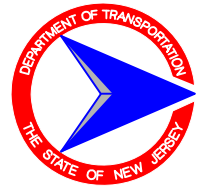
## Administration



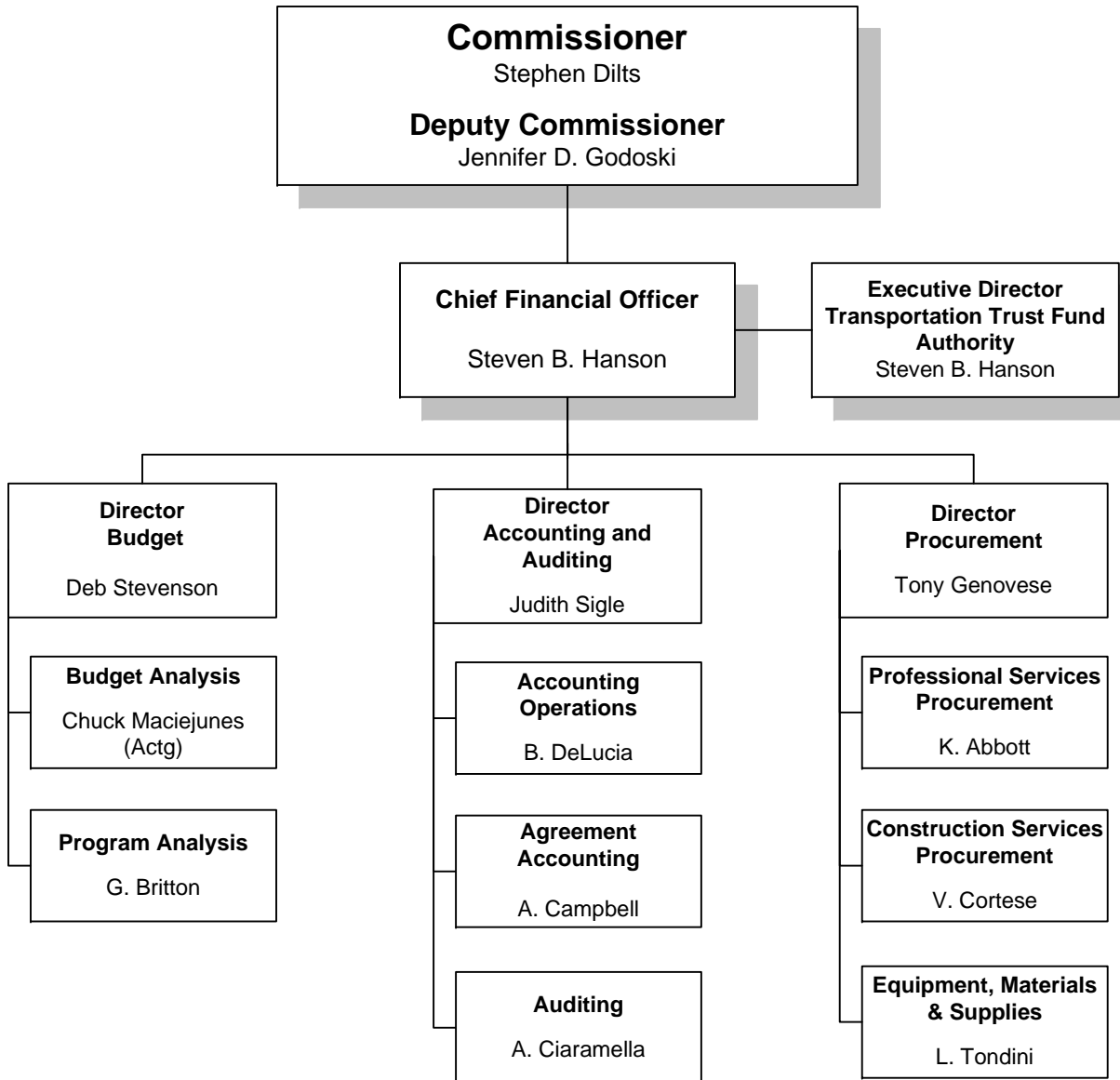


# New Jersey Department of Transportation Organization Chart

December 2008



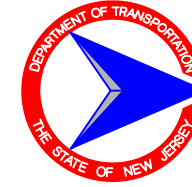
## Chief Financial Officer





# New Jersey Department of Transportation Organization Chart

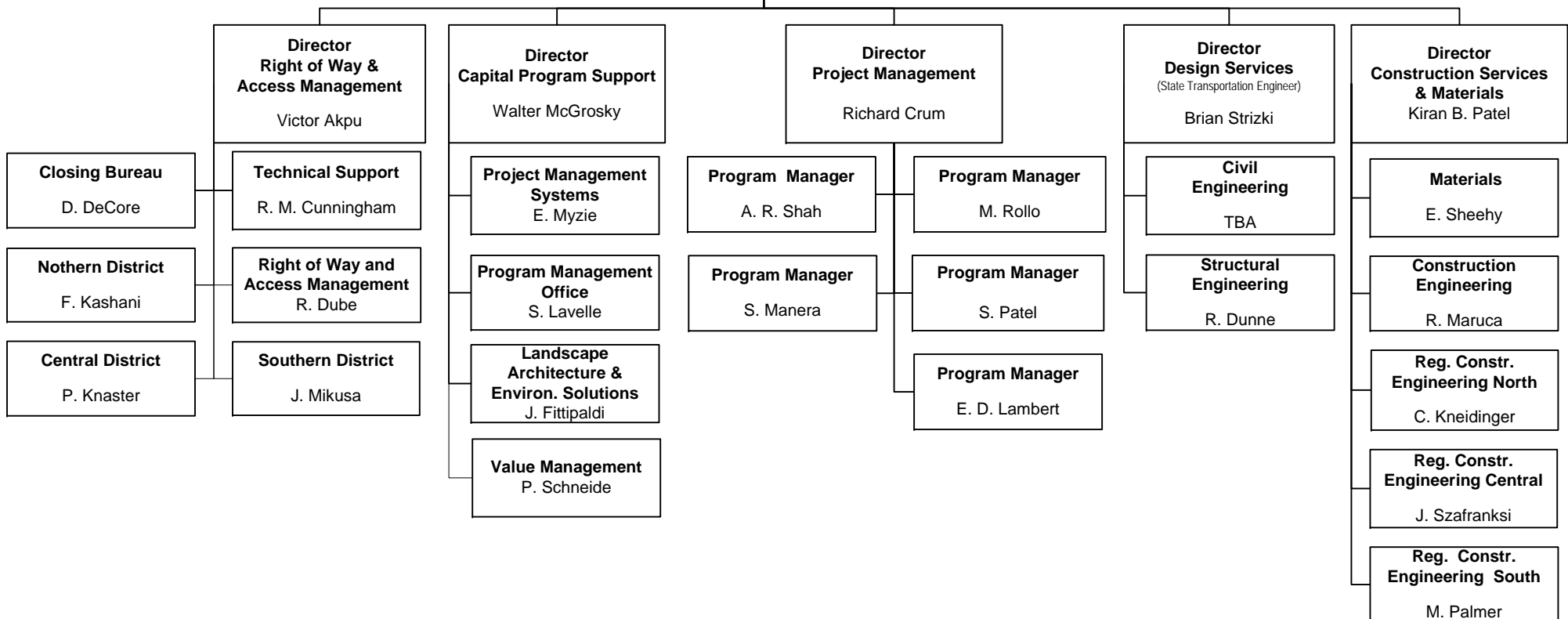
December 2008



## Capital Program Management

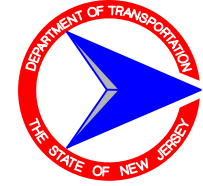
**Commissioner**  
Stephen Dilts  
**Deputy Commissioner**  
Jennifer D. Godoski

**Assistant Commissioner**  
**Capital Program Management**  
Richard Hammer



# New Jersey Department of Transportation Organization Chart

December 2008



## Operations

**Commissioner**

Stephen Dilts

**Deputy Commissioner**

Jennifer D. Godoski

**Assistant Commissioner  
Operations**

(Emergency Mgt. Coordinator)

Jeffrey Callahan

**Regional Director  
Operations  
North**

Jeffrey Spicka

**Maintenance &  
Equip. Operations  
North**

J. Gahwyler

**Electrical  
Operations  
North**

H. Donovan

**Regional Director  
Operations  
Central**

Bernard James

**Maintenance &  
Equip. Operations  
Central**

M. Moran

**Electrical Operations  
Central**

J. Miller

**Regional Director  
Operations  
South**

William Carter

**Maintenance & Equip.  
Operations South**

B. Kingsland

**Electrical Operations  
South**

David Uth

**Director  
Traffic Engineering  
& Safety**

Patricia Ott

**Traffic Engineering  
& Investigations**

D. Bartlett

**Safety Programs**

W. Dixon

**Transportation Data  
Development**

W. Ducsak

**Traffic**

TBA

**Director  
Operations  
Support**

Richard M. Shaw

**Maintenance  
Engineering &  
Support**

TBA

**Equipment  
Engineering &  
Operations**

TBA

**Maintenance  
Engineering &  
Operations**

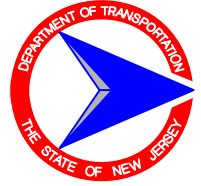
M. Davis



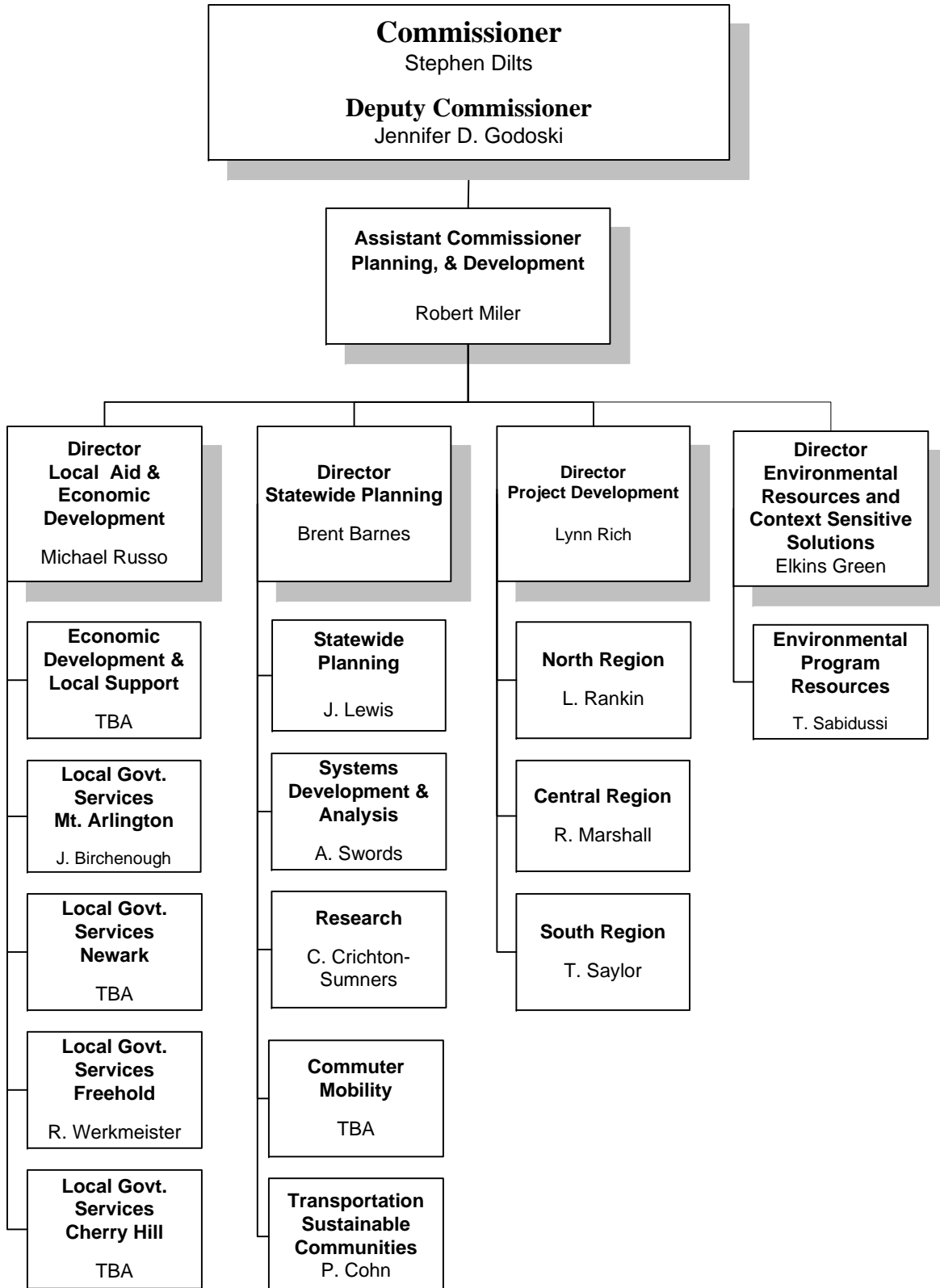


# New Jersey Department of Transportation Organization Chart

December 2008



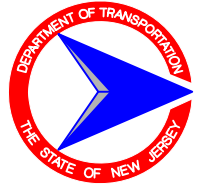
## Planning & Development



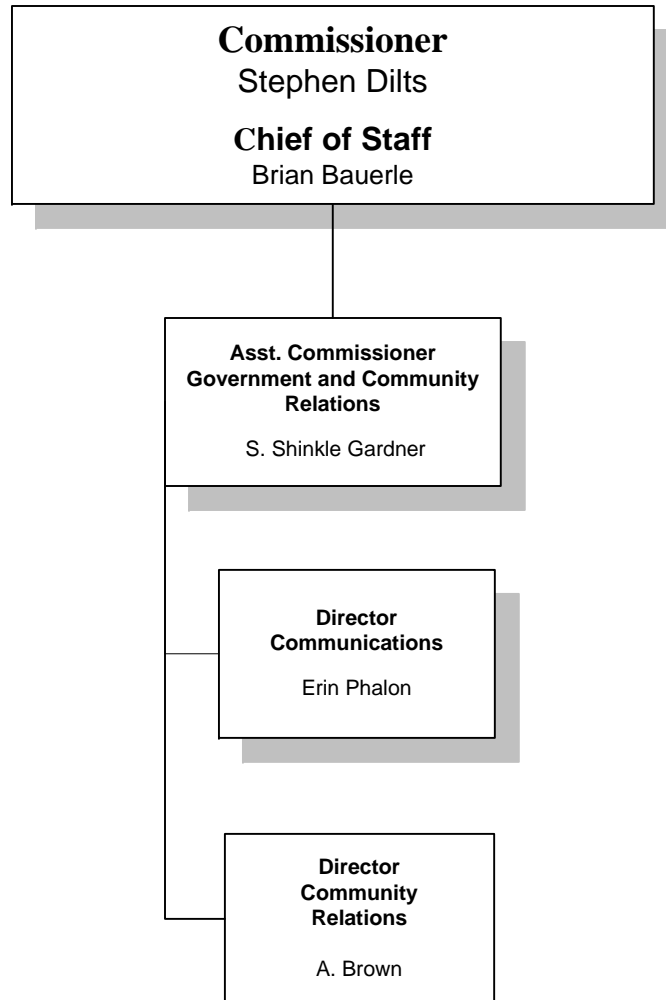


# New Jersey Department of Transportation Organization Chart

December 2008



## *Government and Community Relations*





# New Jersey Department of Transportation Organization Chart

December 2008

## Legislation, Regulation & Multimodal Services

