










P

FEDERAL ACCOUNT SYMBOL

 Treasury_Department_Code
 Treasury_Account_Main_Code
 Account_Reuse_Number
Budget_Agency_Code (FK)
Budget_Bureau_Code (FK)
Budget_Account_Code (FK)
Federal_Account_Symbol_Title
Fund_Type
Budget_Publication_Flag
Financing_Account_Indicator
Start_Date
End_Date
FAS_User_Stamp
FAS_Date_Stamp
FAS_Time_Stamp

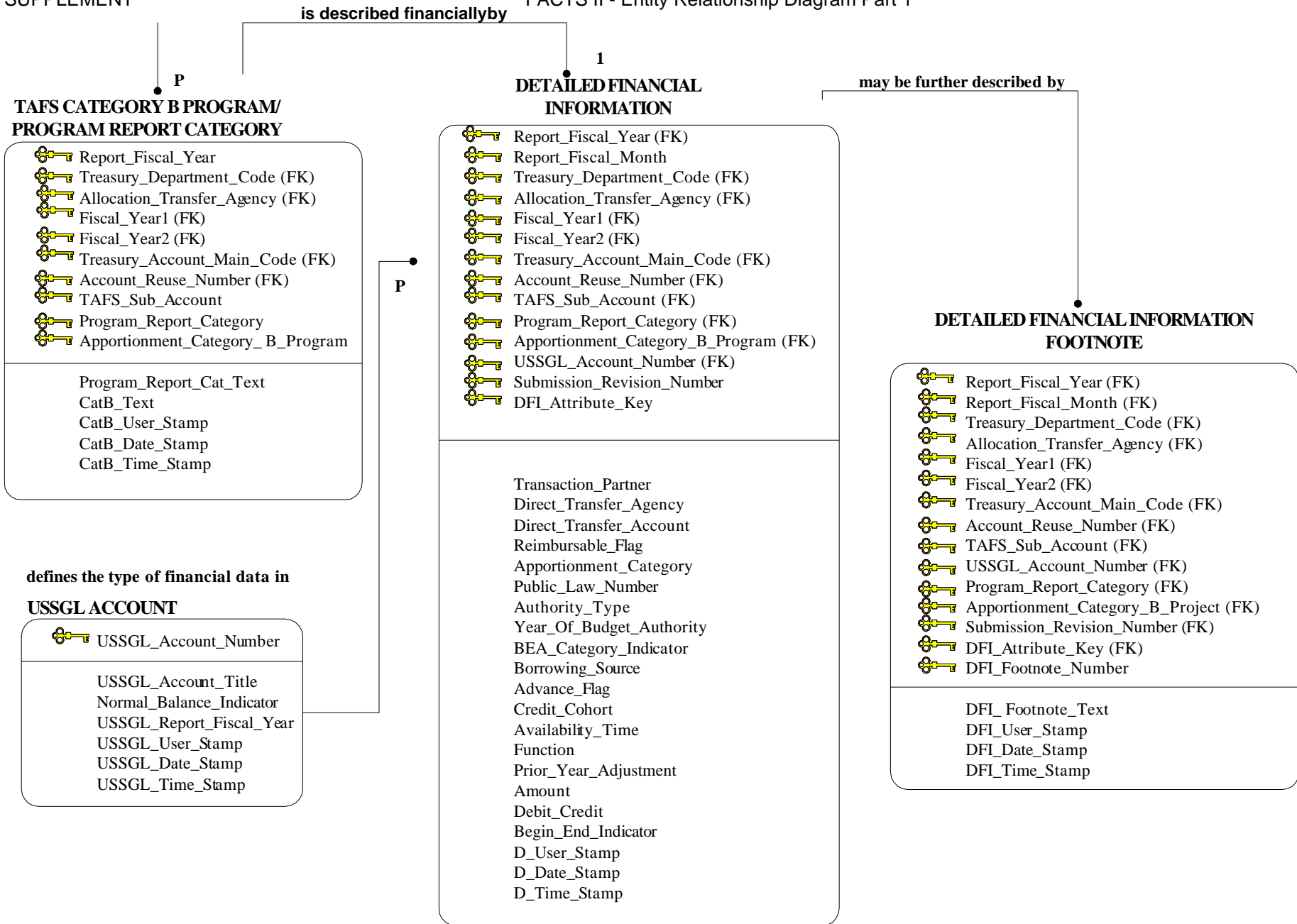
is fiscally divided into

TREASURY APPROPRIATION/FUND SYMBOL (TAFS)

 Treasury_Department_Code (FK)
 Allocation_Transfer_Agency
 Fiscal_Year1
 Fiscal_Year2
 Treasury_Account_Main_Code (FK)
 Account_Reuse_Number (FK)
Availability_Type
Disbursing_Authority_End_Date
Report_Submission_Flag
Expiration_Flag
Definite_Indefinite_Flag
TAFS_Status
TAFS_User_Stamp
TAFS_Date_Stamp
TAFS_Time_Stamp

is categorized by

FACTS II - Entity Relationship Diagram Part 1



This page was intentionally left blank.