

Yellowstone's 3rd Caldera-Forming Eruption: Pre- and Post-Volcanic Activity.
Yellowstone National Park
Cat Foley

This document, created by a National Park Service (NPS) volunteer, was made possible by the Geoscientists-In-the-Parks (GIP) Program and its partners. Documents created through the GIP Program are intended to address a variety of park-identified needs including: resource management, education and outreach, interpretation, inventory and monitoring, and research. Documents are not generally peer-reviewed. Quality may vary significantly, and the product may not be finalized. Specific information may have been redacted to protect proprietary information regarding cultural or paleontological resources, and locations of threatened and endangered species.

Views and conclusions in this report are those of the authors and do not necessarily reflect the views or policies of the National Park Service, the NPS-Geologic Resources Division, and its partners. Mention of trade names or commercial products does not constitute endorsement or recommendation for use by the National Park Service.

Documents and related materials are filed with the National Park Service-Geologic Resources Division, and with Yellowstone National Park. Contact Yellowstone National Park for additional information. Cite this document as:

Foley, Catherine, Yellowstone's 3rd Caldera-Forming Eruption: Pre- and Post-Volcanic Activity.. Geoscientists-In-the-Parks document, 2008-YELL. National Park Service, Denver, Colorado.

Please be aware that products produced under the GIP Program do not authorize the collection of, or damage to park resources. The NPS specifically prohibits the damaging or collecting of natural, cultural, and archeological resources on federal lands under its regulations at 36 CFR §2.1.

Yellowstone's 3rd Caldera-Forming Eruption: Pre- and Post-Volcanic Activity

Montana

A presentation by Yellowstone National Park Geology Program in collaboration with the Geological Society of America GeoCorps America Program.



Idaho



Wyoming

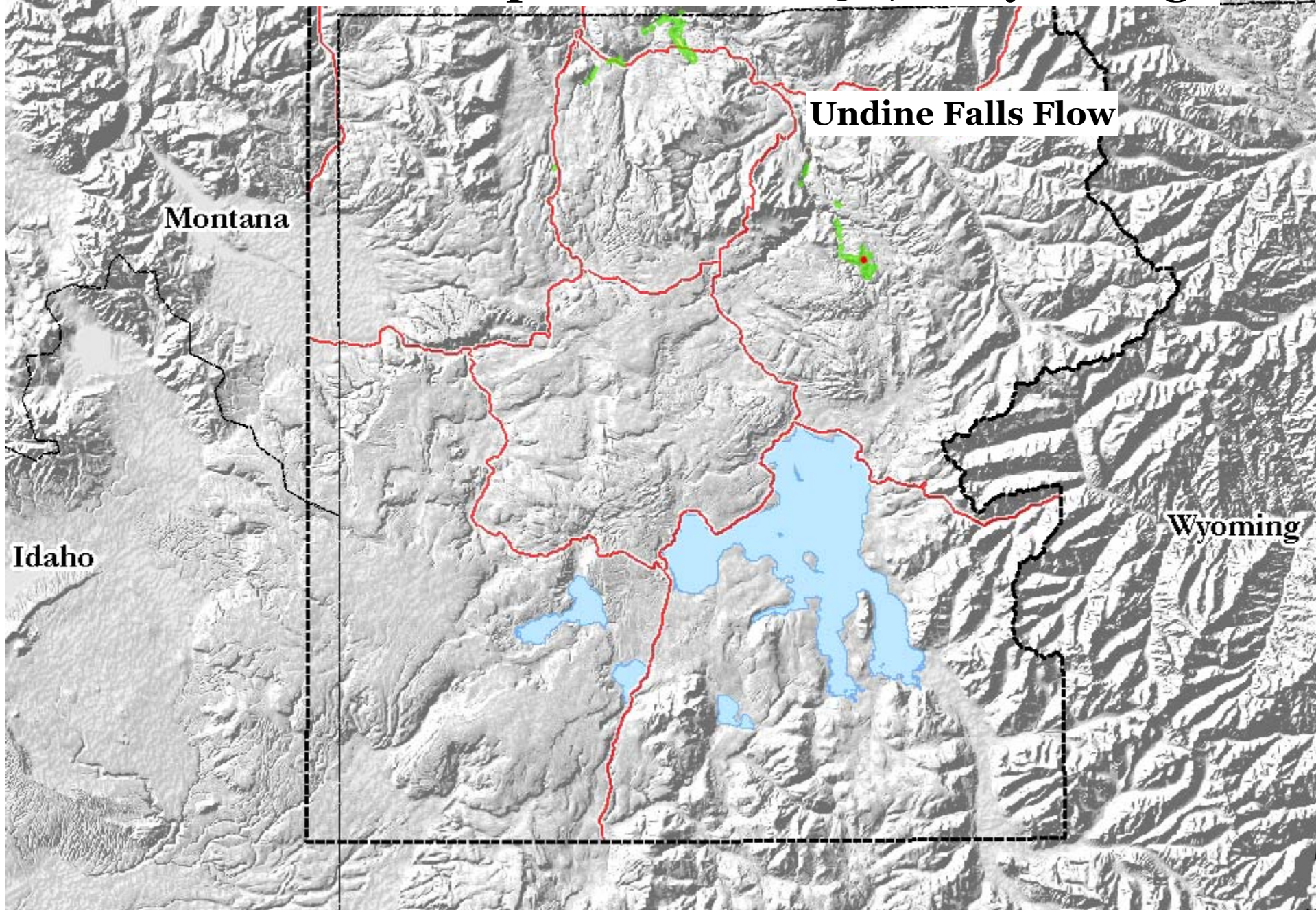
August 2008

Created by Catherine Foley
2008 GSA GeoCorps intern

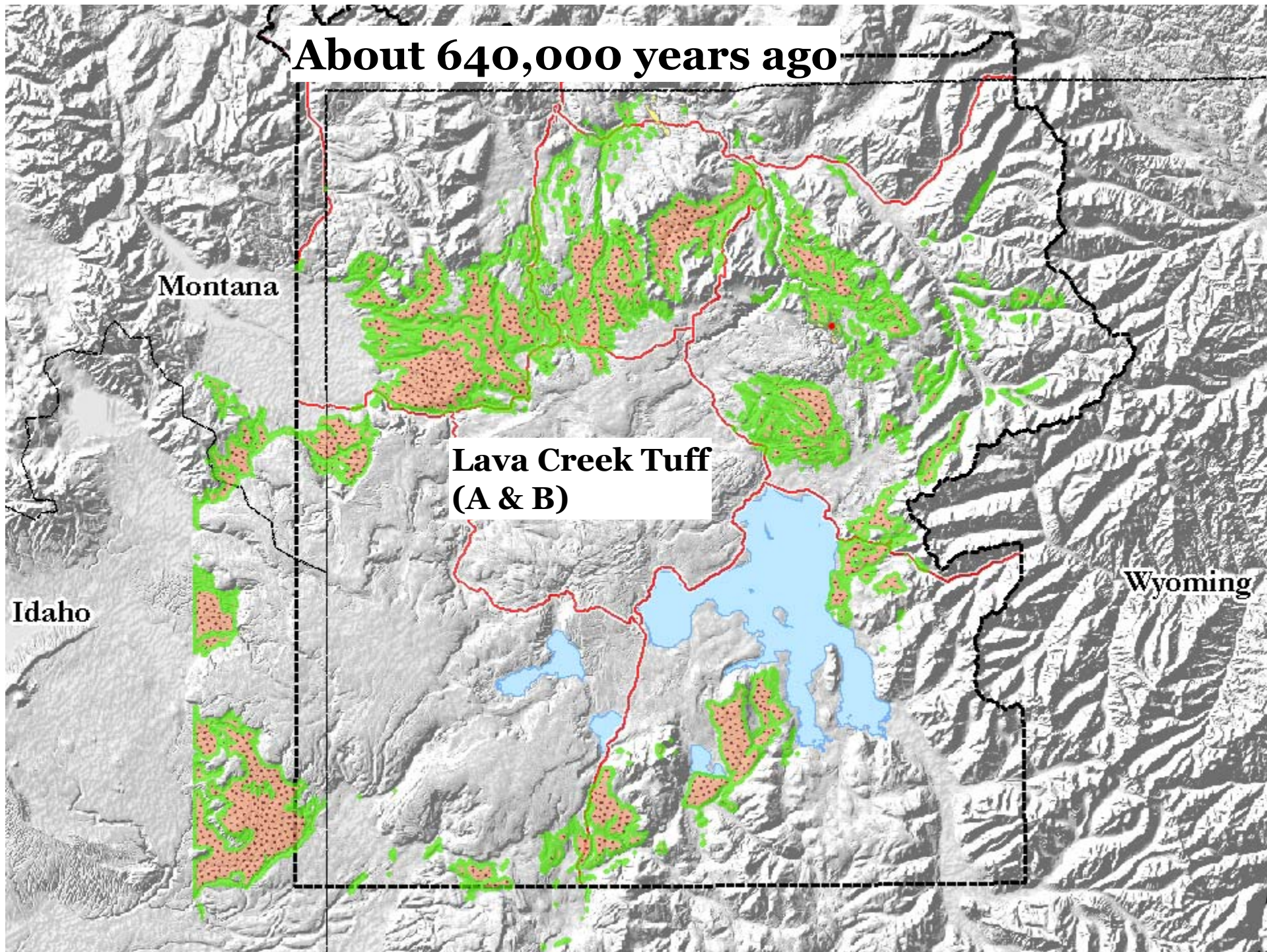


SCIENCE • STEWARDSHIP • SERVICE

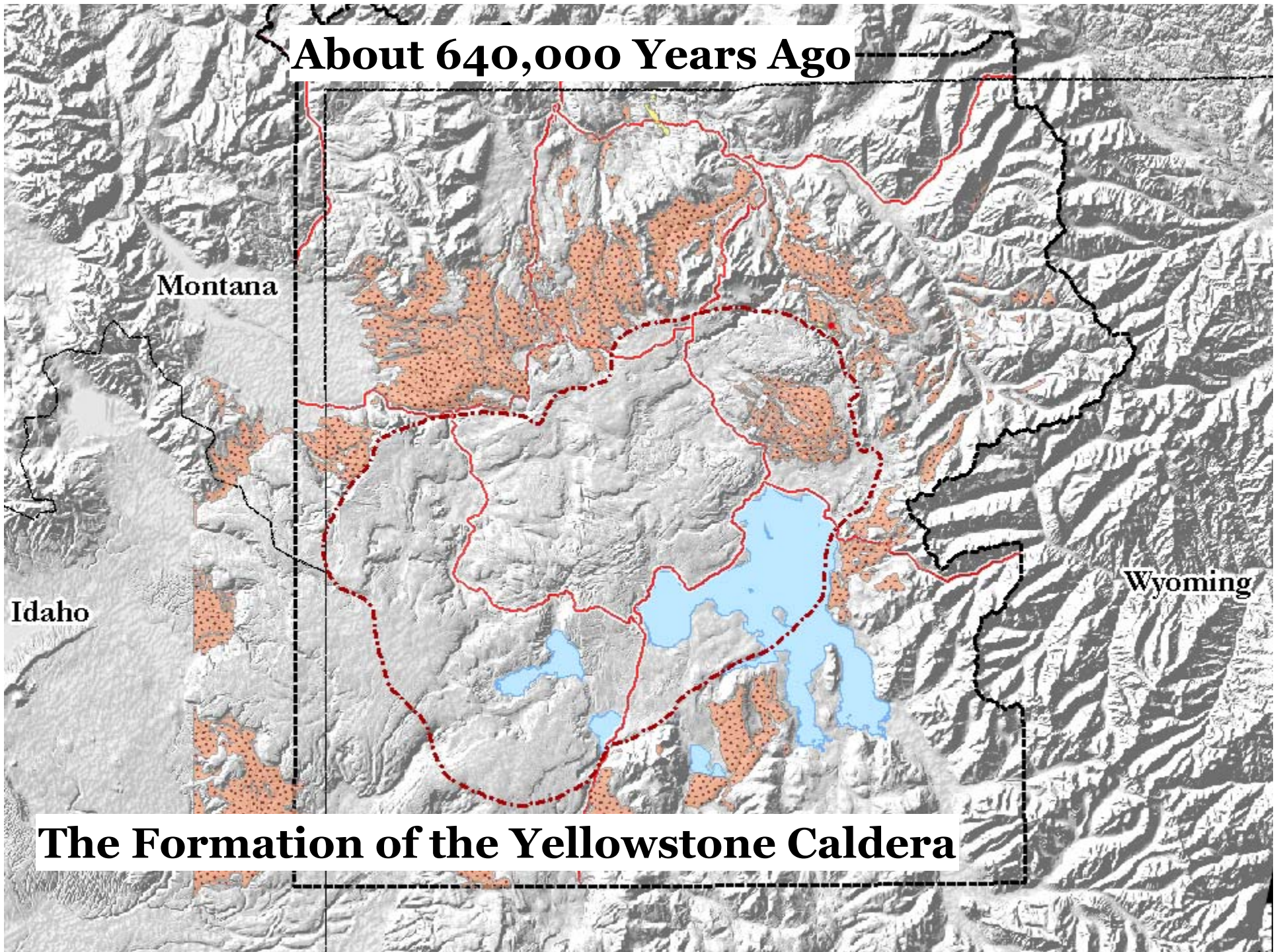
Pre-Caldera Eruption: About 650,000 years ago



About 640,000 years ago

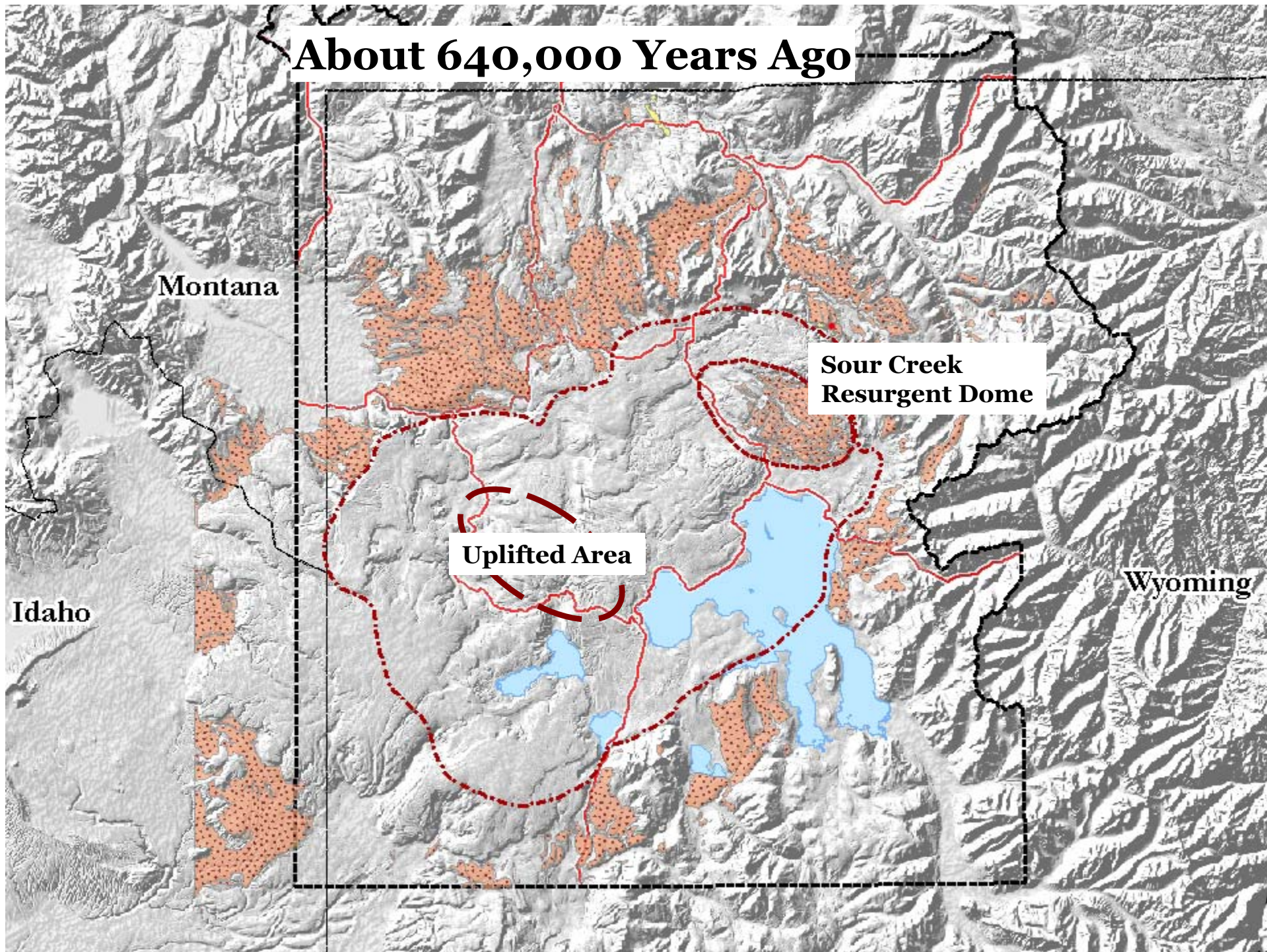


About 640,000 Years Ago



The Formation of the Yellowstone Caldera

About 640,000 Years Ago



Montana

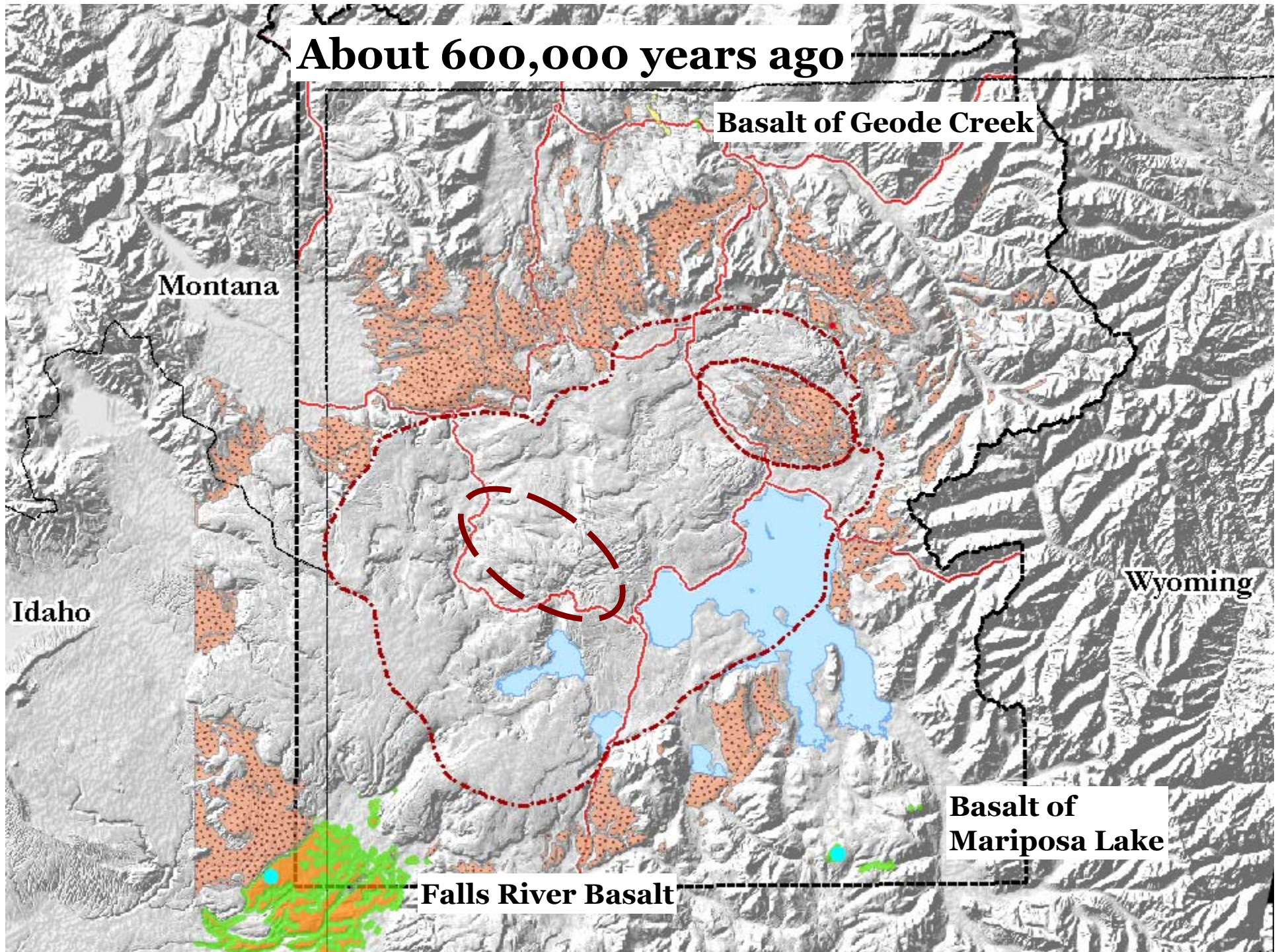
Sour Creek
Resurgent Dome

Uplifted Area

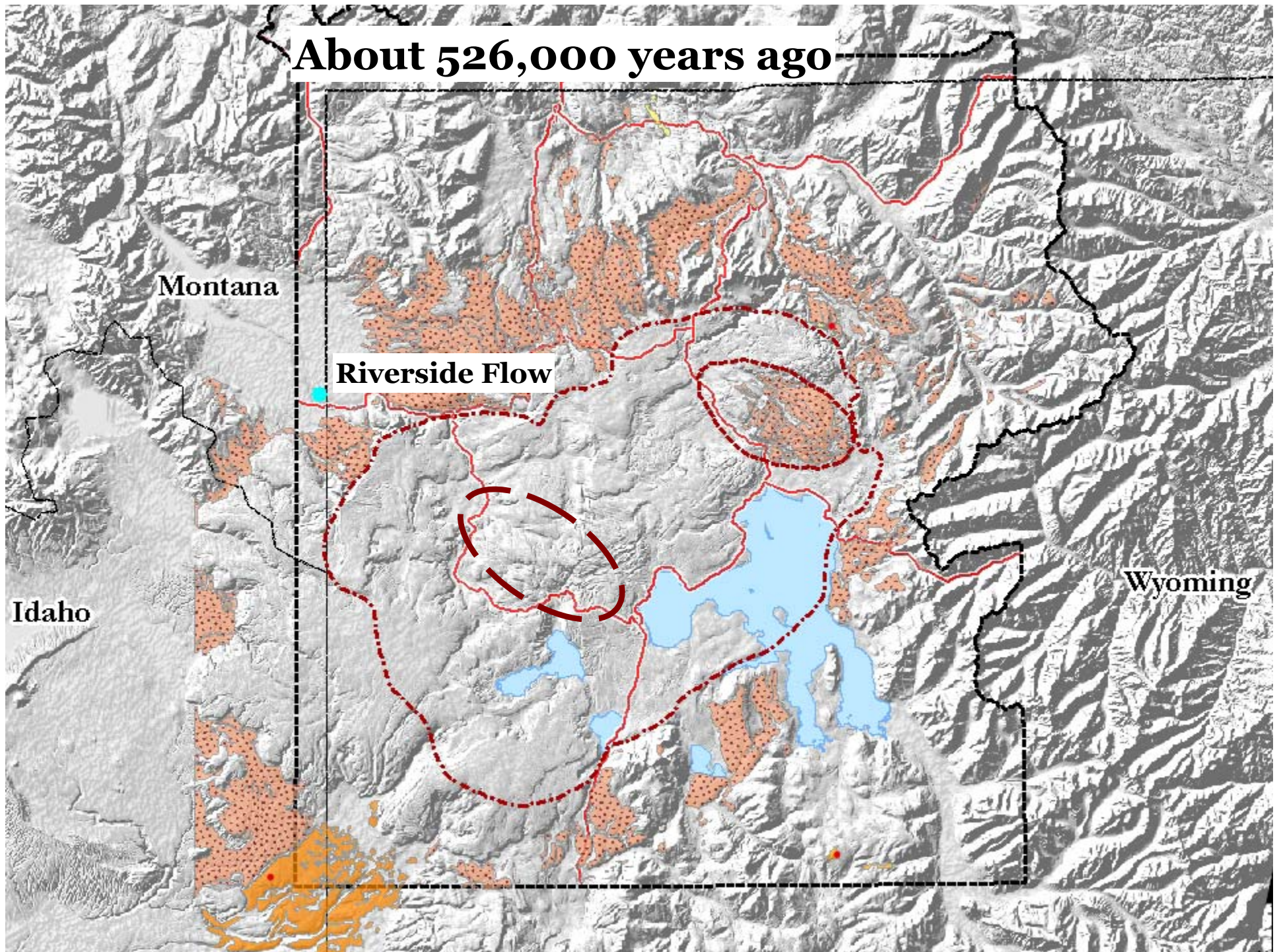
Idaho

Wyoming

About 600,000 years ago



About 526,000 years ago



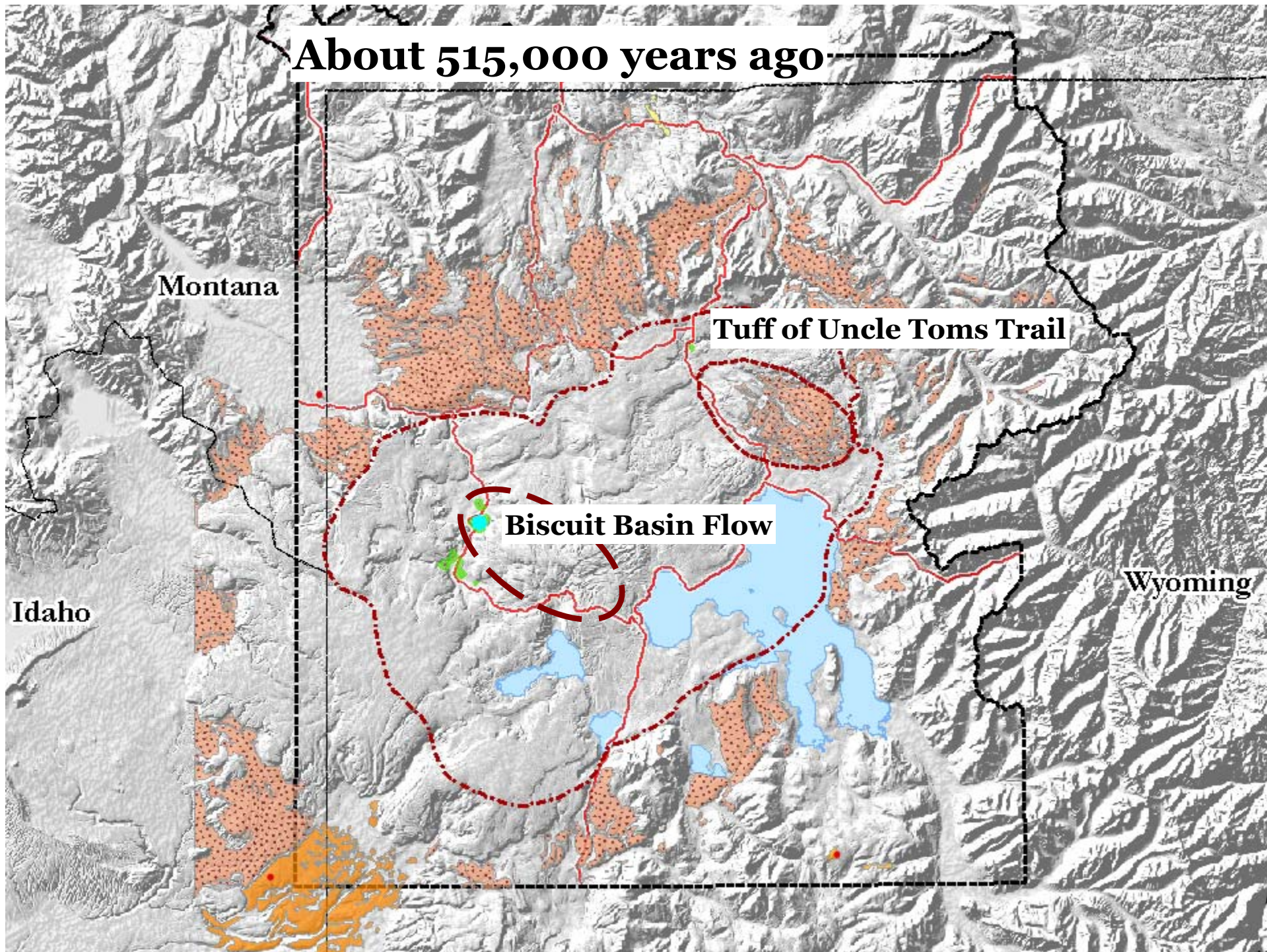
Montana

Riverside Flow

Idaho

Wyoming

About 515,000 years ago



Montana

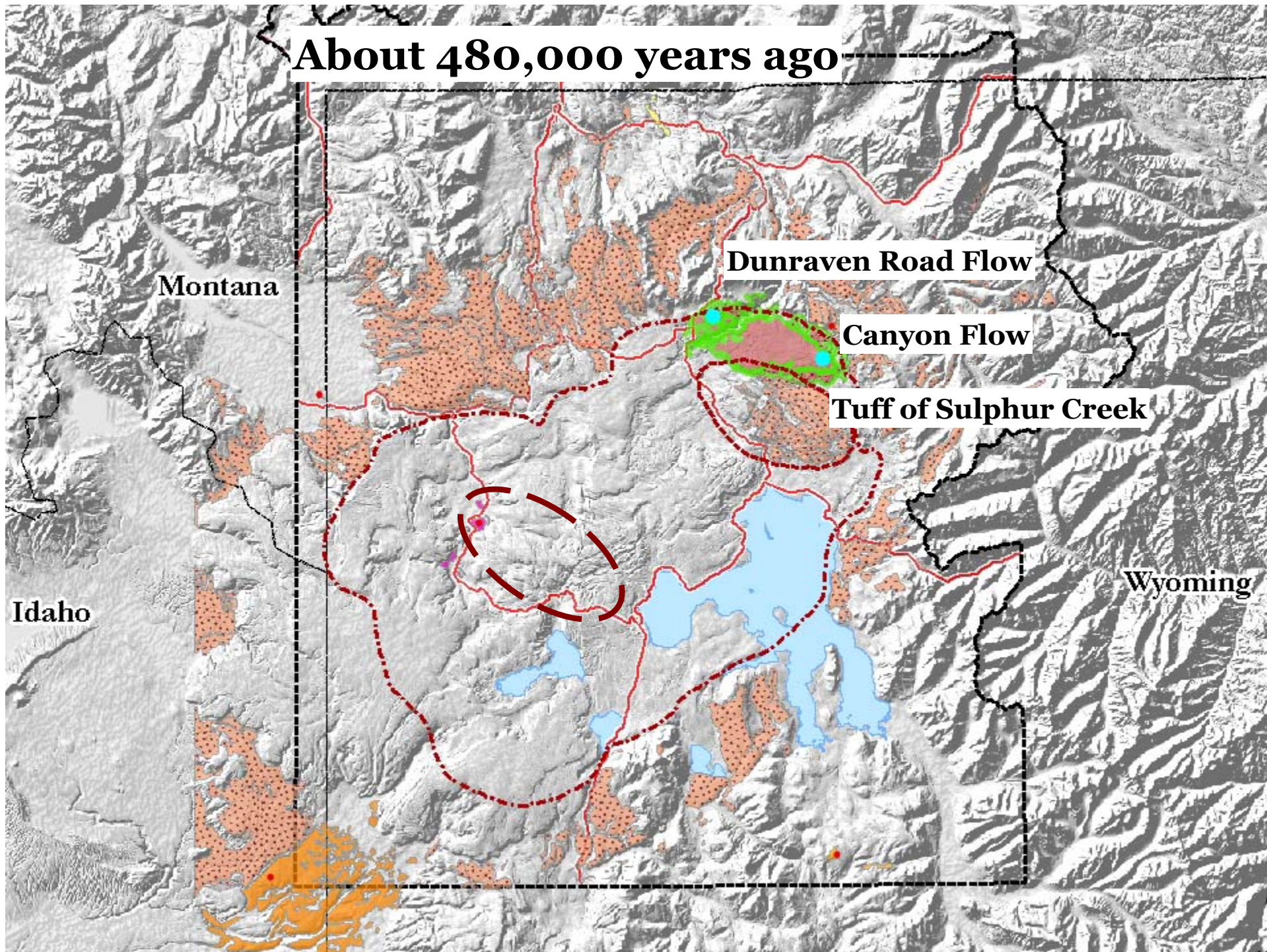
Tuff of Uncle Toms Trail

Biscuit Basin Flow

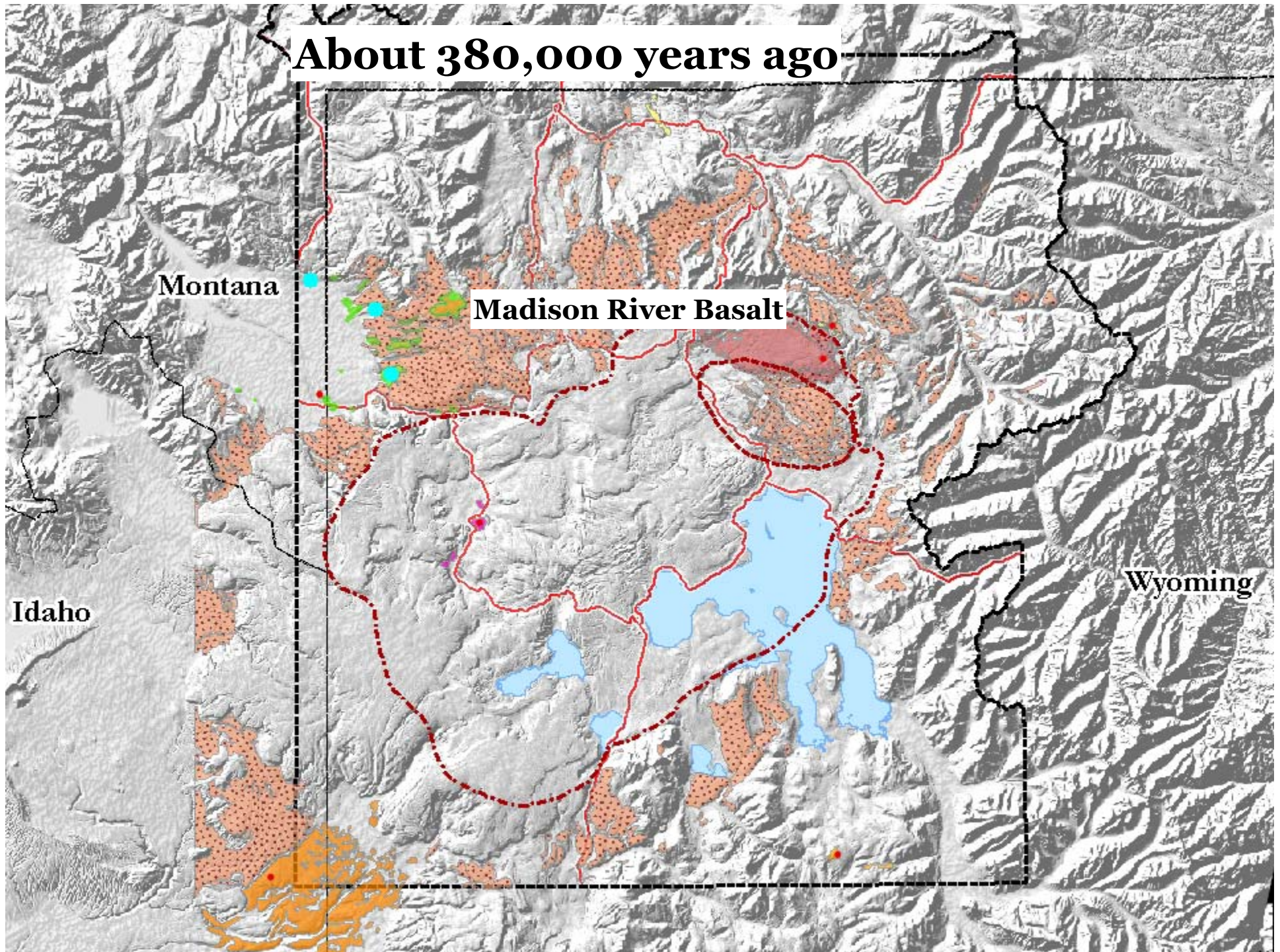
Idaho

Wyoming

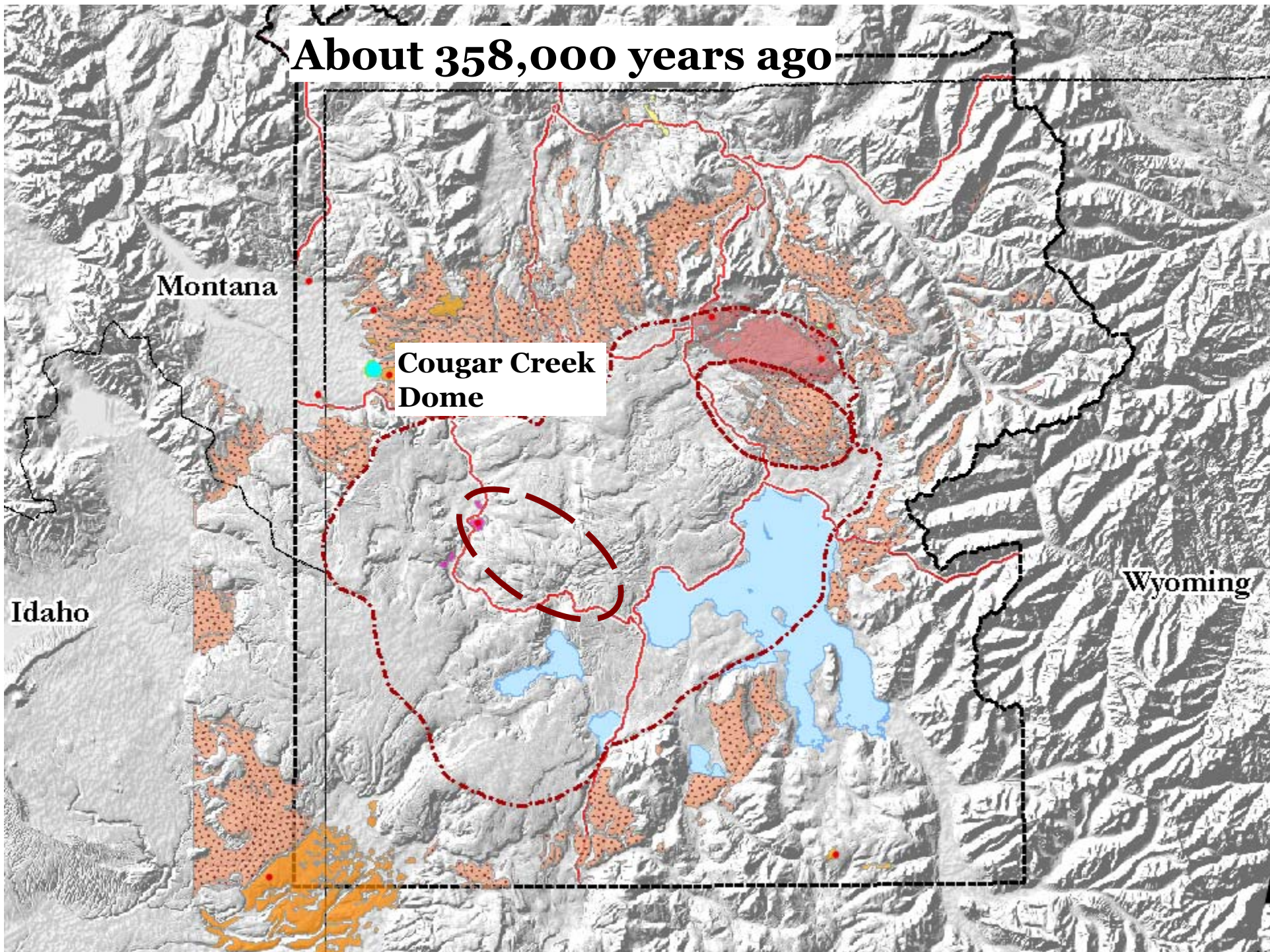
About 480,000 years ago



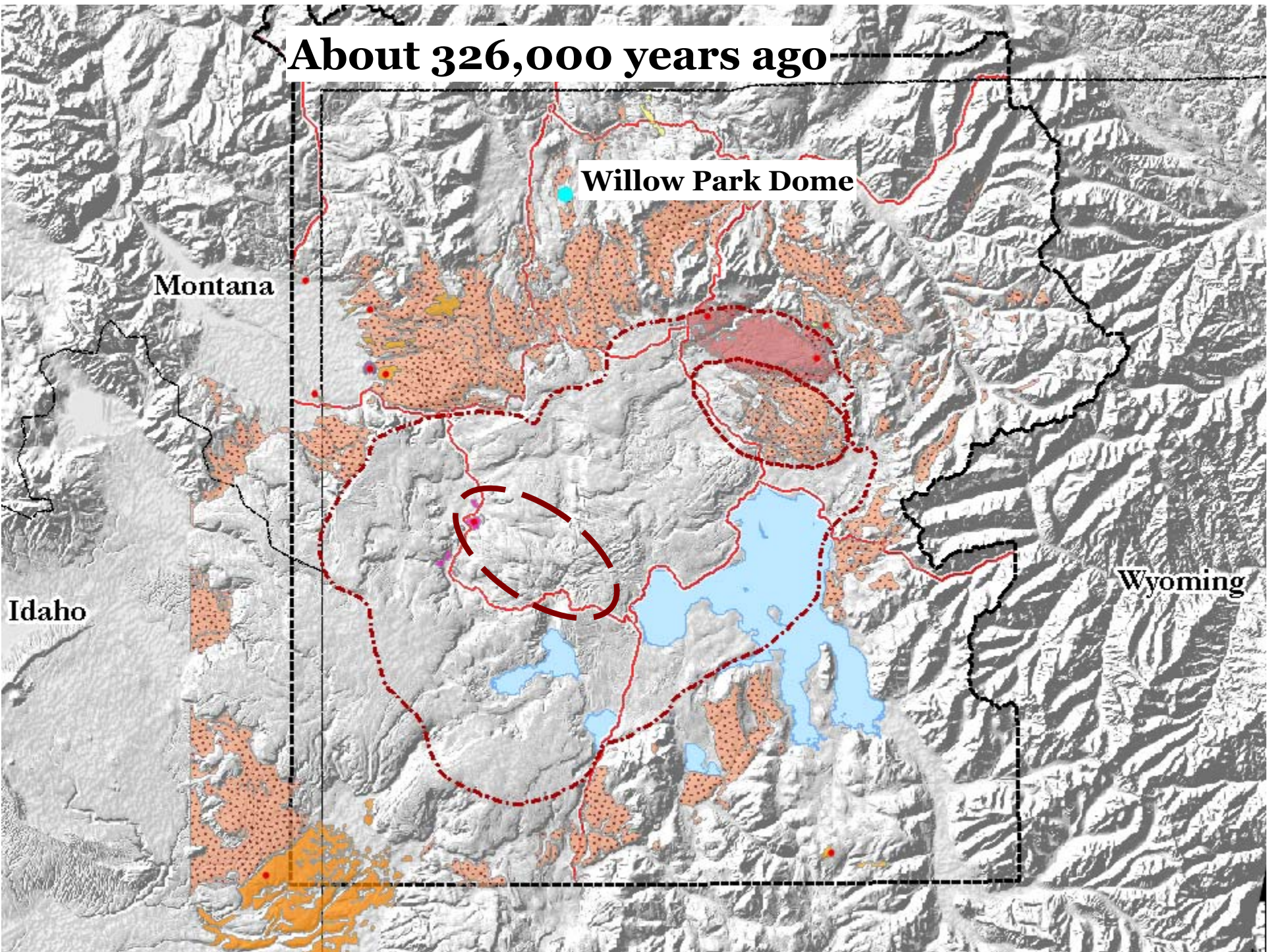
About 380,000 years ago



About 358,000 years ago



About 326,000 years ago



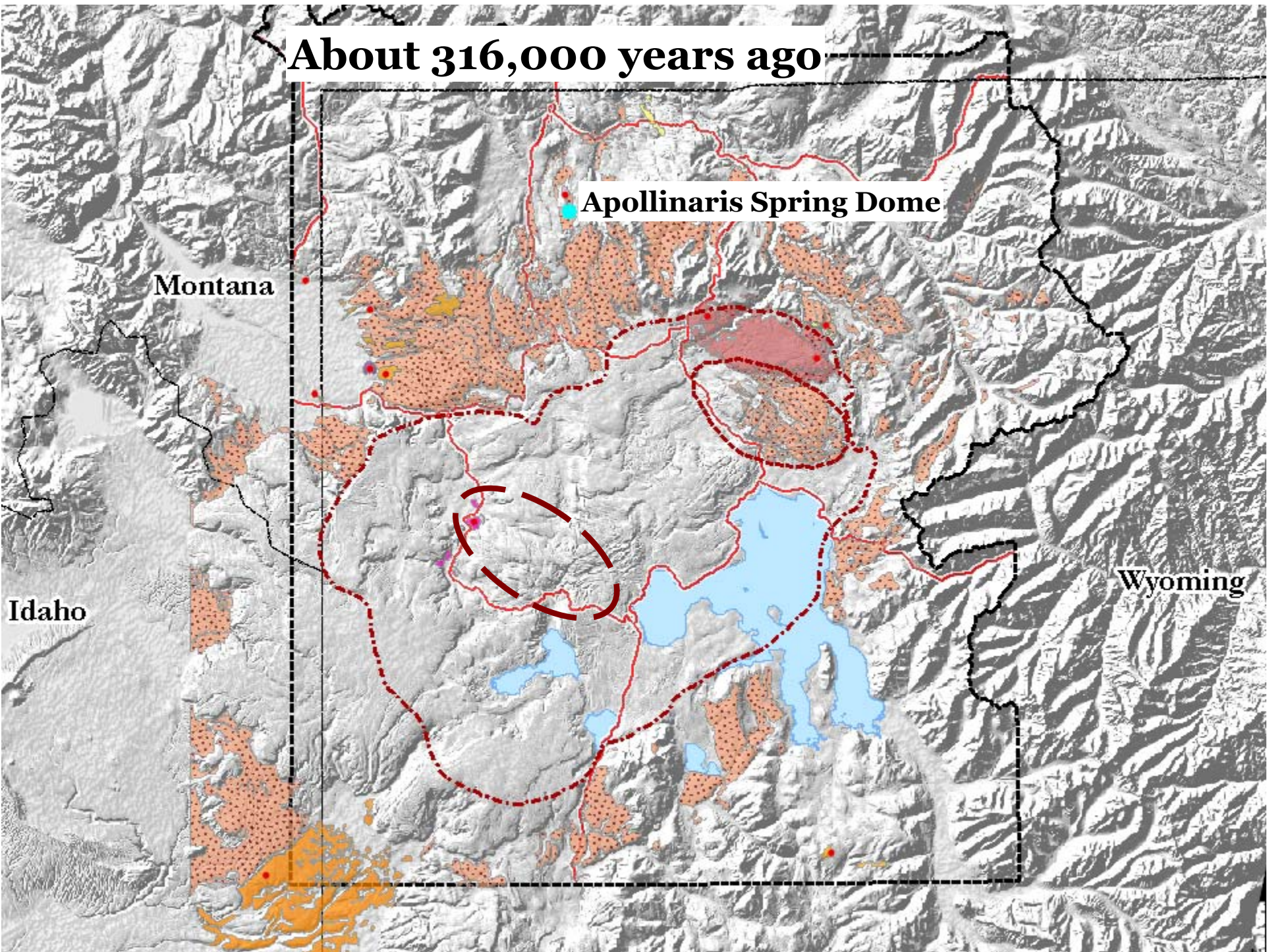
Willow Park Dome

Montana

Idaho

Wyoming

About 316,000 years ago



Apollinaris Spring Dome

Montana

Idaho

Wyoming

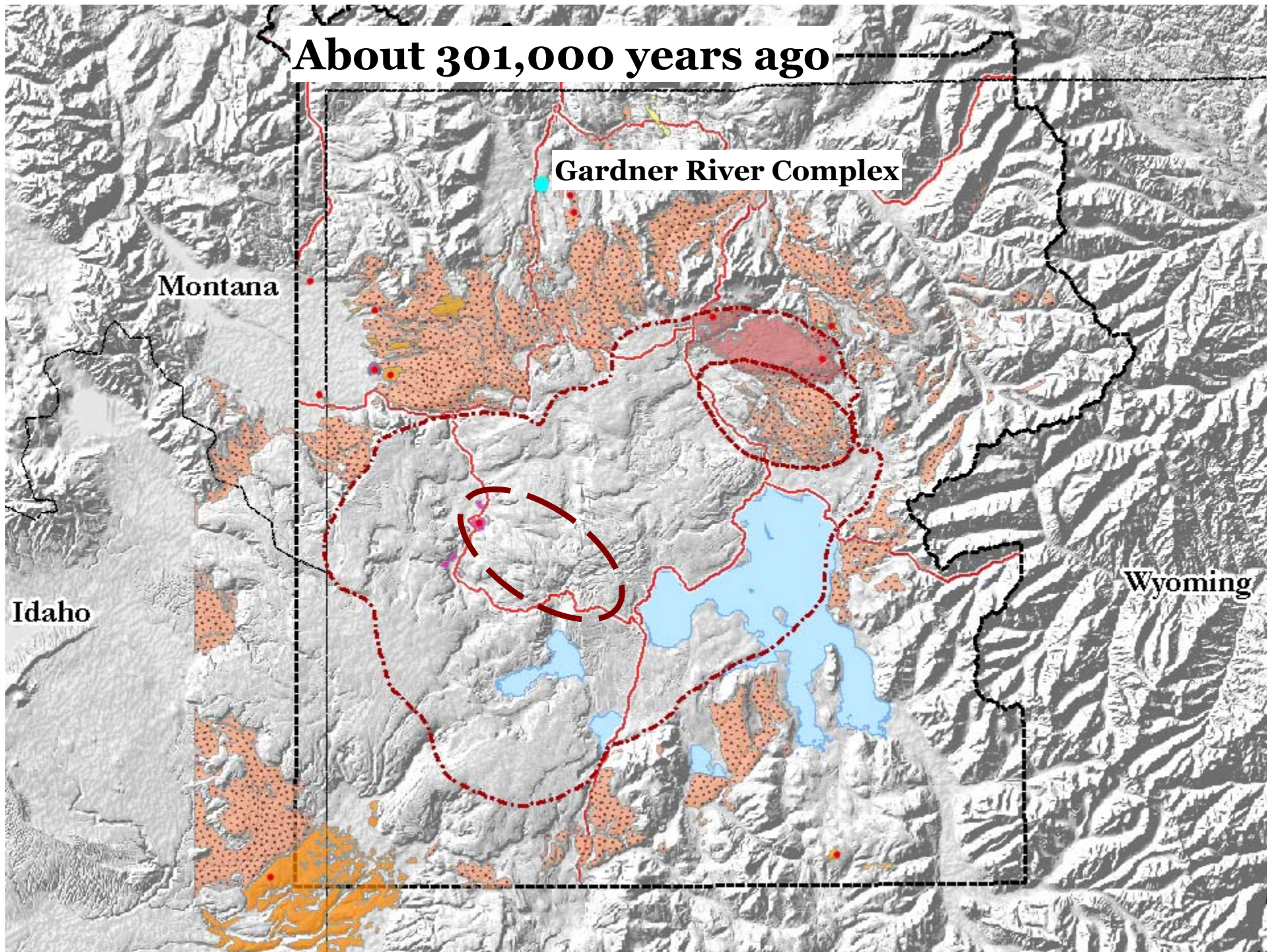
About 301,000 years ago

Gardner River Complex

Montana

Idaho

Wyoming



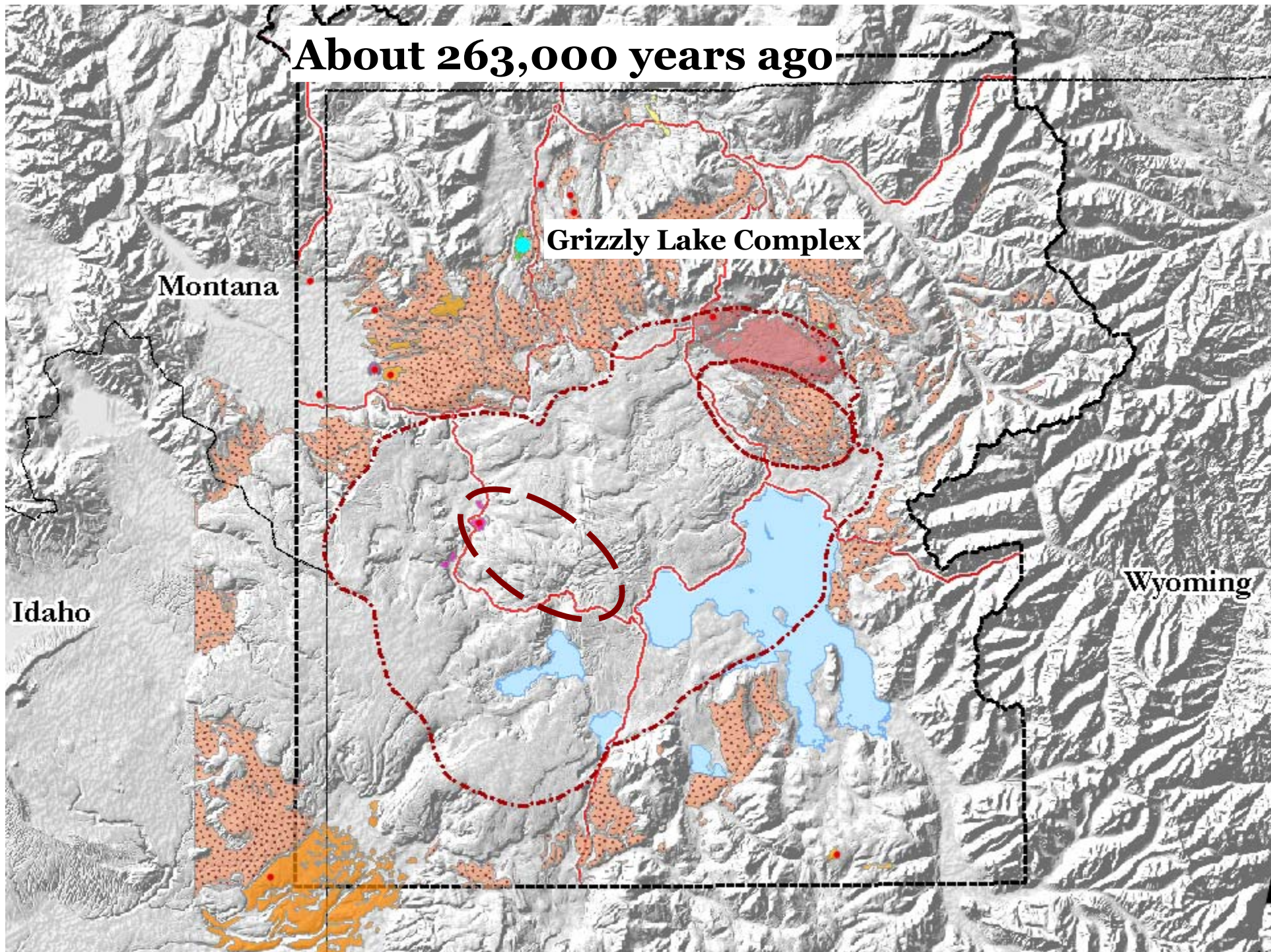
About 263,000 years ago

Grizzly Lake Complex

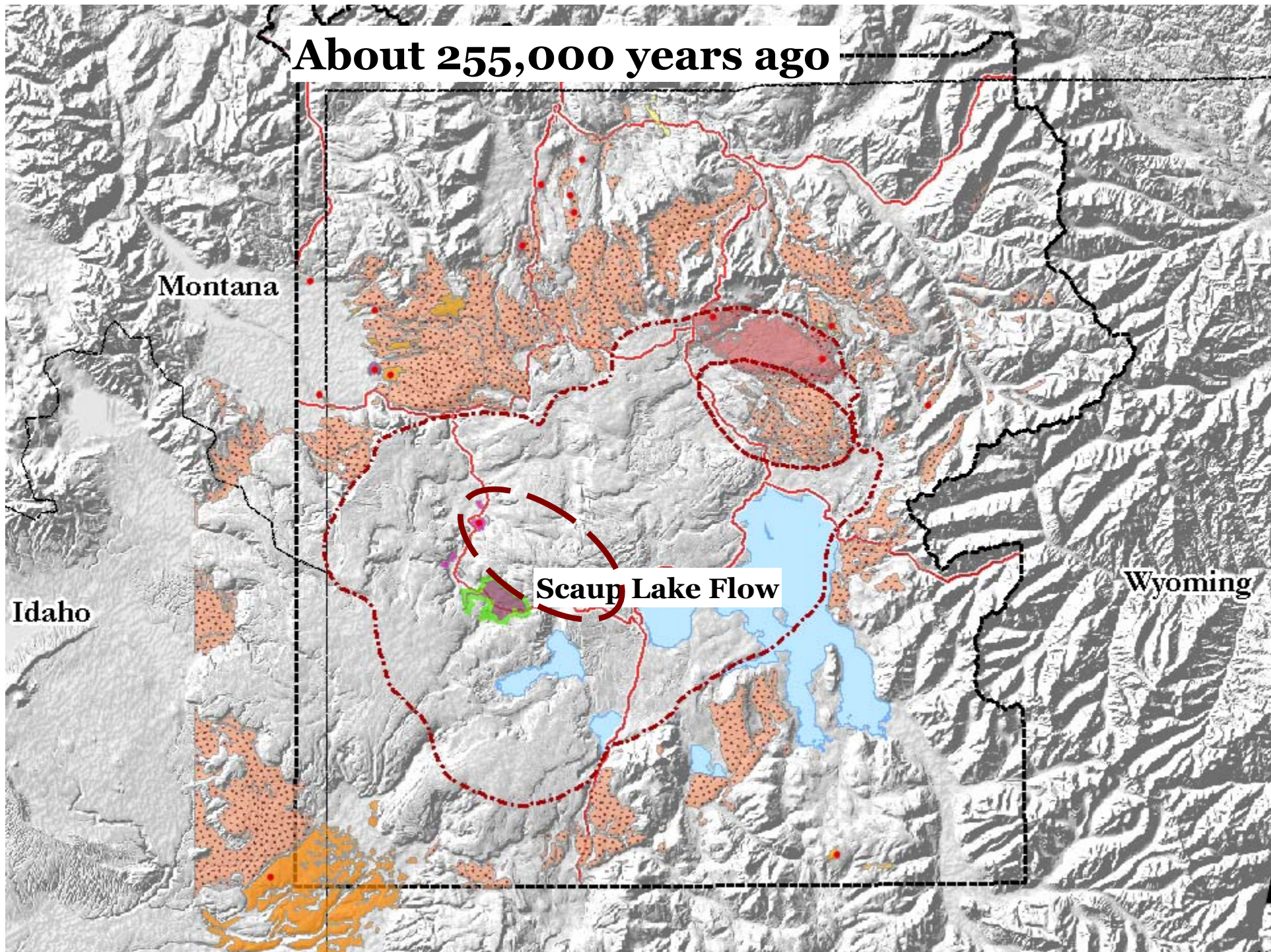
Montana

Idaho

Wyoming



About 255,000 years ago



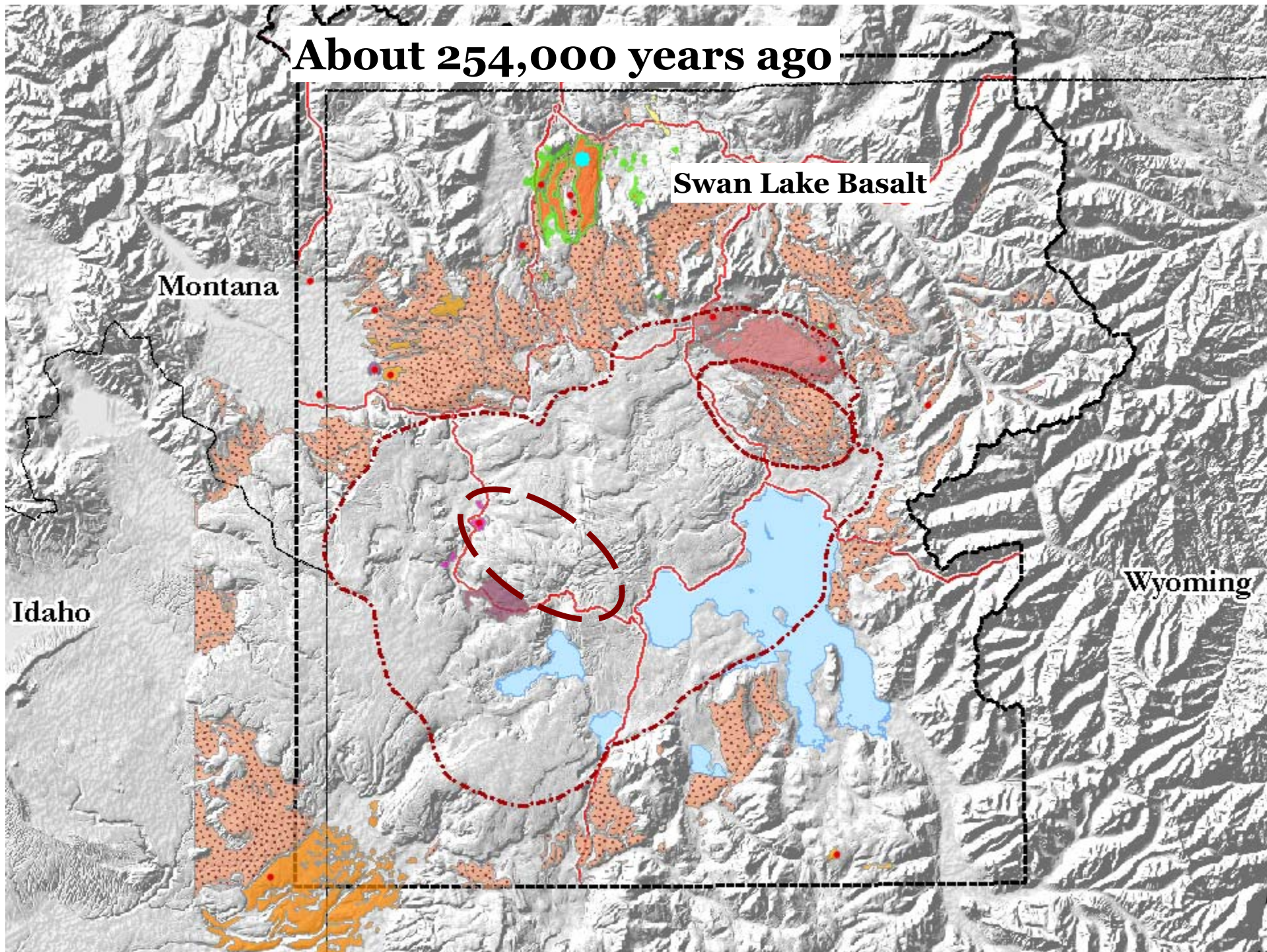
Montana

Idaho

Scaup Lake Flow

Wyoming

About 254,000 years ago



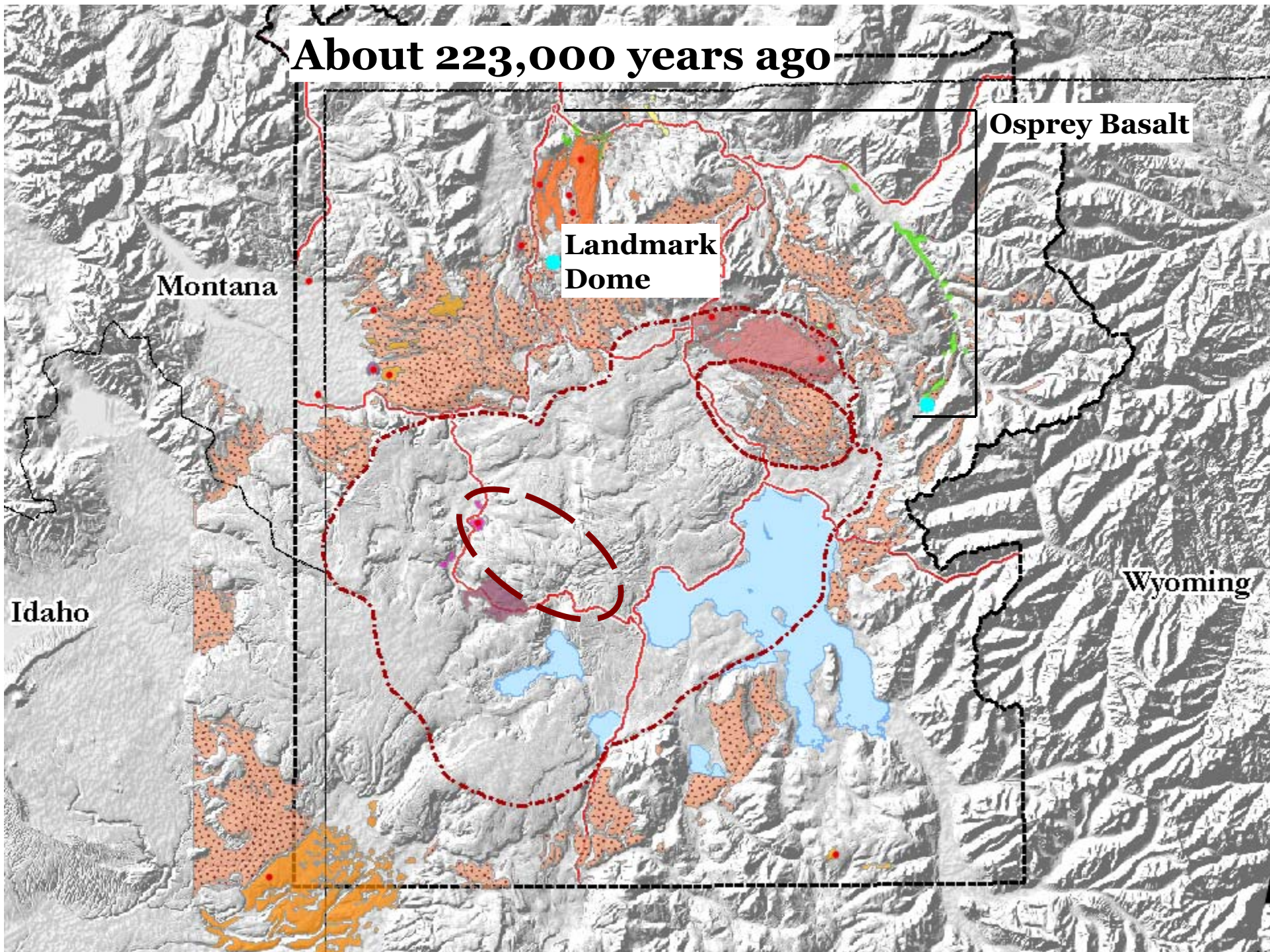
Swan Lake Basalt

Montana

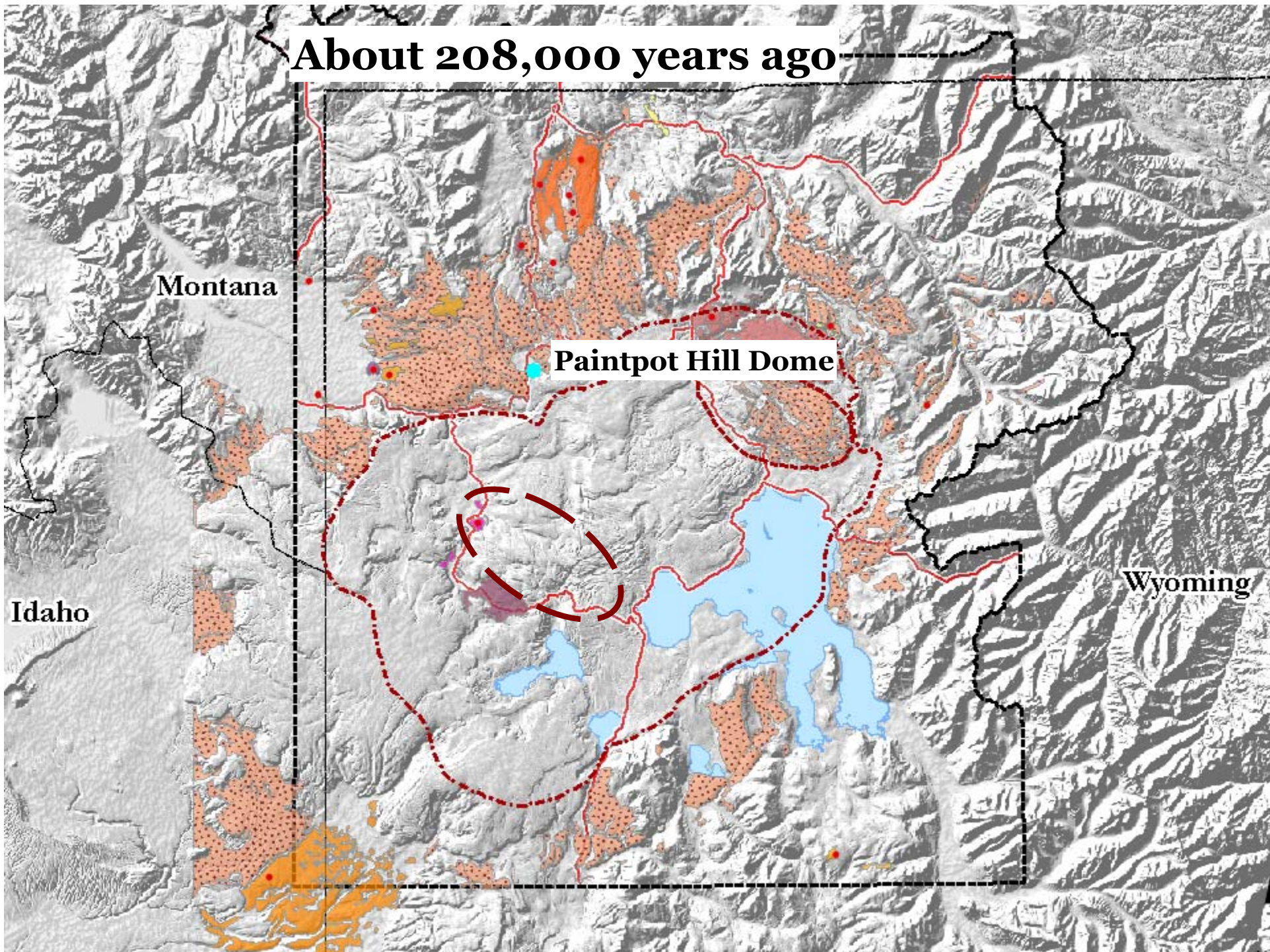
Idaho

Wyoming

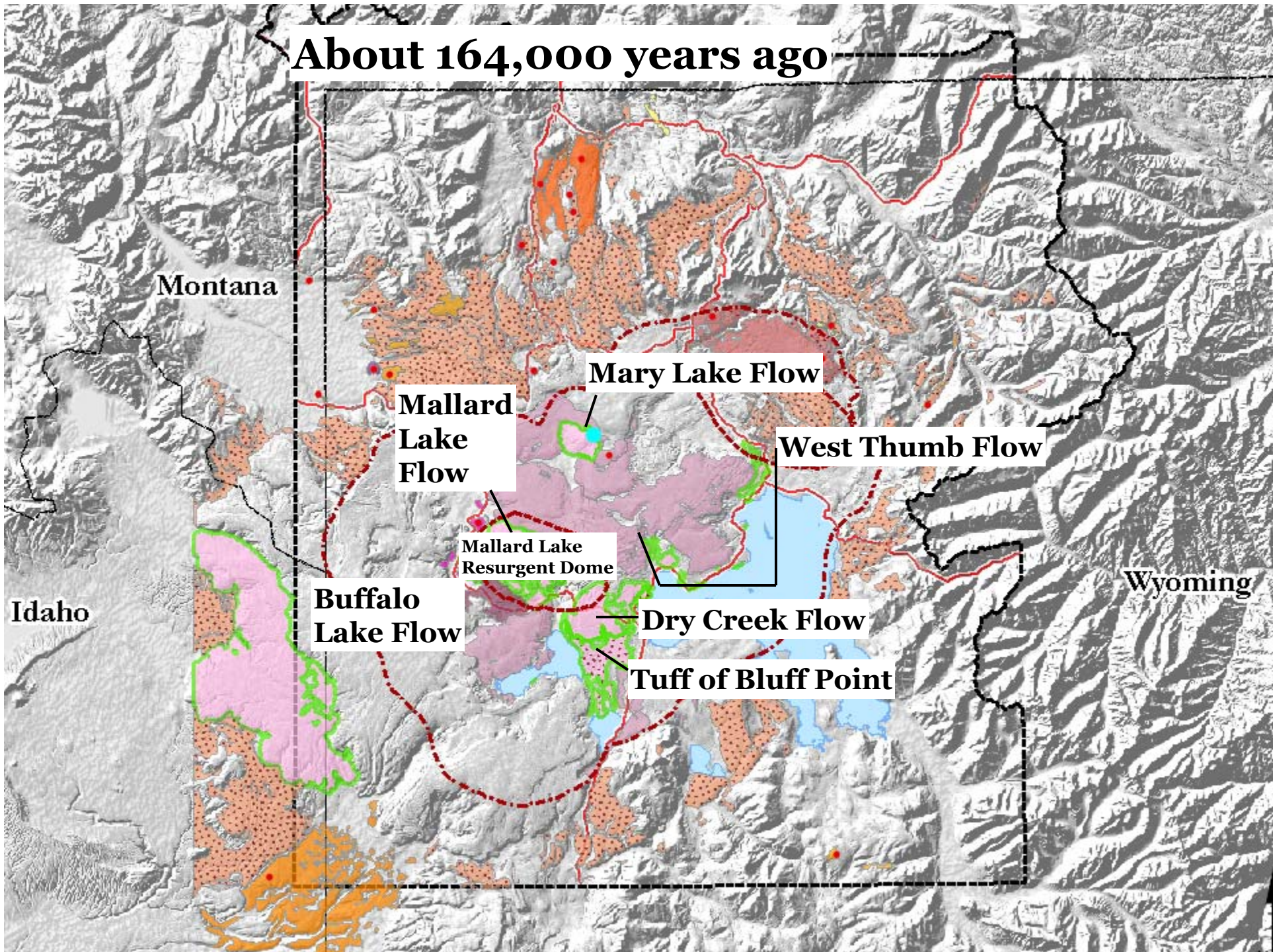
About 223,000 years ago



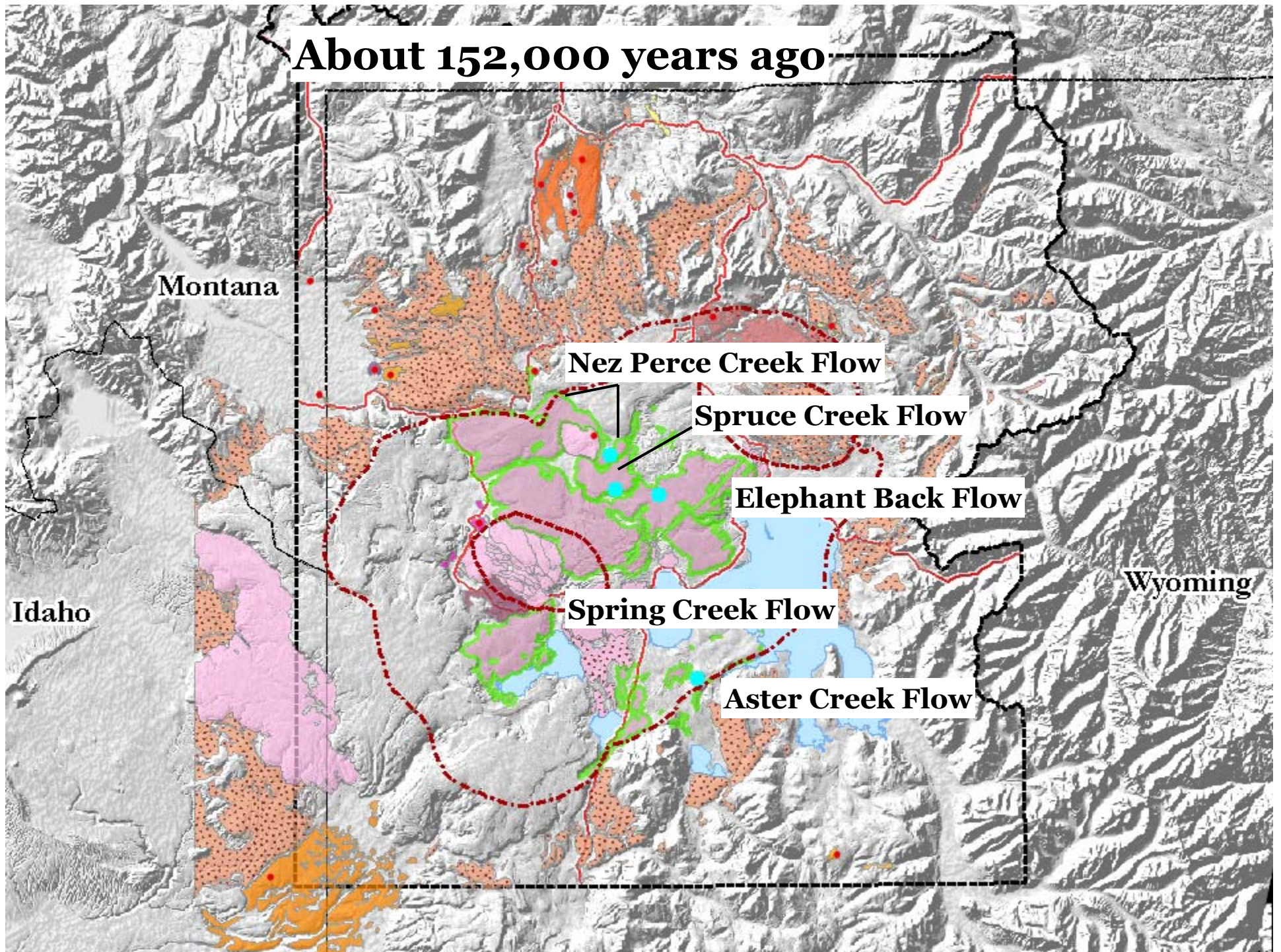
About 208,000 years ago



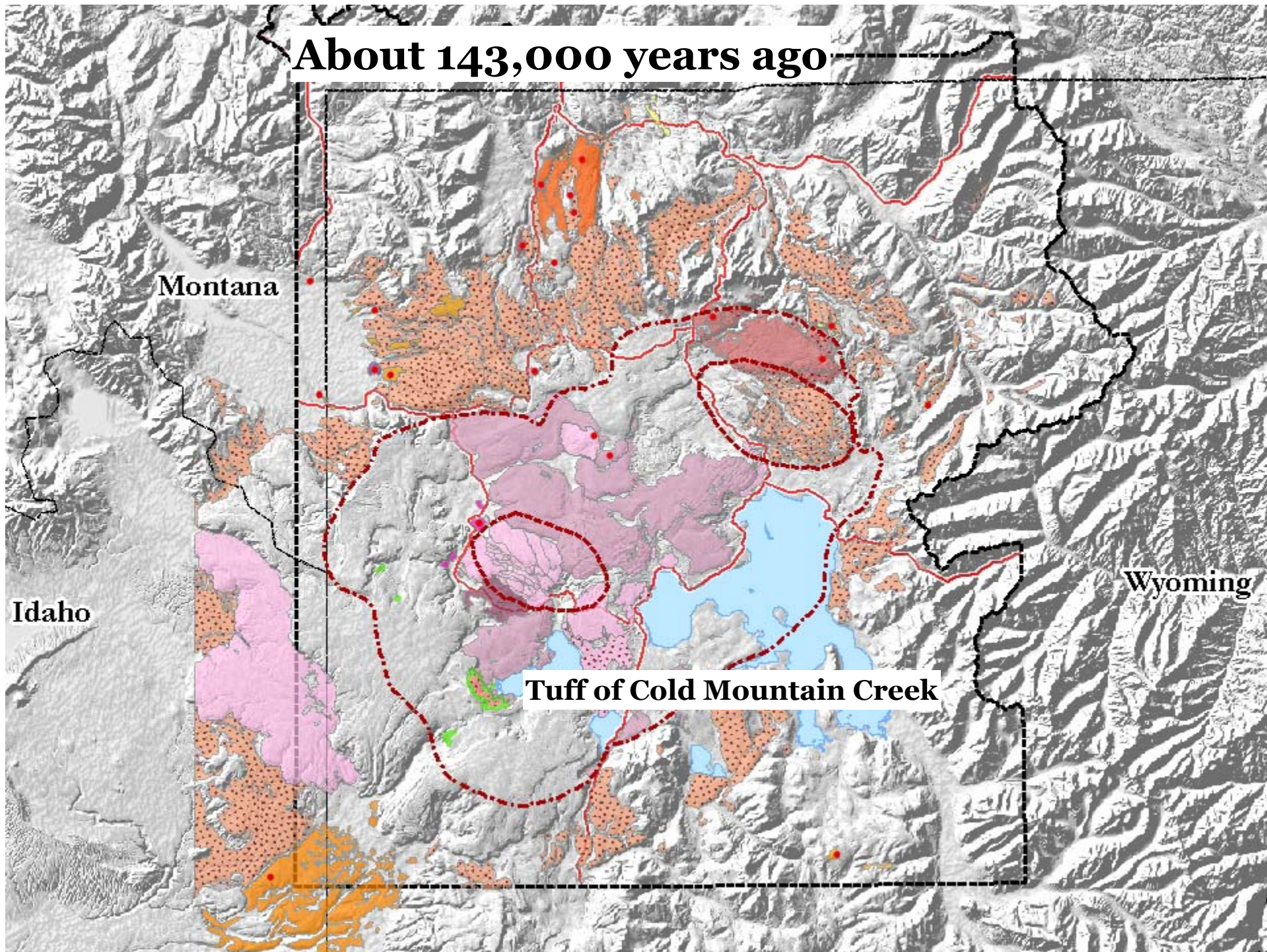
About 164,000 years ago



About 152,000 years ago



About 143,000 years ago



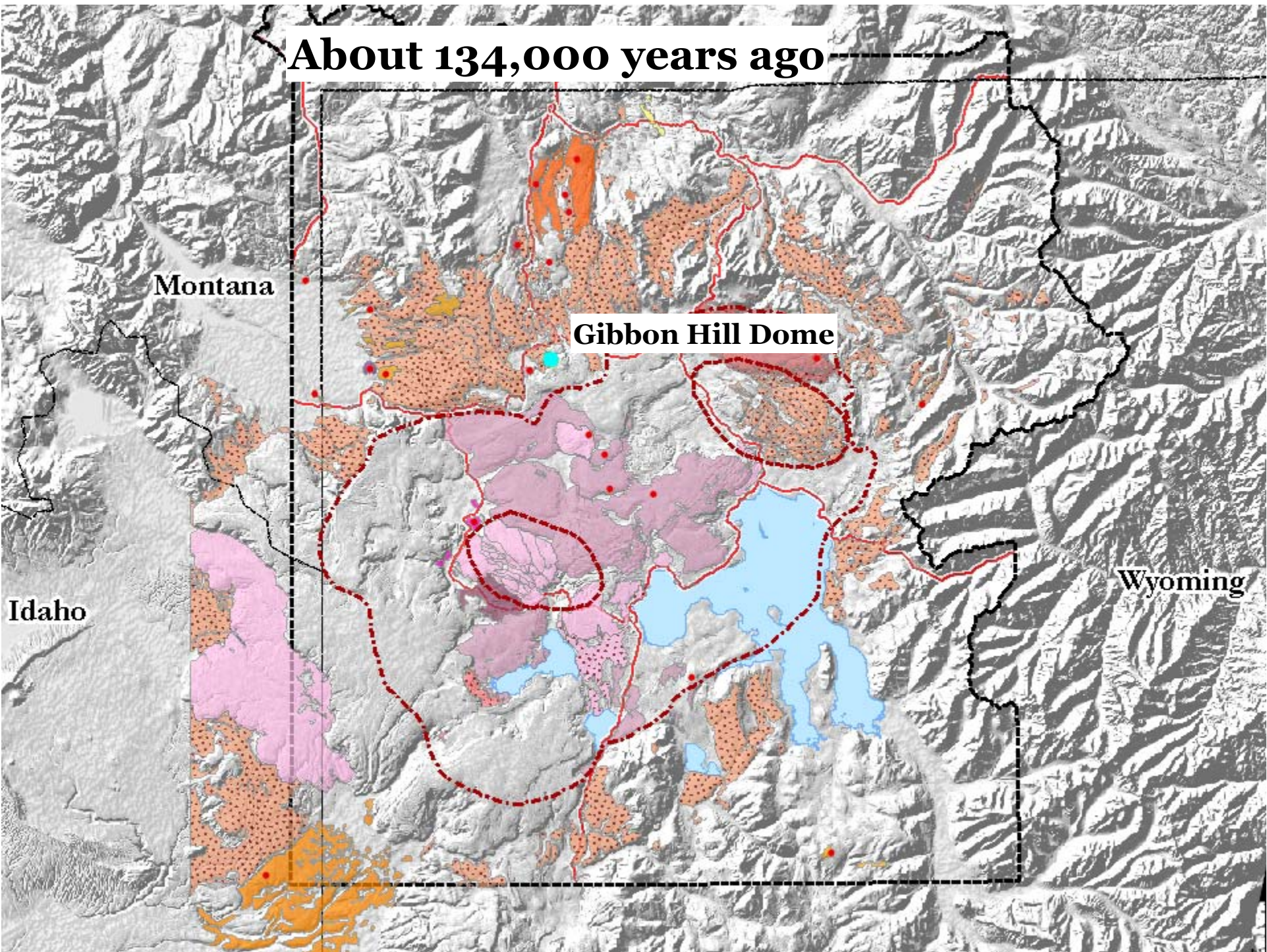
Montana

Idaho

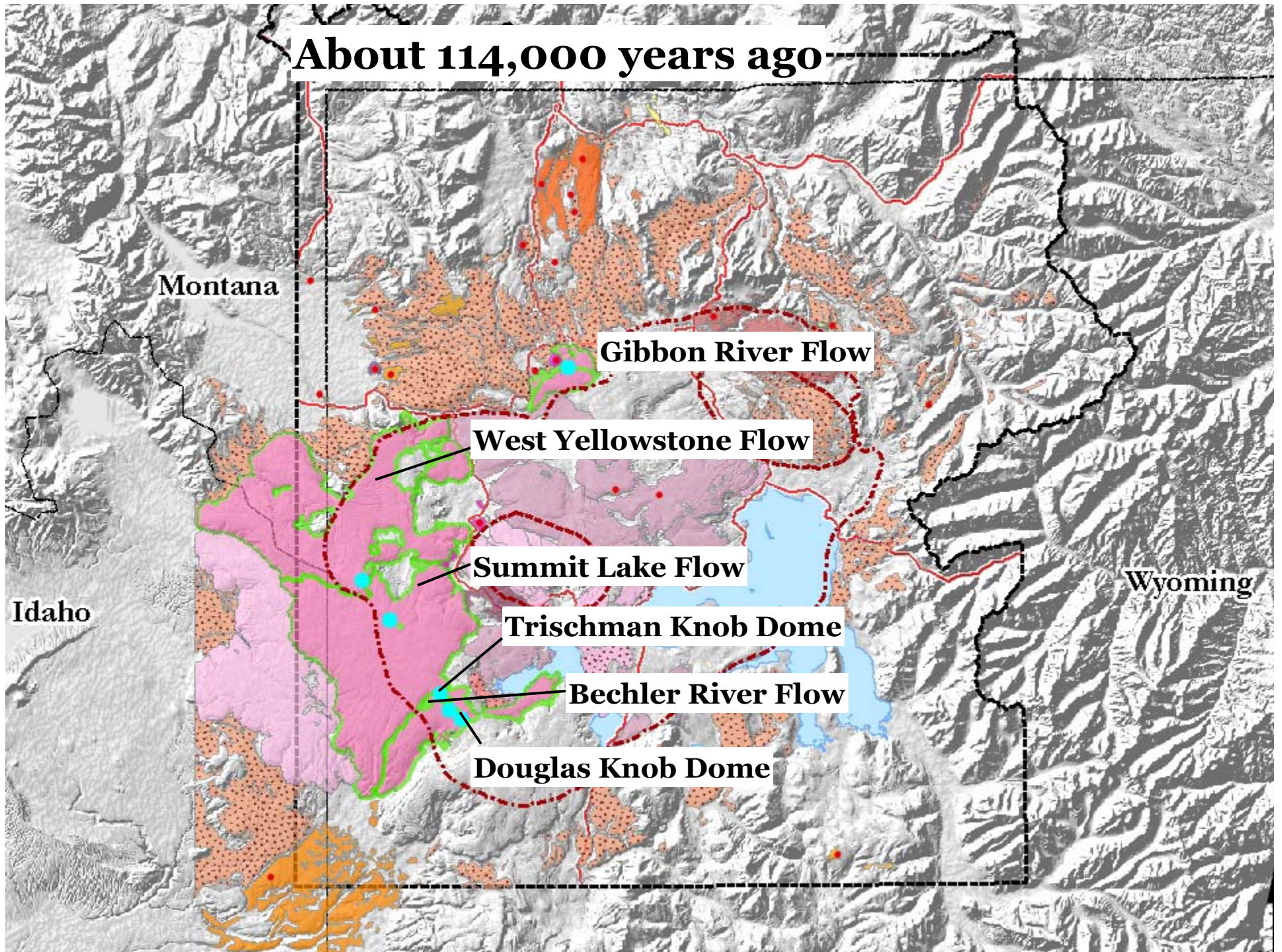
Wyoming

Tuff of Cold Mountain Creek

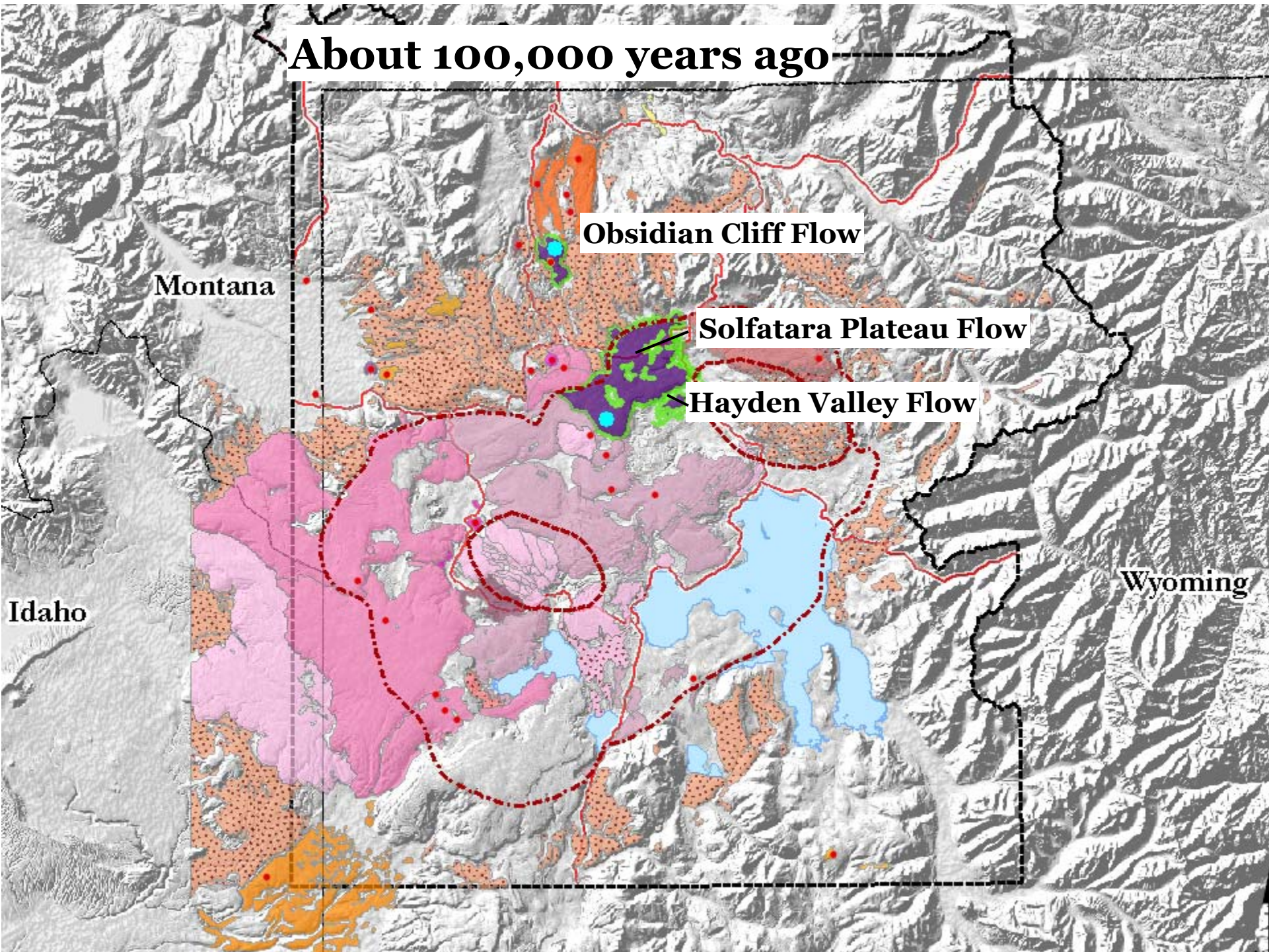
About 134,000 years ago



About 114,000 years ago



About 100,000 years ago



About 72,000 years ago

Crystal Spring Flow

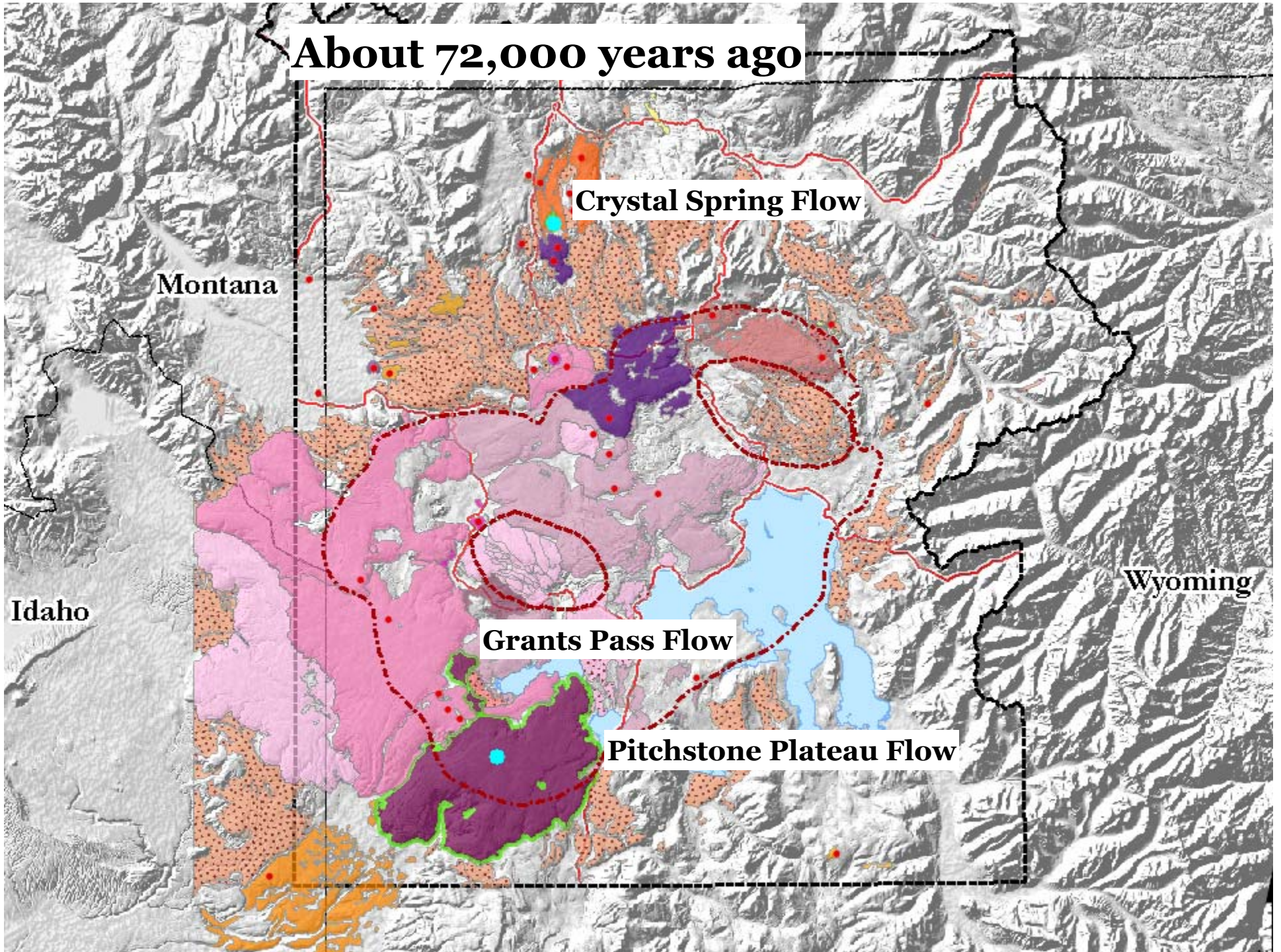
Montana

Idaho

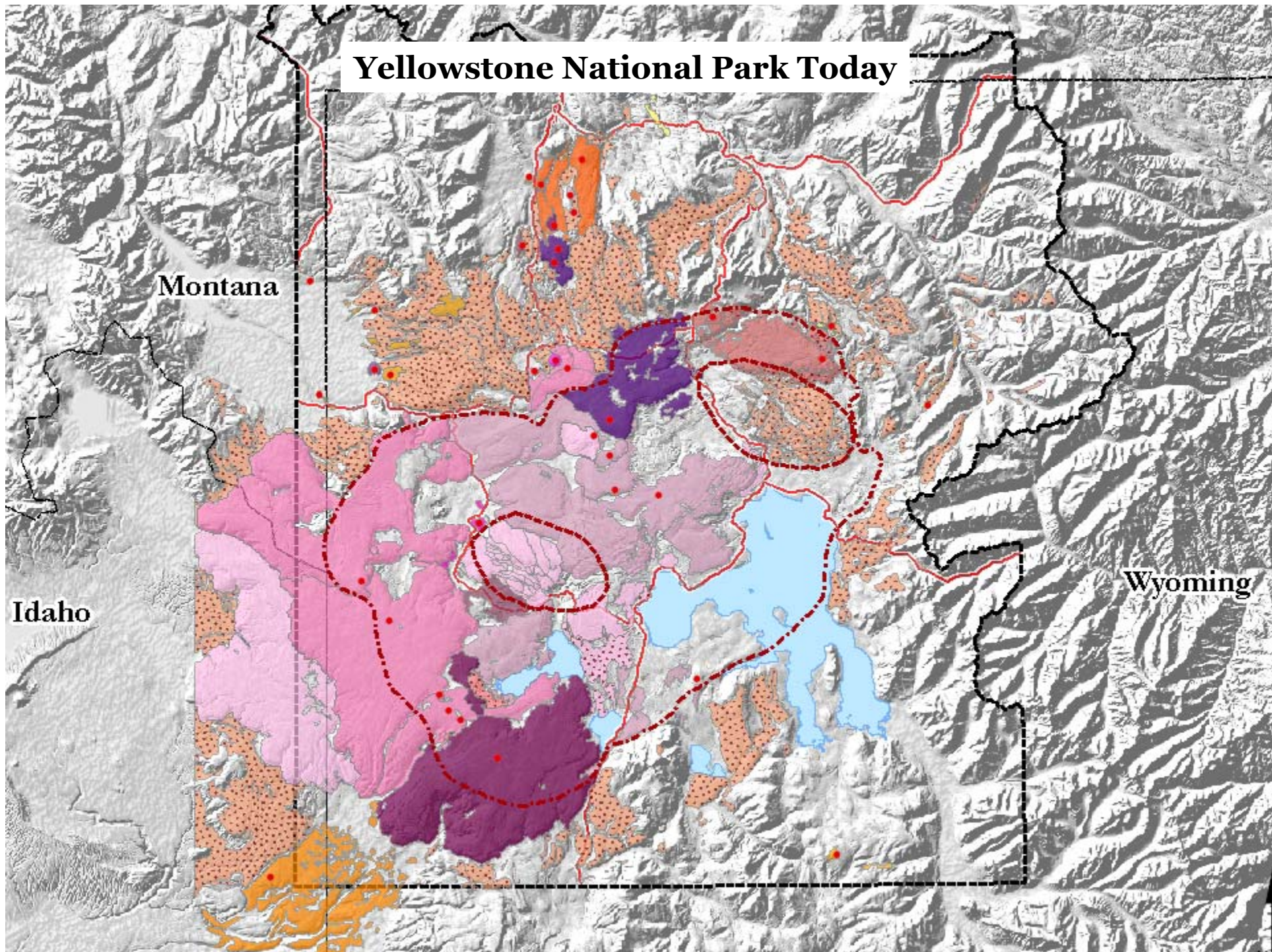
Wyoming

Grants Pass Flow

Pitchstone Plateau Flow



Yellowstone National Park Today





Sources:

Abedini, A.A., A.T. Calvert, S. Hurwitz, 2007, New $^{40}\text{Ar}/^{39}\text{Ar}$ age Determinations of Basalts From the Yellowstone Plateau Volcanic Field, *Eos Trans. AGU*, 88(52), Fall Meet. Suppl.

Christiansen, Robert L., 2001, The Quaternary and Pliocene Yellowstone Plateau Volcanic Field of Wyoming, Idaho, and Montana: U.S. Geological Survey Professional Paper 729-G, 145 p., 3 plates.

Christiansen, Robert L.; Jacob Lowenstern, Robert B. Smith, Henry Heasler, Lisa A Morgan, Manuel Nathenson, Larry G. Mastin, L.J. Patrick Muffler, and Joel E. Robinson, 2007, Preliminary Assessment of Volcanic and Hydrothermal Hazards in Yellowstone National Park and Vicinity: U.S. Geological Survey Open-file Report 2007-1071, 94 p.

Idaho Nastanski, Nicole, 2005, Petrogenesis of extracaldera rhyolites at Yellowstone volcanic field: Evidence for an evolving silicic magma system north of the Yellowstone Caldera: MS, University of Nevada, Las Vegas, 207 p; 1429720. ing

