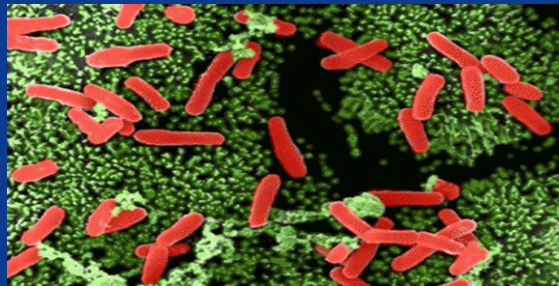


Laboratory Positive *Clostridium difficile*: BioSense 2007-2008



Stephen R. Benoit, MD, MPH

Nikolay Lipskiy, PhD, MBA

Roseanne English, BS

Jerome Tokars, MD, MPH

National Center for Public Health Informatics

Centers for Disease Control and Prevention

The findings and conclusions in this presentation are those of the author and do not necessarily represent the views of the Centers for Disease Control and Prevention

SAFER • HEALTHIER • PEOPLE™



Clostridium difficile Infection (CDI)



C. difficile

- Anaerobic, spore-forming bacillus
- Wide spectrum of disease

Simple diarrhea

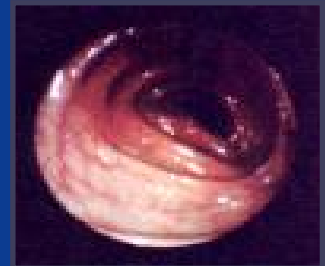


Pseudomembranous colitis
Toxic megacolon



Sepsis and death

- Transmission through contaminated environment & hands of healthcare personnel
- Risk factor: recent antimicrobial exposure



Healthy colon

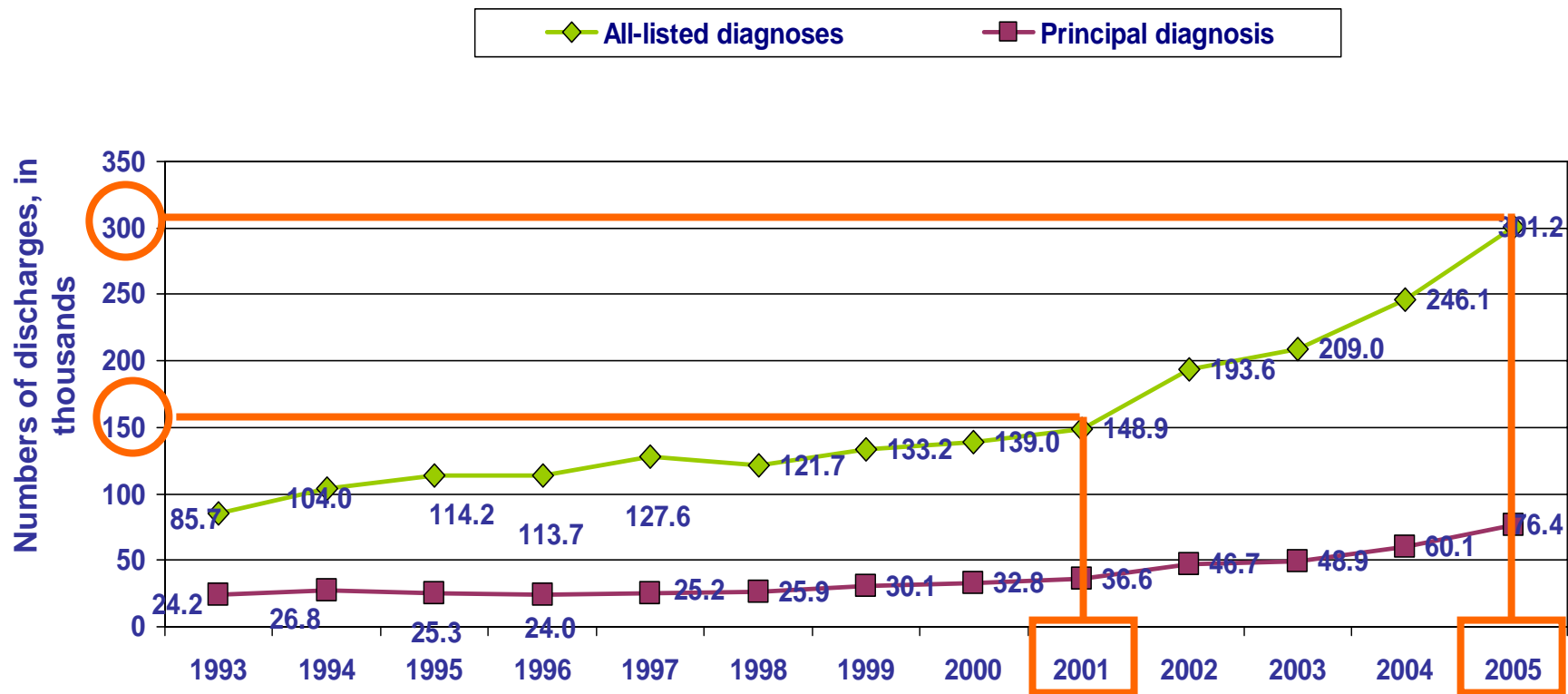


Pseudo-membranous
colitis



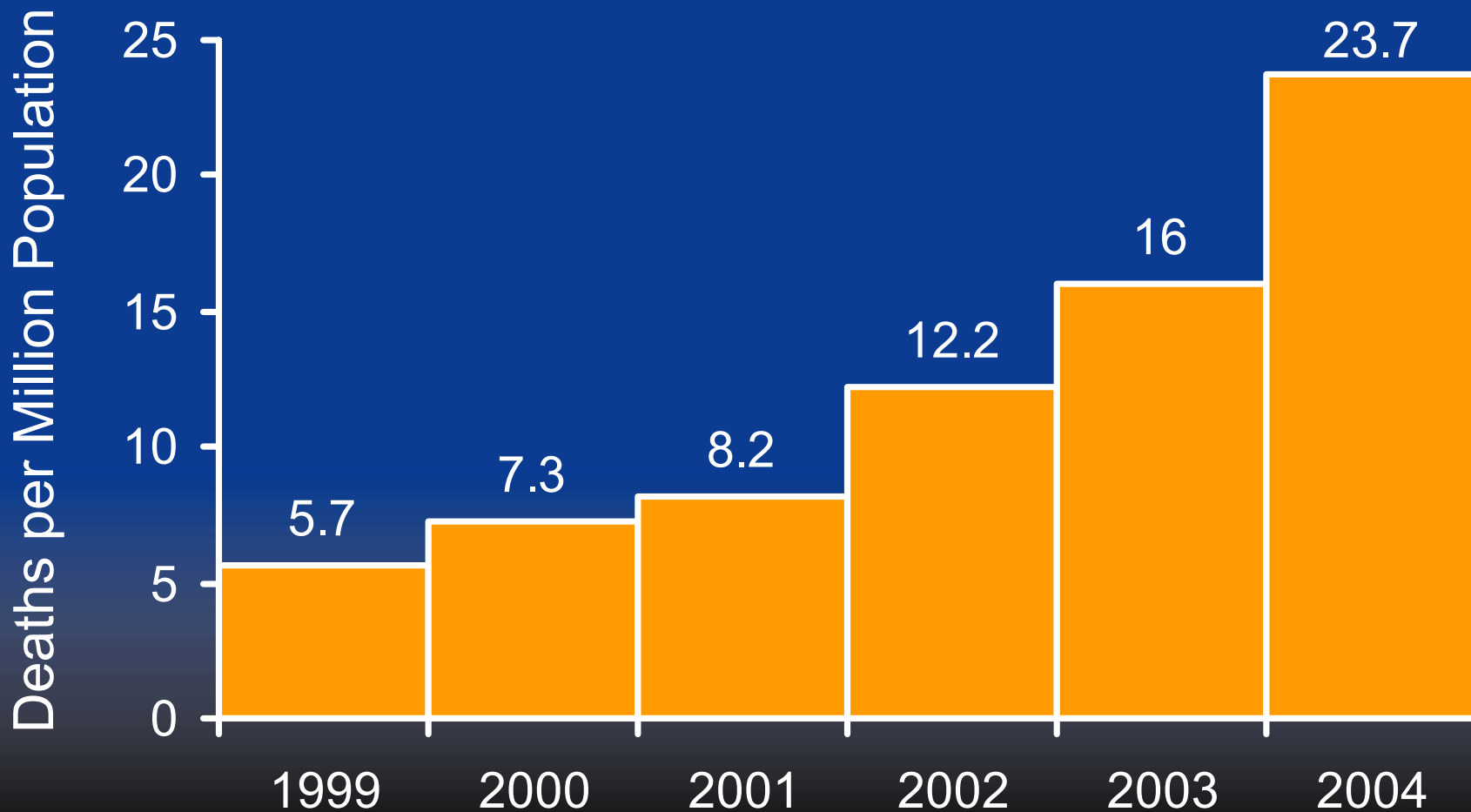
Changing Epidemiology of *Clostridium difficile*

Figure 1. Trends in hospital stays associated with *Clostridium difficile*-associated disease, 1993-2005



From Elixhauser A, *Clostridium difficile*-associated disease in U.S. Hospitals, 1993–2005. HCUP Statistical Brief #50. April 2008.

Clostridium difficile–related Mortality by Listing on Death Certificates, United States—1999-2004



Adapted from Redelings MD, *et al.* Emerg Infect Dis. 2007

C. difficile in Previously Low-Risk Populations

The logo for the Morbidity and Mortality Weekly Report (MMWR) features the letters 'MMWR' in a large, bold, white sans-serif font. The letters are set against a blue rectangular background that has a slight gradient and a drop shadow effect. A small 'TM' trademark symbol is located to the upper right of the 'R'.

Morbidity and Mortality Weekly Report

Weekly

December 2, 2005 / Vol. 54 / No. 47

**Severe *Clostridium difficile*-Associated Disease in Populations
Previously at Low Risk — Four States, 2005**

- 10 pregnant women
- 23 generally healthy persons in the community
- Cases *without* precedent antimicrobial use

Recommendations from Ad Hoc *C. difficile* Surveillance Working Group

- Hospitals should conduct surveillance for CDI
 - Track positive laboratory results (e.g., toxin assays)
 - Consider measures to track outcomes
 - Determine Healthcare vs. Community-associated disease if possible

INFECTION CONTROL AND HOSPITAL EPIDEMIOLOGY FEBRUARY 2007, VOL. 28, NO. 2

ORIGINAL ARTICLE

Recommendations for Surveillance of *Clostridium difficile*-Associated Disease

L. Clifford McDonald, MD; Bruno Coignard, MD, MSc; Erik Dubberke, MD; Xiaoyan Song, MD, MS;
Teresa Horan, MPH; Preeta K. Kuty, MD, MPH; the Ad Hoc *Clostridium difficile* Surveillance Working Group



BioSense



- Surveillance system designed for:
 - Disease detection
 - Monitoring
 - Real-time health situational awareness
- Data sources:
 - Non-federal hospitals: 569
 - Veteran's Administration facilities: 833
 - Department of Defense facilities: 355
- Data types:
 - Chief complaints, working and final diagnoses
 - Subset of hospitals: laboratory*, radiology, pharmacy data

* Focus of this study

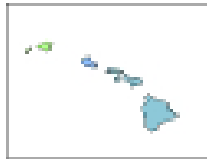
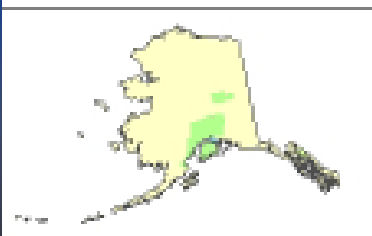
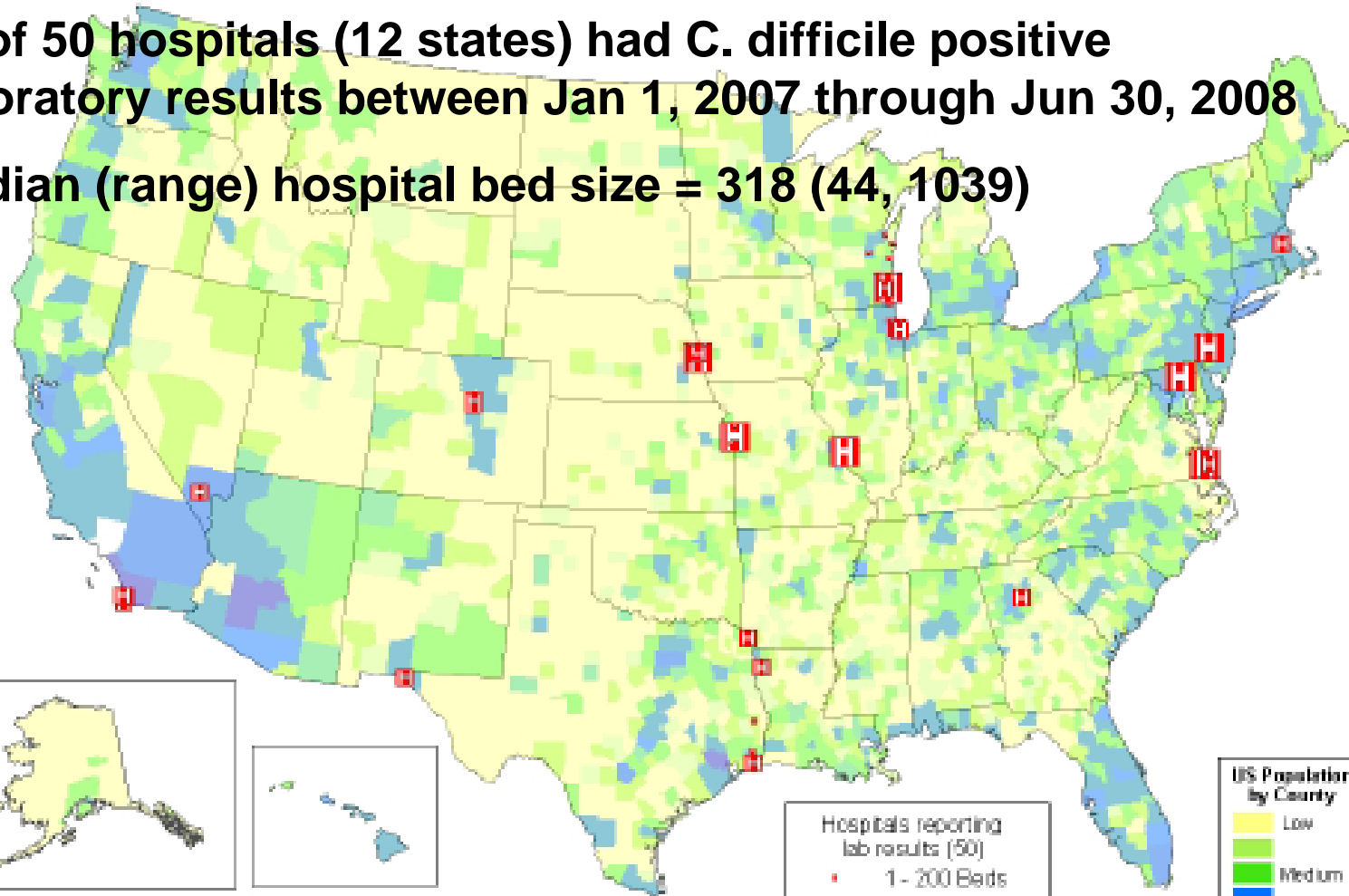


BioSense Facilities
reporting Laboratory Results
- August 2008 -



32 of 50 hospitals (12 states) had C. difficile positive laboratory results between Jan 1, 2007 through Jun 30, 2008

Median (range) hospital bed size = 318 (44, 1039)



Hospitals reporting lab results (50)

- 1 - 200 Beds
- 239 - 600 Beds
- 642 - 1039 Beds

US Population by County

- Low
- Medium
- High

*US Census 2004 estimate



Objectives

- Determine the feasibility of using BioSense laboratory data for surveillance on a disease of public health importance
- Apply surveillance definitions and calculate overall and facility rates of disease based on definitions created by the *C. difficile* Surveillance Working Group



C. difficile Definitions



	Laboratory collection	Healthcare facility (HCF) exposure from time of laboratory collection
Healthcare-onset	≥ 3 days after hospital admission	
Community-onset, HCF-associated	< 3 days or in outpatient setting	≤ 30 days
Community-associated	< 3 days or in outpatient setting	no HCF admission or ≥ 90 days
Indeterminate	< 3 days or in outpatient setting	≤ 90 but > 30 days



Methods

- Identified positive *C. difficile* toxin assays and cultures in laboratory data sent to BioSense from January 1, 2007 through June 30, 2008
- Searched for *C. difficile* in SNOMED-CT*-coded and text-based reports
- Merged laboratory data with Admission, Discharge, Transfer (ADT) data to determine healthcare setting, patient demographics, and previous healthcare exposures
- De-duplicated data; earliest report kept for each unique patient

*Systematized Nomenclature of Medicine

SNOMED-CT¹ Codes from PHIN VADS²

SNOMED-CT	CodeName
<u>120953000</u>	Clostridium difficile antibody
<u>423590009</u>	Clostridium difficile colitis
<u>96001009</u>	Clostridium difficile toxin B
<u>404907009</u>	Toxic megacolon due to Clostridium difficile
<u>186431008</u>	Clostridium difficile infection
<u>121963002</u>	Clostridium difficile antibody assay
<u>121897008</u>	Clostridium difficile detection
<u>5933001</u>	Clostridium difficile
<u>255823007</u>	Clostridium difficile enterotoxin A
<u>310541005</u>	Clostridium difficile toxin A detected
<u>122209009</u>	Clostridium difficile culture
<u>72415005</u>	Clostridium difficile assay
<u>118114008</u>	Clostridium difficile antigen assay
<u>122174009</u>	Clostridium difficile toxin A assay
<u>75332002</u>	Clostridium difficile toxin assay
<u>413047002</u>	Clostridium difficile toxin detection
<u>12671002</u>	Clostridium difficile toxin
<u>117963005</u>	Clostridium difficile toxin A AND B assay
<u>121964008</u>	Clostridium difficile toxin B assay

StdCode=5933001,	5933001	Clostridium difficile	SNOMED
StdCode=5933001,	5933001	Clostridium difficile	SNOMED
StdCode=5933001,	5933001	Clostridium difficile	SNOMED
StdCode=5933001,	5933001	Clostridium difficile	SNOMED
StdCode=5933001,	5933001	Clostridium difficile	SNOMED
StdCode=5933001,	5933001	Clostridium difficile	SNOMED
StdCode=5933001,	5933001	Clostridium difficile	SNOMED
StdCode=5933001,	5933001	Clostridium difficile	SNOMED
StdCode=5933001,	5933001	Clostridium difficile	SNOMED
StdCode=5933001,	5933001	Clostridium difficile	SNOMED
StdCode=5933001,	5933001	Clostridium difficile	SNOMED
StdCode=5933001,	5933001	Clostridium difficile	SNOMED
StdCode=5933001,	5933001	Clostridium difficile	SNOMED
StdCode=5933001,	5933001	Clostridium difficile	SNOMED
StdCode=5933001,	5933001	Clostridium difficile	SNOMED

¹Systematized Nomenclature of Medicine; ²Vocabulary Access and Distribution System

LOINC¹ Codes from PHIN VADS²

<u>Loinc Code</u>	<u>Name</u>	<u>Loinc Code</u>	<u>Name</u>
<u>20761-3</u>	C dif Stl Ql Aggl	<u>34468-9</u>	C dif Tox A+B Stl Ql EIA
<u>20762-1</u>	C dif Stl Ql Aerobe Cul	<u>34713-8</u>	C dif Tox A+B Stl Ql
<u>34712-0</u>	C dif Stl Ql	<u>6361-0</u>	C dif Tox A+B Ser EIA-aCnc
<u>563-7</u>	C dif XXX Ql Cult	<u>6362-8</u>	C dif Tox A+B Stl Ql CT Tiss Cult
<u>562-9</u>	C dif Stl Ql Cult	<u>6363-6</u>	C dif Tox A+B Stl EIA-aCnc
<u>31308-0</u>	C dif Ab Ser-aCnc	<u>6364-4</u>	C dif Tox A+B XXX EIA-aCnc
<u>9365-8</u>	C dif Ab Titr Ser	<u>33947-3</u>	C dif Tox Ab Titr Ser Nt
<u>26697-3</u>	C dif IgA Ser-aCnc	<u>43055-3</u>	C dif Tox Ab Titr Ser
<u>26702-1</u>	C dif IgG Ser-aCnc	<u>10895-1</u>	C dif Tox B Stl Ql
<u>26694-0</u>	C dif IgM Ser-aCnc	<u>46131-9</u>	C dif Tox B Stl Ql CT Tiss Cult
<u>13957-6</u>	C dif Tox A Stl Ql EIA	<u>6365-1</u>	C dif Tox B Stl EIA-aCnc
<u>6359-4</u>	C dif Tox A Stl EIA-aCnc	<u>6366-9</u>	C dif Tox B XXX EIA-aCnc
<u>6360-2</u>	C dif Tox A XXX EIA-aCnc		

¹Logical Observation Identifiers Names and Codes; ²Vocabulary Access and Distribution System



Text Reports



EIA positive for **C.difficile** toxin

POSITIVE FOR **C.DIFFICILE** TOXINS A AND/OR B CALLED TO, READ
BACK AND CONFIRMED BY KM 03/07/08 1330 BY CAM FINAL 03/07/2008

C. diff Toxin B SPECIMEN DESCRIPTION STOOL COMMENTS NONE TEST
RESULT POSITIVE FOR CLOSTRIDIUM DIFFICILE TOXIN B REPORT
STATUS FINAL 03192007

Soft stool:Positive for **Clostridium difficile** toxin

***** MICROBIOLOGY ***** C. DIFFICILE TOXIN A & B EIA @ ACC#:
COLL D/T:12/31/07 1800 ----- FINAL REPORT ----- 02JAN08
CLOSTRIDIUM DIFFICILE TOXIN A & B POSITIVE .END OF REPORT

SP 2020 01 RAPID MICROBIOLOGY TESTS ----- PROCEDURE:
CLOSTRIDIUM DIFF TOXIN A/B @ COLLECTED: 03/18/08 0945
SOURCE: STOOL RECEIVED: 03/18/08 1552 STARTED: 03/18/08 1603 ---
----FINAL REPORT----- FINAL REPORT 03/18/08
1954 POSITIVE for **C. difficile** Toxin A and/or Toxin B @ = CLOS DIFF TXN A

Text Reports - Negations



C.difficile toxins are **absent** or below the limit of detection

NEGATIVE FOR C.DIFFICILE TOXINS A AND/OR B FINAL 05/24/2008

***** MICROBIOLOGY ***** C. DIFFICILE TOXIN A & B EIA @ ACC#:02-
xxxxx COLL D/T:06/18/08 0630 ----- FINAL REPORT -----
----- 18JUN08 CLOSTRIDIUM DIFFICILE TOXIN A & B **NOT DETECTED**

Clostridium difficile toxin A and/or B **not present**.

No Clostridium difficile toxin detected.

C. diff Toxin EIA SPECIMEN DESCRIPTION STOOL COMMENTS NONE
TEST RESULT **CANCELLED** REQUEST CANCELLED. THIS TEST
EXCEEDED REPLICIA LIMIT. SPECIMEN WILL BE HELD 24 HOURS. CALL
LAB AT xxx-xxx-xxxx IF NECESSARY. REPORT STATUS FINAL

***** MICROBIOLOGY ***** C. DIFFICILE TOXIN A & B EIA @ ACC#:xx-
xxxxxx COLL D/T:01/05/07 1040 ----- FINAL REPORT -----
----- 06JAN07 **SPECIMEN REJECTED**. Testing for C. difficile toxins will
only be performed on one specimen within a 24 hour timeframe. Patient
account has been credited for this test.



Results: Characteristics of Patients with *C. difficile* Laboratory Positive Tests (Jan 1, 2007 – Jun 30, 2008)

Unique patients with laboratory positive tests	N = 4,203
Median (range) age in years	67 (<1, 101)
Females	54%
Laboratory collection setting	
Inpatient	88%
Outpatient	8%
Emergency department	4%



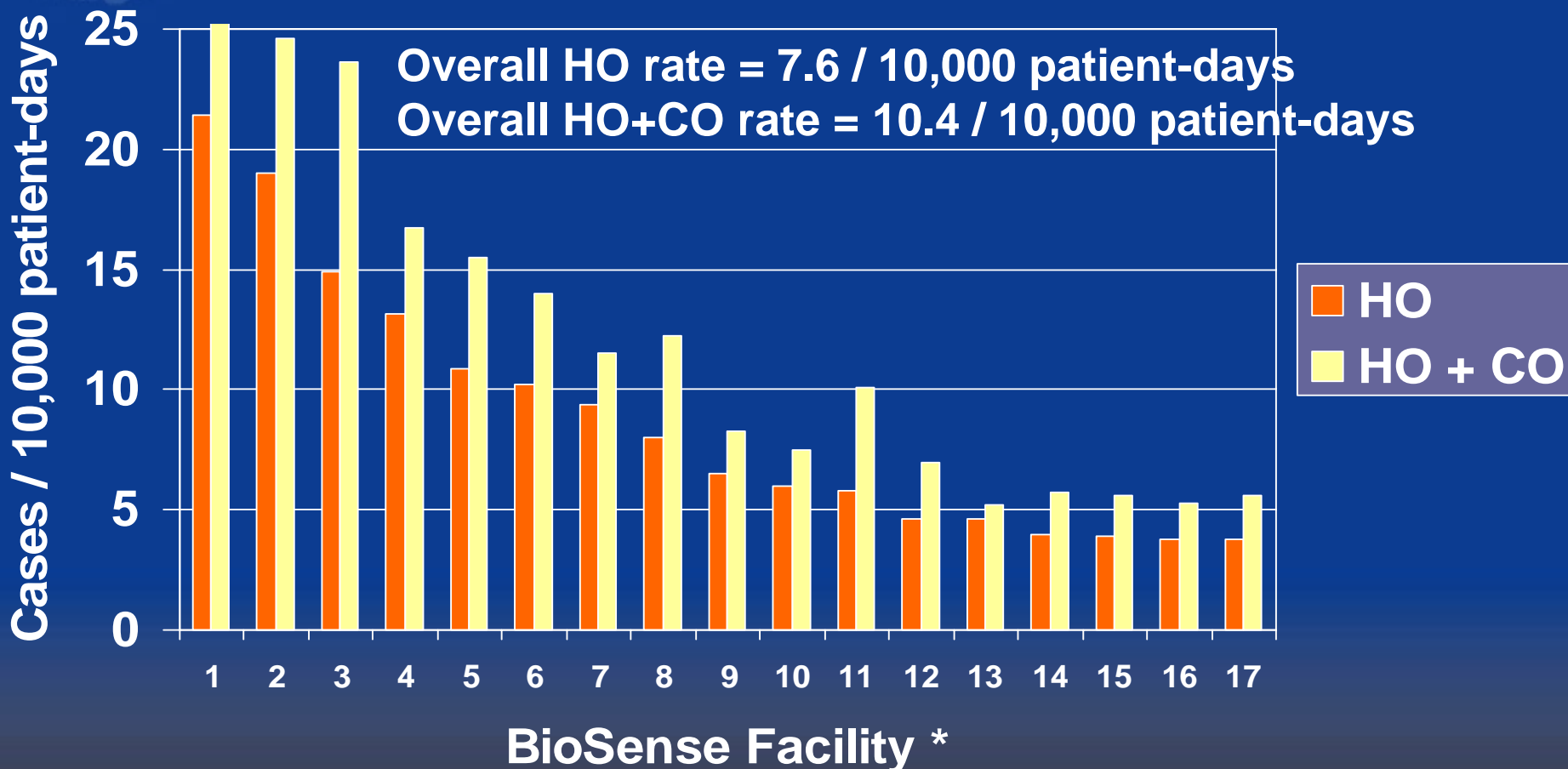
C. difficile Types (N = 4,203)



	n (%)
Healthcare-onset	1,905 (45%)
Community-onset, HCF-associated	704 (17%)
Community-associated*	1,242 (30%)
Indeterminate	286 (7%)
Community-onset, unknown exposure	66 (1%)

* Likely an overestimate since healthcare exposures in other facilities are not captured

C. difficile Rates by Facility

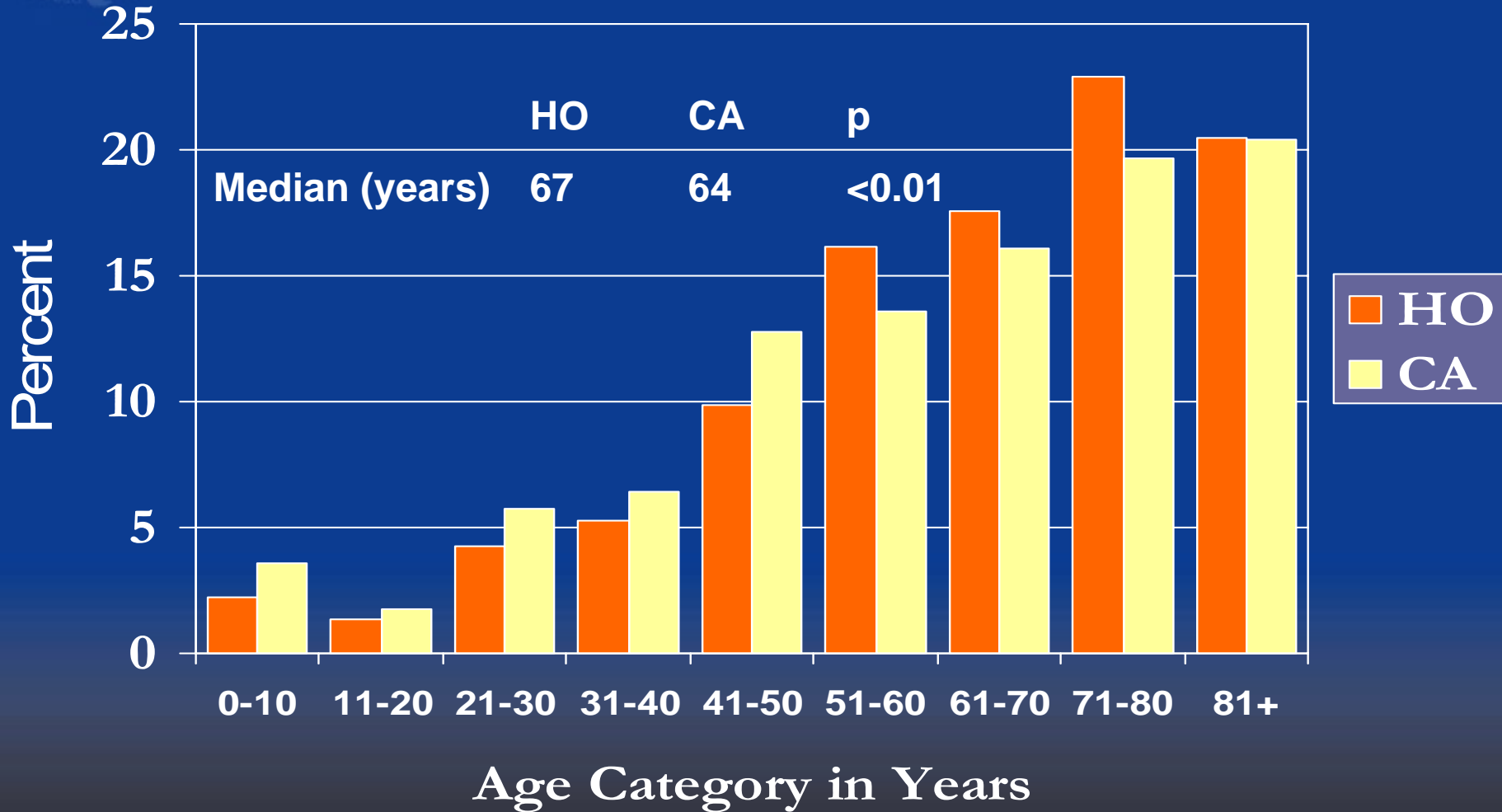


HO = Healthcare-onset: laboratory collection date ≥ 3 days after hospital admission

CO = Community-onset, HCF-associated: laboratory collection date < 3 days after hospital admission or in outpatient setting AND hospital admission ≤ 30 days from time of laboratory collection

* 17 facilities with ≥ 20 laboratory positive *C. difficile* reports

Age Distribution of Healthcare-onset and Community-associated *C. difficile* Disease



HO = Healthcare-onset: laboratory collection date ≥ 3 days after hospital admission

CO = Community-associated: laboratory collection date < 3 days after hospital admission or collection in outpatient setting AND no HCF admission within 90 days from time of laboratory collection

Comparing BioSense to Other Studies

	BioSense	Kutty et al. 6 hospitals in N.C.	Dubberke et al 5 hospitals nationwide
Healthcare-onset			
Proportion	45%	42%	60%
Rate/10,000 pt-days	7.6		11.4
Facility rate range	3.8 – 21.4	1.4 – 16.8	4.1 – 16.8
Community-associated			
Proportion	30%	20%	

Kutty et al, *Infect Control Hosp Epidemiol* 2007

Dubberke et al, SHEA 2008, Abstract #377



Limitations

- Assumed previous healthcare exposures were at the same facility
- No formal validation of the data
- 4% of BioSense visits were missing admission/discharge dates which affects rate calculations



Discussion

- Identified 4,203 laboratory positive *Clostridium difficile* records from 32 laboratories in 12 states
- Proportion of healthcare-onset cases and overall rates and facility rate ranges were similar to other studies
- Automated data from BioSense appears to be a useful tool in tracking *C. difficile* infections



Next Steps

- Incorporate other data types in the analysis (e.g., pharmacy data)
- Verify data with sample chart review
- Continue to work with subject matter experts and hospital infection control practitioners to maximize utility of data

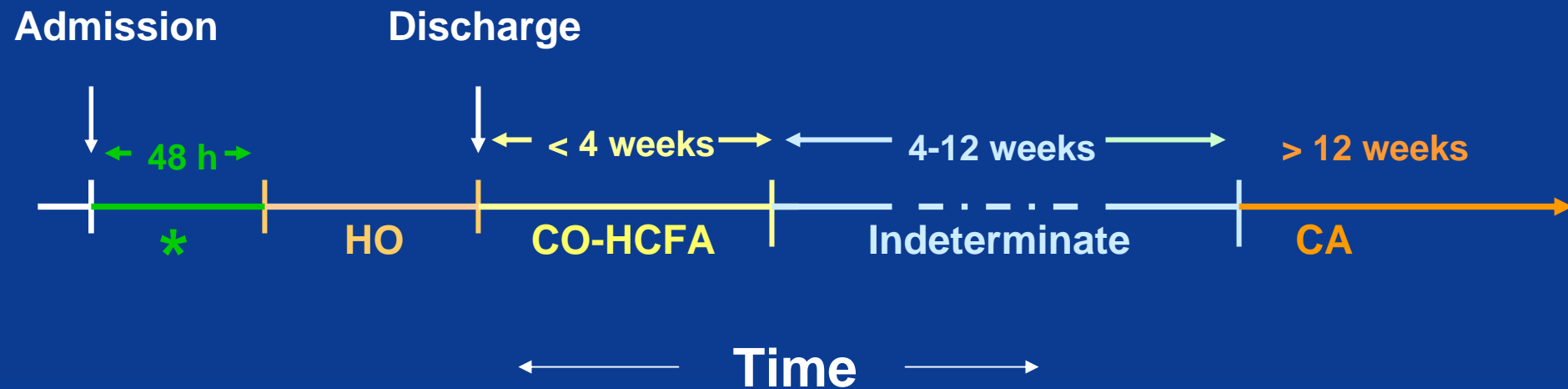


Acknowledgements



- L. Clifford McDonald, MD
- Peter Hicks

Recommendations for Surveillance of *Clostridium difficile* Infection



HO: Healthcare-onset

CO-HCFA: Community-Onset Healthcare facility-associated

CA: Community-Associated

* Depending on whether patient was discharged within previous 4 weeks, CO-HCFA vs. CA