

SYSTEM DATA

SYSTEM PROFILE as of September 30, 2005

Project	Boulder Canyon	Central Arizona	Central Valley	Falcon-Amistad	Loveland Area Projects	Pacific NW-SW Intertie
Transmission lines						
Circuit miles	53	0 ¹	865	0	3,356	951
Circuit kilometers	86	0 ¹	1,391	0	5,399	1,530
Land						
Acres	1,168	0	11,768	0	36,346	23,116
Hectares	473	0	4,764	0	14,715	9,359
Facilities						
Number of substations	4	6	20	0	72	9
Number of powerplants	1	1	11	2	19.5	0
Revenues						
Total power revenues - \$	57,707,164	94,085,498	220,565,521	5,371,985	83,091,760	0
Firm power revenues - \$	57,707,164	94,085,498	191,788,371	0	48,720,390	0
Nonfirm power revenues - \$	0	0	9,877,150	5,371,985	16,195,762	0
Project use revenues - \$	0	0	18,900,000	0	27,722	0
Interproject revenues - \$	0	0	0	0	18,147,886	0
Transmission revenues - \$	0	25,508,944	14,978,609	0	32,993,424	28,686,822
Number of customers ²	15	1	136	2	70	0

Project	Parker-Davis	Pick-Sloan Missouri Basin — Eastern Division	Provo River	Salt Lake City Area Integrated Projects	Washoe	Total Western
Transmission lines¹						
Circuit miles	1,541	7,919	0	2,322	0	17006
Circuit kilometers	2,479	12,741	0	3,736	0	27,362
Land						
Acres	21,483	91,917	0	35,591	0	221,389
Hectares	8,698	37,213	0	14,409	0	89,632
Facilities						
Number of substations	46	104	0	31	0	292
Number of powerplants	2	7.5	1	11	1	57
Revenues						
Total power revenues - \$	7,487,627	227,173,487	306,049	138,936,979	134,576	834,860,646
Firm power revenues - \$	6,398,665	161,619,319	0	109,349,837	0	669,669,244
Nonfirm power revenues - \$	0	65,443,597	306,049	38,519,551	134,576	135,848,670
Project use revenues - \$	1,088,962	99,891	0	1,862,180	0	21,978,755
Interproject revenues - \$	0	10,680	0	-10,794,589	0	7,363,977
Transmission revenues - \$	34,139,427	31,604,083	0	19,290,443	0	187,201,752
Number of customers ²	26	360	2	208	1	751

¹ Western maintains 275 circuit miles of transmission line owned by the Bureau of Reclamation under the Central Arizona Project located in California, Nevada, and Arizona. Within that 275 circuit miles, the 118.9 mile Parker-Liberty No. 1 230-KV Transmission Line is maintained by Western as a Parker-Davis Project expense and Parker-Davis is entitled to 165 MW of capacity in the line.

² Double counting of customers between projects occurs when more than one project sells power to the same customer. Total count of 751 includes project use and interproject customers. However, double counts are eliminated in the Westernwide total.

FACILITIES

Buildings, Communications Summary

Project	Number of Buildings	Number of Communications Sites	Fee Area		Withdrawal Area ¹		Easement Area	
			Acres	Hectares	Acres	Hectares	Acres	Hectares
Boulder Canyon	0	3	0	0	0	0	0	0
Central Arizona	2	6 ²	0	0	0	0	0	0
Central Valley	39	19	0	0	0	0	0	0
Loveland Area Projects	191	107	57	23	0	0	34	14
Pacific NW-SW Intertie	14	10	0	0	0	0	0	0
Parker-Davis	58	52	0	0	0	0	7	3
Pick-Sloan Missouri Basin— Eastern Division	185	177	175	71	0	0	185	75
Salt Lake City Area Integrated Projects	72	64	46	18	0	0	1	0
Western total	561	438	278	113	0	0	228	92

¹Areas set aside by the Bureau of Land Management for Western transmission and substation use.

²Western maintains an additional 7 communication sites owned by the Bureau of Reclamation.

Substations Summary

Project	Number of Substations	Transformers		Fee Area		Withdrawal Area ¹		Easement Area	
		Number	Capacity (MVA)	Acres	Hectares	Acres	Hectares	Acres	Hectares
Boulder Canyon	4	1	125,000	0	0	0	0	0	0.00
Central Arizona ^{1,2}	6 ¹	0 ²	0 ²	0	0	0	0	0	0
Central Valley	20	18	1,312,420	362	147	0	0	0	0
Loveland Area Projects	72	67	1,812,700	441	179	0	0	139	56
Pacific NW-SW Intertie	9	9	5,831,330	316	128	4,403	1,782	86	35
Parker-Davis	46	27	1,652,500	323	131	115	47	63	26
Pick-Sloan Missouri Basin— Eastern Division	104	129	9,134,090	1,673	677	23	9	6	2
Salt Lake City Area Integrated Projects	31	34	5,804,640	748	303	128	52	50	20
Western total	292	285	25,672,680	3,863	1,564	4,669	1,889	344	139

¹Western maintains an additional 6 substations owned by the Bureau of Reclamation.

²Western maintains 2 power transformers (152.3 MVA total capacity) owned by the Bureau of Reclamation.

TRANSMISSION LINES (in circuit miles)

State	500-kV		345-kV		230-kV		161-kV	
	Miles	Kilometers	Miles	Kilometers	Miles	Kilometers	Miles	Kilometers
Arizona ¹	231.90	373.13	703.09	1,131.27	902.22	1,451.67	154.70	248.91
California ¹	372.40	599.19	0	0	844.09	1,358.14	203.46	327.37
Colorado	0	0	315.75	508.04	702.35	1,130.08	0	0
Iowa	0	0	20.33	32.71	164.52	264.71	229.13	368.67
Minnesota	0	0	0	0	247.33	397.95	0	0
Missouri	0	0	0	0	0	0	17.95	28.88
Montana	0	0	0	0	560.85	902.41	283.28	455.80
Nebraska	0	0	136.99	220.42	125.79	202.40	0	0
Nevada ¹	24.00	38.62	11.10	17.86	152.75	245.77	0	0
New Mexico	0	0	22.14	35.62	58.17	93.60	0	0
North Dakota	0	0	40.74	65.55	1,034.71	1,664.85	0	0
South Dakota	0	0	270.51	435.25	1,766.12	2,841.69	0	0
Utah	0	0	16.98	27.32	0	0	0	0
Wyoming	0	0	36.40	58.57	409.41	658.74	0	0
Total	628.30	1,010.93	1,574.03	2,532.61	6,968.31	11,212.01	888.52	1,429.63

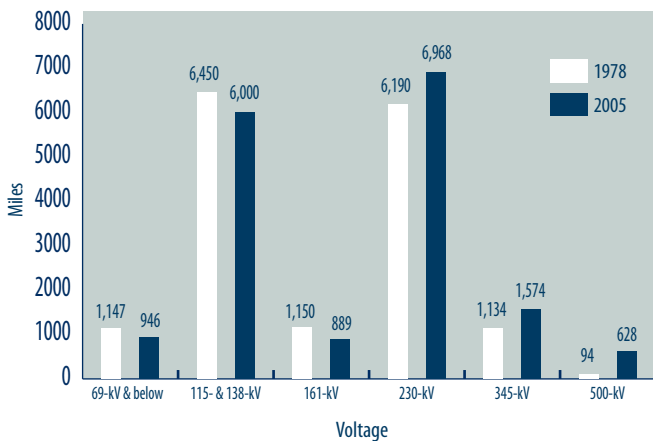
¹ Western maintains an additional 275 circuit miles of transmission line owned by the Bureau of Reclamation under the Central Arizona Project, located in California, Nevada and Arizona.

State	138-kV		115-kV		69-kV & below		Total Western	
	Miles	Kilometers	Miles	Kilometers	Miles	Kilometers	Miles	Kilometers
Arizona ¹	0	0	305.57	491.66	123.30	198.39	2,420.78	3,895.04
California ¹	0	0	8.75	14.08	49.90	80.29	1,478.60	2,379.07
Colorado	211.53	340.35	791.37	1,273.31	99.43	159.98	2,120.43	3,411.77
Iowa	0	0	0	0	0	0	413.98	666.09
Minnesota	0	0	14.99	24.12	0	0	262.32	422.07
Missouri	0	0	0	0	0	0	17.95	28.88
Montana	0	0	598.44	962.89	73.86	118.84	1,516.43	2,439.94
Nebraska	0	0	417.22	671.31	69.44	111.73	749.44	1,205.85
Nevada ¹	0	0	0	0	3.40	5.47	191.25	307.72
New Mexico	0	0	0	0	2.63	4.23	82.94	133.45
North Dakota	0	0	884.96	1,423.90	151.76	244.18	2,112.17	3,398.48
South Dakota	0	0	1,343.25	2,161.29	7.06	11.36	3,386.94	5,449.59
Utah	118.66	190.92	0	0	0.32	0.51	135.96	218.76
Wyoming	0	0	1,305.73	2,100.92	364.86	587.06	2,116.40	3,405.29
Total	330.19	531.28	5,670.28	9,123.48	945.96	1,522.05	17,005.59	27,361.99

¹ Western maintains 275 circuit miles of transmission line owned by the Bureau of Reclamation under the Central Arizona Project located in California, Nevada, and Arizona. Within that 275 circuit miles, the 118.9 mile Parker-Liberty No. 1 230-kV Transmission Line is maintained by Western as a Parker-Davis Project expense and Parker-Davis is entitled to 165 MW of capacity in the line.

Transmission Lines in Service

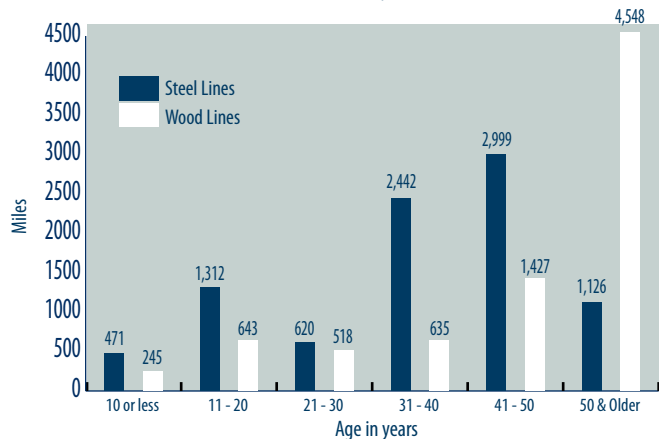
as of Oct. 1, 2005



Total miles of lines
1978 - 16,165 miles
2005 - 17,006 miles

Transmission Line Age

as of Oct. 1, 2005



Service life:

40 years for wood pole lines, 100 years for structures and
50 years for conductor insulator assemblies on steel lines.

This graph includes only wood and steel line structures.

Western owns 20 miles of concrete lines that do not appear in this graph.

RESOURCES

Energy Resources and Disposition

	GWh	
	FY 2005	FY 2004
Energy resources		
Net generation	25,195	28,315
Interchange		
Operating Energy Account deferred	333	230
Received	477	1,127
Delivered	356	632
Net	454	725
Purchases		
NonWestern	11,517	12,897
Western	159	269
Total purchases	11,676	13,166
Total energy resources	37,325	42,206

	GWh	
	FY 2005	FY 2004
Energy disposition		
Sales of electric energy		
Western sales	33,270	37,572
Project use sales	1,995	1,678
Total energy sales	35,265	39,250
Other		
Interproject sales	167	376
Other deliveries/losses ¹	379	810
Total other	546	1,186
Total energy delivered²	35,811	40,436
System and contractual losses	1,504	1,770
Total energy disposition	37,325	42,206

¹ Salt Lake City Area Integrated Projects: Operating Energy Account withdrawal.

² Boulder Canyon: Energy delivered does not match energy sales, which are billed on Master Schedule (estimated) deliveries not actuals.

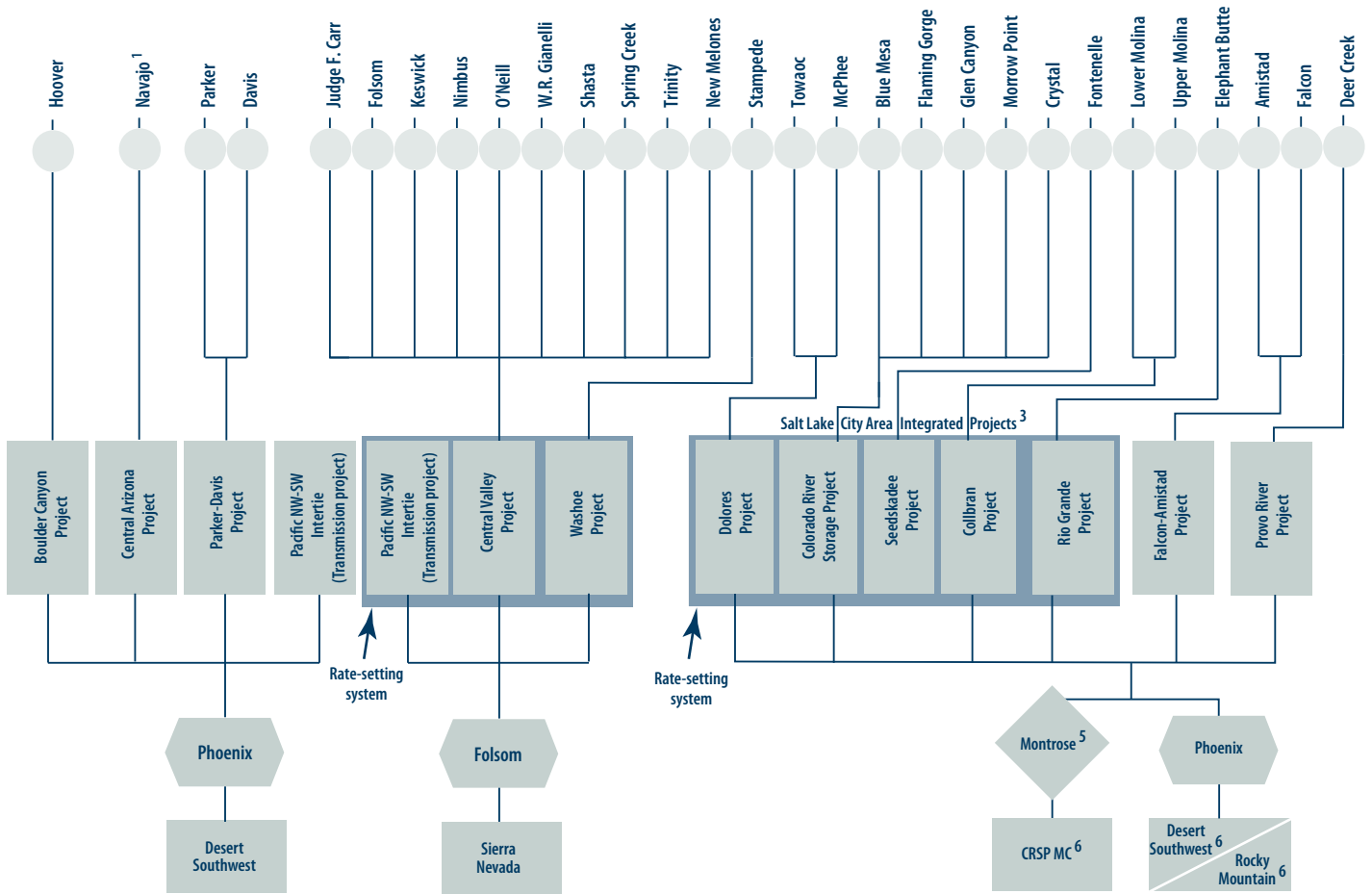
Capability and Net Generation

Project	Number of units	Installed capability FY 2005 (MW)	Actual operating capability (MW)		Net generation (GWh)	
			July 1, 2005	July 1, 2004	FY 2005	FY 2004
			Boulder Canyon	19	2,079	1,840
Central Arizona	3	547	547	547	4,225	4,388
Central Valley	39	1,995	1,137	1,837	4,310	5,438
Falcon-Amistad	5	98	98	98	152	9
Loveland Area Projects	39	830	763	693	1,694	1,631
Parker-Davis	9	315	309	309	1,166	1,397
Pick-Sloan Missouri Basin Program-Eastern Division	41	2,610	2,272	2,136	6,024	7,379
Provo River	2	5	5	5	21	14
Salt Lake City Area/Integrated Projects	24	1,811	1,811	1,800	4,340	4,023
Washoe	1	4	3	4	8	10
Totals	182	10,293	8,785	9,159	25,195	28,314

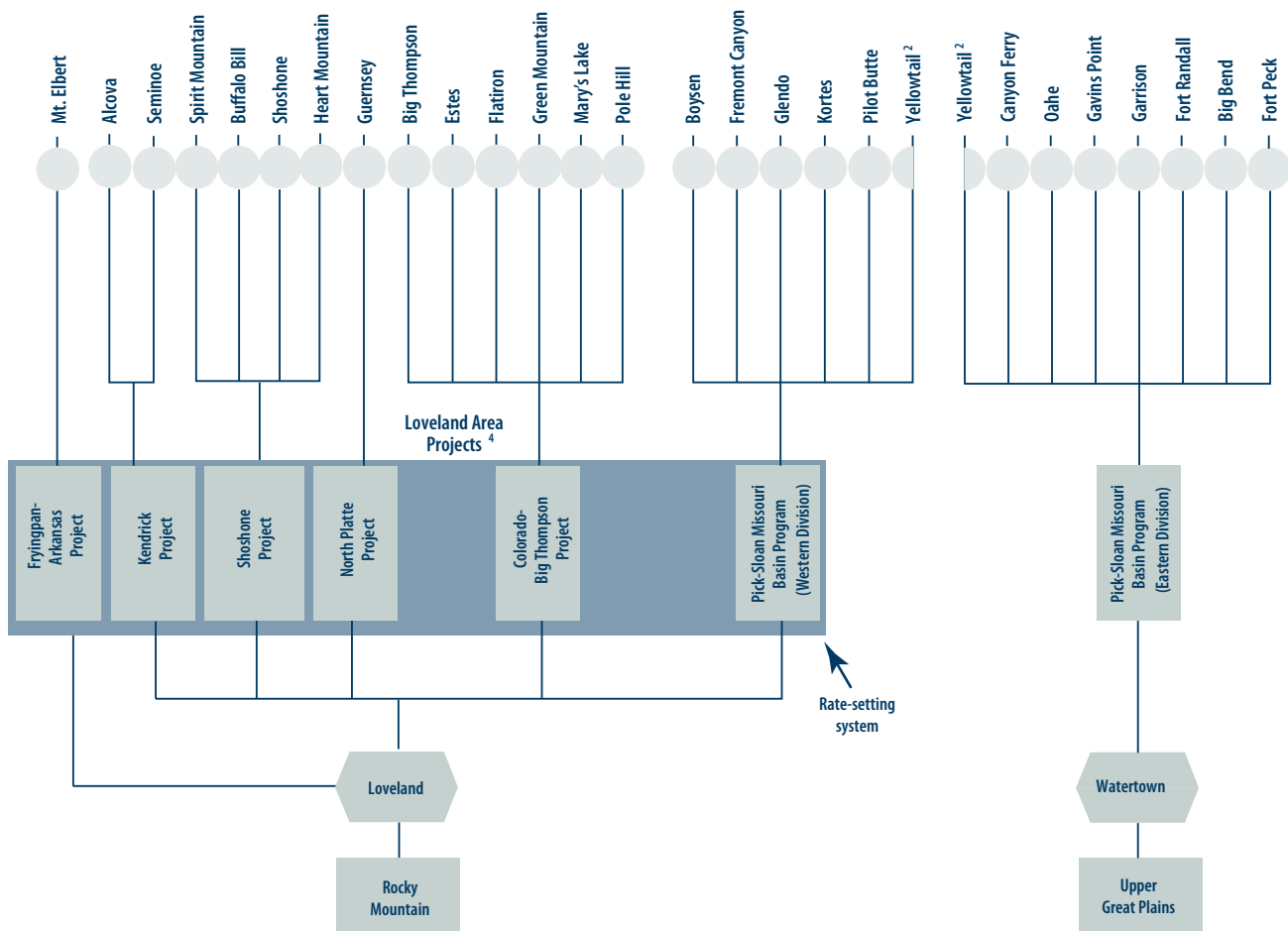
Capability and Net Generation by State

State	Number of units	Installed capability FY 2005 (MW)	Actual operating capability (MW)		Net generation (GWh)	
			July 1, 2005	July 1, 2004	FY 2005	FY 2004
			Arizona	26	3,145	3,026
California	44	2,059	1,194	1,895	4,516	5,680
Colorado	22	734	700	617	1,398	1,330
Montana	12	485	507	435	1,325	1,300
North Dakota	5	518	389	315	1,324	1,545
Nevada	9	1,039	920	866	1,628	2,010
New Mexico	3	28	28	28	38	28
South Dakota	26	1,732	1,508	1,510	3,629	4,693
Texas	5	98	98	98	152	9
Utah	5	157	157	157	365	248
Wyoming	25	298	259	276	789	583
Totals	182	10,293	8,785	9,159	25,195	28,314

POWER MARKETING SYSTEM



-  Power resources
-  Project or power system
-  Dispatch center
-  Billing/Marketing office
-  Rate-setting system
-  CRSP Energy Marketing and Management Office



¹ Coal-fired generation.

² Generation from units 1 and 2 is marketed by the Rocky Mountain Region; generation from units 3 and 4 by the Upper Great Plains Region. Yellowtail is controlled by Rocky Mountain.

³ These resources are integrated for marketing and operation purposes.

⁴ These resources are integrated for marketing, operation and repayment purposes.

⁵ Power marketed from Salt Lake City Area/Integrated Project resources and Loveland Area Projects.

⁶ Billing for Salt Lake City Area/Integrated Projects carried out by DSW and RM.

POWERPLANTS As of September 30, 2005

Project/state/plant name	Operating agency	River	Initial in-service date	Existing number of units	Installed capability ¹ FY 2005 (MW)	Actual operating capability (MW)		Net generation (GWh) ²	
						7/1/05	7/1/04	FY 2005	FY 2004
Boulder Canyon									
Arizona-Nevada									
Hoover	Reclamation	Colorado	Sep 36	19	2,079 ³	1,840	1,731	3,255	4,021
Boulder Canyon Total				19	2,079	1,840	1,731	3,255	4,021
Central Arizona									
Arizona									
Navajo	SRP	N/A ⁴	May 74	3	547 ⁵	547	547	4,225	4,388
Central Arizona Total				3	547	547	547	4,225	4,388
Central Valley									
California									
J.F. Carr	Reclamation	Clear Creek Tunnel	May 63	2	154	70	154	220	493
Folsom	Reclamation	American	May 55	3	199	106	199	691	491
Keswick	Reclamation	Sacramento	Oct 49	3	117	80	117	383	469
New Melones	Reclamation	Stanislaus	Jun 79	2	300	160	300	323	341
Nimbus	Reclamation	American	May 55	2	14	10	14	68	55
O'Neill ²	Reclamation	San Luis Creek	Dec 67	6	25 ⁶	0	25	28	6
Shasta	Reclamation	Sacramento	Jun 44	7	663 ¹²	530	640	1,806	2,207
Spring Creek	Reclamation	Spring Creek Tunnel	Feb 64	2	180	71	180	315	581
Trinity	Reclamation	Trinity	Feb 64	3	140	110	140	384	593
Lewiston	Reclamation	Trinity	Feb 64	1	0.35 ⁸	0	0	2	3
W.R. Gianelli ³	CDWR	San Luis Creek	Mar 68	8	202 ¹³	0	68	117	199
Central Valley Total				39	1,995	1,137	1,837	4,310	5,438
Falcon-Amistad									
Texas									
Amistad	IBWC	Rio Grande	Jun 83	2	66 ⁸	66	66	91	(1)
Falcon	IBWC	Rio Grande	Oct 54	3	32 ⁸	32	32	61	10
Falcon-Amistad Total				5	98	98	98	152	9
Loveland Area Projects									
Colorado									
Big Thompson	Reclamation	Trans-Mtn. Div.	Apr 59	1	5	4	4	8	10
Estes	Reclamation	Trans-Mtn. Div.	Sep 50	3	45	45	45	70	107
Flatiron ⁶	Reclamation	Trans-Mtn. Div.	Jan 54	3	95 ¹¹	95	95	187	227
Green Mountain	Reclamation	Blue	May 43	2	26	0	13	21	27
Mary's Lake	Reclamation	Trans-Mtn. Div.	May 51	1	8	0	8	18	38
Mount Elbert ⁶	Reclamation	Arkansas	Oct 81	2	200	206	106	263	344
Pole Hill	Reclamation	Trans-Mtn. Div.	Jan 54	1	38	32	32	150	179
Montana									
Yellowtail ¹⁰	Reclamation	Big Horn	Aug 66	2	125	132	124	255	160
Wyoming									
Alcova	Reclamation	North Platte	Jul 55	2	41	39	39	89	69
Boysen	Reclamation	Big Horn	Aug 52	2	15	15	15	54	29
Buffalo Bill	Reclamation	Shoshone	May 95	3	18	18	12	56	47
Fremont Canyon	Reclamation	North Platte	Dec 60	2	67	33	67	175	143
Glendo	Reclamation	North Platte	Dec 58	2	38	38	38	56	46
Guernsey	Reclamation	North Platte	Jul 99	2	6	6	6	12	10
Heart Mountain	Reclamation	Shoshone	Dec 48	1	5	5	5	7	9
Kortes	Reclamation	North Platte	Jun 50	3	36	36	24	125	83
Pilot Butte	Reclamation	Wind	Jan 99	2	2	-	1	4	4
Seminole	Reclamation	North Platte	Aug 39	3	52	51	51	109	63
Shoshone	Reclamation	Shoshone	May 95	1	3	3	3	21	18
Spirit Mountain	Reclamation	Shoshone	May 95	1	5	5	5	14	17
Loveland Area Projects Total				39	830	763	693	1,694	1,631
Parker-Davis									
Arizona									
Davis	Reclamation	Colorado	Jan 51	5	255	255	255	967	1,169
California									
Parker	Reclamation	Colorado	Dec 42	4	60 ⁹	54	54	198	228
Parker-Davis Total				9	315	309	309	1,166	1,397

Project/state/plant name	Operating agency	River	Initial in-service date	Existing number of units	Installed capability ¹ FY 2005 (MW)	Actual operating capability (MW)		Net generation (GWh) ²	
						7/1/05	7/1/04	FY 2005	FY 2004
Pick-Sloan—Eastern Division									
Montana									
Canyon Ferry	Reclamation	Missouri	Dec 53	3	50	60	60	277	237
Fort Peck	Corps	Missouri	Jul 43	5	185	171	133	538	744
Yellowtail ¹⁰	Reclamation	Big Horn	Aug 66	2	125 ¹⁰	144	118	255	160
North Dakota									
Garrison	Corps	Missouri	Jan 56	5	518	389	315	1,324	1,545
South Dakota									
Big Bend	Corps	Missouri	Oct 64	8	494	482	493	594	772
Fort Randall	Corps	Missouri	Mar 54	8	320	361	355	1,119	1,475
Gavins Point	Corps	Missouri	Sep 56	3	132	109	109	576	691
Oahe	Corps	Missouri	Apr 62	7	786	556	553	1,340	1,755
Pick-Sloan Eastern Division Total				41	2,610	2,272	2,136	6,024	7,379
Provo River									
Utah									
Deer Creek	PRWUA	Provo	Feb 58	2	5	5	5	21	14
Provo River Total				2	5	5	5	21	14
Salt Lake City Area/Integrated Projects									
Arizona									
Glen Canyon	Reclamation	Colorado	Sep 64	8	1,304	1,304	1,296	3,209	3,320
Colorado									
Blue Mesa	Reclamation	Gunnison	Sep 67	2	86	86	86	203	141
Crystal	Reclamation	Gunnison	Sep 78	1	32	32	28	138	4
Lower Molina	Reclamation	Pipeline	Dec 62	1	5	5	5	19	14
McPhee	Reclamation	Dolores	Jun 93	1	1	1	1	4	3
Morrow Point	Reclamation	Gunnison	Dec 70	2	173	173	173	269	194
Towaoc	Reclamation	Canal	Jun 93	1	11	11	11	13	16
Upper Molina	Reclamation	Pipeline	Dec 62	1	9	9	9	34	25
New Mexico									
Elephant Butte	Reclamation	Rio Grande	Nov 40	3	28	28	28	38	28
Utah									
Flaming Gorge	Reclamation	Green	Nov 63	3	152	152	152	344	234
Wyoming									
Fontenelle	Reclamation	Green	May 68	1	10	10	10	67	45
Salt Lake City Area/Integrated Projects Total				24	1,811	1,811	1,800	4,340	4,023
Washoe									
California									
Stampede	Reclamation	Little Truckee	Dec 86	1	4	3	4	8	13
Washoe Total				1	4	3	4	8	13
Grand Total				182	10,293	8,785	9,159	25,195	28,314

¹ Installed operating capability is the maximum generating capability of the units at unity power factor without exceeding the specified heat rise on each unit and is independent of water constraints.

² Net generation is gross plant generation less plant use. These amounts have not been reduced by other priorities such as project pumping energy.

³ Includes 4.8 MW reserved for plant use but included in number of units.

⁴ Coal-fired powerplant.

⁵ United States' share (24.3 percent) of 2,250 MW plant capability.

⁶ Pump/generating plant.

⁷ Total capacity at elevation 1902 feet and maximum release rate.

⁸ Federal share of 424 MW capability.

⁹ United States' share (50 percent) of plant capability.

¹⁰ RM and UGP each market half of the plant capability and energy.

¹¹ Only Unit 3 has pump/generation capability.

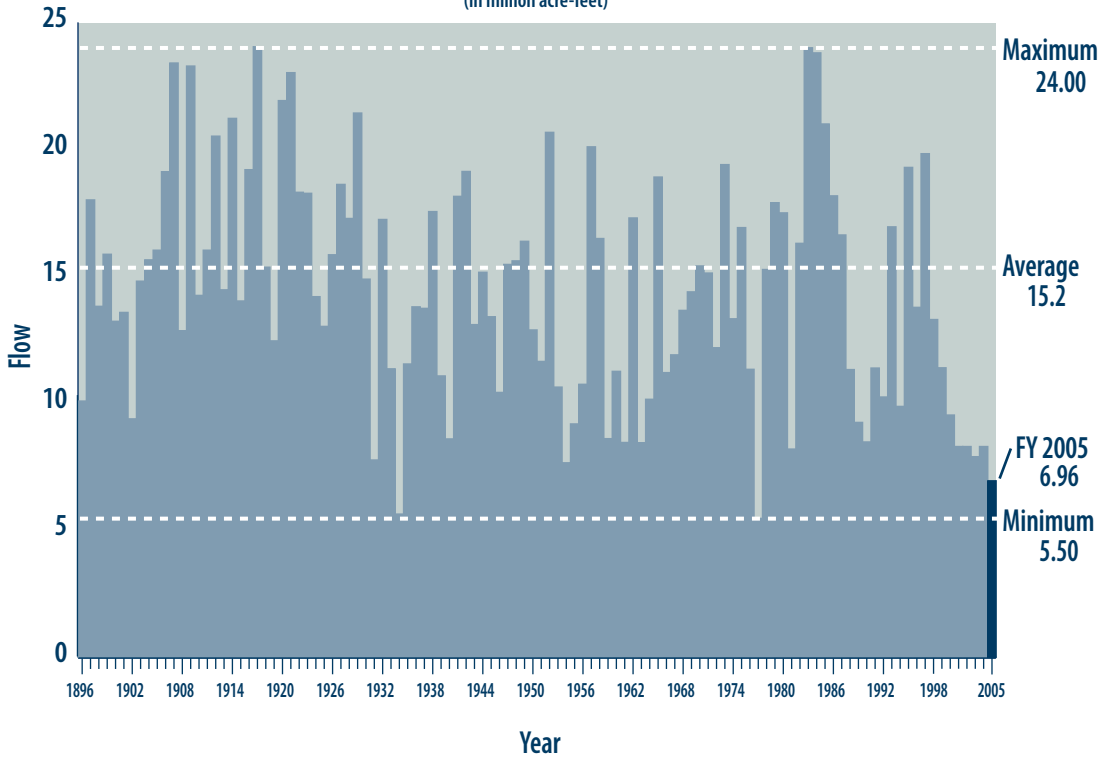
¹² Total number of units includes 2 station service units. Station service units' capacity is not included.

¹³ United States' share (47.67%) of plant capacity.

HISTORICAL FLOWS

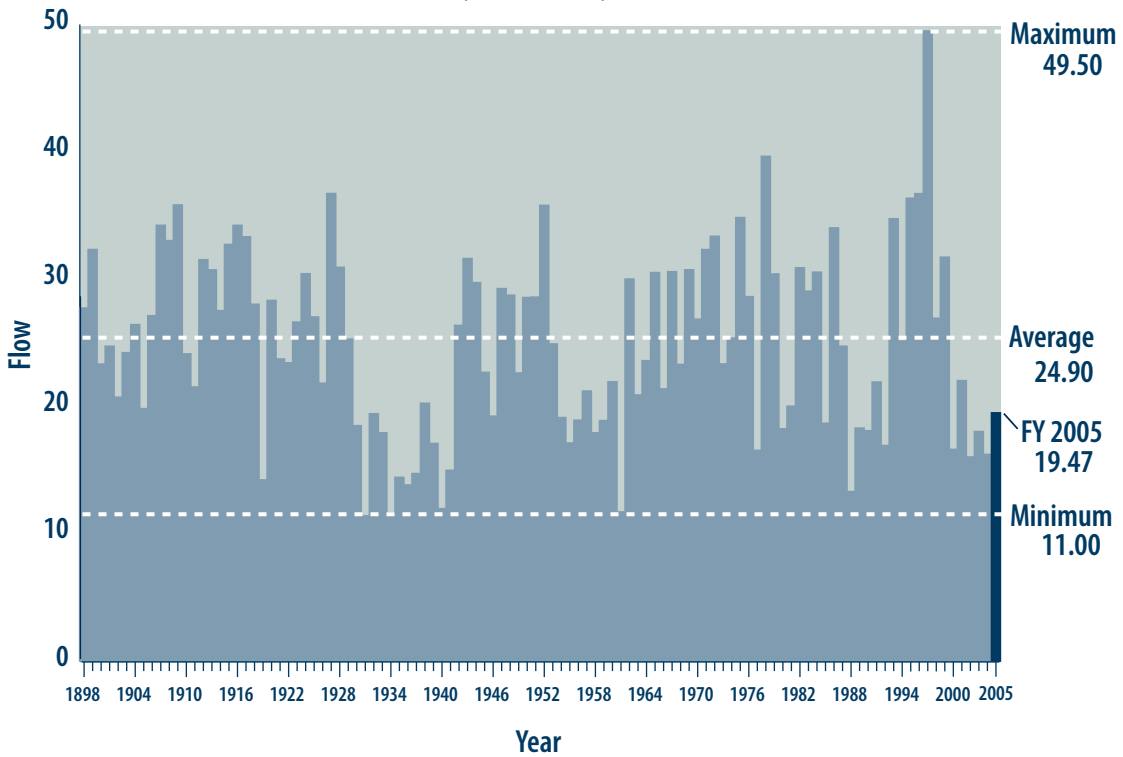
Colorado River Flow at Lees Ferry, Arizona

(in million acre-feet)

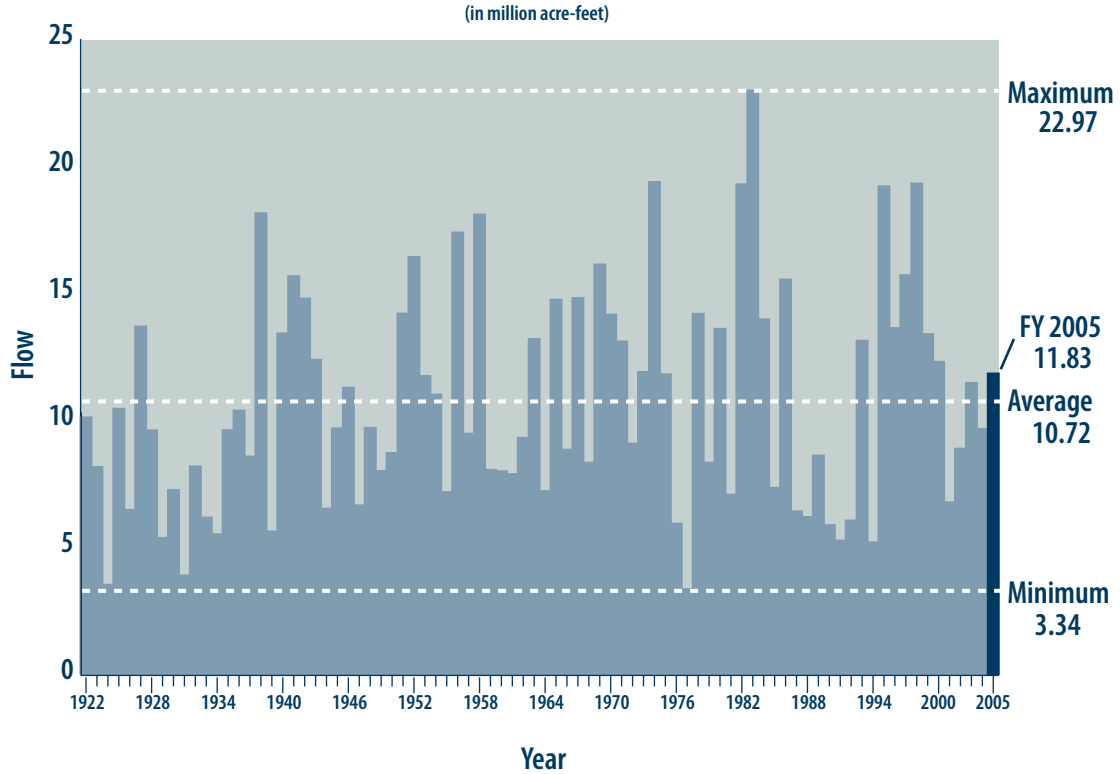


Missouri River Flow at Sioux City, Iowa

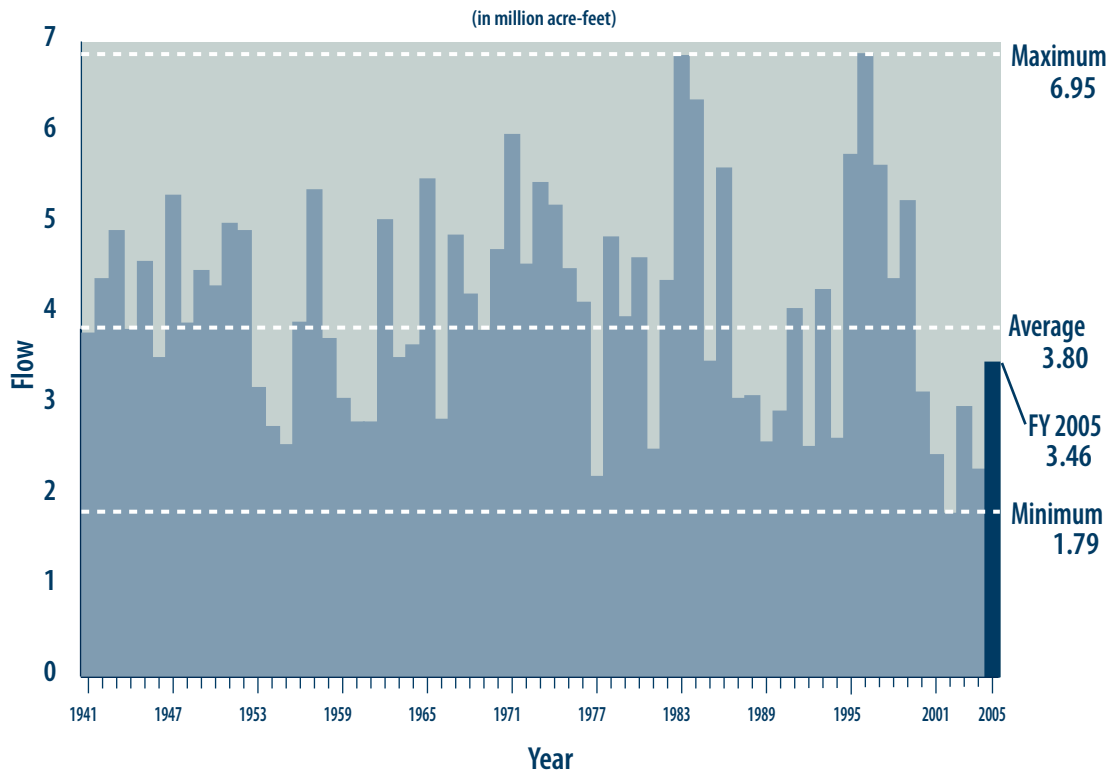
(in million acre-feet)



Sacramento and San Joaquin Rivers Annual Flow to Trinity, Shasta, Folsom and New Melones Reservoirs

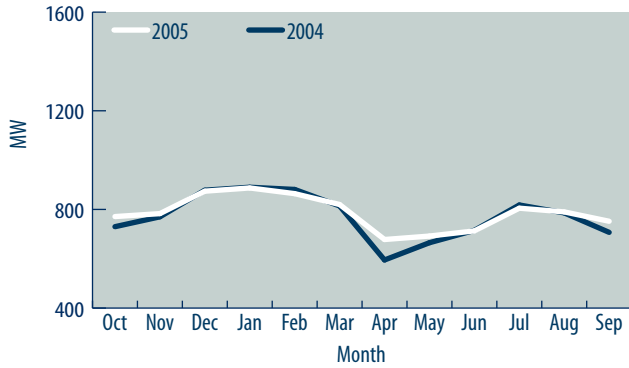


Big Thompson, North Platte and Bighorn Rivers

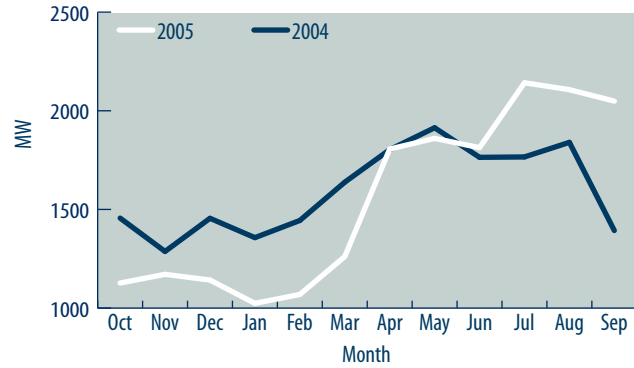


PEAK FIRM LOADS

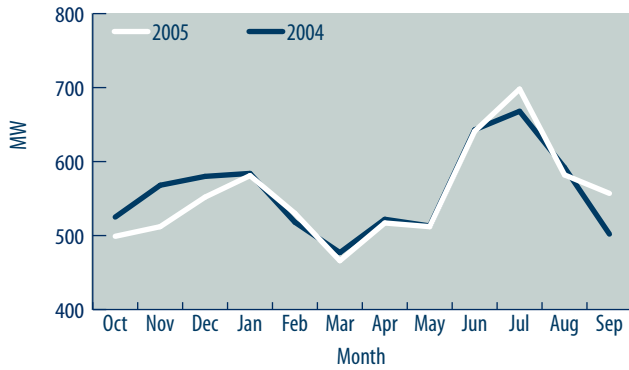
CRSP Management Center



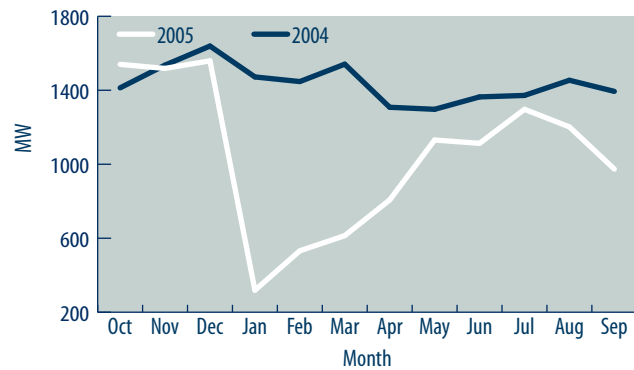
Desert Southwest



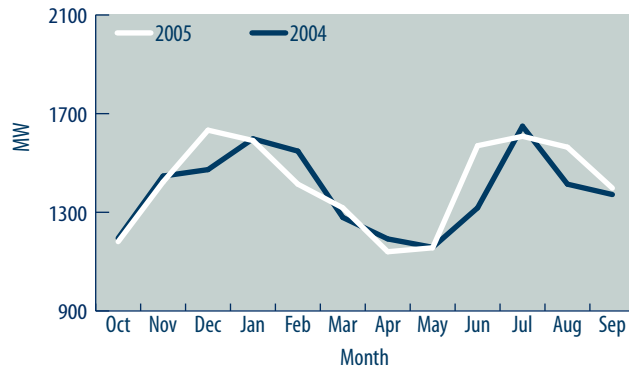
Rocky Mountain



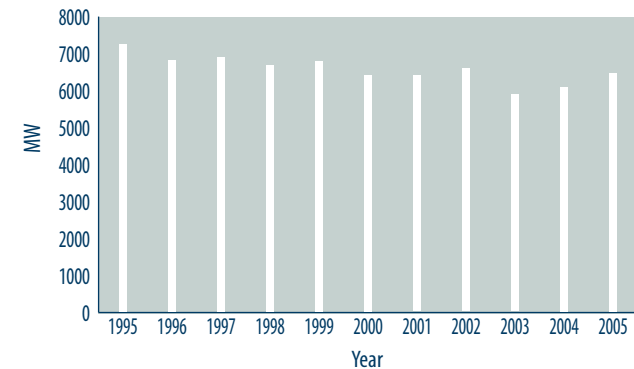
Sierra Nevada



Upper Great Plains



Annual Coincident Peak Firm Load



These graphs show monthly regional coincident peak firm loads, except that Sierra Nevada Project loads may not be coincident with the load management loads. Amounts for Desert Southwest and Rocky Mountain regions exclude Salt Lake City Area/Integrated Project loads. They are included in the CRSP MC amounts.

Our FY 2005 coincident firm and contingent peak load was 6,171 MW. The peak occurred on July 20, 2005 at 4 p.m. (MDT).

SALES

Power Sales By Project¹

Project	FY 2005		FY 2004	
	(MWh)	Revenues (\$)	(MWh)	Revenues (\$)
Boulder Canyon	3,150,562	57,707,164	3,897,122	51,769,331
Central Arizona (Navajo) ²	4,225,444	94,085,498	4,388,000	86,066,023
Central Valley	8,165,325	220,565,521	9,885,396	224,243,180
Falcon-Amistad	151,599	5,371,985	9,237	4,454,758
Loveland Area Projects	2,884,175	83,091,760	2,717,357	66,135,770
Parker-Davis	1,343,956	7,487,627	1,369,872	7,510,145
Pick-Sloan Missouri Basin--Eastern Div	10,292,330	227,173,487	11,486,293	234,168,081
Provo River	11,228	306,049	14,573	293,436
Salt Lake City Area Integrated Projects	5,220,729	138,936,979	5,844,538	158,271,544
Washoe	7,522	134,576	13,523	241,931
Total Western³	35,452,870	834,860,646	39,625,912	833,154,199

¹ Includes firm, nonfirm, project use, interdepartmental and interproject.

² On June 1, 1994, Salt River Project began acting as the scheduling agent for the Central Arizona Project portion of the Navajo Generating Station (547 MW). Western retains marketing and repayment responsibility and Salt River Project pays Western monthly fixed and variable costs to meet repayment requirements.

³ FY 2005 energy sales and revenue in this appendix are about \$28.2 million more than the amounts reprinted in the Combined Power System Statement of Revenues and Expenses and Accumulated Net Deficit due to: \$26.1 million in additional accounting entries to the financial statements which includes \$18.9 million for project use, \$15.8 million for invoice adjustments and accruals, \$4.7 million for energy banking, (\$7.6) million in transmission losses, (\$4.7) million for energy imbalance and (\$1) million for spinning reserves. The remaining \$2.1 million is due to eliminating entries in the financial statements required by accounting rules for interproject transactions.

Energy Sales by Customer Category

Customer Category	FY 2005		FY 2004	
	(MWh)	Revenues (\$)	(MWh)	Revenues (\$)
Municipalities	8,744,921	196,201,068	11,299,935	240,524,056
Cooperatives	7,104,343	156,072,573	7,204,416	150,144,311
Federal agencies	1,291,094	36,400,717	1,537,832	35,640,294
State agencies	8,025,592	160,386,527	8,611,930	143,161,309
Public utility districts	4,561,105	134,846,820	4,058,780	95,809,005
Native American tribes	1,015,098	18,260,817	677,701	10,026,978
Irrigation districts	572,976	8,858,201	739,945	15,267,467
Investor-owned utilities	671,919	32,562,339	1,239,247	45,283,168
Power marketers	1,303,814	61,928,852	2,201,284	70,984,154
Subtotal	33,290,862	805,517,914	37,571,070	806,840,741
Project Use	1,995,176	21,978,755	1,678,360	14,935,986
Interproject	166,832	7,363,977	376,482	11,377,473
Total Western¹	35,452,870	834,860,646	39,625,912	833,154,199

¹ FY 2005 energy sales and revenue in this appendix are about \$28.2 million more than the amounts reprinted in the Combined Power System Statement of Revenues and Expenses and Accumulated Net Deficit due to: \$26.1 million in additional accounting entries to the financial statements which includes \$18.9 million for project use, \$15.8 million for invoice adjustments and accruals, \$4.7 million for energy banking, (\$7.6) million in transmission losses, (\$4.7) million for energy imbalance and (\$1) million for spinning reserves. The remaining \$2.1 million is due to eliminating entries in the financial statements required by accounting rules for interproject transactions.

Energy Sales by State and Customer Category

State	Municipalities	Cooperatives	Federal agencies	State agencies	Public utility districts	Native American tribes	Irrigation districts	Investor-owned utilities	Marketers	Interproject	Project use	Total
Arizona												
Energy sales - MWh	160,023	157,310	55,125	5,325,171	0	601,421	128,102	20,418	0	48,737	195,267	6,691,574
Power revenue - \$	3,919,230	2,324,805	421,014	114,537,687	0	10,920,750	2,432,909	1,084,371	0	2,153,374	1,088,962	138,883,102
California												
Energy sales - MWh	2,351,894	40,488	959,065	1,245,875	3,393,715	13,326	429,723	66,795	28	0	1,675,347	10,176,256
Power revenue - \$	59,930,913	1,228,917	30,261,416	23,204,608	106,635,629	102,691	5,895,626	5,896,978	145,909	0	18,900,000	252,202,687
Colorado												
Energy sales - MWh	1,197,328	2,440,015	52,264	0	0	5,592		143,068		(266,232)	16,837	3,588,872
Power revenue - \$	29,967,153	61,313,012	1,025,413	0	0	132,660		5,156,861		(12,937,283)	420,609	85,078,425
Connecticut												
Energy sales - MWh	0	0	0	0	0	0	0	0	4,013	0	0	4,013
Power revenue - \$	0	0	0	0	0	0	0	0	138,188	0	0	138,188
Florida												
Energy sales - MWh	0	0	0	0	0	0	0	0	31,342	0	0	31,342
Power revenue - \$	0	0	0	0	0	0	0	0	1,578,709	0	0	1,578,709
Georgia												
Energy sales - MWh	0	0	0	0	0	0	0	0	50	0	0	50
Power revenue - \$	0	0	0	0	0	0	0	0	1,850	0	0	1,850
Indiana												
Energy sales - MWh	0	0	0	0	0	0	0	0	1,193	0	0	1,193
Power revenue - \$	0	0	0	0	0	0	0	0	1,735,297	0	0	1,735,297
Iowa												
Energy sales - MWh	680,425	505,061	0	0	0	0	0	11,642	0	0	0	1,197,128
Power revenue - \$	11,242,677	7,973,613	0	0	0	0	0	613,038	0	0	0	19,829,328
Kansas												
Energy sales - MWh	100,085	119,350	0	0	0	22,159	0	0	0	0	38	241,632
Power revenue - \$	2,311,423	2,311,452	0	0	0	536,097	0	0	0	0	94	5,159,066
Maryland												
Energy sales - MWh	0	0	0	0	0	0	0	0	1,811	0	0	1,811
Power revenues - \$	0	0	0	0	0	0	0	0	163,261	0	0	163,261
Minnesota												
Energy sales - MWh	1,411,425	576,304	0	40,488	4,008	13,014	0	33,422	364,274	0	0	2,442,935
Power revenue - \$	22,718,453	9,368,824	0	640,069	163,408	214,869	0	1,705,693	16,852,421	0	0	51,663,737
Missouri												
Energy sales - MWh	0	37,892	0	0	0	0	0	24,718	77,086	0	0	139,696
Power revenue - \$	0	1,358,406	0	0	0	0	0	1,017,296	3,598,087	0	0	5,973,789
Montana												
Energy sales - MWh	0	711,388	0	98	0	64,721	3,571	104,603	229	0	25,048	909,658
Power revenue - \$	0	12,207,953	0	5,219	0	1,068,557	64,397	3,990,078	9,633	0	65,073	17,410,910
Nebraska												
Energy sales - MWh	748,209	0	0	137,116	1,140,573	24,648	671	0	7,135	0	2,364	2,060,717
Power revenue - \$	17,601,248	0	0	2,182,541	26,973,004	406,945	11,962	0	303,505	0	6,482	47,485,687
Nevada												
Energy sales - MWh	60,227	0	25,844	1,037,765	0	2,409	0	9,823	0	0	0	1,136,068
Power revenue - \$	804,946	0	147,486	15,724,692	0	57,214	0	212,384	0	0	0	16,946,722

Energy Sales by State and Customer Category, continued

State	Municipalities	Cooperatives	Federal agencies	State agencies	Public utility districts	Native American tribes	Irrigation districts	Investor-owned utilities	Marketers	Interproject	Project use	Total
New Mexico												
Energy sales - MWh	227,626	47,780	89,559	0	0	34,468	0	47,748	0	0	61,310	508,491
Power revenue - \$	9,769,343	925,351	2,038,720	0	0	817,703	0	2,361,907	0	0	1,423,326	17,336,350
New York												
Energy sales - MWh	0	0	0	0	0	0	0	0	8,905	0	0	8,905
Power revenue - \$	0	0	0	0	0	0	0	0	448,468	0	0	448,468
North Dakota												
Energy sales - MWh	186,492	976,555	0	98,683	0	94,867	365	1,174	304,590	0	6,091	1,668,817
Power revenue - \$	3,211,313	26,526,252	0	1,686,570	0	1,568,395	7,767	42,760	13,423,712	0	22,370	46,489,139
Ohio												
Energy sales - MWh	0	0	0	0	0	0	0	0	200	0	0	200
Power revenue - \$	0	0	0	0	0	0	0	0	9,050	0	0	9,050
Oklahoma												
Energy sales - MWh	0	0	8,575	0	0	0	0	0	0	0	0	8,575
Power revenues - \$	0	0	571,225	0	0	0	0	0	0	0	0	571,225
Oregon												
Energy sales - MWh	0	0	0	0	0	0	0	44,036	1,865	0	0	45,901
Power revenue - \$	0	0	0	0	0	0	0	1,504,660	295,182	0	0	1,799,842
South Dakota												
Energy sales - MWh	696,889	954,717	57,907	124,262	22,459	131,759	0	140,805	0	0	1,892	2,130,690
Power revenue - \$	11,840,089	15,669,958	1,006,957	2,052,568	1,057,229	2,273,595	0	8,030,339	0	0	5,966	41,936,701
Texas												
Energy sales - MWh	0	151,599	0	0	0	0	0	238	374,187	0	0	526,024
Power revenue - \$	0	5,371,985	0	0	0	0	0	12,451	19,889,183	0	0	25,273,619
Utah												
Energy sales - MWh	850,810	385,294	26,409	16,134	0	842	10,357	0	34	384,327	632	1,674,839
Power revenue - \$	21,019,649	9,479,521	613,100	352,573	0	19,962	441,069	0	1,700	18,147,886	19,998	50,095,458
Washington												
Energy sales - MWh	0	0	0	0	0	0	0	0	70	0	0	70
Power revenue - \$	0	0	0	0	0	0	0	0	4,140	0	0	4,140
Wisconsin												
Energy sales - MWh	0	0	0	0	350	0	0	17,730	0	0	0	18,080
Power revenue - \$	0	0	0	0	17,550	0	0	654,296	0	0	0	671,846
Wyoming												
Energy sales - MWh	73,487	590	16,346	0	0	5,872	187	0	0	0	10,350	106,832
Power revenue - \$	1,864,632	12,524	315,386	0	0	141,379	4,471	0	0	0	25,875	2,364,266
Canada												
Energy sales - MWh	0	0	0	0	0	0	0	5,699	126,802	0	0	132,501
Power revenue - \$	0	0	0	0	0	0	0	279,227	3,330,557	0	0	3,609,784
Total												
Energy sales - MWh	8,744,921	7,104,343	1,291,094	8,025,592	4,561,105	1,015,098	572,976	671,919	1,303,814	166,832	1,995,176	35,452,870
Power revenue - \$	196,201,068	156,072,573	36,400,717	160,386,527	134,846,820	18,260,817	8,858,201	32,562,339	61,968,852	7,363,977	21,978,755	834,860,646

Firm and NonFirm Energy Sales by Project

Project	FY 2005			FY 2004		
	Firm	Nonfirm	Total	Firm	Nonfirm	Total
Boulder Canyon						
Energy sales - MWh	3,150,562	0	3,150,562	3,897,122	0	3,897,122
Power revenues - \$	57,707,164	0	57,707,164	51,769,331	0	51,769,331
Central Arizona						
Energy sales - MWh	4,225,444	0	4,225,444	4,388,000	0	4,388,000
Power revenues - \$	94,085,498	0	94,085,498	86,066,023	0	86,066,023
Central Valley						
Energy sales - MWh	6,287,488	202,490	6,489,978	7,644,099	904,858	8,548,957
Power revenues - \$	191,788,371	9,877,150	201,665,521	198,736,827	14,736,353	213,473,180
Falcon-Amistad						
Energy sales - MWh	0	151,599	151,599	0	9,237	9,237
Power revenues - \$	0	5,371,985	5,371,985	0	4,454,758	4,454,758
Loveland Area Projects						
Energy sales - MWh	2,037,941	451,269	2,489,210	2,040,160	416,013	2,456,173
Power revenues - \$	48,720,390	16,195,762	64,916,152	46,724,708	11,917,627	58,642,335
Parker-Davis						
Energy sales - MWh	1,148,689	0	1,148,689	1,174,496	0	1,174,496
Power revenues - \$	6,398,665	0	6,398,665	6,420,695	0	6,420,695
Provo River						
Energy sales - MWh	0	11,228	11,228	0	14,573	14,573
Power revenues - \$	0	306,049	306,049	0	293,436	293,436
Pick-Sloan Missouri Basin Program—Eastern Division						
Energy sales - MWh	8,929,941	1,326,714	10,256,655	8,892,844	2,546,843	11,439,687
Power revenues - \$	161,619,319	65,443,597	227,062,916	149,689,579	84,161,632	233,851,211
Salt Lake City Area Integrated Projects						
Energy Sales - MWh	4,623,749	736,226	5,359,975	4,571,890	1,057,411	5,629,301
Power Revenues - \$	109,349,837	38,519,551	147,869,388	109,432,888	42,194,953	151,627,841
Washoe						
Energy sales - MWh	0	7,522	7,522	0	13,523	13,523
Power revenues - \$	0	134,576	134,576	0	241,931	241,931
Subtotal						
Energy sales - MWh	30,403,814	2,887,048	33,290,862	32,608,612	4,962,458	37,571,070
Power revenues - \$	669,669,244	135,848,670	805,517,914	648,840,051	158,000,690	806,840,741
Project use						
Energy sales - MWh	1,995,176	0	1,995,176	1,678,360	0	1,678,360
Power revenues - \$	21,978,755	0	21,978,755	14,935,986	0	14,935,986
Subtotal						
Energy sales - MWh	32,398,990	2,887,048	35,286,038	34,286,972	4,962,458	39,249,430
Power revenues - \$	691,647,999	135,848,670	827,496,669	663,776,037	158,000,690	821,776,727
Interproject						
Energy sales - MWh	0	166,832	166,832	0	376,482	376,482
Power revenues - \$	0	7,363,977	7,363,977	0	11,377,473	11,377,473
Total Western						
Energy sales - MWh	32,398,990	3,053,880	35,452,870	34,286,972	5,338,940	39,625,912
Power revenues - \$	691,647,999	143,212,647	834,860,646	663,776,037	169,378,162	833,154,199

Firm and Nonfirm Energy Sales by Customer Category

Customer category	FY 2005			FY 2004		
	Firm	Nonfirm	Total	Firm	Nonfirm	Total
Municipalities						
Energy sales - MWh	8,407,429	337,492	8,744,921	10,399,269	900,667	11,299,935
Revenues - \$	177,024,948	19,176,120	196,201,068	217,728,343	22,795,714	240,524,056
Cooperatives						
Energy sales - MWh	6,721,911	382,432	7,104,343	6,967,415	237,000	7,204,416
Revenues - \$	139,242,839	16,829,734	156,072,573	139,408,725	10,735,586	150,144,311
Federal agencies						
Energy sales - MWh	1,282,509	8,585	1,291,094	1,537,832	0	1,537,832
Revenues - \$	35,576,796	823,921	36,400,717	35,640,294	0	35,640,294
State agencies						
Energy sales - MWh	7,965,471	60,121	8,025,592	8,543,316	68,614	8,611,930
Revenues - \$	157,581,367	2,805,160	160,386,527	140,334,735	2,826,574	143,161,309
Public utility districts						
Energy sales - MWh	4,386,427	174,678	4,561,105	3,545,825	512,955	4,058,780
Revenues - \$	127,963,360	6,883,460	134,846,820	86,177,409	9,631,596	95,809,005
Native American tribes						
Energy sales - MWh	1,011,914	3,184	1,015,098	670,825	6,876	677,701
Revenues - \$	18,114,558	146,259	18,260,817	9,745,283	281,695	10,026,978
Irrigation districts						
Energy sales - MWh	562,608	10,368	572,976	734,088	5,857	739,945
Revenues - \$	8,416,266	441,935	8,858,201	14,645,422	622,044	15,267,467
Investor-owned utilities						
Energy sales - MWh	65,545	606,374	671,919	210,042	1,029,205	1,239,247
Revenues - \$	5,749,110	26,813,229	32,562,339	5,159,842	40,123,326	45,283,168
Power marketers						
Energy sales - MWh	0	1,303,814	1,303,814	0	2,201,284	2,201,284
Revenues - \$	0	61,928,852	61,928,852	0	70,984,154	70,984,154
Subtotal						
Energy sales - MWh	30,403,814	2,887,048	33,290,862	32,608,612	4,962,458	37,571,070
Revenues - \$	669,669,244	135,848,670	805,517,914	648,840,051	158,000,690	806,840,741
Project use						
Energy sales - MWh	1,995,176	0	1,995,176	1,678,360	0	1,678,360
Revenues - \$	21,978,755	0	21,978,755	14,935,986	0	14,935,986
Total Western						
Energy sales - MWh	32,398,990	2,887,048	35,286,038	34,286,972	4,962,458	39,249,430
Revenues - \$	691,647,999	135,848,670	827,496,669	663,776,037	158,000,690	821,776,727
Interproject						
Energy sales - MWh	0	166,832	166,832	0	376,482	376,482
Revenues - \$	0	7,363,977	7,363,977	0	11,377,473	11,377,473
Total Western						
Energy sales - MWh	32,398,990	3,053,880	35,452,870	34,286,972	5,338,940	39,625,912
Revenues - \$	691,647,999	143,212,647	834,860,646	663,776,037	169,378,162	833,154,199

Purchased Power Cost by Project

Project and source	FY 2005		FY 2004	
	Energy (MWh)	Cost \$(000)	Energy (MWh)	Cost \$(000)
Central Valley				
NonWestern	3,940,400	152,799	5,559,974	123,984
Total project purchases	3,940,400	152,799	5,559,974	123,984
Loveland Area Projects				
NonWestern	1,023,019	50,570	1,212,754	54,201
Western	26,515	1,593	26,323	1,137
Total project purchases	1,049,534	52,530¹	1,239,077	54,967
Parker-Davis				
NonWestern	104,734	5,794	0	0
Western	18,660	1,101	0	0
Total project purchases	123,394	6,900²	0	0
Pick-Sloan Missouri Basin Program—Eastern Division				
NonWestern	5,134,772	214,983	4,672,038	151,139
Western	0	0	55	2
Total project purchases	5,134,772	214,983	4,672,093	151,141
Salt Lake City Area Integrated Projects				
NonWestern	1,313,690	68,278	1,452,008	65,793
Western	113,857	2,444	242,584	7,603
Total project purchases	1,427,547	70,722	1,694,592	73,396
Total Western				
NonWestern	11,516,615	492,424	12,896,774	395,117
Western	159,032	5,138	268,962	8,742
Total power purchases	11,675,647	497,562	13,165,736	403,859

¹ Reduced to reflect Trust Account activity.

² Includes transaction fees associated with the direct marketing and implementation of purchase schedules.

Purchased Transmission Cost by Project

Project and source	FY 2005	FY 2004
	Cost \$(000)	Cost \$(000)
Central Valley		
NonWestern	19,841	280
Total project purchases	19,841	280
Loveland Area Projects		
NonWestern	6,682	8,011
Total project purchases	6,682	8,011
Pick-Sloan Missouri Basin Program—Eastern Division		
NonWestern	2,855	2,692
Total project purchases	2,855	2,692
Salt Lake City Area Integrated Projects		
NonWestern	8,047	7,720
Western	1,608	1,608
Total project purchases	9,655	9,328
Total Western		
NonWestern	37,425	18,703
Western	1,608	1,608
Total transmission purchases	39,033	20,311

Purchased Ancillary Services Cost by Project

Project and source	FY 2005	FY 2004
	Cost \$(000)	Cost \$(000)
Loveland Area Projects		
NonWestern	13	0
Western	2	14
Total project purchases	15	14
Total Western		
NonWestern	13	0
Western	2	14
Total ancillary services purchases	15	14

Top 25 Customers in Energy Sales - FY 2005

Firm energy sales			
Rank	Customer	MWh	Percent of total firm sales
1	Salt River Project	4,615,573	15.2
2	Sacramento Municipal Utility District	2,568,780	8.4
3	Tri-State Generation and Transmission Assn.	2,212,489	7.3
4	Colorado River Commission of Nevada	1,037,765	3.4
5	Metropolitan Water District of Southern California	972,674	3.2
6	Nebraska Public Power District	731,589	2.4
7	East River Power Co-op.	701,408	2.3
8	Arizona Power Authority	649,775	2.1
9	Platte River Power Authority	573,174	1.9
10	Redding, California	499,361	1.6
11	Los Angeles Department of Water and Power	492,508	1.6
12	Silicon Valley Power	445,070	1.5
13	Utah Associated Municipal Power	439,989	1.4
14	Northern California Power Agency	421,197	1.4
15	Deseret Generation & Transmission	384,529	1.3
16	Omaha Public Power District	379,893	1.2
17	Minnkota Power Co-op.	359,011	1.2
18	Colorado Springs Utilities	335,900	1.1
19	Central Power Electric Co-op.	318,609	1.0
20	Upper Missouri G&T Electric Co-op.	296,614	1.0
21	Centra Montana Electric Power Co-op.	290,967	1.0
22	Utah Municipal Power Agency	267,626	0.9
23	Department of Energy—California labs	266,865	0.9
24	Palo Alto, California	246,794	0.8
25	Navajo Tribal Utility Authority	237,965	0.8
Total		19,746,125	64.9

Nonfirm energy sales			
Rank	Customer	MWh	Percent of total nonfirm sales
1	Rainbow Energy Marketing Corp.	304,590	11.0
2	Cargill-Alliant	300,434	10.4
3	Conoco, Inc.	197,885	6.9
4	Medina Electric Cooperative and South Texas Electric Cooperative	151,599	5.3
5	Xcel Energy	143,068	5.0
6	Basin Electric Power Cooperative	117,145	4.1
7	Sacramento Municipal Utility District	116,672	4.0
8	El Paso Energy Marketing Co.	111,888	3.9
9	Northwestern Public Service Co.	107,545	3.7
10	PP&L Montana, LLC	84,930	2.9
11	Farmington, New Mexico	83,030	2.9
12	Westar Energy (Western Resources)	71,887	2.5
13	Salt River Project	59,823	2.1
14	Coral Power, LLC	50,901	1.8
15	Northpoint Energy Solutions	50,861	1.8
16	Colorado Springs Utilities	48,186	1.7
17	Public Service Company of New Mexico	47,748	1.7
18	PacifiCorp	44,036	1.5
19	Associated Electric Schedule Trans.	37,892	1.3
20	Los Alamos County, New Mexico	36,816	1.3
21	Black Hills Power & Light	33,260	1.2
22	Burbank, California	31,145	1.1
23	Lighthouse Energy Trading Company	30,907	1.1
24	Tri-State Generation & Transmission Assn.	29,754	1.0
25	Page, Arizona	29,487	1.0
Total		2,321,489	80.4

Top 25 Customers in Power Revenues - FY 2005

Firm power revenues

Rank	Customer	Revenue (\$)	Percent of total firm revenue
1	Salt River Project	100,710,962	15.0
2	Sacramento Municipal Utility District	90,394,304	13.5
3	Tri-State Generation and Transmission Assn.	54,758,997	8.2
4	Nebraska Public Power District	19,162,032	2.9
5	Colorado River Commission of Nevada	15,724,692	2.3
6	Redding, California	13,332,789	2.0
7	Platte River Power Authority	12,753,186	1.9
8	Metropolitan Water District of Southern California	11,884,100	1.8
9	Los Angeles Department of Water and Power	11,699,029	1.7
10	East River Power Coop.	11,097,757	1.7
11	Arizona Power Authority	11,033,982	1.6
12	Silicon Valley Power	10,898,441	1.6
13	Utah Associated Municipal Power	10,637,961	1.6
14	University of California at Davis	9,599,377	1.4
15	Deseret Generation & Transmission	9,438,145	1.4
16	Basin Electric Power Cooperative	7,901,407	1.2
17	Colorado Springs Utilities	7,775,202	1.2
18	Palo Alto, California	7,589,223	1.1
19	Department of Energy — California labs	7,010,940	1.0
20	NASA — Ames Research Center	6,470,483	1.0
21	Utah Municipal Power Agency	6,435,466	1.0
22	Omaha Public Power District	5,919,329	0.9
23	Southern California Edison Company	5,749,110	0.9
24	Minnkota Power Co-op.	5,699,066	0.9
25	Northern California Power Agency	5,537,098	0.8
Total		459,213,078	68.6

Nonfirm power revenues

Rank	Customer	Revenue (\$)	Percent of total nonfirm revenue
1	Cargill-Alliant	13,699,737	10.1
2	Rainbow Energy Marketing Corp.	13,423,712	9.9
3	Conoco Inc.	9,268,336	6.8
4	Northwestern Public Service Co.	6,777,849	5.0
5	El Paso Energy Marketing Company	6,152,262	4.5
6	Basin Electric Power Cooperative	5,933,801	4.4
7	Medina Electric Cooperative and South Texas Electric Cooperative	5,371,985	4.0
8	Farmington, New Mexico	5,191,777	3.8
9	Xcel Energy	5,156,861	3.8
10	Sacramento Municipal Utility District	3,620,140	2.7
11	Westar Energy (Western Resources)	3,197,480	2.4
12	PP&L Montana, LLC	3,147,617	2.3
13	Coral Power, LLC	3,131,221	2.3
14	Salt River Project	2,792,743	2.1
15	Colorado Springs Utilities	2,406,839	1.8
16	Public Service Company of New Mexico	2,361,907	1.7
17	Los Alamos County, New Mexico	2,079,504	1.5
18	Page, Arizona	1,998,961	1.5
19	Omaha Public Power District	1,834,991	1.4
20	Lighthouse Energy Trading Company	1,767,316	1.3
21	Lincoln, Nebraska	1,758,516	1.3
22	Midwest Independent System Operator Energy Market	1,735,297	1.3
23	Northpoint Energy Solutions	1,703,061	1.3
24	Tri-State Generation & Transmission Assn.	1,567,547	1.2
25	Platte River Power Authority	1,558,120	1.1
Total		105,070,769	82.4

Transmission Revenues by Project

Project	FY 2005	FY 2004
	Revenues (\$)	Revenues (\$)
Central Arizona	25,508,944	25,059,466
Central Valley	14,978,609	10,581,007
Loveland Area Projects	32,993,424	28,178,923
Pacific NW-SW Intertie Project	28,686,822	25,160,211
Parker-Davis	34,139,427	33,401,696
Pick-Sloan Missouri Basin—Eastern Division	31,604,083	30,269,128
Salt Lake City Area Integrated Projects	19,290,443	18,033,598
Total Western	187,201,752	170,684,029

Ancillary Services Revenues by Project

Project	FY 2005	FY 2004
	Revenues (\$)	Revenues (\$)
Boulder Canyon	818,499	0
Central Valley	1,166,716	374,862
Loveland Area Projects	2,984,512	2,470,205
Parker-Davis	109,214	41,232
Pick-Sloan Missouri Basin—Eastern Division	1,832,583	2,167,651
Salt Lake City Area Integrated Projects	5,297,823	4,273,011
Total Western	12,209,347	9,326,961

Energy Imbalance

Project	FY 2005	FY 2004
	Revenues (\$)	Revenues (\$)
Loveland Area Projects	923,265	(4,269,344)
Total Western	923,265	(4,269,344)

Customers by Customer Category

Customer category	2005				2004			
	Firm only	Firm & nonfirm	Nonfirm only	Total	Firm only	Firm & nonfirm	Nonfirm only	Total
Municipalities ¹	254	42	4	300	242	52	5	299
Cooperatives	55	5	6	66	49	6	5	60
Public utility districts	19	5	5	19	5	7	5	17
Federal agencies	34	1	1	36	35	0	0	35
State agencies	47	4	0	51	44	3	0	47
Irrigation districts ¹	51	1	1	53	45	1	1	47
Investor-owned utilities	0	1	24	25	1	0	24	25
Native American tribes	85	2	0	87	29	3	0	32
Power marketers	0	0	29	29	0	0	29	29
Project use sales	81	0	0	81	82	0	0	82
Subtotal	616	61	70	747	532	72	69	673
Interproject sales	0	0	4	4	0	0	5	5
Total	616	61	74	751	532	72	74	678

¹ Customer count includes 33 Utah Associated Municipal Power System members (30 municipalities and 3 irrigation districts).

Customer Count by Project¹

Project	2005				2004			
	Firm only	Firm & nonfirm	Nonfirm only	Total	Firm only	Firm & nonfirm	Nonfirm only	Total
Boulder Canyon	15	0	0	15	15	0	0	15
Total Boulder Canyon	15	0	0	15	15	0	0	15
Central Arizona	1	0	0	1	1	0	0	1
Total Central Arizona	1	0	0	1	1	0	0	1
Central Valley	83	5	14	102	52	19	3	74
Project use sales	34	0	0	34	34	0	0	34
Total Central Valley	117	5	14	136	86	19	3	108
Falcon-Amistad	0	0	2	2	0	0	2	2
Total Falcon-Amistad	0	0	2	2	0	0	2	2
Loveland Area Projects	38	5	13	56	27	5	13	45
Project use sales	13	0	0	13	13	0	0	13
Interproject sales	0	0	1	1	0	0	2	2
Total Loveland Area Projects	51	5	14	70	40	5	15	60
Parker-Davis	24	0	0	24	25	0	0	25
Project use sales	2	0	0	2	2	0	0	2
Total Parker-Davis	26	0	0	26	27	0	0	27
Pick-Sloan—Eastern Division	281	11	39	331	285	9	41	335
Project use sales	28	0	0	28	29	0	0	29
Interproject sales	0	0	1	1	0	0	1	1
Total Pick-Sloan—Eastern Division	309	11	40	360	314	9	42	365
Provo	0	0	2	2	0	0	2	2
Total Provo	0	0	2	2	0	0	2	2
Salt Lake Integrated Projects²	122	42	38	202	69	43	37	149
Project use sales	4	0	0	4	4	0	0	4
Interproject sales	0	0	2	2	0	0	2	2
Total Salt Lake Integrated Projects	126	42	40	208	73	43	39	155
Washoe	0	0	1	1	0	0	1	1
Total Washoe	0	0	1	1	0	0	1	1

¹ Double counting occurs when more than one project sells power to the same customer.

² Customer count includes 33 Utah Associated Municipal Power System members.

Customers by State and Customer Category

State/Customer category	2005				2004			
	Firm only	Firm & nonfirm	Nonfirm only	Total	Firm only	Firm & nonfirm	Nonfirm only	Total
Arizona								
Municipalities	5	1	0	6	5	0	1	6
Cooperatives	0	1	2	3	0	1	2	3
Federal agencies	4	0	0	4	4	0	0	4
State agencies	1	1	0	2	1	1	0	2
Irrigation districts	16	0	0	16	15	0	0	15
Investor-owned utilities	0	0	3	3	0	0	3	3
Power marketers	0	0	0	0	0	0	1	1
Native American tribes	19	1	0	20	3	2	0	5
California								
Municipalities	28	2	2	32	16	13	1	30
Cooperatives	1	0	0	1	0	1	0	1
Federal agencies	14	1	0	15	15	0	0	15
State agencies	13	0	0	13	9	0	0	9
Public utility districts	19	3	0	12	5	5	0	10
Irrigation districts	26	0	1	27	21	1	0	22
Investor-owned utilities	0	1	1	2	1	0	0	1
Native American tribes	5	0	0	5	1	0	0	1
Colorado								
Municipalities	17	2	0	19	16	2	0	18
Cooperatives	4	1	1	6	4	1	0	5
Federal agencies	5	0	0	5	5	0	0	5
Investor-owned utilities	0	0	1	1	0	0	1	1
Native American tribes	2	0	0	2	0	0	0	0
Connecticut								
Power marketers	0	0	2	2	0	0	2	2
Florida								
Power marketers	0	0	3	3	0	0	2	2
Georgia								
Power marketers	0	0	1	1	0	0	0	0
Idaho								
Investor-owned utilities	0	0	0	0	0	0	1	1
Indiana								
Investor-owned utilities	0	0	1	1	0	0	0	0
Iowa								
Municipalities	47	0	2	49	47	0	2	49
Cooperatives	4	0	0	4	4	0	0	4
Investor-owned utilities	0	0	2	2	0	0	2	2
Kansas								
Municipalities	2	0	0	2	2	0	0	2
Cooperatives	6	0	0	6	1	0	0	1
Native American tribes	4	0	0	4	0	0	0	0
Maryland								
Power marketers	0	0	1	1	0	0	1	1

Customers by State and Customer Category , continued

State/Customer category	2005				2004			
	Firm only	Firm & nonfirm	Nonfirm only	Total	Firm only	Firm & nonfirm	Nonfirm only	Total
Minnesota								
Municipalities	47	0	0	47	47	0	1	48
Cooperatives	15	0	0	15	15	0	0	15
State agencies	3	0	0	3	3	0	0	3
Public utility districts	0	0	2	2	0	0	2	2
Investor-owned utilities	0	0	2	2	0	0	2	2
Native American tribes	2	0	0	2	2	0	0	2
Power marketers	0	0	4	4	0	0	5	5
Missouri								
Cooperatives	0	0	1	1	0	0	1	1
Investor-owned utilities	0	0	2	2	0	0	2	2
Power marketers	0	0	2	2	0	0	2	2
Montana								
Cooperatives	4	0	0	4	4	0	0	4
State agencies	0	0	0	1	1	0	0	1
Irrigation districts	3	0	0	3	3	0	0	3
Investor-owned utilities	0	0	2	2	0	0	2	2
Native American tribes	4	0	0	4	6	0	0	6
Power marketers	0	0	1	1	0	0	1	1
Nebraska								
Municipalities	54	3	0	57	55	2	0	57
Public utility districts	0	2	0	2	0	2	0	2
State agencies	8	0	0	8	0	0	0	8
Irrigation districts	1	0	0	1	1	0	0	1
Power marketers	0	0	1	1	0	0	1	1
Native American tribes	4	0	0	4	4	0	0	4
Nevada								
Municipalities	1	0	0	1	1	0	0	1
Cooperatives	1	0	0	1	1	0	0	1
Federal agencies	2	0	0	2	2	0	0	2
State agencies	1	0	0	1	1	0	0	1
Investor-owned utilities	0	0	2	2	0	0	2	2
Native American tribes	4	0	0	4	0	0	0	0
New Mexico								
Municipalities	3	2	0	5	3	2	0	5
Cooperatives	4	0	0	4	4	0	0	4
Federal agencies	4	0	0	4	4	0	0	4
Investor-owned utilities	0	0	1	1	0	0	1	1
Native American tribes	24	0	0	24	0	0	0	0
New York								
Power marketers	0	0	1	1	0	0	1	1
North Dakota								
Municipalities	12	0	0	12	12	0	0	12
Cooperatives	5	2	0	7	5	2	0	7
State agencies	12	0	0	12	12	0	0	12
Irrigation districts	1	0	0	1	1	0	0	1
Investor-owned utilities	0	0	1	1	0	0	1	1
Native American tribes	6	0	0	6	6	0	0	6
Power marketers	0	0	1	1	0	0	1	1

Customers by State and Customer Category , continued

State/Customer category	2005				2004			
	Firm only	Firm & nonfirm	Nonfirm only	Total	Firm only	Firm & nonfirm	Nonfirm only	Total
Ohio								
Power marketers	0	0	1	1	0	0	0	0
Oklahoma								
Federal agencies	0	0	1	1	0	0	0	0
Oregon								
Investor-owned utilities	0	0	1	1	0	0	1	1
Power marketers	0	0	1	1	0	0	2	2
South Dakota								
Municipalities	33	0	0	33	33	0	0	33
Cooperatives	5	0	0	5	5	0	0	5
Federal agencies	1	0	0	1	1	0	0	1
State agencies	7	2	0	9	7	2	0	9
Public utility districts	0	0	2	2	0	0	2	2
Investor-owned utilities	0	0	2	2	0	0	2	2
Native American tribes	7	1	0	8	7	1	0	8
Texas								
Cooperatives	0	0	2	2	0	0	2	2
Investor-owned utilities	0	0	1	1	0	0	1	1
Power marketers	0	0	5	5	0	0	6	6
Utah¹								
Municipalities	3	32	0	35	3	33	0	36
Cooperatives	4	1	0	5	4	1	0	5
Federal agencies	3	0	0	3	3	0	0	3
State agencies	2	0	0	2	2	0	0	2
Irrigation districts	2	1	0	3	2	0	1	3
Power marketers	0	0	1	1	0	0	1	1
Native American tribes	3	0	0	3	0	0	0	0
Washington								
Power marketers	0	0	1	1	0	0	0	0
Wisconsin								
Public utility districts	0	0	1	1	0	0	1	1
Investor-owned utilities	0	0	1	1	0	0	2	2
Wyoming								
Municipalities	2	0	0	2	2	0	0	2
Cooperatives	2	0	0	2	2	0	0	2
Federal agencies	1	0	0	1	1	0	0	1
Irrigation districts	2	0	0	2	2	0	0	2
Native American tribes	1	0	0	1	0	0	0	0
Canada								
Power marketers	0	0	3	3	0	0	3	3
Investor-owned utilities	0	0	1	1	0	0	1	1
Subtotal	535	61	70	666	450	72	69	591
Project use sales	81	0	0	81	82	0	0	82
Subtotal	616	64	70	747	532	72	69	673
Interproject sales	0	0	4	4	0	0	5	5
Total	616	61	74	751	532	72	74	678

¹ Customer count includes 33 Utah Associated Municipal Power System members (30 municipalities and 3 irrigation districts).

Customers by State

State	2005				2004			
	Firm only	Firm & nonfirm	Nonfirm only	Total	Firm only	Firm & nonfirm	Nonfirm only	Total
Arizona	45	4	5	54	28	4	7	39
California	96	7	4	107	68	20	1	89
Colorado	28	3	2	33	25	3	1	29
Connecticut	0	0	2	2	0	0	2	2
Delaware	0	0	0	0	0	0	0	0
Florida	0	0	3	3	0	0	2	2
Georgia	0	0	1	1	0	0	0	0
Idaho	0	0	0	0	0	0	1	1
Indiana	0	0	1	1	0	0	0	0
Iowa	51	0	4	55	51	0	4	55
Kansas	12	0	0	12	3	0	0	3
Maryland	0	0	1	1	0	0	1	1
Minnesota	67	0	8	75	67	0	10	77
Missouri	0	0	5	5	0	0	5	5
Montana	11	1	3	15	14	0	3	17
Nebraska	67	5	1	73	68	4	1	73
Nevada	9	0	2	11	5	0	2	7
New Mexico	35	2	1	38	11	2	1	14
New York	0	0	1	1	0	0	1	1
North Dakota	36	2	2	40	36	2	2	40
Ohio	0	0	1	1	0	0	0	0
Oklahoma	0	0	1	1	0	0	0	0
Oregon	0	0	2	2	0	0	3	3
South Dakota	53	3	4	60	53	3	4	60
Texas	0	0	8	8	0	0	9	9
Utah ¹	17	34	1	52	14	34	2	50
Washington	0	0	1	1	0	0	0	0
Wisconsin	0	0	2	2	0	0	3	3
Wyoming	8	0	0	8	7	0	0	7
Canada	0	0	4	4	0	0	4	4
Subtotal	535	61	70	666	450	72	69	591
Project use	81	0	0	81	82	0	0	82
Subtotal	616	61	70	747	532	72	69	673
Interproject sales	0	0	4	4	0	0	5	5
Total	616	61	74	751	532	72	74	678

¹ Customer count includes 33 Utah Associated Municipal Power System members (30 municipalities and 3 irrigation districts).

Comparison of Cumulative 2004 and 2005 Repayment As of September 30, 2004 and 2005 (in millions of dollars)

Project power system	Gross Operating Revenues				Income Transfers (net)				O & M and Other Expenses			
	Cum 04	Adjustments	FY 05	Cum 05	Cum 04	Adjustments	FY 05	Cum 05	Cum 04	Adjustments	FY 05	Cum 05
Amistad-Falcon	95	0	5	100	0	0	0	0	30	0	2	32
Boulder Canyon	1,460	0	71	1,531	8	(0)*	1	9	726	(6)	46	765
Central Arizona (Navajo)	1,979	0	119	2,099	(1,138)	(1)	(119)	(1,258)	843	(2)	0*	841
Central Valley	5,565	23	248	5,836	0*	0	0	0	963	0	76	1,039
Collbran	46	0	2	48	0	0	0	0	20	0	1	21
Colorado River Storage	3,702	(4)	156	3,853	0	0	(3)	(3)	1,147	0	59	1,206
Dolores	29	0	3	31	0	0	0	0	3	0	0*	4
Fryingpan-Arkansas	234	0	18	252	0	(0)*	0*	0	65	0	5	70
Intertie	241	0	24	265	0	0	(1)	(1)	92	0	6	97
Parker-Davis	1,027	0	46	1,073	8	0	5	13	536	0	28	564
Pick-Sloan Missouri Basin Program	6,952	0*	377	7,329	2	0	(4)	(2)	2,953	(3)	149	3,099
Provo River	8	0	0*	8	0	0	0	0	5	0	0*	5
Rio Grande	84	0	2	86	0	0	0	0	45	0	2	47
Seedskaadee	23	0	1	24	0	0	0	0	10	0	1	10
Washoe	3	0*	0*	4	0	0	0	0	3	(0)*	0*	3
Total	21,449	19	1,072	22,540	(1,120)	(1)	(121)	(1,242)	7,440	(10)	374	7,804

* Less than 500,000

Application of FY 2005 Revenue As of September 30, 2004 and 2005 (in millions of dollars)

Project power system	Principal Repaid				Power Investment				Nonpower Investment			
	Cum 04	Adjustments	FY 05	Cum 05	Cum 04	Adjustments	FY 05	Cum 05	Cum 04	Adjustments	FY 05	Cum 05
Amistad-Falcon	14	0	0*	15	44	0	1	45	0	0	0	0
Boulder Canyon	301	4	6	311	554	4	3	561	25	0	0	25
Central Arizona (Navajo)	0	0	0	0	0	0	0	0	0	0	0	0
Central Valley	439	0*	5	444	559	0	7	566	81	0	3	83
Collbran	14	0	1	15	16	0	0*	16	5	0	0	5
Colorado River Storage	705	(4)	0*	701	1,101	0	3	1,104	1,502	0	1	1,503
Dolores	3	0	0*	3	36	0	(0)*	36	0	0	0	0
Fryingpan-Arkansas	12	0	2	14	153	0	1	154	0	0	0	0
Intertie	2	(0)*	0	2	233	0	1	233	0	0	0	0
Parker-Davis	230	0	2	232	394	0	5	399	34	0	0*	35
Pick-Sloan Missouri Basin Program	1,207	0*	0*	1,207	2,442	9	102	2,552	726	1	0	727
Provo River	2	0	0*	2	2	0	0	2	0*	0	0	0*
Rio Grande	20	0	0*	20	14	0	1	16	6	0	0	6
Seedskaadee	7	0	1	8	8	0	0	8	0	0	0	0
Washoe	0	0	0	0	5	0	0	5	0	0	0	0
Total	2,955	1	17	2,973	5,559	13	125	5,696	2,379	1	4	2,384

* Less than 500,000

Purchased Power Expenses				Interest Expenses				Principal Repaid				(Deficits)/Surplus			
Cum 04	Adjustments	FY 05	Cum 05	Cum 04	Adjustments	FY 05	Cum 05	Cum 04	Adjustments	FY 05	Cum 05	Cum 04	Adjustments	FY 05	Cum 05
0	0	0	0	52	0	2	54	14	0	0*	15	(1)	0	1	(0)*
11	0	0	11	426	0*	18	444	301	4	6	311	0	0	0	0
0	0	0	0	0*	(0)	0	0*	0	0	0	0	(1)	1	0	0
3,787	19	167	3,973	377	3	1	381	439	0*	5	444	0	0	0	0
0	0	0	0	12	0	0*	12	14	0	1	15	0	0	0	0
1,104	0	73	1,177	746	0	21	767	705	(4)	0*	701	0	0	(1)	(1)
0	0	0	0	22	0	2	24	3	0	0*	3	0	0	0	0
54	0	6	60	104	0*	4	109	12	0	2	14	(1)	(0)*	1	0
1	0	0*	1	200	0	20	220	2	(0)*	0	2	(53)	0*	(3)	(56)
30	0	9	38	214	0	15	229	230	0	2	232	25	0	(2)	23
1,397	0	283	1,680	1,621	4	83	1,708	1,207	0*	0*	1,207	(224)	(1)	(141)	(367)
0	0	0	0	1	0	0*	1	2	0	0*	2	0*	0	(0)*	0*
5	0	0	5	14	0	(0)*	14	20	0	0*	20	0*	0	(0)*	0
0	0	0	0	6	0	0*	6	7	0	1	8	0	0	0*	0*
0	0	0	0	4	0*	0*	4	0	0	0	0	(4)	(0)	(0)*	(4)
6,389	19	537	6,945	3,799	7	167	3,974	2,955	1	17	2,973	(258)	(1)	(146)	(405)

Total Investment				Unpaid Power Investment				Unpaid Nonpower Investment				Total Unpaid Investment			
Cum 04	Adjustments	FY 05	Cum 05	Cum 04	Adjustments	FY 05	Cum 05	Cum 04	Adjustments	FY 05	Cum 05	Cum 04	Adjustments	FY 05	Cum 05
44	0	1	45	30	0	0*	30	0	0	0	0	30	0	0*	30
579	4	3	586	253	0	(3)	250	25	0	0	25	278	0	(3)	275
0	0	0	0	0	0	0	0	0	0	0	0	0	0	0	0
639	0	10	649	120	0	2	122	81	0	3	83	200	0	5	205
21	0	0*	21	2	0	(1)	1	5	0	0	5	7	0	(1)	6
2,603	0	4	2,607	396	4	3	403	1,502	0	1	1,503	1,898	4	4	1,906
36	0	(0)*	36	33	0	(0)*	33	0	0	0	0	33	0	(0)*	33
153	0	1	154	141	0	(1)	140	0	0	0	0	141	0	(1)	140
233	0	1	233	231	0*	1	231	0	0	0	0	231	0	1	231
429	0	5	434	192	0	3	196	6	0	0*	7	199	0	4	202
3,167	10	102	3,279	1,241	9	102	1,352	719	1	0	720	1,960	10	102	2,072
2	0	0	2	0*	0	(0)*	0	0	0	0	0	0*	0	(0)*	0*
20	0	1	21	0	0	1	1	0	0	0	0	0	0	1	1
8	0	0	8	1	0	(1)	0	0	0	0	0	1	0	(1)	0
5	0	0	5	5	0	0	5	0	0	0	0	5	0	0	5
7,937	14	129	8,080	2,644	13	107	2,764	2,338	1	4	2,343	4,982	14	111	5,107

Western Consolidated Status of Repayment (Dollars in millions)

	Cumulative 2004	Adjustments	Annual 2005	Cumulative 2005
Revenue:				
Gross operating revenue	21,449	19	1,072	22,540
Income transfers (net)	(1,120)	(1)	(120)	(1,241)
Total operating revenue	20,329	18	952	21,299
Expenses:				
O & M and other	7,440	(10)	374	7,804
Purchase power and other	6,389	19	537	6,945
Interest				
Federally financed	3,618	7	155	3,780
Non-Federally financed	181	0	12	193
Total interest	3,799	7	167	3,973
Total expense	17,628	16	1,078	18,722
(Deficit)/surplus revenue	(258)	(1)	(146)	(405)
Investment:				
Federally financed power	5,357	13	125	5,495
Non-Federally financed power	202	0	0	202
Nonpower	2,379	1	4	2,384
Total investment	7,938	14	129	8,081
Investment repaid:				
Federally financed power	2,856	1	13	2,870
Non-Federally financed power	59	0	4	63
Nonpower	41	0	0	41
Total investment repaid	2,956	1	17	2,974
Investment unpaid:				
Federally financed power	2,501	13	111	2,625
Non-Federally financed power	143	0	(4)	139
Nonpower	2,338	1	4	2,343
Total investment unpaid	4,982	14	111	5,107
Fund balances:				
Colorado River Development	3	1	2	6
Working capital	2	0	0	2
Percent of investment repaid to date:				
Federal	53.31%			52.23%
Non-Federal	29.21%			31.19%
Nonpower	1.72%			1.72%

Note: Repayment status is based on audited data as of Sept. 30, 2005. Difference between the 2005 data in this table and the Combined Power System Statements of Revenues and Expenses in the Annual Report are footnoted in the individual power system Status of Repayment tables in Western's Statistical Appendix.

Marketing Plan Summary

Project	Expiration Date
Boulder Canyon	Sept. 30, 2017
Central Arizona	Sept. 30, 2011
Central Valley ¹	Dec. 31, 2024
Falcon-Amistad	June 8, 2033
Loveland Area Projects	Sept. 30, 2024
Parker-Davis	Sept. 30, 2008
Pick-Sloan Missouri Basin Program - Eastern Division	Dec. 31, 2020
Provo River	Sept. 30, 2024
Salt Lake City Area Integrated Projects	Sept. 30, 2024
Washoe Project	Dec. 31, 2024

¹ The 2004 Central Valley Project Power Marketing Plan, effective 1/1/2005, does not offer the same type of power service that is available under the 1994 Power Marketing Plan. Under the 1994 Power Marketing Plan, a contract rate of delivery allocates an amount of capacity with associated energy to each preference customer, and the customer can take up to that amount of capacity in any hour. CV-F10 provides for energy and capacity rates. Under the 2004 Power Marketing Plan, the base resource and first preference power is primarily hydrogeneration available subject to water conditions and operating constraints. Customers can request Western to purchase power to meet their load. This purchased power (custom product power) may include long- and short-term purchases at various rates. There are no provisions for energy and capacity rates under CV-F11. CV-F11 provides for a Power Revenue Requirement allocation to all preference customers.

Rate Actions Summary

Rate order no.	Project	Type of rate action	Date of notice of public participation	Rate schedule designation	Effective date of rate (first day of first full billing period)	Projected annual incremental \$(000)	Notes	Date submitted to FERC	Date of FERC confirmation
WAPA-115	Central Valley, California-Oregon Transmission, Pacific AC Intertie	Power, Transmission and Ancillary Services Rate Change	5/7/04	CV-F11, CPP-1, CV-T1, CV-NWT3, COTP-T1, PACI-T1, CV-TPT6, CV-SPR3, CV-SUR3, CV-RFS3, CV-EID3	1/1/05	N/A	Base Resource and First Preference Power, Custom Product Power, Firm and Nonfirm CVP Transmission, Network Integration Transmission Service, California-Oregon Transmission Project Firm and Nonfirm Transmission Service, Pacific AC Intertie Project, Transmission of Western Power by others, Spinning Reserve Service, Nonspinning Reserve Service, Regulation and Frequency Response Service, Energy Imbalance Service	11/18/04	
WAPA-116	Provo	Extension	N/A	N/A	4/1/05	N/A	Rate formula extension through 3/31/10	12/1/04	

Summary of Current Wholesale Rate Schedule Provisions

Project	Rate schedule designation	Monthly Rate		Effective date	Annual composite rate
		Capacity charge \$/kW of billing demand	Energy charge not in excess of delivery obligations (mills/kWh)		
Boulder Canyon Project	BCP-F6	\$1.39	7.41 mills/kWh	10/1/04	14.82 mills/kWh
Central Arizona Project	CAP-FT1 CAP-NFT1 CAP-NITS1	\$9.83 kW/Year 1.12 mills/kWh Customer load ratio share x 1/12 annual revenue requirement. No Network Integration Service provided on CAP in FY 2005			
Central Valley Project (Oct - Dec 2004)	CV-F10	\$3.80	24.97	10/1/04	30.83 mills/kWh
Central Valley Project (Jan-Sep 2005)	CV-F11	N/A	N/A	1/1/05	\$32,650,000 power revenue requirement
Loveland Area Projects	L-F4	\$2.85	10.85 mills/kWh	10/1/94	21.70 mills/kWh
Loveland Area Projects	L-F5 (1st step)	\$3.08	11.72 mills/kWh	2/1/04	23.44 mills/kWh
Loveland Area Projects	L-F5 (2nd step)	\$3.14	11.95 mills/kWh	10/1/04	23.90 mills/kWh
Parker-Davis Project	PD-F6	1.22-Generation 1.08-Transmission	2.78 mills/kWh	10/1/04	5.56 mills/kWh
Pick-Sloan Missouri Basin Program	P-SED-F6	\$3.20	8.32 mills/kWh for all energy 3.38 mills/kWh for all energy above 60% load factor	10/1/94	14.23 mills/kWh
	P-SED-F7 (FY 2004)	\$3.62	9.34 mills/kWh for all energy 3.38 mills/k/wh for all energy above 60% load factor	2/1/04	16.04 mills/k/wh
	P-SED-F7 (FY 2005)	\$3.72	9.62 mills/kWh for all energy 5.21 mills/kWh for all energy above 60% load factor	10/1/04	16.51 mills/kWh
Salt Lake City Area Integrated Projects	SLIP-F7	\$4.04	9.50 mills/kWh	10/1/02	20.72 mills/kWh
Washoe	SNF-5	None	Formula rate Floor: 17.89 mills/kWh Ceiling: 90.07 mills/kWh	10/1/04	N/A

Custom Product Power

Project	Rate schedule designation	Monthly Rate		Effective date	Annual composite rate
		Capacity charge \$/kW of billing demand	Energy charge not in excess of delivery obligations (mills/kWh)		
Central Valley Project (Jan - Sep 2005)	CPP-1	N/A	N/A	1/1/05	Pass-through

Transmission and Ancillary Rate Provisions

Project	Rate schedule designation	Rate
Central Valley Project^{1,2}	CV-FT4, Firm Transmission Service (Oct - Dec 2004)	\$0.57 kW-mo
	CV-T1, Transmission Service (Jan - Sep 2005)	\$1.11 kW/mo
	CV-NFT4, Nonfirm Transmission Service (Oct - Dec 2004)	1 mill/kWh
	CV-T1, Transmission Service (Jan - Sep 2005)	1.5 mills/kWh
	CV-TPT5, Third Party Transmission (Oct - Dec 2004)	Pass through
	CV-TPT6, Third Party Transmission (Jan - Sep 2005)	Pass-through
	CV-SPR2, Spinning Reserve Service (Oct - Dec 2004)	\$2.946 kW/mo.
	CV-SPR3, Spinning Reserve (Jan - Sep 2005)	Formula rate
	CV-SUR2, Supplemental Reserve Service (Oct - Dec 2004)	\$2.491 kW/mo.
	CV-SUR3, Nonspinning Reserve Service (Jan - Sep 2005)	Formula rate
	CV-RFS2, Regulation and Frequency Response Service (Oct - Dec 2004)	\$2.496 kW/mo.
	CV-RFS3, Regulation and Frequency Response Service (Jan - Sep 2005)	\$2.83 kW/mo
	CV-NWT2, Network Transmission Service (Oct - Dec 2004)	Formula rate
	CV-NWT3, Network Transmission Service (Jan - Sep 2005)	Formula rate
	COTP-FT2, Firm Transmission (Oct - Dec 2004)	Formula rate
	COTP-T1, Transmission Service (Jan - Sep 2005)	Formula rate
	COTP-NFT2, Nonfirm Transmission Service (Oct - Dec 2004)	Formula rate
	PACI-T1, Transmission Service (Jan - Sep 2005)	Formula rate
	CV-EID2, Energy Imbalance Service (Oct - Dec 2004)	<p>Within deviation band: Accumulated deviations (in MW units) are to be corrected or eliminated within 30 days. Any net deviations accumulated at the end of the month (positive or negative) are to be exchanged with like hours of energy or charged at the effective composite CVP firm power rate.</p> <p>Outside deviation band: (i) Positive deviation — the greater of no charge, or any additional cost incurred. (ii) Negative deviation — during on-peak hours, the greater of three times the rate for CVP firm power or any additional cost incurred. During off-peak hours, the greater of the rate for CVP firm power or any additional cost incurred.</p>
	CV-EID3, Energy Imbalance Service (Jan - Sep 2005)	Formula rate
CV-SCS1, Scheduling Coordinator Service (Oct - Dec 2004)	\$76.65/hr	
CV-PSS2, Power Scheduling Service (Oct - Dec 2004)	\$76.65/hr	
Loveland Area Projects	L-NT1, Network Integration Transmission Service	Load ratio share of 1/12 of the revenue requirement of \$37,982,534
	L-FPT1, Firm Transmission Service	\$2.79/kW-month
	L-NFPT1, Nonfirm Transmission Service	3.75 mills/kWh (Maximum)
	L-AS1, Scheduling, System Control and Dispatch Service	\$24.95/tag/day
	L-AS2, Reactive Supply and Voltage Control from Generation Sources Service	\$0.124/kW/month
	L-AS3, Regulation and Frequency Response Service	\$0.197/kW/month
	L-AS4, Energy Imbalance Service	10% bandwidth, 4 MW minimum, 25% penalty, LAP weighted average hourly purchase or sales price.
	L-AS5, Operating Reserve - Spinning Reserve Service	Pass-through cost
L-AS6, Operating Reserve - Supplemental Reserve Service	Pass-through cost	

Transmission and Ancillary Rate Provisions, continued

Project	Rate schedule designation	Rate
Pacific NW-SW Intertie	INT-FT3, firm point-to-point transmission; 230/345 kV transmission system	\$12 per kW per year (\$1 per kW per month)
	INT-FT3, short-term firm point-to-point transmission; 230/345-kV transmission system	Yearly: \$12 per kW, Monthly: \$1 per kW, Weekly: \$0.23 per kW, Daily: \$0.03 per kW, Hourly: \$0.00137 per kWh
	INT-NTS1, network transmission service	Customer's load ratio share times 1/12 of the total net annual transmission revenue requirement.
	DSW-SD1, Scheduling, System Control & Dispatch Ancillary Service ³	per schedule/per day
	Existing, No SCADA programing or intra-bus transfer ³	\$53.82
	Existing, No SCADA programing, requires intra-bus transfer ³	\$71.18
	New schedule w/SCADA programing, no inter-bus transfer ³	\$49.84
	New schedule w/SCADA, and inter-bus transfer ³	\$73.38
	DSW-RS1, Reactive Supply and Voltage Control Ancillary Service ³	\$0.05/kW-mo
	DSW-EI1, Energy Imbalance Ancillary Service ³	100 mills penalty may be charged
	DSW-FR1, Regulation & Frequency Response Ancillary Service ³	If available, equal to capacity charge of project.
	DSW-SPR1, Spinning & Supplemental Reserve Ancillary Service ³	None available on long-term basis; Market price if available on non-firm basis; or procurement cost plus 10% administrative charge.
	DSW-SUR1, Supplemental Reserve Ancillary Service ³	None available on long-term basis; Market price if available on non-firm basis; or procurement cost plus 10% administrative charge.
Parker-Davis Project	PD-FT6, Firm Transmission Service	\$12.96 per kW year (\$1.08 per kW per month)
	PD-NFT6, Nonfirm Transmission Service	2.47 mills per kWh
	PD-FCT6, Transmission Service SLCA/IP	\$6.48 per kW per year - summer, \$6.48 per kW per year - winter
Pick-Sloan Missouri Basin Program		
10/1/04 -4/30/05	Integrated System Network Transmission Rate	Load Ratio Share of Annual Revenue Requirements of \$128,017,923
	Integrated System Firm Point-to-Point Rate	\$2.72/KW/Mo
	Integrated System Nonfirm Point-to-Point Rate	3.73 mills/kWh
	Regulation and Frequency Reponse Service	\$0.04KW/Mo
	Operating Reserve - Spinning Reserve Service	\$0.11/KW/Mo
	Operating Reserve - Supplemental Reserve Service	\$0.11/KW/Mo
	Scheduling, System Control and Dispatch Service	\$49.29/Schedule/Day
Reactive Supply & Voltage Control Service	\$0.06/KW/Mo	
5/1/05 -9/30/05	Integrated System Network Transmission Rate	Load Ratio Share of Annual Revenue Requirements of \$131,858,928
	Integrated System Firm Point-to-Point Rate	\$2.77/KW/Mo
	Integrated System Nonfirm Point-to-Point Rate	3.79 mills/kWh
	Regulation and Frequency Reponse Service	\$0.04KW/Mo
	Operating Reserve - Spinning Reserve Service	\$0.11/KW-Mo
	Operating Reserve - Supplemental Reserve Service	\$0.11/KW-Mo
	Scheduling, System Control and Dispatch Service	\$48.85/Schedule/Day
Reactive Supply & Voltage Control Service	\$0.05/KW/Mo	

Transmission and Ancillary Rate Provisions, continued

Project	Rate schedule designation	Rate
Salt Lake City Area Integrated Projects	SP-PTP6, Firm Point-to-Point Transmission Service	\$2.33 per kW per month.
	SP-NW2, Network Integration Transmission Service	Network customer's load ratio share times 1/12 total test year net annual revenue requirement.
	SP-NFT5, Nonfirm Point-to-Point Transmission Service	Mutually agreed by Western and purchasing entity up to 2.82 mills/kWh.
	SP-SD2, Scheduling System Control & Dispatch Service	Included in transmission rate. RM and DSW rate schedules apply for non-transmission, accordingly.
	SP-RS2, Reactive & Voltage Control Service	RMR and DSW rate schedules apply accordingly.
	SP-EI2, Energy Imbalance Service	RMR and DSW rate schedules apply accordingly.
	SP-FR2, Regulation & Frequency Response Service	\$4.04 per kW per month if available; or RM and DSW rate schedules apply accordingly.
	SP-SSR2, Spinning and Supplemental Reserves Service	Rate under the Western Systems Power Pool contract.

¹ Annual per unit rates are not applicable under the formula rates.

² Beginning 1/1/2005, scheduling coordinator and portfolio management services costs are recovered through contractual commitments.

³ WALC Ancillary Service — These service charges apply to AC Intertie, Parker-Davis, CRSP and CAP transmission systems for transactions under Western's OATT.