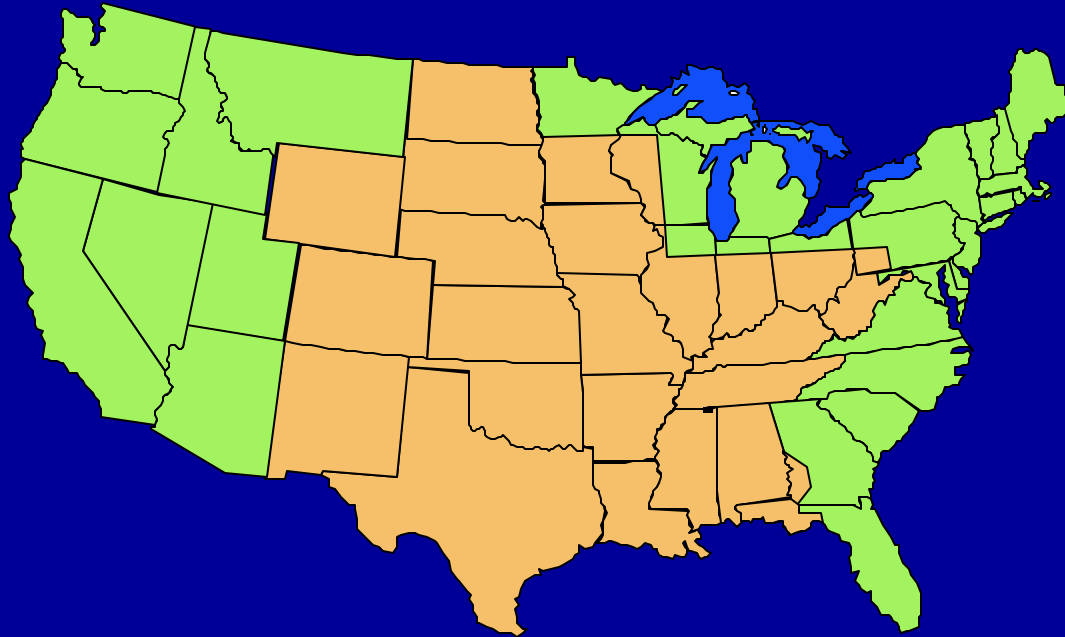


# **U.S. Coast Guard, Eighth District Presentation**

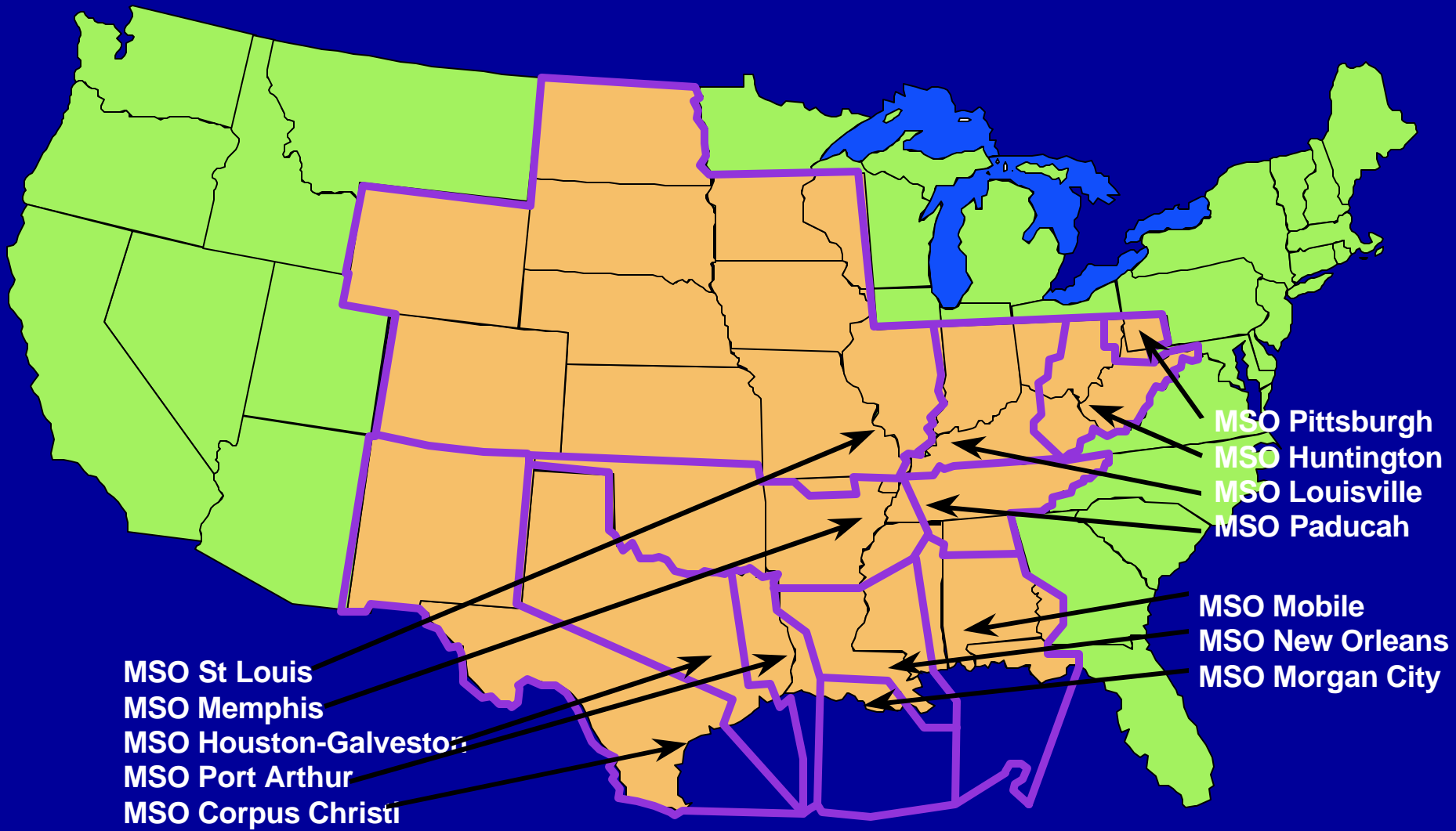
**MMS Gulf of Mexico SAFE  
Awards Houston, TX**

**CAPT Daniel F Ryan II  
11 April 2002**

# Eighth Coast Guard District Personnel



- \* 2,854 Active Duty CG members assigned to district units
- \* 186 Civilian CG Employees in district
- \* 309 Mobilized CG Reservists assigned to district units
- \* 5,977 CG Auxiliary members in 3 regions



# Twelve Marine Safety Offices

# Seven Groups





Aviation Training Center  
Mobile  
3 - HU-25As

Air Station New Orleans  
5 - HH-65As

Air Station  
Houston  
4 - HH-65As

# Three Air Stations (plus 1)

Air Station Corpus Christi  
3 - HU-25A/Ds  
3 - HH-65As



# District Comparison

	<u>Groups</u>	<u>MSOs</u>	<u>AIRSTAs</u>	<u>STAs</u>	<u>Cutters</u>	<u>ANT Teams</u>	<u>AUX Regions</u>	<u>Top 40 Ports</u>
<b>ATLANTIC AREA</b>								
D1	6	5	1	25	28	10	2	2
D5	6	4	2	23	21	9	2	5
D7	5	6	4	20	34	10	1	4
<b>D8</b>	<b>7</b>	<b>12 (4)</b>	<b>3 (1)</b>	<b>15</b>	<b>42</b>	<b>15</b>	<b>3</b>	<b>17</b>
D9	5	8	2	32	10	9	3	5
<b>LANTAREA TOTALS:</b>	<b>29</b>	<b>35</b>	<b>13</b>	<b>115</b>	<b>135</b>	<b>53</b>	<b>11</b>	<b>33</b>
<b>PACIFIC AREA</b>								
D11	4	3	5	13	16	4	2	3
D13	5	2	3	12	15	4	1	3
D14	1	3	1	2	10	1	1	0
D17	0	3	2	2	14	1	1	1
<b>PACAREA TOTALS:</b>	<b>10</b>	<b>11</b>	<b>11</b>	<b>29</b>	<b>55</b>	<b>10</b>	<b>5</b>	<b>7</b>

# Offshore Assets

- **Oil and Natural Gas Production**
- **Louisiana Offshore Oil Port (LOOP)**
- **Lightering Zones**
- **Fishing**
- **Other Marine Resources**

Lightering Zones  
 Prohibited Areas



**Designated  
 Lightering Zones  
 and  
 Prohibited Areas**



**30% of Nation's Crude Oil**



# Offshore Oil Industry



- 6,500 oil & gas wells
- 4,500 platforms
- 172 mobile offshore drilling units
- 340 million barrels crude oil
- 4.7 trillion cu ft natural gas
- 12 deepwater production platforms



# Coastal Facilities

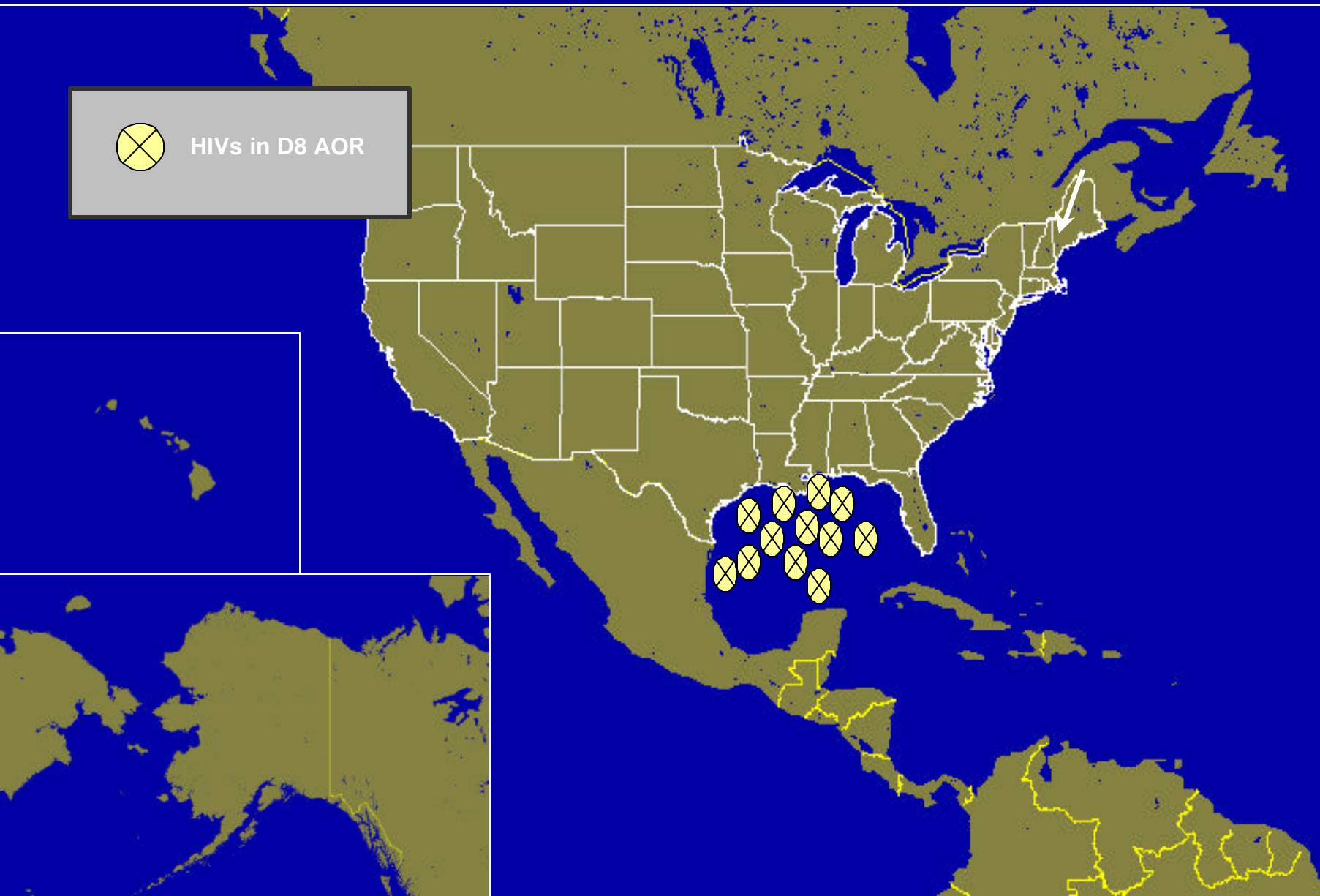
- **Busiest Port in the World – New Orleans**
- **Highest Concentration of Petrochemical Plants**
- **12 of the Top 15 US Ports by Tonnage Handled**
- **2 Strategic Military Ports**
- **Strategic Petroleum Reserve**
- **1200 Miles of ICW**
- **6 MSOs/4 MSUs**
- **4 Groups**

# U.S. Ports Ranked By Cargo Tons Handled Year 2000

➤ Port of South LA	217.7	➤ Mobile	54.1
➤ Houston	191.4	➤ Pittsburgh	53.9
➤ <b>New York, NY/NJ</b>	<b>138.6</b>	➤ <b>Los Angeles</b>	
➤ New Orleans		48.1	
90.7		➤ <b>Valdez</b>	<b>48.0</b>
➤ Corpus Christi	83.1	➤ <b>Tampa</b>	<b>46.4</b>
➤ Beaumont	82.6	➤ <b>Philadelphia</b>	
➤ Huntington	76.8	43.8	
➤ <b>Long Beach</b>		➤ <b>Norfolk</b>	<b>42.3</b>
70.1		➤ <b>Duluth-Superior</b>	<b>41.6</b>
➤ Baton Rouge		➤ <b>Baltimore</b>	<b>40.8</b>
65.6		➤ <b>Portland, OR</b>	
➤ Texas City	61.5	34.3	
➤ Plaquemines		➤ <b>St Louis</b>	<b>33.3</b>
59.9		➤ <b>Freeport, TX</b>	<b>30.9</b>
➤ Lake Charles	55.5		

# Typical Distribution of HIV Arrivals

12 of 21 HIVs to D8 Ports as of 082211Z FEB 02



# Large Petrochemical Plant





# High Density Population Area



# Expanding Cruise Ship Destination





# Western Rivers

- **10,300 Miles of Rivers**
- **6 MSOs**
- **3 Groups**
- **3 of the Top 25 Ports by Tonnage Handled**
- **Approximately 50% of Nations ATON**

# Inland Refinery



# Inland Chemical Plant





# Megatons to Megawatts



# Potential Threats

- **HIVs (Coastal and Inland)**
- **High Density Population Areas**
- **Chemical Industries**
- **Petroleum and LNG Industries**
- **Offshore Production Assets**
- **Passenger Vessels**
- **Strategic Ports of Embarkation**
- **Locks, Dams, Levees, Old River Control Structure, & Choke Points**
- **Symbolic Structures**

# District Unique Concerns

- **Floods, High Water, & Ice**
- **No SAR/LE Capability on Rivers**
- **Major PetroChem Facilities**
- **Inland (ICW & Rivers) Towing Industry (COPH)**
- **391 Tier 1 Assets**

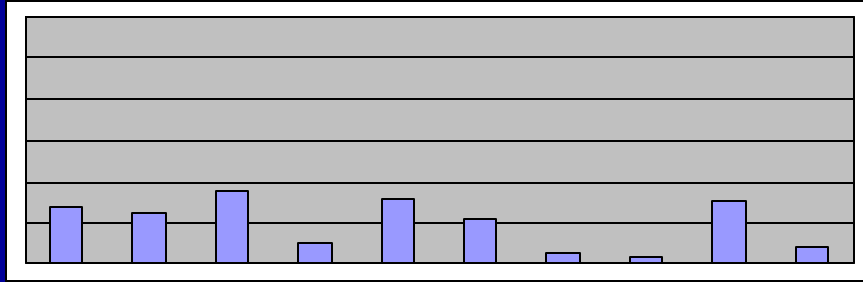
# **“Port Security” Statutory Authorities**

**Long history of providing port security**

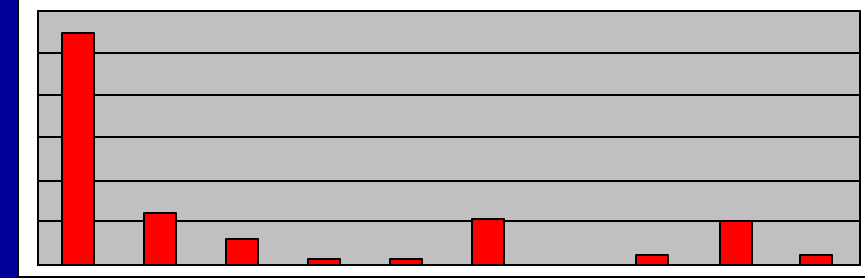
- Espionage Act of 1917**
- Magnuson Act of 1950**
- Ports and Waterways Safety Act  
1972**
- Maritime and Port Security Act of  
1986**

# Relative Mission Resources

September 10, 2001



September 24, 2001



Port Security & Safety  
SA R Counterdrug  
AMO  
Fish Env. Protection  
RB Defense Readiness  
ATO  
Other

Port Security & Safety  
SA R Counterdrug  
AMO  
Fish Env. Protection  
RB Defense Readiness  
ATO  
Other



# Post September 11<sup>th</sup> Actions

- **Training & Re-arming MSOs & Western Rivers Groups**
- **Mobilized Reservists up to 716, now 309**
- **Increased use of the Auxiliary**
- **Increased presence on the waterfront**
- **Major Cutter(s) in GOM**
- **Marine Security & Safety Team**
- **Obtained additional PS/WMD training**
- **Re-defined mission priorities**

- **District Homeland Security Staff established (also G-MP)**
- **Planning & Organization by Sector**
- **CO's Conference to obtain field input**
- **Increased intelligence sharing & liaison**
- **Obtained secure comms**
- **Evaluating staffing, organization, mission priorities**

# Can you assist CG?

- **Articulate the Quality and Importance of CG Effort in Port and Waterways Security to White House and the Hill**
- **Be Aware of the CG Budget, No Cuts Now!**
- **Support for Fast Tracking Rulemaking that May Impact Your “Economics” but Improve Security**
- **Engage District 8 & MSOs to Help Define Your Security Risks and How to Address Them**

# Semper Paratus!

