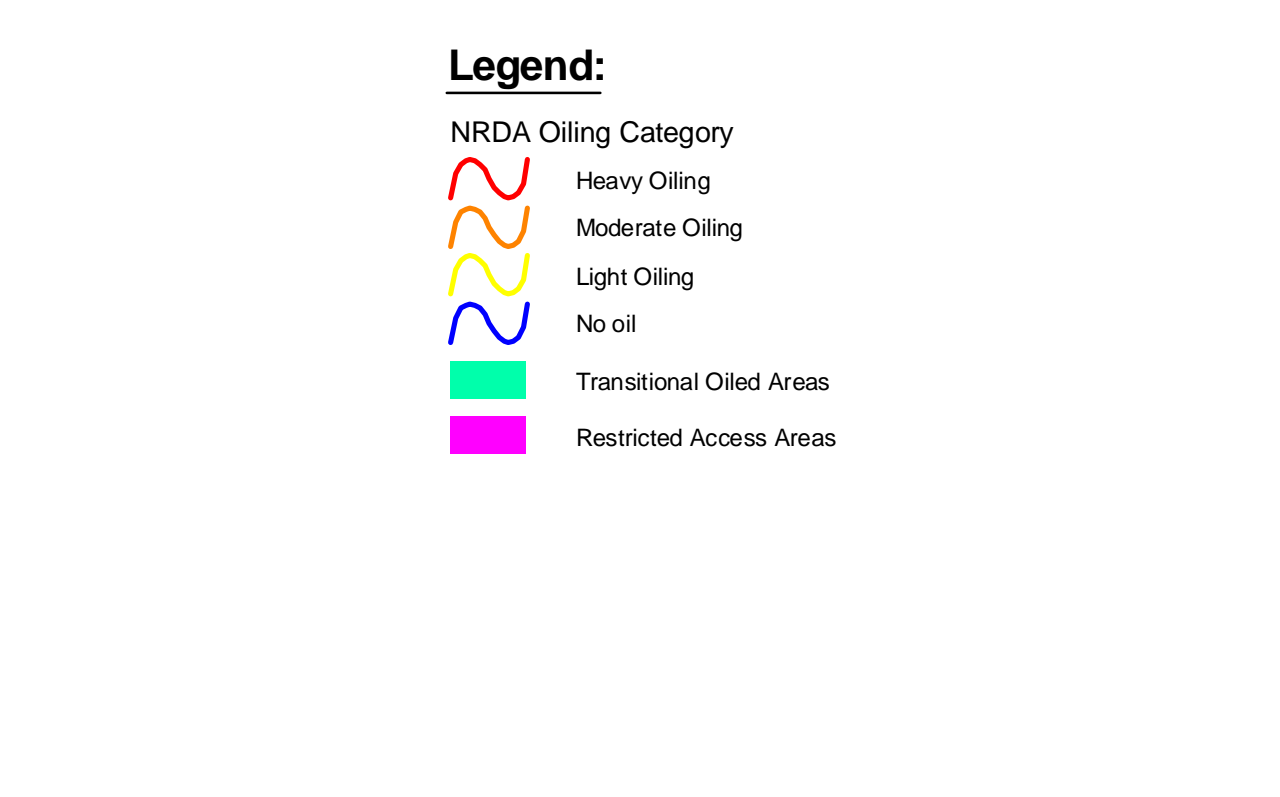
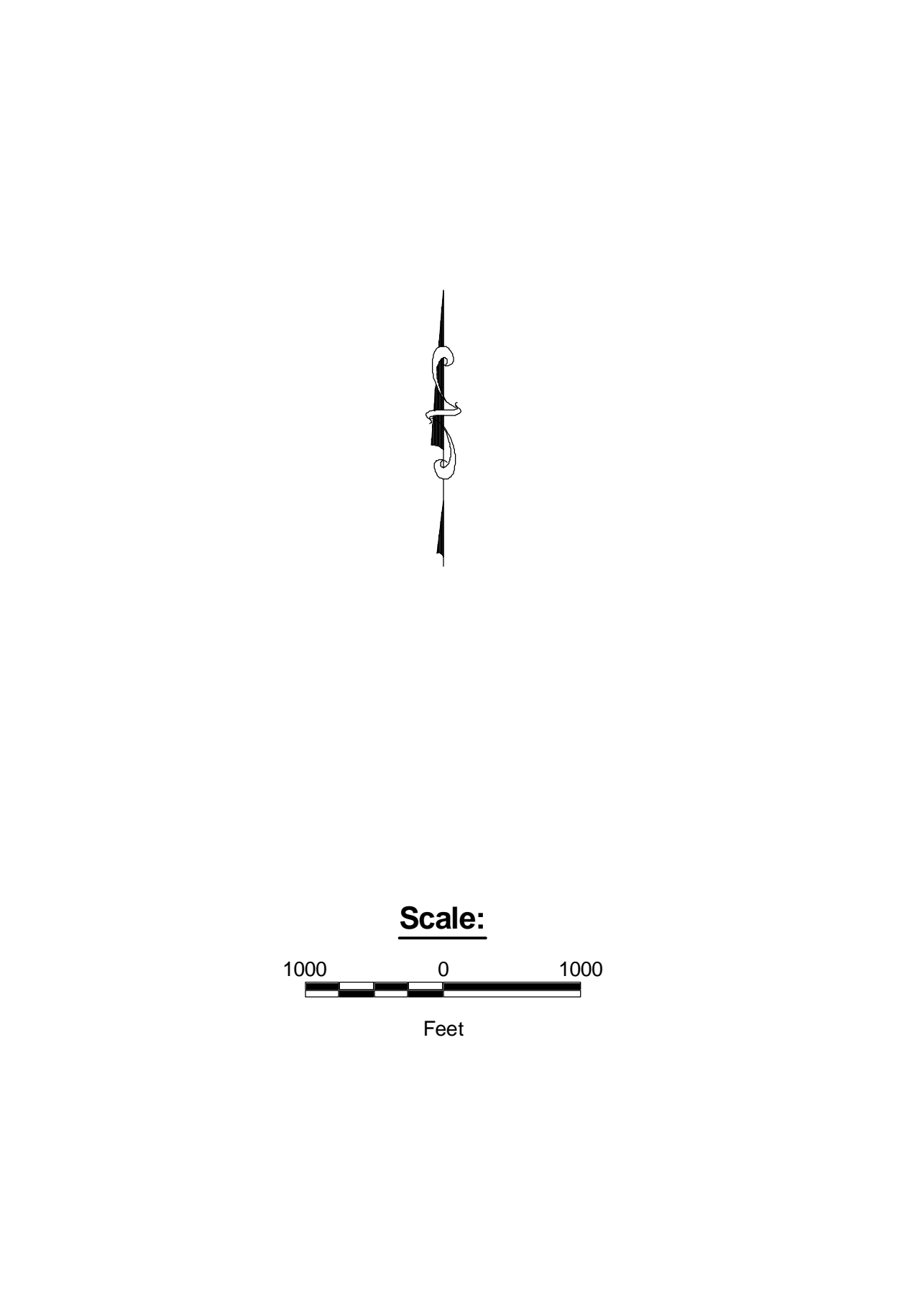
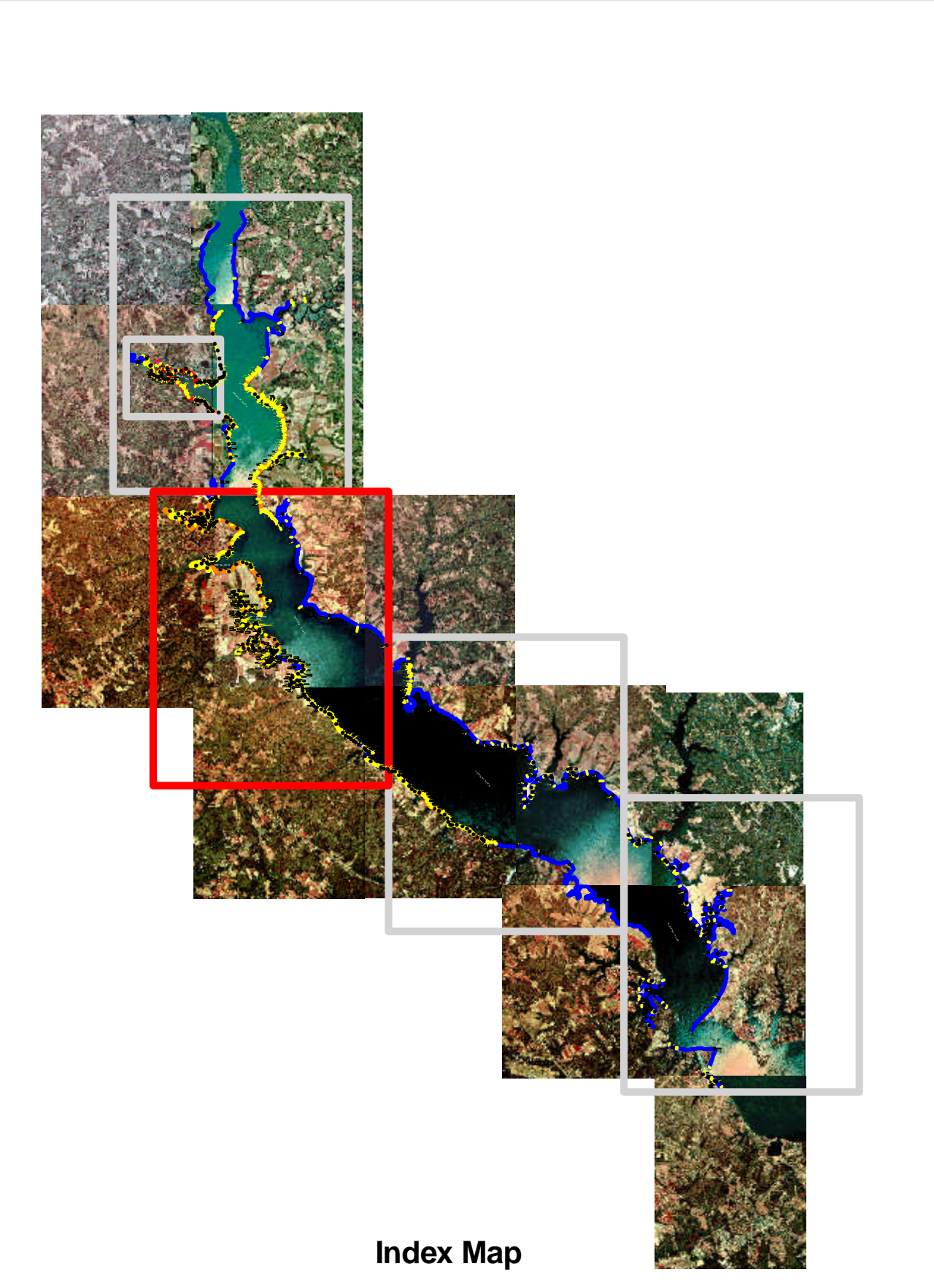
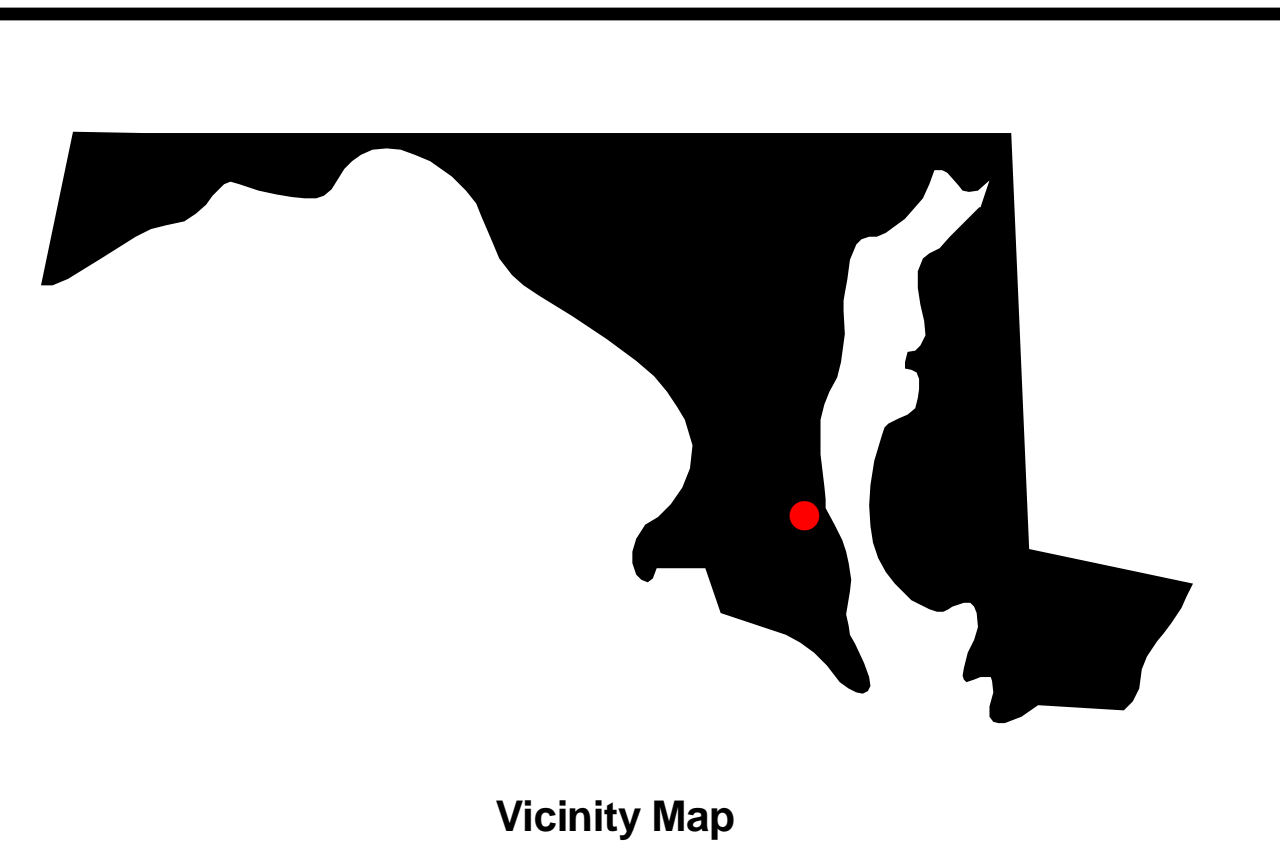
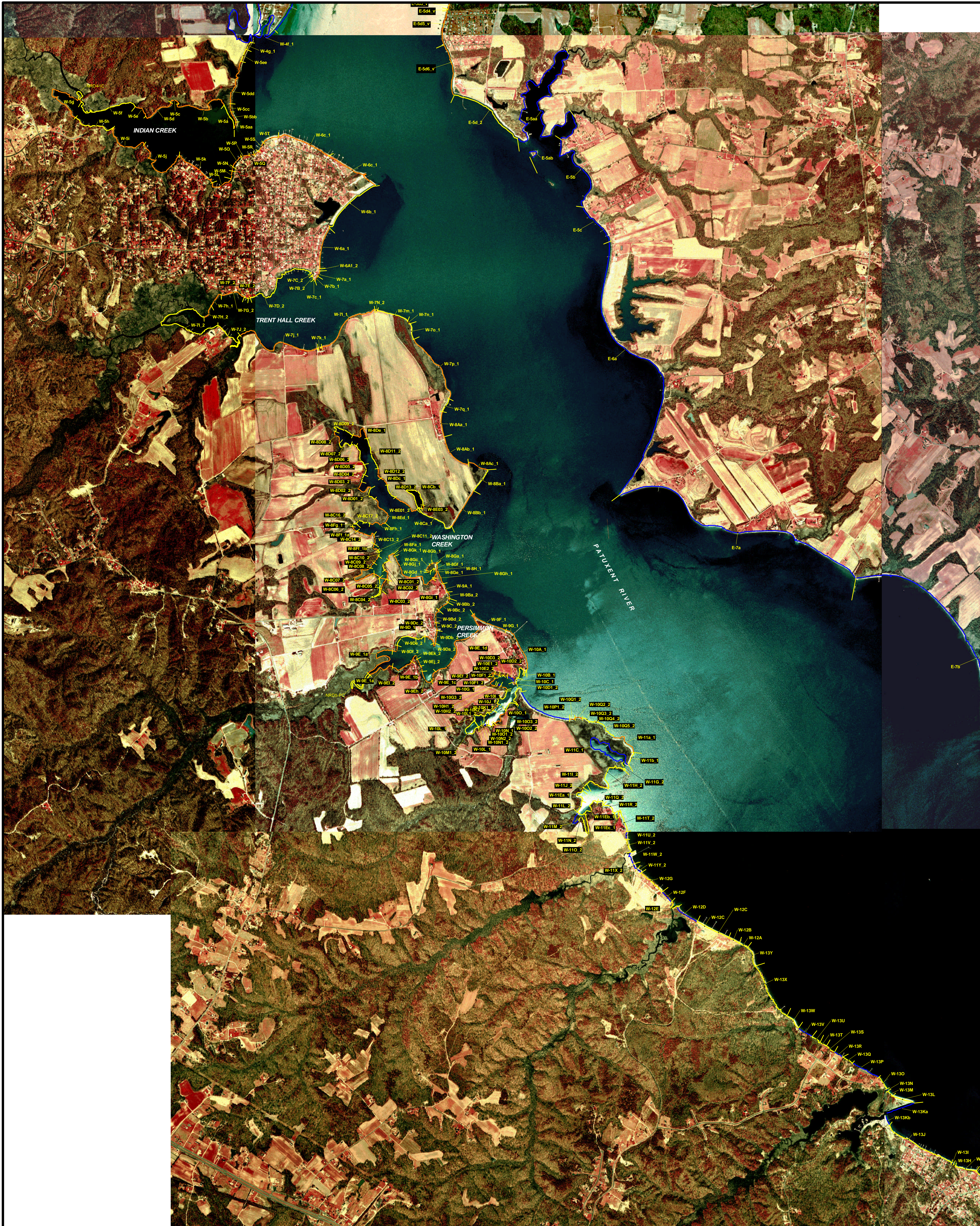


Notes:

1. SCAT data provided by Polaris and ENTRIX on CD-ROM dated 10/25/00.
2. Base image is Digital Ortho Quarter Quadrangles.
3. Line widths shown are for illustrational purposes only and are not scaled to the actual width of the oiled area.

Pepco Chalk Point Power Plant
Swanson Creek Incident
Patuxent River, Maryland

NRDA OILING CLASSIFICATION
MAP 1 OF 5



Notes:

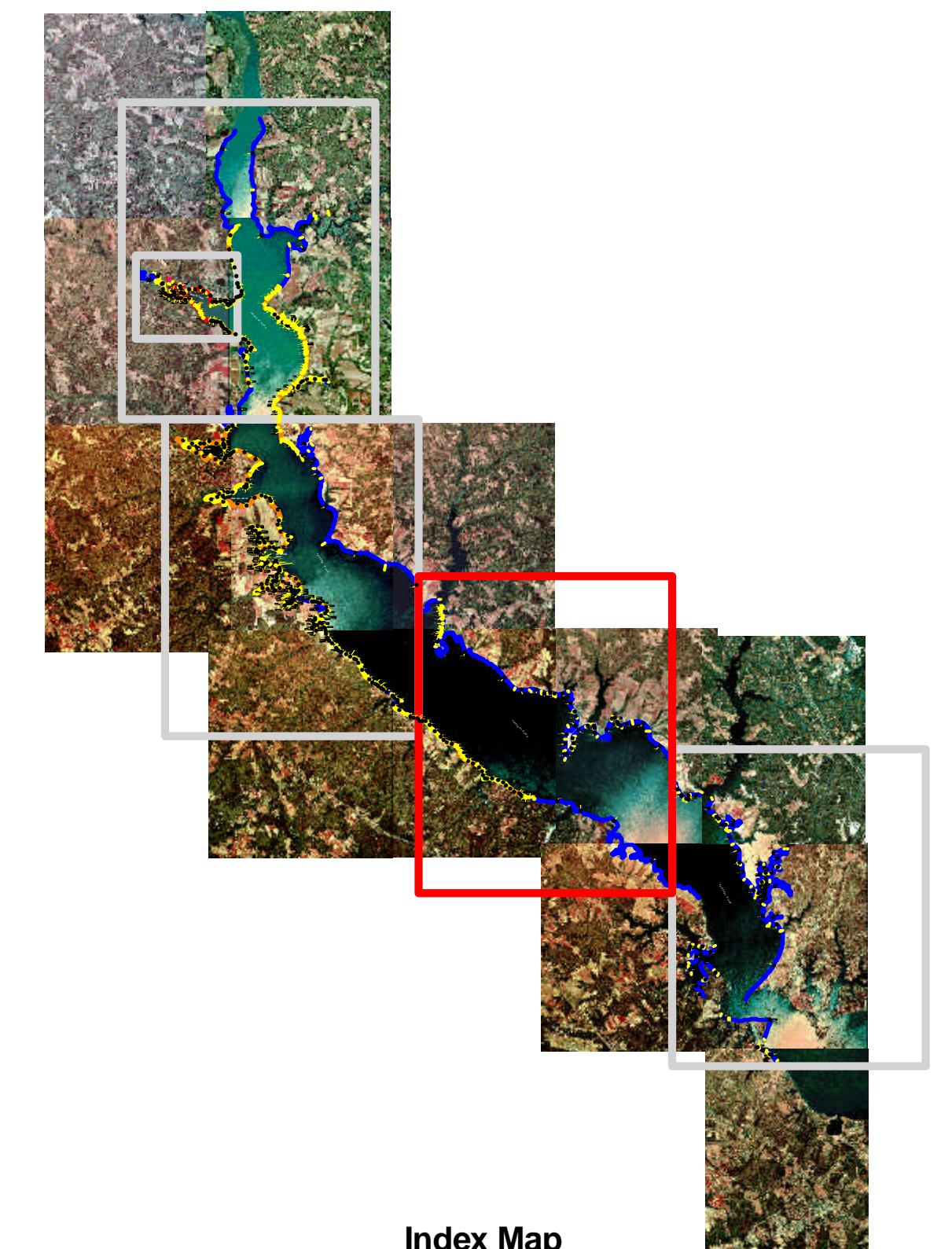
1. SCAT data provided by Polaris and ENTRIX on CD-ROM dated 10/25/00.
2. Base image is Digital Ortho Quarter Quadrangles.
3. Line widths shown are for illustrational purposes only and are not scaled to the actual width of the oiled area.

Pepco Chalk Point Power Plant
Swanson Creek Incident
Patuxent River, Maryland

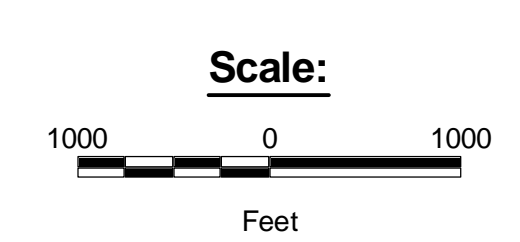
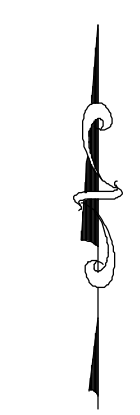
NRDA OILING CLASSIFICATION
MAP 2 OF 5



Vicinity Map



Index Map



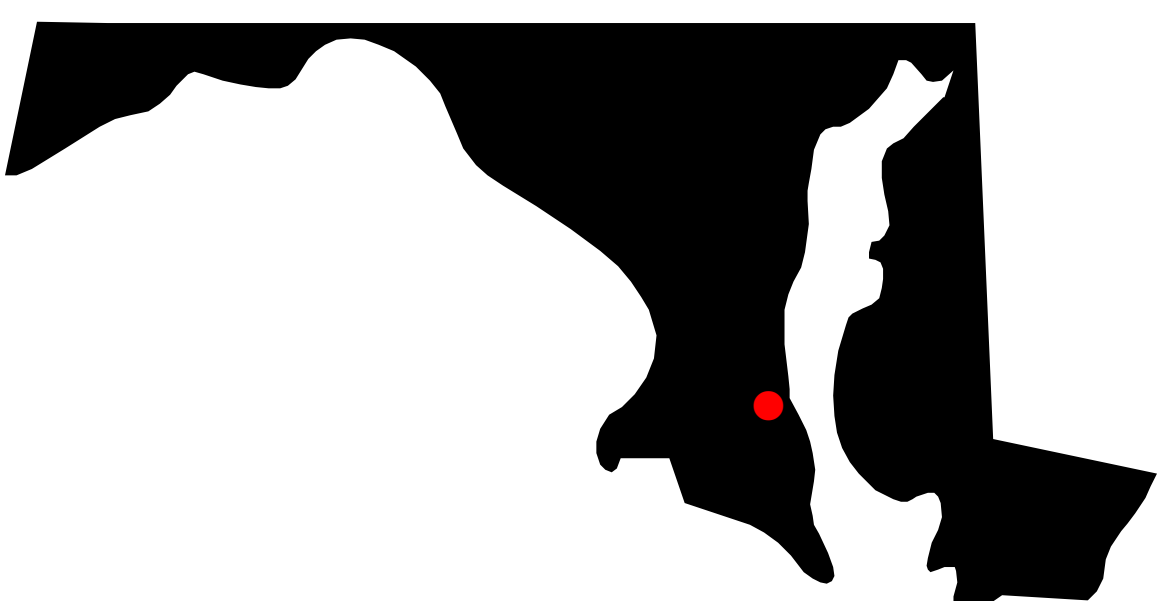
- Legend:**
- NRDA Oiling Category
 - Heavy Oiling
 - Moderate Oiling
 - Light Oiling
 - No oil
 - Transitional Oiled Areas
 - Restricted Access Areas

- Notes:**
1. SCAT data provided by Polaris and ENTRIX on CD-ROM dated 10/25/00.
 2. Base image is Digital Ortho Quarter Quadrangles.
 3. Line widths shown are for illustrational purposes only and are not scaled to the actual width of the oiled area.

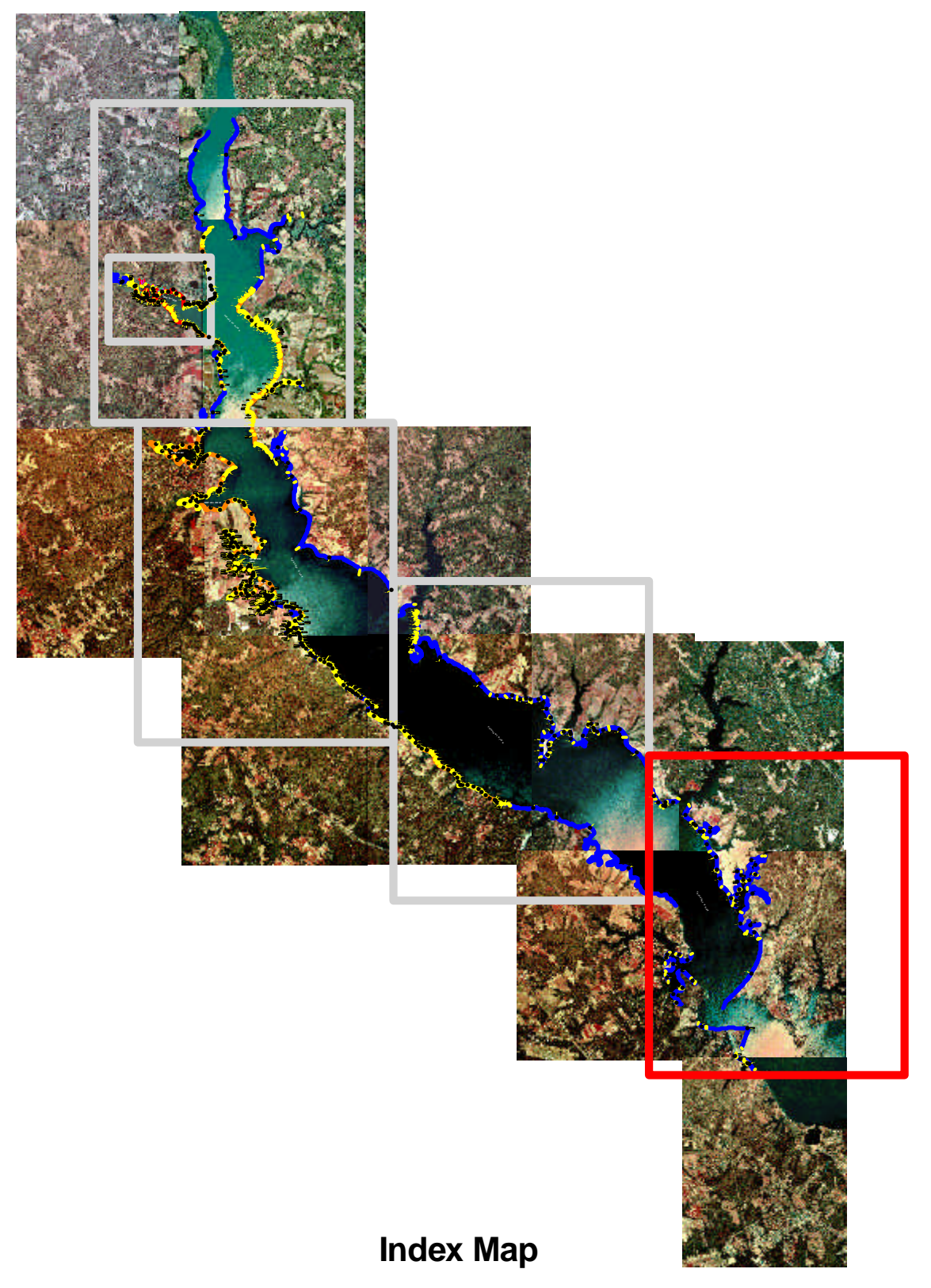
Pepco Chalk Point Power Plant
Swanson Creek Incident
Patuxent River, Maryland

NRDA OILING CLASSIFICATION
MAP 3 OF 5

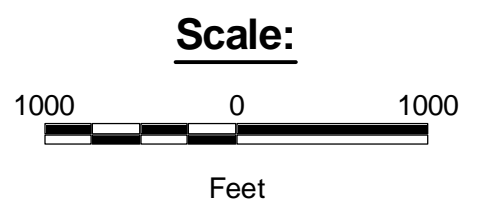
 <small>ENVIRONMENTAL CONSULTANTS</small> 10 CORPORATE CIRCLE NEW CASTLE, DE 19720 (302) 395-1919	 <small>Environmental Science Services, Inc.</small> P.O. Box 84408 Baton Rouge, Louisiana 70884-4408 (225) 927-7171
---	--



Vicinity Map



Index Map

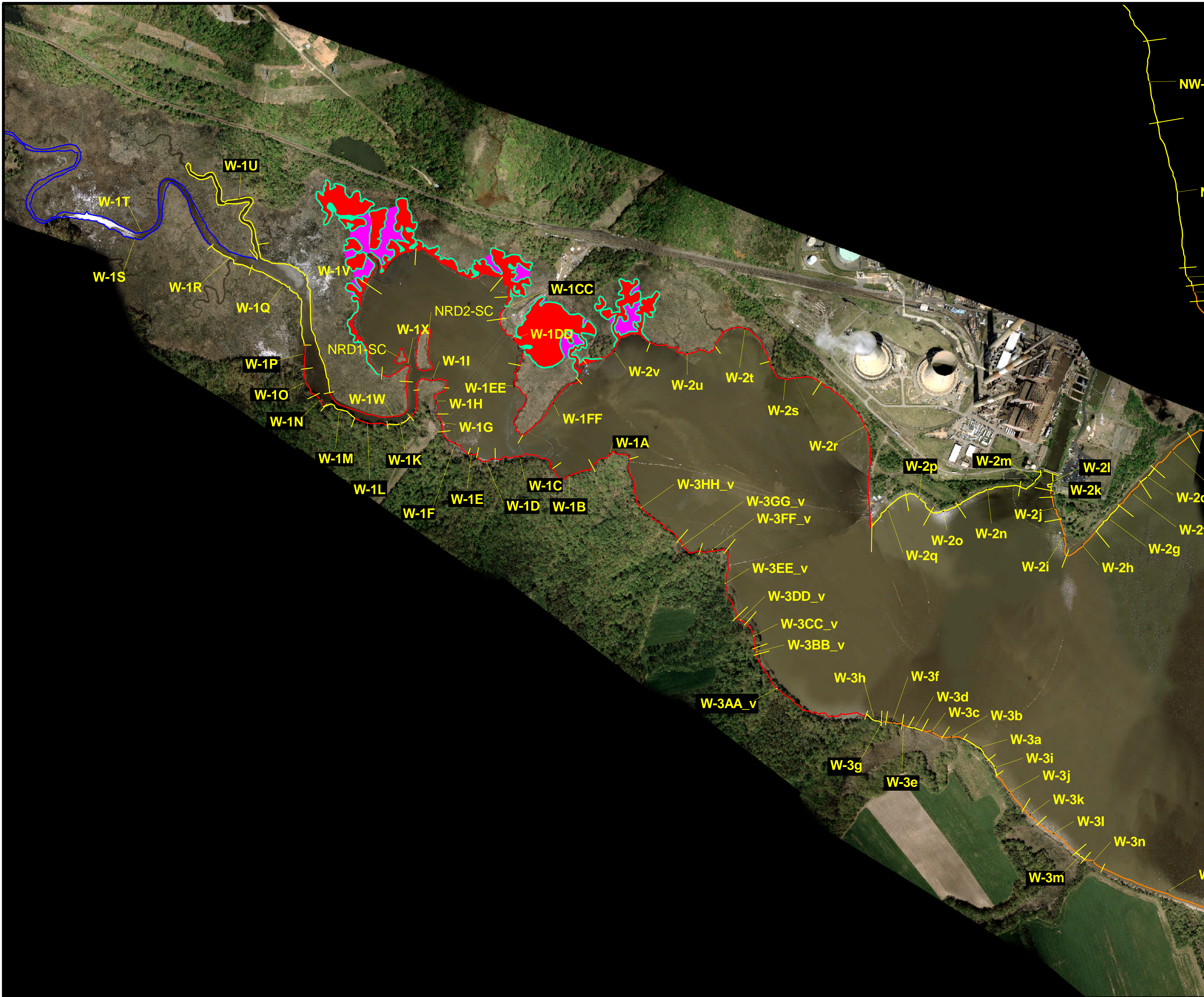


- Legend:**
- NRDA Oiling Category
 - Heavy Oiling
 - Moderate Oiling
 - Light Oiling
 - No Oil
 - Transitional Oiled Areas
 - Restricted Access Areas

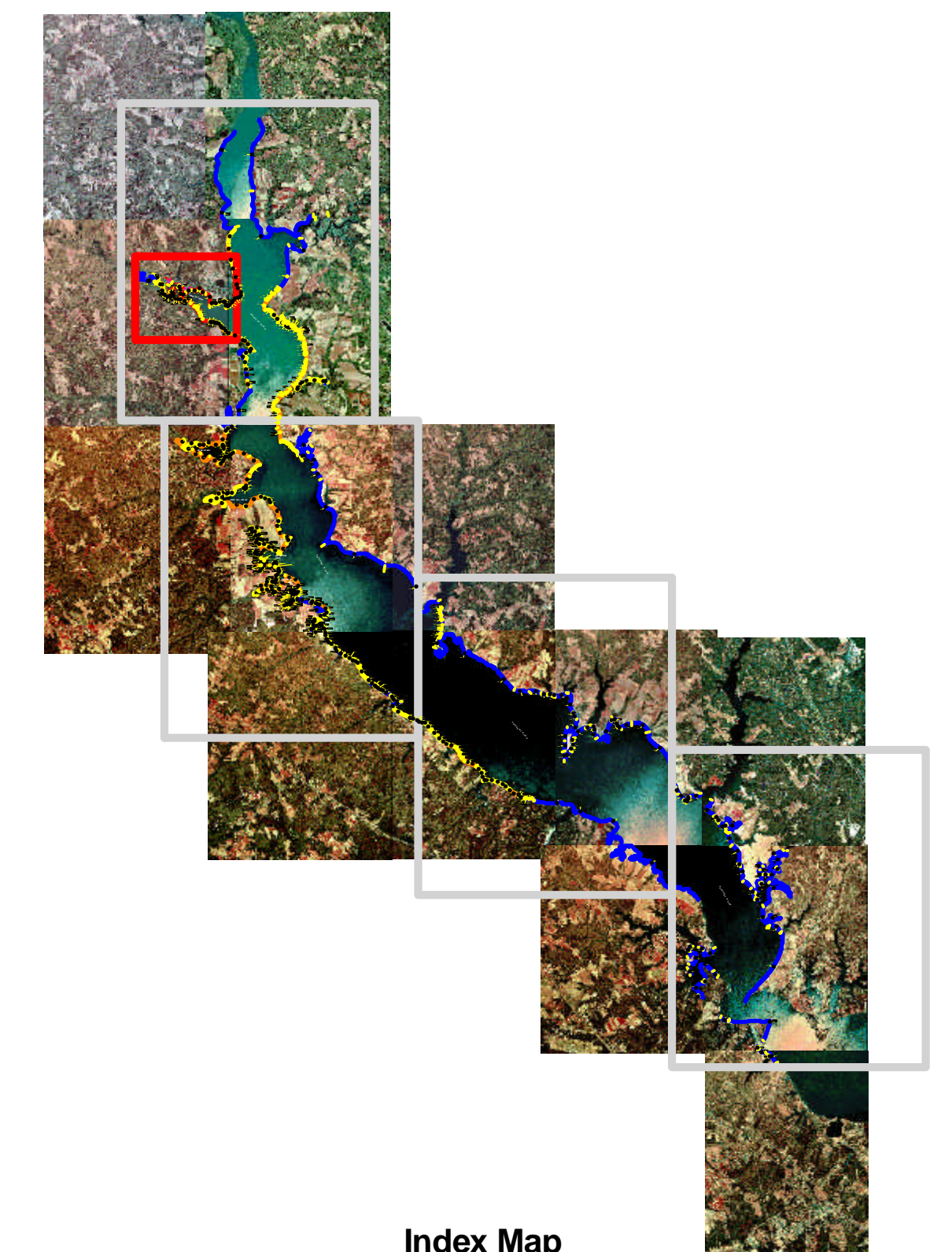
- Notes:**
1. SCAT data provided by Polaris and ENTRIX on CD-ROM dated 10/25/00.
 2. Base image is Digital Ortho Quarter Quadrangles.
 3. Line widths shown are for illustrational purposes only and are not scaled to the actual width of the oiled area.

Pepco Chalk Point Power Plant
Swanson Creek Incident
Patuxent River, Maryland

NRDA OILING CLASSIFICATION
MAP 4 OF 5



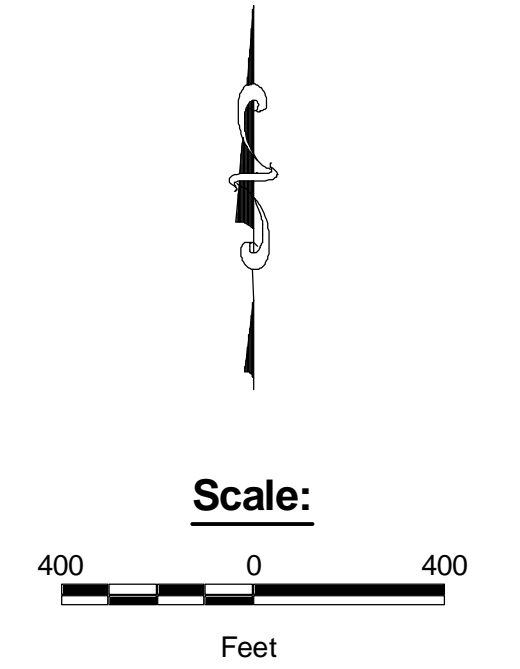
Vicinity Map



Index Map

Legend:

- NRDA Oiling Category
- Heavy Oiling
- Moderate Oiling
- Light Oiling
- No oil
- Transitional Oiled Areas
- Restricted Access Areas



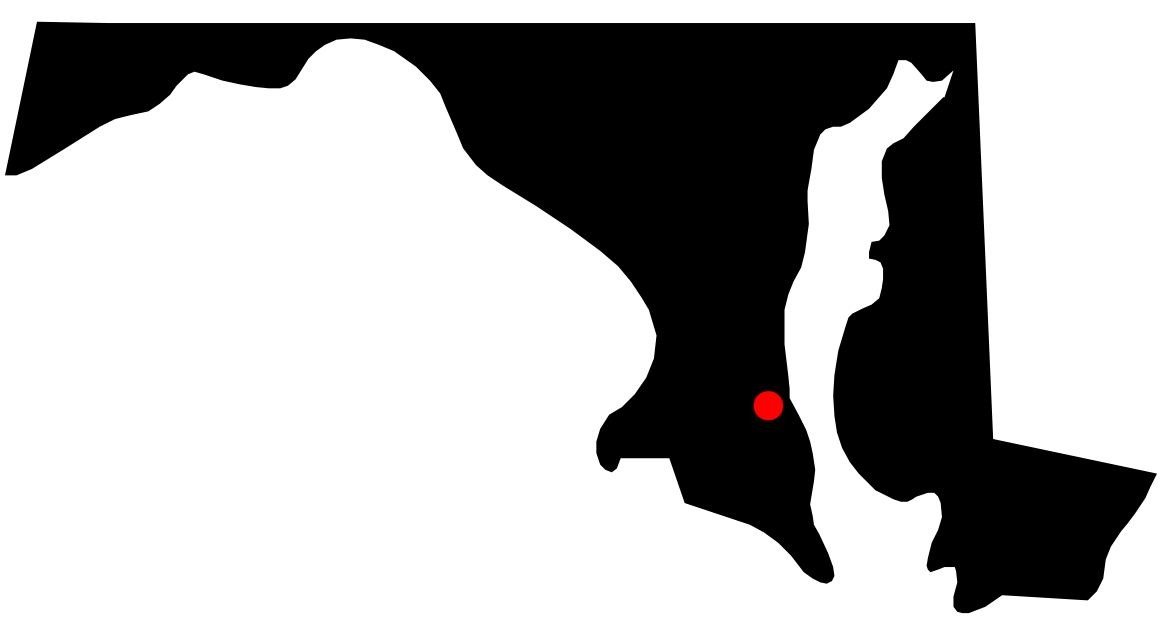
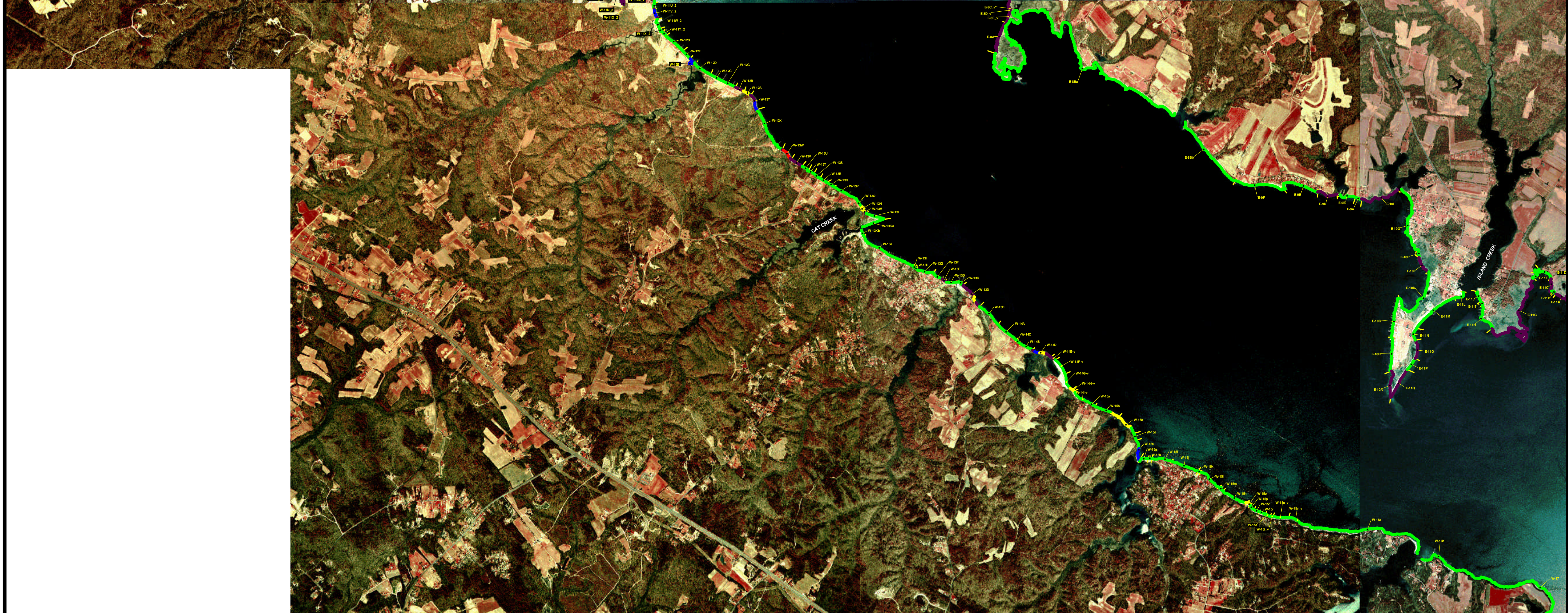
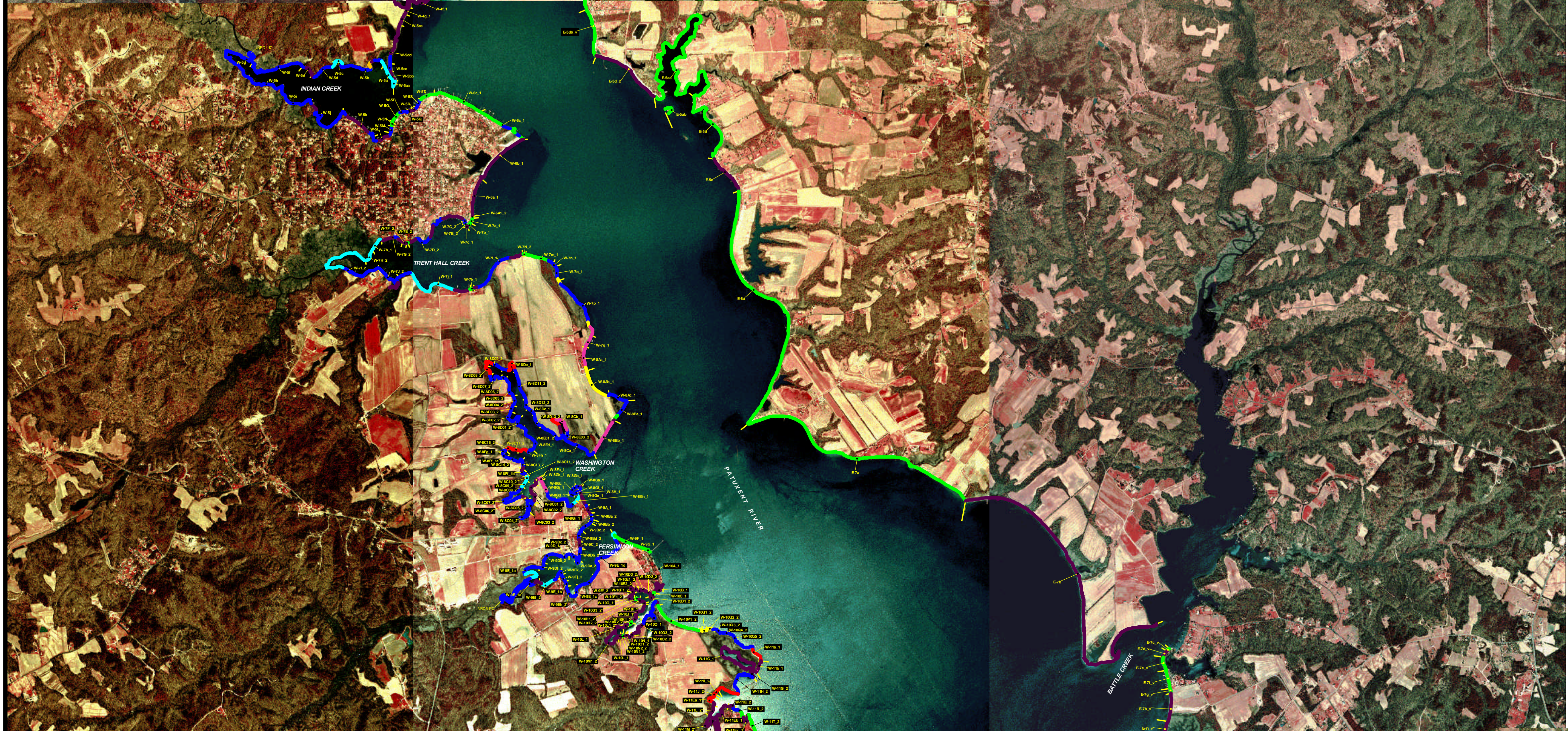
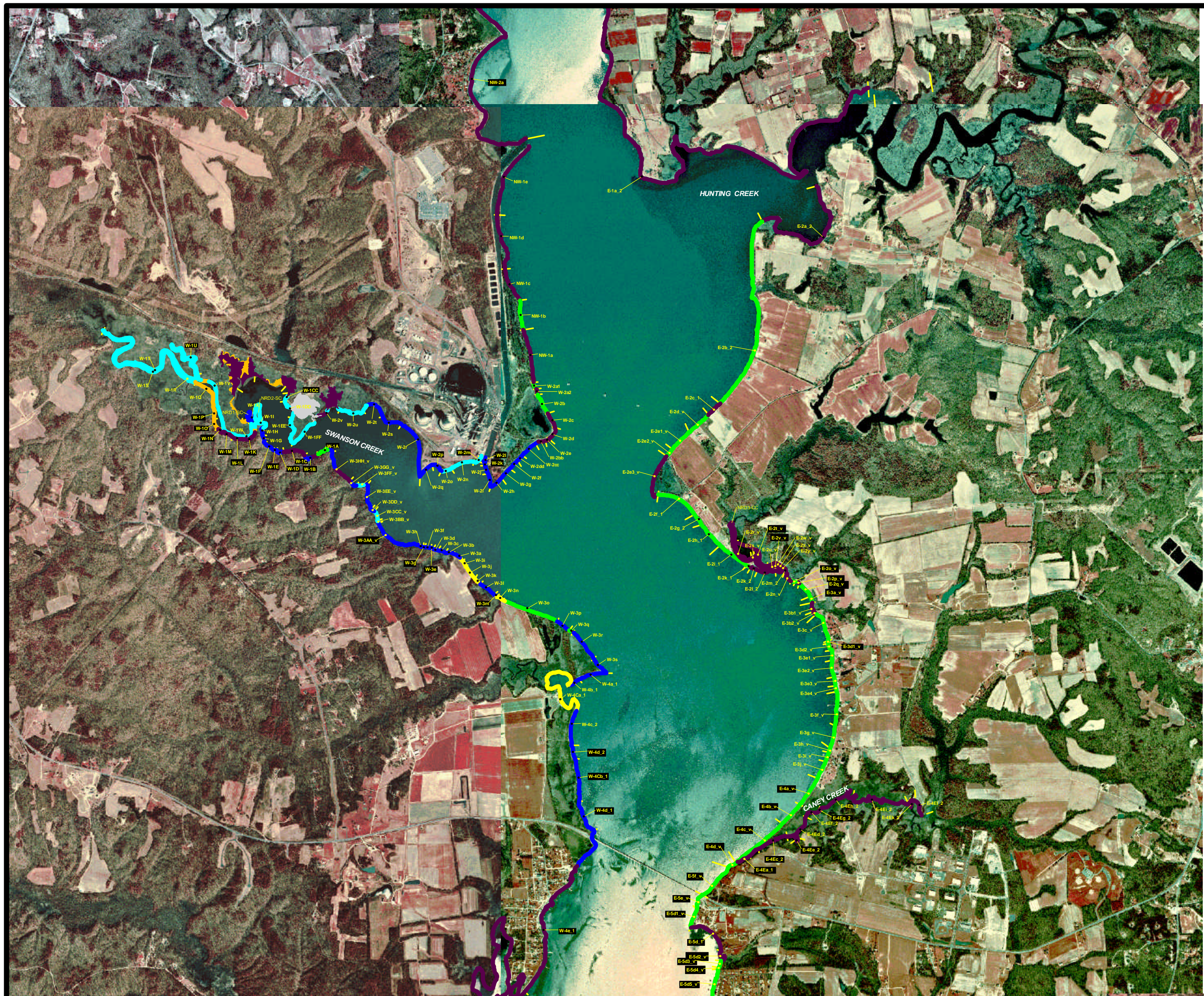
Notes:

1. SCAT data provided by Polaris and ENTRIX on CD-ROM dated 10/25/00.
2. Base image is natural color aerial photograph provided by AirNova.
3. Line widths shown are for illustrational purposes only and are not scaled to the actual width of the oiled area.

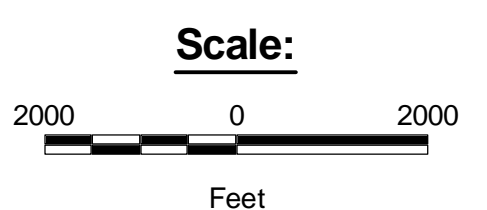
Pepco Chalk Point Power Plant
Swanson Creek Incident
Patuxent River, Maryland

NRDA OILING CLASSIFICATION
MAP 5 OF 5

 <small>ENVIRONMENTAL CONSULTANTS 10 CORPORATE CIRCLE NEW CASTLE, DE 19720 (302) 395-1919</small>	 <small>Environmental Science Services, Inc. P.O. Box 84408 Baton Rouge, Louisiana 70884-4408 (225) 927-7171</small>
--	---



Vicinity Map



- Legend:**
- Najas frutescens*
 - Phragmites communis*
 - Spartina alterniflora*
 - Spartina cynosuroides*
 - Spartina patens*
 - Spartina* spp.
 - Typha* spp.
 - W1A - Mixed species habitat
 - Non wetland habitat

- Notes:**
1. Habitat delineation conducted by the Marsh Assessment Team.
 2. All marsh segments where no species data were available are classified as *Spartina* spp.
 3. Base image is Digital Ortho Quarter Quadrangles.

Peppo Chalk Point Power Plant
Swanson Creek Incident
Patuxent River, Maryland

HABITAT DELINEATION MAP

