



U.S. Department
of Homeland Security
**United States
Coast Guard**

**LOCAL NOTICE TO MARINERS
WEEKLY EDITION**

District: 7

Week: 47/06

Issued by:
Commander, Seventh Coast Guard District
909 SE 1st Avenue, Miami, Florida 33131-3050
Telephone (305) 415-6730 or (305) 415-6751
Fax (305) 415-6757
Office hours 7:30 a.m. - 4:00 p.m., M-F

BROADCAST NOTICE TO MARINERS

Navigation information having been of immediate concern to the Mariner, and promulgated by the following broadcasts, has been incorporated in this notice when still effective:

- CCGD7 (D7) BNM 977-06 to 994-06
- SECTOR CHARLESTON (CHA) BNM 337-06 to 353-06
- SECTOR JACKSONVILLE (MAY) BNM 380-06 to 394-06
- SECTOR MIAMI (MIA) BNM 572-06 to 576-06
- SECTOR KEY WEST (KEY) BNM 187-06 to 206-06
- SECTOR ST.PETERSBURG (STP) BNM 1405-06 to 1466-06
- SECTOR SAN JUAN (GAN) BNM 281-06 to 281-06

NOTES: (1) Unless otherwise indicated, missing and destroyed structures are presumed to be in the immediate vicinity, mariners should proceed with caution.

(2) The Local Notice to Mariners consists of a Weekly Edition.

(3) Inquiries, Published Articles or Information: (e-mail) Bernard.A.Dukes@uscg.mil

REFERENCES: Light List, Vol. III, Atlantic and Gulf Coasts, 2006 Edition (COMDTPUB P16502.3).
U.S. Coast Pilot 4, Atlantic Coast: Cape Henry to Key West, 2006 (38th Edition).
U.S. Coast Pilot 5, Atlantic Coast: Gulf of Mexico, Puerto Rico and Virgin Islands 2006 (34rd) Edition.

The Local Notice to Mariners is available online at:
<http://www.navcen.uscg.gov/lnm/d7>

The United States Coast Guard Navigation Information Service (NIS)

The United States Coast Guard Navigation Information Service (NIS), operated by the USCG Navigation Center, is staffed 24 hours a day, 7 days a week. The NIS provides information on the current operational status, effective policies, and general information for GPS, DGPS, and LORAN-C. The NIS also disseminates Safety Broadcasts (BNM), Local Notice to Mariners (LNM), and the latest Notice Advisory to Navstar Users (NANU). NANU notices can be obtained via email subscription through the USCG Navigation Center website: <http://www.navcen.uscg.gov/gps/status/default.htm>.

In addition, the NIS investigates all reports of degradation or loss of GPS, DGPS or LORAN service. Mariners are encouraged to report all degradation or loss of radio navigation services to the NIS via any of the following: Phone: (703) 313-5900, Email: webmaster@smtp.navcen.uscg.mil, or on the World Wide Web at: <http://www.navcen.uscg.gov>

REPORT DISCREPANCIES IN AIDS TO NAVIGATION TO THE NEAREST COAST GUARD UNIT

SAFE BOATING AND SEAMANSHIP PROGRAMS: (See Enclosure Section)

ABBREVIATIONS

A through I

ACOE - Army Corps of Engineers
ADRIFT - Buoy Adrift
AICW - Atlantic Intracoastal Waterway
B - Buoy
BKW - Breakwater
B - Refer to Light List
BNM - Broadcast Notice to Mariner
CG - Refer to Light List
CHAN - Channel
CGD - Coast Guard District
CR - Refer to Light List
C/O - Cut Off
CONT - Contour
CONSTR - Construction
CRK - Creek
CONST - Construction
DBN - Daybeacon
DBD/DAYBD - Dayboard
DBN/DEST - Daybeacon Destroyed
DBN IMCH - Daybeacon Improper
Characteristic
DISCON - Discontinued
DMGD - Daybeacon Damaged
EST - Established Aid
EVAL - Evaluation
EXT - Extinguished
FL - Flashing
FS - Fog Signal
HAZ - Hazard to Navigation
HBR - Harbor
HOR - Horizontal Clearance
HT - Height
ICW - Intracoastal Waterway
IMCH - Improper Characteristic
INL - Inlet
INOP - Not Operating
ISL - Islet
-

K through M

KBG - Refer to Light List
KBG-I - Refer to Light List
KBR - Refer to Light List
KBR-I - Refer to Light List
KBW - Refer to Light List
KGB - Refer to Light List
KGB-I - Refer to Light List
KGR - Refer to Light List
KGR-I - Refer to Light List
KGW - Refer to Light List
KGW-I - Refer to Light List
KRB - Refer to Light List
KRB-I - Refer to Light List
KRG - Refer to Light List
KRG-I - Refer to Light List
KRW - Refer to Light List
KWB - Refer to Light List
KWB-I - Refer to Light List
KWG - Refer to Light List
KWG-I - Refer to Light List
KWR - Refer to Light List
KWR-I - Refer to Light List
LAT - Latitude
LB - Lighted Buoy
LBB - Lighted Bell Buoy
LHB - Lighted Horn Buoy
LGB - Lighted Gong Buoy
LONG - Longitude
LNM - Local Notice to Mariners
LT - Light
LT CONT - Light Continuous
LWB - Lighted Whistle Buoy
LWP - Left Watching Properly
MISS - Missing
MR - Refer to Light List
MR-I - Refer to Light List

N through Z

NB - Refer to Light List
N/C - Not Charted
ND - Refer to Light List
NG - Refer to Light List
NGA - National Geospatial-Intelligence Agency
NL - Refer to Light List
NO - Number
NOS - National Ocean Service
NR - Refer to Light List
NW - Refer to Light List
NW - Notice Writer
NY - Refer to Light List
OBSCU - Obscured
OBST - Obstruction
OBSTR - Obstruction
PRIV - Private Aid
RBN - Radio Beacon
REBUILT - Aid Rebuilt
RECOVERED - Aid Recovered
RED - Red Buoy
REDINT - Reduced Intensity
RRL - Range Rear Light
RELIGHTED - Aid Relighted
RELOC - Relocated
RESET ON STATION - Aid Reset on Station
RFL - Range Front Light
RIV - River
SEC - Section
SG - Green Square
SG-SY - Green Square with Yellow Square
SHL - Shoaling
SND - Sound
TEMP - Temporary Aid Change
St M - Statute Mile
TR - Red Triangle
TRLB - Temporarily Replaced by Lighted Buoy
TRLT - Temporarily Replaced by Light
TR-TY - Red Triangle with Yellow Triangle
TRUB - Temporarily Replaced by Unlighted Buoy

Additional Abbreviations Specific to this LNM Edition: None

SECTION I - SPECIAL NOTICES

This section contains information of special concern to the Mariner.

DGPS KEY WEST, FLORIDA OFF AIR TIMES

DGPS Key West, Florida will be off air November 30, 2006 from 1400Z to 1600Z (0900-1100) for Semi-Annual PMS. Alternate date is December 1, 2006 from 1400Z to 1600Z (0900-1100). User shall address inquiries to the DGPS Operations Control Officer CWO Thor Banks at (703) 313-5811.

LNM: 45/06

NORTH ATLANTIC RIGHT WHALES WARNING:

From December to March the coastal waters between Altamaha Sound, GA, and Sebastian Inlet, FL, are used as calving grounds by the severely endangered North Atlantic Right Whale. This is the world's only known calving ground for this species. Right Whales are the rarest whales in the world and are protected under law from disturbance or injury by the endangered species act of 1973, and the Marine Mammal Protection act of 1972. Right Whales, especially females and their calves, are slow swimmers and frequently lie at the surface. This behavior makes them vulnerable to collisions with ships, which are a significant source of mortality. Vessels operating within 25 miles of shore between 31-27N and 29-50N and within five miles of shore from 29-50N and 28-00N should take precautions to avoid collisions with Right Whales.

For Complete Text of Message See Enclosure (1).

LNM: 44/06

Hurricane Season

The hurricane season extends from June through November. Hurricanes can cause excessive damage to vessels and loss of life. To minimize these dangers, the following precautions should be taken by all mariners before getting underway during the hurricane season:

- (a) Instruction of crew and passengers in location of emergency equipment and emergency procedures;
- (b) Pre-sailing check of vessel, machinery, and equipment for seaworthiness;
- (c) Installation of strong ground tackle;
- (d) Review of storm center evasion procedures;
- (e) Knowledge of nearest hurricane shelter or port; and
- (f) Constant radio watches on channel 16 VHF-FM and frequent monitoring of weather broadcasts.

HURRICANE INFORMATION

The civilian hurricane warning service for the North Atlantic is provided by the National Hurricane Center, Miami, Florida. The center collates ship, aircraft, radar, and satellite data to produce and issue tropical cyclone warnings and forecasts for the North Atlantic Ocean, including the Caribbean Sea and the Gulf of Mexico. A Tropical Cyclone Advisory message is issued every six hours, with intermediate bulletins provided as needed.

For tropical storms and hurricanes threatening to cross the coast of the U.S., coastal warnings are issued to the public so that precautionary actions, including evacuation, can be initiated to minimize damage and loss of life. Two levels of warnings are employed:

- (a) HURRICANE WATCH - a preliminary alert that a hurricane MAY threaten a specified portion of the coast. It is issued 36 hours before landfall may occur; and
- (b) HURRICANE WARNING - which indicate that hurricane conditions are EXPECTED along a specified portion of the coast. It is issued 24 hours before landfall. To provide additional information for maritime interests, a Marine Advisory is also issued which provides storm position forecasts for up to 72 hours in advance of a storm, and probabilities of hurricane strikes for coastal locations and offshore coordinates.

Mariners are reminded that aids to navigation, particularly lighted and unlighted buoys, may be moved from charted position, damaged, destroyed, extinguished or otherwise deemed discrepant as a result of hurricane and storms. Mariners should not rely solely upon the position or operation of an aid to navigation, but also employ such other methods of determining position as may be available.

Mariners are further reminded that during the hurricane season drawbridges along the coast may deviate from normal operating procedures. Drawbridges are authorized to remain closed upon approach of gale force winds of 34 knots or greater. Others may be authorized to extend closed periods prior to gale force winds to facilitate evacuation of land traffic or close operations up to 8 hours before expected arrival of gale force winds. Due to the uncertainty of hurricane movements and bridge closures, mariners are urged to seek passage through drawbridges well in advance of the arrival of gale force winds.

LNM: 22/06

FEDERAL REGISTER: MARCH 8, 2006 (VOLUME 71, NUMBER 45), RULES AND REGULATIONS:

**FEDERAL REGISTER: MARCH 8, 2006 (VOLUME 71, NUMBER 45), RULES AND REGULATIONS:
REGULATED NAVIGATION AREA; SAN CARLOS BAY, FLORIDA**

SUMMARY: The Coast Guard is establishing a temporary regulated navigation area on the waters of San Carlos Bay, Florida. The regulated navigation area is needed to minimize the risk of potential bridge collisions by vessels utilizing the main channel under span -A- (bascule portion) of the Sanibel Island Causeway Bridge and enhance the safety of vessels transiting the area and vehicles crossing over the bridge.

DATES: This rule is effective from 8:00 a.m. on January 8, 2006 until 8:00 a.m. on January 7, 2007.

FOR FURTHER INFORMATION CONTACT: Lieutenant Junior Grade Jennifer Andrew at Coast Guard Sector St. Petersburg, Prevention Department, (813) 228-2191, Ext. 8203.

For Complete Text See Local Notice to Mariner (LNM 11/06) Dated 14 March 2006

Chart 11427

LNM: 11/06

FLORIDA-INTRACOASTAL WATERWAY-PALM SHORES TO WEST PALM BEACH-WAMS ANNOUNCEMENT

The U.S. Coast Guard is conducting a Waterways Analysis and Management System (WAMS) study of the Intracoastal Waterway (ICW) between mile marker 1006.2 at Jupiter Inlet, Florida. The study focuses on the area's aid to navigation, waterborne commerce, marine casualty information, port, harbor resources, emergency response plans, routine and emergency communication capabilities, and future development projects.

Any company or individual wishing to provide comments or participate in a user survey should contact USCG Sector Miami Waterways Management Division WAMS Officer CWO2 William Weaver by the close of business 15 February 2006.

CWO2 William Weaver can be contacted at Sector Miami, Florida at (305) 535-4311, via e-mail at: William.C.Weaver@uscg.mil or via mail at: Commander (WAMS), USCG Sector Miami, 100 MacArthur Causeway, Miami Beach, Florida 33139, Attn: CWO2 W. Weaver.

Chart 11472

LNM: 44/06

SPECIAL WARNING NUMBER 123, SOMALI.

Due to continuing conditions of armed conflict and lawlessness in Somalia and waters off its coast. Mariners are advised to avoid the Port of Mogadishu and to remain at least 200 nautical miles distant from the Somali Coast.

For Complete Text of Message see Enclosure (2).

LNM: 47/05

OPERATION "ON GUARD"

U. S. Coast Guard Marine Safety Office Miami announces Operation "ON GUARD". This operation is designed to employ Coast Guard - active duty, reserve and auxiliary, Federal Bureau of Investigation, US Customs Service, US Immigration and Naturalization Service and the Florida Department of Law Enforcement personnel in response to suspected terrorist activity at the waterfront facilities of the United States.

For Complete Text of Message See Enclosure (3).

NAVAL PROTECTION ZONES

The U. S. Coast Guard has established protection zones around U. S. Naval vessels within U. S. navigable waters. Naval vessels protection zones are established within 100 yards of any U. S. Naval vessel. This includes any vessel owned, operated, chartered, or leased by the U. S. Navy or under the operational control of the U. S. Navy.

Vessels within 500 yards of a U.S. Naval vessel shall operating at the minimum speed necessary to maintain a safe course and proceed as directed by the official patrol. Mariners may contact the U.S. Coast Guard on VHF Channel 16 regarding this message.

DATES OF LATEST EDITIONS, NAUTICALS CHARTS AND MISCELLANEOUS MAPS

The Dates of Latest Editions, Nautical Charts and Miscellaneous Maps, dated October 1, 2006, published by the National Ocean Service, is available for issue. It may be obtained free by mail from the FAA/National Aeronautical Charting Office, Distribution Division AVN-530, 10201, Good Luck Road, Glenn Dale, MD, 20769-9700, by telephone at 1-800-638-8972 or from your local authorized nautical chart sales agent. This is a quarterly publication listing the most recent editions of nautical charts, miscellaneous maps and publications relating to navigation, weather, etc. with brief descriptions and up-to-date prices for most of the publications listed. Much of this information may also be obtained

DATES OF LATEST EDITIONS, NAUTICALS CHARTS AND MISCELLANEOUS MAPS

online at: <http://chartmaker.ncd.noaa.gov/mcd/dole.htm>

LNM: 16/06

INTERNET DELIVERY OF U.S. NOTICE TO MARINERS

The National Geospatial-Intelligence Agency (NGA) has changed the way the U.S. Notice to Mariners are made available to the maritime community. NGA will continue to provide U.S. Notice to Mariners to the public but only in the digital version exclusively via the Internet.

U.S. COAST PILOT 4, ATLANTIC COAST: CAPE HENRY, VA TO KEY WEST, FL

PUBLICATION - National Ocean Service - U.S. Coast Pilot 4, Atlantic Coast: Cape Henry, VA to Key West, FL, 2006, 38th Edition, is ready for issue and may be obtained from:

Federal Aviation Administration
National Aeronautical Charting Office
Distribution Division, AVN - 530
10201 Good Luck Road
Glenn Dale, MD 20769-9700

and authorized agents of the National Ocean Service. Price \$26.00. The 2006 Edition cancels the preceding 2005 Edition. All corrections to the previous edition issued in Notices to Mariners are incorporated in this edition.

Mariners are encouraged to use the convenient -RECORD OF CHANGES- form on Page VI of this book. All Coast Pilot changes published in the U.S. Coast Guard Local Notice to Mariners, National Geospatial-Intelligence Agency Notice to mariners, and on the Internet at: <http://nauticalcharts.noaa.gov/nsd/cpdownload.htm>. are serially numbered (i.e., Changes No. 1, Changes No. 2. etc.) to assist you in tracking the changes.

SECTION II - DISCREPANCIES

This section lists all reported and corrected discrepancies related to Aids to Navigation in this edition. A discrepancy is a change in the status of an aid to navigation that differs from what is published or charted.

DISCREPANCIES (FEDERAL AIDS)

LLNR	Aid Name	Status	Chart No.	BNM Ref.	LNM St	LNM End
515	St Simons Lighted Whistle Buoy STS	LT EXT/RAC INOP	11504	337-06 CHA	45/06	
725	Jupiter Inlet Light	LT EXT	11472	551-06 MIA	44/06	
805	Port Everglades Spoil Bank East Daybeacon	TRUB	11470	506-05 MIA	47/05	
810	Port Everglades Spoil West Bank Daybeacon	TRUB	11470	411-05 MIA	32/05	
950	Elbow Reef Light 6	TRLB	11451	301-05 KWT	39/05	
970	Davis Reef Light 14	TRUB	11464	106-06 KWT	39/05	
1005	Big Pine Shoal Light 22	TRLB	11446	567-05 KWT	40/05	
1010	Looe Key Light 24	TRLB	11442	187-06 KWT	39/05	
1080	Twenty-Eight Foot Shoal Light	TRLB/RAC INOP	11439	174-06 KWT	40/05	
1085	Halfmoon Shoal Light WR2	TRLB	11439	112-06 KWT	30/05	
1090	Rebecca Shoal Light	TRLT/DBN DMGD/DBD DEST	11439	113-06 KWT	42/05	
1120	Fort Jefferson Lighted Buoy E	MISSING	11438	N/A	30/06	
1190	New Ground Rocks Light	DBD DEST	11439	373-05 KWT	42/05	
1230	Cape Romano Shoals Light	TRLB	11430	058-06 STP	47/05	
1390	Tampa Bay Lighted Buoy T	RAC INOP	11415	1429-06 STP	45/06	
1505	Clearwater Pass Channel Light 1	REDUCED INT/REDUCED INT DAY	11412	1481-06 STP	47/06	
1620	Cedar Keys Main Channel Light 1	TRLB	11408	0337-06 STP	12/05	

1625	Cedar Keys Northwest Channel Approach Light 2	TRLB	11408	0673-06 STP	19/06
1645	Horseshoe Beach Approach Light 2	TRLB/LT EXT/DBN DEST	11407	0859-06 STP	25/06
1750	Little River Inlet Daybeacon 18	MISSING	11534	NA	47/06
3470	Wando River Range E Rear Daybeacon	DBN DMGD	11524	167-06 CHA	22/06
4775	New Channel Range Rear Light	DBD DMGD	11507	043-06 CHA	07/06
4825	Lower Flats Range Lighted Buoy 35	REDUCED INT	11507	350-06 CHA	46/06
5095	Port Wentworth Channel Range B Front Light	DBN DMGD	11514	344-06 CHA	46/06
5740	Ossabaw Sound Preferred Channel Buoy N	TRUB	11511	332-06 CHA	42/06
5835	Sapelo Sound Buoy S	TMK MISSING	11510	162-06 CHA	20/06
6030	St Simons Lighted Whistle Buoy STS	LT EXT/RAC INOP	11504	337-06 CHA	45/06
6195	Cedar Hammock Range Front Light	REDUCED INT	11489	338-06 CHA	43/06
7045	Amelia River Lighted Buoy 2	LT EXT	11503	339-06 JAX	40/06
7120	St Johns Bar Cut Range Rear Light	LT EXT	11491	356-06 JAX	25/06
7360	Fulton Cutoff Light 36	TRLB	11491	275-06 JAX	24/06
7845	Ragged Point Light 12	TRUB	11492	910-06 JAX	40/06
9210	Butchers Bend Cutoff Daybeacon 111	TRUB	11498	293-06 JAX	35/06
9510	St Augustine Inlet Buoy 10	TRUB	11485	401-06 JAX	45/06
9540	Ponce De Leon Inlet Lighted Buoy 7	LT EXT	11485	399-06 MIA	47/06
9815.1	Fort Pierce Inlet Lighted Buoy 3	LT EXT	11475	574-06 MIA	45/06
10300	Hillsboro Inlet Daybeacon 3	DBD DEST	11467	570-06 MIA	45/06
10303	Hillsboro Inlet Entrance Daybeacon 5	TRLB/DBN DEST	11467	571-06 MIA	45/06
10330	Port Everglades Light 4	MISSING	11470	129-06 MIA	05/06
10485	Miami Main Channel Lighted Buoy 4	LT EXT	11468	602-06 MIA	47/06
12655	Big Spanish Channel Daybeacon 52	TRLB	11448	150-06 KWT	32/06
13610	East Turtle Shoal Light 45	TRUB	11449	566-05 KWT	41/05
13815	Boot Key Harbor Daybeacon 21	TRUB/DBN DEST	11449	207-06 KWT	46/06
15220	Key West Northwest Channel Light 12	TRLB	11441	202-06 KWT	46/06
15365	Calda Channel Daybeacon 11	TRUB	11441	403-05 KWT	45/05
15440	Dry Tortugas Southeast Channel Light 1	LT EXT/DBN DEST	11438	166-04 KWT	34/04
15450	Dry Tortugas Southeast Channel Light 3	TRLB	11438	285-05 KWT	41/05
15455	Dry Tortugas Southeast Channel Daybeacon 4	TRUB	11438	107-06 KWT	37/05
15505	Dry Tortugas Southwest Channel Daybeacon 3	TRLB	11438	517-05 KWT	45/05
15635	Sandy Key Channel Daybeacon 10X	TRUB	11451	571-05 KWT	45/05
15700	Flamingo Channel Daybeacon 13	TRDBN	11433	NA	49/05
15705	Flamingo Channel Daybeacon 14	TRUB	11433	267-04 MIA	24/04
15835	Whitewater Bay Daybeacon 36	DBD DMGD	11433	206-06 MIA	16/06
15980	Indian Key Pass Light 4	LT EXT	11430	1430-06 STP	45/06
17415	Big Marco Pass-Gordon Pass Daybeacon 65	TRUB	11430	NA	42/06
17600	Naples Bay Channel Daybeacon 26	TRLB	11430	1322-06 STP	42/06
18090	Matanzas Pass Channel Daybeacon 3	TRLB	11427	1416-06 STP	45/06
21605	New Pass Channel Buoy 5	MISSING/TRUB	11425	1453-06 STP	47/06
21725	New Pass Channel Daybeacon 17	TRUB	11425	1211-06 STP	39/06
21730	Siesta Key-Tampa Bay Junction Daybeacon NP	TRUB	11425	1229-06 STP	39/06
22070	Manatee River Daybeacon 24	DBD DMGD	11416	1480-06 STP	47/06
22225	Tampa Bay Lighted Buoy T	RAC INOP	11415	1429-06 STP	45/06
22355	Mullet Key Channel Range Front Light	DBD DMGD	11415	0899-06 STP	27/06
23595	Port Sutton Channel Light 3	TRLB	11415	1121-06 STP	34/06
23970	South Gandy Channel Daybeacon 3	TRUB	11415	0683-06 STP	16/06
24735.3	Point Pinellas Channel Light 11	TRLB	11415	1357-06 STP	44/06
25460	Pass-A-Grille Channel Daybeacon 1	TRUB	11411	1003-06 STP	28/06
25580	Johns Pass Channel Daybeacon 1	TRUB	11411	1006-06 STP	28/06

25680	Clearwater Pass Channel Light 1	REDUCED INT/REDUCED INT DAY	11412	1481-06 STP	47/06
25685	Clearwater Pass Channel Daybeacon 3	TRUB	11411	1138-06 STP	35/06
26115	Anclote Anchorage North Entrance Light 4	TRLB	11411	1324-06 STP	42/06
26165	Anclote River Entrance Daybeacon 6	TRUB	11411	1405-06 STP	44/06
26505	Pithlachascotee River Light 1	DBD DMGD	11411	1193-06 STP	38/06
26510	Pithlachascotee River Daybeacon 2	DBD DMGD	11411	1483-06 STP	47/06
26560.5	Pithlachascotee River Daybeacon 10A	TRUB	11411	0596-06 STP	18/06
28635	Homosassa River Daybeacon 69A	TRUB	11409	0331-06 STP	10/06
29240	Cross Florida Greenway Light 22	TRUB	11408	1072-06 STP	32/06
29455	Withlacoochee River Entrance Daybeacon 16	TRUB	11408	1478-06 STP	47/06
29755	Cedar Keys Main Channel Light 1	TRLB	11408	0337-06 STP	12/05
29920	Cedar Keys Northwest Channel Approach Light 2	TRLB	11408	0673-06 STP	19/06
30360	Horseshoe Beach Approach Light 2	TRLB/LT EXT/DBN DEST	11407	0859-06 STP	25/06
30370	Horseshoe Beach Approach Daybeacon 5	TRLB	11407	0857-06 STP	25/06
30740	Cabras Light	LT EXT/DBN DEST	25670	229-06 SJN	37/06
30770	Bahia de San Juan Lighted Buoy 4	OFF STA	25670	296-06 SJN	47/06
30805	Bahia de San Juan Lighted Buoy 11	LT EXT	25670	302-06 SJN	47/06
31130	Boca de Cangrejos Lighted Buoy BC	TRLB/BUOY DMGD/REDUCED INT	25668	095-06 SJN	12/06
31155	Cabo San Juan Light	LT IMCH	25667	261-06 SJN	37/06
32880	Christiansted Harbor Channel Lighted Buoy 3	SINKING	25645	269-06 SJN	43/06
33345	Southwest Cape Shoal Buoy 2	TRUB	25644	073-06 SJN	13/06
33410	St Nicolas Point Channel Light 6	TRUB	26230	067-05 GAN	11/05
33535	Mud Island Light 1	TRUB	26230	068-05 GAN	11/05
33610	Little River-Winyah Bay Light 4	TRLB	11534	NA	42/06
33845	Little River-Winyah Bay Light 38	TRLB	11534	NA	42/06
34220	Winyah Bay-Charleston Harbor Light 31	TRLB/DBN DEST	11518	347-06	46/06
34840	Wadmalaw River Range A Front Light	MISSING	11518	352-06 CHA	47/06
35070	South Edisto River Range A Front Light	REDUCED INT	11517	415-05 CHA	50/05
35855	Walls Cut Daybeacon 46	DBN DEST	11507	173-05 CHA	24/06
36380	Florida Passage Range Rear Daybeacon	DBN DEST	11507	177-06 CHA	25/06
36555	Johnson Creek Daybeacon 131	TRUB	11507	330-06 CHA	44/06
36620	South Newport River Light 135	OFF STA /TRLB	11507	364-06 CHA	38/06
37010	South Altamaha River Daybeacon 8	TRUB	11508	N/A	41/05
37320	Jekyll Creek Daybeacon 16	TRUB	11506	214-06 CHA	28/06
37340	Jekyll Creek Light 19	TRUB	11489	297-06 CHA	37/06
37355	Jekyll Creek Daybeacon 24	TRUB	11489	271-06 CHA	36/06
37590	Cumberland River Daybeacon 57	TRLB	11489	369-06 JAX	44/06
37660	Cumberland Sound Daybeacon 70	TRUB	11489	362-06 JAX	43/06
37925	Amelia River Lighted Buoy 2	LT EXT	11503	339-06 JAX	40/06
38190	Sawpit Creek Light 49	TRLB	11489	326-06 JAX	32/06
38195	Sawpit Creek Daybeacon 50	TRUB	11489	368-06 JAX	44/06
38215	Gunnison Cut Light 57	TRLB	11489	390-06 JAX	46/06
38352	Pablo Creek Buoy 2	TRUB	11491	353-06 JAX	42/06
38425	Pablo Creek Daybeacon 13	TRUB	11489	342-06 JAX	39/06
38485	Pablo Creek Daybeacon 29	TRUB	11489	327-06 JAX	39/06
38570	Pablo Creek Daybeacon 36	TRUB	11489	348-06 JAX	41/06
38595	Pablo Creek Daybeacon 41	TRUB	11489	330-06 JAX	39/06
39061	Mantanzas River Daybeacon 7	LT EXT	11485	399-06 JAX	47/06
39065	Matanzas River Daybeacon 10A	TRUB	11485	367-06 JAX	44/06
39450	Matanzas River Daybeacon 58	TRUB	11485	296-06 JAX	35/06
39470	Matanzas River Daybeacon 66	TRUB	11485	231-06 JAX	26/06
39475	Matanzas River Light 67	TRLB	11485	233-06 JAX	26/06

39480	Matanzas River Daybeacon 68	TRUB	11485	232-06 JAX	26/06
39790	Smith Creek Daybeacon 22	TRUB	11485	357-06 JAX	43/06
39950	Halifax River Daybeacon 19	TRLB/DBN DMGD	11485	391-06 JAX	46/06
40195	Halifax River Daybeacon 44	TRUB	11485	174-06 JAX	20/06
40240	Halifax River Daybeacon 55	TRUB	11485	247-06 JAX	27/06
40473	Halifax River Daybeacon 68A	TRUB	11485	205/217-06 JAX	24/06
40490	Halifax River Daybeacon 72	TRUB	11485	200-06 Jax	23/06
40615	Ponce de Leon Cut Junction Daybeacon	TRUB	11485	493-05 JAX	51/05
40960	Mosquito Lagoon Daybeacon 14	TRUB	11485	348-06 JAX	41/06
41190	Indian River (North Section) Daybeacon 23	TRUB	11485	255-06 JAX	29/06
41725	Banana River North Daybeacon 13A	TRLB	11478	309-06 JAX	37/06
42335	Indian River (North Section) Daybeacon 99	TRUB	11472	400-06 JAX	47/06
44195	Vero Beach Channel Daybeacon 4	TRUB	11472	449-06 MIA	39/06
45110	Indian River (South Section) Daybeacon 186	TRUB/DBN DEST	11475	585-06 MIA	46/06
45255	Indian River (South Section) Daybeacon 189	TRUB/DBN DEST	11472	589-06 MIA	47/06
45785	Indian River (South Section) Daybeacon 225	TRUB	11472	529-06 MIA	42/06
47365	Stranahan River Light 18	DBD DEST	11470	569-06 MIA	45/06
50710	St Lucie River Daybeacon 8	TRUB	11472	270-06 MIA	21/06
50720	St Lucie River Light 11	TRLB/DBN DMGD	11472	563-06 MIA	45/06
51120	St Lucie Canal Daybeacon 38	TRUB	11428	109-06 MIA	09/06
51125	St Lucie Canal Daybeacon 39	TRUB	11428	566-06 MIA	45/06
51225	Rocky Reef North Light 7	DBN DEST	11428	565-06 MIA	45/06
51270	Clewiston Channel (Rt 1B) Daybeacon 4	TRUB	11428	547-06 MIA	44/06
51285	Clewiston Channel (Rt 1B) Daybeacon 7	TRUB	11428	548-06 MIA	43/06
51445	Lake Okeechobee (Rt 2) Daybeacon 13	TRUB	11428	001-06 MIA	45/05
51465	Lake Okeechobee (Rt 2) Daybeacon 19	TRUB	11428	N/A	45/05
51475	Lake Okeechobee (Rt 2) Daybeacon 21	DBD DEST	11428	673-05 MIA	45/05
51500	Lake Okeechobee (Rt 2) Daybeacon 26	TRUB	11428	002-06 MIA	45/05
51510	Lake Okeechobee (Rt 2) Daybeacon 28	TRUB	11428	N/A	45/05
51535	Lake Okeechobee (Rt 2) Daybeacon 34	TRUB	11428	003-06 MIA	45/05
51565	Lake Okeechobee (Rt 2) Daybeacon 41	TRUB	11428	004-06 MIA	45/05
51600	Lake Okeechobee (Rt 2) Daybeacon 53	TRUB	11428	N/A	45/05
51605	Lake Okeechobee (Rt 2) Daybeacon 54	TRUB	11428	N/A	45/05
51730	Bacom Point Channel Daybeacon 2	TRUB	11428	N/A	45/05
51750	Bacom Point Channel Daybeacon 6	TRUB	11428	006-06 MIA	02/06
51770	Lake Okeechobee (Rt 2) Daybeacon 80	TRUB	11428	N/A	45/05
51780	Lake Okeechobee (Rt 2) Daybeacon 84	TRLB	11428	N/A	45/05
51785	Lake Okeechobee (Rt 2) Daybeacon 86	TRUB	11428	005-06 MIA	45/05
51795	Lake Okeechobee (Rt 2) Daybeacon 89	TRUB	11428	546-06 MIA	45/05
51800	Lake Okeechobee (Rt 2) Daybeacon 91	TRUB	11428	N/A	45/05
51830	Lake Okeechobee (Rt 2) Daybeacon 98	TRUB	11428	545-06 MIA	45/05
54055	Caloosahatchee River Range Front Light E/F	LT EXT	11427	0513-06 STP	17/06
54760	Caloosahatchee River Daybeacon 94	TRLB/DBN DEST	11427	1448-06 STP	46/06
54775	Caloosahatchee River Range Rear Light H/I	DBD DEST	11427	0480-06 STP	16/06
56105	Pine Island Sound Light 63	TRLB/DBD DEST	11427	1232-06 STP	39/06
56125	Pine Island Sound Light 69	TRLB	11427	NA	44/06
58440	Venice Inlet-Siesta Key Light 82	TRLB	11425	1215-06 STP	39/06
58565	Siesta Key-Tampa Bay Junction Daybeacon NP	TRUB	11425	1229-06 STP	39/06
	AUTEC Site 4 Light 2	LT EXT	26312	387-04 D7	09/04
	Cap Haitien Daybeacon 13	DBD DEST	26147	NA	07/06

DISCREPANCIES (FEDERAL AIDS) CORRECTED

LLNR	Aid Name	Status	Chart No.	BNM Ref.	LNM St	LNM End
570	St Johns Lighted Buoy STJ	WATCHING PROPERLY	11491	N/A	45/06	47/06
6555	St Marys Entrance Lighted Buoy 7	WATCHING PROPERLY	11503	N/A	46/06	47/06
7110	St Johns Lighted Buoy STJ	WATCHING PROPERLY	11491	N/A	45/06	47/06
7515	Drummond Creek Range Front Light	WATCHING PROPERLY	11491	N/A	46/06	47/06
14870	Key West Main Channel Cut B Range Front Light	WATCHING PROPERLY	11447	NA	47/06	47/06
21590	New Pass Channel Buoy 1	WATCHING PROPERLY	11425	NA	47/06	47/06
21600	New Pass Channel Buoy 3A	WATCHING PROPERLY	11425	NA	47/06	47/06
22230	Egmont Channel Lighted Whistle Buoy 1	WATCHING PROPERLY	11415	NA	45/06	47/06
22755	Tampa Bay Cut E Channel Lighted Buoy 1E	WATCHING PROPERLY	11416	N/A	47/06	47/06
22800	Tampa Bay Cut F Channel South Range Rear Light	WATCHING PROPERLY	11416	NA	47/06	47/06
23485	Hillsborough Cut C Channel Lighted Buoy 28	WATCHING PROPERLY	11416	NA	47/06	47/06
30735	Puerto San Juan Light	WATCHING PROPERLY	25670	NA	47/06	47/06
30820	Bahia de San Juan Lighted Buoy 14	WATCHING PROPERLY	25670	NA	47/06	47/06
31080	Graving Dock Channel Lighted Buoy 3	WATCHING PROPERLY	25670	N/A	46/06	47/06
31085	Graving Dock Channel Lighted Buoy 4	WATCHING PROPERLY	25670	N/A	47/06	47/06
32290	Cabo Rojo Light	WATCHING PROPERLY	25671	N/A	47/06	47/06
35305	Coosaw River Light 203	WATCHING PROPERLY	11518	N/A	46/06	47/06
38245	Gunnison Cut Light 67	WATCHING PROPERLY	11489	NA	47/06	47/06
43105	Indian River (South Section) Light 2	WATCHING PROPERLY	11472	NA	47/06	47/06
46200	Jupiter Sound Light 53	WATCHING PROPERLY	11472	N/A	46/06	47/06
46210	Jupiter Sound Daybeacon 56	WATCHING PROPERLY	11472	N/A	40/06	47/06
46495	Lake Worth North Daybeacon 29	WATCHING PROPERLY	11472	N/A	44/06	47/06
46605	Lake Worth North Daybeacon 37	WATCHING PROPERLY	11472	N/A	41/06	47/06
46725	Lake Worth South Daybeacon 2A	WATCHING PROPERLY	11472	N/A	47/06	47/06
46975	Lake Worth South Daybeacon 36	WATCHING PROPERLY	11467	N/A	44/06	47/06
46975	Lake Worth South Daybeacon 36	WATCHING PROPERLY	11467	NA	47/06	47/06
47135	Lake Wyman Daybeacon 60	WATCHING PROPERLY	11467	N/A	39/06	47/06
48960	Dinner Key Channel Light 11	WATCHING PROPERLY	11465	NA	46/06	47/06

DISCREPANCIES (PRIVATE AIDS)

LLNR	Aid Name	Status	Chart No.	BNM Ref.	LNM St	LNM End
300	Fripp Island Drydock Fish Haven B	MISSING	11517	N/A	30/03	
655	Sebastian Inlet North Jetty Light	LT IMCH	11476	N/A	33/04	
774	Boca Raton Inlet South Jetty Light 1	LT EXT	11472	337-04 MIA	01/04	
840	NOAA DATA Lighted Buoy 41009	OFF STA	11480	560-04 MAY	37/04	
855	NOAA DATA Lighted Buoy 42036	ADRIFT	11400	1044-05 MIA	29/05	
965.3	NOAA Life Support Lighted Buoy (AQUARIUS)	OFF STA	11463	019-04 KWT	05/04	
1430	Redington Shores Fishing Pier North Light	LT EXT	11412	0927-05 STP	28/05	
1435	Indian Shores Fish Haven South B	MISSING	11412	0912-06 STP	27/06	
1440	Indian Shores Fish Haven Center B	BUOY DMGD	11412	0913-06 STP	27/06	
1445	Indian Shores Fish Haven North B	BUOY DMGD	11412	0911-06 STP	27/06	
1450	Indian Shores Artificial Reef Obstruction B	MISSING	11412	NA	19/06	
2665	Cooper River Degaussing Range E PI Light	LT EXT	11524	747-00 GD7	33/00	
2670	Cooper River Degaussing Range West PI Light	LT EXT	11524	015-00 CHA	02/00	
2815	U South Navy Pier P Light (1)	LT EXT	11524	N/A	28/05	

2865	U.S. Navy Pier B Light	LT EXT	11524	N/A	28/05
3015	Cooper River Ammunition Pier Light	LT EXT	11527	N/A	28/05
3245	Cooper River Mon Sta Obstruction Light E	LT IMCH	11527	N/A	28/05
3260	South Carolina Gas & Elec North Pier Light	LT EXT	11527	NA	38/06
3265	South Carolina Gas & Elec South Pier Light	LT EXT	11527	NA	38/06
3270	Cooper River Mon Sta Light C	LT EXT	11527	N/A	28/05
4355	Baynard Cove Creek Daybeacon 4	DBN DEST	11516	N/A	05/05
4360	Baynard Cove Creek Daybeacon 6	DBN IMCH	11516	N/A	05/05
6027	Cloister Hotel North Obstruction Light	LT EXT	11508	N/A	17/05
7210	Navy Fuel Pier Light (Mayport)	LT EXT	11491	254-06 JAX	43/03
7425	Blount Island Wharf Southwest Light	LT IMCH	11491	112-06 JAX	13/06
7430	Blount Island Wharf Northwest Light	LT IMCH	11491	111-06 JAX	13/06
9765	Sebastian Inlet Channel Daybeacon 8	DBN IMCH	11472	N/A	05/05
9770	Sebastian Inlet Channel Daybeacon 9	DBN DEST	11472	NA	09/06
9775	Sebastian Inlet Channel Daybeacon 10	DBN IMCH	11472	N/A	05/05
9795	Sebastian Inlet Channel Daybeacon 14	DBN DEST	11472	507-06 MIA	40/06
9880	Banty Saunders Rec Area Daybeacon 8	DBN IMCH	11475	N/A	13/05
10055	Sailfish Point Marina Channel Daybeacon 11	MISSING	11472	402-06 MIA	34/06
10720	MSRC Boundary Daybeacon A	DBN DEST	11468	669-05 MIA	45/05
10725	MSRC Boundary Daybeacon B	DBN DEST	11468	670-05 MIA	45/05
11030	Caesar Creek Daybeacon 10	TRUB	11463	534-06 MIA	43/06
11045	Caesar Creek Daybeacon 13	TRUB	11464	536-06 MIA	43/06
11550	Garden Cove Daybeacon 3	DBD DEST	11463	423-05 KWT	44/05
11560	Garden Cove Daybeacon 5	DBN DEST	11463	161-05 KWT	29/05
11565	Garden Cove Daybeacon 6	DBD DEST	11463	NA	44/05
11570	Garden Cove Daybeacon 7	DBD DEST	11463	NA	44/05
11575	Garden Cove Daybeacon 8	DBD DMGD	11463	NA	19/06
11580	Garden Cove Daybeacon 9	DBD DEST	11463	NA	44/05
11585	Garden Cove Daybeacon 10	DBD DEST	11464	428-05 KWT	38/05
11590	Garden Cove Daybeacon 11	DBD DMGD	11463	429-05 KWT	39/05
11605	Garden Cove Daybeacon 13	DBD DMGD	11464	327-05 KWT	39/05
11615	Garden Cove Daybeacon 15	DBD DMGD	11463	NA	19/06
11695	John Pennekamp Coral Reef Park Buoy F	MISSING	11451	NA	13/06
11705	Carysfort North Reef N Obstruction Daybeacon	DBD DEST	11451	NA	10/06
11730	Grecian Rocks Obstruction Daybeacon	DBN DEST	11451	333 / 553 KWT	39/05
11740	Mosquito Bank Obstruction Daybeacon	DBN DEST	11451	554-05 KWT	47/05
11745	White Bank Obstruction Daybeacon	DBN DEST	11451	332-05 KWT	39/05
11750	French Reef Obstruction Daybeacon	DBN DEST	11451	NA	15/06
11760	Molasses Reef North Obstruction Daybeacon	DBN DEST	11451	N/A	09/06
11765.1	Port Largo Channel Daybeacon 4	DBN DEST	11463	012/329/489 KE	02/05
11765.2	Port Largo Channel Daybeacon 6	DBN DEST	11464	578-05 KWT	52/05
11851	Newport Bay Daybeacon 1	DBN DMGD	11464	488-05 KWT	44/05
11851.4	Newport Bay Daybeacon 5	DBD DEST	11464	484-05 KWT	44/05
11851.5	Newport Bay Daybeacon 6	DBN DEST	11464	485-05 KWT	24/04
11851.6	Newport Bay Daybeacon 7	DBN DMGD	11464	486-05	44/05
11851.8	Newport Bay Daybeacon 9	DBN DEST	11464	487-05 KWT	24/04
11851.9	Newport Bay Daybeacon 10	DBN DEST	11464	N/A	24/04
11852.2	Newport Bay Daybeacon 15	DBN DEST	11464	N/A	24/04
11853.3	Newport Bay Auxiliary Channel Daybeacon 4	MISSING	11464	N/A	09/06
11915	Harborage Yacht Club Entrance Light 2	DBN IMCH/FADED	11451	NA	15/06
11917.5	Mariners Club Marina Daybeacon 8	DBD DEST	11463	328-05 KWT	39/05

11945	Key Largo Ocean Resort Light 2	LT EXT	11451	005-06 KWT	03/06
12501.4	Vaca Cut Daybeacon 8	DBN DEST	11453	140-06 KWT	30/06
12865	Yellow Shark Channel Buoy 17	DBN DEST	11449	NA	40/06
13060	Shell Key Channel Daybeacon 18	DBD DEST	11449	315-05 KEY	39/05
13195	Indian Key Channel Daybeacon 12	DBD DEST	11449	NA	40/06
13345	Lignumvitae Channel Daybeacon 15	DBD DMGD	11449	NA	31/06
13355	Caloosa Cove Channel Light 2	LT EXT/DBN DEST	11442	050-06 KWT	11/06
13365	Caloosa Cove Channel Daybeacon 6	DBD DEST	11442	496-05 KWT	44/05
13920	Ramrod Key Channel Daybeacon 1	MISSING	11446	NA	03/06
14067	Summerland Key Daybeacon 6	DBN IMCH	11445	N/A	28/05
14230	Upper Sugarloaf Sound Daybeacon 11	MISSING	11446	148-06 KWT	32/06
14310	Cudjoe Key Daybeacon 11	DBD DEST	11446	161-06 KWT	34/06
14665	Key West Oceanside Marina Daybeacon 1	DBN IMCH	11446	N/A	09/05
14705	Key West Oceanside Marina Daybeacon 9	DBN IMCH	11445	N/A	12/03
14980.2	Key West Mooring Field Light B	LT IMCH	11447	N/A	39/04
15270	Lake Passage Channel Daybeacon 4	DBN DEST	11441	NA	40/05
15275	Lake Passage Channel Daybeacon 6	DBD DEST	11441	NA	40/05
15290	Lake Passage Channel Daybeacon 10	DBN DEST	11441	088-06 KWT	39/05
15305	Lake Passage Channel Daybeacon 14	DBN DEST	11441	102-06 KWT	22/06
15320	Lake Passage Channel Daybeacon 17	DBD DEST	11441	N/A	40/05
16110	NPS Boat Basin South Channel Daybeacon 2	DBN IMCH	11429	1303-04 STP	35/04
16120	NPS Boat Basin South Channel Daybeacon 4	DBN IMCH	11429	1304-04 STP	48/03
16135	NPS Boat Basin West Channel Daybeacon 1	DBN IMCH	11430	1302-04 STP	35/04
16145	NPS Boat Basin West Channel Daybeacon 4	DBN IMCH	11429	1301-04 STP	35/04
16150	NPS Boat Basin West Channel Daybeacon 5	DBN IMCH	11429	1300-04 STP	48/03
16160	NPS Boat Basin West Channel Daybeacon 7	DBN DEST	11429	1299-04 STP	48/03
16665	Blackwater River Daybeacon 56	DBN DEST	11430	NA	13/06
16905	Caxambas Pass Entrance Light C	DBN DEST	11430	NA	44/05
17105	Isles of Capri Daybeacon 2	DBN IMCH	11430	N/A	48/03
17120	Isles of Capri Daybeacon 5	DBN DEST	11430	NA	13/06
17140	Isles of Capri Daybeacon 9	DBN IMCH	11430	0934-05 STP	13/05
17710	Doctors Pass Daybeacon 1A	MISSING	11430	1160-06 STP	36/06
17760	Doctors Pass Daybeacon 12	MISSING	11430	1161-06 STP	36/06
18995	Alternate Route Channel Daybeacon 3	DBN DEST	11427	N/A	18/03
18995.06	Estero Pointe Channel Daybeacon 12	DBN IMCH	11427	1316-04 STP	35/04
19000	Alternate Route Channel Daybeacon 4	DBN DMGD	11427	NA	13/06
19005	Alternate Route Channel Daybeacon 5	DBN DMGD	11427	NA	13/06
19015	Alternate Route Channel Daybeacon 7	DBN DEST	11427	1319-04 STP	15/04
19025	Alternate Route Channel Daybeacon 9	DBN DEST	11427	N/A	15/04
19030	Alternate Route Channel Daybeacon 10	DBN IMCH	11427	N/A	18/03
19065	Coconut Channel Daybeacon 7	DBN IMCH	11427	N/A	17/04
19080	Coconut Channel Daybeacon 10	DBN DEST	11427	596-04 STP	18/04
19250	Southern Passage Daybeacon 5	DBD DEST	11427	NA	13/06
19270	Southern Passage Daybeacon 9	DBD DEST	11427	NA	13/06
19275	Southern Passage Daybeacon 10	DBN IMCH	11427	N/A	17/04
19280	Southern Passage Daybeacon 11	DBN IMCH	11427	NA	13/06
19300	Southern Passage Daybeacon 15	DBD DEST	11427	NA	51/05
19305	Southern Passage Daybeacon 16	DBN IMCH	11427	1325-04 STP	35/04
19320	Southern Passage Daybeacon 19	DBN IMCH	11427	N/A	35/04
19335	Spring Creek Daybeacon 2	DBD DMGD	11427	NA	13/06

19340	Spring Creek Daybeacon 4	DBN DEST	11427	N/A	28/05
19350	Spring Creek Daybeacon 6	DBN DMGD/DBN IMCH	11427	1001-05 STP	28/05
19360	Spring Creek Daybeacon 8	DBN IMCH/DBD DEST	11427	1002-05 STP	28/05
19365	Spring Creek Daybeacon 9	DBN IMCH	11427	N/A	28/05
19370	Spring Creek Daybeacon 11	DBN DEST	11427	N/A	28/05
19430	Spring Creek Daybeacon 26	DBN IMCH	11427	N/A	28/05
19445	Spring Creek Daybeacon 30	DBN IMCH/DBD DEST	11427	N/A	35/04
19510	Spring Creek Daybeacon 50	DBN DEST	11427	N/A	28/05
20355	Upper Myakka River Daybeacon A	DBN IMCH	11426	N/A	44/04
20450	Ponce De Leon Park Channel Light 2	LT IMCH	11426	N/A	44/04
20460	Ponce De Leon Park Channel Daybeacon 6	DBN DEST	11426	N/A	02/05
20525	Isles Channel Daybeacon 7	DBN IMCH	11426	N/A	02/05
20560	Isles Cross Channel Daybeacon 3	DBN DEST	11426	N/A	02/05
21245	Charlotte Harbor Yacht Club Daybeacon 1	DBN IMCH	11426	N/A	08/04
21250	Charlotte Harbor Yacht Club Daybeacon 2	DBN IMCH	11426	N/A	02/05
21255	Charlotte Harbor Yacht Club Daybeacon 3	DBN IMCH	11426	N/A	08/04
21260	Charlotte Harbor Yacht Club Daybeacon 4	DBN IMCH	11426	N/A	02/05
21265	Charlotte Harbor Yacht Club Daybeacon 5	DBN IMCH	11426	N/A	08/04
21270	Charlotte Harbor Yacht Club Daybeacon 6	DBN IMCH	11426	N/A	02/05
21275	Charlotte Harbor Yacht Club Daybeacon 7	DBN IMCH	11426	N/A	02/05
21280	Charlotte Harbor Yacht Club Daybeacon 8	DBN IMCH	11426	N/A	02/05
21285	Charlotte Harbor Yacht Club Daybeacon 9	DBN IMCH	11426	N/A	08/04
21355	Stump Pass Daybeacon 4	DBN DEST	11425	722-06 STP	22/06
21360	Stump Pass Daybeacon 5	DBN DEST	11425	N/A	22/06
21370	Stump Pass Daybeacon 6	DBN DEST	11425	720-06 STP	22/06
21375	Stump Pass Daybeacon 7	DBN DEST	11425	719-06 STP	22/06
21395	Stump Pass Marina Daybeacon 3	DBN DEST	11425	1669-05 STP	45/05
21400	Stump Pass Marina Daybeacon 4	OFF STA	11425	1670-05 STP	45/05
21405	Stump Pass Marina Daybeacon 5	OFF STA	11425	1671-05 SEC ST	45/05
21410	Stump Pass Marina Daybeacon 6	OFF STA	11425	1672 / 1697 STP	45/05
21415	Stump Pass Marina Light	LT IMCH	11425	N/A	19/03
21456.03	Dona Bay Channel Daybeacon 13	DBN DEST	11425	0874-05 STP	23/05
21456.12	Dona Bay Channel Daybeacon 21	DBN IMCH	11425	0875-05 STP	23/05
21500.1	Big Sarasota Pass Daybeacon 1	DBD DEST	11425	NA	37/05
21505	Big Sarasota Pass Daybeacon 9	DBN DEST	11425	679-06 STP	22/06
21520	Big Sarasota Pass Daybeacon 14	DBN DEST	11425	1267-06 STP	41/06
21567.5	Lido Key Channel Daybeacon 16	DBD DMGD	11425		22/06
21570.2	North Siesta Key Daybeacon 3	DBD DEST	11425	0354-06 STP	11/06
21660	Country Club Shores Daybeacon 2	DBN IMCH	11425	N/A	28/05
21665	Country Club Shores Daybeacon 4	DBN IMCH	11425	N/A	28/05
21670	Country Club Shores Daybeacon 6	DBD DEST	11425	0840-05 STP	23/05
21675	Country Club Shores Daybeacon 8	DBD DMGD	11425		22/06
21680	Country Club Shores Daybeacon 10	DBN IMCH	11425	N/A	28/05
21685	Country Club Shores Daybeacon 12	DBD DEST	11425	N/A	28/05
21690	Country Club Shores Daybeacon 14	DBN DEST	11425	N/A	28/05
21950	Fifty-Ninth Street Boat Ramp Daybeacon 3	DBN DEST	11415	N/A	28/05
22815.5	MacDill Air Force Base Prohibited Area Daybeacon (24)	DBN DEST	11416	N/A	24/03

23135	Big Bend Channel East Upper Range Rear Light	LT EXT	11400	1031-06 STP	29/06
23950.5	Old Tampa Bay Pipeline West Light	LT EXT	11416	NA	13/06
23985	Culbreath Cay Daybeacon 1	DBN DEST	11416	0876-05 STP	13/05
23990	Culbreath Cay Daybeacon 2	DBN DEST	11416	0877-05 STP	13/05
23995	Culbreath Cay Daybeacon 4	DBN DEST	11416	N/A	13/05
24005	Culbreath Cay Daybeacon 6	DBN IMCH	11416	856-04 STP	26/04
24015	Culbreath Cay Daybeacon 8	DBN DEST	11416	857-04 STP	26/04
24040	Bridgeview Channel Daybeacon 1	DBN DEST	11416	N/A	13/05
24050	Bridgeview Channel Daybeacon 3	DBN DMGD	11416	N/A	14/01
24055	Bridgeview Channel Daybeacon 4	DBN IMCH	11416	390-04 STP	12/04
24195	Dana Shores Daybeacon 6	DBN DEST	11416	1461-06 STP	47/06
24250	Dana Shores Daybeacon 22	DBN DMGD	11416	1462-06 STP	47/06
24265	Bay Crest Daybeacon 3	MISSING	11416	1456-06 STP	47/06
24270	Bay Crest Daybeacon 4	DBN DMGD	11416	1457-060 STP	47/06
24280	Bay Crest Daybeacon 6	DBN DMGD	11416	1458-06	47/06
24340	Cabbagehead Bayou Daybeacon 12	DBN DEST		1204-06 STP	38/06
24620	Apollo Beach Jetty Obstruction Daybeacon	DBN DEST	11416	NA	45/06
24625	Apollo Beach Daybeacon 4	DBN DMGD	11416	1463-06 STP	47/06
24653	Symphony Isles Danger Daybeacon	DBN IMCH	11416	1464-06 STP	47/06
25430	Bunces Pass Daybeacon 12	HAZ NAV/DBN DEST	11415	1333-06 STP	43/06
25510.1	Dent Channel Daybeacon 2	DBN DEST	11411	0538-06 STP	18/06
25515	Dent's Channel Daybeacon 3	TRLB	11415	1200-05 STP	29/05
25555	South Dent Channel Daybeacon 7	DBN DEST	11411	N/A	24/03
25600.01	Treasure Island North Terminal Groin Obstruction Light	LT EXT	11411	1089-06 STP	33/06
25655	Clearwater Beach Lighted Buoy A	OFF STA	11412	N/A	11/05
25660	Clearwater Beach Lighted Buoy B	OFF STA	11412	N/A	11/05
25665	Clearwater Beach Lighted Buoy C	OFF STA	11412	0936-05 STP	11/05
25670	Clearwater Beach Lighted Buoy D	OFF STA	11412	0935-05 STP	11/05
25675	Clearwater Beach Lighted Buoy E	OFF STA	11412	N/A	11/05
27080	Hudson Creek Daybeacon 18	DBN DEST	11409	NA	18/06
27190	Sea Pines Channel Daybeacon 14	DBN DEST	11409	NA	13/06
27495	Hernando Beach Channel Entrance Light	LT EXT	11409	1282-06 STP	42/06
27795	Hernando Beach Channel Shoal Daybeacon	DBN DEST	11409	1273-06 STP	42/06
27905	Hernando Beach Channel Daybeacon 100	DBD DMGD	11409	1280-06 STP	42/06
27910	Hernando Beach Channel Daybeacon 102	DBN DEST	11409	1281-06 STP	42/06
28085	Bayport Channel Daybeacon 16	DBN DMGD	11409	1277-06 STP	42/06
28715	Homosassa River Daybeacon 2	DBD DMGD/DBD DEST	11409	1237-06 STP	40/06
28915	Salt River Daybeacon 2	DBN IMCH	11409	NA	13/06
28920	Salt River Daybeacon 3	DBN IMCH	11409	NA	13/06
28925	Salt River Daybeacon 5	DBN IMCH	11409	NA	13/06
28930	Salt River Daybeacon 6	DBN IMCH	11409	NA	13/06
28935	Salt River Daybeacon 7	DBN IMCH	11409	NA	13/06
28940	Salt River Daybeacon 8	DBN DMGD/DBN IMCH	11409	0418-06 STP	13/06
28945	Salt River Daybeacon 9	DBN IMCH	11409	NA	13/06
28950	Salt River Daybeacon 10A	DBN IMCH	11409	NA	13/06
28960	Florida Power Corporation Channel Light 3	LT EXT	11408	1328-06 STP	42/06
28965	Florida Power Corporation Channel Light 4	DBN IMCH	11408	1284-06 STP	38/06
28975	Florida Power Corporation Channel Light 6	LT IMCH	11408	1285-06 STP	42/06
28985	Florida Power Corporation Channel Light 8	LT IMCH	11408	1286-06 STP	42/06

28990	Florida Power Corporation Channel Light 9	LT IMCH	11408	1287-06 STP	42/06
28995	Florida Power Corporation Channel Light 10	LT EXT	11408	1288-06 STP	38/06
29000	Florida Power Corporation Channel Light 12	LT IMCH	11408	1289-06 STP	42/06
29005	Florida Power Corporation Channel Light 13	LT IMCH	11408	1290-06 STP	42/06
29015	Florida Power Corporation Channel Light 16	LT IMCH	11408	1292-06 STP	42/06
29020	Florida Power Corporation Channel Light 17	LT IMCH	11408	1293-06 STP	42/06
29025	Florida Power Corporation Channel Light 18	LT IMCH	11408	1294-06 STP	42/06
29040	Florida Power Corporation Channel Light 23	LT IMCH	11408	1297-06 STP	42/06
29045	Florida Power Corporation Channel Light 25	LT IMCH	11408	1298-06 STP	42/06
29050	Florida Power Corporation Channel Light 26	LT IMCH	11408	1299-06 STP	42/06
29055	Florida Power Corporation Channel Light 27	LT IMCH	11408	1300-06 STP	42/06
29065	Florida Power Corporation Channel Light 29	LT IMCH	11408	1301-06 STP	42/06
29070	Florida Power Corporation Channel Light 31	LT IMCH	11408	1302-06 STP	42/06
29085	Florida Power Corporation Channel Light 34	LT EXT	11408	1304-06 STP	42/06
29090	Florida Power Corporation Channel Light 35	LT IMCH	11408	1305-06 STP	42/06
29095	Florida Power Corporation Channel Light 36	LT IMCH	11408	1306-06 STP	42/06
29100	Florida Power Corporation Channel Light 37	LT EXT	11408	1307-06 STP	38/06
29120	Florida Power Corporation Channel Light 41	LT IMCH	11408	NA	42/06
29135	Florida Power Corporation Channel Light 44	LT IMCH	11408	1310-06 STP	42/06
29140	Florida Power Corporation Channel Light 45	LT EXT	11408	1311-06 STP	38/06
30085	Suwannee River Alligator Pass Light 2	DBD DEST	11408	NA	17/06
30170	Suwannee River McGriff Pass Daybeacon 1	LT EXT	11408	NA	13/06
30270	Salt Creek Daybeacon 2	HAZ NAV/DBN DEST	11408	NA	13/06
30280	Salt Creek Daybeacon 5	DBD DMGD	11408	NA	13/06
30315	Salt Creek Daybeacon 17	HAZ NAV/DBN DEST	11408	1373-05 STP	35/05
30330	Salt Creek Daybeacon 21	DBN DMGD	11408	NA	13/06
30690	Cedar Island Daybeacon 1	DBN DMGD	11407	506-01 STP	28/01
30695	Cedar Island Daybeacon 2	DBN DMGD	11407	507-01 STP	28/01
30825	TMT Outer Dolphin Obstruction Light	LT EXT	25670	319-05 SJN	47/05
30830	TMT Middle Dolphin Obstruction Light	LT EXT	25670	320-05 SJN	47/05
31230	Sea Lovers Pier Buoy West Light	LT EXT	25667	N/A	41/04
31335.1	Puerto del Ray North Channel Lighted Buoy 6	LT EXT	25663	231-06 SJN	37/06
31535	Sonda de Vieques Obstruction Lighted Buoy LAE	MISSING	25664	N/A	16/97
31915	Aguirre Power Plant Lighted Buoy 6	LT EXT	25687	096-06 SJN	16/06
32420	Redhook Bay Buoy 1	BUOY DMGD	25647	365-02 GAN	45/02
32425	Redhook Bay Buoy 2	OFF STA	25647	N/A	45/04
32430	Redhook Bay Buoy 3	DBN DMGD	25647	NA	19/06
32440	Redhook Bay Junction Buoy P	OFF STA	25647	N/A	45/04
32450	Redhook Bay South Channel Buoy 2	OFF STA	25647	N/A	45/04
32455	Redhook Bay Buoy 5	MISSING	25647	NA	19/06
32460	Redhook Bay Buoy 6	MISSING	25647	N/A	45/04

32780	Cruz Bay Buoy 1	MISSING	25647	359-02 GAN	45/02
32805	Cruz Creek Channel Buoy 1C	MISSING	25647	360-02 GAN	45/02
32810	Cruz Creek Channel Buoy 2C	MISSING	25647	NA	19/06
32950	Christiansted Schooner Channel Lighted Buoy 5	OFF STA	25645	234-06 SJN	37/06
32985	Christiansted Schooner Lighted Buoy 11	LT IMCH	25645	031-05 GAN	06/05
33200	Lime Tree Bay Port Basin Light 15	LT EXT	25641	067-06 SJN	13/06
33315	Krause Lagoon Cross Channel Lighted Buoy 1	MISSING	25641	065-06 SJN	13/06
33365	Frederiksted Pier South Light	LT EXT	25644	233-04 GAN	35/04
34745	Johns Island Dock Obstruction Light	LT EXT/DBN DEST	11518	N/A	27/04
35425	Marsh Harbor Marina Daybeacon 4	DBD DMGD	11518	N/A	51/04
35585	Trenchards Inlet Tide Gauge Daybeacon	DBN IMCH	11516	N/A	03/04
35590	Station Creek West Tide Gauge Daybeacon	DBN DEST	11516	N/A	03/04
35630	Ribaut Island Dock Light G	LT EXT	11507	N/A	04/05
36232	Delegal Creek Channel Buoy 3	MISSING	11507	N/A	28/05
36233	Delegal Creek Channel Buoy 4	MISSING	11507	N/A	28/05
36235	Delegal Creek Channel Buoy 5	BUOYDMGD	11507	N/A	28/05
38843.6	Vilano Marina North Channel Daybeacon 4	DBN IMCH	11485	N/A	06/04
42130	Indian Cove Marina Daybeacon 1	DBN DEST	11485	N/A	17/04
42135	Indian Cove Marina Daybeacon 2	DBN IMCH	11485	N/A	17/04
42290	Diamond 99 Marina Daybeacon 1	DBD DEST	11485	NA	14/06
42300	Diamond 99 Marina Daybeacon 3	DBD DEST	11472	NA	14/06
42310	Diamond 99 Marina Daybeacon 5	DBD DEST	11472	NA	14/06
42490.1	Manatee Cove Marina Daybeacon 1	DBN DEST	11476	N/A	31/04
42490.3	Manatee Cove Marina Daybeacon 3	DBN IMCH	11476	N/A	02/05
42491	Manatee Cove Marina Range Front Light	LT EXT	11476	N/A	19/04
42492	Manatee Cove Marina Range Rear Light	LT EXT/DBN DEST	11476	N/A	44/04
42830	Central Avenue Entrance Channel Light 2	LT EXT	11476	480-05 JAX	49/05
43030	Kelly Park Channel Light 1	LT EXT	11476	N/A	16/04
43045	Kelly Park Channel Daybeacon 4	DBN DEST	11476	NA	13/06
43055	Kelly Park Channel Daybeacon 7	DBN DEST	11476	NA	13/06
43115	Intracoastal Marina Channel Daybeacon 1	DBN IMCH	11476	N/A	07/05
43120	Intracoastal Marina Channel Daybeacon 2	DBN IMCH	11476	N/A	07/05
43125	Intracoastal Marina Channel Daybeacon 3	DBN DEST	11476	N/A	14/05
43135	Intracoastal Marina Channel Daybeacon 5	DBN IMCH	11476	N/A	14/05
43140	Intracoastal Marina Channel Daybeacon 6	DBN IMCH	11476	N/A	14/05
43145	Intracoastal Marina Channel Daybeacon 7	DBN IMCH	11476	N/A	14/05
43160	Intracoastal Marina Channel Daybeacon 10	DBN IMCH	11476	N/A	14/05
43350	Tucker Channel Daybeacon 1	DBN DMGD	11472	N/A	19/04
43355	Tucker Channel Daybeacon 2	DBN DMGD	11472	N/A	19/04
43575	Coconut Point Daybeacon 1	DBN IMCH	11472	N/A	44/04
43580	Coconut Point Daybeacon 2	DBN IMCH	11472	N/A	44/04
43585	Coconut Point Daybeacon 3	DBN IMCH	11472	N/A	11/05
43590	Coconut Point Daybeacon 4	DBN IMCH	11472	N/A	11/05
43595	Coconut Point Daybeacon 5	DBN IMCH	11472	N/A	11/05
43600	Coconut Point Daybeacon 6	DBN IMCH	11472	N/A	44/04
43685.2	Channel 68 Marina Daybeacon 2	DBN DEST	11472	N/A	10/03
43700	River Run Daybeacon 1	DBN IMCH/DBD DEST	11472	N/A	17/05
43710	River Run Daybeacon 3	DBN IMCH/DBD DEST	11472	N/A	17/05

43720	River Run Daybeacon 5	DBN IMCH	11472	N/A	21/05
44005	Grand Harbor Marina Daybeacon 8	DBN IMCH	11472	N/A	28/05
44025	Grand Harbor Marina Daybeacon 12	DBN IMCH	11472	N/A	28/05
44035	Grand Harbor Marina Daybeacon 14	DBN DEST	11472	N/A	28/05
44045	Grand Harbor Marina Daybeacon 16	DBN IMCH	11472	N/A	28/05
44065	Bermuda Bay Daybeacon 1	DBN DEST/DBN IMCH	11472	N/A	08/04
44070	Bermuda Bay Daybeacon 2	DBN IMCH	11472	N/A	28/05
44075	Bermuda Bay Daybeacon 3	DBN IMCH	11472	N/A	28/05
44080	Bermuda Bay Daybeacon 4	DBN DEST	11472	N/A	29/05
44085	Bermuda Bay Daybeacon 5	DBN IMCH	11472	N/A	10/03
44090	Bermuda Bay Daybeacon 6	DBN DEST	11472	N/A	28/05
44095	Bermuda Bay Daybeacon 7	DBN IMCH	11472	N/A	28/05
44105	Bermuda Bay Daybeacon 9	DBN IMCH	11472	N/A	28/05
44110	Bermuda Bay Daybeacon 10	DBN DEST/DBN IMCH	11472	N/A	08/04
44115	Bermuda Bay Daybeacon 11	DBN IMCH	11472	N/A	10/03
44120	Bermuda Bay Daybeacon 12	DBN IMCH	11472	N/A	08/04
44235	Vero Marine Center Daybeacon 6	DBD DEST	11476	NA	13/06
44845	Linkport Channel Daybeacon 1	DBN DEST	11472	NA	36/06
44848	Linkport Channel Daybeacon 2	DBD DEST	11472	NA	36/06
44850	Linkport Channel Daybeacon 3	DBD DEST	11472	NA	36/06
44855	Linkport Channel Daybeacon 4	DBD DEST	11472	NA	38/06
44860	Linkport Channel Daybeacon 5	DBN DEST	11472	NA	38/06
44870	Linkport Channel Daybeacon 7	MISSING	11472	NA	38/06
44875	Linkport Channel Daybeacon 8	DBD DEST	11472	NA	38/06
44980	Village Marina Daybeacon 1	DBN DEST	11476	N/A	27/04
45540	Fairwinds Cove Daybeacon 7	DBN IMCH	11476	N/A	15/04
45560	Fairwinds Cove Daybeacon 12	DBN IMCH	11476	N/A	15/04
45585	Rigels Cove Channel Daybeacon 1	DBN IMCH	11472	N/A	15/04
45590	Rigels Cove Channel Daybeacon 2	DBN IMCH	11472	N/A	15/04
45595	Rigels Cove Channel Daybeacon 3	DBN IMCH	11472	N/A	15/04
45600	Rigels Cove Channel Daybeacon 4	DBN IMCH	11472	N/A	15/04
45605	Rigels Cove Channel Daybeacon 5	DBN IMCH	11472	N/A	15/04
45610	Rigels Cove Channel Daybeacon 6	DBN IMCH	11472	N/A	15/04
45615	Rigels Cove Channel Daybeacon 7	DBN DEST	11472	N/A	15/04
45620	Rigels Cove Channel Daybeacon 8	DBN IMCH	11472	N/A	15/04
45625	Rigels Cove Channel Daybeacon 9	DBN IMCH	11472	N/A	15/04
45630	Rigels Cove Channel Daybeacon 10	DBN IMCH	11472	N/A	15/04
45790	Anglers Cove Daybeacon 1	DBN DEST	11476	N/A	19/04
45795	Anglers Cove Daybeacon 2	DBN DEST	11476	N/A	19/04
45800	Anglers Cove Daybeacon 3	DBN DEST	11476	N/A	19/04
45805	Anglers Cove Daybeacon 4	DBN DEST	11476	N/A	19/04
45810	Anglers Cove Daybeacon 6	DBN DEST	11476	N/A	19/04
45980	Miles Grant Daybeacon 2	DBN IMCH	11476	N/A	21/04
46005	St Lucie Inlet State Park Channel Daybeacon 1	DBD DEST	11476	646-05 MIA	45/05
46010	St Lucie Inlet State Park Channel Daybeacon 2	DBD DEST	11476	647-05 MIA	45/05
46625	New Port Cove Marine Ctr Daybeacon 3	DBN DEST	11472	N/A	28/05
46630	New Port Cove Marine Ctr Daybeacon 4	DBN DEST	11472	N/A	28/05
46640	New Port Cove Marine Ctr Daybeacon 6	DBN DEST	11472	N/A	28/05
46650	New Port Cove Marine Ctr Daybeacon 8	DBN DEST	11472	NA	51/05
46855	West Palm Beach Daybeacon 1	DBN IMCH	11476	N/A	28/05
46865	West Palm Beach Daybeacon 3	DBN DEST	11476	N/A	28/05
47640	Golden Gates Marina South Obstruction Light	DBN DEST	11467	499-05 MIA	37/05
47645	Williams Island Daybeacon 1	DBN DEST	11467	286-03 MIA	22/03
47850	Keystone Point Channel Daybeacon 4	DBN DEST	11467	307-06 MIA	24/06

47880	Keystone Point Channel Daybeacon 16	DBN DEST	11467	308-06	24/06
48250	Miami Shores Channel Daybeacon 8	MISSING	11467	075-06	05/06
48500	Claughton Island North Obstruction Daybeacon	DBN DMGD	11465	330-06 MIA	27/06
48505	Claughton Island Middle Obstruction Daybeacon	DBN DEST	11465	637-04 MIA	51/04
48570	Villa Regina Daybeacon 5	DBN DEST	11465	587-03 MIA	49/03
48620	Deering Channel Daybeacon 3	DBN DEST	11465	437-06 MIA	38/06
48640	Deering Channel Daybeacon 7	MISSING	11465	438-06 MIA	38/06
48845	Crandon Park Marina Channel Light 14	DBN DEST	11467	540-06 MIA	43/06
49040	Dinner Key Marina South Channel Light 13	LT EXT	11465	406-06 MIA	35/06
49085	Key Biscayne Yacht Club Light 4	LT IMCH	11465	597-02 MIA	49/02
49160	Four Way Channel Directional Daybeacon	DBN DEST	11465	N/A	39/97
49190	Four Way Channel Daybeacon 8	DBN DEST	11465	065-03 MIA	05/03
49225	Hughes Cove East Obstruction Daybeacon	DBN DMGD	11465	N/A	24/98
49245	Entrada Channel Daybeacon 3	DBN DEST	11465	340-04 MIA	29/04
49340	Gables Estates Light 2	DBD DEST	11465	NA	17/06
49345	Gables Estates Daybeacon 2A	DBD DEST	11465	NA	17/06
49350	Gables Estates Daybeacon 3	DBD DEST	11465	NA	17/06
49360	Gables Estates Daybeacon 5	DBD DEST	11465	NA	17/06
49678.5	Boca Chita Channel Buoy 4	MISSING	11465	NA	42/06
49679.5	Boca Chita Channel Buoy 6	MISSING	11465	NA	42/06
49790	Black Point Channel Daybeacon 12	DBN IMCH/NUM MSNG/DAMGD	11464	NA	42/06
49805	Black Point Channel Daybeacon 15	DBN DEST	11464	NA	42/06
49815	Black Point Channel Daybeacon 17	MISSING	11464	NA	42/06
49865	Convoy Point Light 1	LT EXT	11467	603-06 MIA	47/06
49870	Convoy Point Light 2	LT EXT	11467	604-06 MIA	47/06
49955	Turkey Point Channel Light 2	LT EXT/DBD DEST	11464	182-06 MIA	15/06
49955	Turkey Point Channel Light 2	LT EXT/DBN DEST	11464	182-06 MIA	35/05
49975	Turkey Point Channel Buoy 4A	MISSING	11464	461-05 MIA	38/05
49995	Turkey Point Channel Buoy 8	LT EXT	11464	520-06 MIA	41/06
50160	Grayvik Daybeacon 1	DBN IMCH	11451	N/A	28/05
50170	Grayvik Daybeacon 3	DBN IMCH/FADED	11451	NA	17/06
50175	Grayvik Daybeacon 4	DBN DEST	11451	NA	17/06
50295	The Moorings Daybeacon 2	DBN DEST	11451	NA	19/06
50300	The Moorings Daybeacon 3	DBD DEST	11451	NA	19/06
50305	The Moorings Daybeacon 4	DBD DEST	11451		19/06
50505.05	Hammer Point Harbor Obstruction Daybeacon C	MISSING	11463	NA	09/06
50505.06	Hammer Point Harbor Obstruction Daybeacon D	MISSING	11463	NA	09/06
50506.02	Hammer Point Harbor Obstruction Daybeacon J	DBN DMGD	11463	NA	09/06
50506.08	Hammer Point Harbor Obstruction Daybeacon P	MISSING	11463	N/A	09/06
50506.09	Hammer Point Harbor Obstruction Daybeacon Q	MISSING	11463	NA	09/06
50905	St. Lucie River (North Fork) Daybeacon 11	DBN IMCH	11428	N/A	04/03
50915	St. Lucie River (North Fork) Daybeacon 13	DBN DMGD/DBD DEST	11428	723-05 MIA	47/05
50955	St. Lucie River (North Fork) Daybeacon 25	DBD DEST	11428	NA	13/06
51975	Buckhead Ridge Canal Light BR	LT IMCH	11428	N/A	53/02
52385	Admiralty Yacht Club Daybeacon 8	DBN IMCH	11428	1716-04 STP	43/04
52420	Indian Creek Daybeacon 1	DBN IMCH	11428	1717-04 STP	43/04
52435	Indian Creek Daybeacon 4	DBN IMCH	11428	N/A	39/04

52440	Indian Creek Daybeacon 5	DBN IMCH	11428	N/A	39/04
52445	Indian Creek Daybeacon 6	DBN IMCH	11428	N/A	39/04
52450	Indian Creek Daybeacon 7	DBN IMCH	11428	1718-04 STP	39/04
52455	Indian Creek Daybeacon 8	DBN IMCH	11428	N/A	39/04
52460	Indian Creek Daybeacon 9	DBN IMCH	11428	N/A	39/04
52465	Indian Creek Daybeacon 10	DBN IMCH	11428	N/A	39/04
52660	Marinatown Daybeacon 2	DBN DEST	11428	0559-06 STP	42/04
52685	Marinatown Daybeacon 7	DBN IMCH	11428	N/A	39/04
52745	Marinatown Daybeacon 19	DBN IMCH/DBD DEST	11428	0564-06 STP	39/04
52775	Marinatown Daybeacon 25	DBN DEST	11428	0566-06 STP	39/04
52821	Caloosa Isle Marina Daybeacon 1	DBN DEST	11427	NA	14/06
53515	McGregor Isles Daybeacon 5	MISSING	11427	0569-06 STP	18/06
53565	Harney Point Rim Channel Daybeacon 8	DBN DEST	11427	N/A	27/04
53590	Harney Point Rim Channel Daybeacon 14	DBD DMGD	11427	NA	14/06
54135	Redfish Point Rim Channel Light 20	LT EXT	11427	NA	14/06
54195	Peppertree Pointe E Obstruction Daybeacon	DBD DMGD	11427	0926-06 STP	27/06
54210	Peppertree Pointe Daybeacon 3	DBD DEST	11427	0925-06 STP	14/06
54220	Peppertree Pointe Daybeacon 5	DBD DEST	11427	0924-06 STP	14/06
54225	Peppertree Pointe Daybeacon 6	DBD DMGD	11427	0923-06 STP	27/06
54230	Peppertree Pointe Daybeacon 7	DBD DMGD	11427	0922-06 STP	27/06
54235	Peppertree Pointe Daybeacon 8	DBD DMGD	11427	0921-06 STP	27/06
54240	Peppertree Pointe Daybeacon 9	DBD DMGD	11427	0920-06 STP	27/06
54298	Van Riper Channel Daybeacon 10	DBN DEST	11427	NA	14/06
54298.5	Van Riper Channel Daybeacon 12	DBN DEST	11427	NA	14/06
54560	Saint Charles Harbour Daybeacon 15	DBD DMGD	11427	0939-06 STP	27/06
54590	Saint Charles Harbour Daybeacon 21	DBD DMGD	11427	0937-06 STP	27/06
54730	Shell Point Village Daybeacon 5	DBN IMCH	11427	N/A	28/05
54930	Manatee Bay Property Channel Daybeacon 1	DBN IMCH/STRUCT DEFAC	11427	0940-06 STP	27/06
55315	Paradise Canal Daybeacon 2	DBD DEST	11427	0929-06 STP	14/06
55320	Paradise Canal Daybeacon 3	DBD DEST	11427	0930-06 STP	14/06
55325	Paradise Canal Daybeacon 4	DBD DEST	11427	0931-06 STP	14/06
55815	South Seas Plantation Daybeacon 8	DBD DEST	11427	0935-06 STP	27/06
55880	South Seas Plantation Daybeacon 21	DBD DEST	11427	0936-06 STP	10/06
56230	Wilson Cut Channel Daybeacon 1	TRUB	11427	N/A	43/04
56235	Wilson Cut Channel Daybeacon 2	TRUB	11427	N/A	43/04
56245	Wilson Cut Channel Daybeacon 4	TRUB	11427	N/A	43/04
56250	Wilson Cut Channel Daybeacon 5	TRUB	11427	N/A	43/04
56255	Wilson Cut Channel Daybeacon 6	DBN IMCH	11427	N/A	43/04
56265	Wilson Cut Channel Daybeacon 8	TRUB	11427	N/A	43/04
56290	Wilson Cut Channel Daybeacon 13	TRUB	11427	N/A	43/04
56310	Wilson Cut Channel Daybeacon 17	DBN IMCH	11427	N/A	43/04
56778	Placida Pier Northeast Obstruction Light	LT EXT	11425	990-02 STP	33/02
56778.5	Placida Pier Southeast Obstruction Light	LT EXT	11425	990-02 STP	33/02
57295	Daughtrey Landing Daybeacon 3	DBN DEST	11425	724-06 STP	21/05
57358.3	Gottfried Creek Daybeacon 22	DBN DEST	11425	0968-06 STP	17/04
57359.7	Englewood Channel Daybeacon 12	DBN IMCH	11425	N/A	21/03
57370	Bayview Channel Daybeacon 1	DBN IMCH	11425	0959-06 STP	18/05
57375	Bayview Channel Daybeacon 2	DBN DEST	11425	0958-06 STP	17/04
57380	Bayview Channel Daybeacon 3	DBN DEST	11425	0957-06 STP	18/04
57385	Bayview Channel Daybeacon 4	DBN DMGD	11425	0956-06 STP	18/04
57390	Bayview Channel Daybeacon 5	DBN DEST	11425	0955-06 STP	18/04
57395	Bayview Channel Daybeacon 6	DBN IMCH	11425	0954-06 STP	17/04
57400	Bayview Channel Daybeacon 7	DBN DMGD	11425	0953-06 STP	18/04
57405	Bayview Channel Daybeacon 8	DBN DMGD	11425	0952-06 STP	18/04

57410	Bayview Channel Daybeacon 9	DBN DMGD	11425	0951-06 STP	18/04
57415	Bayview Channel Daybeacon 10	DBN DMGD	11425	0950-06 STP	18/04
57440	Indian Mound Pk Daybeacon 2	DBN DEST	11425	0969-06 STP	28/05
57470	Royal Palm Marina Buoy 1	BUOYDMGD	11425	0943-06 STP	21/04
57475	Royal Palm Marina Buoy 2	MISSING	11425	0949-06 STP	28/05
57480	Royal Palm Marina Buoy 4	MISSING	11425	0948-06 STP	28/05
57485	Royal Palm Marina Buoy 5	MISSING	11425	N/A	28/05
57490	Royal Palm Marina Buoy 6	BUOYDMGD	11425	0945-06 STP	28/05
57495	Royal Palm Marina Buoy 8	MISSING	11425	0944-06 STP	28/05
57500	Royal Palm Marina Buoy 10	ADRIFT	11425	0967-06 STP	28/05
57505	Royal Palm Marina Buoy 11	MISSING	11425	0966-06 STP	28/05
57510	Royal Palm Marina Buoy 12	BUOYDMGD	11425	0965-06 STP	28/05
57515	Royal Palm Marina Buoy 13	BUOYDMGD	11425	0964-06 STP	28/05
57520	Royal Palm Marina Buoy 14	BUOYDMGD	11425	0963-06 STP	28/05
57525	Royal Palm Marina Buoy 15	MISSING	11425	0962-06 STP	28/05
57530	Royal Palm Marina Buoy 16	MISSING	11425	0960-06 STP	28/05
57535	Royal Palm Marina Buoy 18	BUOYDMGD	11425	0961-06 STP	28/05
57570	Lemon Bay Daybeacon 3	DBD DMGD	11425	714-06 STP	22/06
57619.5	Forked Creek Southeast Obstruction Daybeacon	DBN DEST	11425	715-06 STP	28/05
58175	Midnight Pass Lagoon Daybeacon 2	DBN IMCH	11425	N/A	13/05
58205.4	Midnight Pass Daybeacon 15	DBN DEST	11425	1893-05 STP	51/05
58530	Sarasota Bay Artificial Reef Daybeacon E	DBN DEST	11425	N/A	10/04
58540	Tony Saprito Fishing Pier South Light	LT EXT	11425	N/A	28/05
58545	Tony Saprito Fishing Pier North Light	LT EXT	11425	N/A	28/05
58645	Bay Isles South Channel Daybeacon 2	DBN IMCH	11425	NA	22/06
58655	Bay Isles South Channel Daybeacon 6	DBN IMCH	11425	0847-05 STP	23/05
58665	Bay Isles South Channel Daybeacon 10	DBN IMCH	11425	NA	22/06
58667.35	Bay Isles Perimeter Channel Daybeacon 12	DBN DMGD	11425	699-06 STP	28/05
58667.6	Bay Isles Perimeter Channel Daybeacon 20	DBN IMCH/STRUCT DEFAC	11425	697-06 STP	22/06
58667.65	Bay Isles Perimeter Channel Daybeacon 22	DBN IMCH/STRUCT DEFAC	11425	698-06	22/06
58680	Longboat Key Moorings Light 1	LT EXT	11425	0576-06 STP	18/06
58685	Longboat Key Moorings Light 2	MISSING	11425	0578 / 706-06	28/05
58690	Longboat Key Moorings Daybeacon 3	DBN DEST	11425	N/A	17/04
58710	Longboat Key Moorings Daybeacon 7	DBD DEST	11425	705-06 STP	22/06
58715	Longboat Key Moorings Daybeacon 8	DBD DEST	11425	704-06 STP	22/06
58725	Longboat Key Moorings Daybeacon 10	DBN IMCH	11425	N/A	18/05
58730	Longboat Key Moorings Daybeacon 11	DBN IMCH	11425	N/A	18/05
58740	Sarasota Bay Obstruction Daybeacon	DBN IMCH	11425	703-06 STP	39/04
59030	Longboat Harbor Channel Daybeacon 11	DBD DMGD	11425	696-06 STP	22/06
59145	Longboat Harbor North Marina Daybeacon 6	DBD DEST	11425	729-06 STP	22/06
59195	Cannons Marina DBN 2	DBN IMCH/STRUCT DEFAC	11425	690-06 STP	22/06
59245	Buccaneer Inn Daybeacon 10	DBN DEST	11425	698-06 STP	22/06
59265	Buccaneer Inn Daybeacon 14	DBD DMGD	11425	688-06 STP	22/06
59270	Buccaneer Inn Daybeacon 16	DBD DMGD	11425	687-06 STP	22/06
59280	Buccaneer Inn Daybeacon 18	DBN IMCH	11425	0982-06 STP	21/05
59305	Buccaneer Inn Daybeacon 26	DBN DMGD	11425	0981-06 STP	23/05
59410	Coral Shores Channel Daybeacon 10	DBD DEST	11425	0547-06 STP	18/06
59420	Coral Shores Channel Daybeacon 12	DBN DEST	11425	0979-06 STP	28/05
59425	Coral Shores Channel Daybeacon 13	DBN IMCH/FADED	11425	0548-06 STP	18/06
59435	Coral Shores Channel Daybeacon 15	DBD DEST	11425	0978-06 STP	18/06
59450	Coral Shores Channel Daybeacon 18	DBN DEST	11425	0977-06 STP	19/06
59465	Coral Shores Channel Daybeacon 21	DBN DEST	11425	0976-06 STP	28/05

59485	Coral Shores Channel Daybeacon 25	DBN IMCH	11425	0546-06 STP	28/05
59510	Coral Shores Channel Daybeacon 30	DBN IMCH	11425	0975-06 STP	27/06
59540	Mt Vernon & Coral Shores Daybeacon 2N	DBN IMCH	11425	N/A	28/05
59650	Cove Sound Moorings Daybeacon 1	DBD DEST	11425	0915-06 STP	27/06
59655	Cove Sound Moorings Daybeacon 2	DBD DEST	11425	0916-06 STP	27/06
59657	Cove Sound Moorings Channel Daybeacon 3	DBD DEST	11425	0941-06 STP	27/06
59657.5	Cove Sound Moorings Channel Daybeacon 4	DBD DEST	11425	0942-06 STP	27/06
59660	Palma Sola Bay Channel Daybeacon 7	DBN IMCH	11425	N/A	18/03
59730	Perico Bayou Channel Daybeacon 12	DBN IMCH	11415	N/A	19/04
59745	Perico Bayou Channel Daybeacon 14A	DBN DMGD	11415	N/A	19/04
59785	San Remo Shore Channel Daybeacon 8	DBN DEST	11425	678-06 STP	22/06
59815	Palma Sola Bay Channel Daybeacon 9	DBN DEST	11425	0283-06 STP	09/06
59860	Palma Sola Bay Channel Daybeacon 18	DBD DEST	11425	0914-06 STP	27/06
60010	Kingfish Boat Ramp Daybeacon 2	DBD DMGD	11415	0416-06 STP	14/06
60020	Kingfish Boat Ramp Daybeacon 5	DBN DMGD	11415	0599-06 STP	14/06
60025	Kingfish Boat Ramp Daybeacon 6	DBD DEST	11415	1562-04 834-06	39/04
60030	Kingfish Boat Ramp Daybeacon 7	DBD DMGD	11415	0598-06 STP	14/06
60035	Kingfish Boat Ramp Daybeacon 8	DBD DEST	11425	0412-06 STP	14/06
60045	Kingfish Boat Ramp Daybeacon 10	DBD DEST	11415	0413-06 STP	14/06
60050	Kingfish Boat Ramp Daybeacon 11	DBD DEST	11415	0414-06 STP	14/06
60055	Kingfish Boat Ramp Daybeacon 12	DBN IMCH	11415	N/A	21/03
60190	Anna Maria Channel Daybeacon 1	DBD DMGD	11415	0539-06 STP	17/06
60245	Anna Maria Channel Daybeacon 12	DBN IMCH	11415	0910-06 STP	05/05
60250	Anna Maria Channel Shoal Daybeacon A	DBN IMCH	11415	N/A	05/05
60640	Bayway Isles Channel Daybeacon 5	DBN IMCH	11411	0940-05 STP	13/05
60670	Bayway Isles Channel Daybeacon 14	DBN IMCH	11411	N/A	13/05
60755	Pasadena Yacht Club Channel Daybeacon 1	DBD DMGD	11411	NA	13/06
61165	Jungle Beach Daybeacon 1	DBD DMGD	11411	1278-06 STP	42/06
61190	Jungle Beach Daybeacon 6	DBN DEST		1279-06 STP	42/06
62245	Tarpon Cove Daybeacon 20	DBD DMGD	11411	NA	17/06
	Ribaut Island Dock Light A	LT EXT	11507	N/A	04/05
	Ribaut Island Dock Light C	LT EXT	11507	N/A	04/05
	Upper Cooper River Daybeacon 19	DBN DEST	11527	186-05 CHA	23/05

DISCREPANCIES (PRIVATE AIDS) CORRECTED

LLNR	Aid Name	Status	Chart No.	BNM Ref.	LNM St	LNM End
49005	Dinner Key Marina South Channel Daybeacon 6	WATCHING PROPERLY	11467	N/A	35/05	47/06
49030	Dinner Key Marina South Channel Daybeacon 11	WATCHING PROPERLY	11465	N/A	35/05	47/06
49035	Dinner Key Marina South Channel Daybeacon 12	WATCHING PROPERLY	11465	N/A	35/05	47/06
49870	Convoy Point Light 2	WATCHING PROPERLY	11467	NA	41/03	47/06
59585	Bradenton Beach Marina Channel Daybeacon 3	WATCHING PROPERLY	11425	N/A	28/05	47/06

PLATFORM DISCREPANCIES

Name	Status	Position	BNM Ref.	LNM St	LNM End
None					

PLATFORM DISCREPANCIES CORRECTED

Name	Status	Position	BNM Ref.	LNM St	LNM End
None					

SECTION III - TEMPORARY CHANGES and TEMPORARY CHANGES CORRECTED

This section contains temporary changes and corrections to Aids to Navigation for this edition. When charted aids are temporarily relocated for dredging, testing, evaluation, or marking an obstruction, a temporary correction shall be listed in Section IV giving the new position.

TEMPORARY CHANGES

LLNR	Aid Name	Status	Chart No.	BNM Ref.	LNM St	LNM End
625	Cape Canaveral Light	DISCONTINUED	11481	015-06 Jax	03/06	
6220	Brunswick Point Cut Lighted Buoy 26	RELOCATED FOR DREDGING	11489	N/A	12/06	
6225	Brunswick Point Cut Lighted Buoy 27	RELOCATED FOR DREDGING	11489	N/A	12/06	
22270	Egmont Channel Lighted Buoy 9	RELOCATED FOR DREDGING	11412	1186-06 STP	38/06	
22275	Egmont Channel Lighted Buoy 10	RELOCATED FOR DREDGING	11412	1183-06 STP	38/06	
22295	Egmont Channel Lighted Buoy 11	RELOCATED FOR DREDGING	11415	1235-06 STP	33/06	
22300	Egmont Channel Lighted Buoy 12	RELOCATED FOR DREDGING	11415	1235-06 STP	33/06	
22325	Egmont Channel Lighted Buoy 17	RELOCATED FOR DREDGING	11415	1432-06 STP	46/06	49/06
22345	Mullet Key Channel Lighted Buoy 19	RELOCATED FOR DREDGING	11415	1432-06 STP	46/06	49/06
22390	Mullet Key Channel Lighted Buoy 25	RELOCATED FOR DREDGING	11415	1432-06 STP	46/06	49/06
22500	Tampa Bay Cut B Channel Lighted Buoy 6B	RELOCATED FOR DREDGING	11416	1801-04 STP	44/04	
22515	Port Manatee Channel Lighted Buoy 1	RELOCATED FOR DREDGING	11415	N/A	02/06	
22520	Port Manatee Channel Lighted Buoy 2	RELOCATED FOR DREDGING	11415	016-06 STP	02/06	
22530	Port Manatee Channel Lighted Buoy 3	RELOCATED FOR DREDGING	11415	1977-04 STP	48/04	
22550	Port Manatee Channel Light 7	RELOCATED FOR DREDGING	11415	021-06 STP	02/06	

TEMPORARY CHANGES CORRECTED

LLNR	Aid Name	Status	Chart No.	BNM Ref.	LNM St	LNM End
------	----------	--------	-----------	----------	--------	---------

None

PLATFORM TEMPORARY CHANGES

Name	Status	Position	BNM Ref.	LNM St	LNM End
------	--------	----------	----------	--------	---------

None

PLATFORM TEMPORARY CHANGES CORRECTED

Name	Status	Position	BNM Ref.	LNM St	LNM End
------	--------	----------	----------	--------	---------

None

SECTION IV - CHART CORRECTIONS

This section contains corrections to federally and privately maintained Aids to Navigation, as well as NOS corrections.

This section contains corrective actions affecting chart(s). Corrections appear numerically by chart number, and pertain to that chart only. **It is up to the mariner to decide which chart(s) are to be corrected.** The following example explains individual elements of a typical chart correction.

Chart Number	Chart Edition	Edition Date	Last Local Notice to Mariners	Horizontal Datum Reference	Source of Correction	Current Local Notice to Mariners
12327	91st Ed.	19-APR-97	Last LNM: 26/97	NAD 83		27/97
<i>Chart Title:</i> NY-NJ-NEW YORK HARBOR - RARITAN RIVER						
Main Panel 2245 NEW YORK HARBOR					CGD01	
(Temp) ADD	NATIONAL DOCK CHANNEL BUOY 3				at 40-41-09.001N	074-02-48.001W
	Green can					
Corrective Action	Object of Corrective Action					Position

(Temp) indicates that the chart correction action is temporary in nature. Courses and bearings are given in degrees clockwise from 000 true.

Bearings of light sectors are toward the light from seaward. The nominal range of lights is expressed in nautical miles (NM) unless otherwise noted.

411	50th Ed.	01-SEP-05	Last LNM: 45/06	NAD 83		47/06
<i>Chart Title:</i> Gulf of Mexico						
Main Panel 45 GULF OF MEXICO. Page/Side: N/A						
ADD	Label: (see note I) (NOS NW-13430)				NOS 30-11-32.500N	081-12-58.150W
ADD	Label: (see note I) (NOS NW-13430)				NOS 30-49-37.500N	081-12-32.450W
ADD	NOTE I; NOTE I Recommended routing to reduce the likelihood of ship strikes of endangered whales are in effect within this area, but are not depicted on this chart. See larger scale charts. (NOS NW-13430)				NOS 31-23-02.800N	083-03-57.550W
11009	37th Ed.	01-JUL-04	Last LNM: 41/06	NAD 83		47/06
<i>Chart Title:</i> Cape Hatteras to Straits of Florida						
Main Panel 378 CAPE HATTERAS TO STRAITS OF FLORIDA. Page/Side: N/A						
ADD	Label: (see note H) (NOS NW-13430)				NOS 30-24-57.550N	081-13-56.900W
ADD	Label: (see note H) (NOS NW-13430)				NOS 30-40-51.600N	081-06-57.000W
ADD	Label: (see note H) (NOS NW-13430)				NOS 31-01-54.300N	081-15-41.100W
ADD	NOTE H; NOTE H Recommended routing to reduce the likelihood of ship strikes of endangered whales are in effect within this area, but are not depicted on this chart. See larger scale charts. (NOS NW-13430)				NOS 32-25-39.600N	081-16-10.050W
11400	36th Ed.	01-JAN-06	Last LNM: 36/06	NAD 83		47/06
<i>Chart Title:</i> Tampa Bay to Cape San Blas						
Main Panel 177 TAMPA BAY TO CAPE SAN BLAS. Page/Side: N/A						
RELOCATE	Homosassa Bay Entrance Light 2				CGD07 from 28-41-25.522N to 28-41-25.500N	082-48-39.177W 082-48-38.897W
11409	28th Ed.	01-JUN-03	Last LNM: 42/06	NAD 83		47/06
<i>Chart Title:</i> Anclote Keys to Crystal River						
Main Panel 174 ANCLOTE KEYS TO CRYSTAL RIVER. Page/Side: N/A						
RELOCATE	Homosassa Bay Entrance Light 2				CGD07 from 28-41-25.522N to 28-41-25.500N	082-48-39.177W 082-48-38.897W
11412	44th Ed.	01-JUN-06	Last LNM: 42/06	NAD 83		47/06
<i>Chart Title:</i> Tampa Bay and St. Joseph Sound						
Main Panel 175 TAMPA BAY AND ST JOSEPH SOUND. Page/Side: N/A						

RELOCATE	Tampa Bay Cut K Channel Upper Range Front Light Focal height to 29 Feet 4NM Passing light	CGD07 from 27-52-19.530N to 27-52-19.583N	082-32-57.866W 082-32-57.848W
RELOCATE	Tampa Bay Cut K Channel Upper Range Rear Light to Focal Height of 69 Feet	CGD07 from 27-52-58.204N to 27-52-58.233N	082-32-40.526W 082-32-40.506W
ADD	Tampa Bay Cut K Channel Range Rear Passing Lights 5 NM FI W 6s	CGD07 at 27-52-58.233N	082-32-40.506W

11416 **7th Ed.** **01-MAR-06** **Last LNM: 41/06** **NAD 83** **47/06**

ChartTitle: Tampa Bay; Safety Harbor; St. Petersburg; Tampa

CHART FL-TAMPA BAY. Page/Side: N/A

RELOCATE	Tampa Bay Cut K Channel Upper Range Front Light Focal height to 29 Feet 4NM Passing light	CGD07 from 27-52-19.530N to 27-52-19.583N	082-32-57.866W 082-32-57.848W
RELOCATE	Tampa Bay Cut K Channel Upper Range Rear Light to Focal Height of 69 Feet	CGD07 from 27-52-58.204N to 27-52-58.233N	082-32-40.526W 082-32-40.506W
ADD	Tampa Bay Cut K Channel Range Rear Passing Lights 5 NM FI W 6s	CGD07 at 27-52-58.233N	082-32-40.506W

11425 **36th Ed.** **01-MAY-05** **Last LNM: 44/06** **NAD 83** **47/06**

ChartTitle: Intracoastal Waterway Charlotte Harbor to Tampa Bay

CHART FL-ICW-CHARLOTTE HARBOR TO TAMPA BAY. Page/Side: N/A

RELOCATE	New Pass Channel Buoy 5	CGD07 from 27-19-22.032N to 27-19-19.491N	082-35-28.787W 082-35-27.811W
----------	-------------------------	---	----------------------------------

11427 **34th Ed.** **01-MAY-05** **Last LNM: 46/06** **NAD 83** **47/06**

ChartTitle: Intracoastal Waterway Fort Myers to Charlotte Harbor and Wiggins Pass

CHART FL-ICW-FORT MYERS TO CHARLOTTE HARBOR & WIGGINS PASS. Page/Side: N/A

(Temp)	RELOCATE	Caloosahatchee River Daybeacon 94 to Temp Red Lighted Buoy	CGD07 from 26-31-31.581N to 26-31-31.448N	082-00-11.349W 082-00-11.453W
--------	----------	---	---	----------------------------------

11449 **17th Ed.** **01-DEC-05** **Last LNM: 19/06** **NAD 83** **47/06**

ChartTitle: Intracoastal Waterway Matecumbe to Grassy Key

Main Panel 324 INTRACOASTAL WATERWAY MATECUMBE TO GRASSY KEY. Page/Side: N/A

(Temp)	RELOCATE	Boot Key Harbor Daybeacon 21 to Temp Red Lighted Buoy "WR21", Q FI G	CGD07 from 24-42-11.485N to 24-42-11.525N	081-05-34.314W 081-05-34.140W
--------	----------	---	---	----------------------------------

11451 **32nd Ed.** **01-MAR-05** **Last LNM: 43/06** **NAD 83** **47/06**

ChartTitle: FOLIO SMALL-CRAFT CHART Miami to Marathon and Florida Bay

CHART FL- MIAMI TO MARATHON AND FLORIDA BAY. Page/Side: N/A

(Temp)	RELOCATE	Boot Key Harbor Daybeacon 21 to Temp Red Lighted Buoy "WR21", Q FI G	CGD07 from 24-42-11.485N to 24-42-11.525N	081-05-34.314W 081-05-34.140W
--------	----------	---	---	----------------------------------

11453 **17th Ed.** **01-MAY-06** **Last LNM: 15/06** **NAD 83** **47/06**

ChartTitle: Florida Keys Grassy Key to Bahia Honda Key

Main Panel 325 INTRACOASTAL WATERWAY GRASSY KEY TO BAHIA HONDA KEY. Page/Side: N/A

(Temp)	RELOCATE	Boot Key Harbor Daybeacon 21 to Temp Red Lighted Buoy "WR21", Q FI G	CGD07 from 24-42-11.485N to 24-42-11.525N	081-05-34.314W 081-05-34.140W
--------	----------	---	---	----------------------------------

11466 **37th Ed.** **01-AUG-05** **Last LNM: 46/06** **NAD 83** **47/06**

ChartTitle: Jupiter Inlet to Fowey Rocks; Lake Worth Inlet

CHART FL-JUPITER INLET TO FOWEY ROCKS. Page/Side: N/A

(Temp) RELOCATE Port Everglades Light 4

CGD07
from 26-05-41.162N 080-06-07.781W
to 26-05-40.432N 080-06-07.787W

11467 39th Ed. 01-MAY-05 Last LNM: 46/06 NAD 83

47/06

ChartTitle: Intracoastal Waterway West Palm Beach to Miami

CHART FL- ICW - WEST PALM BEACH TO MIAMI. Page/Side: N/A

(Temp) RELOCATE Port Everglades Light 4

CGD07
from 26-05-41.162N 080-06-07.781W
to 26-05-40.432N 080-06-07.787W

11470 37th Ed. 01-OCT-04 Last LNM: 15/06 NAD 83

47/06

ChartTitle: Fort Lauderdale Port Everglades

Main Panel 308 FORT LAUDERDALE PORT EVERGLADES. Page/Side: N/A

(Temp) RELOCATE Port Everglades Light 4

CGD07
from 26-05-41.162N 080-06-07.781W
to 26-05-40.432N 080-06-07.787W

11472 32nd Ed. 01-MAY-05 Last LNM: 46/06 NAD 83

47/06

ChartTitle: Intracoastal Waterway Palm Shores to West Palm Beach;Loxahatchee River

CHART FL-ICW-PALM SHORES TO WEST PALM BEACH. Page/Side: N/A

(Temp) RELOCATE Indian River (South Section) Daybeacon 186
to Temp Red Unlighted Buoy

CGD07
from 27-27-53.510N 080-19-16.414W
to 27-27-53.418N 080-19-16.383W

(Temp) RELOCATE Indian River (South Section) Daybeacon 189
to Temp Red Unlighted Buoy

CGD07
from 27-26-39.863N 080-18-43.514W
to 27-26-39.924N 080-18-43.605W

RELOCATE Lake Worth South Daybeacon 2A

CGD07
from 26-45-43.696N 080-02-57.716W
to 26-45-43.744N 080-02-57.706W

11475 18th Ed. 01-OCT-06 Last LNM: 39/06 NAD 83

47/06

ChartTitle: Fort Pierce Harbor

Main Panel 290 FORT PIERCE HARBOR. Page/Side: N/A

(Temp) RELOCATE Indian River (South Section) Daybeacon 186
to Temp Red Unlighted Buoy

CGD07
from 27-27-53.510N 080-19-16.414W
to 27-27-53.418N 080-19-16.383W

11480 39th Ed. 01-SEP-05 Last LNM: 42/06 NAD 83

47/06

ChartTitle: Charleston Light to Cape Canaveral

Main Panel 376 CHARLESTON LIGHT TO CAPE CANAVERAL. Page/Side: N/A

ADD Chartlet - adding recommended two-way whale avoidance routes and
precautionary areas
<http://ocsddata.ncd.noaa.gov/nm/SupportImage.asp?ItemID=142988>;
Chartlet (NOS NW-13446)

NOS
30-59-25.000N 081-13-10.000W

ADD Chartlet - adding recommended two-way whale avoidance routes and
precautionary areas
<http://ocsddata.ncd.noaa.gov/nm/SupportImage.asp?ItemID=142989>;
Chartlet (NOS NW-13446)

NOS
30-23-40.000N 081-13-10.000W

11488 25th Ed. 01-JUL-05 Last LNM: 39/06 NAD 83

47/06

ChartTitle: Amelia Island to St. Augustine

Main Panel 285 AMELIA ISLAND TO ST AUGUSTINE. Page/Side: N/A

ADD 4 nautical mile radius Precautionary Area; Chart No. 1: M24 (NOS NW-
13430)

NOS
30-23-33.878N 081-19-07.309W

ADD	NOTE D - RECOMMENDED TWO-WAY WHALE AVOIDANCE ROUTES; NOTE D RECOMMENDED TWO-WAY WHALE AVOIDANCE ROUTES The two-way routes shown on this chart are RECOMMENDED for use by all vessels traveling into or out of Jacksonville and Fernandina Beach. This routing has been established to reduce the likelihood of ship strikes of endangered North Atlantic right whales. Mariners are warned that some vessels might not be able to keep to the starboard side of the routes at all times. CAUTION: Full bottom coverage surveys have not been conducted within the entire routes, so uncharted dangers may exist. See Source Diagram and Chapter 1, U.S. Coast Pilot. (NOS NW-13430)	NOS 30-18-51.500N	081-32-27.000W
ADD	Precautionary Area Label; PRECAUTIONARY AREA (see note D) (NOS NW-13430)	NOS 30-21-08.950N	081-21-12.750W
ADD	Precautionary Area Label; PRECAUTIONARY AREA (see note D) (NOS NW-13430)	NOS 30-26-30.800N	081-17-10.500W
ADD	Precautionary Area Label; PRECAUTIONARY AREA (see note D) (NOS NW-13430)	NOS 30-40-57.900N	081-14-37.500W
ADD	Precautionary Area PT 1 OF 3; (use Chart No.1: M24) (NOS NW-13430)	NOS 30-41-00.600N	081-15-20.260W
ADD	Precautionary Area PT 2 OF 3; (use Chart No.1: M24) (NOS NW-13430)	NOS 30-40-54.950N	081-14-37.850W
ADD	Precautionary Area PT 3 OF 3; (use Chart No.1: M24) (NOS NW-13430)	NOS 30-41-00.600N	081-13-56.100W
ADD	Precautionary Area; (use Chart No.1: M24) (NOS NW-13430)	NOS 30-23-33.878N	081-19-07.309W
ADD	Recommended Two-Way Route Label; RECOMMENDED TWO-WAY ROUTE (see note D) (NOS NW-13430)	NOS 30-11-07.900N	081-02-15.000W
ADD	Recommended Two-Way Route Label; RECOMMENDED TWO-WAY ROUTE (see note D) (NOS NW-13430)	NOS 30-19-09.500N	081-13-41.500W
ADD	Recommended Two-Way Route Label; RECOMMENDED TWO-WAY ROUTE (see note D) (NOS NW-13430)	NOS 30-21-35.050N	081-04-57.000W
ADD	Recommended Two-Way Route Label; RECOMMENDED TWO-WAY ROUTE (see note D) (NOS NW-13430)	NOS 30-38-06.400N	081-04-03.350W
ADD	Recommended Two-Way Route PT A 1 OF 5; (use Chart No.1: M28.2) (NOS NW-13430)	NOS 30-24-26.737N	081-14-36.103W
ADD	Recommended Two-Way Route PT A 2 OF 5; (use Chart No.1: M28.2) (NOS NW-13430)	NOS 30-23-01.720N	081-06-06.242W
ADD	Recommended Two-Way Route PT A 3 OF 5; (use Chart No.1: M28.2) (NOS NW-13430)	NOS 30-24-09.900N	081-00-59.900W
ADD	Recommended Two-Way Route PT A 4 OF 5; (use Chart No.1: M28.2) (NOS NW-13430)	NOS 30-21-29.218N	081-15-09.778W
ADD	Recommended Two-Way Route PT A 5 OF 5; (use Chart No.1: M28.2) (NOS NW-13430)	NOS 30-19-07.100N	081-00-59.900W
ADD	Recommended Two-Way Route PT B 1 OF 6; (use Chart No.1: M28.2) (NOS NW-13430)	NOS 30-21-29.218N	081-15-09.778W
ADD	Recommended Two-Way Route PT B 2 OF 6; (use Chart No.1: M28.2) (NOS NW-13430)	NOS 30-11-58.765N	081-01-36.606W
ADD	Recommended Two-Way Route PT B 3 OF 6; (use Chart No.1: M28.2) (NOS NW-13430)	NOS 30-11-53.350N	081-00-59.900W
ADD	Recommended Two-Way Route PT B 4 OF 6; (use Chart No.1: M28.2) (NOS NW-13430)	NOS 30-20-05.395N	081-16-49.861W
ADD	Recommended Two-Way Route PT B 5 OF 6; (use Chart No.1: M28.2) (NOS NW-13430)	NOS 30-10-31.296N	081-03-12.470W

ADD	Recommended Two-Way Route PT B 6 OF 6; (use Chart No.1: M28.2) (NOS NW-13430)	NOS 30-08-31.200N	081-00-59.900W
ADD	Recommended Two-Way Route PT C 1 OF 5; (use Chart No.1: M28.2) (NOS NW-13430)	NOS 30-41-00.600N	081-07-13.050W
ADD	Recommended Two-Way Route PT C 2 OF 5; (use Chart No.1: M28.2) (NOS NW-13430)	NOS 30-37-32.700N	081-00-59.900W
ADD	Recommended Two-Way Route PT C 3 OF 5; (use Chart No.1: M28.2) (NOS NW-13430)	NOS 30-41-00.600N	081-13-07.200W
ADD	Recommended Two-Way Route PT C 4 OF 5; (use Chart No.1: M28.2) (NOS NW-13430)	NOS 30-39-27.889N	081-08-40.499W
ADD	Recommended Two-Way Route PT C 5 OF 5; (use Chart No.1: M28.2) (NOS NW-13430)	NOS 30-35-10.750N	081-00-59.900W

11489 36th Ed. 01-JUN-05 Last LNM: 42/06 NAD 83 47/06

ChartTitle: Intracoastal Waterway St. Simons Sound to Tolmato River

Extension 262 JACKSONVILLE BEACH DD-EE. Page/Side: B

ADD	NOTE F - RECOMMENDED WHALE AVOIDANCE PRECAUTIONARY AREA; NOTE F RECOMMENDED WHALE AVOIDANCE PRECAUTIONARY AREA The precautionary area shown on this chart is RECOMMENDED for use by all vessels traveling within its limits. This precautionary area has been established to reduce the likelihood of ship strikes of endangered North Atlantic right whales. CAUTION: Full bottom coverage surveys have not been conducted within the precautionary area, so uncharted dangers may exist. See Chapter 1, U.S. Coast Pilot. (NOS NW-13430)	NOS 30-15-06.410N	081-24-00.000W
ADD	Precautionary Area Label; PRECAUTIONARY AREA (see note F) (NOS NW-13430)	NOS 30-22-25.200N	081-23-18.200W
ADD	Precautionary Area PT B 1 OF 3; (use Chart No.1: M24) (NOS NW-13430)	NOS 30-21-05.400N	081-22-45.600W
ADD	Precautionary Area PT B 2 OF 3; (use Chart No.1: M24) (NOS NW-13430)	NOS 30-22-00.000N	081-23-23.200W
ADD	Precautionary Area PT B 3 OF 3; (use Chart No.1: M24) (NOS NW-13430)	NOS 30-23-11.460N	081-23-44.140W

Main Panel 261 ST SIMONS SOUND TO TOLOMATO RIVER CC-DD. Page/Side: B

ADD	NOTE F - RECOMMENDED WHALE AVOIDANCE PRECAUTIONARY AREA; NOTE F RECOMMENDED WHALE AVOIDANCE PRECAUTIONARY AREA The precautionary area shown on this chart is RECOMMENDED for use by all vessels traveling within its limits. This precautionary area has been established to reduce the likelihood of ship strikes of endangered North Atlantic right whales. CAUTION: Full bottom coverage surveys have not been conducted within the precautionary area, so uncharted dangers may exist. See Chapter 1, U.S. Coast Pilot. (NOS NW-13430)	NOS 30-27-17.300N	081-28-38.700W
ADD	Precautionary Area Label; (see note F) (NOS NW-13430)	NOS 30-25-48.200N	081-22-25.800W
ADD	Precautionary Area Label; PRECAUTIONARY AREA (see note F) (NOS NW-13430)	NOS 30-22-47.050N	081-22-38.950W
ADD	Precautionary Area PT A 1 OF 6; (use Chart No.1: M24) (NOS NW-13430)	NOS 30-22-28.290N	081-23-34.810W
ADD	Precautionary Area PT A 2 OF 6; (use Chart No.1: M24) (NOS NW-13430)	NOS 30-22-48.700N	081-23-40.400W
ADD	Precautionary Area PT A 3 OF 6; (use Chart No.1: M24) (NOS NW-13430)	NOS 30-23-11.460N	081-23-44.140W
ADD	Precautionary Area PT A 4 OF 6; (use Chart No.1: M24) (NOS NW-13430)	NOS 30-24-09.800N	081-23-42.230W

ADD	Precautionary Area PT A 5 OF 6; (use Chart No.1: M24) (NOS NW-13430)	NOS 30-26-03.900N	081-22-44.250W
ADD	Precautionary Area PT A 6 OF 6; (use Chart No.1: M24) (NOS NW-13430)	NOS 30-27-14.800N	081-20-55.400W

11490 18th Ed. 01-DEC-04 Last LNM: 15/06 NAD 83 47/06

ChartTitle: Approaches to St. Johns River; St. Johns River Entrance

Inset 258 ST JOHNS RIVER ENTRANCE. Page/Side: N/A

ADD	NOTE D - RECOMMENDED TWO-WAY WHALE AVOIDANCE ROUTE; NOTE D RECOMMENDED TWO-WAY WHALE AVOIDANCE ROUTE The two-way route shown on this chart is RECOMMENDED for use by all vessels traveling into or out of Jacksonville. This routing has been established to reduce the likelihood of ship strikes of endangered North Atlantic right whales. Mariners are warned that some vessels might not be able to keep to the starboard side of the route at all times. CAUTION: Full bottom coverage surveys have not been conducted within the entire route, so uncharted dangers may exist. See Source Diagram and Chapter 1, U.S. Coast Pilot. (NOS NW-13430)	NOS 30-24-52.600N	081-24-44.500W
ADD	Precautionary Area Label; PRECAUTIONARY AREA (see note D) (NOS NW-13430)	NOS 30-23-16.400N	081-22-47.000W
ADD	Precautionary Area Label; PRECAUTIONARY AREA (see note D) (NOS NW-13430)	NOS 30-24-10.600N	081-20-44.400W
ADD	Precautionary Area Label; PRECAUTIONARY AREA (see note D) (NOS NW-13430)	NOS 30-25-31.900N	081-22-31.000W
ADD	Precautionary Area PT 1 OF 6; Chart No.1: M24 (NOS NW-13430)	NOS 30-22-53.000N	081-23-41.300W
ADD	Precautionary Area PT 2 OF 6; Chart No.1: M24 (NOS NW-13430)	NOS 30-23-02.260N	081-23-42.930W
ADD	Precautionary Area PT 3 OF 6; Chart No.1: M24 (NOS NW-13430)	NOS 30-23-11.460N	081-23-44.140W
ADD	Precautionary Area PT 4 OF 6; Chart No.1: M24 (NOS NW-13430)	NOS 30-24-09.800N	081-23-42.230W
ADD	Precautionary Area PT 5 OF 6; Chart No.1: M24 (NOS NW-13430)	NOS 30-24-58.000N	081-23-27.700W
ADD	Precautionary Area PT 6 OF 6; Chart No.1: M24 (NOS NW-13430)	NOS 30-25-40.700N	081-23-03.300W

Main Panel 259 APPROACHES TO ST JOHNS RIVER. Page/Side: N/A

ADD	Precautionary Area Label; PRECAUTIONARY AREA (see note D) (NOS NW-13430)	NOS 30-20-45.300N	081-19-04.520W
ADD	Precautionary Area Label; PRECAUTIONARY AREA (see note D) (NOS NW-13430)	NOS 30-26-53.400N	081-19-02.200W
ADD	Precautionary Area; (use Chart No.1: M24) (NOS NW-13430)	NOS 30-23-33.878N	081-19-07.309W
ADD	Recommended Two-Way Route Label; RECOMMENDED TWO-WAY ROUTE (see note D) (NOS NW-13430)	NOS 30-18-33.000N	081-12-49.600W
ADD	Recommended Two-Way Route Label; RECOMMENDED TWO-WAY ROUTE (see note D) (NOS NW-13430)	NOS 30-22-11.300N	081-10-41.000W
ADD	Recommended Two-Way Route PT A 1 OF 4; (use Chart No.1: M28.2) (NOS NW-13430)	NOS 30-24-26.737N	081-14-36.103W
ADD	Recommended Two-Way Route PT A 2 OF 4; (use Chart No.1: M28.2) (NOS NW-13430)	NOS 30-23-08.200N	081-06-45.000W
ADD	Recommended Two-Way Route PT A 3 OF 4; (use Chart No.1: M28.2) (NOS NW-13430)	NOS 30-21-29.218N	081-15-09.778W
ADD	Recommended Two-Way Route PT A 4 OF 4; (use Chart No.1: M28.2) (NOS NW-13430)	NOS 30-20-04.800N	081-06-45.000W

ADD	Recommended Two-Way Route PT B 1 OF 4; (use Chart No.1: M28.2) (NOS NW-13430)	NOS 30-21-29.218N	081-15-09.778W
ADD	Recommended Two-Way Route PT B 2 OF 4; (use Chart No.1: M28.2) (NOS NW-13430)	NOS 30-16-01.200N	081-07-22.100W
ADD	Recommended Two-Way Route PT B 3 OF 4; (use Chart No.1: M28.2) (NOS NW-13430)	NOS 30-20-05.395N	081-16-49.861W
ADD	Recommended Two-Way Route PT B 4 OF 4; (use Chart No.1: M28.2) (NOS NW-13430)	NOS 30-16-01.200N	081-11-02.100W

11491 **35th Ed.** **01-AUG-06** **Last LNM: 34/06** **NAD 83** **47/06**

ChartTitle: St. Johns River-Atlantic Ocean to Jacksonville

Main Panel 265 ST JOHNS RIVER ATLANTIC OCEAN TO JACKSONVILLE FLORIDA. Page/Side: A

ADD	NOTE C - RECOMMENDED WHALE AVOIDANCE PRECAUTIONARY AREA; NOTE C RECOMMENDED WHALE AVOIDANCE PRECAUTIONARY AREA The precautionary area shown on this chart is RECOMMENDED for use by all vessels traveling within its limits. This precautionary area has been established to reduce the likelihood of ship strikes of endangered North Atlantic right whales. CAUTION: Full bottom coverage surveys have not been conducted within the precautionary area, so uncharted dangers may exist. See Chapter 1, U.S. Coast Pilot. (NOS NW-13430)	NOS 30-22-29.200N	081-19-45.500W
ADD	Precautionary Area Label; PRECAUTIONARY AREA (see note C) (NOS NW-13430)	NOS 30-22-12.400N	081-22-44.800W
ADD	Precautionary Area Label; PRECAUTIONARY AREA (see note C) (NOS NW-13430)	NOS 30-25-03.900N	081-22-42.500W
ADD	Precautionary Area PT 1 OF 6; (use Chart No.1: M24) (NOS NW-13430)	NOS 30-21-18.400N	081-22-56.800W
ADD	Precautionary Area PT 2 OF 6; (use Chart No.1: M24) (NOS NW-13430)	NOS 30-22-17.500N	081-23-30.900W
ADD	Precautionary Area PT 3 OF 6; (use Chart No.1: M24) (NOS NW-13430)	NOS 30-23-11.460N	081-23-44.140W
ADD	Precautionary Area PT 4 OF 6; (use Chart No.1: M24) (NOS NW-13430)	NOS 30-24-09.800N	081-23-42.230W
ADD	Precautionary Area PT 5 OF 6; (use Chart No.1: M24) (NOS NW-13430)	NOS 30-24-43.000N	081-23-33.600W
ADD	Precautionary Area PT 6 OF 6; (use Chart No.1: M24) (NOS NW-13430)	NOS 30-25-16.850N	081-23-18.450W
ADD	Precautionary Area; (use Chart No.1: M24) (NOS NW-13430)	NOS 30-23-33.878N	081-19-07.309W

11502 **30th Ed.** **01-DEC-05** **Last LNM: 42/06** **NAD 83** **47/06**

ChartTitle: Doboy Sound to Fernadina

Main Panel 264 DOBOY SOUND TO FERNANDINA. Page/Side: N/A

ADD	NOTE E - RECOMMENDED TWO-WAY WHALE AVOIDANCE ROUTES; NOTE E RECOMMENDED TWO-WAY WHALE AVOIDANCE ROUTES The two-way routes shown on this chart are RECOMMENDED for use by all vessels traveling into or out of Brunswick and Fernandina Beach. This routing has been established to reduce the likelihood of ship strikes of endangered North Atlantic right whales. Mariners are warned that some vessels might not be able to keep to the starboard side of the routes at all times. CAUTION: Full bottom coverage surveys have not been conducted within the entire routes, so uncharted dangers may exist. See Source Diagram and Chapter 1, U.S. Coast Pilot. (NOS NW-13430)	NOS 30-47-08.800N	081-33-57.900W
ADD	Precautionary Area - 2 NM Radius; (use Chart No.1: M24) (NOS NW-13430)	NOS 31-02-48.840N	081-14-25.253W
ADD	Precautionary Area Label; PRECAUTIONARY AREA (see note E) (NOS NW-13430)	NOS 30-43-31.350N	081-14-31.600W
ADD	Precautionary Area Label; PRECAUTIONARY AREA (see note E) (NOS NW-13430)	NOS 31-03-57.950N	081-14-00.900W

ADD	Precautionary Area with 4 NM radius; (use Chart No.1: M24) (NOS NW-13430)	NOS 30-42-54.799N	081-14-38.162W
ADD	Precautionary Area; (use Chart No.1: M24) (NOS NW-13430)	NOS 30-42-54.799N	081-14-38.162W
ADD	Recommended Two-Way Route Label; RECOMMENDED TWO-WAY ROUTE (see note E) (NOS NW-13430)	NOS 30-37-37.600N	081-03-20.800W
ADD	Recommended Two-Way Route Label; RECOMMENDED TWO-WAY ROUTE (see note E) (NOS NW-13430)	NOS 30-43-58.000N	081-03-55.000W
ADD	Recommended Two-Way Route Label; RECOMMENDED TWO-WAY ROUTE (see note E) (NOS NW-13430)	NOS 30-57-49.500N	081-04-47.000W
ADD	Recommended Two-Way Route Label; RECOMMENDED TWO-WAY ROUTE (see note E) (NOS NW-13430)	NOS 31-02-25.050N	081-03-03.400W
ADD	Recommended Two-Way Route PT A 1 OF 6; (use Chart No.1: M28.2) (NOS NW-13430)	NOS 31-02-05.107N	081-12-14.926W
ADD	Recommended Two-Way Route PT A 2 OF 6; (use Chart No.1: M28.2) (NOS NW-13430)	NOS 31-00-04.237N	081-09-46.462W
ADD	Recommended Two-Way Route PT A 3 OF 6; (use Chart No.1: M28.2) (NOS NW-13430)	NOS 30-56-44.400N	080-56-02.450W
ADD	Recommended Two-Way Route PT A 4 OF 6; (use Chart No.1: M28.2) (NOS NW-13430)	NOS 31-01-07.640N	081-15-40.349W
ADD	Recommended Two-Way Route PT A 5 OF 6; (use Chart No.1: M28.2) (NOS NW-13430)	NOS 30-58-10.805N	081-10-29.194W
ADD	Recommended Two-Way Route PT A 6 OF 6; (use Chart No.1: M28.2) (NOS NW-13430)	NOS 30-54-40.000N	080-56-02.450W
ADD	Recommended Two-Way Route PT B 1 OF 6; (use Chart No.1: M28.2) (NOS NW-13430)	NOS 30-42-54.799N	081-12-18.677W
ADD	Recommended Two-Way Route PT B 2 OF 6; (use Chart No.1: M28.2) (NOS NW-13430)	NOS 30-41-16.980N	081-07-42.575W
ADD	Recommended Two-Way Route PT B 3 OF 6; (use Chart No.1: M28.2) (NOS NW-13430)	NOS 30-36-23.900N	080-58-56.900W
ADD	Recommended Two-Way Route PT B 4 OF 6; (use Chart No.1: M28.2) (NOS NW-13430)	NOS 30-41-09.128N	081-13-32.218W
ADD	Recommended Two-Way Route PT B 5 OF 6; (use Chart No.1: M28.2) (NOS NW-13430)	NOS 30-39-27.889N	081-08-40.499W
ADD	Recommended Two-Way Route PT B 6 OF 6; (use Chart No.1: M28.2) (NOS NW-13430)	NOS 30-35-42.600N	081-01-57.050W
ADD	Recommended Two-Way Route PT C 1 OF 4; (use Chart No.1: M28.2) (NOS NW-13430)	NOS 31-04-07.273N	081-12-39.377W
ADD	Recommended Two-Way Route PT C 2 OF 4; (use Chart No.1: M28.2) (NOS NW-13430)	NOS 31-02-54.950N	080-56-02.450W
ADD	Recommended Two-Way Route PT C 3 OF 4; (use Chart No.1: M28.2) (NOS NW-13430)	NOS 31-02-05.107N	081-12-14.926W
ADD	Recommended Two-Way Route PT C 4 OF 4; (use Chart No.1: M28.2) (NOS NW-13430)	NOS 31-00-54.450N	080-56-02.450W
ADD	Recommended Two-Way Route PT D 1 OF 4; (use Chart No.1: M28.2) (NOS NW-13430)	NOS 30-44-54.726N	081-14-38.224W
ADD	Recommended Two-Way Route PT D 2 OF 4; (use Chart No.1: M28.2) (NOS NW-13430)	NOS 30-44-54.726N	080-56-02.450W

ADD	Recommended Two-Way Route PT D 3 OF 4; (use Chart No. 1: M28.2) (NOS NW-13430)	NOS 30-42-54.799N	081-12-18.677W
ADD	Recommended Two-Way Route PT D 4 OF 4; (use Chart No. 1: M28.2) (NOS NW-13430)	NOS 30-42-54.799N	080-56-02.450W

11503 41st Ed. 01-APR-05 Last LNM: 28/06 NAD 83 47/06

ChartTitle: St. Marys Entrance Cumberland Sound and Kings Bay

Main Panel 199 ST MARYS ENTRANCE-CUMBERLAND SOUND AND KINGS BAY. Page/Side: N/A

ADD	NOTE B - RECOMMENDED TWO-WAY WHALE AVOIDANCE ROUTE; NOTE B RECOMMENDED TWO-WAY WHALE AVOIDANCE ROUTE The two-way route shown on this chart is RECOMMENDED for use by all vessels traveling into or out of Fernandina Beach. This routing has been established to reduce the likelihood of ship strikes of endangered North Atlantic right whales. Mariners are warned that some vessels might not be able to keep to the starboard side of the route at all times. CAUTION: Full bottom coverage surveys have not been conducted within the entire route, so uncharted dangers may exist. See Source Diagram and Chapter 1, U.S. Coast Pilot. (NOS NW-13430)	NOS 30-48-44.900N	081-18-10.700W
ADD	Precautionary Area Label; PRECAUTIONARY AREA (see note B) (NOS NW-13430)	NOS 30-43-09.900N	081-14-36.300W
ADD	Precautionary Area with 4 NM radius; (use Chart No. 1: M24) (NOS NW-13430)	NOS 30-42-54.799N	081-14-38.162W
ADD	Recommended Two-Way Route Label; RECOMMENDED TWO-WAY ROUTE (see note B) (NOS NW-13430)	NOS 30-41-45.300N	081-12-05.700W
ADD	Recommended Two-Way Route Label; RECOMMENDED TWO-WAY ROUTE (see note B) (NOS NW-13430)	NOS 30-43-56.500N	081-12-06.600W
ADD	Recommended Two-Way Route PT A 1 OF 4; (use Chart No. 1: M28.2) (NOS NW-13430)	NOS 30-42-54.799N	081-12-18.677W
ADD	Recommended Two-Way Route PT A 2 OF 4; (use Chart No. 1: M28.2) (NOS NW-13430)	NOS 30-42-39.750N	081-11-36.100W
ADD	Recommended Two-Way Route PT A 3 OF 4; (use Chart No. 1: M28.2) (NOS NW-13430)	NOS 30-41-09.128N	081-13-32.218W
ADD	Recommended Two-Way Route PT A 4 OF 4; (use Chart No. 1: M28.2) (NOS NW-13430)	NOS 30-40-28.850N	081-11-36.100W
ADD	Recommended Two-Way Route PT B 1 OF 4; (use Chart No. 1: M28.2) (NOS NW-13430)	NOS 30-44-54.726N	081-14-38.224W
ADD	Recommended Two-Way Route PT B 2 OF 4; (use Chart No. 1: M28.2) (NOS NW-13430)	NOS 30-44-54.726N	081-11-36.100W
ADD	Recommended Two-Way Route PT B 3 OF 4; (use Chart No. 1: M28.2) (NOS NW-13430)	NOS 30-42-54.799N	081-12-18.677W
ADD	Recommended Two-Way Route PT B 4 OF 4; (use Chart No. 1: M28.2) (NOS NW-13430)	NOS 30-42-54.799N	081-11-36.100W

11504 16th Ed. 01-JUN-05 Last LNM: 41/06 NAD 83 47/06

ChartTitle: St. Andrew Sound and Satilla River

Main Panel 255 ST ANDREW SOUND AND SATILLA RIVER. Page/Side: N/A

ADD	NOTE B - RECOMMENDED WHALE AVOIDANCE PRECAUTIONARY AREA; NOTE B RECOMMENDED WHALE AVOIDANCE PRECAUTIONARY AREA The precautionary area shown on this chart is RECOMMENDED for use by all vessels traveling within its limits. This precautionary area has been established to reduce the likelihood of ship strikes of endangered North Atlantic right whales. CAUTION: Full bottom coverage surveys have not been conducted within the precautionary area, so uncharted dangers may exist. See Source Diagram and Chapter 1, U.S. Coast Pilot. (NOS NW-13430)	NOS 31-04-20.700N	081-19-27.900W
ADD	Precautionary Area Label; PRECAUTIONARY AREA (see note B) (NOS NW-13430)	NOS 31-02-55.500N	081-16-30.800W
ADD	Precautionary Area PT 1 OF 3; (use Chart No.1: M24) (NOS NW-13430)	NOS 31-01-37.200N	081-16-17.500W
ADD	Precautionary Area PT 2 OF 3; (use Chart No.1: M24) (NOS NW-13430)	NOS 31-02-49.200N	081-16-45.200W
ADD	Precautionary Area PT 3 OF 3; (use Chart No.1: M24) (NOS NW-13430)	NOS 31-04-00.450N	081-16-17.500W

11505 3rd Ed. 01-AUG-06 Last LNM: 36/06 NAD 83 47/06

ChartTitle: Savannah River Approach

Main Panel 2900 SAVANNAH RIVER APPROACH. Page/Side: N/A

DELETE	Lazaretto Creek Obstruction Buoy 3	CGD07 32-00-49.686N	080-53-01.152W
--------	------------------------------------	------------------------	----------------

11506 42nd Ed. 01-DEC-05 Last LNM: 37/06 NAD 83 47/06

ChartTitle: St. Simons Sound, Brunswick Harbor and Turtle River

Main Panel 246 ST SIMONS SOUND BRUNSWICK HARBOR AND TURTLE RIVER. Page/Side: N/A

ADD	NOTE C - RECOMMENDED WHALE AVOIDANCE PRECAUTIONARY AREA; NOTE C RECOMMENDED WHALE AVOIDANCE PRECAUTIONARY AREA The precautionary area shown on this chart is RECOMMENDED for use by all vessels traveling within its limits. This precautionary area has been established to reduce the likelihood of ship strikes of endangered North Atlantic right whales. CAUTION: Full bottom coverage surveys have not been conducted within the precautionary area, so uncharted dangers may exist. See Source Diagram and Chapter 1, U.S. Coast Pilot. (NOS NW-13430)	NOS 31-03-21.450N	081-20-45.450W
ADD	Precautionary Area Label; PRECAUTIONARY AREA (see note C) (NOS NW-13430)	NOS 31-04-04.000N	081-14-14.800W
ADD	Precautionary Area PT 1 OF 3; (use Chart No.1: M24) (NOS NW-13430)	NOS 31-03-21.450N	081-16-39.900W
ADD	Precautionary Area PT 2 OF 3; (use Chart No.1: M24) (NOS NW-13430)	NOS 31-04-44.000N	081-15-05.900W
ADD	Precautionary Area PT 3 OF 3; (use Chart No.1: M24) (NOS NW-13430)	NOS 31-04-38.900N	081-13-29.500W

11507 33rd Ed. 01-NOV-06 Last LNM: 44/06 NAD 83 47/06

ChartTitle: Intracoastal Waterway Beaufort River to St. Simons Sound

Main Panel 247 BEAUFORT RIVER TO ST SIMONS SOUND SIDE A. Page/Side: A

NEW EDITION	Scale 1: 40,000; New edition (33 ed, 6/1/2006) due to numerous Notice to Mariner changes and hydrographic changes. This NOAA chart is now available in both the Print-on Demand and digital raster formats. See http://nauticalcharts.noaa.gov/mcd/dole.htm for details. The corresponding traditional paper chart will be available in two to eight weeks.	NOS --	--
-------------	--	-----------	----

11512 61st Ed. 01-OCT-06 Last LNM: 43/06 NAD 83 47/06

ChartTitle: Savannah River and Wassaw Sound

Main Panel 231 SAVANNAH RIVER AND WASSAW SOUND. Page/Side: N/A

DELETE	Lazaretto Creek Obstruction Buoy 3	CGD07 32-00-49.686N	080-53-01.152W
--------	------------------------------------	------------------------	----------------

SECTION V - ADVANCE NOTICES

This section contains advance notice of approved projects, changes to aids to navigation, or upcoming temporary changes such as dredging, etc. Mariners are advised to use caution while transiting these areas.

SUMMARY OF ADVANCED APPROVED PROJECTS

<u>Approved Project(s)</u>	<u>Project Date</u>	<u>Ref. LNM</u>
None		

GEORGIA - ICW - FLORIDA PASSAGE: Discontinued Aids.

The following changes will be made to the aids to navigation system in the Intra Coastal Waterway at Florida Passage.

FLORIDA PASSAGE RANGE FRONT LIGHT (LLNR 36375) will be permanently discontinued.

FLORIDA PASSAGE RANGE REAR DAYBEACON (LLNR 36380) will be permanently discontinued.

The work is schedule to be completed the week of 18 December 2006.

Ref: LNM 46/06

Chart 11511

SECTION VI - PROPOSED CHANGES

Periodically, the Coast Guard evaluates its system of aids to navigation to determine whether the conditions for which the aids to navigation were established have changed. When changes occur, the feasibility of improving, relocating, replacing, or discontinuing aids are considered. This section contains notice(s) of non-approved, proposed projects open for comment. SPECIAL NOTE: Mariners are requested to respond in writing to the District office unless otherwise noted (see banner page for address).

PROPOSED WATERWAY PROJECTS OPEN FOR PUBLIC COMMENT

<u>Proposed Project(s)</u>	<u>Closing</u>	<u>Docket No.</u>	<u>Ref. LNM</u>
None			

SOUTH CAROLINA-CHARLESTON HARBOR-WANDO RIVER: Aids to be Changed.

The following changes have been proposed for the aids to navigation system in the Wando River.

Discontinue WANDO RIVER RANGE E FRONT DBN (LLNR 3465) and establish Daybeacon 31 displaying Square Green on dolphin.

Permanently discontinue WANDO RIVER RANGE E REAR DBN (LLNR 3470).

All comments should be addressed to Commander (DPW), Seventh Coast Guard District 909 S.E. 1st Ave (STE 406) Brickell Plaza Federal Bldg Miami, FI 33131 to be received by 15 December 2006.

Ref: LNM 42/06 through 46/06

Chart 11524

LNLM: 42/06

FLORIDA - SEACOAST - PORT EVERGLADES: Discontinued Aid.

The following change has been proposed for the aids to navigation system at Port Everglades.

PORT EVERGLADES SPOIL BANK WEST DAYBEACON (LLNR 810) will be permanently discontinued. The structure has been destroyed and is currently marked with a temporary unlighted buoy. The buoy will be removed.

All comments should be addressed to Commander (DPW), Seventh Coast Guard District 909 S.E. 1st Ave (STE 406) Brickell Plaza Federal Bldg Miami, FI 33131 to be received by 22 December 2006.

Ref: LNM 46/06

Chart 11466

SECTION VII - GENERAL

This section contains information of general concern to the Mariners. Mariners are advised to use caution while transiting these areas.

WEST INDIES-PUERTO RICO-ISLA de VIEQUES-NORTH/EAST/SOUTH COAST: Unexploded Ordnance Disposal Operations.

Unexploded Ordnance Disposal Operations are being conducted with estimated completion date of 2010. Daily operations will take place from 0600 to 1800 at the north, east, and southern positions of Isla de Vieques. Vessels are cautioned not to enter an area encompassed by the following

WEST INDIES-PUERTO RICO-ISLA de VIEQUES-NORTH/EAST/SOUTH COAST: Unexploded Ordnance Disposal Operations.

coordinates: Starting north of Vieques from shore at Point 1 (one) in approximate position 18-08'42N 065-19'W, then north approximately 1NM at Point 2 (two) in approximate position 18-09'N 065-19'W, then east approximately 4NM to Point 3 (three) at approximate position 18-09'N 065-14'54"W, then south approximately 4NM at Point 4 (four) at approximate position 18-06'18"N 065-14'54"W, then west approximately 4NM to Point 5 (five) in approximate position 18-06'18N 065-19'W and end north on shore at approximate position 18-07'30"N 065-19'00W. Vessels are cautioned not to enter above mentioned area during ongoing operations. For further information contact U.S. Navy, Roosevelt roads, Ceiba, PR at (787) 865-4152 ext 460.

Ref: LNM 07/06 through 46/06
Charts: 25663 25664 25667

LNM: 07/06

BAHAMAS-TONGUE OF THE OCEAN-AUTEC: Aid Changed.

All mariners are advised that AUTEC Site 4 Light 2 (LLNR 80000.97) is extinguished.

Ref: LNM 14/05 through 46/06

LNM: 14/05

SOUTH CAROLINA-COOPER RIVER-DRUM ISLAND: Submerged Hazards.

U.S.Coast Guard Sector Charleston, SC has advised that possible submerged hazards/demolition debris in Cooper River for duration of Grace and Pearman bridge demolition.

Boaters are advised to stay in the main channel when transiting under the new Ravenel Bridge on the Cooper River. For complete text and chartlet of MSI Bulletin see enclosure number (7).

Ref: LNM 20/06 through 46/06
Chart 11524

LNM: 20/06

SOUTH CAROLINA-CHARLESTON-COOPER RIVER: Temporary Safety Zone.

The Coast Guard is establishing a temporary safety zone on the navigable waters of Hog island Reach on the Cooper River, for the demolition and recovery operations of the Grace Memorial and Silas Pearmen Bridges. This rule prohibits entry, anchoring, mooring, or transiting within the temporary safety zone without the permission of the Captain of the Port Charleston or his designated representative. This regulation is necessary to protect life and property on the navigable waters of the Cooper River from the danger associated with the demolition and recovery operations of these bridges. This rule is effective until 8:01 a.m. on December 31, 2006.

For further information contact LTJG Calvin Summers, Sector Charleston Office of Waterways Management at (843) 724-7647.

Ref: LNM 07/06 through 46/06 Docket Number (COTP Charleston 06-003)

Chart 11524

LNM: 07/06

SOUTH CAROLINA-INTRACOASTAL WATERWAY-COOSAW AND BROAD RIVERS: Marine Construction.

R.L. Morrison and Sons, Inc., will be constructing breasting dolphins at the fuel pier for the Marine Corps Air station in Beaufort, South Carolina. The fuel pier is located in approximate position 32-27-56.125N 080-41-29.970W on the ICW.

The crane barge CAPTAIN HARRINGTON, tugs ELIZA LUCAS and AMAZONAS will be on-scene monitoring VFH Channels 13 and 16, a deck barge will also be on-site. All vessels will be outside the channel when working at the fuel pier.

This project will commence on or about 1 Dec 2006 with completion date approximately 1 May 2007. All mariners are requested that a minimal wake be maintain while transiting the area. For further information please contact Mr. Michael H. Morrison at (843) 887-3261.

Chart 11519

LNM: 47/06

GEORGIA - INTRACOASTAL WATERWAY - ST SIMONS SOUND TO TOLOMATO RIVER - CUMBERLAND SOUND: Notice of Interest to Mariners.

Due to the limited commercial use of the Atlantic Intracoastal Waterway between Port Royal Sound, South Carolina (Mile 552) and Cumberland Sound, Georgia (Mile 713), the Savannah District will not receive funds to maintain the waterway to the authorized depths. The District will monitor the conditions of the waterway and publish quarterly condition reports.

Mariners are to use extreme caution when transiting the waterway until further notice.

Ref: LNM 48/03 through 46/06

Chart 11489

LNM: 48/03

FLORIDA-PALM SHORES TO WEST PALM BEACH-ST LUCIE INLET: Shoaling.

Extensive shoaling has been reported in the St Lucie Inlet, with the depth of water across the entire inlet decreased to approximately five (5)

FLORIDA-PALM SHORES TO WEST PALM BEACH-ST LUCIE INLET: Shoaling.

feet. All mariners are advised to stay alert and transit the area with extreme caution.

Ref: LNM 41/06 through 46/06

Chart 11472

LNM: 41/06

FLORIDA-SOMBERO KEY TO SAND KEY- WHALE HARBOR: Hazard to Navigation.

The Coast Guard has received a report of a metal pile sticking out of the water approximately one and a half feet between Whale Harbor Daybeacon 3 (LLNR 12700) and Whale Harbor Daybeacon 4 (LLNR 12705).

All mariners are advised to transit the area with caution.

Ref: LNM 30/05 through 46/06

Chart 11442

LNM: 30/05

FLORIDA-CHARLOTTE HARBOR TO TAMPA BAY-NEW PASS ENTRANCE CHANNEL: Uncharted Buoys.

The New Pass Entrance Channel is subject to continual change. Buoys are not charted because they are frequently shifted in position. The controlling depth was 8 feet for a width of 100 feet from LIGHT 7 (LLNR 21620) to the S R Bridge; thence 6 feet for a width of 100 feet to the Intracoastal Waterway and 8 feet to the basin; 7 feet in the basin except for shoaling to 3 1/2 feet in the southeast section of the basin.

BUOYS NOT CHARTED IN NEW PASS ENTRANCE CHANNEL

- Buoy 1 (LLNR 21590), - Buoy 2 (LLNR 21595), - Buoy 3A (LLNR 21600), - Buoy 5 (LLNR 21605) and - Buoy 5A (LLNR 21610)

Mariners are advised to use caution while transiting this area and view Local Notice to Mariners editions for shoaling information and repositioning of aids to navigation.

Ref: LNM 52/04 through 46/06

Chart 11425

LNM: 52/04

FLORIDA- TAMPA BAY ENTRANCE- TAMPA BAY: Marine Advisory.

In order to minimize the risk of collision with deep draft vessels and improve the safe transit of shallow draft vessels within the Tampa Bay and its approaches, the Coast Guard Captain of Port Tampa, Florida issues the following advisory: A NOAA survey number H-11344 conducted in July, 2004 reported that a water depth of 10 feet extends approximately 500 feet outward from both sides of the main ship channel in the waters west of the Sunshine Skyway Bridge adjacent to Egmont Channel, Mullet Key Channel, and Tampa Bay Cut "A" except in the vicinity of the Sunshine Skyway Bridge where existing security zones prohibit navigation closer than 100 feet around all bridge supports, dolphins, and rocky outcroppings from piers 88 to 135. Continuing east of the Sunshine Skyway Bridge, the advisory includes the waters adjacent to Point Pinellas Channel, Tampa Bay Cuts -A-, "B", "C", "D", "E", "F", "G", "J", "J-2", West of "K" Cut, Gadsen Point Cut, and Hillsborough Bay Cuts "A", and "C". All vessels drafting less than 10 feet may consider utilizing waters that have been identified by the 2004 NOAA survey parallel to, and within 500 feet of, the main ship channel when identifying the safest navigational course for transiting Tampa Bay and its approaches.

Ref: LNM 14/05 through 46/06

Chart 11415

LNM: 14/05

FLORIDA-ANCLOTE KEYS TO CRYSTAL RIVER: Hazard to Navigation.

The Hernando County Waterways Maintenance Department has advised that submerged rock has been reported in the Bonita Canal in the Hernando Beach area. The rock is not in the main channel but still considered a safety hazard.

The approximate position is 28-29-50.839N 082-39-29.280W. This area after permitted will be marked with a DANGER ROCK sign.

Ref: LNM 06/06 through 46/06

Chart 11409

LNM: 06/06

FLORIDA - CRYSTAL RIVER TO HORSESHOE POINT - CROSS FLORIDA BARGE CANAL - OKLAWAHA RIVER: Lock Closure.

Mariners are hereby notified that the H.H.Buckman Lock is closed indefinitely at the direction of the Florida Department of Environmental Protection. Construction operations and re-engineering work on the damaged manatee protection grates has commenced. This operation will continue until further notice. All inquires concerning this closure should be directed to: Ms. Bonita Pintard at (352) 236-7143.

Ref: LNM 48/03 through 46/06

Chart 11408

LNM: 48/03

FLORIDA-ESTERO BAY TO LEMON BAY, INCLUDING CHARLOTTE HARBOR: Bridge Construction.

All mariners are advised that construction has begun on the Cape Coral bridge fender system on the Caloosahatchee River, Cape Coral, Florida.

This fender replacement project will require a tug and barge to be placed in the navigable channel partially blocking the channel during working hours only. The unaffected portion of the channel, approximately forty-five (45) feet will remain unobstructed and open to traffic.

FLORIDA-ESTERO BAY TO LEMON BAY, INCLUDING CHARLOTTE HARBOR: Bridge Construction.

The nature of this work and the close proximity of the channel present a hazard to mariners transiting the area. The working tug will monitor VFH Channel 16. This project will be completed on or about 22 December 2006.

All mariners are advised to use extreme caution while transiting the area. For further information please contact Petty Officer Chuck Voss at (813) 228-2191 ext 8126

Ref: LNM 42/06 through 46/06

Charts: 11426 11427

LNM: 38/06

FLORIDA-INTRACOASTAL WATERWAY-MIAMI TO ELLIOT KEY

Eighteen (18) inch yellow special purpose work buoys will be deployed in and within the immediate vicinity of the Atlantis Project Site to facilitate construction. These buoys will be periodically relocated until the project is completed.

The project is located between Latitudes 25 deg 41'900N and 25 deg 42.050W, Longitudes 080 deg 05.320N and 080 deg 05.480W

Chart 11465

LNM: 47/07

FLORIDA - INTRACOASTAL WATERWAY - CHARLOTTE HARBOR TO TAMPA BAY: Hazard to Navigation. (Updated)

The Coast Guard has received a report of a possible submerged object in the vicinity of the center span of the Ringling Bridge.

On February 10, 2006 three (3) temporary buoys were deployed south of the new Ringling Causeway Bridge, in Sarasota Bay to mark submerged rocks that could pose a hazard to navigation during high tides. All three (3) buoys are east of the Gulf Intracoastal Waterway outside of the marked channel. The buoys are a standard, white, cylindrical information buoy. The buoys are anchored in place either on or in close proximity to the submerged rocks.

The buoys are one (1) foot in diameter and approximately 5 1/2 feet tall, marked with a orange diamond shape and worded HAZARD. The approximate positions of the buoys are:

- 1. 27-19-52.620N 082-33-24.060W
- 2. 27-19-52.920N 082-33-23.220W
- 3. 27-19-53.940N 082-33-22.080W

It is requested that all mariners exercise caution when transiting this area.

Ref: LNM 08/06 through 46/06

Chart 11425

LNM: 06/06

FLORIDA-INTRACOASTAL WATERWAY-ST LUCIE INLET TO FORT MYERS AND LAKE OKECHOBEE (ROUTE 2): Hurricane Wilma Debris Removal.

Mariners are hereby notified that the Okeechobee Waterway Route #2 remains closed until further notice, from Clewiston (S-310) to Port Mayaca (S-308) due to debris from Hurricane Wilma.

For complete text of this Notice to Navigation Interest concerning this lock closure see Local Notice to Mariners 32/06 (LNM 32/06), Enclosure Number 10.

Ref: LNM 32/06 through 46/06

Chart 11428

LNM: 32/06

SECTION VIII - LIGHT LIST CORRECTIONS

An Asterisk *, indicates the column in which a correction has been made to new information

(1) No.	(2) Name and Location	(3) Position	(4) Characteristic	(5) Height	(6) Range	(7) Structure	(8) Remarks
1590 28365	Homosassa Bay Entrance Light 2	28-41-25.500N 082-48-38.897W *	FI R 4s	16	4	TR on dolphin.	47/06
4670	Lazaretto Creek Obstruction Buoy 3						Remove from list. *
13815	Boot Key Harbor Daybeacon 21	24-42-11.525N 081-05-34.140W *				SG on pile.	47/06

SECTION VIII - LIGHT LIST CORRECTIONS (Continued)

(1) No.	(2) Name and Location	(3) Position	(4) Characteristic	(5) Height	(6) Range	(7) Structure	(8) Remarks	
23780	Tampa Bay Cut K Channel Upper Range Front Light	27-52-19.583N 082-32-57.848W	FI G 2.5s	29			Visible 0.5° each side of rangeline. Lighted throughout 24 hours. Passing light visible all around.	47/06
			FI G 2.5(1)					
		*	*	*		*	*	
23785	Tampa Bay Cut K Channel Upper Range Rear Light	27-52-58.233N 082-32-40.506W	Iso G 6s	69			Visible 0.5° each side of rangeline. Lighted throughout 24 hours.	47/06
	1,400 yards, 021.7° from front light.							
		*		*		*	*	
23787	Tampa Bay Cut K Channel Range Rear Passing Lights	27-52-58.233N 082-32-40.506W	FI W 6s		5	On same structure as Cut K Upper Range Rear Light.	Passing light visible all around. Located on NW and SE corners of the lower platform.	47/06
	*	*	*	*	*	*	*	
28365 1590	Homosassa Bay Entrance Light 2	28-41-25.500N 082-48-38.897W	FI R 4s	16	4	TR on dolphin.		47/06
		*						
30745.5	Bahia de San Juan Range Front Passing LT	18-27-25.489N 066-07-42.440W	FI W 6s		3	On same structure as Bahia De San Juan Range Front Light.	Visible all around.	47/06
					*			
45110	Indian River (South Section) Daybeacon 186	27-27-53.418N 080-19-16.383W		12				47/06
	*	*	*	*	*	*	*	
46725	Lake Worth South Daybeacon 2A	26-45-43.744N 080-02-57.706W				TR-TY on pile.		47/06
		*						
46745	Lake Worth South Daybeacon 4A	26-45-02.306N 080-02-54.558W				TR-TY on pile.		47/06
	* Delete Heading: Rybovich Spencer North Channel							47/06
54760	Caloosahatchee River Daybeacon 94	26-31-31.448N 082-00-11.453W						47/06
	*	*	*	*	*	*	*	

ENCLOSURES

1. North Atlantic Right Whales Warning

U.S. Mandatory Ship Reporting System (WHALE SOUTH)

LNM: 44/06

2. Special Warning Number 123, Somali.

Due to continuing conditions of armed conflict and lawlessness in Somali and waters off its coast, mariners are advised to avoid the Port of Mogadishu and remain at least 200 nautical miles distant from the Somali Coast.

3. Operation On Guard

On Guard Announcement

4. Dredging and Marine Construction

Dredging and Marine Construction List

5. Shoaling and Hazardous Situations

Shoaling and Hazardous Situation List

6. Bridge Construction and Repair/Drawbridge Status

Weekly Updated Status

7. Safe Boating Programs

Auxiliary Programs and Classes

8. Marine Safety Information Bulletin

Possible Submerged Hazards/Demolition Debris in Cooper River.

Chart 11524

LNM: 20/06

9. Marine Safety Information Bulletin

Port of Palm Beach Draft Restriction - Update #1

Chart 11472

10. U.S. Coast Pilot 5

Change Number 18

11. Notice To Navigation Interests

Locakage Delays: Canaveral Lock, Banana River, Florida

LNM: 47/06

D.W. Kunkel
Rear Admiral, U.S. Coast Guard
Commander, Seventh Coast Guard District

NORTH ATLANTIC RIGHT WHALES WARNING:

From December to March the coastal waters between Altamaha Sound, GA, and Sebastian Inlet, FL, are used as calving grounds by the severely endangered North Atlantic Right Whale. This is the world's only known calving ground for this species. Right Whales are the rarest whales in the world and are protected under law from disturbance or injury by the endangered species act of 1973, and the Marine Mammal Protection act of 1972. Right Whales, especially females and their calves, are slow swimmers and frequently lie at the surface. This behavior makes them vulnerable to collisions with ships, which are a significant source of mortality. Vessels operating within 25 miles of shore between 31-27N and 29-50N and within five miles of shore from 29-50N and 28-00N should take precautions to avoid collisions with Right Whales.

Intentional close approach to right whales is prohibited and is a violation of federal law. A minimum distance of 457 meters (500 yards) must be maintained of a right whale. If a dead or entangled right whale is sighted, report it immediately to the nearest Coast Guard unit via VHF-FM radio. Additional information about right whales is available in the U.S. Coast Pilot.

U.S. Mandatory Ship Reporting System (WHALESSOUTH)

The U.S. Coast Guard will commence operation of the mandatory ship reporting (MSR) system (**WHALESSOUTH**) from November 15 to April 15, in conjunction with the northern right whale calving season. All vessels, 300 gross tons or greater, shall report to the Coast Guard prior to entering the southeast reporting area. Reports are required during a single voyage (that is, a voyage in which a ship is in the area to visit one or more ports or traverse the area enroute to a port outside the reporting area). Ships are not required to report when leaving port or when exiting the system. Ships submitting reports will receive a reply message via INMARSAT C containing the most recent Right Whale sighting information, along with recommendations for avoiding collisions with Right Whales. The MSR system was adopted by International Maritime Organization (IMO) Resolution A. 858(20) in accordance with the International Convention for the Safety of Life at Sea 1974 (SOLAS 74). Sovereign immune vessels are exempt from the requirement to report, but are encouraged to participate. No commercially sensitive information is being requested.

REPORTING AREA

- a. **WHALESSOUTH:** The geographical boundaries of the southeast reporting system include coastal waters within about 25 nautical miles along a 90 nautical mile stretch of the Atlantic seaboard in Florida and Georgia. The area extends from the shoreline east to longitude 80°51.60'W with the southern and northern boundaries at latitude 30°00.00'N and 31°27.00'N, respectively. NOAA Chart No. 11009.

REPORTING METHOD

- a. Vessels are required to report specific ship information to the Coast Guard upon entry into the reporting area. Direct reports should be made via INMARSAT C to one of the below addresses.
E-mail: RightWhale.MSR@noaa.gov or Telex: 236737831
- b. Vessels not equipped with INMARSAT C should report directly to one of the below addresses via alternate satellite communications equipment.
E-mail: RightWhale.MSR@noaa.gov or Telex: 236737831
- c. Vessels unable to use satellite communications equipment should contact the U.S. Coast Guard Communication Area Master Station, Chesapeake, VA via SITOR/NBDP on 8426.3 kHz, 12590.8 kHz, 16817.8 kHz twenty four hours per day, or 6314.3 kHz from 2300 GMT until 1100 GMT and 22387.8 kHz from 1100 GMT until 2300 GMT.
- d. Vessels unable to use satellite communications or SITOR/NBDP should contact the U.S. Coast Guard Communication Area Master Station, Chesapeake, VA via published voice frequencies.

REPORTING INSTRUCTIONS

- a. Vessels shall report the following information in accordance with the IMO format in Resolution A. 648(16) General Principles for Ship Reporting Systems and Ship Reporting Requirements.

Paragraph	Function	Information Required
System name	System identifier	WHALESSOUTH.
M	INMARSAT number	Vessel INMARSAT number.

A	Ship	Vessel name and call sign.
B	Date, time, and month of report	Six digit group giving day of month and time, single letter indicating time zone, and three letters indicating month.
E	True course	3-digit number indicating true course.
F	Speed in knots and tenths	3-digit group indicating knots and tenths.
H	Date, time, and point of entry into system	Date and time expressed as in (B) and latitude and longitude expressed as a four digit group giving latitude, the letter N indicating north, followed by a /, a five digit group giving longitude, and the letter W indicating west.
I	Destination and ETA	Name of port and arrival time expressed as in (B).
L	Route information	Route information should be reported as either a direct rhumbline to port (RL) and intended speed expressed as in (F), or a series of way points (WP). Vessels reporting waypoints should include latitude and longitude, expressed as in (H), and intended speed between waypoints. For vessels transiting within a traffic separation scheme (TSS), give only the waypoints and intended speed for entry and departure of TSS.

- b. Reports shall follow the prescribed format shown below. Reports should be sent as a direct email to RightWhale.MSR@noaa.gov or telex to **236737831**. Use of batch message routing services may delay receipt of a report. Proper format is required to ensure receipt of reply message. Including extra information, extra characters, or double spacing may result in failure of the system to send a reply message:
- c. Example report for WHALESSOUTH:

```

WHALESSOUTH//
M/412345678//
A/BEAGLE/NVES//
B/270810Z MAR//
E/250//
F/17.0//
H/270810Z MAR/3030N/08052W//
I/MAYPORT/271215Z MAR//
L/RL/17.0//

```

SUBJ: REBROADCAST OF SPECIAL WARNING 123.
UNCLASSIFIED//
MSGID/GENADMIN/NGA NAVSAFETY BETHESDA MD//
RMKS/

SPECIAL WARNING NUMBER 123. SOMALI.

1. DUE TO CONTINUING CONDITIONS OF ARMED CONFLICT AND LAWLESSNESS IN SOMALIA AND WATERS OFF ITS COAST, MARINERS ARE ADVISED TO AVOID THE PORT OF MUQDISHO (MOGADISHU) AND TO REMAIN AT LEAST 200 NAUTICAL MILES DISTANT FROM THE SOMALI COAST. THE U.S. GOVERNMENT DOES NOT HAVE AN EMBASSY IN SOMALIA AND CANNOT PROVIDE SERVICES TO US CITIZENS.
2. RECENT VESSEL HIJACKINGS OFF THE EAST COAST OF SOMALIA DEMONSTRATE THAT PIRATES ARE ABLE TO CONDUCT AT SEA HIJACKINGS FROM AS FAR SOUTH AS KISMAAYO (CHISIMAYU) (00-22S), THOUGH VESSELS ARE ADVISED TO TRANSIT NO CLOSER THAN 02-00S, TO AS FAR NORTH AS EYL (08-00N), AND OUT TO A DISTANCE OF 170 MILES. THE FIRST KNOWN ATTEMPT TO HIJACK A CRUISE VESSEL OCCURRED IN NOVEMBER 2005. ALL MERCHANT VESSELS TRANSITING THE COAST OF SOMALIA, NO MATTER HOW FAR OFFSHORE, SHOULD INCREASE ANTI-PIRACY PRECAUTIONS AND MAINTAIN A HEIGHTENED STATE OF VIGILANCE. PIRATES ARE REPORTED TO HAVE USED PREVIOUSLY HIJACKED SHIPS AS BASES FOR FURTHER ATTACKS.
3. ANOTHER REPORTED PIRATE TACTIC HAS BEEN TO ISSUE A FALSE DISTRESS CALL TO LURE A SHIP CLOSE INSHORE. THEREFORE, CAUTION SHOULD BE TAKEN WHEN RESPONDING TO DISTRESS CALLS KEEPING IN MIND IT MAY BE TAKEN WHEN RESPONDING TO DISTRESS CALLS KEEPING IN MIND IT MAY BE A TACTIC TO LURE A VESSEL INTO A TRAP.
4. VICTIMIZED VESSELS HAVE REPORTED TWO TO THREE (2-3) SPEEDBOATS MEASURING SIX TO NINE METERS (6-9M) IN LENGTH. EACH VESSEL HAS A CREW OF THREE TO SIX (3-6) ARMED MEN WITH AK-47S AND SHOULDER LAUNCHED ROCKETS, WHICH ARE OPENING FIRE ON VESSELS IN BROAD DAYLIGHT IN ORDER TO INTIMIDATE THEM INTO STOPPING.
5. TO DATE, VESSELS THAT INCREASE SPEED AND TAKE EVASIVE MANEUVERS AVOID BOARDING WHILE THOSE THAT SLOW DOWN ARE BOARDED, TAKEN TO THE SOMALI COASTLINE, AND RELEASED AFTER SUCCESSFUL RANSOM PAYMENT, OFTEN AFTER PROTRACTED NEGOTIATIONS OF AS MUCH AS 11 WEEKS.
6. CANCEL SPECIAL WARNING NUMBER 111.//

#5827

BT

NNNN

OPERATION "ON GUARD"

U. S. Coast Guard Marine Safety Office Miami announces Operation "ON GUARD". This operation is designed to employ Coast Guard - active duty, reserve and auxiliary, Federal Bureau of Investigation, US Customs Service, US Immigration and Naturalization Service and the Florida Department of Law Enforcement personnel in response to suspected terrorist activity at the waterfront facilities of the United States. South Florida is extremely vulnerable because it is the terminus of illegal alien and narcotics smuggling routes from the Bahamas, the Caribbean and South America. These routes are well established and are readily available for use by terrorist organizations. An urgent need existed to make the American Public equal partners in the fight on terrorism. Operation "ON GUARD" creates an effective deterrent measure that employs the eyes and ears of the marine industry and the boating public, people that know every inch of the coastline because it is where they work and play. Potential terrorists are put on notice that their activities will be seen and reported.

Operation "ON GUARD" takes a two pronged approach consisting of face to face visits by Coast Guard, FBI, USCS, INS and FDLE personnel combined with a coordinated joint agency media campaign to reach Marina Operators, Marine Dealers, Bridge Tenders, Commercial Fishermen, and the Boating Public. This operation relies on Coast Guard Auxiliary programs already in place like the "Clean Marina" program, Vessel Safety Checks, Marine Dealer Visits and the Commercial Fishing Vessel Safety Program to reach their normal customers, the waterfront users. The public is provided with the toll free number (1.800.424.8802) for reporting suspected terrorist activity to the National Response Center and the 1.800.BE ALERT number for US Customs along with a list of reporting criteria.

Report:

- Suspicious persons conducting unusual activities
- Individuals establishing businesses or roadside food stands in proximity to marina or bridge
- Unknown persons photographing or creating diagrams
- Unknown or suspicious persons loitering for extended periods of time
- Unknown or suspicious persons renting watercraft
- Suspicious vendors attempting to sell/deliver merchandise or drop off packages

For additional information contact: LCDR Armin Cate (305) 535-8735

D. DREDGING AND MARINE CONSTRUCTION OPERATIONS

Location	Type of Work	EST Comp Date	Dredge	Ref LNM
Bahamas	Above Water Cable Ops	UNK	UNKNOWN	10/03
WI-PR-San Juan Harbor	Dredging Ops	NOV06	ACOE	36/06
WI-PR-Ponce Harbor (Updated)	Dredging Ops	NOV06	WEEKS #12	25/05-11/06-41/06
SC-Beaufort	Marine Construction	MAY07	CAPTAIN HARRINGTON	46/06
SC-Charleston Harbor-Cooper River	Marine Construction Ops	UNK	Tug LAURA	38/02
SC-Charleston Hbr-Town Creek-Wando River	Dredging Ops	NOV06	HAMPTON ROADS	45/06
SC-Cooper River	Drilling Ops	UNK	Spud Barges	04/02
SC-Hilton Head	Beach Renourishment	DEC06	ILLINOIS	35/96
GA-Cumberland Sound	Dredging Ops	UNK	UNKNOWN	26/03
GA-Brunswick	Dredging Ops	NOV06	ARLINGTON	44/06
FL-Jacksonville Harbor	Dredging Ops	SEP07	ACOE	35/06
FL-Jupiter Island	Dredging Ops	FEB07	LIBERTY ISLAND/DODGE ISLAND	43/06
FL-Jupiter Inlet-North/South Jetty	Marine Construction	FEB07	Shoreline Foundation, Inc.	44/06
FL-Miami River	Dredging Ops	DEC06	BEAN 7	40/04
FL-Miami River/27 TH Avenue-Salinity Dam	Dredging Ops	2006	BARREDOR DEL RIO	20/05
FL-ICW-Nassau Snd-Sawpit Creek	Dredging Ops	NOV06	WILCO	18/06-43/06
FL-Tampa Bay-Sparkman Channel	Dredging Ops	MAR07	Misener Marine Construction Inc	45/05
FL-Tampa Bay-Egmont Channel/Mullet Key	Dredging Ops	DEC06	EAGLE 1	31/06-46/06
FL-Boca Grande Pass	Dredging Ops	DEC06	BEACHBUILDER	41/06
FL-Caxambas Pass	Dredging Ops	JAN07	MISTER O	42/06

E. SHOALING AND HAZARDOUS SITUATIONS

Location	Waterway	Significant Information	Chart Ref LNM
SC	Seacoast	Charleston Harbor Ocean Dredged Material Disposal Site (ODMDS) higher than charted depths, minimum depth may be 18 feet.	11521 09-01
SC	Murrells Inlet	Shoaling continues to be reported between Murrells Inlet Buoy 4 (LLNR 1775) and Murrells Inlet Buoy 9 (LLNR 1795.5)	11534 10-06 37-06
SC	Murrells Inlet	Shoaling has been reported in the vicinity of Murrells Inlet Buoy 25 (LLNR 1850)	11534 31-06
SC	Little River Inlet	A 47 ft tug sank in approx position 33-50.1N 078-32.8W and is marked with a lighted buoy	11535 29-03
SC	Winyah Bay	Shoaling has been reported in position 33-13-00N 079-11-50W in the vicinity of Georgetown Lighthouse (LLNR 20) the depth of the water was reported at 27 feet.	11535 50-01
SC	Folly River	Shoaling has been observed between Folly River Buoy 14A (LLNR 3750.6) and Folly River Buoy 19 (LLNR 3750.7)	11522 19-04
SC	Shem Creek	Shoaling in the vicinity of SHEM CREEK RANGE LIGHT 16 (LLNR 3555)	11524 29-03
SC	Charleston Hbr	SHEM CREEK RANGE FRONT LIGHT (LLNR 3560) is not properly marking the center of the channel and has been changed to a quick flashing green light (QG) and is displaying square green (SG) dayboards.	11524 44-02
SC	Charleston Hbr	Severe shoaling in center of channel datum at depth of 5.5 MLW between Mt. Pleasant Channel DB 1 (LLNR 3510) and Mt. Pleasant Channel DB 2 (LLNR 3515).	11523 31-03
SC	Cooper River	A midstream transfer facility is conducting continued operations in the vicinity of Naval Weapons Station near the TC dock. Operations are outside the marked navigation channel and should not impede navigation.	11524 36-03
SC	Cooper River	Concrete and rock reported at the 40 foot depth on both sides of the navigation channel adjacent to the manmade islands directly under the I-526 Bridge.	11524 49-02
SC	Cooper River	A conveyor extends approx 20 ft into Town Creek beneath Cooper River bridges.	11524 13-02
SC	Stono Inlet	Shoaling to 7 feet at MLLW between Stono Inlet Channel Buoy 3 (LLNR 3710) and Buoy 4 (LLNR 3715).	11522 31-03
SC	Folly River	Obstruction (steel H beam) reported 50-70 yds outside marked channel and outheast of FOLLY RIVER LB 2 (LLNR 3735) at low tide	11522 06-02
SC	Folly River	Shoaling to 5 ft at MLW reported in the Folly River from Folly River LB 2 (LLNR 3735) to Folly River LB 7 (LLNR 3740) and to 5 ft at MLW from Folly River Buoy 18 (LLNR 3755 to Folly River Buoy 19 (LLNR 3760) within the confines of the marked channel.	11522 06-03
SC	Beaufort River	A 10"x10"x10" beam with pilings reported snagged on a private dock between Stono River DBN 57A (LLNR 34800) on the Stono River.	11518 06-02
SC	Beaufort River	Continued shoaling to depths of 6.5 feet in the vicinity from WHITE POINT LT 110 (LLNR 34945) through Dawho River Buoy113 (LLNR 34960)	11518 30-01
SC	Cooper River	Submerged Obstruction reported in the vicinity of the Cooper River Bridge in approximate position 32-48-12.600N 079-55-03.400W	11524 10-01
SC	Cooper River	Shoaling to depths of 8 feet above charted datum reported in the vicinity of Cooper River Range "D" at the Naval Weapons Station.	11524 19-01
SC-ICW	Ashepool Riv	Shoaling has been reported between Fenwick Cut Daybeacon 161A (LLNR 35140.5) And Ashepool River LT 164 (LLNR 35145). Water depth reported 5 feet at low tide.	11518 17-04
SC-ICW	Little River	Little River Swing Bridge is missing a section of the dolphin fendering system.	11534 40-02
SC-ICW	Winyah Bay	Shoaling has been reported along Range E, Entrance Channel to Georgetown, SC	11534 06-06
SC-ICW	Winyah Bay	Shoaling has been reported between Winyah Bay-Charleston Harbor Daybeacon 37 (LLNR 34240) and Winyah Bay-Charleston Harbor Daybeacon 38 (LLNR 34240)	11518 51-03
SC-ICW	Brickyard Creek	A new shoal extends out of channel on green side between Brickyard Creek Daybeacon 209 (LLNR 35325) and Brickyard Creek Daybeacon 211(LLNR 35335). Water depth at low tide is reported at 2.6 feet.	11507 17-04
SC-ICW		Severe reported shoaling between Hell's Gate Daybeacon 89 (LLNR 36279) and Hell's Gate Light 92 (LLNR 36290).	11507 17-06
SC-ICW	Port Royal Sound	Severe shoaling has been reported in various located in the ICW between Port Royal Sound, SC and Fernandina, FL. (See LNM 31/05 for Channel Conditions).	31-05
GA-ICW	Vernon River	Shoaling has been reported in the middle of channel from Raccoon Key LB 78 (LLNR 36265) and Hells gate LT 91 (LLNR 36285)	11507 17-04
GA	St Catherinres Snd	Shoaling reported in vicinity of St Catherines Snd LB 2 (LLNR 5795)	11511 33-06
GA	Darien River	Shoaling has been reported between Darien River Buoy 12 (LLNR 36826.3) and Darien River Buoy 14 (LLNR 36826.4). Water depth reported 5 feet low tide.	11507 06-04
GA	Beaufort River	Shoaling as been observed between Little Mud river LT 190 (LLNR 36865) and Little Mud River (LLNR 36870). Water depth reported 9 feet at low tide.	11510 35-00
GA	Doboy Sound	Shoal 500 yards WNW of DOBOY SOUND LT 8 (LLNR 5945).	11510 35-00
GA	Mackay River	Piling marked by white strobe light is protruding one foot above waterline in center of channel	11510 17-02
GA	Altamaha Sound	Shoal between ALTAMAHA SOUND LT 2 (LLNR 5950) & LT 5 (LLNR 5965)	11508 06-00
GA	Hampton River	Shoaling reported between Hampton River Daybeacon 15 (LLNR 5985) and Hampton River Daybeacon 17 (LLNR 5990).	11508 23-04
GA-ICW	St Simons Sound	Shoaling reported in vicinity of Tolomato River LB 60 (LLNR 38910). Relocated buoy to mark best water.	11485 39-06

GA	St Andrew Sound	Shoaling reported in vicinity of St Andrew Sound Buoy 2 (LLNR 6410). Depth reported 4 feet.	11508 23-04
GA	Jekyll Creek	Shoaling to a depth of 7 feet at the centerline has been reported throughout Jekyll Creek	11489 31-01
GA ICW	Savannah River	Shoaling reported in the area between Elba Island Cut LT 2 (LLNR 35880) and Elba Island Cut LT 4 (LLNR 35885), Soundings shows the depth between two and four feet, approx 20 yards into the channel between the aids.	11507 01-05
GA ICW	Jekyll Creek	Shoaling has been observed between Jekyll Creek LT 20 (LLNR 37345) and Jekyll Creek LT 20A (LLNR 37346). Water depth reported 5 feet at low tide.	11489 06-04
FL East Coast	Amelia River	Extensive shoaling reported in the vicinity of South Amelia River DBN 34 (LLNR 38100)	11489 34-01
FL East Coast	Amelia Island	An unlit pier extends into the South Amelia River at LIGHT 29 (LLNR 38080) in approx position 30-35-09N 081-27-18W	11489 04-03
FL East Coast	St Johns River	Shoaling has been reported in the channel south of Mt Royal Light 63 (LLNR 8510) to Fort Gates Light 65 (LLNR 8520). Depth reported at low water is 4 feet.	11495 24-06
FL East Coast	Ortega River	Submerged pilings on west bank of upper Ortega River extending out approx 150 ft.	11492 17-02
FL East Coast	St. Augustine	5 foot in diameter unlighted buoy anchored in 27-38-20N 080-13-15W.	11474 04-01
FL East Coast	St Lucie Inlet	St Lucie River (North Fork) DBN 2 (LLNR 50845), previously reported as destroyed, has been marked with a temporary red lighted buoy "2WR" with a Q W flash characteristic in position 27-12-08.940N, 080-15-45.585W, in 10 feet of water. A single concrete pile remains on scene, approximately 3 feet below the surface at low tide.	11428 06-03
FL East Coast	Lake George	Obstructions reported 100 yards west and 100 yds NW of Lake George South End Range Front Light (LLNR 8775).	11495 05-03
FL East Coast	Halifax River	Shoaling to an unknown depth has been reported in the vicinity of Halifax River Daybeacon 68 (LLNR 40470) and Halifax River Daybeacon 70 (LLNR 40480). The shoaling is reported to extend 40 yards from the west bank of the channel.	11485 19-01
FL East Coast	Halifax River	Shoaling to a depth of 3 feet in the vicinity of Halifax River DBN 30 (LLNR 40000) increasing to a depth of 8 feet, 20 yards to the east of the DBN	11485 28-01
FL East Coast	Matanzas Coast	66 F/V sunk in position 29-03-09N 080-52-06W.	11484 43-00
FL East Coast	Matanzas River	Shoaling reported in Mantanzas River, north of Mantanzas bridge on west side of channel Approx 20 feet into channel.	11485 09-05
FL East Coast	Matanzas River	Shoaling reported with soundings of 9 feet at low tide trying to close itself in between <u>MATANZAS RIVER LIGHT 1</u> (LLNR 39035) and Matanzas River B 2 (LLNR 39040).	11485 37-03
FL East Coast	Matanzas River	Shoaling constant near Matanzas River B 2 (LLNR 39040), and Tolomato River B 60 (LLNR 38910). Dredging operations continuous.	11485 31-00
FL East Coast	Matanzas River	Shoaling has been reported in the vicinity Matanzas River DBN 3 (LLNR 18090) Reported depths are 9.3 feet approx 300 feet WNW of DBN.	11427 29-01
FL East Coast	Matanzas River	Shoaling has been reported in the vicinity Matanzas River DBN 4A (LLNR 18100) And DBN 4B (LLNR 18105), approx 20 yds into channel	11427 42-01
FL East Coast	Matanzas River	Shoaling has been reported in the vicinity Matanzas River Buoy 81A (LLNR 39535) in approximate position 29-43-05N 081-14-45W. Shoaling to depths of 3 to 4 feet has been reported in the marked channel.	11485 07-01
FL East Coast	Ponce de Leon	Shoaling has been reported in the vicinity of Ponce de Leon Inlet. The following temporary buoys have been established to mark best water. Ponce de Leon Inlet Buoys 5A, 7A, and 10A.	11485 09-06
FL East Coast	Sebastian Inlet	A 207ft coastal freighter sank in approx position 26-0610N 080-01-15W.	11451 24-03
FL East Coast	Kissimee River	A Submerged piling has been reported in position 28-13-00.00N 081-23-00.000W in Lake Tohopekaliga, Osceola County, FL.	XXXX 35-04
FL East Coast	ST Lucie Inlet	Shoaling reported in the vicinity of St Lucie Inlet Buoy 4 (LLNR 10000), - Buoy 5 (LLNR 10125) - Buoy 6 (LLNR 10130) and - Buoy 7 (LLNR 10125)	11472 12-06
FL East Coast	St Lucie Inlet	Shoaling found in St. Lucie Inlet between Daybeacon 14 (LLNR 10160) and 16 (LLNR 10165) has been marked with a red temporary buoy 14A in position 27-09-54N 080-10-17.955W	11428 05-03
FL East Coast	Stuart	A tug and barge have sunk on east side of north/south jetty of St. Lucie Inlet. in approximate location 27-10-06N 080-08-58W.	11472 50-02
FL East Coast	Jupiter Inlet	An unlit mooring ball with letters "PBSC" in approx position 26-42.12N 080-01.54W	11466 29-03
FL East Coast	Singer Island	Shoaling has been reported in the vicinity of Singer Island Daybeacon 1 (LLNR 10211) A temporary unlighted buoy has been placed in AP 26-46-28.544N 080-02-24.413W	11472 08-06
FL East Coast	Lake Worth Inlet	Shoaling has been reported in Lake Worth Inlet in approximately position 26-46-21.064N 080-01-46.260W.	11472 39-02
FL East Coast	Boca Raton Inlet	Report of 5 ft steel mooring buoy anchored approx 220 yds southeast of Boca Inlet.	11467 17-02
FL East Coast	Boca Raton Inlet	Severe shoaling reported at the entrance to Boca Raton inlet.	11466 20-05
FL East Coast	Malloy Channel	Report of 80-100 ft black pipe obstructing channel 100 yds north of Miami Yacht Club	11467 21-02
FL East Coast	Miami River	Shoaling to an unknown depth has been reported NW of the 5th Street Bridge.	11467 11-01
FL East Coast	Biscayne Bay	Shoaling reported between Biscayne Bay Daybeacon 6A (LLNR 47820) and Biscayne Bay Daybeacon 9 (LLNR 47835).	11467 51-01
FL West Coast	Collier Bay	Dredge Pile reported near entrance to Collier Bay.	11431 20-05
FL West Coast	Capri Pass	Shoaling has been reported in vicinity of Capri Pass Light 2 (LLNR 16945) and between Capri Pass Light 3 (LLNR 16955) and Capri Pass Light 4 (LLNR 16960).	11430 24-05
FL West Coast	Lake Okeechobee	A palm tree was reported obstructing the channel 200 yards south of Lake Okeechobee (Rt2) DBN (LLNR 51550).	11428 45-02
FL West Coast	South Seas	Shoaling between South Seas Plantation Daybeacon 5 (LLNR 55730 Plantation and South	11427 12-01

FL West Coast	Fort Myers	Seas Plantation Daybeacon 21 (LLNR 55880). A partially submerged piling only visible at low tide approximately 5 ft away from Cape Coral Rim Channel DBN 65 (LLNR 53190) located in 26-33-49.773N 081-55-59.117W.	11427 50-02
FL West Coast	Matanzas Pass	Shoaling at Matanzas Pass DBN 3 (LLNR 18090) extending to – LIGHT 7 (LLNR 18120)	11427 03-03
FL West Coast	New Pass	Extensive shoaling exist from New Pass LT NP (LLNR 1345/21585 to New Pass Channel LT 7 (LLNR 21620), water depths are constantly changing and surf breaking.	11425 36-05
FL West Coast	Venice Inlet	Shoaling reported to 8 feet between VENICE INL-SIESTA KEY LT 3 (LLNR 57840) and – LT 5 (LLNR 57860).	11425 31-00
FL West Coast	Cortez Bay	Shoaling reported encroaching into the channel in the vicinity of Siesta Key-Tampa Bay Buoy 39 (LLNR 59345).	11425 03-03
FL West Coast	Siesta Key-TB	Shoaling reported in vicinity of Siesta Key-Tampa Bay Buoy 43. Shoaling extends Channel ward approximate 15yds. A depth of 5 Feet has been reported at mean-low water.	11425 07-06
FL West Coast	Charlotte Harbor	Severe shoaling has been reported in the vicinity of Charlotte Harbor Buoy 3A (LLNR 19915)	11425 31-06
FL West Coast	Tampa Bay	Shoaling reported in position 27-27.55.800N 082-41-30.137W, 145 yards from Siesta Key-Tampa Bay DBN 49 (LLNR 59570).	11425 44-01
FL West Coast	Tampa Bay	Shoaling reported in position 26-48.677N 082-15.825W between Gasparilla Snd DBN 1 (LLNR 21420) and Gasparilla Sound DBN 3 (LLNR 21425).	11425 41-02
FL West Coast	Tampa Bay	Shoaling reported between New Pass Buoy 3A (LLNR 21595) and New Pass Light (LLNR 21620), extending 20 yards channel ward.	11425 40-04
FL West Coast	Tampa Bay	Shoaling in vicinity of Sunshine Skyway Channel between DBN 2 (LLNR 60320), and Sunshine Skyway Channel DBN 3 (LLNR 60325). Also in vicinity of Sunshine Skyway Channel near DBN 2 (LLNR 60320). At low tide, best-marked water depth is only 4.5 ft.	11416 05-02
FL West Coast	Boca Ciega Bay	No Wake sign reported destroyed 100 yards south of Pinellas BaywayStructure "C" Bridge located below the waterline in approximate position 27-42.5N, 82-43.3W.	11411 03-03
FL West Coast	Pass-A-Grille	Partially submerged piling reported 50 yds off east side of Mud Key in north Pass-A-Grille.	11411 24-03
FL West Coast	Tampa Bay	195FT sunken barge approximately 11NM NW of Egmont Key	11412 52-05
FL West Coast	Tampa Bay	Shoaling reported in the vicinity of Pithlachascotee River Light 16 (LLNR 26585)	11409 20-06
FL West Coast	New Port Richey	Sunken 50FT fishing vessel approximately 312 degrees T at 2,700 yards from Cotee River Light 1 (LLNR 26505) Charts: 11409 and 11411.	11411 52-05
FL West Coast	Tampa Bay	Report of shoaling encroaching southward from Anclote Key past Anclote Anchorage South Entrance Daybeacon 3X. Depth less than published depth of 9 feet	11411 07-06
FL West Coast	Tampa Bay	A submerged 15 foot plastic piling reported approximately 80 yards bearing 225 degrees from Tampa Bay Cut F Channel Lighted Buoy 10F (LLNR 22845).	11416 30-02
FL Okeechobee	Route 1	Obstruction/Shoaling in vicinity DBN 4 (LLNR 51200)	11428 46-00
SC AICW	Winyah Bay	Shoaling near (STM 363), 1.0 miles N (Town Creek) in McClellanville, SC.	11534 31-00
SC AICW	Elliott Cut	Shoaling between Stono Riv DBN 19 (LLNR 3845) at the intersection of Elliott Cut.	11522 31-00
SC AICW	Dawho River	Continued shoaling to less than 6.5 feet in the Dawho River, near (STM 497). Encroaching 9 foot Shoal extends 20 yards into the channel from LT 110 through B 113.	11518 17-01
SC AICW	Little River	Shoaling near (STM 363), 1.0 miles N of Little Riv-Winyah Bay DBN 24B (LLNR 33725.5).	11518 31-00
SC AICW	Ashepoo River	Heavy shoaling near (STM 511) FENWICK CUT LT 162 (LLNR 35140).	11518 31-00
SC AICW	Ashepoo River	Shoaling between Ashepoo/Coosaw Cutoff Temporary Buoys 184A & - B 185 And starting in the channel near Ashepoo/Coosaw Cutoff Light 184	11518 18-01
SC AICW	Winyah Bay	Shoaling near Winyah Bay-Charleston Harbor DBN 118 (LLNR 34515), and DBN 119 (LLNR 34520) (STM 511) to 8.5 feet.	11518 31-00
SC	AICW	Shoaling to a depth of 8 feet has been reported in the vicinity of Winyah Bay-Charleston Harbor Daybeacon 37 (LLNR 34240).	11518 02-01
SC	AICW	Shoaling has been reported in the vicinity of Little River-Winyah Bay DBN 22A (LLNR 33710.5), the following temporary Buoys have been established to mark the shoal; Little River-Winyah Bay B 24A (LLNR None) Little River-Winyah Bay B 24B (LLNR None) and Little River-Winyah Bay DBN 25 (LLNR 33735) in approximate position 33-44.1N 078-52.9W.	11534 02-01
FL AICW	St Johns River	Shoaling has been observed between Gunnison Cut DBN 73 (LLNR 38270) and Sister Creek (LLNR 38300). Water depth reported 7 feet.	11489 06-04
FL AICW	Matanzas River	Shoaling has been reported north of Matanzas River Bridge, west side. Depth of 5 feet reported in position 29-33-45.571N 081-11-06.481W	11485 09-05
FL AICW	Matanzas Inlet	Shoaling has been reported in the vicinity of Matanzas River Buoy 80A (LLNR 39525.5) to a depth of 4 feet at low tide.	11485 10-06
FL AICW	Mantanzas Inlet	Shoaling has been reported in the vicinity of Mantanzas River Buoy 81A (LLNR 39535) in Position 29-43-10.198N 081-14-44.717W	11485 20-06
FL AICW	Ponce de Leon Cut	Shoaling has been reported in the vicinity of Ponce de Leon Cut Junction DBN (40615) to Ponce de Leon Cut DBN 18 (LLNR 40610). Water depth in marked channel is 6 feet at low tide.	11485 10-06
FL AICW	Tolomato River	USACE survey has reported shoaling from PABLO CREEK LT 46 (LLNR 38610) to TOLOMATO RIVER LT 3 (LLNR 38625).	11489 31-01
FL-AICW	Indian River (SS)	Shoaling reported between Indian River (SS) Daybeacon 128 (LLNR 44135) and –Daybeacon 130 (LLNR 44145).	11472 16-06
FL-AICW	Indian River (SS)	Shoaling exist across entire channel between Indian River (SS) Daybeacon 184 (LLNR 45085) and Daybeacon 186 (LLNR 45110). Reported depths of 5 feet at low tide.	11485 31-00
FL AICW	Ponce de Leon	Shoaling between Ponce de Leon Cut DBN 2 (LLNR 40500) and DBN 3 (LLNR 40505).	11485 31-00
FL AICW	Ponce de Leon	Ponce de Leon Cut Daybeacon 6 (LLNR 40530) relocated due to shoaling.	11485 10-06

FL AICW	Boynton Inlet	Heavy shoaling near Lake Worth DBN 46 (LLNR 47015).	11467 31-00
FL-AICW	Hillsboro Inlet	Shoaling has reported in Ocean Park Channel between Daybeacon 1 (LLNR 47040) and Daybeacon 8 (LLNR 47075).	11467 08-06
FL-AICW	Lake Worth inlet	Shoaling has been reported along the north side of Entrance Channel	11474 35-04
FL-AICW	Bakers Haulover	Extensive shoaling has been reported in between Biscayne Bay Daybeacon 6 (LLNR 47815) and Biscayne Bay Daybeacon 11 (LLNR 47840)	11467 50-04
FL AICW-	Biscayne Bay	The slow speed sign 50 yds south of the east span of Venetian Causeway is damaged and partially submerged.	11468 32-03
FL AICW	Venice Inlet	Shoaling 600 yards North and 200 yards South of the Albee Bridge.	11425 31-00
PR	Vieques Snd Culebra	A submerged offshore mariculture site has been established 2 miles southeast of Culebra Island and is outlined by coordinates 18-16.67N 065-20W, 18-16.4N 065-19.72W	25650 32-02

A. BRIDGE CONSTRUCTION/REPAIR

Location	Type of Work	EST Comp Date	Bridge	Ref LNM
SC-Charleston Hbr-Cooper Riv	Bridge Construction	NOV 07	Grace Memorial Bridge	48-02
SC-Charleston Hbr-Cooper Riv-Town Cr	Bridge Construction	NOV 07	Silas N. Pearman Bridge	48-02/34-06
SC-Charleston Hbr-Cooper Riv Bridges	Demolition	NOV 07	Grace Memorial/Pearman	34-05/34-06
FL-St. Johns Riv-Trout Riv	Bridge Construction	MAR 08	I-95 Bridge	12-05
FL-St. Johns Riv-Ortega Riv	Bridge Repairs	JAN 07	Ortega Riv Drawbridge	35-06/38-06
FL-St. Johns Riv-Ortega Riv	Bridge Repairs	JAN 07	Ortega Riv Bridge	35-06/38-06
FL-ICW-Jacksonville Bch	Bridge Construction	FEB 09	McCormick (Beach Blvd)	34-06
FL-ICW-St. Augustine	Bridge Construction	JAN 07	Bridge of Lions Bridge	08-05/21-05
FL-ICW-Indian Riv-Pineda	Bridge Repairs	APR 07	Pineda Cswy Bridge A	34-06
FL-ICW-Indian Riv-Banana Riv	Bridge Repairs	NOV 06	SR 520 Bridge	33-06/35-06
FL-ICW-Banana Riv-Grand Canal	Bridge Repairs	NOV 06	Tortoise Island Bridge	34-06
FL-ICW-Banana Riv-Sykes Cr	Bridge Repairs	APR 07	SR 528	47-06
FL-ICW-Indian Riv (S Sec)	Bridge Demolition	DEC 06	Ernest F. Lyons Bridge	34-06/42-06
FL-ICW-W Palm Bch	Bridge Repairs	MAR 07	PGA Blvd Bridge	23-05
FL-ICW-Hollywood	Bridge Repairs	JUL 07	Hollywood Blvd Bridge	15-06/34-06
FL-ICW-Biscayne Bay-Indian Ck	Bridge Repairs	DEC 06	E 79 th St Cswy Bridge	34-06/40-06
FL-ICW-Biscayne Bay-Indian Ck	Bridge Repairs	JAN 07	E 63 rd St Bridge	27-06/34-06
FL-ICW-Biscayne Bay-Indian Ck Canal	Bridge Repairs	MAR 07	W 63 rd St Fixed Bridge	36-06
FL-OWW-St. Lucie Canal	Fender Repairs	NOV 06	FEC R/R Bridge	41-06/43-06
FL-OWW-Caloosahatchee Riv	Bridge Repairs	DEC 06	Cape Coral Bridge	38-06
FL-ICW-Okeechobee-Sanibel	Bridge Construction	JAN 07	Sanibel Cswy Bridge	27-05
FL-Anna Maria Sound-Bimini Bay	Bridge Construction	APR 07	Key Royale Dr Bridge	23-06
FL-ICW-Treasure Island	Bridge Construction	NOV 06	Treasure Isl Bridge	14-06
FL-Johns Pass	Bridge Construction	JAN 09	Johns Pass Bridge	07-06/08-06

B. DRAWBRIDGE STATUS SUMMARY

The following is a list of known drawbridge discrepancies, restrictions, and closures in navigable waters of the Seventh Coast Guard District. Additional information regarding bridges can be found in Volume 4 (Cape Henry to Key West) or volume 5 (Gulf of Mexico, Puerto Rico and Virgin Islands) of the U.S. Coast Pilot, 33 CFR 117, or by calling (305) 415-6743. Unless otherwise noted in the date column, the described status will be in effect until further notice. Mariners knowing of bridge activities not listed below are urged to notify the nearest Coast Guard unit.

BRIDGE	LOCATION	DATE	STATUS	REF
Tortoise Isl	Grand Canal, Satellite Bch	Until Nov 30, 06	Single-leaf Ops	34-06
PGA	ICW, W Palm Bch, FL	Until Feb 28, 07	Single-leaf Ops	34-06/42-06
Oakland Park	ICW, Ft Lauderdale, FL	Until Nov 26, 06	Single-leaf Ops/Special Regs	35-06
Hollywood Blvd	ICW, Hollywood, FL	Until Jul 27, 07	Single-leaf Ops	15-06/42-06
E 79 th St	Indian Cr, Miami, FL	Until Dec 15, 06	Closed to navigation	40-06/47-06
63 rd St	Indian Cr, Miami, FL	Until Jan 10, 07	Hourly Openings/Special Regs	27-06/39-06

C. BRIDGE INFORMATION.

SOUTH CAROLINA – CHARLESTON HARBOR – COOPER RIVER: Temporary Safety Zone.

The Coast Guard is establishing a temporary safety zone on the navigable waters of Hog Island Reach on the Cooper River, for the demolition and recovery operations of the Grace Memorial and Silas Pearman Bridges. This rule prohibits entry, anchoring, mooring, or transiting within the temporary safety zone without the permission of the Captain of the Port Charleston or his designated representative. This regulation is necessary to protect life and property on the navigable waters of the Cooper River from the danger associated with the demolition and recovery operations of these bridges. This rule is effective until 8:01 a.m. on December 31, 2006.

For further information contact Chief Warrant Officer James J. McHugh, Sector Charleston office of Waterways Management at 843-724-7647.

Ref: LNM 08 through 46-06 and Docket Number (COTP Charleston 06-003) Chart: 11524

GEORGIA – ST MARYS – CUMBERLAND SOUND: Survey Operations.

The Coast Guard Captain of the Port Jacksonville advises all mariners of intermittent survey operations on the navigable channel throughout Cumberland Sound from November 6, 2006 to December 13, 2006. Operations will not impact commercial traffic entering the

Port of Fernandina. Marine traffic requiring full channel clearance should contact the Research Vessel R/V SAVANNAH on VHF-FM Channel 13 to make arrangement for safe passage.

Ref: LNM 45 and 46-06

Chart: 11502, 11503

FLORIDA – ST JOHNS RIVER – JACKSONVILLE – FULLER WARREN BRIDGE: Bridge Demolition.

The Captain of the Port Jacksonville advises all mariners that the navigable channel in the vicinity of the Old Fuller Warren Bridge will be periodically restricted for ongoing bridge demolition November 6th through December 9th, 2006. The navigable channel will be restricted to a 100 foot horizontal clearance from 7:00 a.m. to 5:30 p.m. during that time. Mariners requiring more than 100 foot horizontal clearance may request a full channel opening by contacting the Tug ST JOHNS and/or Tug BANTAM on VHF-FM channel 13, two hours in advance. All marine traffic should take caution when passing through this portion of the St. Johns River. This work is expected to continue until February 2007.

Additional channel will be published at a later data.

Chart: 11491

FLORIDA – MIAMI ENTRANCE CHANNEL – MIAMI RIVER: Bridge Inspections.

Mariners may expect short opening delays at the Northwest 17th Avenue Drawbridge across the Miami River on December 2, from 7:00 a.m. to 3:30 p.m., due to a bridge inspection. Mariners may also expect short opening delays at the Northwest 22nd Avenue Drawbridge across the Miami River on December 3, 2006, from 7:00 a.m. to 3:30 p.m., due to a bridge inspection.

Chart: 11468

FLORIDA – LOSTMANS RIVER TO WIGGINS PASS– ROBERTS BAY – WINTERBERRY WATERWAY– MARCO ISLAND: Special Bridge Notice.

The Coast Guard has issued a public notice announcing a permit application from the City of Marco Island for the approval of location and plans to replace the existing low-level fixed Winterberry Drive Bridge, across Winterberry Waterway, mile 0.1 from its confluence with Roberts Bay, at Marco Island, Collier County, Florida. This public notice 23-06 which solicits comments for a thirty day period is attached to Local Notice to Mariners 42-06. The project manager is Mr. Randall Overton at (305) 415-6749.

Ref: LNM 42 through 46-06
Chart: 11430

CG File: 3846

FLORIDA – LOSTMANS RIVER TO WIGGINS PASS– ROBERTS BAY – WINTERBERRY WATERWAY– MARCO ISLAND: Notice of Proposed Rulemaking.

The Coast Guard proposes to change the operating regulations of the Outer Clam Bay boardwalk bridge, mile 0.3, near North Naples in Collier County, Florida. This proposed rule would require the draw to open on signal, with at least 30 minutes advance notice. This proposed action will allow the unrestricted movement of pedestrian traffic while not unreasonably interfering with the movement of vessel traffic.

Comments and related material must reach the Coast Guard on or before January 16, 2007. You may mail comments and related material to Commander (dpb), Seventh Coast Guard District, 909 SE. 1st Avenue, Room 432, Miami, FL, 33131. FOR FURTHER INFORMATION CONTACT: Mr. Barry Dragon, Seventh Coast Guard District, Bridge Branch, at (305) 415-6743 or email Michael.b.lieberum@uscg.mil.

Chart: 11430

CG File: 3741

FLORIDA – ATLANTIC INTRACOASTAL WATERWAY – ST AUGUSTINE – BRIDGE OF LIONS: Bridge Maintenance.

The Coast Guard Captain of the Port Jacksonville advises that the channel under the Bridge of Lions, Intracoastal Waterway mile 797.9, St. Augustine, Florida will be closed to navigation between 8:00 p.m. to 2:00 a.m. and 2:05 a.m. to 6:00 a.m. from November 27 to December 1, 2006, December 4 to December 8, 2006, and from December 11 to December 13, 2006.

Marine traffic with declared emergency or request for bridge opening should contact the Tug ALBERT PIKE or the bridge tender on VHF-FM channel 9 to arrange for safe passage.

Ref: LNM 08, 09, 14, 18, 25-05, 37 through 46-06

Chart: 11489

FLORIDA – ATLANTIC INTRACOASTAL WATERWAY – INDIAN RIVER – BANANA RIVER – SYKES CREEK – SR 528 BRIDGE: Bridge Repairs.

The SR 528 Bridge across Sykes Creek, Merritt Island, Brevard County, Florida is being repaired. The horizontal clearance has been reduced to 30 feet. This work will continue until April 15, 2006.

Chart: 11472

FLORIDA – ATLANTIC INTRACOASTAL WATERWAY – PALM SHORES TO WEST PALM BEACH – INDIAN RIVER (SOUTH SECTION) – ERNEST F. LYONS BRIDGE: Bridge Construction/Demolition.

The demolition of the Ernest F. Lyons (Ocean Boulevard) Bridge, Atlantic Intracoastal Waterway mile 984.9, Martin County, Florida is scheduled to begin on September 27, 2006 and will continue until December 30, 2006. During this time period there will be periodic waterway closures and marine traffic delays. Updates will be provided via future Broadcasts and Local Notice to Mariners.

Ref: LNM 34 through 46-06
Chart: 11472

CG File: 3839

FLORIDA – ATLANTIC INTRACOASTAL WATERWAY – LAKE WORTH INLET TO JUPITER INLET – PGA BOULEVARD BRIDGE: Bridge Repairs/Update.

The PGA Boulevard Bridge (SR 786), Intracoastal Waterway mile 1012.6, West Palm Beach, Florida is on single-leaf operations until February 28, 2007.

Due to ongoing construction the following bridge restrictions will be in place, at all other times this bridge will open a double-leaf on the hour and half-hour with a two hour notice to the bridge tender:

1. From 7:00 a.m. to 6:00 p.m. daily between November 13 and November 15, 2006, this bridge will be on single-leaf operations only on the hour and half-hour.
2. From 7:00 a.m. on November 16 through 10:00 a.m. on November 18, 2006, this bridge will be on single-leaf operations only on the hour and half-hour.
3. During the first week of December 2006 the contractor will need two four hour closure periods to align the bridge. The exact dates will be published in a future Local Notice to Mariners.
4. In January 2007, the contractor will need to close the bridge for a 48 hour period. The exact dates will be published in a future Local Notice to Mariners.

Ref: LNM 23 through 46-06 and BNM 276-05-MIA
Chart: 11467

CG File: 3132

FLORIDA – ATLANTIC INTRACOASTAL WATERWAY – WEST PALM BEACH TO MIAMI – OAKLAND PARK BOULEVARD BRIDGE: Bridge Painting.

The Oakland Park Boulevard Bridge, Intracoastal Waterway mile 1060.5, Fort Lauderdale, Broward County, Florida is on single-leaf operations until November 22, 2006. A double-leaf opening is available with a three hour notice to the bridge tender. The vertical clearance of this bridge has been reduced by five feet throughout the project length.

Ref: LNM 35 through 46-06
Chart: 11467

CG File: 2947

FLORIDA – ATLANTIC INTRACOASTAL WATERWAY – WEST PALM BEACH TO MIAMI – NEW RIVER: Final Rule.

The Coast Guard is changing the operating regulation governing the operation of the SE. Third Avenue, Andrews Avenue and Marshal (Seventh Avenue) bridges across the New River, miles 1.4, 2.3, and 2.7 and the regulations governing the operation of the Davie Boulevard (SW. Twelfth Street) bridge across the New River, South Fork, mile 0.9, Fort Lauderdale, Broward County, Florida

DATES: This rule is effective December 8, 2006. FOR FURTHER INFORMATION CONTACT: Mr. Michael Lieberum, Project Manager, Seventh Coast Guard District, Bridge Branch, 305-415-6744.

Final Rule

Sec. 117.313 New River.

(a) The draw of the S.E. Third Avenue bridge, mile 1.4 at Fort Lauderdale shall open on signal; except that, from 7:30 a.m. to 9 a.m. and 4:30 p.m. to 6 p.m., Monday through Friday, except Federal holidays, the draw need not open. Public vessels of the United States, tugs with tows, and vessels in distress shall be passed at any time.

(b) The draw of the Andrews Avenue bridge, mile 2.3 at Fort Lauderdale, shall open on signal; except that, from 7:30 a.m. to 9 a.m. and 4:30 p.m. to 6 p.m., Monday through Friday, except Federal holidays, the draw need not open. The draw need not open for inbound vessels when the draw of the Florida East Coast Railroad bridge, mile 2.5 at Fort Lauderdale is in the closed position for the passage of a train. Public vessels of the United States, tugs with tows, and vessels in distress shall be passed at any time.

(c) The draw of the Marshal (Seventh Avenue) bridge, mile 2.7 at Fort Lauderdale shall open on signal; except that, from 7:30 a.m. to 9 a.m. and 4:30 p.m. to 6 p.m., Monday through Friday, except Federal holidays, the draw need not open. Public vessels of the United States, tugs with tows, and vessels in distress shall be passed at any time.

Sec. 117.315 New River, South Fork.

(a) The draw of the Davie Boulevard (SW. Twelfth Street) bridge, mile 0.9 at Fort Lauderdale shall open on signal; except that, from 7:30 a.m. to 9 a.m. and 4:30 p.m. to 6 p.m., Monday through Friday, except Federal holidays, the draw need not open. Public vessels of the United States, tugs with tows, and vessels in distress shall be passed at any time..

Ref: Public Notice 29-06, LNM 26-06 and Federal Register Docket #CGD07-06-019
Chart: 11467

FLORIDA – ATLANTIC INTRACOASTAL WATERWAY – WEST PALM BEACH TO MIAMI – HOLLYWOOD BOULEVARD BRIDGE: Bridge Construction.

The Hollywood Boulevard Bridge, Intracoastal Waterway mile 1072.2, Hollywood, Broward County, Florida will be on single-leaf operations on the hour and half-hour from April 17, 2006 to July 27, 2007, due to construction. A double-leaf opening will be available with a two-hour notice to the bridge tender. The horizontal clearance will be reduced to 50 feet during this time period.

LNM 15-06 through 46-06 and Federal Register Docket # CGD07-06-204
Chart: 11467 CG File: 2899

FLORIDA – ATLANTIC INTRACOASTAL WATERWAY – WEST PALM BEACH TO MIAMI – BISCAYNE BAY – INDIAN CREEK – EAST 79TH STREET CAUSEWAY BRIDGE: Bridge Repairs/Update.

The contractor repairing the East 79th Street Causeway Drawbridge across Indian Creek, Biscayne Bay, Miami, Miami-Dade County, Florida has advised the Coast Guard that they are unable to open the drawbridge through December 15, 2006.

Ref: LNM 26 through 45-06 Chart: 11467

FLORIDA – ATLANTIC INTRACOASTAL WATERWAY – WEST PALM BEACH TO MIAMI – BISCAYNE BAY – INDIAN CREEK – 63RD STREET BRIDGE: Bridge Repairs.

The 63rd Street Bridge, Indian Creek mile 4.0, Miami Beach, FL will open a single-leaf on the top of the hour from 8:00 am to 5:59 p.m. and a double-leaf on the top of the hour between 6:00 pm and 12:10 am until January 10, 2007. This bridge will be closed to navigation at all other times.

Ref: LNM 27 through 46-06 and BNM 367, 454-06-MIA CG File: 2362
Chart: 11467

FLORIDA – ATLANTIC INTRACOASTAL WATERWAY – WEST PALM BEACH TO MIAMI – BISCAYNE BAY – INDIAN CREEK CANAL – WEST 63RD STREET BRIDGE: Bridge Repairs.

The West 63rd Street Fixed Bridge, Indian Creek Canal mile 4.0, Miami Beach, FL vertical and horizontal clearances will be reduced due to repairs from September 7 to March 31, 2007.

Ref: LNM 36 through 46-06 CG File 2362
Chart: 11467

FLORIDA – ATLANTIC INTRACOASTAL WATERWAY – WEST PALM BEACH TO MIAMI – VENETIAN CAUSEWAY: Notice of Proposed Rulemaking.

The Coast Guard proposes to change the regulations governing the Venetian Causeway (West) drawbridge, Atlantic Intracoastal Waterway, mile 1088.6, and Venetian Causeway (East) drawbridge, Biscayne Bay, Miami, Miami-Dade County, Florida. This proposed rule will require these drawbridges to open on signal, except that from 7 a.m. to 7 p.m., Monday through Friday, except Federal holidays the drawbridges will open on the hour and half-hour. This proposed rule will change the individual Federal holiday dates and align it with all Federal holidays. Comments and related material must reach the Coast Guard on or before December 4, 2006.

For Further Information Contact: Mr. Michael Lieberum, Seventh Coast Guard District, Bridge Branch at (305) 415-6744 or email michael.b.lieberum@uscg.mil.

Ref: LNM 41 through 46-06 and Docket Number CGD07-06-050 CG Files: 2351/2495
Chart: 11467, 11468

FLORIDA – OKEECHOBEE WATERWAY – ST. LUCIE CANAL – ROOSEVELT BRIDGE: Fender Repair.

The old Roosevelt (SR 707) Bridge fender system, Okeechobee Waterway mile 7.4, Stuart, Martin County, Florida is being repaired from October 26 through November 30, 2006. The contractor will be working outside the navigable channel. Mariners are requested to maintain minimum speed through this area.

Ref: LNM 41 through 46-06 CG File: 3782
Chart: 11428

FLORIDA – OKEECHOBEE WATERWAY – CALOOSAHATCHEE RIVER – CAPE CORAL BRIDGE: Bridge Repairs.

The horizontal clearance of the Cape Coral Bridge, Okeechobee Waterway mile 142.0, Cape Coral, Lee County, Florida will be reduced to 45 feet from 7:00 a.m. to 5:00 p.m. daily until December 18, 2006, due to repairs.

Ref: LNM 38 through 46-06
Chart: 11428

CG File: 3091

FLORIDA – OKEECHOBEE WATERWAY – CALOOSAHATCHEE RIVER – SAN CARLOS BAY - SANIBEL CAUSEWAY BRIDGE: Bridge Construction.

Work continues on the Sanibel Causeway Bridge across the Caloosahatchee River, Sanibel, Lee County, Florida. Due to this bridge construction the vertical clearance will be reduced to 68 feet until approximately January 15, 2007. During the week of November 27, 2006, the channel under the Sanibel Causeway Bridge Span "A" will be closed to navigation for one day from 6:00 a.m. to 6:00 p.m. while the center span is set in place. A Broadcast Notice to Mariners will be issue once the exact date is determined.

Ref: BNM 1486-06-STP and LNM 25-05 through 47-06

Chart: 11428

FLORIDA – GULF INTRACOASTAL WATERWAY – SIESTA KEY TO TAMPA BAY – ANNA MARIA SOUND: Supplemental Notice of Proposed Rulemaking.

The Coast Guard is proposing a supplemental change to its notice of proposed rulemaking for modifying the Cortez and Anna Maria drawbridge operating regulations. This supplemental notice of proposed rulemaking is necessary to address written concerns from the public regarding the original notice of proposed rulemaking and oral comments received during a public meeting. Additionally, city officials from Anna Maria, Bradenton Beach and Longboat Key contributed their input to this rulemaking in an effort to relieve vehicular congestion on the above bridges.

This proposed rule would require the Cortez (SR 684) and Anna Maria (SR 64) bridges, miles 87.4 and 89.2, at Anna Maria to open on signal, except that from May 16 through January 14, from 6 a.m. to 7 p.m., the draw need open only on the hour, twenty minutes past the hour and forty minutes past the hour. From January 15 through May 15, the draws need open only on the hour and half-hour from 6 a.m. to 7 p.m. The objective of this revision is to improve vehicle traffic flow on SR 684 and SR 64, especially during peak periods of increased road congestion.

Comments and related material must reach the Coast Guard on or before December 8, 2006

Written comments may be submitted to Commander (dpb), Seventh Coast Guard District, 909 S.E. 1st Avenue, Room 432, Miami, Florida 33131-3050. For further information contact Mr. Michael Lieberum at 305-415-6744 or email mlieberum@d7.uscg.mil. Please include your name and address in all correspondence.

Ref: Public Notice 28-06 and Docket Number (CGD07-05-097)

Chart: 11411

SAFE BOATING AND SEAMANSHIP PROGRAMS

For addition information on CG Auxiliary Public Education Boating Programs, contact 1-800-336-2628 or <http://www.cgaux7.org/>

HOST	DATES	TIME	LOCATION
U.S. Coast Guard Auxiliary Flotilla 42 (321) 773-7599	Continuous Boating Skills and Seamanship	7:30 p.m.– 9:30 p.m. (Tuesdays & Thursdays) 6 Weeks, 12 Lessons	Palm Bay Community Ctr 1502 Port Malabar Blvd Palm Bay, FL
U.S. Coast Guard Auxiliary Flotilla 78 (727) 360-7496	Continuous Boating Skills and Seamanship	7:30 p.m.– 9:30 p.m. (Mondays) 13 Weeks	Webster Community Ctr 1500 Passe Grille Blvd St Petersburg, FL
U.S. Coast Guard Auxiliary Flotilla 79 (813) 855-6997	Continuous Boating Skills and Seamanship	7:30 p.m.– 9:30 p.m. (Wednesdays) 13 Weeks	5108 Gandy Blvd Salty Sol Boat Ramp Tampa, FL
U.S. Coast Guard Auxiliary Flotilla 7-16 (727) 323-5950	Continuous Boating Skills and Seamanship	7:30 p.m.– 9:30 p.m. (Tuesdays) 13 Weeks	USCG Auxiliary Bldg 3120 Miriam St South Gulfport, FL
U.S. Coast Guard Auxiliary Flotilla 51 (561) 844-3114	Continuous Boating Skills and Seamanship	7:30 p.m.– 9:30 p.m. (Tuesdays & Thursdays) 6 Weeks, 12 Lessons	CG Aux Bldg, P Foster Park 900 E. Blue Heron Blvd Riviera Beach, FL
U.S. Coast Guard Auxiliary Flotilla 55 (561) 585-8918	Continuous Boating Skills and Seamanship	7:00 p.m.– 9:00 p.m. (Mondays & Wednesdays) 6 Weeks, 12 Lessons	Santaluces High School Lawrence Road Lantana, FL
U.S. Coast Guard Auxiliary Flotilla 52 (772) 744-3876	Continuous Boating Safety Program	9:00 a.m.– 5:00 p.m. (Last Saturday of Each Month)	CG Aux Building Jupiter Lighthouse Park Jupiter, FL
U.S. Coast Guard Auxiliary Flotilla 81 (941) 761-4303/761-7393	Continuous Boating Skills and Seamanship	7:00 p.m.– 9:00 p.m. (Tuesdays & Thursdays) 4 Weeks	CG Aux Bldg, G.T.Bray Park 5801 53 rd Ave Court W Bradenton, FL
U.S. Coast Guard Auxiliary Flotilla 14-08 (904) 721-1346	Continuous Boating Safety Program	7:30 a.m.– 5:00 p.m. (Saturdays)	Stellar Building 2900 Hartley Road Jacksonville, FL
U.S. Power Squadron Fort Lauderdale (954) 523-3577	Continuous Basic Safe Boating Course	7:00 p.m. – 9:00 p.m. (1 st Monday of each month)	Lauderdale Marine Ctr 2029 SW 20 th Street Fort Lauderdale, FL
U.S. Coast Guard Auxiliary Flotilla 11-1 (727) 469-8895	Continuous America's Boating Course	7:30 p.m. – 9:30 p.m. (Mondays and Thursdays)	Clearwater Comm Sailing Ctr 1001 Gulf Blvd Sand Key (Clearwater), FL
U.S. Coast Guard Auxiliary Flotilla 09-06 (239) 594-8009	October 23 to December 7, 2006 Boating Skills & Seamanship	7:00 p.m. – 9:00 p.m. (Mondays and Thursdays)	Public Education Facility Wiggins Pass Naples, FL
U.S. Coast Guard Auxiliary Flotilla 09-06 (239) 594-8009	November 18, 2006 Local Knowledge	9:00 a.m. – 12:00 p.m. (Saturday)	Public Education Facility Wiggins Pass Naples, FL

U.S. Coast Guard Auxiliary
Flotilla 09-06
(239) 594-8009

December 2, 2006
GPS for Mariners

9:00 a.m. – 12:00 p.m.
(Saturday)

Public Education Facility
Wiggins Pass
Naples, FL

U.S. Coast Guard Auxiliary
Flotilla 09-06
(239) 594-8009

December 16, 2006
Local Knowledge

9:00 a.m. – 12:00 p.m.
(Saturday)

Public Education Facility
Wiggins Pass
Naples, FL

Programs are free; there is a nominal fee for text workbooks, etc.



U. S. Department of Homeland Security
U. S. Coast Guard Sector Charleston
Marine Safety Information Bulletin



MSIB 049-06

10 MAY 2006

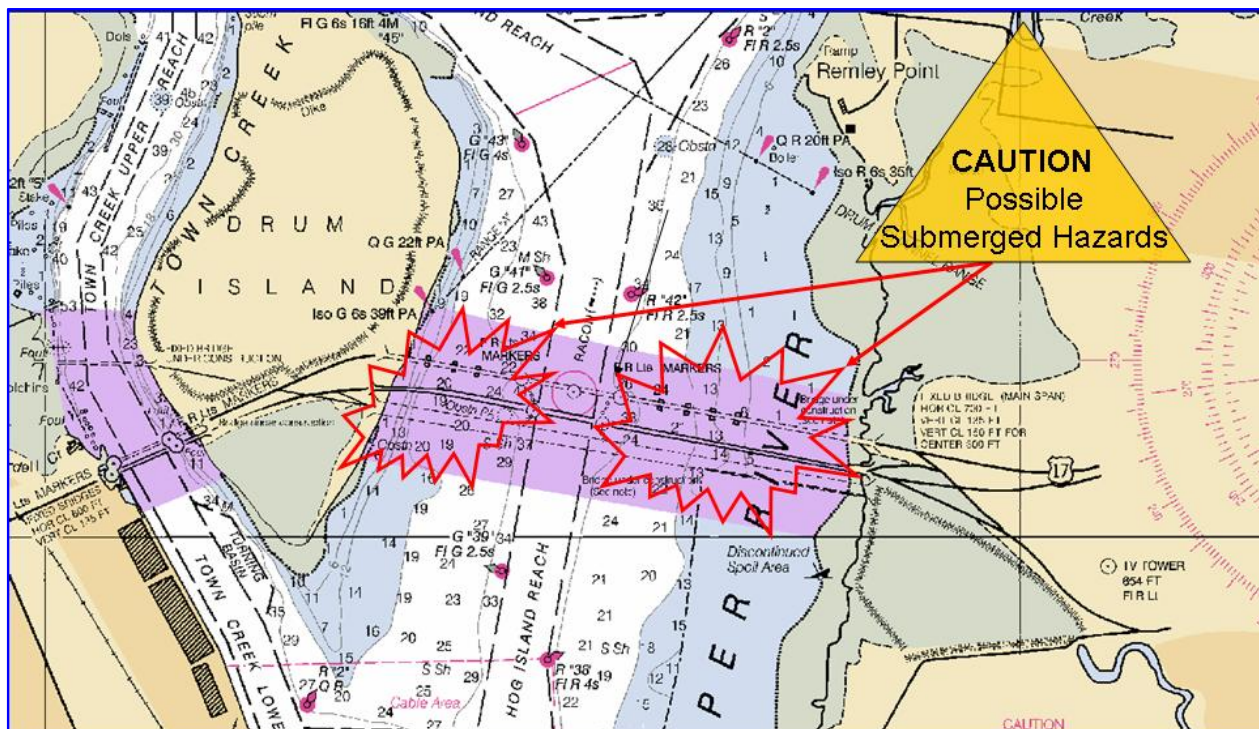
**POSSIBLE SUBMERGED HAZARDS/DEMOLITION DEBRIS IN COOPER RIVER
SHALLOWS FOR DURATION OF GRACE AND PEARMAN BRIDGE DEMOLITION**

Boaters are advised to stay in the main channel when transiting under the new Ravenel Bridge on the Cooper River. The South Carolina Department of Transportation and their demolition contractor are in the process of removing the remaining foundations for the Grace and Pearman bridges. This project will continue into 2007. During this period, there is the possibility of both partially submerged hazards and demolition debris in the areas outside the main channel. The contractor's work area will be marked with temporary buoys, but these buoys may not be visible at night. To avoid hazards boaters should transit only through the main Cooper River channel (HOG ISLAND REACH) or should consider using Town Creek channel as an alternate route.

Boaters are also reminded to obey Navigation Rule 9 and give large ships the right of way while in or planning to cross the main channel. Vessels less than 20 meters long, and sailing vessels, shall not impede the passage of a vessel that can safely navigate only within a narrow channel.

The U.S. Coast Guard has designated the waters under the old and new bridges as a Regulated Navigation Area (shown below in purple). All vessels are prohibited from anchoring, mooring, or loitering within the regulated area, unless specifically authorized by the U.S. Coast Guard.

Boaters should contact Coast Guard Sector Charleston's 24x7 operations center on VHF channel 16 or via phone at (843) 724-7616 to report any concerns or ask any questions about this notice.



“You’re in Command. Please Boat Responsibly!”

U.S. Department of
Homeland Security

United States
Coast Guard



Commander
United States Coast Guard
Sector Miami

100 MacArthur Causeway
Miami Beach, FL 33139-6940
Phone: 305-535-8701
FAX: 305-535-8740

Marine Safety Information Bulletin

Port of Palm Beach Draft Restriction – Update #1

Time: 1600/Date: September 11, 2006

The Army Corps of Engineers has completed soundings of the Lake Worth Inlet entrance channel and found shoaling caused by Tropical Depression ERNESTO to be extensive throughout the area. The Captain of the Port has imposed a draft restriction of 28 feet at high water slack on all inbound vessel, 27 feet for vessels carrying oil products, and 29 feet for all outbound vessels. These restrictions will remain in effect until further notice. Palm Beach Harbor Pilots may impose additional restrictions as conditions warrant, in coordination with the Captain of the Port.

The Captain of the Port may be reached at telephone (305) 535-8701, or via Channel 16 VHF FM Marine Radio through Coast Guard Sector Miami.

KARL SCHULTZ
Captain, U.S. Coast Guard
Captain of the Port

Publication—National Ocean Service—U.S. Coast Pilot 5, Atlantic Coast: Gulf of Mexico, Puerto Rico, and Virgin Islands, 2006 (34th) Edition. Change No. 18.

Coast Pilot 5 34th Ed 2006

Corrections

Page 390-Paragraph 123, line 6;
read:
maintained by the Corps of
Engineers. In January-October 2006,
...

(DDs 8256-59)

Page 403-Paragraph 296, read:
Freshwater Bayou Channel, a
dredged channel, leads from the
Gulf to the entrance of **Freshwater
Bayou Canal**. Freshwater Bayou Canal
continues N to the Intracoastal
Waterway near Intracoastal City. A
lighted bell buoy marks the
approach, and lights and buoys mark
the approach channel to the
entrance of the canal. Lights mark
the canal to its junction with the
Intracoastal Waterway. A saltwater
barrier lock is about 1.3 miles
above the entrance. The lock is 600
feet long, 84 feet wide, and has
depths of 16 feet over the sills.
Each end of the lock on the W side
of the channel has 300-foot-long
timber guidewall approaches. The
lock is in operation continuously.
In August 2006, the controlling
depth was 8 feet (9 feet at
midchannel) in the entrance channel
to the lock; thence in January-July
2006, 6 feet through the canal to
Light 20; thence in January 2006, 9
feet to the canal junction with the
Intracoastal Waterway.

(DDs 8077-81; DDs 6930-43)

Page 404-Paragraph 319, lines 1-5;
read:

In August 2006, the
controlling depths were 10 feet
from the Gulf of Mexico through the
jettied entrance channel to Lower
Mudd Lake, thence 8 feet through
the marked channel in Lower Mudd
Lake to the junction with the
natural channel, thence 5 feet to
the State Route 82 highway bridge,
thence in April-August 2006, 1 foot
to ...

(DDs 8082-86; DDs 7507-17)

Page 410-Paragraph 391, line 6;
read:

Island, which was formed by the
river and ship channel. In
September 2006, the ferry to Monkey
Island was reported no longer in
operation.

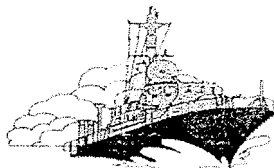
(DB 14564)

Page 583-Paragraph 133, lines 2-3;
read:
Boggs Federal Building, 500 Poydras
Street, New Orleans, LA 70130-3310.
Coastal waters and tributaries of
...

(CL 1304/06; 45/06 CG8)



US Army Corps
of Engineers
Jacksonville District

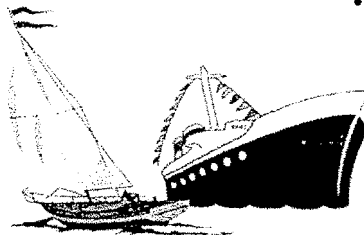


904-232-3974

NOTICE TO NAVIGATION INTERESTS



In reply refer to:
CESAJ-CO-OM
P.O. Box 4970
Jacksonville, FL 32232-0019



CESAJ-CO-OP (1130)


November 08, 2006

LOCKAGE DELAYS

CANAVERAL LOCK, BANANA RIVER, FLORIDA

1. Navigation interests are advised that Canaveral Lock will have lockage delays up to two hours during weekday operations Monday through Friday during the hours 0700 - 1700 from November 15, 2006, through February 2007.
2. Fuel barges and other essential commercial traffic are requested to coordinate their transit with lock personnel prior to arrival.
3. These delays are required due to scheduled maintenance on the timber guide walls.
4. Additional information concerning Canaveral Lock and the adjoining waterway may be obtained by accessing the Jacksonville District web site at <http://www.saj.usace.army.mil> and link either to the NAVIGATION and/or WATER MANAGEMENT selections. Army Corps of Engineers Point of Contact is the Canaveral Lock staff at (321)-783-5421.

FOR THE COMMANDER:


for ROBERT A. BUGG, P.E.

Chief, Construction-Operations
Division