

What is the Wellton-Mohawk Generating Facility?

Project proponent Dome Valley, LLC, proposes to build and operate a natural gas-fired, combined-cycle electricity generation facility, a solar collection field and related facilities in unincorporated Yuma County, Ariz.

Phase 1 would have a rated capacity of 260 megawatts, with peaking capacity of 310 MW by using duct burners. The second phase would have a 520-MW rated capacity, with peaking capacity of 620 MW by using duct burners.

Each phase would include:

- a combustion turbine
- a heat recovery steam generator
- a steam turbine
- a condenser
- administration/maintenance building
- a transformer
- cooling towers
- tanks
- sedimentation/evaporation ponds
- auxiliary boilers
- an emergency generator
- an emergency fire pump

U.S. DEPARTMENT OF ENERGY
 WESTERN AREA POWER ADMINISTRATION
 P.O. BOX 281213
 LAKEWOOD, CO 80228-8213

Wellton-Mohawk **PROJECT UPDATE**

GENERATING FACILITY

Summer 2004

Dome Valley, LLC, has filed a request for an interconnection with Western Area Power Administration's transmission system at Ligurta Substation in Arizona. Western studied the project's effect on the transmission system and found that the new generation would require transmission upgrades and additions. As a result, Western must prepare an Environmental Impact Statement under the National Environmental Policy Act.

Western's Ligurta Substation, about 25 miles east of Yuma and nine miles west of Wellton, Ariz., just north of Interstate 8.

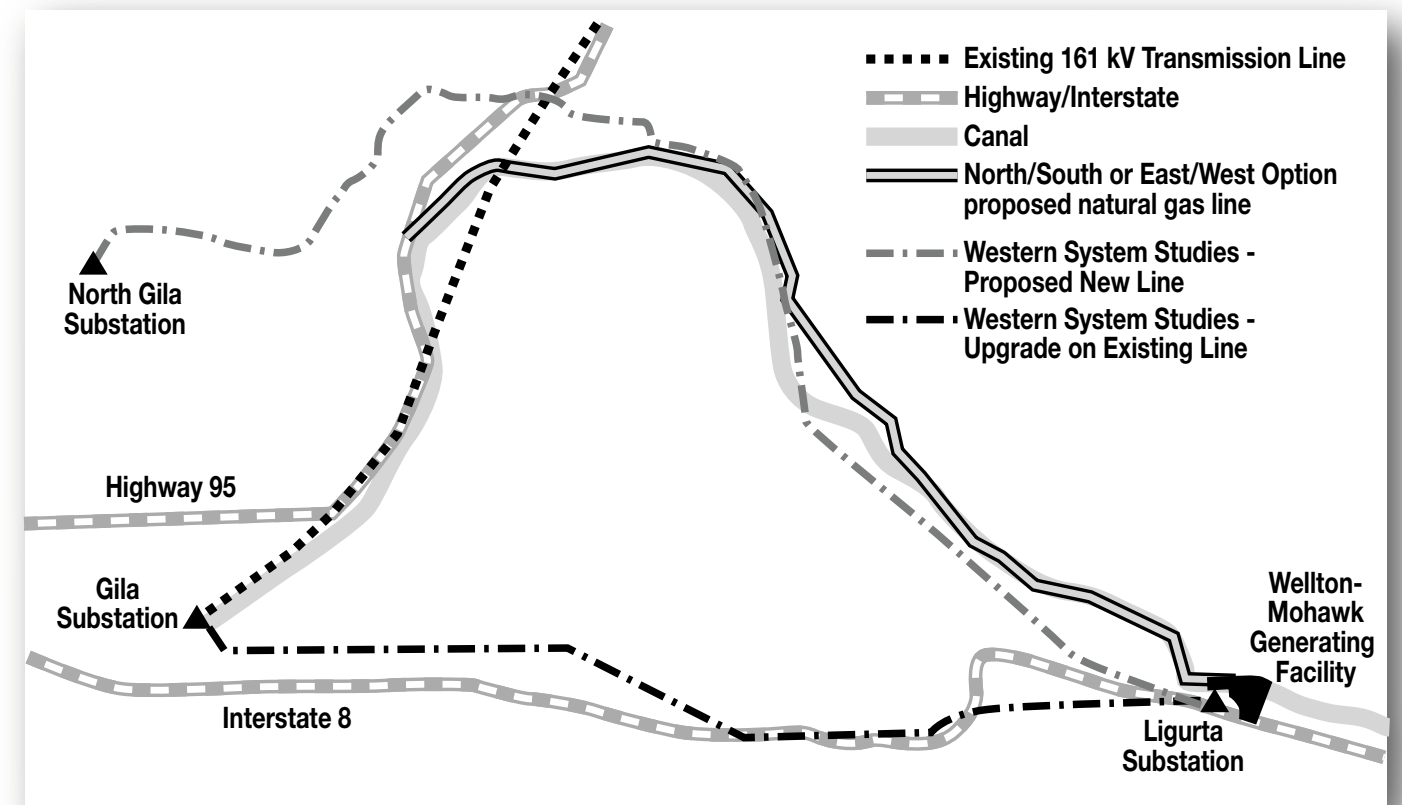
What changes would Western need to make to its system to accommodate the new powerplant?

Western's proposed actions would include:

- Upgrading the existing Ligurta Substation
- Upgrading Western's existing 12.7-mile Ligurta-to-Gila transmission line
- Adding 75-MVA transformer capacity between the 161-kV and 69-kV sides of Western's Gila Substation near Yuma

Where would the proposed plant be located?

The proposed plant would be located next to



- Building a new 18-mile transmission line between Ligurta Substation and Arizona Public Service's North Gila Substation north of Yuma and interconnecting with the APS system

What other facilities would be needed?

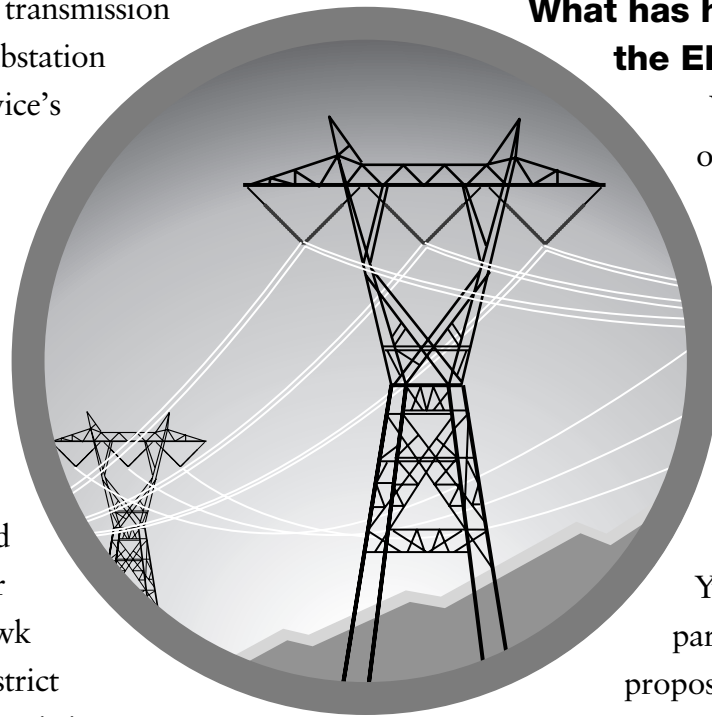
The facility would need water for cooling and other operations. Wellton-Mohawk Irrigation and Drainage District would supply water via the existing Wellton-Mohawk Canal.

A solar energy facility would convert thermal energy for use in inlet air cooling, making the new plant more fuel-efficient.

A new natural gas pipeline proposed by National Energy Gas Transmission, Inc. would supply natural gas for the facility. The pipeline would interconnect with a new or existing natural gas transmission line near U.S. Highway 95, northwest of the facility. The new line is proposed to parallel the existing Wellton-Mohawk Canal right-of-way for its full 12 miles.

Are other Federal agencies involved?

Yes. The Bureau of Land Management, Yuma Field Office, and Bureau of Reclamation, Yuma Area Office, are both cooperating with Western on the EIS preparation. The plant would occupy land currently managed by Reclamation. Along with private land, the transmission line upgrades and additions and the natural gas pipeline would also cross lands managed by Reclamation and BLM.



What has happened so far in the EIS process?

Western published a Notice of Intent to begin the EIS process in the May 19, 2003, Federal Register and accepted comments during a scoping period from May 19 to June 30. Scoping meetings held June 3 and 4 in Wellton and Yuma allowed interested parties to comment on the proposed project. The results are summarized in the EIS scoping

report, which is available from the contacts below or at <http://www.wapa.gov/interconn/>. In addition, the Arizona Corporation Commission granted a Certificate of Environmental Compatibility for the project on Aug. 13, 2003.

Western has also started consultations with several Native American tribes having ancestral, aboriginal or contemporary interests in the proposed project area. Using this input, Western is preparing a draft EIS.

How will Western address the issues listed in the scoping report during the rest of the EIS process?

In consultation with the cooperating agencies, Western will carefully examine public health and safety, environmental impacts and engineering aspects of the proposed facility, the proposed transmission system upgrades and facilities and the proposed natural gas pipeline. Even though Western, BLM or Reclamation decisions will influence only portions of the proposed facility

and its components, the EIS will address the entire proposed project.

Specific topics of interest that the EIS will address include:

- **Air quality.** What is the local and regional air quality, and would the project affect it?
- **Water resources.** How might the project affect surface and groundwater resources? How would facility operators reduce and manage wastes, including disposing of salt from the cooling towers?
- **Human health.** How might the plant affect the health of residents near the facility?
- **Accidents.** What kinds of accidents have occurred at other powerplants, and what are the emergency response and spill containment plans?
- **Biological resources.** What plant and animal species would the project affect? Would it affect specific special-status species?
- **Cultural resources.** Would the project harm archaeological and historical sites, artifacts and features? Would it affect areas of interest to Native American tribes?
- **Visual resources and aesthetics.** How would the facility affect viewpoints and cultural landscapes in the area?
- **Noise.** What noise already exists in the area, and how would the plant affect the noise level?
- **Hazardous materials and waste management.** How would plant operators handle and use chemicals, and how would they prevent and clean up spills?
- **Transportation.** How would the project affect traffic in the area, and how would construction and operating materials be transported?
- **Socioeconomics and environmental justice.** What is the current character of the community?

How would the project affect local services and labor markets? Disposition of the facility in the future. How would the facility be decommissioned at the end of its life?

What will happen next?

Western will announce the availability of the draft EIS in July. The announcement will invite interested parties to comment on the draft EIS. Western will also hold public hearings in late summer, and the final EIS should be available by late fall. Western plans to issue its Record of Decision after a 30-day waiting period following issuance of the final EIS.

Timeline

Notice of intent May 19, 2003
 Scoping period May 19 to June 30, 2003
 Scoping meetings June 3 and 4, 2003
 Notice of Availability
 for draft EIS July 2004
 Comment period Summer 2004
 Public hearings Late summer 2004
 Notice of Availability
 for final EIS Fall 2004
 Record of Decision Late fall 2004

How do I request a copy of the draft EIS or learn more about this project?

Call, write or e-mail:
 Mark Wieringa
 National Environmental Policy Act
 Document Manager
 Western Area Power Administration
 P.O. Box 281213
 Lakewood, CO 80228-8213
 Phone: 720-962-7448 or 1-800-336-7288
 Fax: 720-962-7263
 E-mail: wieringa@wapa.gov