

Appendix A Pre-scoping and Scoping Materials

THIS PAGE INTENTIONALLY LEFT BLANK

term of the proposed preliminary permit would be 36 months. The work proposed under the preliminary permit would include economic analysis, preparation of preliminary engineering plans, and a study of environmental impacts. Based on the results of these studies, the Applicant would decide whether to proceed with the preparation of a development application to construct and operate the project.

r. *Comments, Protests, or Motions to Intervene*: Anyone may submit comments, a protest, or a motion to intervene in accordance with the requirements of Rules of Practice and Procedure, 18 CFR 385.210, .211, .214. In determining the appropriate action to take, the Commission will consider all protests or other comments filed, but only those who file a motion to intervene in accordance with the Commission's Rules may become a party to the proceeding. Any comments, protests, or motions to intervene must be received on or before the specified comment date for the particular application.

Comments, protests and interventions may be filed electronically via the Internet in lieu of paper; See 18 CFR 385.2001 (a)(1)(iii) and the instructions on the Commission's Web site under "e-filing" link. The Commission strongly encourages electronic filing.

s. *Filing and Service of Responsive Documents*: Any filings must bear in all capital letter the title "COMMENTS", "RECOMMENDATIONS FOR TERMS AND CONDITIONS", "PROTEST", "MOTION TO INTERVENE", "NOTICE OF INTENT", or "COMPETING APPLICATION", as applicable, and the Project Number of the particular application to which the filing refers. Any of the above-named documents must be filed by providing the original and the number of copies provided by the Commission's regulations to: The Secretary, Federal Energy Regulatory Commission, 888 First Street, NE., Washington, DC 20426. A copy of any motion to intervene must also be served upon each representative of the Applicant specified in the particular application.

t. *Agency Comments*: Federal, state, and local agencies are invited to file comments on the described application. A copy of the application may be obtained by agencies directly from the applicant. If an agency does not file comments within the time specified for filing comments, it will be presumed to have no comments. One copy of an

agency's comments must also be sent to the Applicant's representatives.

Magalie R. Salas,
Secretary.

[FR Doc. E6-12388 Filed 8-1-06; 8:45 am]

BILLING CODE 6717-01-P

DEPARTMENT OF ENERGY

Western Area Power Administration

Eastern Plains Transmission Project, Colorado and Kansas

AGENCY: Western Area Power Administration, DOE.

ACTION: Notice of intent to prepare an environmental impact statement; floodplain and wetlands involvement; and public scoping meetings.

SUMMARY: The U.S. Department of Energy (DOE), Western Area Power Administration (Western) intends to prepare an environmental impact statement (EIS) for its proposal to participate with Tri-State Generation and Transmission Association, Inc. (Tri-State), to construct the proposed Eastern Plains Transmission Project (Project). Western's participation with Tri-State would be in exchange for capacity rights on the transmission lines. These rights would provide Western with approximately 275 megawatts (MW) of capacity on the proposed transmission system. Western needs this additional transmission capacity to provide more economical, reliable, diverse, and flexible power delivery to its customers. The EIS will address the construction, operation, and maintenance of approximately 1,000 miles of high-voltage transmission lines and ancillary facilities. In addition, the EIS will address expansions of existing substations and construction of new substations, access roads, and fiber optic communication facilities.

The EIS will be prepared in accordance with the National Environmental Policy Act (NEPA) and DOE NEPA Implementing Procedures. Because the Project could involve action in a floodplain, the EIS will address floodplain and wetlands impacts under DOE regulations for compliance with floodplain and wetlands environmental review.

DATES: See **SUPPLEMENTARY INFORMATION** section for meeting dates and locations. The public scoping period will close September 30, 2006.

ADDRESSES: Written comments, questions, and information on the scope of the Project may be mailed, faxed, or e-mailed to Mr. Jim Hartman, Environmental Manager, Western Area

Power Administration, Rocky Mountain Region, P.O. Box 3700, Loveland, CO 80539; fax (970) 461-7213; or e-mail eptp@wapa.gov. Project and contact information will also be updated regularly on the Project Internet site at <http://www.wapa.gov/transmission/eptp.htm>.

FOR FURTHER INFORMATION CONTACT: For further information or to request copies of the EIS, contact Mr. Hartman at the addresses provided or telephone the Project hotline toll-free at (888) 826-4710. For general information on DOE's NEPA review procedures or the status of a NEPA review, contact Ms. Carol M. Borgstrom, Director, Office of NEPA Policy and Compliance (EH-42), U.S. Department of Energy, 1000 Independence Avenue, SW., Washington, DC 20585-0119; telephone (202) 586-4600 or (800) 472-2756; or fax (202) 586-7031.

SUPPLEMENTARY INFORMATION:

Background and Need for Agency Action

Western, as an agency within DOE, markets Federal hydro-electric power to preference customers, as specified by law. They include municipalities, cooperatives, public utility and irrigation districts, Federal and state agencies, and Native American tribes in 15 Western states, including Colorado and Kansas. Western currently lacks adequate transmission capability in southeastern Colorado to serve its customers directly. Western needs additional transmission system capacity to provide more economical, reliable, diverse, and flexible power delivery to its customers. The Project would provide Western with improved access to alternative resources and suppliers by expanding the capacity and geographic reach of the transmission system. It would increase Western's options for purchasing energy to meet contractual requirements. Enhancing and expanding transmission pathways would contribute to ensuring reliability of the Federal transmission system.

Tri-State is a wholesale electric power supplier, owned by the 44 electric cooperatives it serves. Tri-State and the member utilities serve customers throughout Colorado, Nebraska, New Mexico, and Wyoming. Tri-State's board of directors approved a resource development plan, which includes generation in Kansas and Colorado and construction of a transmission system to deliver the generation to customers. The transmission portion of Tri-State's resource plan presents an opportunity for Western to obtain transmission capacity to meet Western's needs.

Western will prepare the EIS according to NEPA requirements, including the Council on Environmental Quality's NEPA Implementing Regulations under 40 CFR parts 1500–1508 and DOE's NEPA Implementing Procedures under 10 CFR part 1021. Because the Project could involve construction activities in floodplains and wetlands, the EIS will include floodplain and wetland assessments and a statement of findings, following DOE regulations for compliance with floodplain and wetlands environmental review under 10 CFR part 1022.

Proposed Action and Alternatives

Western's proposed Project activities include construction planning and management for approximately 1,000 miles of high voltage transmission lines, and acquiring rights-of-way for transmission lines, access roads, and other facilities. In addition to the transmission lines and access roads, the Project includes four new substations; expansions of approximately eight existing substations; and installing a fiber optic communications system for the transmission lines.

Preliminary locations of transmission line corridors and new substations have been identified and will be presented at the public scoping meetings. The EIS will evaluate the effects of constructing, operating, and maintaining approximately 750 miles of 500-kilovolt (kV) transmission lines and approximately 250 miles of 230- or 345-kV transmission lines; constructing four new substations; expanding eight existing substations; installing a fiber-optic communication system for the transmission lines; and constructing and maintaining associated access roads. The Project study area includes part or all of the following counties in Colorado: Adams, Arapahoe, Bent, Cheyenne, Crowley, Elbert, El Paso, Kiowa, Kit Carson, Lincoln, Morgan, Otero, Prowers, Pueblo, Washington, and Yuma; and in Kansas: Finney, Greeley, Hamilton, Kearny, Logan, Scott, Sherman, Thomas, Wallace, and Wichita.

Among the alternatives Western will address in the EIS is the no action alternative. Under the no action alternative, Western would not participate in the Project. The EIS will evaluate the environmental effects of constructing, operating, and maintaining the Project and compare them to existing conditions. Alternative transmission line routes and substation locations will be refined as part of the EIS scoping process and addressed in the EIS. Western will consider additional reasonable alternatives

resulting from the scoping process. Reasonable alternatives would need to meet Western's purpose and need and be technically and economically viable.

Connected and Cumulative Actions

Western will evaluate connected and cumulative actions in the EIS. Connected actions are defined under 40 CFR 1508.25(a)(1) as, “* * * closely related * * * [that] (i) Automatically trigger other actions which may require environmental impact statements; (ii) Cannot or will not proceed unless other actions are taken previously or simultaneously; [or] (iii) Are interdependent parts of a larger action and depend on the larger action for their justification.” Western has determined that connected actions for the Project include activities associated with the construction, maintenance, and operation of the proposed transmission line and ancillary facilities, including eight substation expansions, four new substations, associated access roads, and fiber optic communications facilities.

Cumulative actions are defined in 40 CFR 1508.25(a)(2) as those, “* * * which when viewed with other proposed actions have cumulatively significant impacts. * * *” Western has determined that cumulative actions for the Project include Tri-State's proposed generation projects as well as other past, present, and reasonably foreseeable projects.

Identification of Environmental Issues

Western invites interested agencies, Tribes, organizations, and members of the public to submit comments or suggestions to assist in identifying the appropriate scope of the EIS. The following list of potential environmental issues has preliminarily been identified for inclusion in the EIS. This list is designed to help the public frame its comments:

1. Effects on protected, threatened, endangered, or sensitive species of animals or plants; or their critical habitats;
2. Effects on other biological resources;
3. Effects on land use, recreation, and transportation;
4. Effects on floodplains and wetlands;
5. Effects on cultural or historic resources and Tribal values;
6. Effects on human health and safety (including military, civilian, and agricultural aviation safety);
7. Effects on air, soil, and water resources;
8. Effects on agricultural operations;
9. Effects on visual resources; and
10. Effects on socioeconomic resources and disproportionately high

and adverse impacts on minority and low-income groups.

This list is not intended to be all-inclusive or to imply predetermination of impacts. Western invites interested parties to suggest specific issues within these general categories or other issues not included above for consideration in the EIS.

Scoping Process

With this Notice of Intent, Western invites public participation in the EIS scoping process and solicits public comments to help establish the scope and content of the EIS. Scoping will allow Western to obtain information that will refine the preliminary Project alternatives; identify environmental issues to be considered in the EIS; and help eliminate, from detailed study, those alternatives and issues that are not feasible or relevant. To be assured consideration, all comments on the scope of the EIS must be received by the end of the scoping period.

Meetings

The dates and meeting locations are:

1. August 28, 2006, Carroll Building, 418 Edison Street, Brush, CO 80723.
2. August 29, 2006, City Hall, Community Room, 245 W. 4th Street, Wray, CO 80758.
3. August 30, 2006, Limon Community Building, North Room, 477 D Avenue, Limon, CO 80828.
4. August 31, 2006, Holiday Inn-Denver International Airport, Breckenridge Ballroom, 15500 East 40th Avenue, Aurora, CO 80239.
5. September 5, 2006, Lorraine High School/Community Center, 301 E. Iowa Avenue, Fountain, CO 80817.
6. September 6, 2006, Pueblo Convention Center, Fortino Grand Hall C–West, 320 Central Main Street, Pueblo, CO 81003.
7. September 11, 2006, Burlington Education and Community Center, 420 S. 14th Street, Old Town, Burlington, CO 80807.
8. September 12, 2006, Community Activity Building (CAB Building), Wallace County Fairgrounds, Sharon Springs, KS 67758.
9. September 13, 2006, Lamar Community Building, Multi-Purpose Room, 610 South 6th Street, Lamar, CO 81052.
10. September 14, 2006, Veteran's Memorial Building, 207 North Main Street, Lakin, KS 67860.

The time for each scoping meeting is 3 to 8 p.m. The meetings will be in an informal, “open house” format. No formal presentations are planned for the scoping meetings. The meetings are designed to provide interested parties

the opportunity to receive information on the Project and the NEPA process, ask questions, and provide input and feedback through written and oral comments. All meeting locations are wheelchair accessible. Any individual needing special accommodations should contact Mr. Hartman.

Participation in the NEPA Process

Western invites interested Tribes and Federal, state, and local agencies with jurisdiction or special expertise to be cooperating agencies on the EIS. Request to be a cooperating agency by contacting Mr. Hartman. Designated cooperating agencies have certain responsibilities to support the NEPA process, as specified under 40 CFR 1501.6(b).

Persons interested in receiving future notices, project information, copies of the EIS, and other information on the NEPA review process should contact Mr. Hartman. The EIS (choice of summary or full document) will be available in printed and electronic (compact disc) formats.

Western anticipates the Draft EIS will be available summer 2007, with a Final EIS available spring 2008. A Record of Decision is expected to be issued spring 2008. The public will be provided opportunities to review progress on the identification of transmission line corridors and routes during public workshops, which will be scheduled after public scoping and prior to preparation of the Draft EIS. The location of additional public meetings and hearings will be provided in the **Federal Register** and/or to local media at a later date.

Dated: July 21, 2006.

Michael S. HacsKaylo,
Administrator.

[FR Doc. E6-12426 Filed 8-1-06; 8:45 am]

BILLING CODE 6450-01-P

ENVIRONMENTAL PROTECTION AGENCY

[EPA-HQ-RCRA-2006-0624, FRL-8205-3]

Agency Information Collection Activities: Proposed Collection; Comment Request; Land Disposal Restrictions No-Migration Variances, EPA ICR Number 1353.08, OMB Control Number 2050-0062

AGENCY: Environmental Protection Agency (EPA).

ACTION: Notice.

SUMMARY: In compliance with the Paperwork Reduction Act (44 U.S.C. 3501 *et seq.*), this document announces

that EPA is planning to submit a continuing Information Collection Request (ICR) to the Office of Management and Budget (OMB). This is a request for an existing approved collection. This ICR is scheduled to expire on December 31, 2006. Before submitting the ICR to OMB for review and approval, EPA is soliciting comments on specific aspects of the proposed information collection as described below.

DATES: Comments must be submitted on or before October 2, 2006.

ADDRESSES: Submit your comments, referencing docket ID number EPA-HQ-RCRA-2006-0624, by one of the following methods:

- <http://www.regulations.gov>: Follow the on-line instructions for submitting comments.
- *E-mail:* rcra-docket@epa.gov.
- *Mail:* RCRA Docket (5305T), U.S. Environmental Protection Agency, 1200 Pennsylvania Avenue, NW., Washington, DC 20460.

• *Hand Delivery:* See NOTE below. Such deliveries are only accepted during the Docket's normal hours of operation, and special arrangements should be made for deliveries of boxed information.

Instructions: Direct your comments to Docket ID No. EPA-HQ-RCRA-2006-0624. EPA's policy is that all comments received will be included in the public docket without change and may be made available online at www.regulations.gov, including any personal information provided, unless the comment includes information claimed to be Confidential Business Information (CBI) or other information whose disclosure is restricted by statute. Do not submit information that you consider to be CBI or otherwise protected through www.regulations.gov or e-mail. The www.regulations.gov Web site is an "anonymous access" system, which means EPA will not know your identity or contact information unless you provide it in the body of your comment. If you send an e-mail comment directly to EPA without going through www.regulations.gov your e-mail address will be automatically captured and included as part of the comment that is placed in the public docket and made available on the Internet. If you submit an electronic comment, EPA recommends that you include your name and other contact information in the body of your comment and with any disk or CD-ROM you submit. If EPA cannot read your comment due to technical difficulties and cannot contact you for clarification, EPA may not be able to consider your

comment. Electronic files should avoid the use of special characters, any form of encryption, and be free of any defects or viruses. For additional information about EPA's public docket visit the EPA Docket Center homepage at <http://www.epa.gov/epahome/dockets.htm>.

Note: The EPA Docket Center suffered damage due to flooding during the last week of June 2006. The Docket Center is continuing to operate. However, during the cleanup, there will be temporary changes to Docket Center telephone numbers, addresses, and hours of operation for people who wish to make hand deliveries or visit the Public Reading Room to view documents. Consult EPA's **Federal Register** notice at 71 FR 38147 (July 5, 2006) or the EPA Web site at <http://www.epa.gov/epahome/dockets.htm> for current information on docket operations, locations and telephone numbers. The Docket Center's mailing address for U.S. mail and the procedure for submitting comments to www.regulations.gov are not affected by the flooding and will remain the same.

FOR FURTHER INFORMATION CONTACT:

Peggy Vyas, Mail Code 5302W, Environmental Protection Agency, 1200 Pennsylvania Ave., NW., Washington, DC 20460; telephone number: 703-308-5477; fax number: 703-308-8433; e-mail address: vyas.peggy@epa.gov.

SUPPLEMENTARY INFORMATION:

How Can I Access the Docket and/or Submit Comments?

EPA has established a public docket for this ICR under Docket ID No. EPA-HQ-RCRA-2006-0624, which is available for online viewing at www.regulations.gov, or in person viewing at the RCRA Docket in the EPA Docket Center. See note at end of **ADDRESSES** section. The EPA/DC Public Reading Room is open from 8 a.m. to 4:30 p.m., Monday through Friday, excluding legal holidays. The telephone number for the Reading Room is 202-566-1744, and the telephone number for RCRA Docket is 202-566-0270.

Use www.regulations.gov to obtain a copy of the draft collection of information, submit or view public comments, access the index listing of the contents of the docket, and to access those documents in the public docket that are available electronically. Once in the system, select "search," then key in the docket ID number identified in this document.

What Information Is EPA Particularly Interested in?

Pursuant to section 3506(c)(2)(A) of the PRA, EPA specifically solicits comments and information to enable it to:

- (i) Evaluate whether the proposed collection of information is necessary

THIS PAGE INTENTIONALLY LEFT BLANK

FOR IMMEDIATE RELEASE: August 21, 2006

CONTACT: Randy Wilkerson, 720-962-7056, wilkerson@wapa.gov

PUBLIC OPEN HOUSE MEETINGS SET FOR EASTERN PLAINS TRANSMISSION PROJECT

LAKEWOOD, Colo.— Public scoping meetings on proposed high-voltage transmission lines and substations in eastern Colorado and western Kansas are set for 10 communities near the project between Aug. 28 and Sept. 14.

The open house meetings are part of Western Area Power Administration's efforts to share information and receive public comments on the scope of issues it will evaluate in the Eastern Plains Transmission Project Environmental Impact Statement.

The open-house meetings to share information and answer questions will be held from 3 to 8 p.m.:

- Aug. 28, **Brush, Colo.**, Carroll Building, 418 Edison Street
- Aug. 29, **Wray, Colo.**, City Hall, Community Room, 245 W. 4th Street
- Aug. 30, **Limon, Colo.**, Limon Community Building, North Room, 477 D Avenue
- Aug. 31, **Aurora, Colo.**, Holiday Inn—Denver International Airport, Breckenridge Ballroom, 15500 East 40th Avenue
- Sept. 5, **Fountain, Colo.**, Lorraine High School/Community Center, 301 E. Iowa Avenue
- Sept. 6, **Pueblo, Colo.**, Pueblo Convention Center, Fortino Grand Hall C-West, 320 Central Main Street
- Sept. 11, **Burlington, Colo.**, Burlington Education and Community Center, 420 S. 14th Street, Old Town
- Sept. 12, **Sharon Springs, Kan.**, Community Activity Building, "CAB" Building, Wallace County Fairgrounds
- Sept. 13, **Lamar, Colo.**, Lamar Community Building, Multi-Purpose Room, 610 South 6th Street
- Sept. 14, **Lakin, Kan.**, Veteran's Memorial Building, 207 North Main Street

-more-

EASTERN PLAINS TRANSMISSION PROJECT OPEN HOUSE 2-2-2

All meeting locations are wheelchair accessible. Please contact Western if you need other accommodations to attend the scoping meetings.

Western proposes to participate in the Eastern Plains project with Tri-State Generation and Transmission Association, Inc., in exchange for capacity rights on the transmission lines. These rights would provide Western with approximately 275 megawatts of system capacity on the proposed transmission system. Western needs this additional transmission system capacity to provide more economical, reliable, diverse and flexible power delivery to customers.

The EIS will address construction, operation and maintenance of about 1,000 miles of high-voltage transmission lines and related facilities, expansions at existing substations and construction of new substations, access roads and fiber optic communication facilities. The EIS will also address floodplain and wetland impacts.

The analysis area includes Adams, Arapahoe, Bent, Cheyenne, Crowley, Elbert, El Paso, Kiowa, Kit Carson, Lincoln, Morgan, Otero, Pueblo, Prowers, Washington and Yuma counties in Colorado and Finney, Greeley, Hamilton, Kearny, Logan, Scott, Sherman, Thomas, Wallace and Wichita counties in Kansas.

Comments on the proposed project can be submitted at one of the meetings or to Jim Hartman, Environmental Manager, Western Area Power Administration, Rocky Mountain Region, P.O. Box 3700, Loveland, CO 80539; fax 970-461-7213; or e-mail eptp@wapa.gov. Comments are due by Sept. 30.

Western invites the public to suggest specific issues and concerns that should be evaluated in the EIS. Western will use the scoping process to help identify alternatives to the proposed action. Western will also analyze the impacts of not participating in the proposed project.

For more information about the proposed project, please visit the project Web site online at: <http://www.wapa.gov/transmission/eptp.htm>.

EIS timeline

Public scoping— August/September 2006

- Public provides issues and comments on EIS scope

Route refinement—Winter 2006/07

- Public review and comment on refined routes

Draft EIS published—Summer 2007

- Public review and comment

Final EIS published—Winter 2007/08

- Public review and comment

Record of decision published— 1st quarter 2008

- Public notified of decision

EIS to address connected, cumulative actions

In the EIS, Western will evaluate the impacts from connected and cumulative actions. Connected actions are closely related to the proposed action because they may trigger other actions that may require an environmental impact statement; could not proceed without other actions occurring either before or at the same time; or depend on a larger action for their justification.

Western has determined that the actions connected to Western's proposal to participate in the EPTP include activities associated with constructing, maintaining and operating the proposed transmission lines and ancillary facilities, including expanding existing substations, constructing new substations; constructing access roads; and installing fiber optic communication facilities.

Cumulative actions are actions that, when viewed along with the proposed actions, have cumulatively significant impacts. Western has determined that cumulative actions for the proposal to participate in the Project include Tri-State's proposed generation projects and other past, present and reasonably foreseeable projects.

How you can learn more

For more information about the proposed project, visit the project Web site online at <http://www.wapa.gov/transmission/eptp.htm>. If you have question, comments, concerns or would like more information, send an e-mail to us at eptp@wapa.gov, or call the toll-free EPTP hotline, 1-888-826-4710.

Comment on the project

Comments on the proposed project can be submitted at one of the meetings or to:

Jim Hartman, Environmental Manager
Western Area Power Administration
Rocky Mountain Region
P.O. Box 3700, Loveland, CO 80539
fax 970-461-7213; or
e-mail eptp@wapa.gov

Scoping comments should be provided by Sept. 30 to be considered in defining the scope for the EIS. Western will consider all public comments provided during the entire EIS process.

About Western

Western Area Power Administration markets and delivers reliable, cost-based hydroelectric power and related services to cities and towns, cooperatives, irrigation districts and Native American tribes in 15 Western states, including Colorado and Kansas. Western is one of four power marketing administrations within the U.S. Department of Energy whose role is to market and transmit electricity from Federally owned and operated multi-use water projects.

About Tri-State

Tri-State Generation and Transmission Association is a wholesale electric power supplier owned by the 44 electric cooperatives that it serves. Tri-State generates and transports electricity to its member systems throughout a 250,000 square-mile service territory across Colorado, Nebraska, New Mexico and Wyoming.



Eastern Plains TRANSMISSION PROJECT

AUGUST 2006

Scoping meetings set for Eastern Plains Transmission Project

Scoping meetings on proposed transmission facilities in eastern Colorado and western Kansas are set for 10 communities near the project between Aug. 28 and Sept. 14.

Western Area Power Administration seeks public comments on the proposed project. You are invited to identify issues and alternatives to evaluate for environmental impacts in the Eastern Plains Transmission Project Environmental Impact Statement.

The scoping meetings will be structured as informal open houses. They will provide interested parties the opportunity to view proposed project and EIS process information, ask questions and make comments. Preliminary locations of transmission line corridors and new substations have been identified and will be presented. Western representatives will be available to answer questions and provide additional information.

When and where will scoping meetings be held?

Open-house meetings from 3 to 8 p.m., will be held across the eastern plains to share information about the proposed project and answer questions. Meetings are planned for:

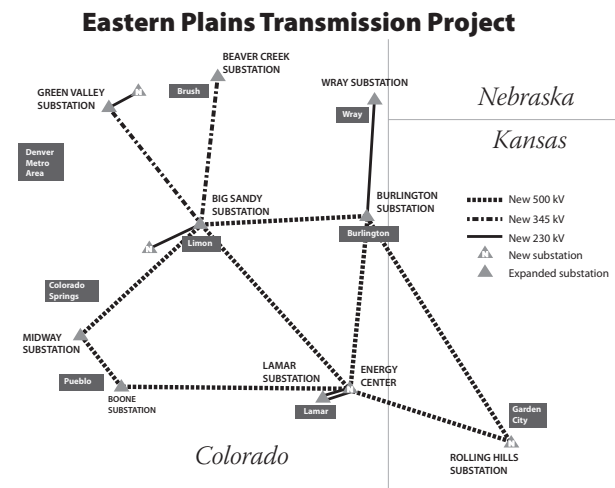
- **Aug. 28, Brush, Colo.,** Carroll Building, 418 Edison Street
- **Aug. 29, Wray, Colo.,** City Hall, Community Room, 245 W. 4th Street
- **Aug. 30, Limon, Colo.,** Limon Community Building, North Room, 477 D Avenue
- **Aug. 31, Aurora, Colo.,** Holiday Inn—Denver International Airport, Breckenridge Ballroom, 15500 East 40th Avenue
- **Sept. 5, Fountain, Colo.,** Lorraine High School/Community Center, 301 E. Iowa Avenue
- **Sept. 6, Pueblo, Colo.,** Pueblo Convention Center, Fortino Grand Hall C-West, 320 Central Main Street
- **Sept. 11, Burlington, Colo.,** Burlington Education and Community Center, 420 S. 14th Street, Old Town
- **Sept. 12, Sharon Springs, Kan.,** Community Activity Building, "CAB" Building, Wallace County Fairgrounds
- **Sept. 13, Lamar, Colo.,** Lamar Community Building, Multi-Purpose Room, 610 South 6th Street
- **Sept. 14, Lakin, Kan.,** Veteran's Memorial Building, 207 North Main Street

All meeting locations are wheelchair accessible. Please contact Western if you need other accommodations to attend the scoping meetings.

EPTP would provide significant additions to high-voltage transmission system

The Eastern Plains Transmission Project is a proposed new transmission project that would include about 1,000 miles of high-voltage transmission lines and related facilities in eastern Colorado and western Kansas, expanding existing substations and constructing new substations, constructing access roads and installing fiber optic communication facilities. As currently planned, the EPTP would be one of the largest transmission additions in the United States in the past five years.

Western proposes to participate in the construction of the Eastern Plains project with Tri-State Generation and Transmission Association, Inc., in exchange for capacity rights on the transmission lines. These rights would provide Western with approximately 275 megawatts of capacity on the proposed transmission system. Western needs this additional transmission



system capacity to provide more economical, reliable, diverse and flexible power delivery to its customers.

Tri-State is a wholesale electric power supplier owned by the 44 electric cooperatives that it serves. Tri-State generates and transports electricity to its member systems throughout a 250,000 square-mile service territory across Colorado, Nebraska, New Mexico and Wyoming. Tri-

State's board of directors approved a comprehensive resource development plan that includes generation in western Kansas and eastern Colorado, and construction of a transmission system to deliver the generation to customers. The transmission portion of Tri-State's resource plan presents an opportunity for Western to obtain transmission capacity to meet Western's needs.

For more information about the proposed project, please visit the project Web site online at: <http://www.wapa.gov/transmission/eptp.htm>.

Public comments sought for environmental analysis

The EIS will address construction, operation and maintenance of about 1,000 miles of high-voltage transmission lines and related facilities, expansions at existing substations and construction of new substations, access roads and fiber optic communication facilities.

The analysis area includes Adams, Arapahoe, Bent, Cheyenne, Crowley, Elbert, El Paso, Kiowa, Kit Carson, Lincoln, Morgan, Otero, Pueblo, Prowers, Washington and Yuma counties in Colorado and Finney, Greeley, Hamilton, Kearny, Logan, Scott, Sherman, Thomas, Wallace and Wichita counties in Kansas.

Potential environmental issues already identified for analysis include impacts on:

- Protected, threatened, endangered or sensitive species of plants or animals or their critical habitats
- Other biological resources
- Land use, including agricultural operations,

- recreation and transportation
- Floodplains and wetlands
- Cultural or historic resources and tribal values
- Human health and safety
- Air, soil and water resources (including air quality and surface and ground water)
- Visual resources
- Populations based on socioeconomic and minority or low-income status

This list is not all-inclusive. Western invites you to suggest specific issue and concerns within these general categories or to suggest other issues that should be evaluated in the EIS. Western will use the scoping process to explore and refine any reasonable alternatives to the proposed route. Western will also analyze the impacts of not participating in the proposed project.

What is the National Environmental Policy Act?

NEPA is a Federal law that serves as the nation's basic charter for environmental protection. NEPA requires that all Federal agencies consider the potential environmental impacts of their proposed actions.

NEPA promotes better agency decision making by ensuring that high quality environmental information is available to agency officials and the public before the agency decides whether and how to undertake a major Federal action. Through the NEPA process, you have an opportunity to learn about an agency's proposed

actions and to provide information and comments to the agency. To implement NEPA, all Federal agencies follow procedures issued by the President's Council on Environmental Quality.

For major Federal actions that may significantly affect the quality of the human environment, NEPA requires an environmental impact statement be prepared. An EIS provides a detailed analysis of the potential environmental impacts of a proposed action and the range of reasonable alternatives. Western will prepare an EIS for the Eastern Plains Transmission Project.

How you can be involved in the EIS process

An environmental impact statement process consists of several steps, each with opportunities for you to be involved.

First, Western publishes a Notice of Intent to Prepare an EIS in the *Federal Register* and makes local announcements, including this newsletter and notices in local newspapers. The formal Notice of Intent states the need for the action and provides preliminary information on the EIS scope, including the alternative actions to be evaluated and the kinds of potential environmental impacts to be analyzed. You'll find this notice and other project information on Western's Web site at <http://wapa.gov/transmission/eptp.htm>.

Western has decided to prepare an Environmental Impact Statement and once its Notice of Intent to prepare an EIS is published in the *Federal Register*, scoping begins. During the scoping process—now through Sept. 30—Western requests your comments on the scope of the EIS, such as what alternatives should be evaluated and what potential environmental impacts should be analyzed.

Information gained during scoping assists Western in identifying potential environmental issues, alternatives and mitigation measures associated with development of the proposed project. The process provides a mechanism for narrowing the scope of issues so the EIS can focus the analysis on areas of high interest and concern. Public participation in the scoping process is a vital component to preparing a sound EIS. The scoping process provides the public and agencies opportunities for meaningful involvement in the decision-making process.

Following the scoping process, Western will consider scoping comments as it refines the proposed routes for the EPTP to analyze in a Draft Environmental Impact Statement. Western will host a series of meetings late

this year to provide you an opportunity to review and comment on the refined routes. Based on comments received at this stage the routes may be further refined and used to prepare a Draft EIS. The Draft EIS reports on the analysis and comparisons of potential environmental impacts of the various routing alternatives, including a "no action" alternative. The EIS also reports on ways to avoid or reduce adverse impacts. The Draft EIS will identify Western's preferred alternative for the proposed project.

After Western issues a Draft EIS, planned for Summer 2007, the availability of the Draft EIS will be announced in the *Federal Register*, a subsequent newsletter, and notices in local newspapers. Copies of the Draft EIS will be provided upon request. Western plans to give you at least 45 days to review the Draft EIS and provide comments. Public hearings will be held during the 45-day public comment period. Western's newsletter and local notices will announce details on how you may comment on the Draft EIS.

Western will consider all substantive comments as it prepares a Final EIS. All comments received will be considered by Western before making a decision. Western plans to issue the Final EIS in Winter 2007/08. Once issued, the availability of the Final EIS will be published in the *Federal Register* a subsequent newsletter and local newspapers. Copies of the Final EIS will be provided to all commenters and parties requesting it. Western must wait at least 30 days after the notice announcing the availability of the Final EIS before issuing a Record of Decision. The Record of Decision will explain Western's decision on whether to participate in the construction of the Eastern Plains Transmission Project. The Record of Decision, expected in the first quarter 2008, would also describe any commitments to avoid or reduce potential environmental impacts.

CLASS BEGINS

New program aims to increase supply of electric co-op linemen

For 15 students at Western Nebraska Community College in the small city of Alliance, Nebraska, back-to-school will mean books, paper, pens ... and transformers.

The college kicked off a new degree program last spring dedicated to increasing the availability of electric line workers in rural Colorado, Nebraska and Wyoming.



"There's a real need for qualified people," said Larry Wisecup, training coordinator for Tri-State Generation and Transmission Association in Westminster, and a member of the school advisory panel. "It costs a lot of money to train a lineman on the job. So many places are requiring certification before they will consider hiring someone."

Providing more opportunity to earn that certification close to home is one way to make sure that Colorado's electric co-ops have trained linemen to hire. There is no similar coursework available in a 300-mile circle around Alliance, with the closest program being the electric line worker program at Mesa State College in Grand Junction.

The additional program in Nebraska will help Colorado's co-ops by training more people from the region who want to go to school without going so far from home. These trained line workers will then be ready when a job opens close to home.

"We were getting somebody from, say, eastern Montana, and when (a job) opened up at the co-op (in Montana), they'd go back," said one local co-op manager. There is hope that that trend will stop with more training just east of Colorado's border.

information taken from article by Steven Johnson in Electric Co-op Today

Public Invited to Comment on New Transmission Lines at Meeting

Scoping meetings on proposed transmission facilities in eastern Colorado and western Kansas are set for 10 communities across the eastern plains between August 28 and September 14.

The open house meetings to share information and answer questions will be held at the following locations and dates:

- August 28 — Brush, Carroll Building
- August 29 — Wray, City Hall
- August 30 — Limon, Community Building
- August 31 — Aurora, Holiday Inn DIA
- September 5 — Fountain, Lorraine High School
- September 6 — Pueblo, Convention Center
- September 11 — Burlington, Community Center
- September 12 — Sharon Springs, Kansas, CAB Building
- September 13 — Lamar, Community Building
- September 14 — Lakin, Kansas, Veteran's Building

Western Area Power Administration seeks public comments on issues

and concerns to be evaluated in the Eastern Plains Transmission Project environmental impact statement. WAPA will use information developed from the scoping process to help evaluate alternatives to the proposed action.

WAPA proposes to participate in the Eastern Plains Project with Tri-State Generation and Transmission Association, Inc., in exchange for capacity rights on the transmission lines. Comments on the proposed project may be submitted at one of the meetings or to Jim Hartman, environmental manager at Western Area Power Administration, Rocky Mountain Region, P.O. Box 3700, Loveland, CO 80539. You can also fax your comments to 970-461-7213 or email eptp@wapa.gov. Comments must be received by September 30.

For more information about the proposed project, visit the project website at www.wapa.gov/transmission/eptp.htm.

Co-op Green Power

More than 550 rural electric systems offer Green Power

NRECA Strategic Analysis Unit
July 2006

National Rural Electric Cooperative Association

The National Rural Electric Cooperative Association's Strategic Analysis Unit has released this updated map, which highlights electric co-op service areas where consumers have access to green power. The map was assembled from a variety of information sources, including NRECA surveys, NREL, TVA, Green Power EMC, and NC Green Power.

THIS PAGE INTENTIONALLY LEFT BLANK

Scoping meetings set for Eastern Plains Transmission Project

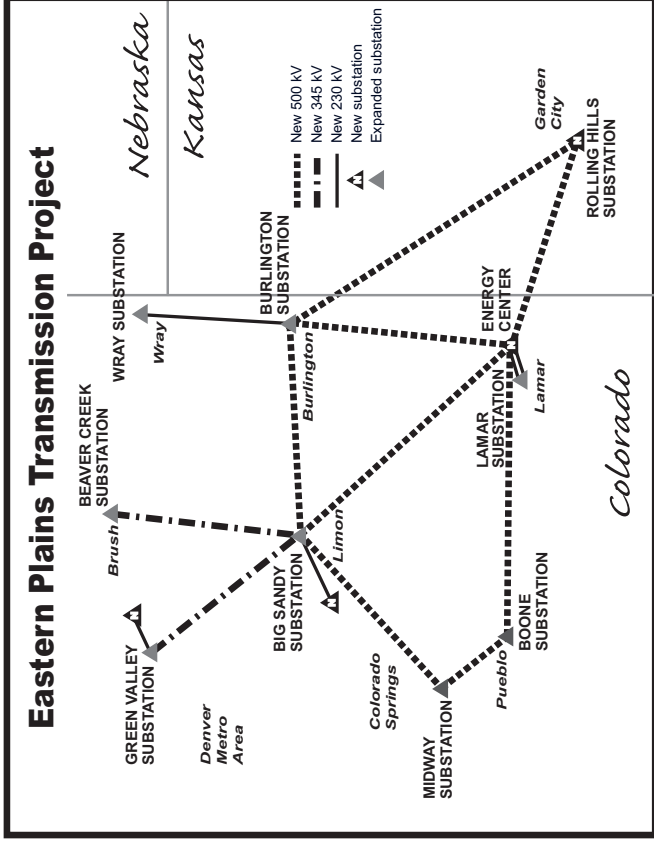
Scoping meetings on proposed transmission facilities in eastern Colorado and western Kansas are set for 10 communities across the eastern plains between Aug. 28 and Sept. 14.

Western Area Power Administration seeks public comments on issues and alternatives to evaluate for environmental impacts in the Eastern Plains Transmission Project Environmental Impact Statement. Western proposes to participate in the Eastern Plains project with Tri-State Generation and Transmission Association, Inc., in exchange for

capacity rights on the transmission lines.

Preliminary locations of transmission line corridors and new substations have been identified and will be presented at the public scoping meetings. The EIS will evaluate the effects of constructing, operating and maintaining approximately 750 miles of 500-kV transmission

(continued on reverse)



lines and approximately 250 miles of 230- or 345-kV transmission line; constructing four new substations; expanding eight existing substations; installing a fiber-optic communication system for the transmission lines; and constructing and maintaining associated access roads.

The Project study area includes part or all of the following counties in Colorado: Adams, Arapahoe, Bent, Cheyenne, Crowley, Elbert, El Paso, Kiowa, Kit Carson, Lincoln, Morgan, Otero, Prowers, Pueblo, Washington and Yuma; and in Kansas: Finney, Greeley, Hamilton, Kearny, Logan, Scott, Sherman, Thomas, Wallace and Wichita.

Comments on the proposed project can be submitted at one of the meetings or to Jim Hartman, Environmental Manager, Western Area Power Administration, Rocky Mountain Region, P.O. Box 3700, Loveland, CO 80539; fax 970-461-7213; or e-mail eptp@wapa.gov. Comments must be received by Sept. 30, 2006.

Open-house meetings from 3 to 8 p.m., will be held across the Eastern Plains to share information about the proposed project and answer questions. Meetings are planned for:

- **Aug. 28, Brush, Colo.** - Carroll Building, 418 Edison Street
- **Aug. 29, Wray, Colo.** - City Hall, Community Room, 245 W. 4th Street
- **Aug. 30, Limon, Colo.** - Limon Community Building, North Room, 477 D Avenue
- **Aug. 31, Aurora, Colo.** - Holiday Inn-Denver International Airport, Breckenridge Ballroom, 15500 East 40th Avenue

Western invites you to suggest specific issues and concerns to be evaluated in the EIS. Western will use information developed from the scoping process to help evaluate alternatives to the

- **Sept. 5, Fountain, Colo.** - Lorraine High School/Community Center, 301 E. Iowa Avenue
- **Sept. 6, Pueblo, Colo.** - Pueblo Convention Center, Fortino Grand Hall C-West, 320 Central Main Street
- **Sept. 11, Burlington, Colo.** - Burlington Education and Community Center, 420 S. 14th Street, Old Town
- **Sept. 12, Sharon Springs, Kan.** - Community Activity Building (CAB Building), Wallace County Fairgrounds
- **Sept. 13, Lamar, Colo.** - Lamar Community Building, Multi-Purpose Room, 610 South 6th Street
- **Sept. 14, Lakin, Kan.** - Veteran's Memorial Building, 207 North Main Street

proposed action.

For more information about the proposed project, visit the project Web site online at <http://www.wapa.gov/transmission/eptp.htm>.

THIS PAGE INTENTIONALLY LEFT BLANK

POWERING the WEST

A publication of TRI-STATE GENERATION AND TRANSMISSION ASSOCIATION, INC.

Summer 2006

Resource plan moves forward

Significant progress made in year since Tri-State board approved new resources

One year after Tri-State Generation and Transmission Association's board of directors authorized a comprehensive resource development plan, the association is making significant progress to develop new long-term, reliable and cost-efficient sources of power for its member electric cooperatives.

In August 2005, Tri-State's board of directors, representing the association's 44 member co-ops, approved the development and construction of two coal-based generation units in western Kansas, a coal-based unit in southeastern Colorado and a transmission network to deliver power to member distribution systems.

"We've made great strides in the past year," said Tri-State vice president of project development Bill Boyd. "All three projects are on schedule. Working with our partners, an air permit application for the new generation units in Kansas was filed earlier in the year and environmental studies for new transmission lines began in August. Land and water acquisitions continue for a new power plant in southeastern Colorado."

Air permit application filed

Tri-State and Sunflower Electric Power Corporation, a generation and transmission cooperative based in Hays, Kan., are obtaining the necessary permits to expand Sunflower's existing coal-based, 360-megawatt Holcomb Station in western Kansas.

An air permit application was filed earlier this year. Public hearings on the air permit will be held this fall, following a Holcomb Expansion Project public open house in Holcomb, Kan., on August 24.

"We're committed to build the new units at Holcomb Station with the best available control technologies to minimize emissions. All four units at Holcomb will use new control technologies to significantly reduce mercury emissions," said Boyd.

Last August, Tri-State and Sunflower signed agreements to construct two 600-megawatt generating units at Holcomb Station. As project planning matured, efficiency improvements in the plant design have increased the generating capacity for the units to 700 megawatts each. These units will serve Tri-State's members on the western interconnected transmission system.

**"We're committed to build the new units at Holcomb Station with the best available control technologies to minimize emissions."
— Bill Boyd**



At completion, the Holcomb Station Expansion Project will add three new 700-megawatt generating units to the existing 360-megawatt plant. Tri-State will own two of the new units.

Construction of the first of Tri-State's Holcomb units is scheduled to commence in mid-2008, followed by the second unit about 12 months later – which would bring the units on-line in early 2012 and early 2013, respectively. Tri-State will finance and own the two units, which will be maintained and operated by Sunflower.

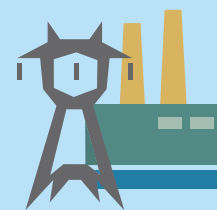
In addition to Tri-State's two units, Sunflower and Golden Spread Electric Cooperative, a Texas-based generation and transmission cooperative, announced in July their plans to develop a third new 700-megawatt unit at Holcomb Station, which will serve member loads on the eastern interconnected grid. Construction of the Sunflower/Golden Spread unit will begin in 2007.

Transmission environmental study begins

Public scoping meetings on the Eastern Plains Transmission Project are scheduled for 10 communities in eastern Colorado and western Kansas between Aug. 28 and Sept. 14. The open house

Continued on page 2

Powering the West is a publication of Tri-State G&T and is designed to share information about the company's facility



expansion plans with its member cooperatives and other key stakeholders. More information can be found on Tri-State's Web site at www.tristategt.org and clicking on the Resource Development Plan icon, pictured at left.

meetings are part of Western Area Power Administration's preparation of an environmental impact statement to evaluate its participation in the transmission project.

Western proposes to participate in the project with Tri-State in exchange for capacity rights on the transmission lines. The transmission project includes about 1,000 miles of new high-voltage transmission line and new and expanded substations in eastern Colorado and western Kansas. These new facilities would assist both Tri-State and Western to serve their customers while also enhancing the power delivery system reliability in the region, relieving existing constraints and providing opportunities for additional interconnections for other parties in the project area.

Tri-State and Western signed an agreement in November 2005 to explore developing the joint transmission construction project. A three-year construction period would follow the completion of the environmental impact statement in early 2008, with the facilities in place and operational in 2011.

Colorado Power Project land and water acquisitions

Preparations for a new power plant in southeastern Colorado continue to move forward. Since Tri-State announced an open solicitation last fall to acquire land and water, the association has made significant progress to secure the resources needed to develop a new facility. A plant site could be selected this fall, followed by the erection of a meteorological tower to collect environmental data.

The new coal-based power plant would break ground in 2016 and be operational in 2020. The resource development plan provides flexibility for Tri-State should member loads exceed or lag behind current forecasts.

"We're looking at all our options," said Boyd. "The construction start date could move up, or push back, depending on member power demands. We will also continue to evaluate new coal technologies that could be implemented in the plant design."

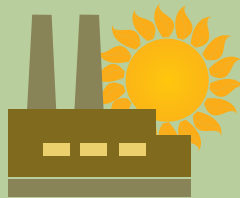
Resource Development Plan Components

The three individual projects that make up Tri-State's overall resource development plan are the Holcomb Expansion Project, the Colorado Power Project and the Eastern Plains Transmission Project.

Holcomb Expansion Project

Tri-State will construct two 700-megawatt supercritical pulverized coal units at Sunflower Electric Power Corporation's existing coal-based, 360-megawatt Holcomb Station in western Kansas. Tri-State will own its two units, which will be operated and maintained by Sunflower. The new units will use best available control technologies to minimize emissions, and all Holcomb Station units will use new control technologies to reduce mercury emissions.

Construction of the first of Tri-State's two Holcomb units begins in mid-2008, followed by the second unit about 12 months later – which would bring the units on-line in early 2012 and early 2013, respectively.

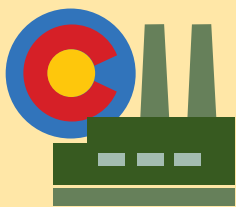


Holcomb Expansion Project Open House

The public is invited to a Holcomb Expansion Project open house to be held at Holcomb High School, 600 North Jones Ave., in Holcomb, Kan., on Aug. 24 from 4 to 8 p.m.

Project representatives will be available to share information and answer questions about the expansion of Sunflower's Holcomb Station. Public tours of the Holcomb Station power plant are available between 9 and 11 a.m. on Aug. 24 and Aug. 25.

For more information on the open house, and to register for the Holcomb Station tour, please call (620) 277-2590. For more information on the open house, visit www.sunflower.net.



Colorado Power Project

Tri-State has begun laying the necessary groundwork to develop a new coal-based power plant in southeastern Colorado. Preliminary planning and preparatory work has commenced, including water and land rights acquisition. Initial environmental studies and analysis will follow the selection of a site later this year. Forecasts call for the plant to come on-line in 2020; once built, it will be owned and operated by Tri-State.

Eastern Plains Transmission Project

Tri-State and Western Area Power Administration propose a joint construction project to develop about 1,000 miles of high-voltage transmission line and new and expanded substations in eastern Colorado and western Kansas. The new facilities would assist both Tri-State and Western to serve their customers while also enhancing power delivery system reliability in the region, relieving existing constraints and providing opportunities for additional interconnections for other parties in the project area.

A three-year construction period would follow the completion of Western's environmental impact statement and issuance of a record of decision in early 2008, with the facilities in place and operational in 2011. Up-to-date, detailed information on the project can be found at www.wapa.gov/transmission/eptp.htm.



Western to hold scoping meetings on the Eastern Plains Transmission Project

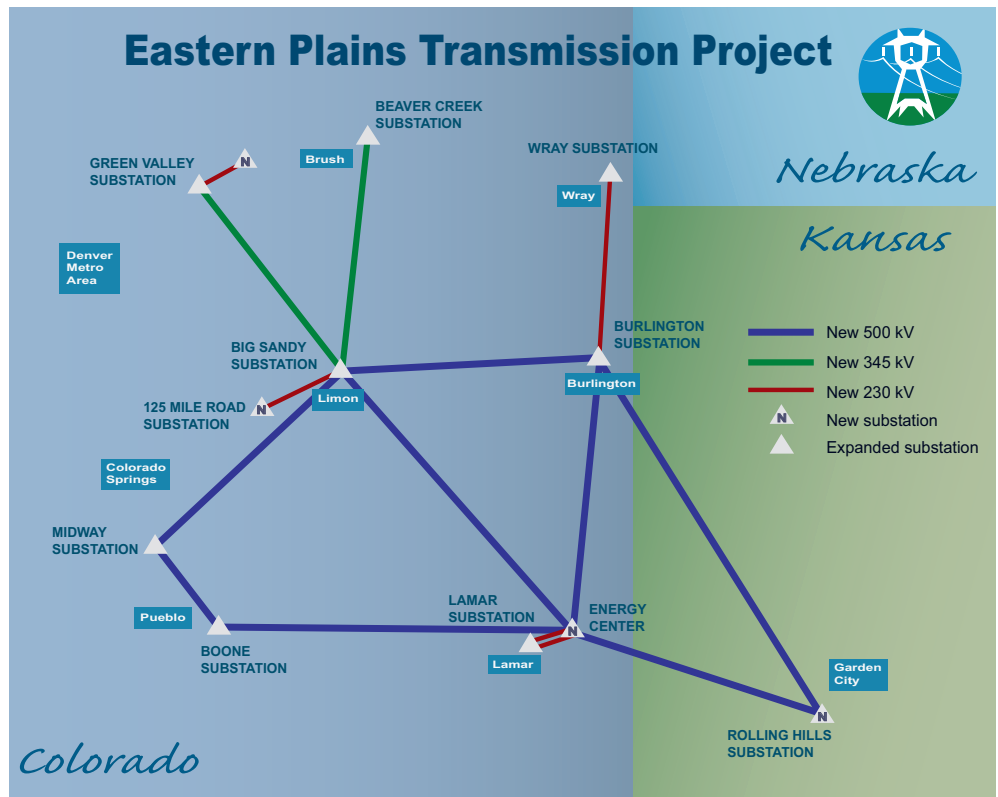
The Western Area Power Administration has scheduled scoping meetings on the Eastern Plains Transmission Project for 10 communities in eastern Colorado and western Kansas between Aug. 28 and Sept. 14. The meetings are part of Western's preparation of the Eastern Plains Transmission Project Environmental Impact Statement (EIS).

Western is proposing to participate with Tri-State in the transmission project in exchange for capacity rights on the transmission lines. These rights would provide Western with approximately 275 megawatts of system capacity on the proposed transmission system. Western needs this additional transmission system capacity to provide more economical, reliable, diverse and flexible power delivery to customers. Before Western can proceed with the project, the federal power marketing agency, which is part of the U.S. Department of Energy, must complete an EIS and issue a Record of Decision.

The EIS will address constructing, operating and maintaining about 1,000 miles of high-voltage transmission line and related facilities, expanding existing substations and constructing new substations and access roads and installing fiber optic communication facilities. The EIS will also address potential floodplain and wetland impacts.

Scoping meetings are a required part of preparing an EIS, at which the public is invited to learn about the project and its alternatives and provide comments on the scope of issues to be covered in the EIS. The meetings are in an "open house" format that includes a number of stations and exhibits where the public can learn about the project. The scoping meetings are the first opportunity for the public to view proposed transmission line corridors and new substation locations. The meetings will be held from 3 to 8 p.m. at the following dates and locations:

- Aug. 28, Brush, Colo., Carroll Building, 418 Edison Street



- Aug. 29, Wray, Colo., City Hall, Community Room, 245 W. 4th Street
- Aug. 30, Limon, Colo., Limon Community Building, North Room, 477 D Avenue
- Aug. 31, Aurora, Colo., Holiday Inn—Denver International Airport, Breckenridge Ballroom, 15500 East 40th Avenue
- Sept. 5, Fountain, Colo., Lorraine High School Community Center, 301 E. Iowa Avenue
- Sept. 6, Pueblo, Colo., Pueblo Convention Center, Fortino Grand Hall C-West, 320 Central Main Street
- Sept. 11, Burlington, Colo., Burlington Education and Community Center, 420 S. 14th Street
- Sept. 12, Sharon Springs, Kan., Community Activity Building, "CAB" Building, Wallace County Fairgrounds
- Sept. 13, Lamar, Colo., Lamar Community Building, Multi-Purpose Room, 610 South 6th Street
- Sept. 14, Lakin, Kan., Veteran's Memorial Building, 207 North Main Street

Comments on the proposed project can be submitted at one of the meetings or to Jim Hartman, Environmental Manager, Western Area Power Administration, Rocky Mountain Region, P.O. Box 3700, Loveland, CO 80539; fax 970-461-7213; or e-mail eftp@wapa.gov. Comments are due by Sept. 30.

For more information about the proposed project, please visit the project Web site online at: <http://www.wapa.gov/transmission/eftp.htm>.



About Tri-State

Tri-State G&T is a wholesale electric power supplier owned by the 44 electric cooperatives that it serves. Tri-State generates and transmits electricity to its member systems throughout a 250,000 square-mile service territory across Colorado, Nebraska, New Mexico and Wyoming, serving more than 1.2 million end-use consumers.

Tri-State was founded in 1952 by its member systems to provide a reliable, cost-based supply of electricity. Headquartered in Westminster, Colo., more than 1,000 people are employed by the association throughout its four-state service area.

Tri-State's power is generated through a combination of owned baseload and peaking power plants that use coal and natural gas as their primary fuels, supplemented by purchased power, federal hydroelectricity allocations and other renewable resource technologies.

Tri-State's mission is to provide its member-owners a reliable, cost-based supply of electricity while maintaining a sound financial position through effective utilization of human, capital and physical resources in accordance with cooperative principles.

In this issue ...

- *Resource plan moves forward*
- *Public meetings on transmission project planned*
- *Holcomb Expansion Project open house scheduled*

Sharing information

It is Tri-State's intention to communicate regularly and effectively with all concerned and affected parties as it moves forward with all the anticipated activities necessary in bringing its resource development plan to fruition. Updated information will be readily available on its Web site at www.tristategt.org/rdp or you can reach Lee Boughey, the project's public affairs contact, at 303-452-6111 or lboughey@tristategt.org.

POWERING the WEST



TRI-STATE

Generation and Transmission
Association, Inc.

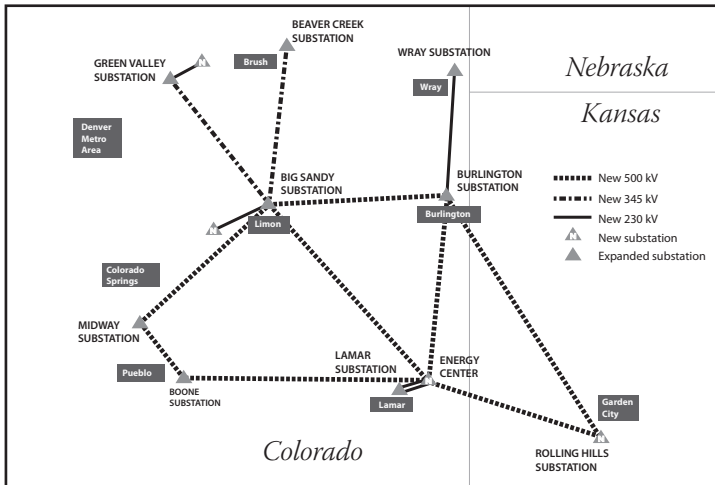
A Touchstone Energy[®] Cooperative 

P.O. Box 33695
Denver, Colorado 80233



Eastern Plains Transmission Project

We need your ideas!



Open-house meetings from 3 to 8 p.m. will be held to share information about the Eastern Plains Transmission Project and answer questions. The informal meetings will also provide you the opportunity to learn about the Environmental Impact Statement process, ask questions and make comments.

Western Area Power Administration proposes to participate with Tri-State Generation and Transmission Association, Inc., in the construction of about 1,000 miles of high-voltage transmission lines and related facilities, expansions at existing substations and construction of new substations, access roads and fiber optic communication facilities.

Visit the project Web site online at

<http://www.wapa.gov/transmission/eptp.htm>

We want your comments

Submit them at one of the meetings or send them to:

Jim Hartman, Environmental Manager,
Western Area Power Administration,
Rocky Mountain Region,
P.O. Box 3700, Loveland, CO 80539;
Fax 970-461-7213; or
e-mail eptp@wapa.gov

Comments should be submitted by Sept. 30.

Local meeting dates and locations

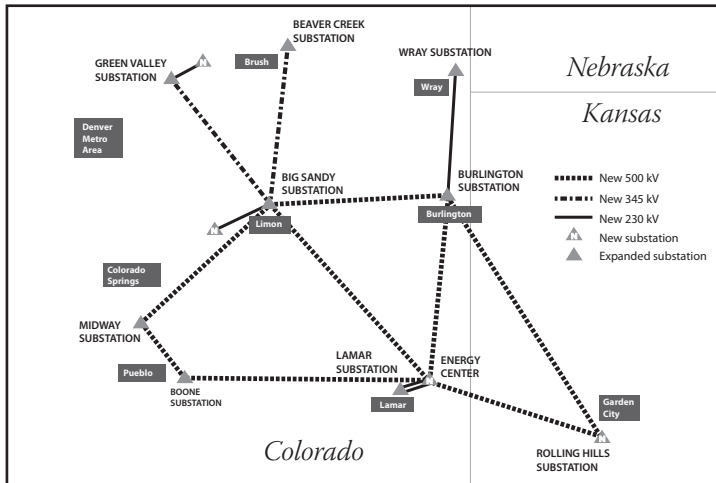
- **Aug. 28, Brush, Colo.** – Carroll Building, 418 Edison Street
- **Aug. 29, Wray, Colo.** – City Hall, Community Room, 245 W. 4th Street
- **Aug. 30, Limon, Colo.** – Limon Community Building, North Room, 477 D Avenue
- **Aug. 31, Aurora, Colo.** – Holiday Inn-Denver International Airport, Breckenridge Ballroom, 15500 East 40th Avenue
- **Sept. 11, Burlington, Colo.** – Burlington Education and Community Center, 420 S. 14th Street, Old Town

All meeting locations are wheelchair accessible. Please contact Western if you need other accommodations to attend the scoping meetings.



Eastern Plains Transmission Project

We need your ideas!



Open-house meetings from 3 to 8 p.m. will be held to share information about the Eastern Plains Transmission Project and answer questions. The informal meetings will also provide you the opportunity to learn about the Environmental Impact Statement process, ask questions and make comments.

Western Area Power Administration proposes to participate with Tri-State Generation and Transmission Association, Inc., in the construction of about 1,000 miles of high-voltage transmission lines and related facilities, expansions at existing substations and construction of new substations, access roads and fiber optic communication facilities.

Visit the project Web site online at

<http://www.wapa.gov/transmission/eptp.htm>

We want your comments

Submit them at one of the meetings or send them to:

Jim Hartman, Environmental Manager,
Western Area Power Administration,
Rocky Mountain Region,
P.O. Box 3700, Loveland, CO 80539;
Fax 970-461-7213; or
e-mail eptp@wapa.gov

Comments should be submitted by Sept. 30.

Local meeting dates and locations

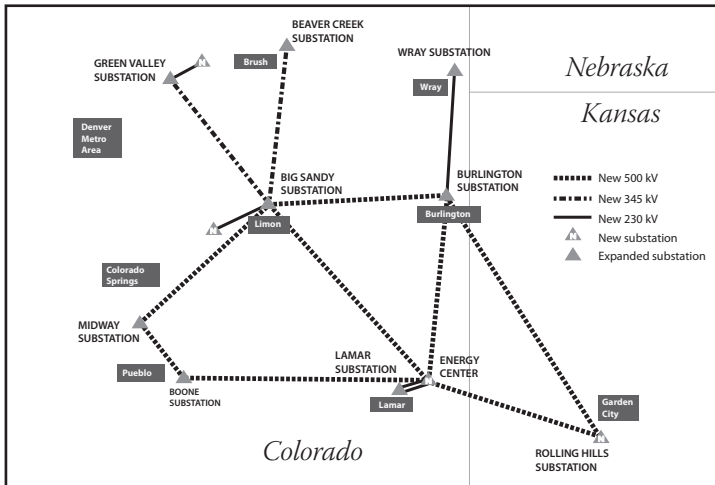
- **Sept. 5, Fountain, Colo.** – Lorraine High School/Community Center, 301 E. Iowa Avenue
- **Sept. 6, Pueblo, Colo.** – Pueblo Convention Center, Fortino Grand Hall C-West, 320 Central Main Street
- **Sept. 13, Lamar, Colo.** – Lamar Community Building, Multi-Purpose Room, 610 South 6th Street

All meeting locations are wheelchair accessible. Please contact Western if you need other accommodations to attend the scoping meetings.



Eastern Plains Transmission Project

We need your ideas!



Open-house meetings from 3 to 8 p.m. will be held to share information about the Eastern Plains Transmission Project and answer questions. The informal meetings will also provide you the opportunity to learn about the Environmental Impact Statement process, ask questions and make comments.

Western Area Power Administration proposes to participate with Tri-State Generation and Transmission Association, Inc., in the construction of about 1,000 miles of high-voltage transmission lines and related facilities, expansions at existing substations and construction of new substations, access roads and fiber optic communication facilities.

Visit the project Web site online at

<http://www.wapa.gov/transmission/eptp.htm>

We want your comments

Submit them at one of the meetings or send them to:

Jim Hartman, Environmental Manager,
Western Area Power Administration,
Rocky Mountain Region,
P.O. Box 3700, Loveland, CO 80539;
Fax 970-461-7213; or
e-mail eptp@wapa.gov

Comments should be submitted by Sept. 30.

Local meeting dates and locations

- **Sept. 11, Burlington, Colo.** – Burlington Education and Community Center, 420 S. 14th Street, Old Town
- **Sept. 12, Sharon Springs, Kan.** – Community Activity Building (CAB Building), Wallace County Fairgrounds
- **Sept. 13, Lamar, Colo.** – Lamar Community Building, Multi-Purpose Room, 610 South 6th Street
- **Sept. 14, Lakin, Kan.** – Veteran's Memorial Building, 207 North Main Street

All meeting locations are wheelchair accessible. Please contact Western if you need other accommodations to attend the scoping meetings.

THIS PAGE INTENTIONALLY LEFT BLANK



Eastern Plains Transmission Project

We need your ideas!

Open-house meetings from 3 to 8 p.m., will be held in 10 communities in eastern Colorado and western Kansas to share information about the Eastern Plains Transmission Project and answer questions.

Western Area Power Administration proposes to participate with Tri-State Generation and Transmission Association, Inc. in the construction of about 1,000 miles of high-voltage transmission lines and related facilities, expansions at existing substations and construction of new substations, access roads and fiber optic communication facilities.

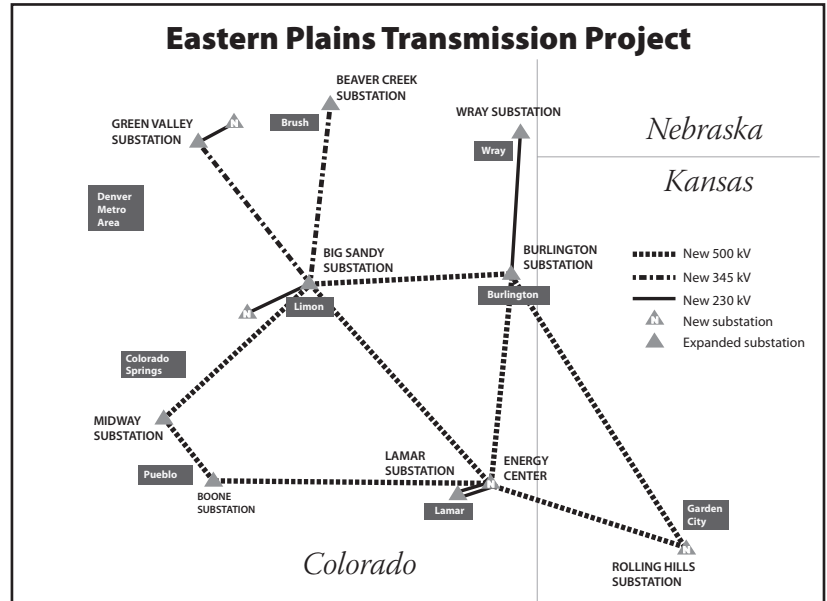
The informal open house meetings will provide you the opportunity to view proposed project and EIS process information, ask questions and make comments.

Visit the project Web site online at <http://www.wapa.gov/transmission/eftp.htm>.

We want your comments

Submit them at one of the meetings or send them to:

Jim Hartman, Environmental Manager,
Western Area Power Administration,
Rocky Mountain Region,
P.O. Box 3700, Loveland, CO 80539;
fax 970-461-7213; or
e-mail eftp@wapa.gov.
Comments are due by Sept. 30.



Meeting dates and locations

- **Aug. 28, Brush, Colo.** – Carroll Building, 418 Edison Street
- **Aug. 29, Wray, Colo.** – City Hall, Community Room, 245 W. 4th Street
- **Aug. 30, Limon, Colo.** – Limon Community Building, North Room, 477 D Avenue
- **Aug. 31, Aurora, Colo.** – Holiday Inn–Denver International Airport, Breckenridge Ballroom, 15500 East 40th Avenue
- **Sept. 5, Fountain, Colo.** – Lorraine High School/Community Center, 301 E. Iowa Avenue
- **Sept. 6, Pueblo, Colo.** – Pueblo Convention Center, Fortino Grand Hall C-West, 320 Central Main Street
- **Sept. 11, Burlington, Colo.** – Burlington Education and Community Center, 420 S. 14th Street, Old Town
- **Sept. 12, Sharon Springs, Kan.** – Community Activity Building (CAB Building), Wallace County Fairgrounds
- **Sept. 13, Lamar, Colo.** – Lamar Community Building, Multi-Purpose Room, 610 South 6th Street
- **Sept. 14, Lakin, Kan.** – Veteran’s Memorial Building, 207 North Main Street

All meeting locations are wheelchair accessible. Please contact Western if you need other accommodations to attend the scoping meetings.

THIS PAGE INTENTIONALLY LEFT BLANK

From: Western Area Power Administration
Contact: Randy Wilkerson, 720-962-7056, wilkerson@wapa.gov
For use: August 28 – August 31
Length: 1:00

**OPEN HOUSE MEETING SET FOR EASTERN PLAINS TRANSMISSION
PROJECT**

AN OPEN-HOUSE SCOPING MEETING WILL BE HELD THURSDAY, AUGUST 31, IN AURORA FROM 3 TO 8 P.M. IN THE HOLIDAY INN—DENVER INTERNATIONAL AIRPORT, BRECKENRIDGE BALLROOM AT 15500 EAST 40TH AVENUE. WESTERN AREA POWER ADMINISTRATION WILL SHARE INFORMATION AND ANSWER QUESTIONS ON A PROPOSED PROJECT TO BUILD ABOUT 1,000 MILES OF HIGH-VOLTAGE POWERLINES IN EASTERN COLORADO AND WESTERN KANSAS.

WESTERN PROPOSES TO JOIN WITH TRI-STATE GENERATION AND TRANSMISSION ASSOCIATION IN BUILDING THE EASTERN PLAINS TRANSMISSION PROJECT.

WESTERN INVITES YOU TO SUGGEST SPECIFIC ISSUES AND CONCERNS THAT SHOULD BE EVALUATED IN ITS ENVIRONMENTAL IMPACT STATEMENT ON THIS PROPOSED PROJECT. SCOPING COMMENTS ARE DUE BY SEPT. 30.

FOR MORE INFORMATION, VISIT THE PROJECT WEB SITE AT:

[HTTP://WWW.WAPA.GOV/TRANSMISSION/EPTP.HTM](http://www.wapa.gov/transmission/eptp.htm).

From: Western Area Power Administration
Contact: Randy Wilkerson, 720-962-7056, wilkerson@wapa.gov
For use: August 28 – September 11
Length: 1:00

**OPEN HOUSE MEETING SET FOR EASTERN PLAINS TRANSMISSION
PROJECT**

AN OPEN-HOUSE SCOPING MEETING WILL BE HELD MONDAY, SEPTEMBER 11, IN BURLINGTON FROM 3 TO 8 P.M. IN THE BURLINGTON EDUCATION AND COMMUNITY CENTER AT 420 S. 14TH STREET, OLD TOWN. WESTERN AREA POWER ADMINISTRATION WILL SHARE INFORMATION AND ANSWER QUESTIONS ON A PROPOSED PROJECT TO BUILD ABOUT 1,000 MILES OF HIGH-VOLTAGE POWERLINES IN EASTERN COLORADO AND WESTERN KANSAS.

WESTERN PROPOSES TO JOIN WITH TRI-STATE GENERATION AND TRANSMISSION ASSOCIATION IN BUILDING THE EASTERN PLAINS TRANSMISSION PROJECT.

WESTERN INVITES YOU TO SUGGEST SPECIFIC ISSUES AND CONCERNS THAT SHOULD BE EVALUATED IN ITS ENVIRONMENTAL IMPACT STATEMENT ON THIS PROPOSED PROJECT. SCOPING COMMENTS ARE DUE BY SEPT. 30.

FOR MORE INFORMATION, VISIT THE PROJECT WEB SITE AT:

[HTTP://WWW.WAPA.GOV/TRANSMISSION/EPTP.HTM](http://www.wapa.gov/transmission/eptp.htm).

From: Western Area Power Administration
Contact: Randy Wilkerson, 720-962-7056, wilkerson@wapa.gov
For use: August 28 – September 5
Length: 1:00

**OPEN HOUSE MEETING SET FOR EASTERN PLAINS TRANSMISSION
PROJECT**

AN OPEN-HOUSE SCOPING MEETING WILL BE HELD TUESDAY, SEPTEMBER 5, IN FOUNTAIN FROM 3 TO 8 P.M. IN THE LORRAINE HIGH SCHOOL/COMMUNITY CENTER AT 301 E. IOWA AVENUE. WESTERN AREA POWER ADMINISTRATION WILL SHARE INFORMATION AND ANSWER QUESTIONS ON A PROPOSED PROJECT TO BUILD ABOUT 1,000 MILES OF HIGH-VOLTAGE POWERLINES IN EASTERN COLORADO AND WESTERN KANSAS.

WESTERN PROPOSES TO JOIN WITH TRI-STATE GENERATION AND TRANSMISSION ASSOCIATION IN BUILDING THE EASTERN PLAINS TRANSMISSION PROJECT.

WESTERN INVITES YOU TO SUGGEST SPECIFIC ISSUES AND CONCERNS THAT SHOULD BE EVALUATED IN ITS ENVIRONMENTAL IMPACT STATEMENT ON THIS PROPOSED PROJECT. SCOPING COMMENTS ARE DUE BY SEPT. 30.

FOR MORE INFORMATION, VISIT THE PROJECT WEB SITE AT:

[HTTP://WWW.WAPA.GOV/TRANSMISSION/EPTP.HTM](http://www.wapa.gov/transmission/eptp.htm).

From: Western Area Power Administration
Contact: Randy Wilkerson, 720-962-7056, wilkerson@wapa.gov
For use: August 28 – September 14
Length: 1:00

**OPEN HOUSE MEETING SET FOR EASTERN PLAINS TRANSMISSION
PROJECT**

AN OPEN-HOUSE SCOPING MEETING WILL BE HELD THURSDAY,
SEPTEMBER 14, IN LAKIN FROM 3 TO 8 P.M. IN THE VETERAN'S MEMORIAL
BUILDING AT 207 NORTH MAIN STREET. WESTERN AREA POWER
ADMINISTRATION WILL SHARE INFORMATION AND ANSWER QUESTIONS
ON A PROPOSED PROJECT TO BUILD ABOUT 1,000 MILES OF HIGH-VOLTAGE
POWERLINES IN EASTERN COLORADO AND WESTERN KANSAS.

WESTERN PROPOSES TO JOIN WITH TRI-STATE GENERATION AND
TRANSMISSION ASSOCIATION IN BUILDING THE EASTERN PLAINS
TRANSMISSION PROJECT.

WESTERN INVITES YOU TO SUGGEST SPECIFIC ISSUES AND CONCERNS
THAT SHOULD BE EVALUATED IN ITS ENVIRONMENTAL IMPACT
STATEMENT ON THIS PROPOSED PROJECT. SCOPING COMMENTS ARE DUE
BY SEPT. 30.

FOR MORE INFORMATION, VISIT THE PROJECT WEB SITE AT:

[HTTP://WWW.WAPA.GOV/TRANSMISSION/EPTP.HTM](http://www.wapa.gov/transmission/eptp.htm).

THIS PAGE INTENTIONALLY LEFT BLANK

From: Western Area Power Administration
Contact: Randy Wilkerson, 720-962-7056, wilkerson@wapa.gov
For use: August 28 – September 13
Length: 1:00

**OPEN HOUSE MEETING SET FOR EASTERN PLAINS TRANSMISSION
PROJECT**

AN OPEN-HOUSE SCOPING MEETING WILL BE HELD WEDNESDAY,
SEPTEMBER 13, IN LAMAR FROM 3 TO 8 P.M. IN THE LAMAR COMMUNITY
BUILDING, MULTI-PURPOSE ROOM AT 610 SOUTH 6TH STREET. WESTERN
AREA POWER ADMINISTRATION WILL SHARE INFORMATION AND ANSWER
QUESTIONS ON A PROPOSED PROJECT TO BUILD ABOUT 1,000 MILES OF
HIGH-VOLTAGE POWERLINES IN EASTERN COLORADO AND WESTERN
KANSAS.

WESTERN PROPOSES TO JOIN WITH TRI-STATE GENERATION AND
TRANSMISSION ASSOCIATION IN BUILDING THE EASTERN PLAINS
TRANSMISSION PROJECT.

WESTERN INVITES YOU TO SUGGEST SPECIFIC ISSUES AND CONCERNS
THAT SHOULD BE EVALUATED IN ITS ENVIRONMENTAL IMPACT
STATEMENT ON THIS PROPOSED PROJECT. SCOPING COMMENTS ARE DUE
BY SEPT. 30.

FOR MORE INFORMATION, VISIT THE PROJECT WEB SITE AT:

[HTTP://WWW.WAPA.GOV/TRANSMISSION/EPTP.HTM](http://www.wapa.gov/transmission/eptp.htm).

From: Western Area Power Administration
Contact: Randy Wilkerson, 720-962-7056, wilkerson@wapa.gov
For use: August 28 – August 30
Length: 1:00

**OPEN HOUSE MEETING SET FOR EASTERN PLAINS TRANSMISSION
PROJECT**

AN OPEN-HOUSE SCOPING MEETING WILL BE HELD WEDNESDAY, AUGUST 30, IN LIMON FROM 3 TO 8 P.M. IN THE LIMON COMMUNITY BUILDING, NORTH ROOM AT 477 D AVENUE. WESTERN AREA POWER ADMINISTRATION WILL SHARE INFORMATION AND ANSWER QUESTIONS ON A PROPOSED PROJECT TO BUILD ABOUT 1,000 MILES OF HIGH-VOLTAGE POWERLINES IN EASTERN COLORADO AND WESTERN KANSAS.

WESTERN PROPOSES TO JOIN WITH TRI-STATE GENERATION AND TRANSMISSION ASSOCIATION IN BUILDING THE EASTERN PLAINS TRANSMISSION PROJECT.

WESTERN INVITES YOU TO SUGGEST SPECIFIC ISSUES AND CONCERNS THAT SHOULD BE EVALUATED IN ITS ENVIRONMENTAL IMPACT STATEMENT ON THIS PROPOSED PROJECT. SCOPING COMMENTS ARE DUE BY SEPT. 30.

FOR MORE INFORMATION, VISIT THE PROJECT WEB SITE AT:

[HTTP://WWW.WAPA.GOV/TRANSMISSION/EPTP.HTM](http://www.wapa.gov/transmission/eptp.htm).

THIS PAGE INTENTIONALLY LEFT BLANK

From: Western Area Power Administration
Contact: Randy Wilkerson, 720-962-7056, wilkerson@wapa.gov
For use: August 28 – September 6
Length: 1:00

**OPEN HOUSE MEETING SET FOR EASTERN PLAINS TRANSMISSION
PROJECT**

AN OPEN-HOUSE SCOPING MEETING WILL BE HELD WEDNESDAY,
SEPTEMBER 6, IN PUEBLO FROM 3 TO 8 P.M. IN THE PUEBLO CONVENTION
CENTER, FORTINO GRAND HALL C-WEST AT 320 CENTRAL MAIN STREET.
WESTERN AREA POWER ADMINISTRATION WILL SHARE INFORMATION
AND ANSWER QUESTIONS ON A PROPOSED PROJECT TO BUILD ABOUT
1,000 MILES OF HIGH-VOLTAGE POWERLINES IN EASTERN COLORADO AND
WESTERN KANSAS.

WESTERN PROPOSES TO JOIN WITH TRI-STATE GENERATION AND
TRANSMISSION ASSOCIATION IN BUILDING THE EASTERN PLAINS
TRANSMISSION PROJECT.

WESTERN INVITES YOU TO SUGGEST SPECIFIC ISSUES AND CONCERNS
THAT SHOULD BE EVALUATED IN ITS ENVIRONMENTAL IMPACT
STATEMENT ON THIS PROPOSED PROJECT. SCOPING COMMENTS ARE DUE
BY SEPT. 30.

FOR MORE INFORMATION, VISIT THE PROJECT WEB SITE AT:

[HTTP://WWW.WAPA.GOV/TRANSMISSION/EPTP.HTM](http://www.wapa.gov/transmission/eptp.htm).

From: Western Area Power Administration
Contact: Randy Wilkerson, 720-962-7056, wilkerson@wapa.gov
For use: August 28 – September 12
Length: 1:00

**OPEN HOUSE MEETING SET FOR EASTERN PLAINS TRANSMISSION
PROJECT**

AN OPEN-HOUSE SCOPING MEETING WILL BE HELD TUESDAY, SEPTEMBER 12, IN SHARON SPRINGS FROM 3 TO 8 P.M. IN THE COMMUNITY ACTIVITY BUILDING AT THE WALLACE COUNTY FAIRGROUNDS. WESTERN AREA POWER ADMINISTRATION WILL SHARE INFORMATION AND ANSWER QUESTIONS ON A PROPOSED PROJECT TO BUILD ABOUT 1,000 MILES OF HIGH-VOLTAGE POWERLINES IN EASTERN COLORADO AND WESTERN KANSAS.

WESTERN PROPOSES TO JOIN WITH TRI-STATE GENERATION AND TRANSMISSION ASSOCIATION IN BUILDING THE EASTERN PLAINS TRANSMISSION PROJECT.

WESTERN INVITES YOU TO SUGGEST SPECIFIC ISSUES AND CONCERNS THAT SHOULD BE EVALUATED IN ITS ENVIRONMENTAL IMPACT STATEMENT ON THIS PROPOSED PROJECT. SCOPING COMMENTS ARE DUE BY SEPT. 30.

FOR MORE INFORMATION, VISIT THE PROJECT WEB SITE AT:

[HTTP://WWW.WAPA.GOV/TRANSMISSION/EPTP.HTM](http://www.wapa.gov/transmission/eptp.htm).

From: Western Area Power Administration
Contact: Randy Wilkerson, 720-962-7056, wilkerson@wapa.gov
For use: August 28 – August 29
Length: 1:00

**OPEN HOUSE MEETING SET FOR EASTERN PLAINS TRANSMISSION
PROJECT**

AN OPEN-HOUSE SCOPING MEETING WILL BE HELD TUESDAY, AUGUST 29, IN WRAY FROM 3 TO 8 P.M. IN THE CITY HALL COMMUNITY ROOM AT 245 W. 4TH STREET. WESTERN AREA POWER ADMINISTRATION WILL SHARE INFORMATION AND ANSWER QUESTIONS ON A PROPOSED PROJECT TO BUILD ABOUT 1,000 MILES OF HIGH-VOLTAGE POWERLINES IN EASTERN COLORADO AND WESTERN KANSAS.

WESTERN PROPOSES TO JOIN WITH TRI-STATE GENERATION AND TRANSMISSION ASSOCIATION IN BUILDING THE EASTERN PLAINS TRANSMISSION PROJECT.

WESTERN INVITES YOU TO SUGGEST SPECIFIC ISSUES AND CONCERNS THAT SHOULD BE EVALUATED IN ITS ENVIRONMENTAL IMPACT STATEMENT ON THIS PROPOSED PROJECT. SCOPING COMMENTS ARE DUE BY SEPT. 30.

FOR MORE INFORMATION, VISIT THE PROJECT WEB SITE AT:

[HTTP://WWW.WAPA.GOV/TRANSMISSION/EPTP.HTM](http://www.wapa.gov/transmission/eptp.htm).

THIS PAGE INTENTIONALLY LEFT BLANK