



Burlington Substation to Wray Substation

Category Ranks	Alternative - Segments		
	56 - H1, H2, H4, H6	57 - H1, H2, H5, H6	58 - H1, H3
Engineering	1	2	3
Geology and Soils	2	2	1
Water Resources	1	2	3
Vegetation	1	1	3
Wildlife	2	1	2
Land Use	1	3	2
Cultural Resources	1	1	1
Category Rank Total	9	12	15
Alternative Rank	1	2	3

Proposed, alternative, and other routes are subject to change.

Description & Results

The Burlington Substation to Wray Substation transmission line would be approximately 60 miles in length. The transmission line would begin at the existing Burlington Substation near Burlington, Colorado, cross U.S. Highway 36 near the town of Idalia, Colorado, and end at the existing Wray Substation near Wray, Colorado.

Route refinement adjusted segment H1 to avoid homes and irrigated cropland. A route formerly connecting segments H2 and H3 near Idalia, Colorado was removed because of its potential effects to natural resources. Specifically, the transmission line would have caused substantial soil and visual effects because it would have been situated on a bluff in open rangeland.

Alternative 56 was identified as the proposed route because it would affect fewer homes and would not affect Bonny Lake State Park.

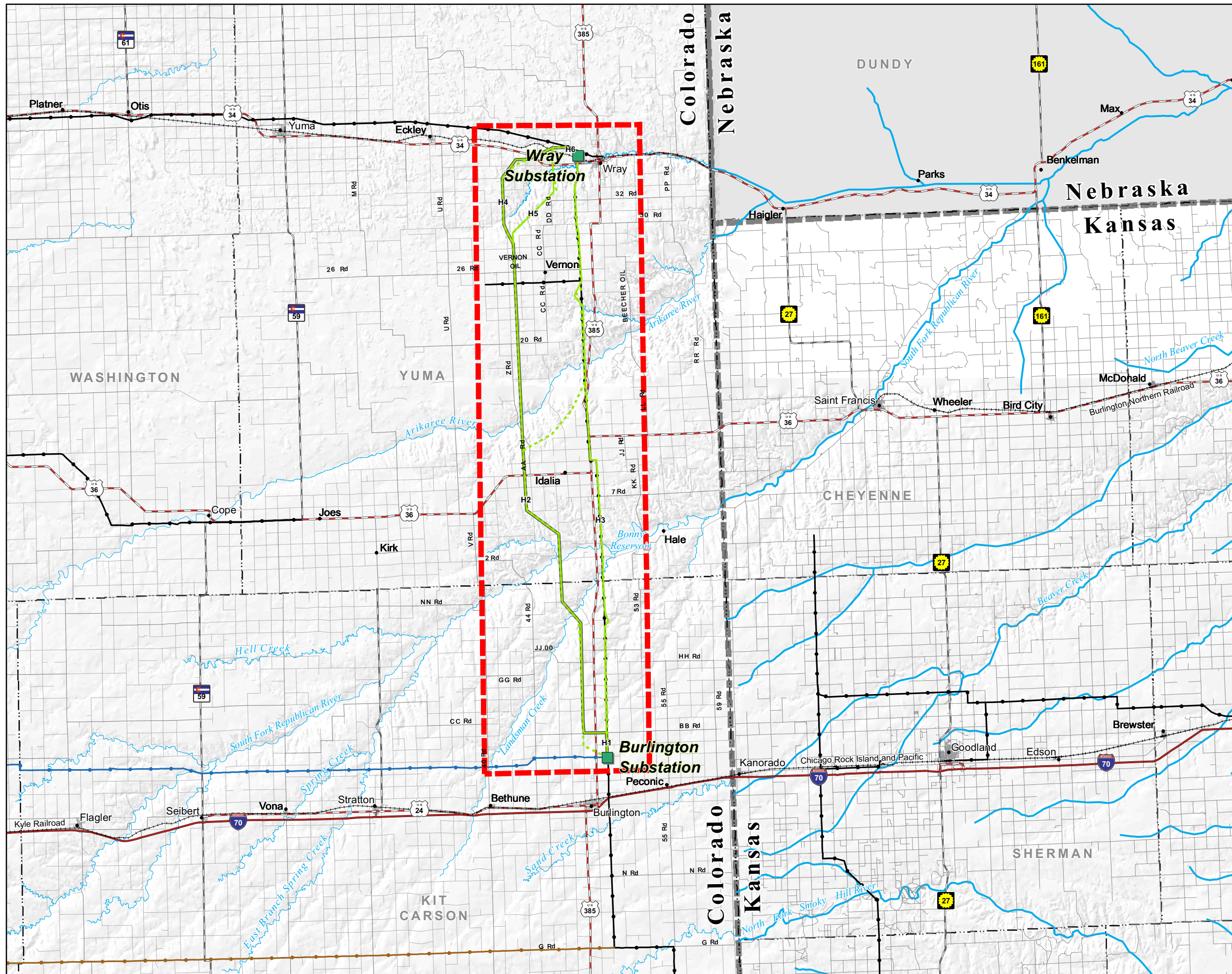
Alternative 58 would affect more homes, especially those along U.S. Highway 385. It would also be near, and could affect, Bonny Lake State Park, an important recreation area. Alternative 57 would avoid Bonny Lake State Park, but would affect more homes near Wray, Colorado along segment H5.

Siting Considerations

The proposed and alternative routes respond to scoping comments and additional ground and aerial surveillance.

Route-specific comments from scoping included the following:

- Avoid feedlots between H5 and US 385
- H2 less populated than H1



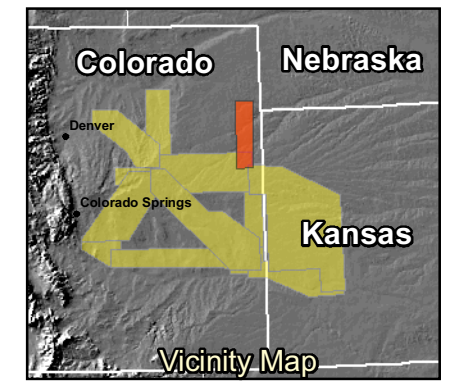
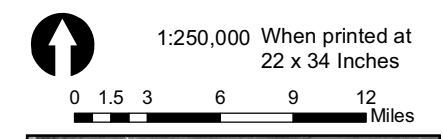
Base Map

Burlington to Wray

Legend

- Substations**
 - Existing Substation
- Analysis Area**
 - Burlington to Wray
- Transportation**
 - Interstate Highway
 - State Highway
 - U.S. Highway
 - Minor Road
 - Major Road
 - Railroad
- Existing Transmission Lines**
 - 115-kV Transmission Line
 - 230-kV Transmission Line
 - 345-kV Transmission Line
 - 69-kV Transmission Line
- Routes**
 - Proposed (500-kV)
 - Alternative (500-kV)
 - Previous (500-kV)
- Structures** (Digitized from aerial photography)
 - Residence
 - Other Structure

Source Data:
 ESRI (Cities), BTS (Highways, Airports),
 National Atlas (States, Counties),
 CDOT (CO Rail, Roads, Counties, City Boundaries),
 Census (KS Rail, Roads),
 KS Geological Survey (KS Counties)
 Western and Xcel (Existing Transmission)



Last Updated: 01/17/07	
MXD Path: P:\2006\06180035.01\GIS\Layouts\Second_Public_Meeting\Wray_Burlington_Base_Matrix	
MXD Path: P:\2006\06180035.01\GIS\Maps\Second_Public_Meeting\Wray_Burlington_Base_Matrix	

