

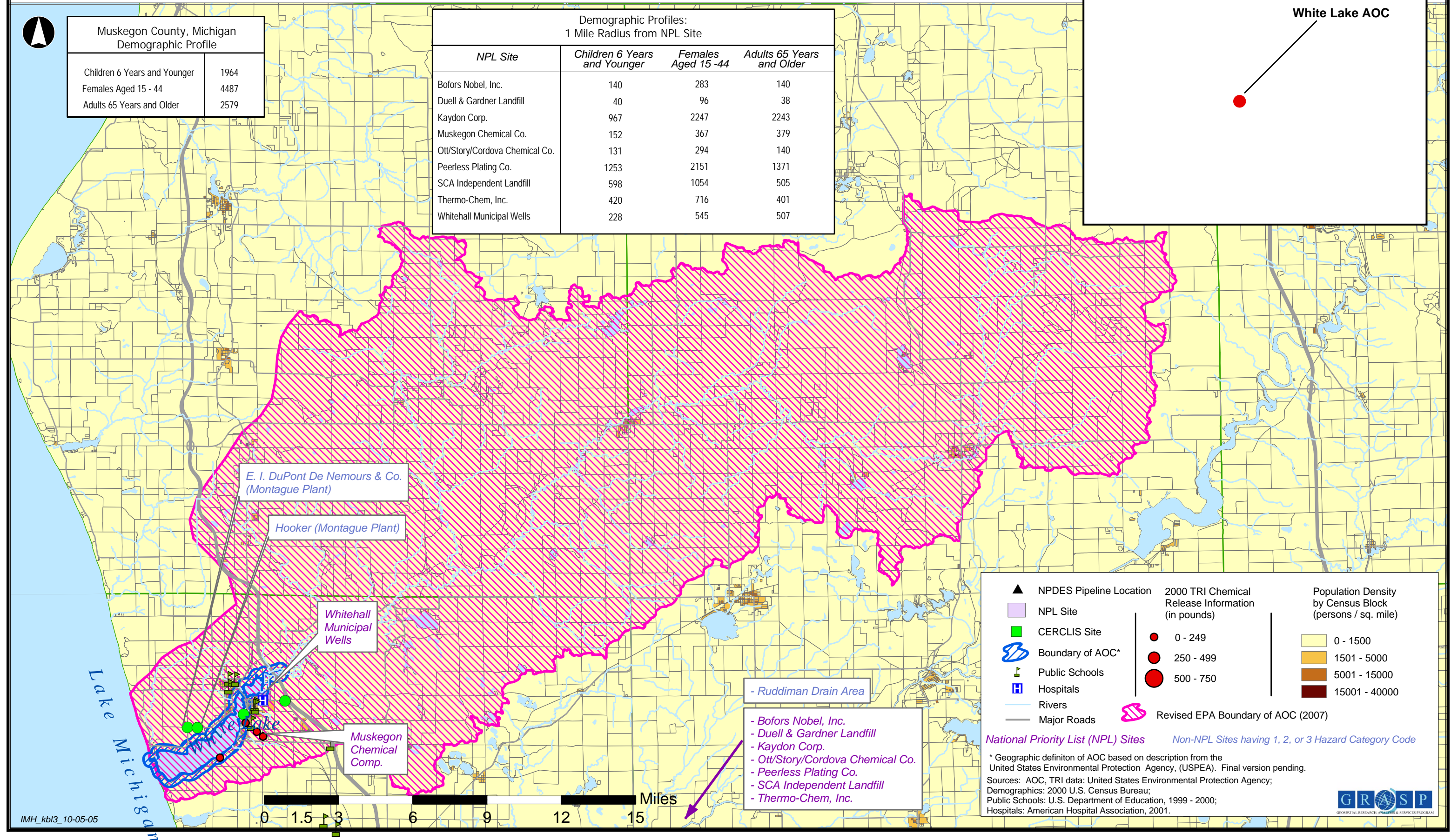
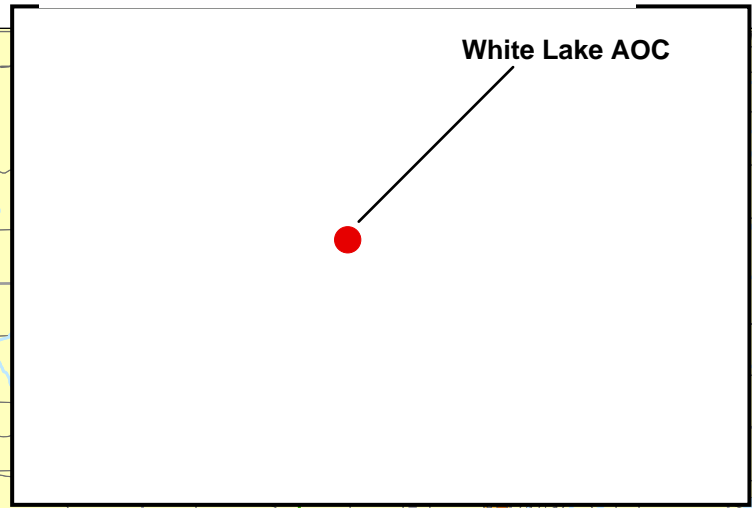
White Lake Area of Concern Muskegon County, Michigan

Great Lakes
Areas of Concern



Muskegon County, Michigan Demographic Profile	
Children 6 Years and Younger	1964
Females Aged 15 - 44	4487
Adults 65 Years and Older	2579

Demographic Profiles: 1 Mile Radius from NPL Site			
NPL Site	Children 6 Years and Younger	Females Aged 15 -44	Adults 65 Years and Older
Bofors Nobel, Inc.	140	283	140
Duell & Gardner Landfill	40	96	38
Kaydon Corp.	967	2247	2243
Muskegon Chemical Co.	152	367	379
Ott/Story/Cordova Chemical Co.	131	294	140
Peerless Plating Co.	1253	2151	1371
SCA Independent Landfill	598	1054	505
Thermo-Chem, Inc.	420	716	401
Whitehall Municipal Wells	228	545	507



▲ NPDES Pipeline Location	2000 TRI Chemical Release Information (in pounds)	Population Density by Census Block (persons / sq. mile)
■ NPL Site	● 0 - 249	□ 0 - 1500
■ CERCLIS Site	● 250 - 499	□ 1501 - 5000
⊞ Boundary of AOC*	● 500 - 750	□ 5001 - 15000
⚡ Public Schools	⊞ Revised EPA Boundary of AOC (2007)	□ 15001 - 40000
⚪ Hospitals		
⚡ Rivers		
⚡ Major Roads		

National Priority List (NPL) Sites
 - Bofors Nobel, Inc.
 - Duell & Gardner Landfill
 - Kaydon Corp.
 - Ott/Story/Cordova Chemical Co.
 - Peerless Plating Co.
 - SCA Independent Landfill
 - Thermo-Chem, Inc.

Non-NPL Sites having 1, 2, or 3 Hazard Category Code

* Geographic definition of AOC based on description from the United States Environmental Protection Agency, (USPEA). Final version pending.
 Sources: AOC, TRI data: United States Environmental Protection Agency;
 Demographics: 2000 U.S. Census Bureau;
 Public Schools: U.S. Department of Education, 1999 - 2000;
 Hospitals: American Hospital Association, 2001.