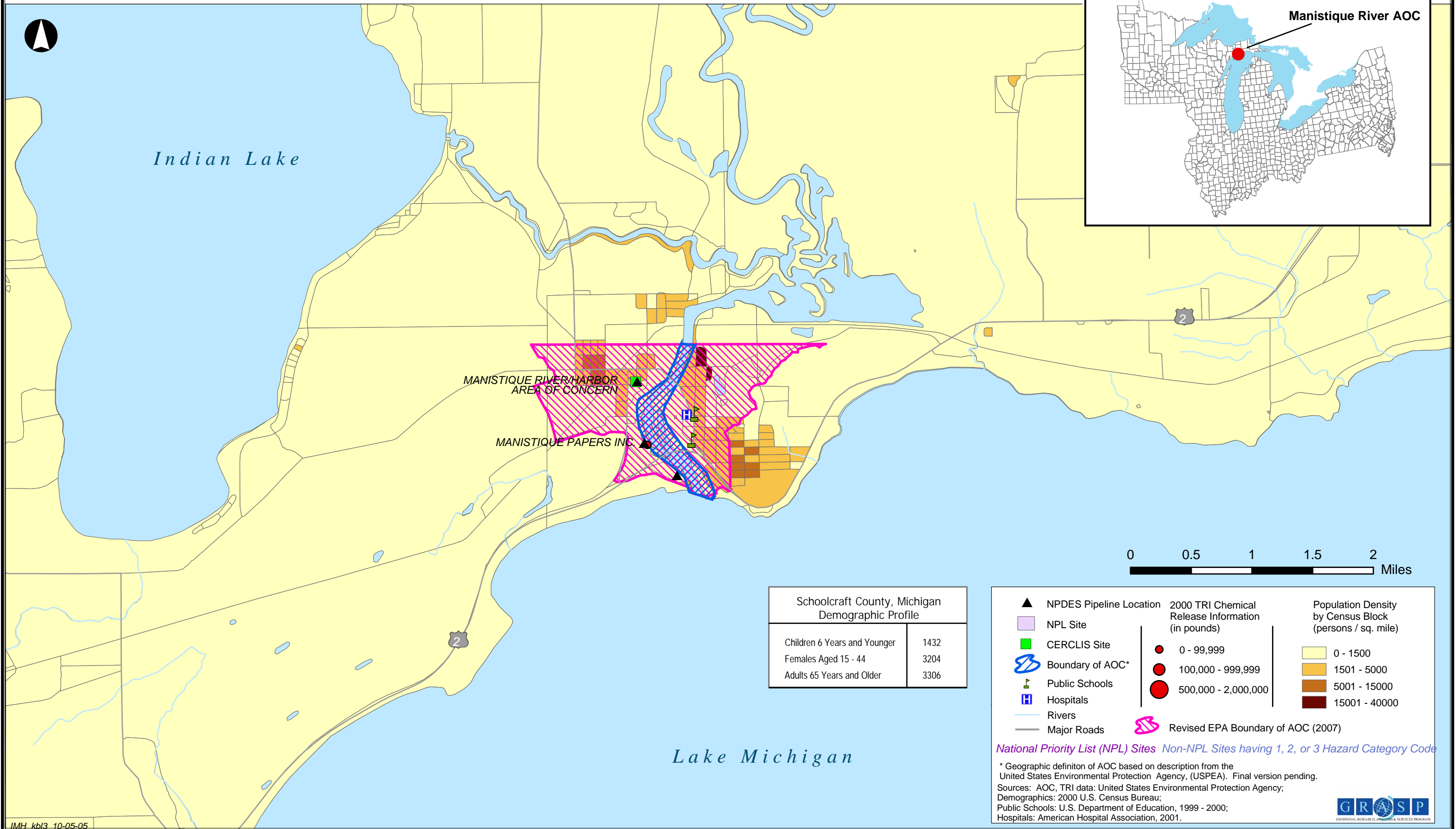


Manistique River Area of Concern Schoolcraft County, Michigan

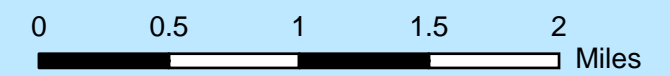
Great Lakes
Areas of Concern



MANISTIQUE RIVER/HARBOR
AREA OF CONCERN

MANISTIQUE PAPERS INC.

Schoolcraft County, Michigan Demographic Profile	
Children 6 Years and Younger	1432
Females Aged 15 - 44	3204
Adults 65 Years and Older	3306



▲ NPDES Pipeline Location	● 2000 TRI Chemical Release Information (in pounds)	■ Population Density by Census Block (persons / sq. mile)
■ NPL Site	● 0 - 99,999	■ 0 - 1500
■ CERCLIS Site	● 100,000 - 999,999	■ 1501 - 5000
⊕ Boundary of AOC*	● 500,000 - 2,000,000	■ 5001 - 15000
⊕ Public Schools	● Revised EPA Boundary of AOC (2007)	■ 15001 - 40000
⊕ Hospitals		
— Rivers		
— Major Roads		

National Priority List (NPL) Sites Non-NPL Sites having 1, 2, or 3 Hazard Category Code

* Geographic definition of AOC based on description from the United States Environmental Protection Agency, (USPEA). Final version pending.
Sources: AOC, TRI data: United States Environmental Protection Agency;
Demographics: 2000 U.S. Census Bureau;
Public Schools: U.S. Department of Education, 1999 - 2000;
Hospitals: American Hospital Association, 2001.

Lake Michigan