



Ocean and Coastal
Resource Management

South Carolina State Update 2006

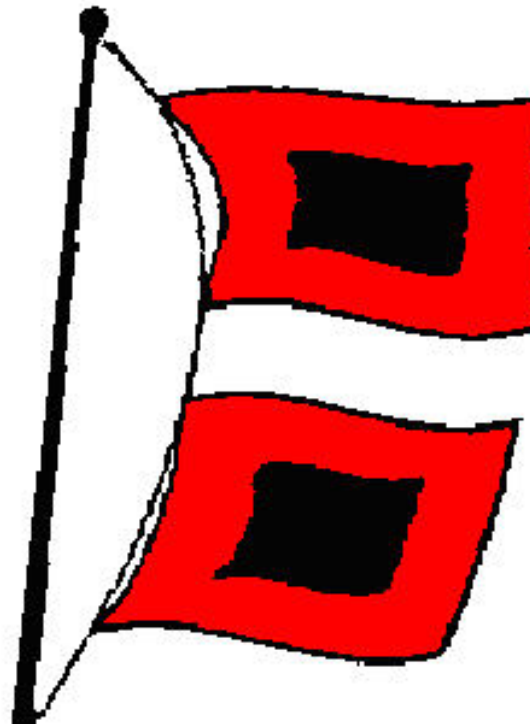
Barbara Neale
Acting Director Regulatory Programs Division

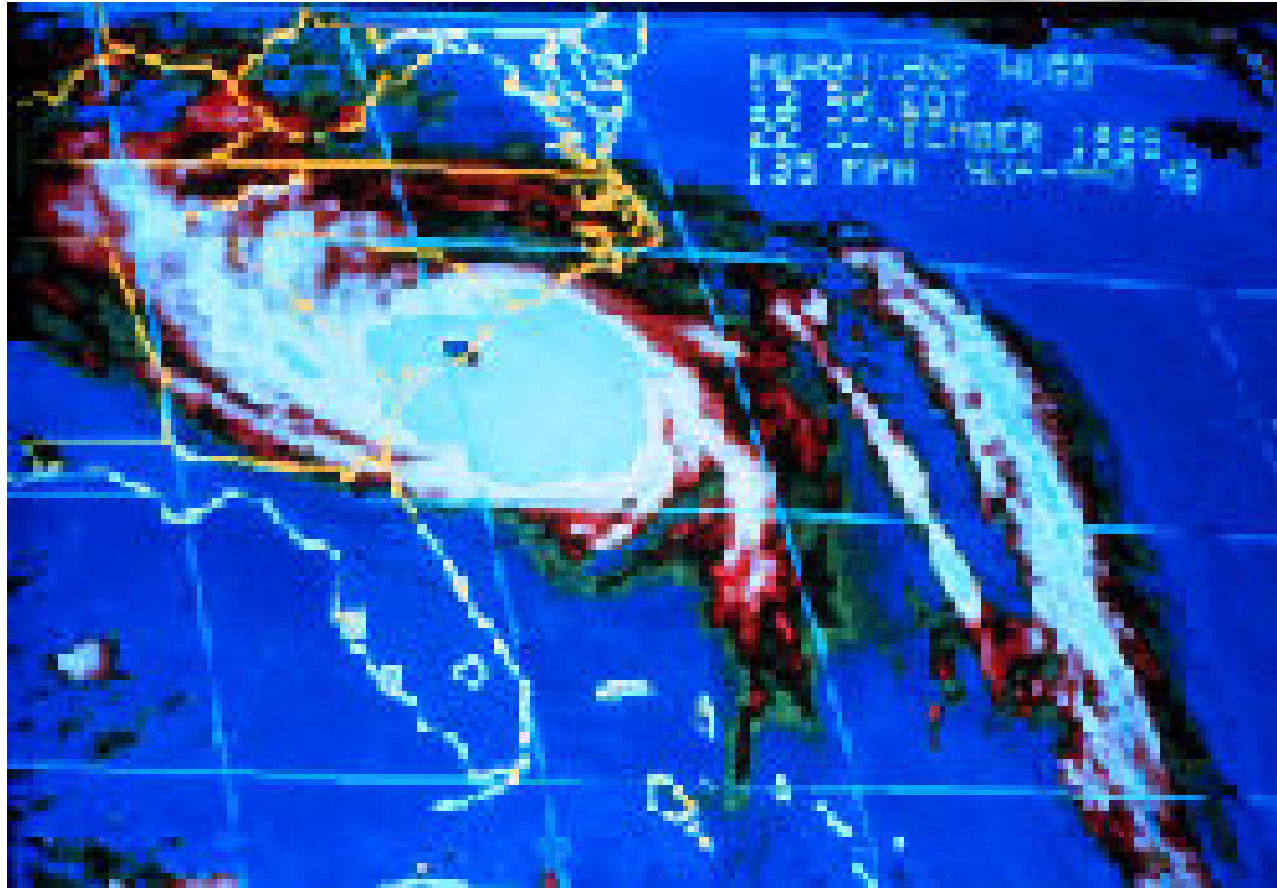
What's New

Recent Changes to Program

- **Emergency Response Plan**
- **New Initiatives**
 - **Marine Debris Removal**
 - **Compliance Initiative**
 - **Access to Coastal Islands**
- **Port Expansion**
- **Successful Projects**

Hurricane Plan



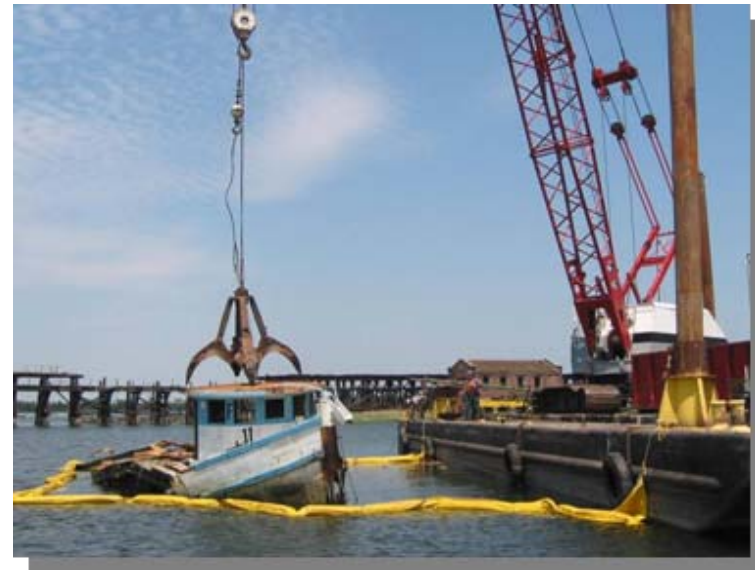




South Carolina Department of Health and Environmental Control
Office of Ocean and Coastal Resource Management

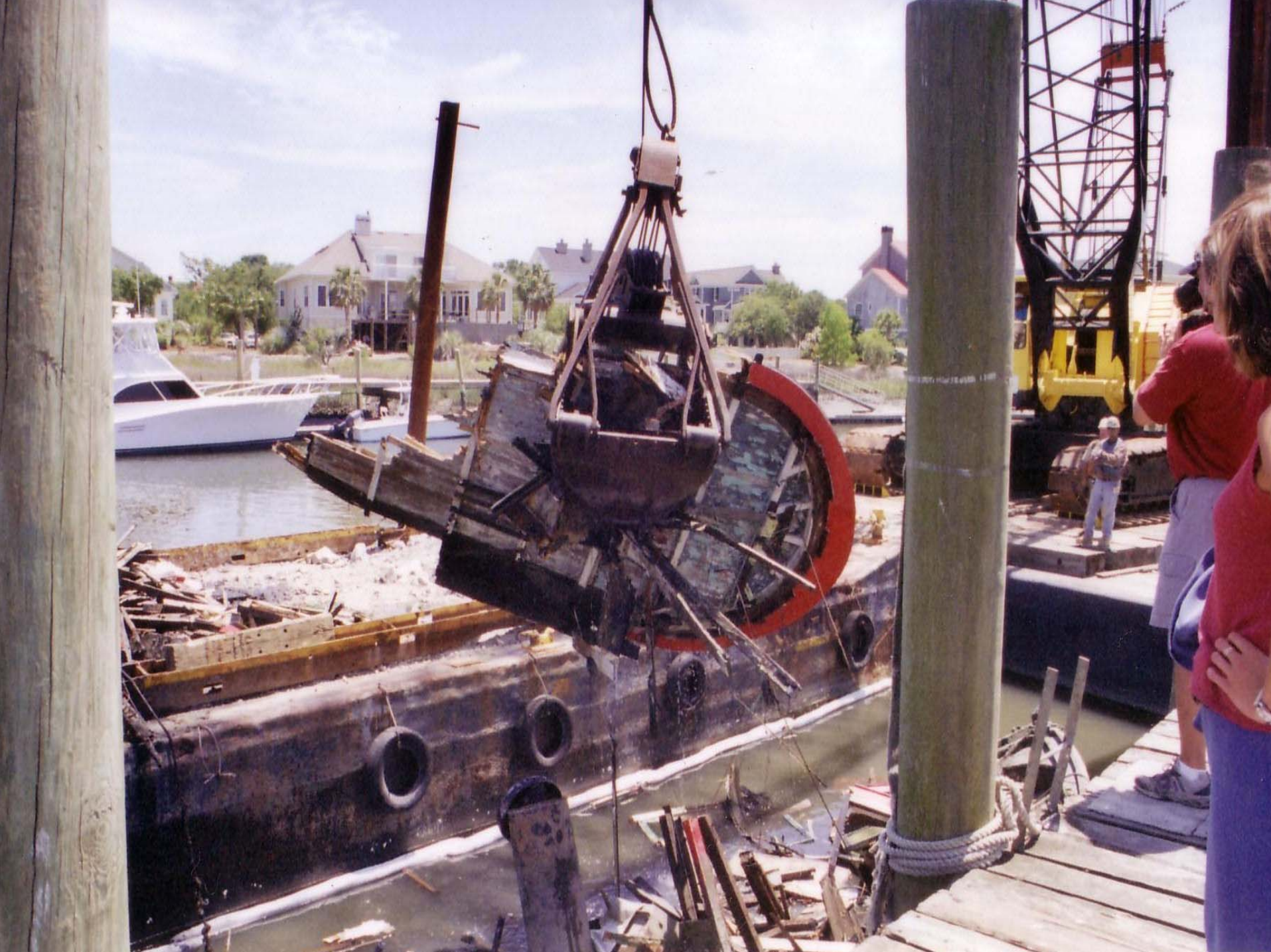
Marine Debris Removal Program

Protecting the safety and beauty of our coastal waterways through strategic removal of hazardous debris and abandoned vessels.











Marine Debris Removal Program

Program Partners:

- **DHEC**
- **Department of Natural Resources**
- **United States Coast Guard**
- **United State Army Corps of Engineers**
- **NOAA**

Compliance Initiative

Renewed focus to ensure compliance with critical area, stormwater and beachfront development regulations.



Compliance Initiative

- **Inspecting backlog of projects**
- **Developing process for keeping up with ongoing compliance**
- **Comprehensive approach to future compliance work**

Access to Coastal Islands

- **SC Supreme Court nullified existing regulations in February 2005**
- **OCRM assembled 6 member committee comprised of broad interest groups including conservationists & developers**
- **Committee came up with comprehensive recommendations**
- **Committee recommendations approved by DHEC Board**
- **Forwarded to the General Assembly for consideration**







Access to Coastal Islands

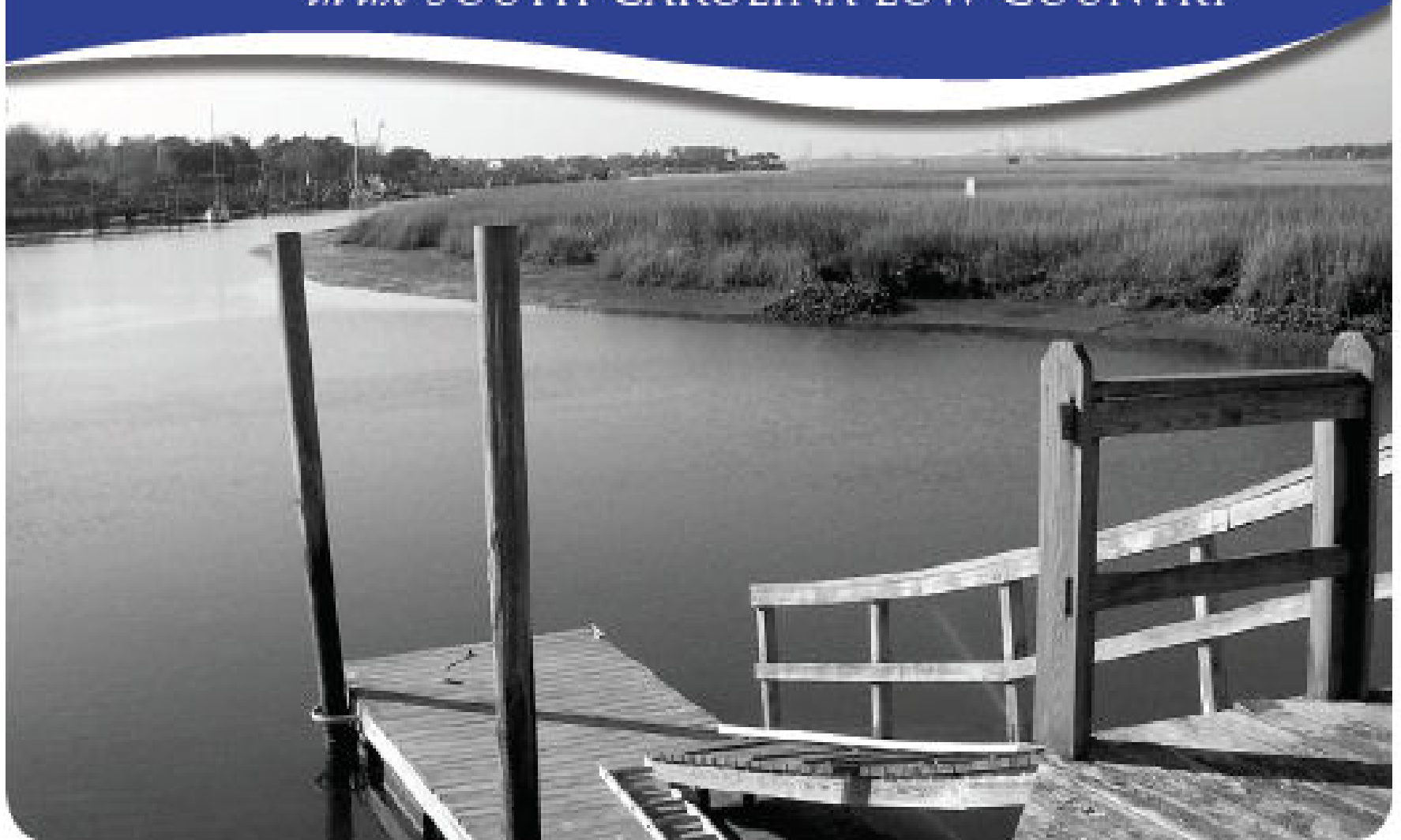
Consensus-driven negotiation process produced comprehensive recommendations for the protection and reasonable access to coastal islands.



Proposed Charleston Naval Complex (CNC) - Marine Container Terminal



BUILDING A DOCK
in the SOUTH CAROLINA LOW COUNTRY



When Nature Calls, Don't Get Caught

- In Charleston, cats and dogs produce about 10,000 pounds of waste each day.
- Pet waste can wash into storm drains and go directly into waterways without being treated.
- Pet waste can also wash directly into marshes and waterways.



Help keep pet waste from polluting our water:

- Scoop the poop. Take a plastic bag with you on your walk.
- Wrap pet waste in a plastic bag and put it into the trash.
- Flush pet waste down the toilet (if you are on a public sewer). Do NOT flush kitty litter.
- Bury pet waste in your yard. Bury it 6 inches deep, away from waterways and gardens.
- Don't put pet waste in the compost pile.



*Promoting and protecting the health of the public
and the environment.*

CR000412 003

This publication was prepared by SC DHEC under award NNA03NE54190101 from the National Oceanic and Atmospheric Administration, U.S. Department of Commerce. The statements, findings, conclusions, and recommendations are those of the author(s) and do not necessarily reflect the views of the National Oceanic and Atmospheric Administration or the Department of Commerce.

Help keep our pets from polluting. Scoop the poop.