



# ***StormReady***

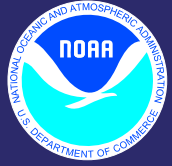
---

**Working Together to Save Lives**

---

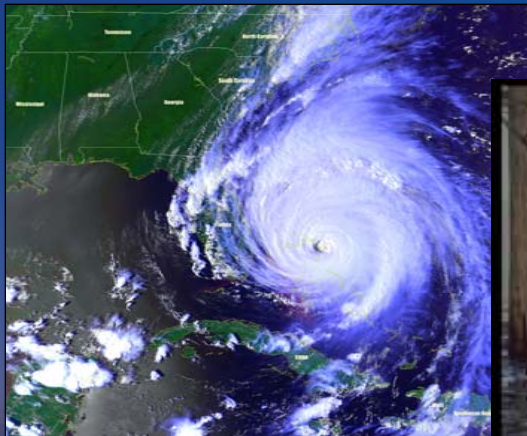
***Kevin Lynott***

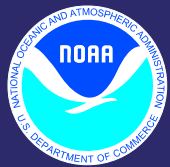
***NOAA's National Weather Service  
Silver Spring, MD.***



# Why do we need StormReady?

- **Approximately 90% of all Presidentially declared disasters are weather related**
- **On average there are 500 weather related deaths each year across America**
- **Severe weather causes nearly \$14 Billion in property damage each year**





# What is StormReady?

- **StormReady is a “grass roots” program that focuses on improving communication and severe weather preparedness in communities**
- **StormReady helps community leaders and emergency managers strengthen local safety programs**
- **StormReady prepares communities for severe weather - *from tornadoes to tsunamis***
- **StormReady provides community leaders and emergency managers with detailed and clear guidance on how to improve their warning and weather preparedness programs**

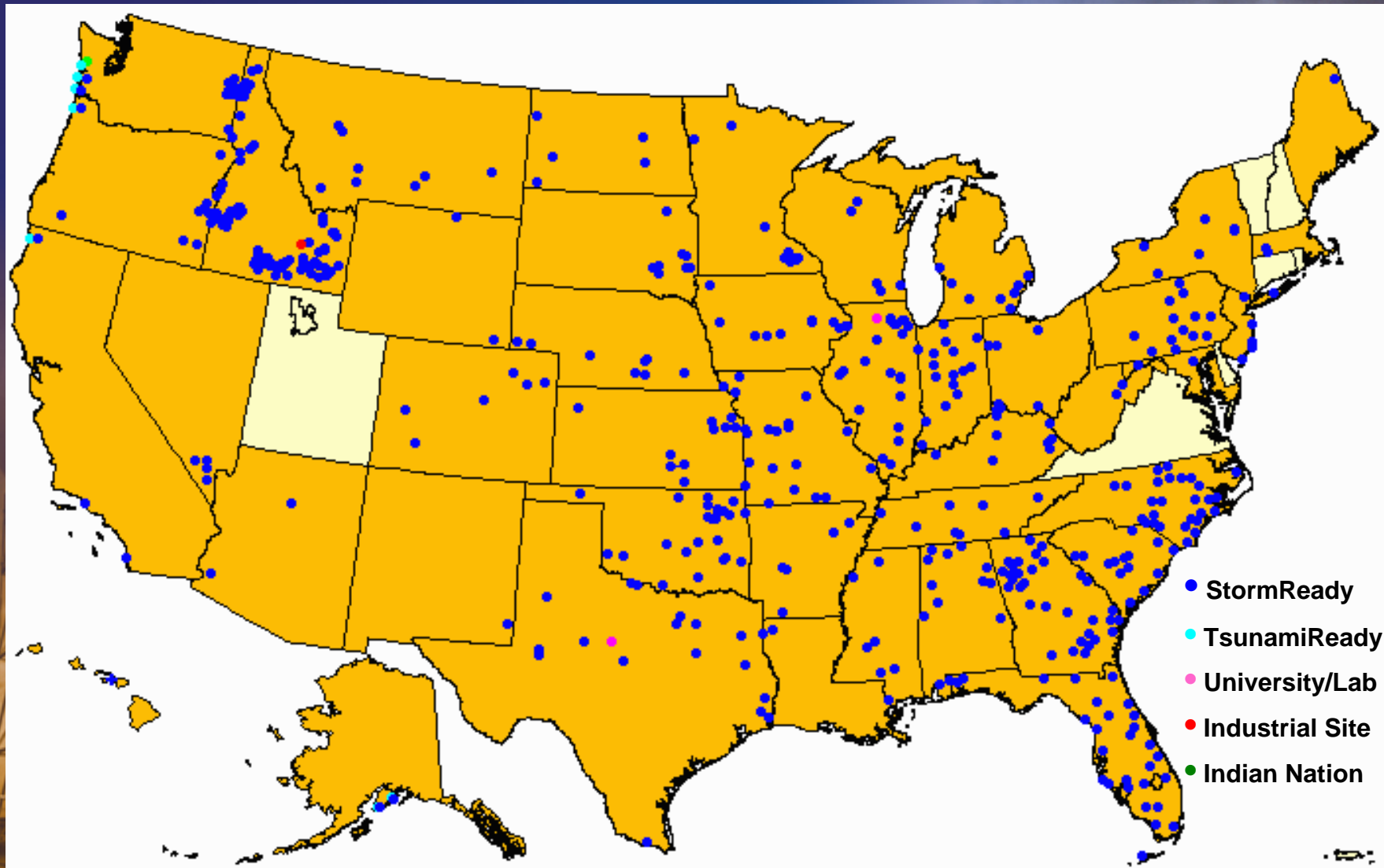
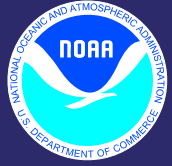




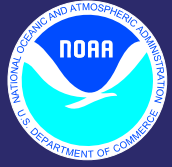
# StormReady Incentives

- **Improve timeliness of hazardous weather warning reception and dissemination for community**
- **Help local Emergency Managers justify costs of hazardous weather-related programs**
- **Provide an “image incentive” to community**
- **Encourage surrounding areas to improve their hazardous weather preparedness programs**
- **Receive 25 Community Rating System Points to possibly lower National Flood Insurance Plan premiums**

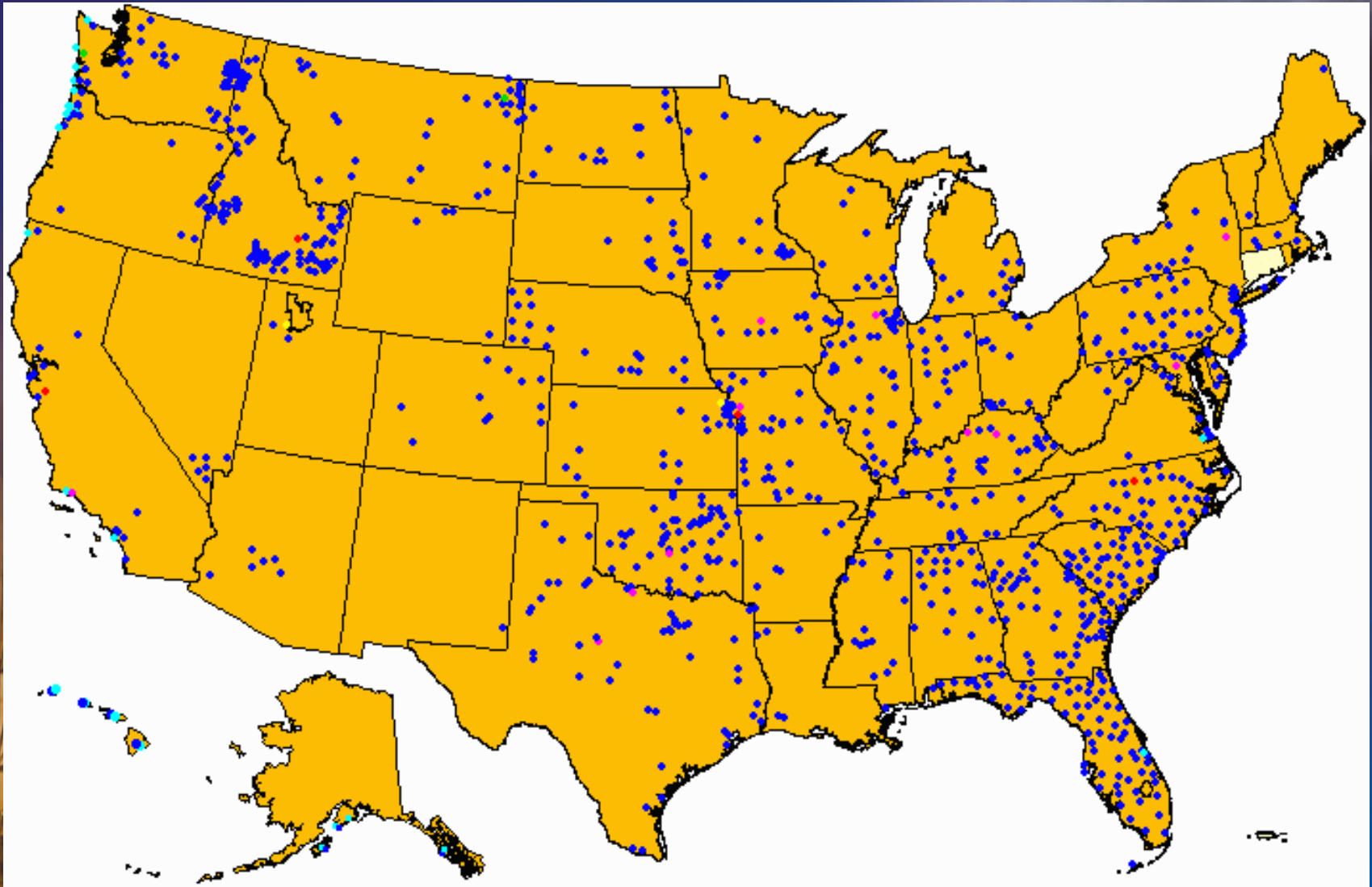
# As of February, 2003 there were 521 Storm/TsunamiReady Communities in 43 States



- StormReady
- TsunamiReady
- University/Lab
- Industrial Site
- Indian Nation



# As of January, 2006 there are over 1,000 Storm/TsunamiReady Communities in 49 States!

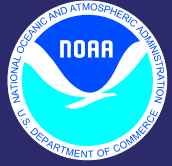




# StormReady Community Defined



- **StormReady defines “community” as a group of people within a locality that have common social and economic interests with an infrastructure that supports the communication and education role of the National Weather Service to protect lives and property**
- **“Community” includes cities, towns, universities, Indian Nations, and government and private entities**
- **“County” includes Parish**



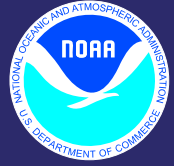
# How does a Community become StormReady?



- **Establish Communication and Coordination Plans**
  - 24-Hour Warning Point
  - Emergency Operations Center
- **Receive Critical Warning Information**
  - NOAA Weather Radio
  - NOAA Weather Wire
  - Emergency Managers Weather Information Network
  - News Media (Radio/TV)
  - Internet
  - Pagers, cell phones, etc.



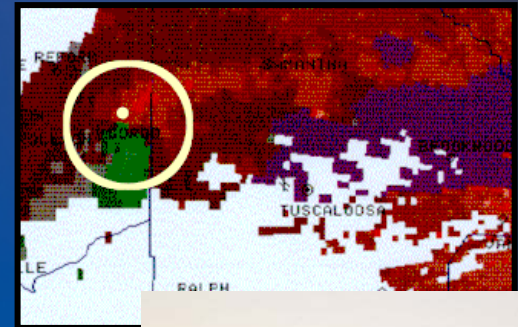


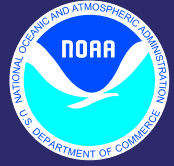


# How does a Community become StormReady? (contd)



- **Monitor Evolving Weather**
  - Weather instruments
  - River gage monitoring
  - Radar access (Internet, local providers)
- **Disseminate Warnings**
  - Emergency Alert System
  - Cable Override
  - NOAA Weather Radio in public buildings
  - Sirens
  - Other systems unique to the area



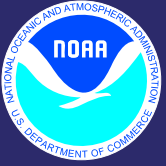


# How does a Community become StormReady? (contd)



- **Increase Community Preparedness**
  - Spotter and dispatcher severe weather training
  - Public weather safety presentations
- **Enhance Internal Operational Procedures**
  - Review of hazardous weather action plan

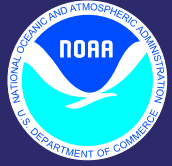




# StormReady Recognition Process



- **Community applies on-line or in writing to local NWS Forecast Office**
- **Local StormReady Advisory Board reviews application**
- **StormReady Advisory Board performs on-site verification visit to ensure all StormReady criteria are met**
- **If criteria are not met, StormReady Advisory Board suggests improvements and works with the community to implement necessary changes**
- **Once all criteria are met, a recognition Ceremony and Press Conference is held for the community**



# Successful Applicants Receive:



- StormReady recognition letter from the NWS, valid for 3 years
- Two official StormReady signs
- Authorization to use the StormReady logo
- Instructions for acquiring additional signs
- Information on how to notify FEMA for possible flood insurance rate adjustments
- Listing on the Natl StormReady web site





# StormReady Renewal Process



- **Community official receives notice that they need to re-apply 6 months prior to expiration**
- **Community official reviews original application to ensure accuracy**
- **Community official provides an updated list of any new technology or information that has been added since the initial application was signed**
- **Community official signs the application and returns it to the NWS local office, and the 3-year renewal becomes effective**

# StormReady Success Story

## Van Wert, Ohio

### F4 Tornado - 11/10/02

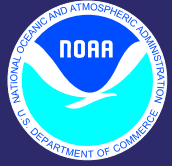


Photo courtesy Ben Waltz



Photo courtesy of Paul Van Dyke

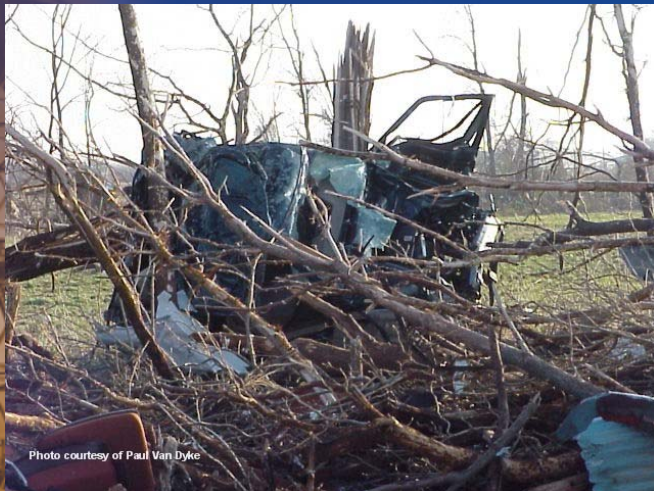
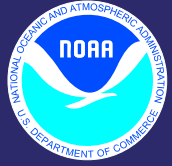


Photo courtesy of Paul Van Dyke



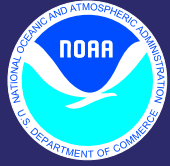
Photo courtesy of Paul Van Dyke



# **TsunamiReady**

***When Seconds Count,  
TsunamiReady  
Communities  
are Prepared***





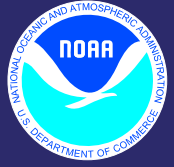
# Why do we need TsunamiReady?



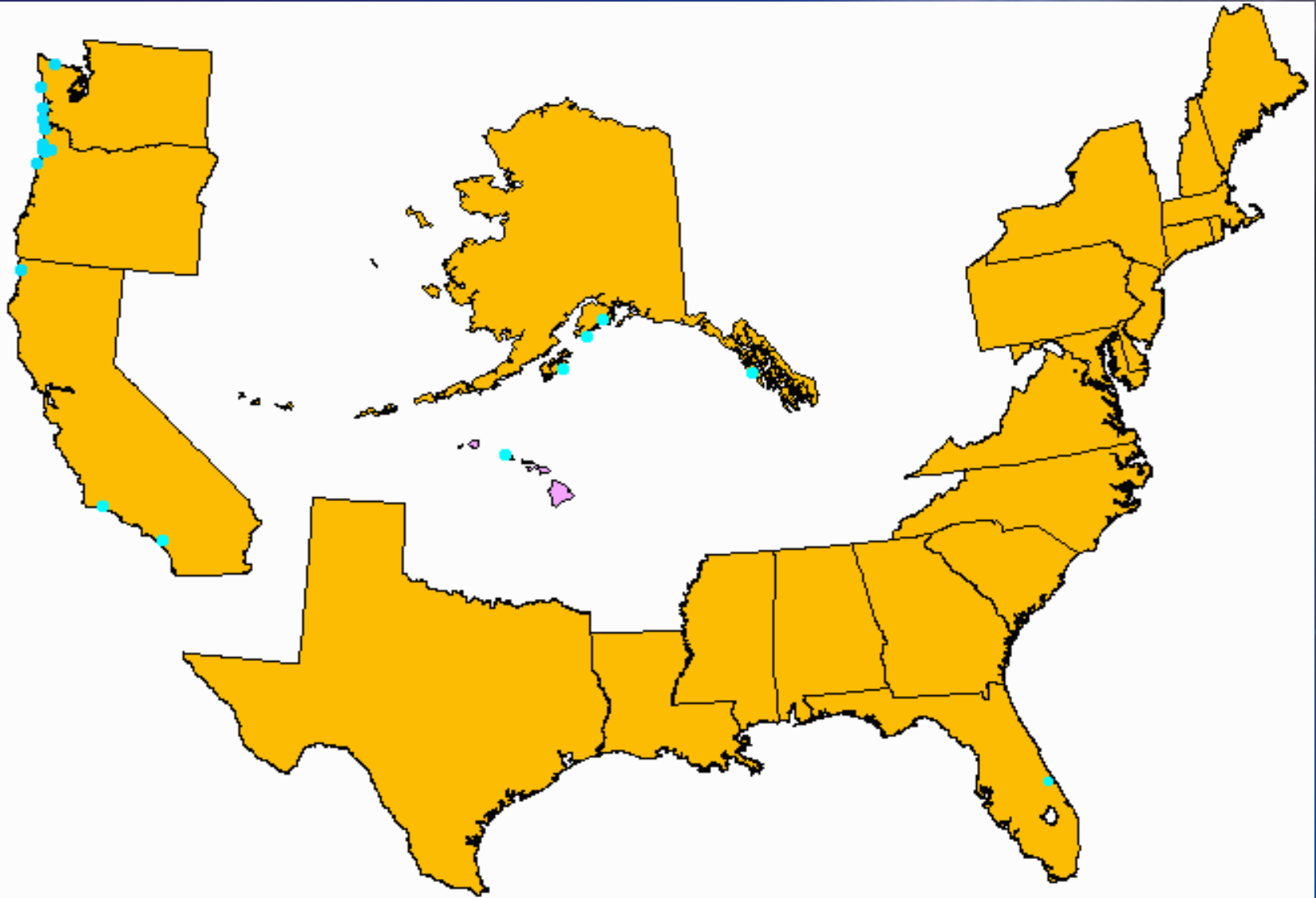
- ***The December, 2004 Indian Ocean Tsunami reminded us of the horrible devastation a tsunami can cause!***

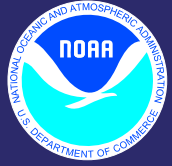






# As of January, 2006 there are 26 TsunamiReady Communities in 7 States



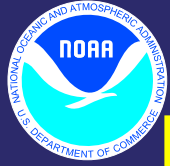


# How does a Community become TsunamiReady?



- **Establish Communication and Coordination Plan**
  - *24-Hour Warning Point*
  - *Emergency Operations Center*
- **Receive Critical Tsunami Warning Information**
  - *NOAA Weather Radio*
  - *NOAA Weather Wire*
  - *Emergency Managers Weather Information Network*
  - *News Media (Radio/TV)*
  - *Internet*
  - *Pagers, cell phones, etc.*

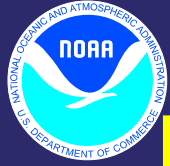




# How does a Community become TsunamiReady? (contd)

- **Increase Community Preparedness**
  - *NWS staff provide Tsunami safety presentations*
  - *Designate safe areas outside of inundation zone*
  - *Establish tsunami evacuation areas, evacuation routes, and install evacuation route signs*
  - *Provide written, locality specific, tsunami hazard response material to public*
- **Schools:** *encourage tsunami hazard curriculum, practice evacuations if located inside inundation area, provide safety material to staff and students*





# How does a Community become TsunamiReady? (contd)

- **Administrative**
  - *Develop formal tsunami hazard operations plan*
  - *Yearly meeting/discussion by emergency manager with NWS*
  - *Visits by NWS official to community at least every other year*



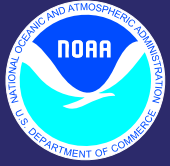
Emergency Operations  
Plan



# TsunamiReady Recognition Process



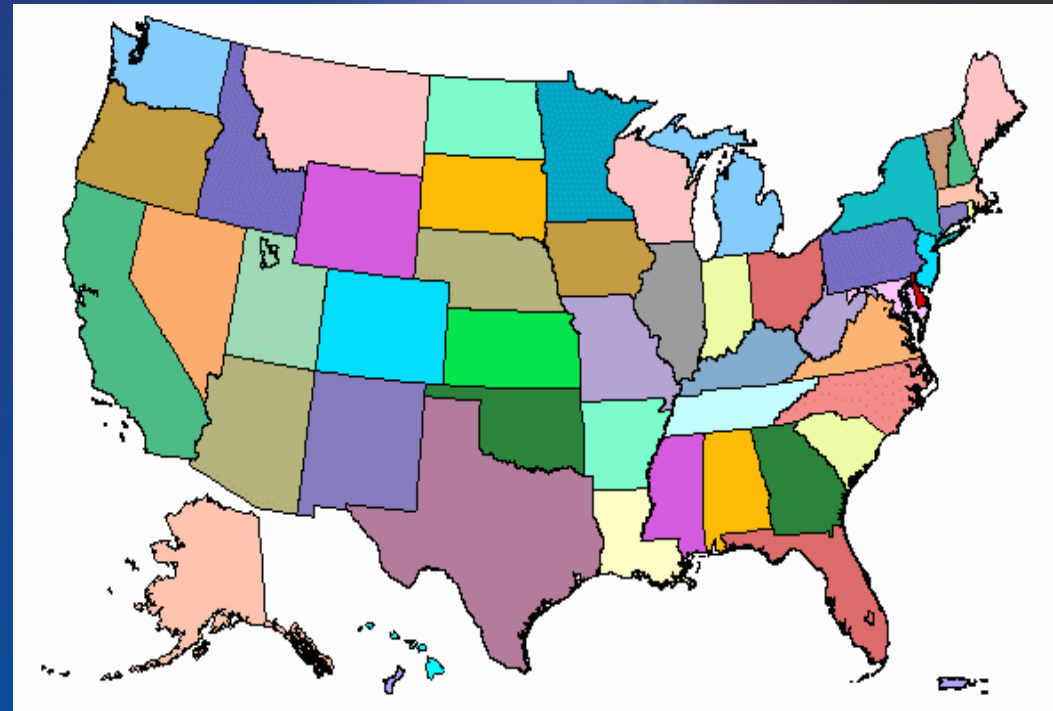
- **Community applies to local NOAA/NWS Office**
- **Local TsunamiReady Advisory Board reviews application**
- **Local TsunamiReady Advisory Board performs on-site verification visit**
- **If guidelines are not met, Local TsunamiReady Advisory Board suggests improvements and works to implement changes**
- **Once guidelines are met, a recognition Ceremony and Press Conference is held for community**

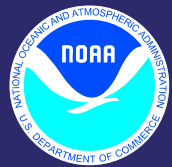


# StormReady/TsunamiReady Contact Information



- **Contact your local Warning Coordination Meteorologist by going to NWS StormReady or TsunamiReady page.**
- **Click on Local Contacts**



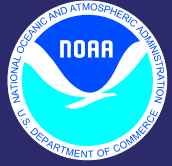


# StormReady Web Resources



- **NWS StormReady Page:**  
**[www.stormready.noaa.gov](http://www.stormready.noaa.gov)**
- **StormReady Toolkit for Emergency Managers:**  
**[www.stormready.noaa.gov/resources/toolkit.pdf](http://www.stormready.noaa.gov/resources/toolkit.pdf)**
- **NWS TsunamiReady Page:**  
**[wcatwc.gov/tsunamiready/tready.htm](http://wcatwc.gov/tsunamiready/tready.htm)**
- **NWS West Coast & Alaska Tsunami Warning Center:** **[wcatwc.gov/main.htm](http://wcatwc.gov/main.htm)**
- **NWS Pacific Tsunami Warning Center:**  
**[www.prh.noaa.gov/pr/ptwc](http://www.prh.noaa.gov/pr/ptwc)**





# Thank You!



**StormReady**  
NATIONAL WEATHER SERVICE  
**Community**

**Are You StormReady?**  
Contact your  
National Weather Service  
or  
Emergency Management Office



Safety information at  
[www.stormready.noaa.gov](http://www.stormready.noaa.gov)

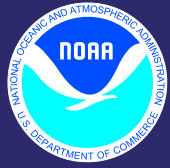
**Entering A  
TsunamiReady  
Community**



**IN CASE OF EARTHQUAKE, GO TO  
HIGH GROUND OR INLAND**







**FLOODED WORLD** shows, in light blue, the areas that would be below sea level, if the ocean surface rose by 100 meters (328 feet)



[www.theodora.com/maps](http://www.theodora.com/maps)