

Texas General Land Office Hurricane Katrina / Rita Response

J T Ewing Oil Spill Division





Department of Homeland Security
Incident Support Team

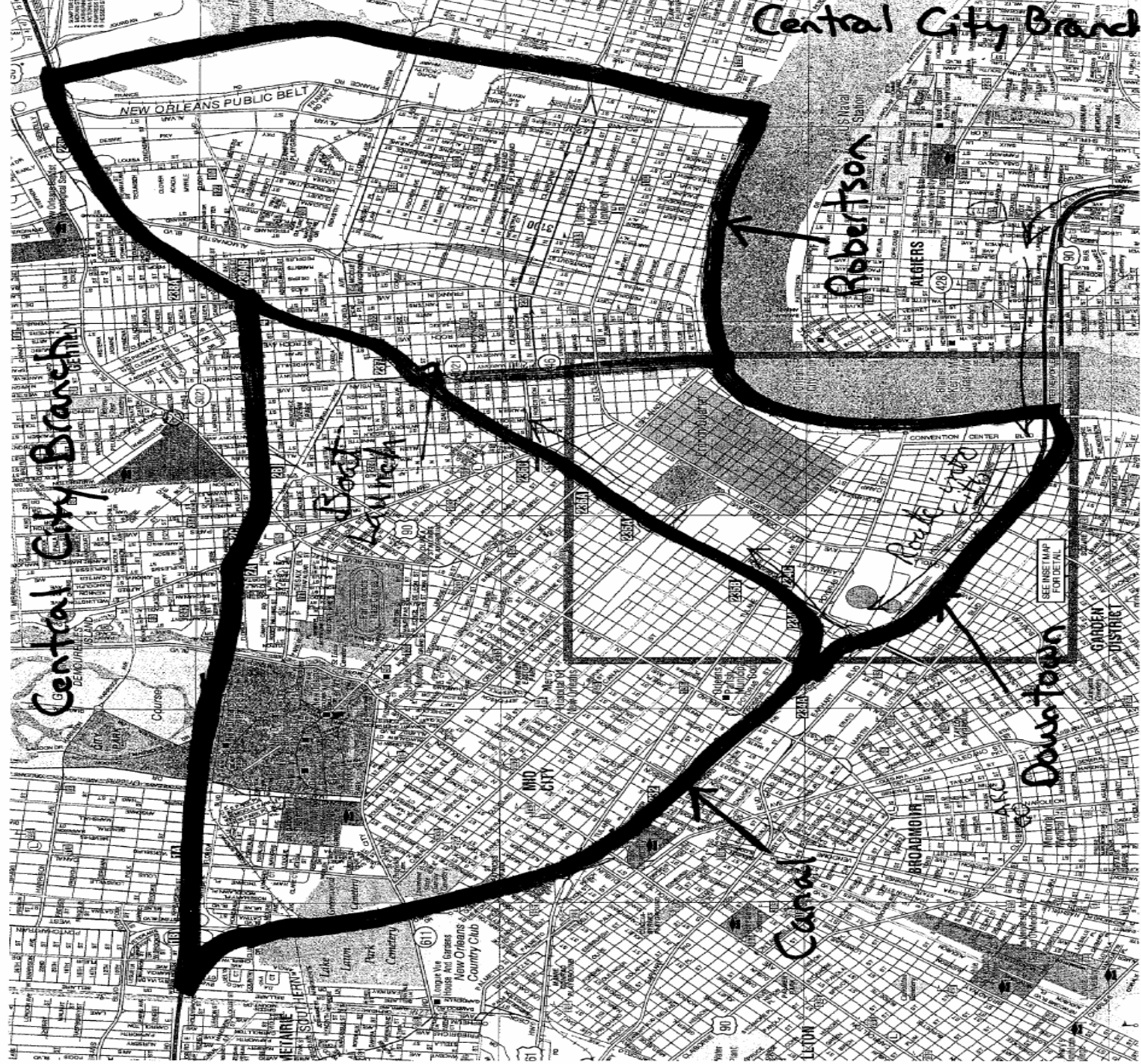


Hurricane Katrina Incident Action Plan



Operational Period: 0700 09/05/05 - 0700 09/06/05

IST Base of Operations
5800 Airline Drive
New Orleans, LA 70112
800-311-0947 (Phone)



Central City Branch

Central City Branch

Robertson

Port of Lakes

Port of Lakes

Central

Downtown

SEE INSET MAP FOR DETAIL





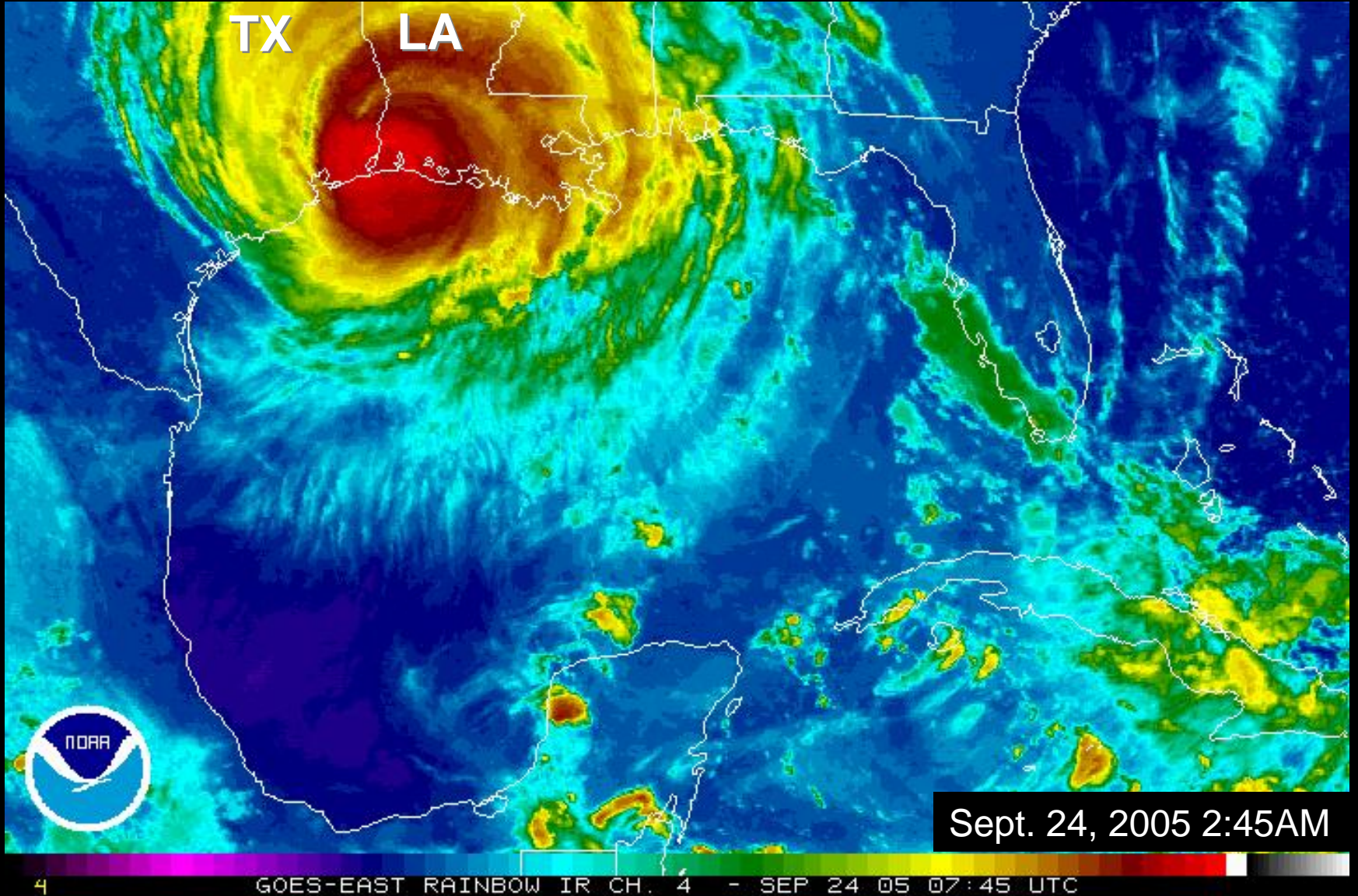












Post-Rita Response at Sabine Pass, TX

J T Ewing Texas General Land Office

Rita's Path

RITA # 33 NHC Past(solid) and Forecast(dots) Track


■ >34Kt(39mph)

■ >50Kt(58mph)

■ >64kt(74mph)

National Hurricane Center Disclaimer: 'Wind Range Contours show the maximum extent of winds expected in each quadrant. Users are cautioned that winds vary greatly within each quadrant. For quadrants extending over land and water, over-water values are used, which may make the extent of inland wind radii appear unrealistically large'





Texas General Land Office
Region 1 Head Quarters





Beaumont Area

21000 blue roofs / 4 million cubic yards of tree debris / ½ million cubic yards of tree debris left to recover.

3200 applications for FEMA trailers / 2900 approved as of Jan. 4, 2006. Working on solutions for permanent housing for SE Texas, Katrina housing issues have been solved, Rita housing issues have not.





Holly Beach

Louisiana

Holly Beach, Louisiana before and after Hurricane Rita



2004 Digital Orthophoto Quarter Quadrangle (DOQQ)

Hurricane Rita swept away the coastal community of Holly Beach, Louisiana (population: ~300). The top image shows the small fishing town in 2004 before the hurricane struck. Early on September 24, 2005, around 3:30 a.m., Hurricane Rita made landfall near the Texas-Louisiana coastal border. The bottom image, taken by the National Oceanic and Atmospheric Administration (NOAA) on September 25, 2005, reveals the damage. With the surrounding wetlands under water and roads buried by dirt and debris, little sign of the town remain.



September 25, 2005 NOAA Aerial Image

Of the 241 homes assessed by FEMA, 13 qualified for the “blue roof” program. There were 75 others that were severely damaged . . .



Sabine Pass Area



and 150 were considered destroyed, meaning that 95 percent of the homes in Sabine Pass are uninhabitable.



Barge in yard
of Sabine Pass
home, 1/2 mile
from shore.



Approximately 60 fishing vessels sunk.

11.01.2005 11:13

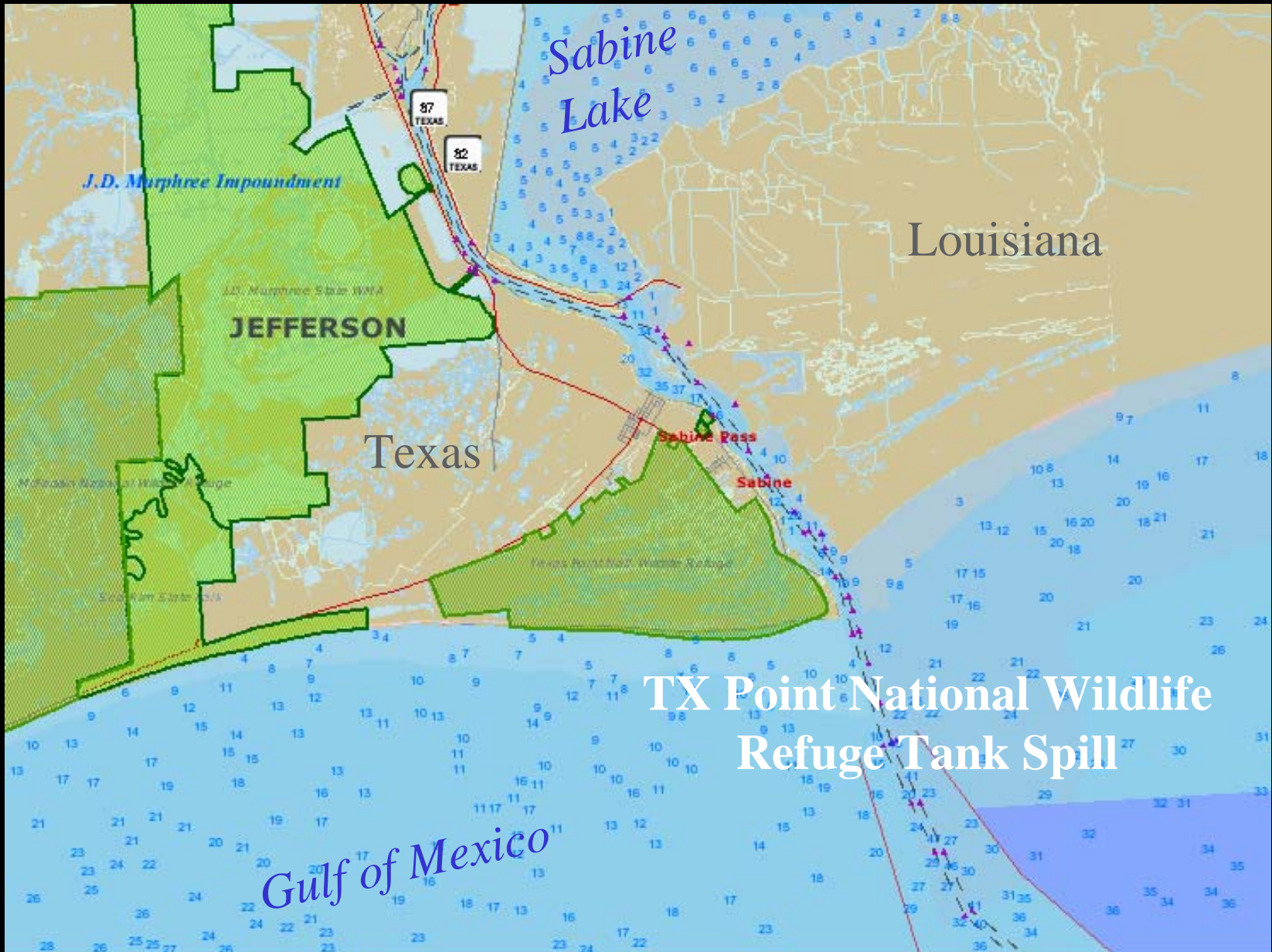




19 12:31 PM



19 5:00 PM



TX Point National Wildlife Refuge Tank Spill

diesel tank



water tank



View from the Staging Area near Sabine Offshore Services

Sabine Offshore Services

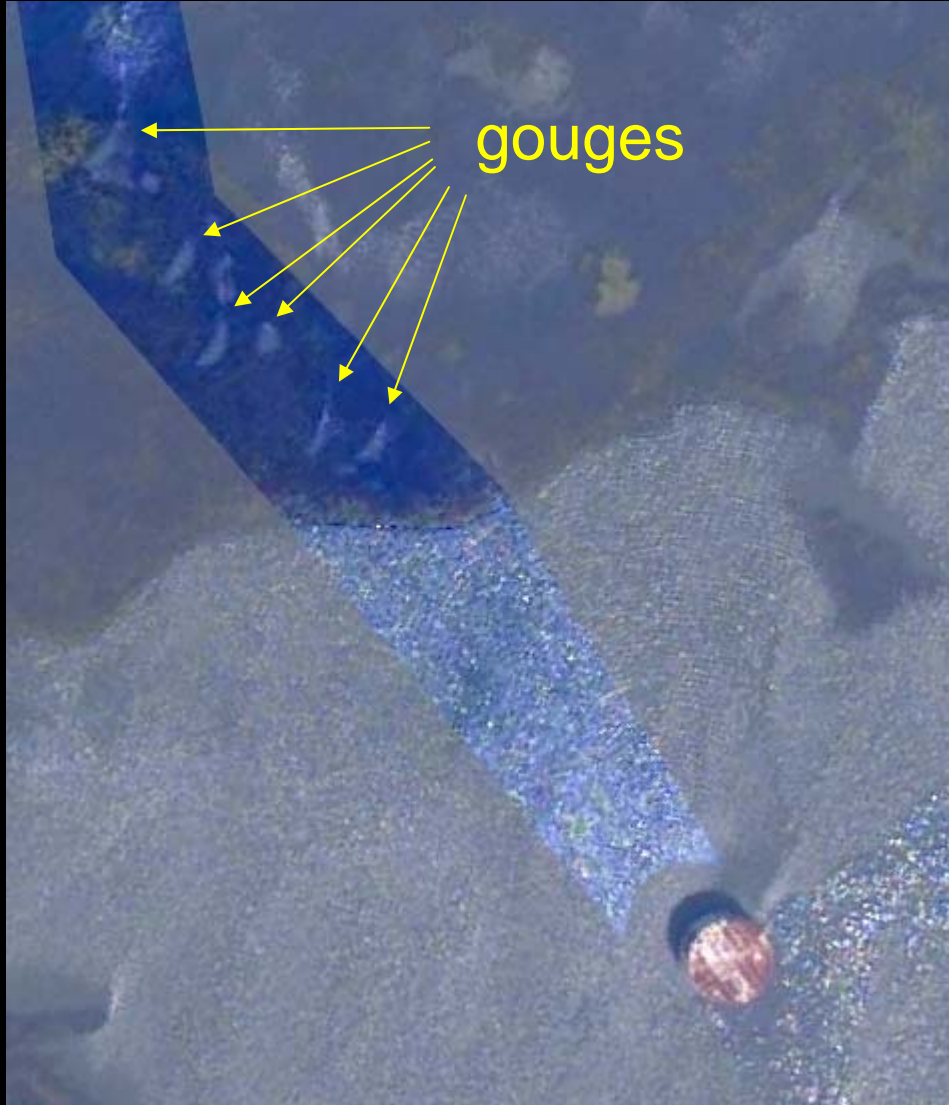


SEP 28 2005



tank →

SEP 28 2005



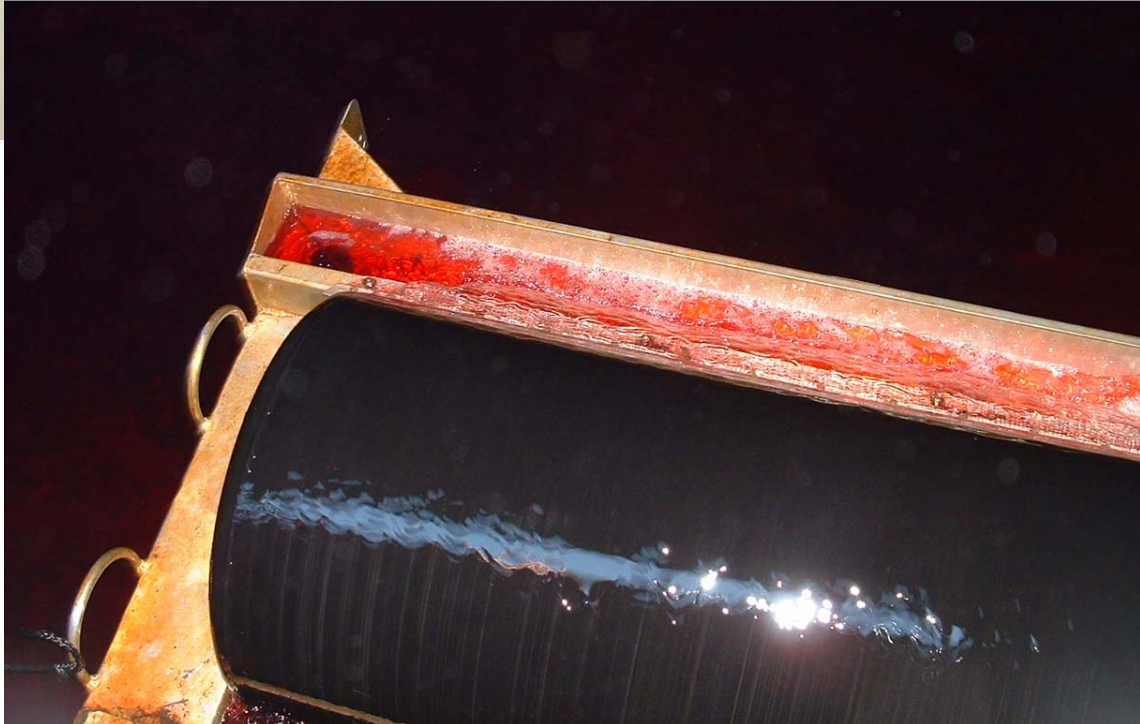
Total distance traveled = 1.5 miles

On Scene



Removing Product





An aerial photograph of a boat deck. On the left, a white diaphragm pump is mounted on a red surface. A yellow hose connects it to a green hose that runs across the deck. In the center, a large black wire cage is visible. To the right, there is a green piece of equipment with a yellow gear logo and the text 'SUN' and '12000'. Several people in work clothes are on the deck, some handling orange and red hoses. A black callout box with yellow text points to the pump.

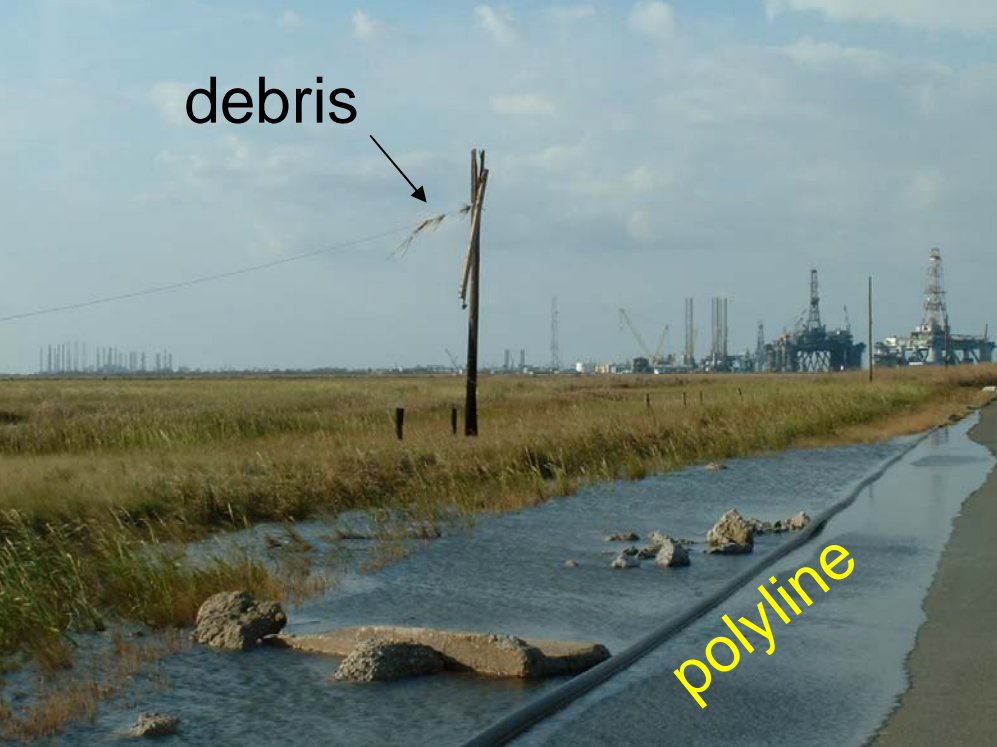
diaphragm
pump



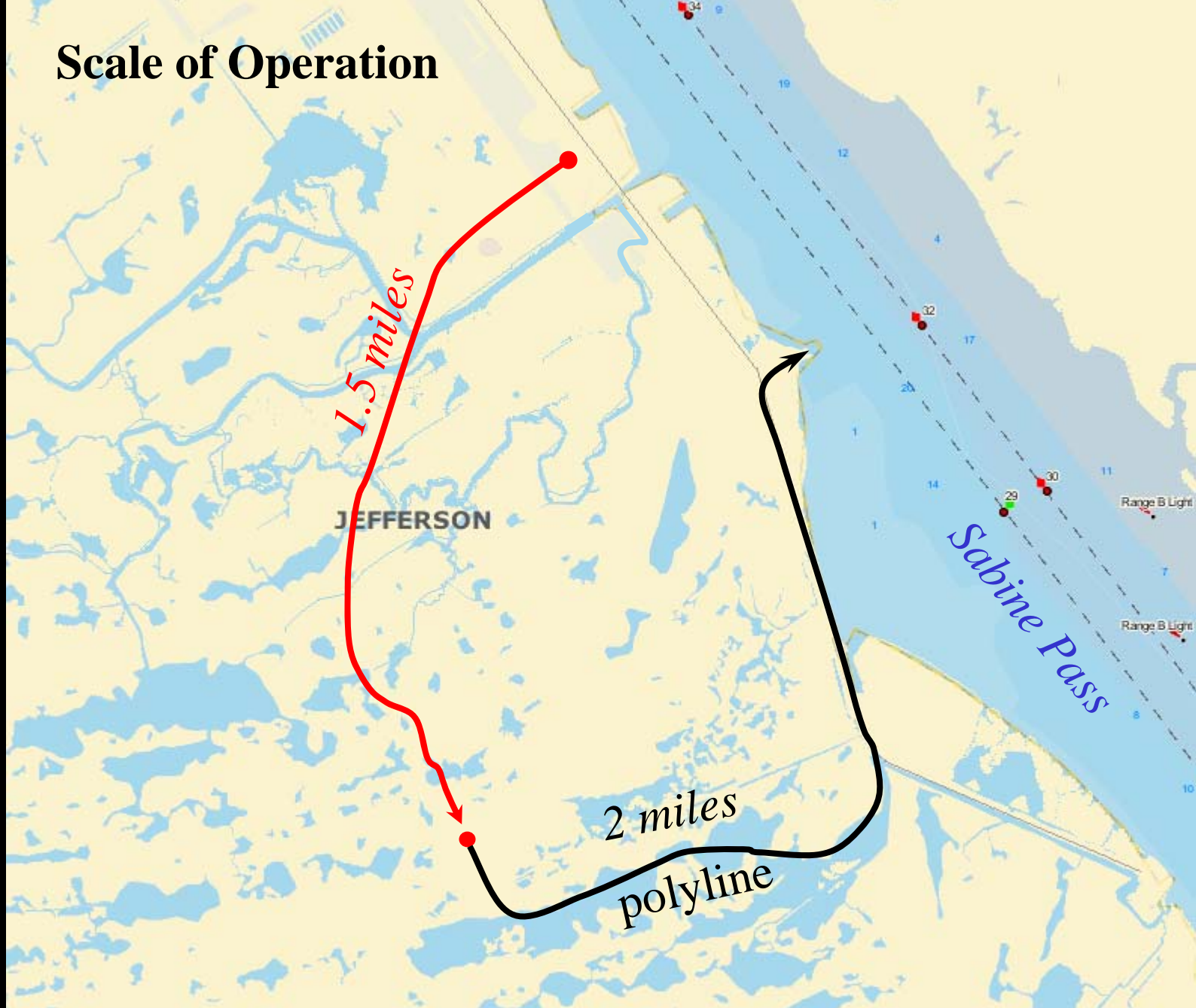
15 CM

From the tank ...





Scale of Operation



Disassembling the Tank



17 14:25





29 11:38 AM



29 10:55 AM

DBL-152

Incident





Roughly 70,000 bbls of a heavy fuel oil released.

H 270 12/26/05
912.4330, N, 09328.4363, W, 173008, A 01:44

Sustained bottom damage due to collision w/ underwater obstruction on November 11, 2005.



H 215

12/22/05

2912.3201, N, 09329.4616, W, 193008.6A 01:31

Vessel subsequently flooded, and eventually capsized upside down on November 14. Located 30 miles offshore of Cameron, LA.



48 Ft

W

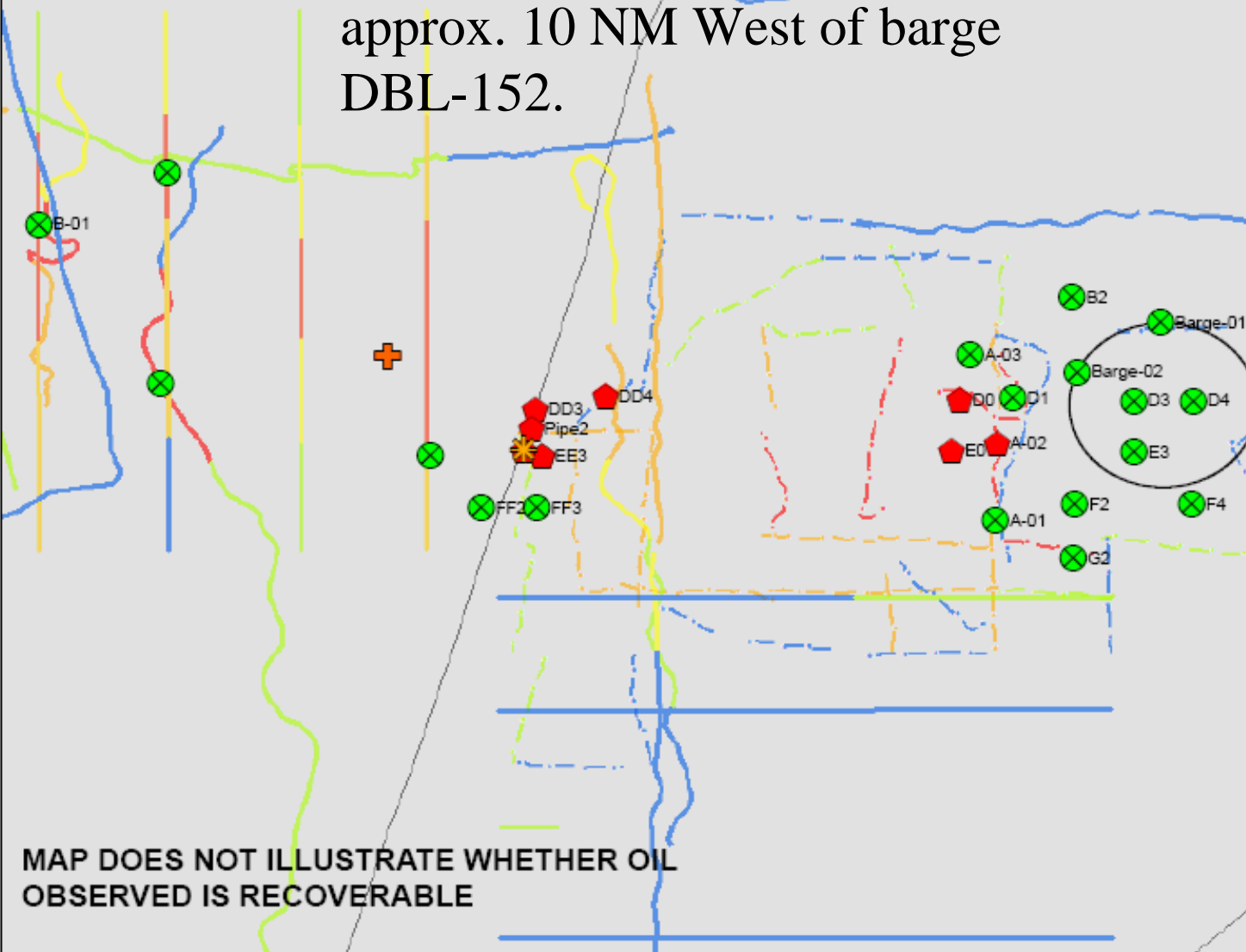
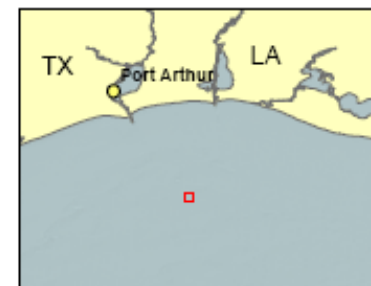
N

E

S

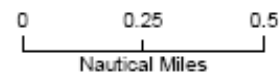
Today's Date - December 28, 2005

Submerged oil plume extends approx. 10 NM West of barge DBL-152.



Legend

- Pipelines
- ROV Observations**
 - ⊗ No Observed Oil
 - ⬠ Observed Oil
- Recovery Status**
 - ⊛ Recovery Ongoing
 - ⊕ Recovery Complete
- Area A V-SORS Oiling**
 - No Oil
 - Very Light
 - Light
 - Moderate
 - Heavy



MAP DOES NOT ILLUSTRATE WHETHER OIL OBSERVED IS RECOVERABLE

**TXA&M/TGLO
Acoustic Doppler
Current Profiler
(ADCP) Buoy**





Photo courtesy of NOAA



Approximately
2600 bbls of oil
recovered by
divers to date.

NOAA is currently
broadcasting daily fishing
advisories.



