

Energy in the Coastal Zone

- Liquid Natural Gas (LNG)
- Renewable energy – tidal, wave and wind

Gate Terminal: The Netherlands

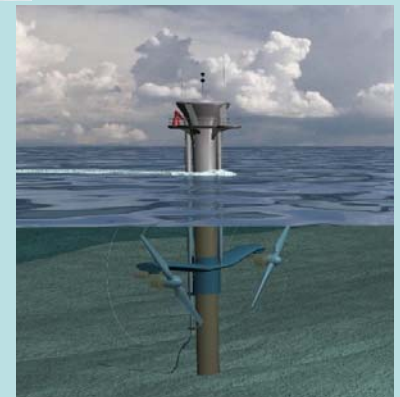
<http://www.gate.nl/en/>



Agenda

1. Technologies
2. Legal and policy issues
3. Discussion

Marine Current Turbine



Locations of Proposed Study Sites in Washington

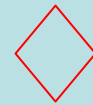


Wave Energy

AquaEnergy proposal; located 3.2 miles offshore



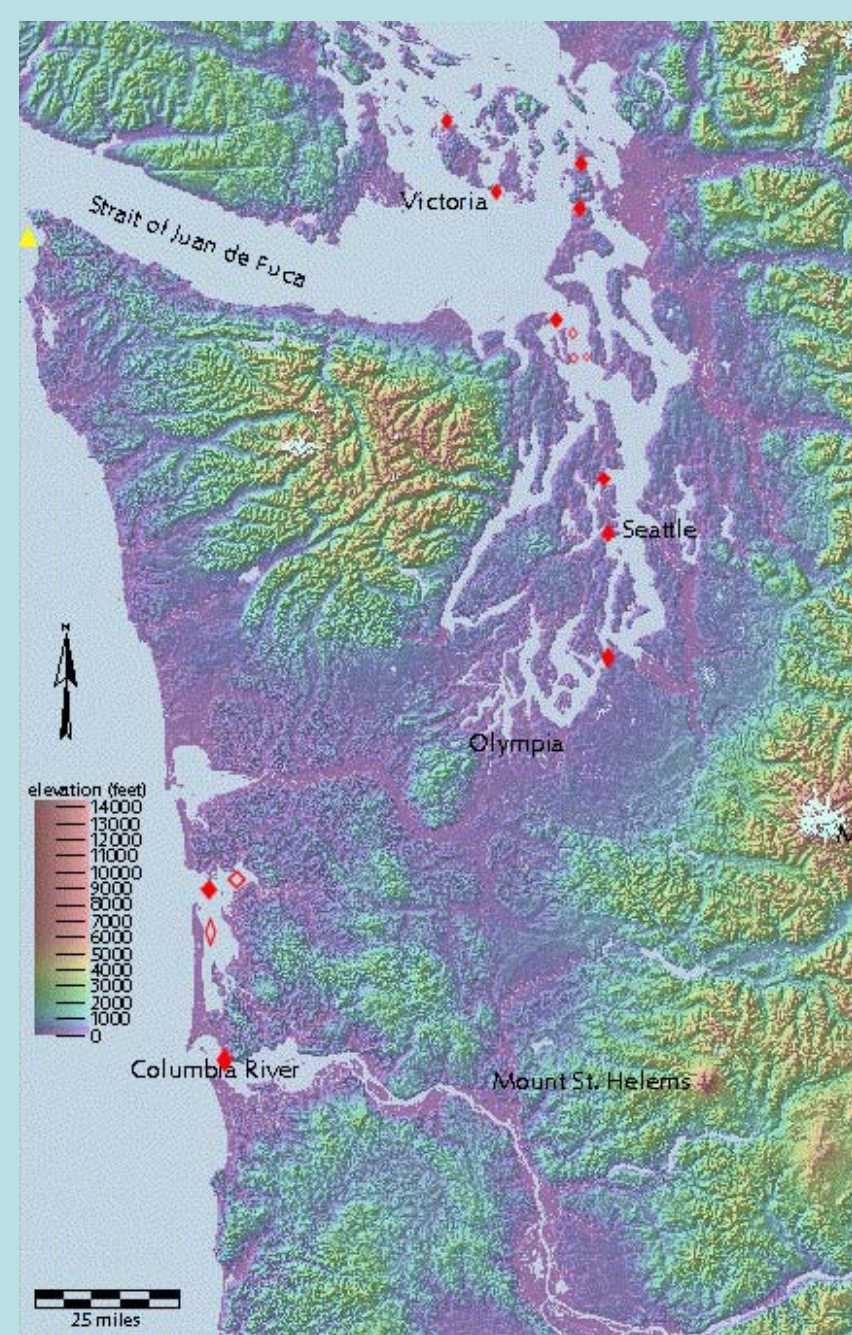
Tidal Energy



Study areas as part of a proposed site

Note: Two competing applications exist for Deception Pass (only one indicated on map).

City of Port Townsend indicated it will file a competing permit for Admiralty Inlet.



Digital Elevation Map courtesy of University of Washington & Washington State Dept. of Ecology's GIS Division