

# NOAA's National Marine Sanctuary Program



*Thunder Bay National Marine Sanctuary  
Alpena, Michigan*



Jeff Gray  
Manager





# Connecting Americans to our Great Lakes and Oceans through Maritime Heritage



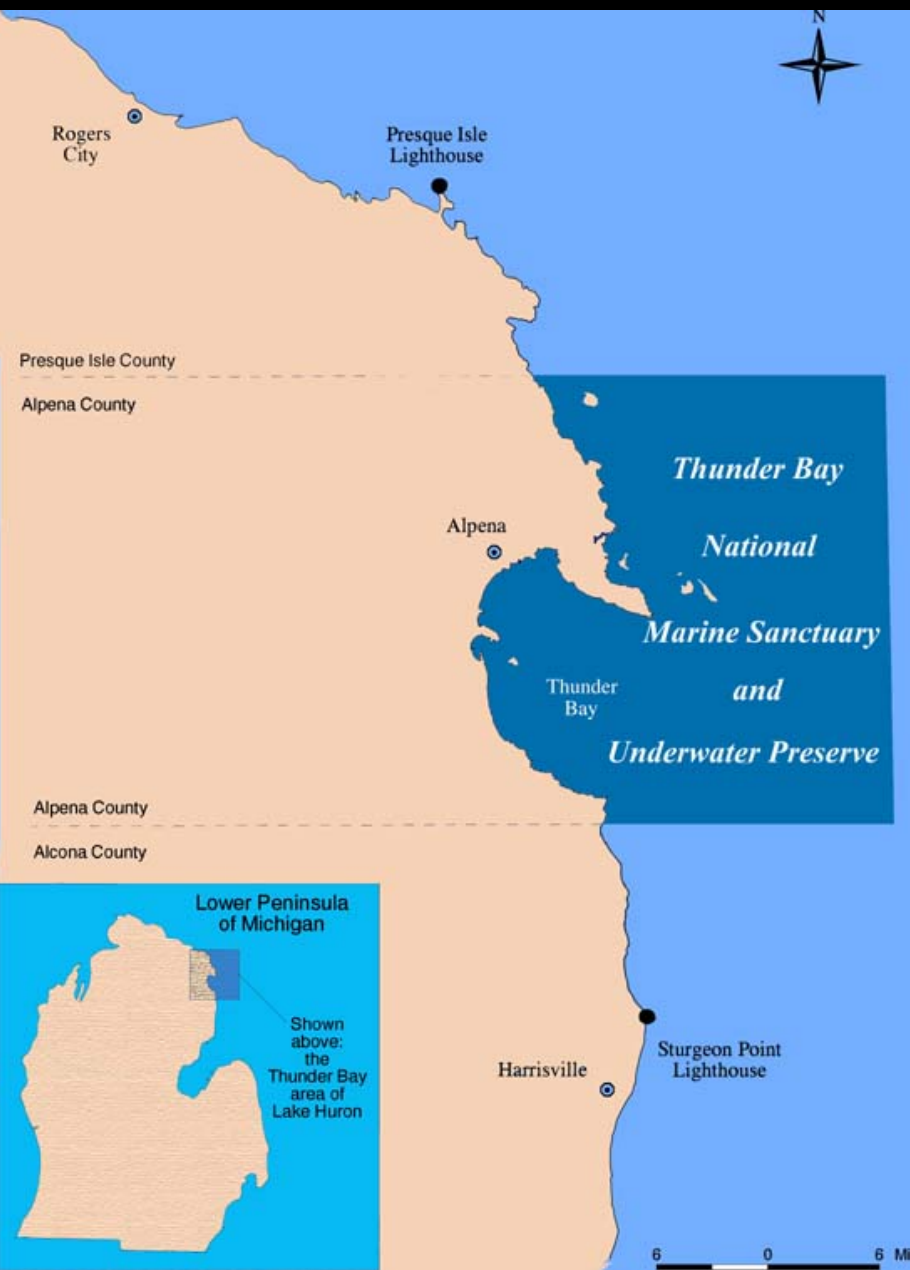


“It is probable that a greater number of monuments of the skill and industry of man will, in the course of the ages, be collected together in the bed of the ocean than will exist at any other time on the surface of the continents.”

--Charles Lyell, 1872

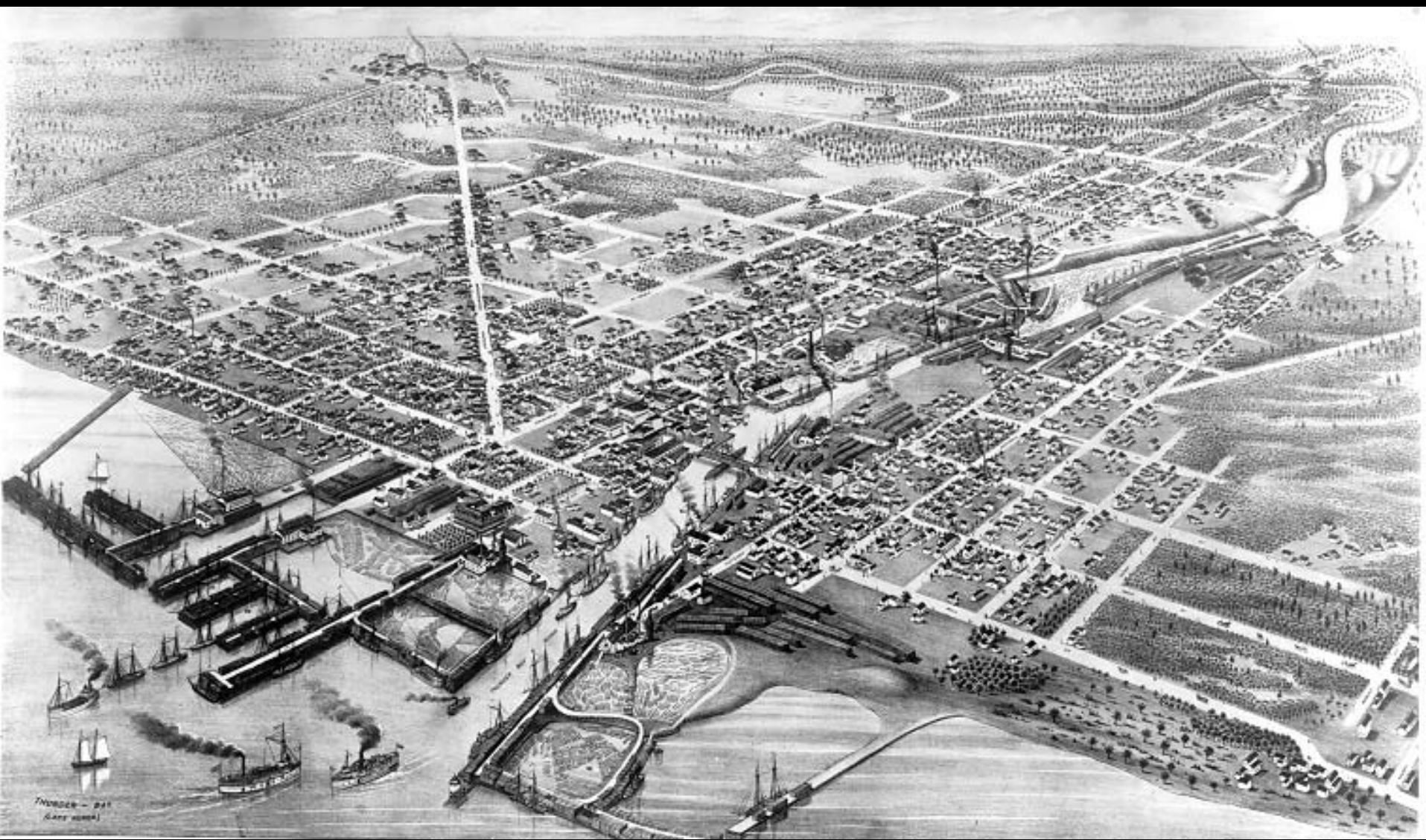


# Thunder Bay National Marine Sanctuary



- Jointly managed by NOAA and the State of Michigan
- 448-square miles
- Approximately 200 shipwrecks





7/18/50 - 21  
(1850-1851)



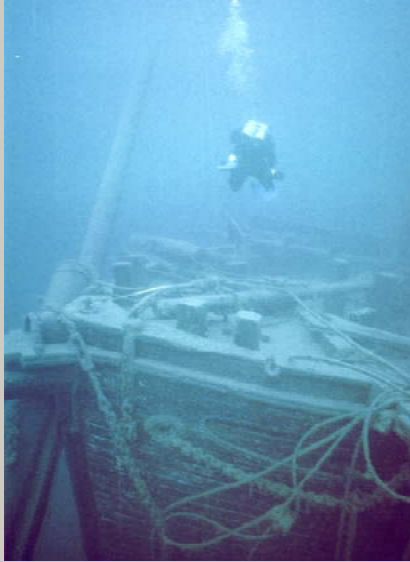
**Shipwrecks are heritage resources that have scientific, historical, educational, recreational, commercial and other values. However, they are fragile, finite and nonrenewable.**



# Accessing the Resources



# Accessing the Past: Thunder Bay Shipwreck Experiences





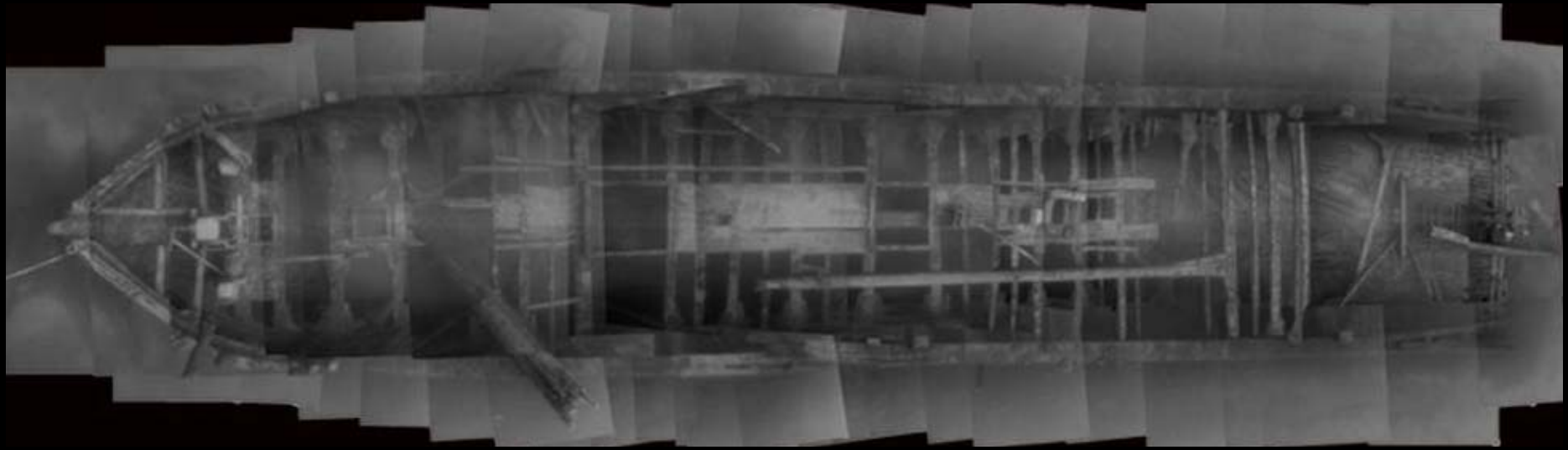


# Great Lakes Maritime Heritage Center













# Thunder Bay National Marine Sanctuary

[www.thunderbay.noaa.gov](http://www.thunderbay.noaa.gov)



National Oceanic and Atmospheric Administration  
[www.noaa.gov](http://www.noaa.gov)