

MAPTITE

Integrating Land Elevations and Water Levels for Habitat Restoration

Galen Scott / Robb Wright

March 7th, 2006



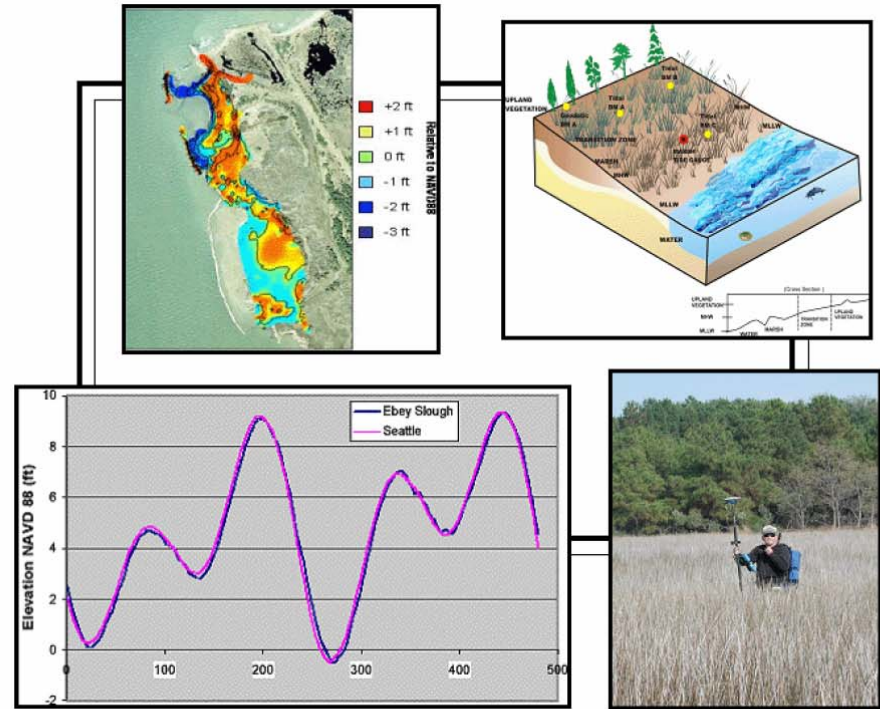
MAPTITE Supports the Methodology Described in Guidance Document from May 2004

"This document is for coastal restoration professionals ... who need to know **whether and how** to use geodetic positioning tools, water level information, and other technologies to support restoration project planning and implementation."

Addressing Elevation and Inundation Issues in Habitat Restoration Planning and Implementation

A Guidance Document

DRAFT



National Oceanic and Atmospheric Administration

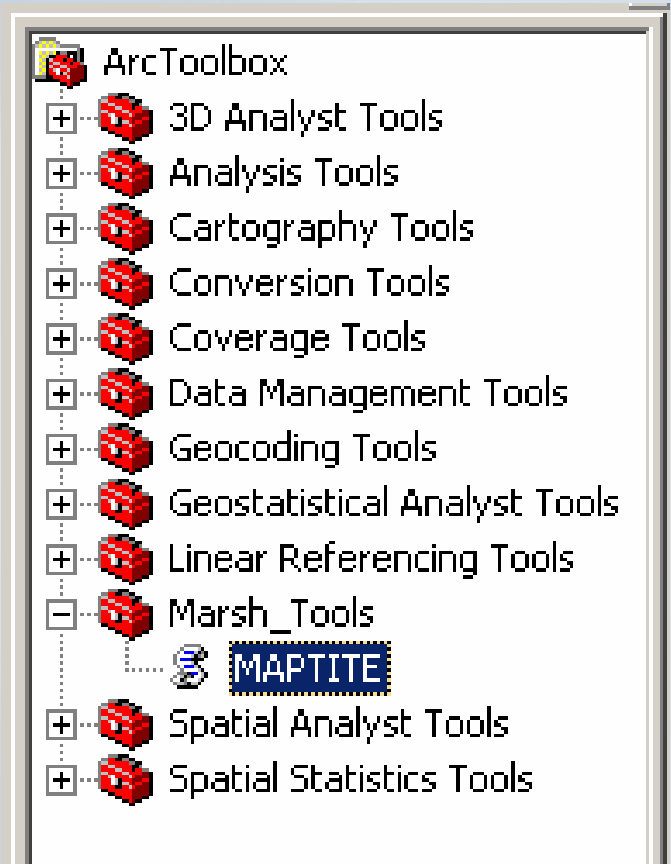
National Ocean Service

Direct comments and/or edits to Tracy Minick - Tracy.Minick@noaa.gov

<http://response.restoration.noaa.gov/cpr/library/publications.html>

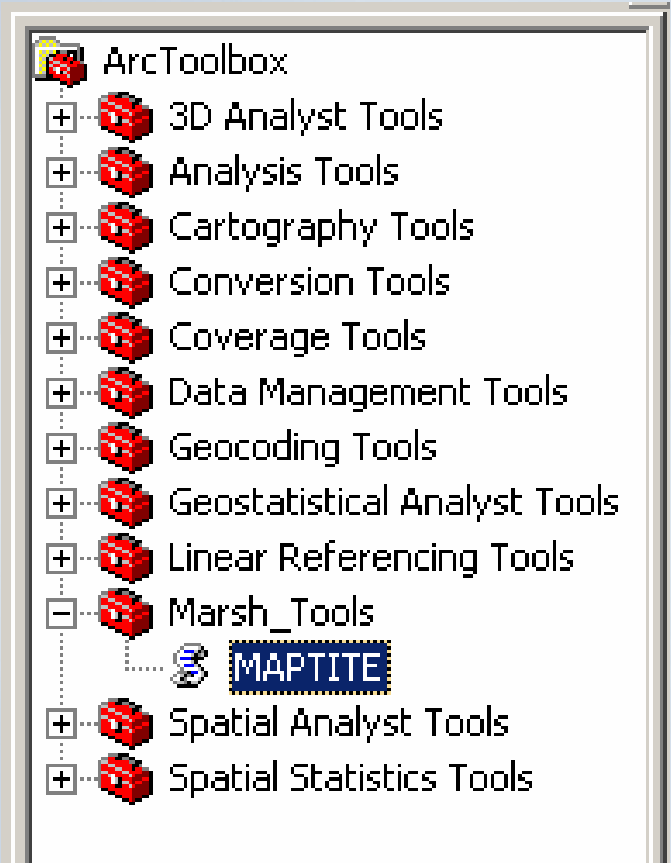
MAPTITE 0.9 - What is it?

Marsh
Analysis &
Planning
Tool
Integrating
Tides &
Elevations



MAPTITE 0.9 - What is it?

A script run from ArcToolbox to automate the process of connecting tidal datums and land elevations to produce planting zones.

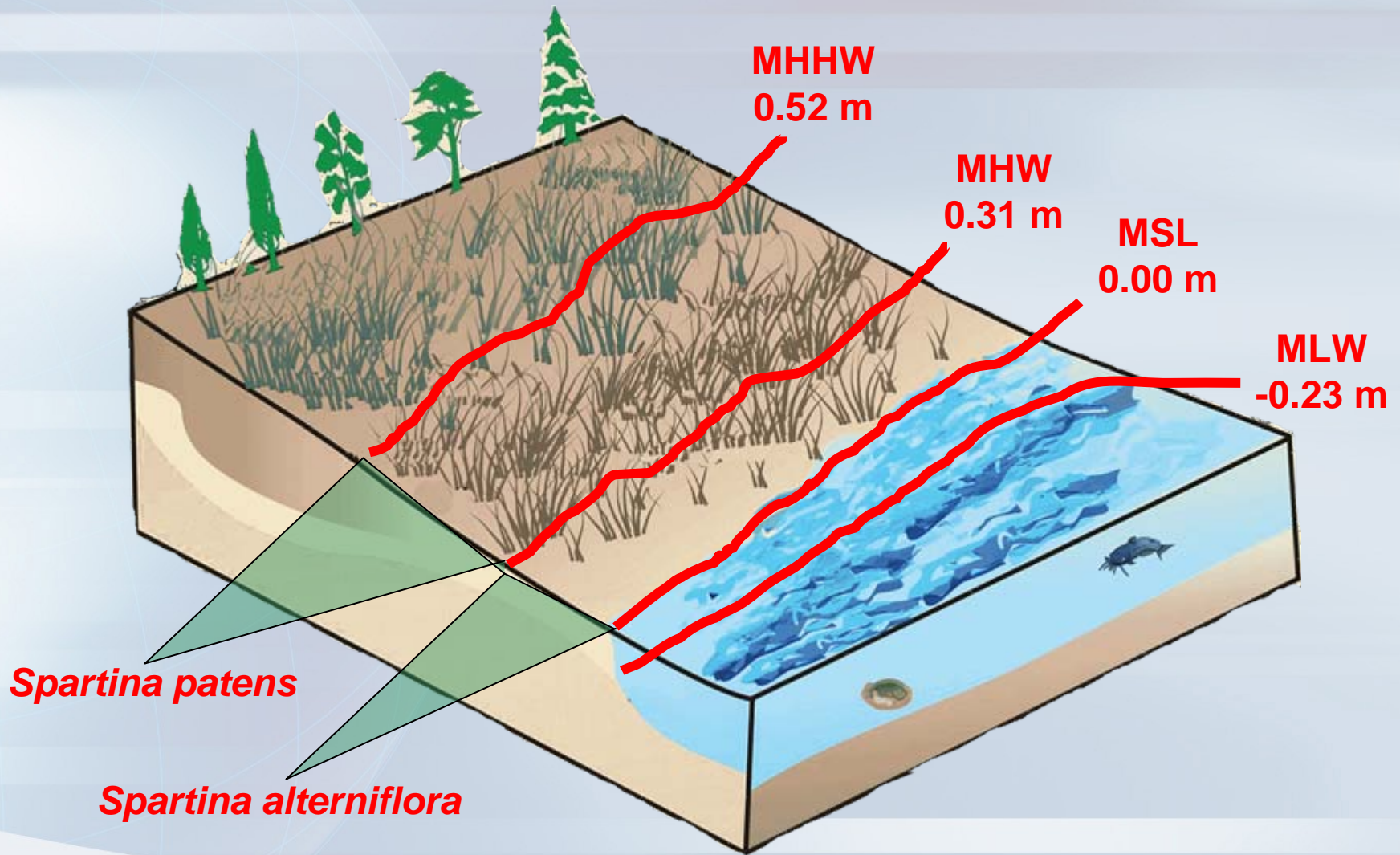


MAPTITE Partners

- **Center for Operational Oceanographic Products and Services (CO-OPS)**
 - Methodology, Tides and Tidal Datums
- **National Geodetic Survey (NGS)**
 - Elevations & Geodetic Datums
- **NOS Special Projects (SPO)**
 - ArcGIS scripting and software development
- **National Aquarium in Baltimore**
 - Restoration and plant ecology



Planting Zones by Tidal Datums



Barren Island Study Site



Methods of Analysis

- **Biological Analysis**

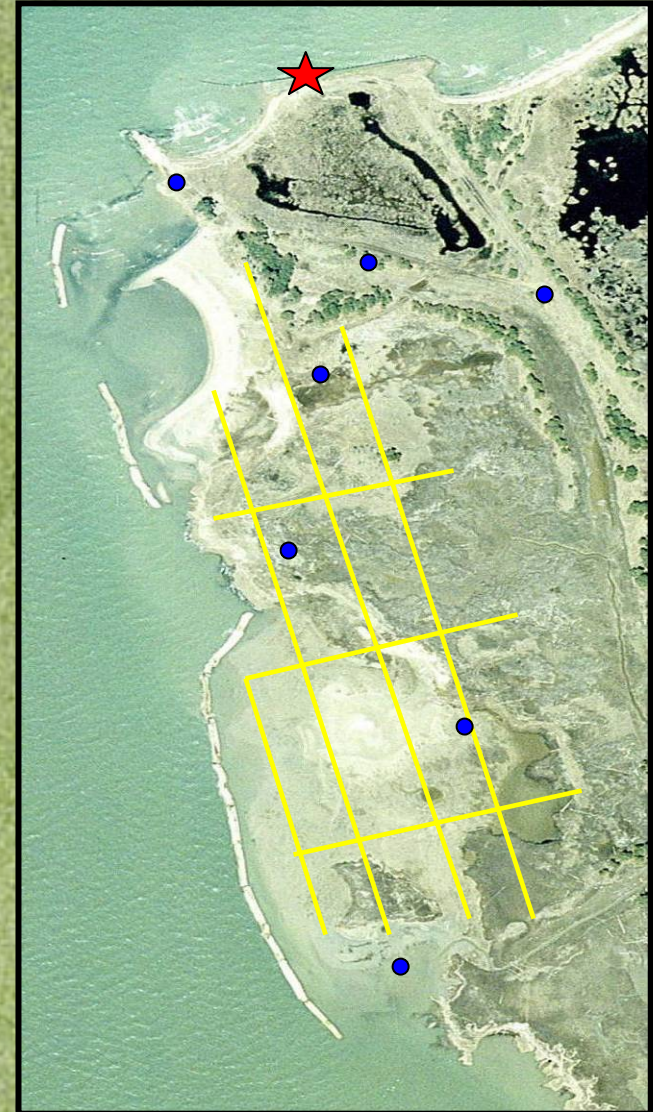
National Centers for Coastal Ocean Science
& National Aquarium in Baltimore

- **Geodetic Analysis**

National Geodetic Survey

- **Tidal Analysis**

CO-OPS



Geodetic Analysis



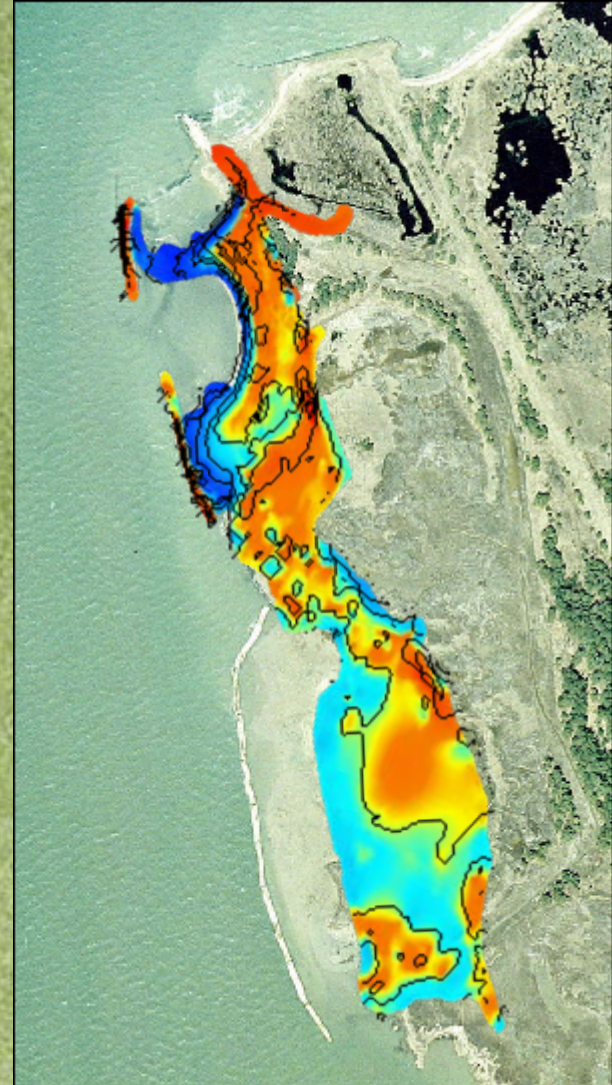
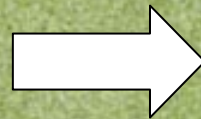
Deep-rod bench marks
installed for vertical stability

Height Mod survey to connect
benchmarks to reference frame

Kinematic GPS overlaid on
the aerial photo



Geodetic Analysis



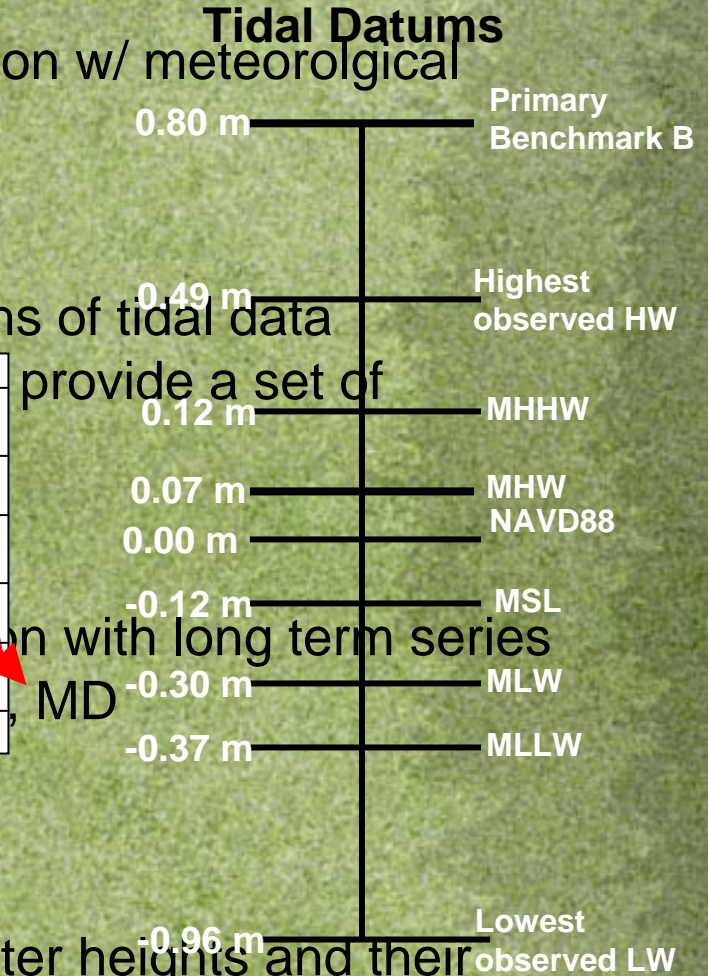
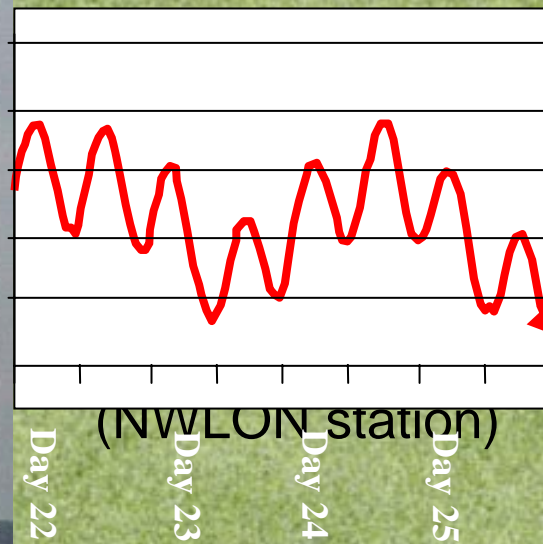
Digital Elevation Model
(DEM)

Tidal Analysis



- Pressure Tide station w/ meteorological sensors

- Collected 10 months of tidal data



provide a set of

on with long term series

- Determine high water heights and their frequency and duration of inundation relative to the marsh surface

Based on 10 months of tidal data from 1/2002 – 2/2003

Inputs to MAPTITE

- **Digital Elevation Model**
 - Vertical adjustment to MSL
- **Tidal Datum Elevations**
 - MHHW, MHW, MSL, MLW, MLLW relative to NAVD88
- **Plant Species Data**
 - Elevation ranges and plant spacing



MAPTITE Outputs

- **ArcGIS project file**

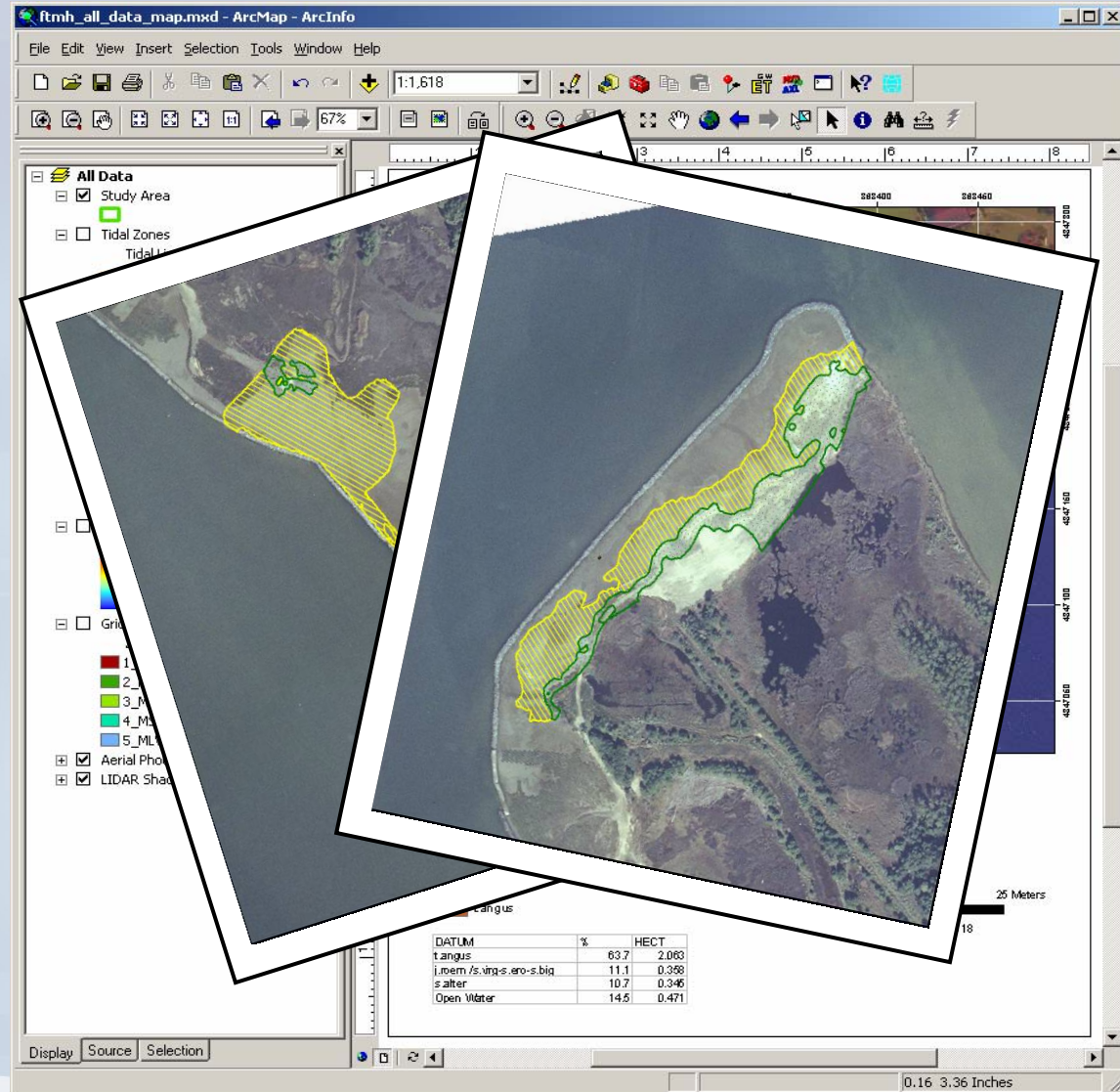
- contains the generated layers

- **Tidal Zone isolines**

- Area statistics for tidal zones

- **Planting Zones for each vegetation species**

- Individual layers and overlapping zones
- Area statistics for planting zones



Need to Calibrate and Validate

- MAPTITE is available for beta testing.
- Need to work with partners to collect elevations, tides, and plant species distribution data at reference sites and compare to model output.
- Will test different elevation data collection and DEM production methods to best match actual natural species distributions



Contact Info:

Elevations & Geodetic Datums:

Galen Scott - NGS

Galen.Scott@noaa.gov

(301) 713-3198 x131

Tides and Tidal Datums:

Kristen Tronvig – CO-OPS

Kristen.Tronvig@noaa.gov

(301) 713-2877 x 155

Methodology & Data Interpolation:

Craig Martin – CO-OPS

Craig.Martin@noaa.gov

(301) 713-2877 x 133

ArcGIS and Technical Questions:

Robb Wright - SPO

Robb.Wright@noaa.gov

(301) 713-3000 x 118

