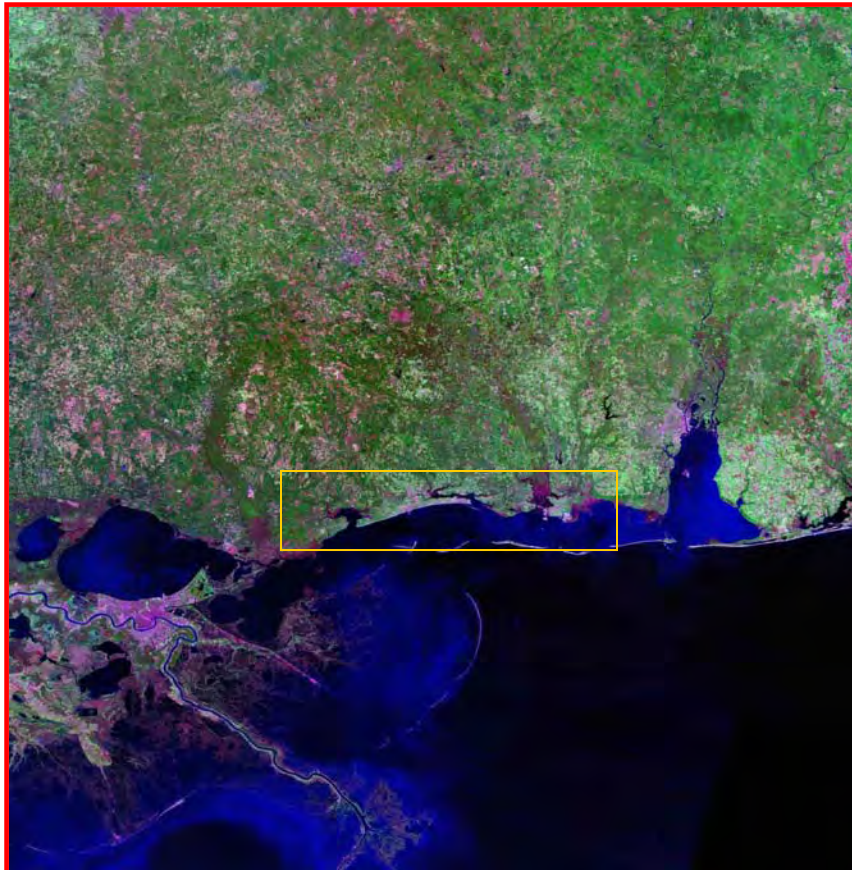




Mississippi Coastal Improvements Program



- Comprehensive Planning to Address
 - Hurricane and Storm Damage Reduction
 - Salt Water Intrusion
 - Shoreline Erosion
 - Fish and Wildlife Preservation
 - Other Water Related Resource Projects
- Cost Effective Projects in lieu of NED benefits
- No Incremental Benefit-Cost Analysis
- Report requirements
- Compatible with State Coastal Restoration Plan
 - Breakwater structures for surge protection
 - Deer Island restoration to pre-1900 footprint
 - Barrier island restoration to pre-Camille conditions
 - Restoration of 10,000 acres of coastal marshes, beaches, and forests
 - Restoration of historical water flow to coastal watersheds, including diverting freshwater from Louisiana
 - Submerged aquatic vegetation restoration
 - Oyster reef restoration and enhancement



Construction – MsCIP Interim Projects



PROJECT	APPROP AMOUNT	SCHED AWARD	STATUS
Bayou Caddy	\$5,450,000	Apr 09	Surveys complete, design nearly complete. 6 month for T&E Consultation after design
Hancock County Beaches	1,300,000	Nov 08	Reevaluate need for project due to existing dune growth
Hancock County Streams	5,800,000	Apr 09	Draft design complete, Some RE required. Construction to coincide with Bayou Caddy
Jackson Marsh	2,780,000	Jul 08	In Construction
Clermont Harbor	1,190,000	Jul 08	In Construction
Downtown Bay St. Louis	29,000,000	Nov 08	Significant RE effort in progress, design complete 05 June 08
Cowand Point	3,700,000	Aug 08	In Construction
Long Beach Canals	23,950,000	TBD	Survey complete. Hydro modeling and Significant RE effort in progress
Harrison County Dunes	13,420,000	Nov 08	Planting scheduled late winter/early spring
Courthouse Road	360,000	NA	Construction Complete
Shearwater Bridge	1,150,000	Aug 08	In Construction
Gautier Streams	4,570,000	TBD	BCOE in progress. Significant RE effort in progress
Pascagoula Beach Boulevard	7,310,000	May 09	Design complete, T&E coordination underway
Upper Bayou Casotte	1,470,000	TBD	Survey completed 30 Apr. Hydro modeling and Significant RE effort in progress
Franklin Creek Floodway	6,320,000	TBD	RE in process. Construction/demolition to follow RE acquisition
TOTAL	107,700,000		



Comprehensive Plan Elements



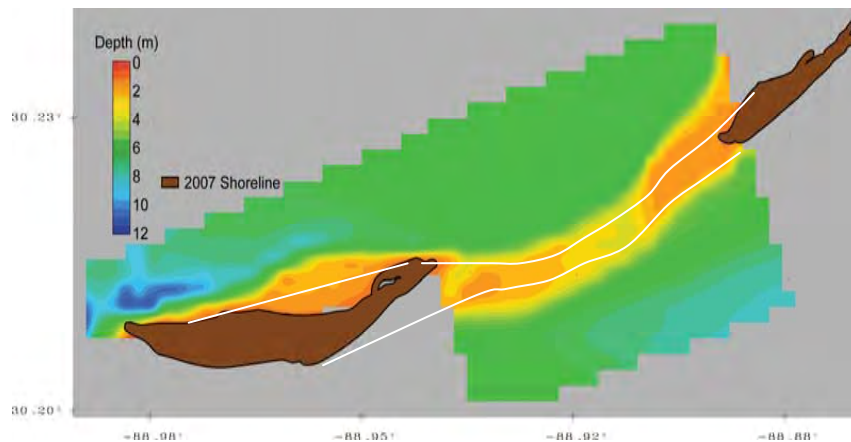
- Other Government Entity Responsibility
- Barrier Island Restoration
- Homeowner's Assistance and Relocation Program (HARP)
 - Near Term – High Risk Properties
 - Long Term – Standing Authority for Future Disaster Events
- Moss Point Municipal Relocation Project
- Waveland Floodproofing Pilot
- Forrest Heights Levee
- Coastal Forest and Wetland Restoration
- Coast-wide Beach/Dune Restoration
- Submerged Aquatic Vegetation Restoration
- Freshwater Diversion
- Other



- Critical components of Comprehensive Plan
 - Hurricane Risk Reduction Education
 - Hurricane and Storm Warning System
 - Hurricane Evacuation Planning
 - Flood Plain Management
 - Building Codes
 - Zoning Codes
 - Long-term Critical Infrastructure / Facility Relocation
- Coordination required among all parties – Federal, State, Local, Academic, NGOs



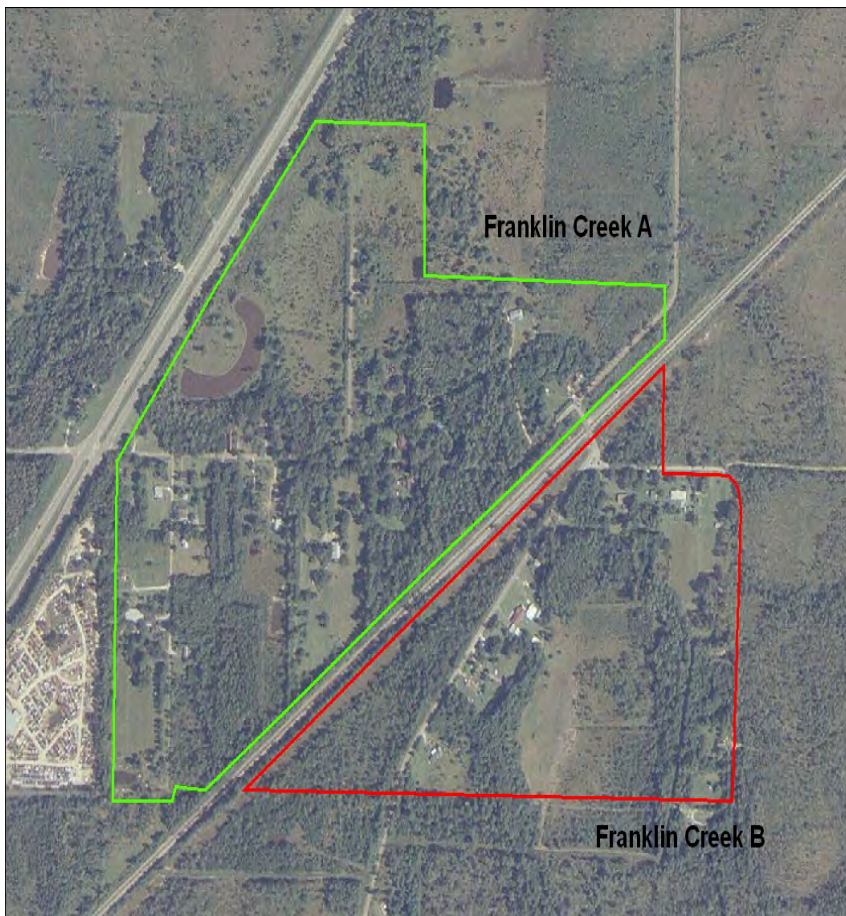
Barrier Island Restoration



- Coastal erosion reduction
- Mississippi Sound benefit
- Advanced Engineering & Design
 - Modeling
 - Sediment budget
 - Environmental surveys
 - Sand search
 - NEPA supplement
 - Cat Island study
- Preliminary Plan
 - Ship Island Cut – 13 M cy
 - Dog Keys Pass – 5 M cy
 - Petit Bois Pass – 4 M cy
- St. Bernard Delta (45 miles SE); BWT disposal areas, Ship Island Pass Shoals
- Significant coordination – NPS, USGS, NMFS, FWS, MMS, EPA



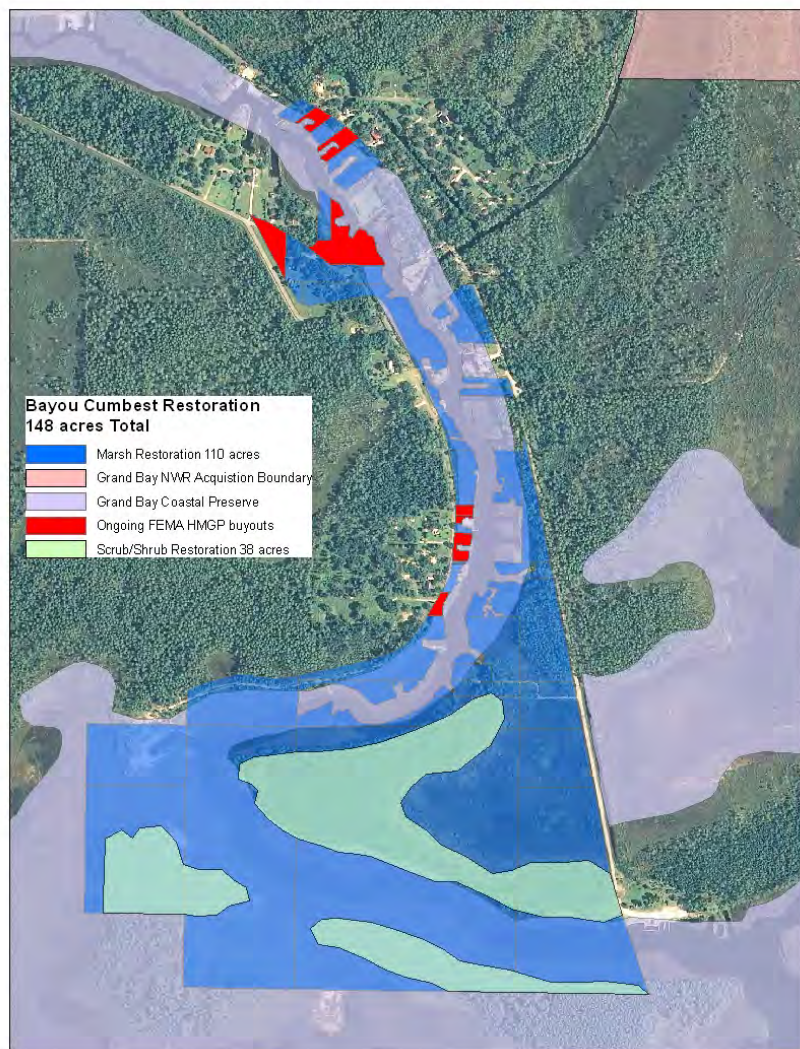
Coastal Forest - Wetland Restoration



- Franklin Creek (149 ac)
 - Adjacent to Grand Bay NWR
 - Land acquisition part of Interim project
 - Fill ditches, excavate roadbeds and additional fill, add culverts under railroad embankment, remove exotics and undesirable understory by controlled burn and mowing
- Restore natural hydrology and vegetation
- Provide storm water storage capacity
- Required coordination – FWS, DMR



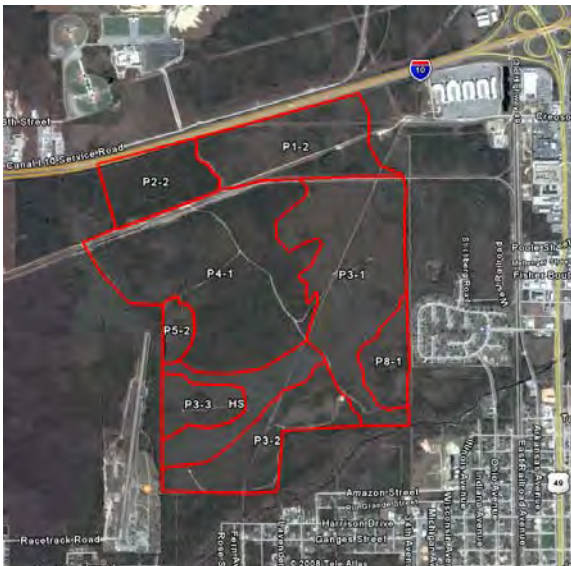
Coastal Forest - Wetland Restoration



- Bayou Cumbest (148 ac)
 - Tidal stream
 - Residential development repetitively damaged
 - HMGP – ongoing in red
 - Excavate old fill, fill artificial ditches, removal of exotics, plant native vegetation
- Restore 110 acres tidal wetlands and manage 38 acres of scrub/shrub
- Restore connectivity between habitats
- Coordination required – FWS, DMR



Coastal Forest - Wetland Restoration



- Turkey Creek Watershed
 - Currently undeveloped but prime land (900 ac)
 - Acquire and restore 689 ac (south parcels) to wet pine savannah
 - Remove roads & other fill, fill drainage ditches, remove exotics and undesirable understory by controlled burn and mowing
- Restore habitat
- Increase flood storage capacity
- Required coordination – FWS, DMR



Coastal Forest - Wetland Restoration



- Admiral Island (123 ac)
 - Ditched and filled in the 1960s for future development
 - Coastal Preserves Program 2006
 - Fill ditches: remove fill, debris, and exotic species; plant wetland vegetation
- Restore 62 acres of emergent wetland, manage 61 acres shrub/scrub habitat
- Provide storm surge buffer
- Coordination required – FWS, DMR



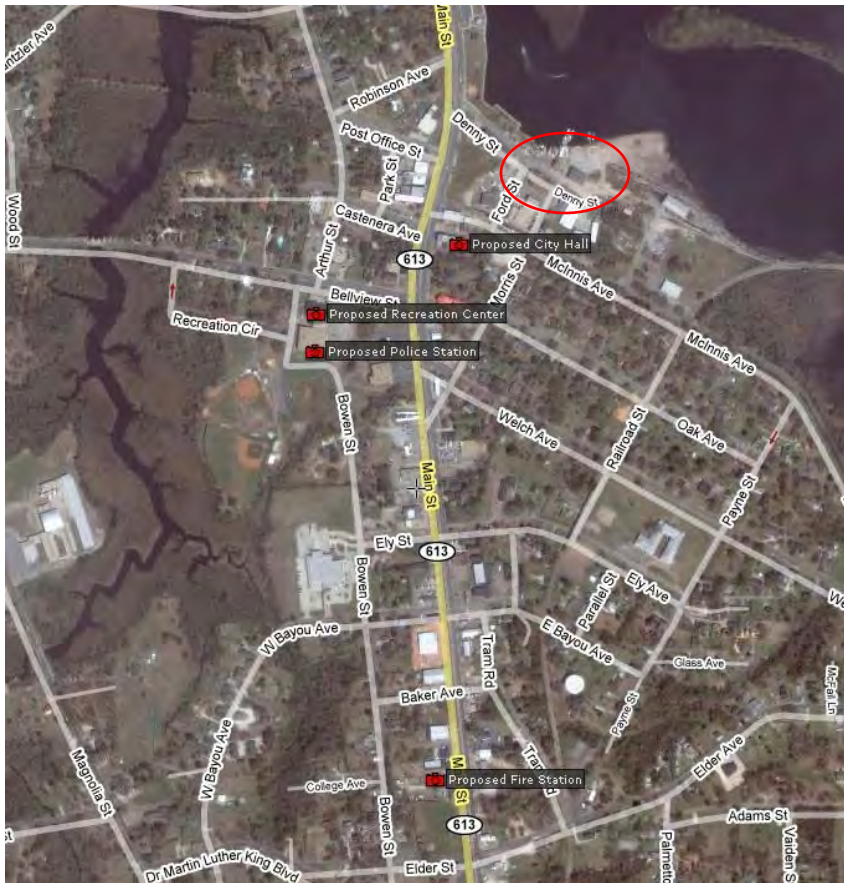
Freshwater Diversion



- Violet, LA – authorized in WRDA 2007
- Coordinated effort – LA & MS, MVN & SAM, FWS, NMFS, EPA
- AE&D – Establish diversion goals and criteria, modeling, finalize design, complete NEPA documentation



Floodproofing & Relocation Projects



- Moss Point Municipal Complex
 - Relocate municipal buildings outside high hazard zone
 - Restore flood buffer potential to current location
 - Reduce interruption of public services
 - Fully coordinated with local municipality
 - Required coordination – FEMA, HUD, MDA



Floodproofing & Relocation Projects



■ Waveland Floodproofing Project (25 structures)

- Contiguous area, acceptable for floodproofing, structures still present
- Apply new standards
- Evaluate FEMA 550 design guidelines
- Demonstrate techniques to stakeholders
- Required coordination – FEMA, HUD, MEMA, MDA



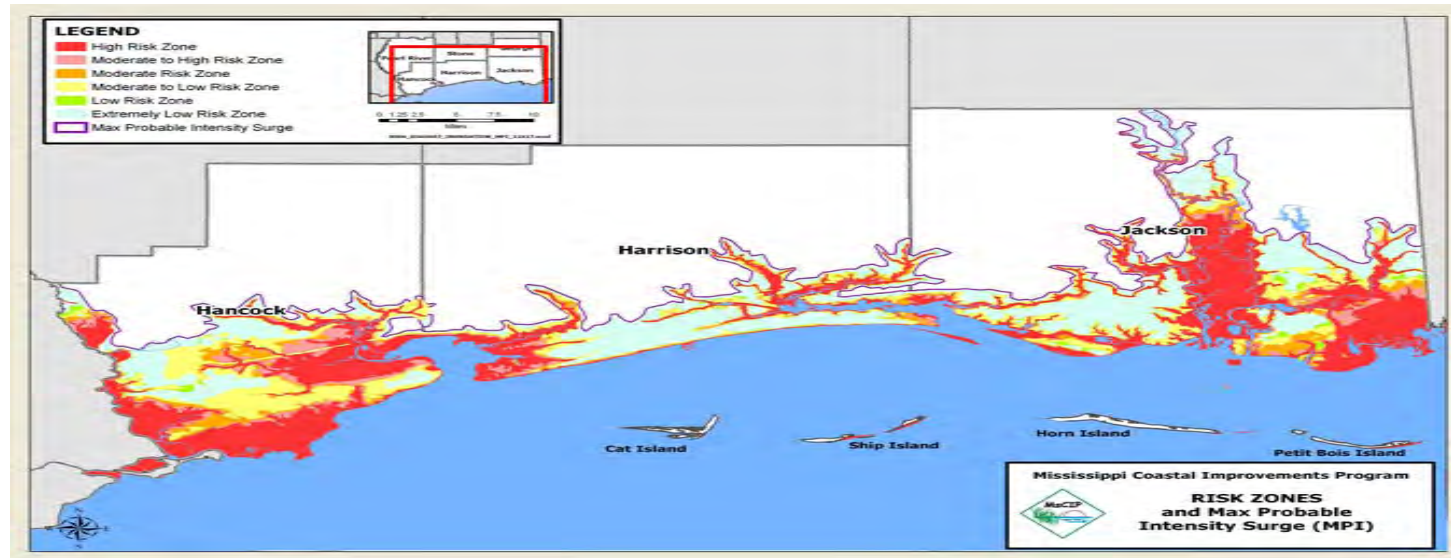


Forrest Heights Levee



- Gulfport (west Hwy 49)
- Existing levee overtopped
- Levee improvement
 - Culturally significant community
 - NRCS rebuilding levee to pre-storm condition (not to required standard per NFIP)
 - Provide protection to between 100 – 250 year level
 - Combination earthen levee / concrete flood wall
 - Incorporating aesthetic / noise control aspects
- Coordination required – NRCS, FEMA

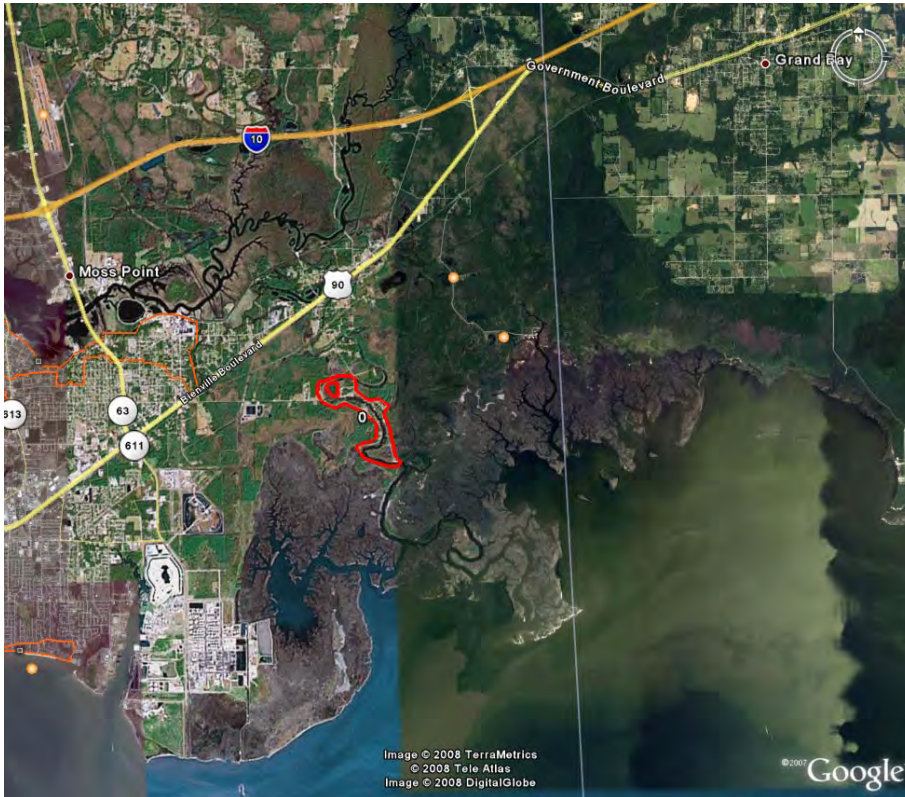
Homeowner Assistance and Relocation Program



- Near Term
 - Voluntary Program
 - Approximately 2000 parcels, VE zone
 - Coordinated with local municipalities
 - Future reuse for economic benefit
- Long Term
 - Additional planning and coordination
- Required coordination with FEMA, HUD, NRCS, NPS, State, Local



Other



- Escatawpa River diversion
 - Adjacent to Grand Bay NWR and NERR
 - Flows disrupted by US Hwy 90 and CSX RR
- At least 33 other sites identified for coastal forest – wetland restoration
- Flood damage reduction for major population centers (ring levees)
- Required coordination - EVERYBODY



Report Completion Schedule



<u>DATE</u>	<u>MILESTONE</u>
February 2008	Draft Report/EIS Submitted to HQ
August 2008	Revised Draft Report/EIS to HQ
August 2008	External Peer Review
September 2008	Federal Principals & HUD/FEMA Briefings
October 2008	Initiate Public Review per NEPA requirement (45 days)
November 2008	Public Hearing (one in each county)
December 2008	Public Review Complete
January 2009	District Commander's Report
January 2009	Final Report/EIS Submitted to HQ
January 2009	Civil Works Review Board
February 2009	State and Agency Review (30 days)
April 2009	Final Chief's Report



Contact Us



Dr. Susan Ivester Rees

US Army Corps of Engineers

Attn: Mississippi Coastal Improvements Program

P.O. Box 2288

Mobile, AL 36628-0001

www.ms Cip.usace.army.mil