

Living Shorelines and Protecting Property

Robert Turpin
Escambia County, Florida
Marine Resources Division

rkturpin@co.escambia.fl.us



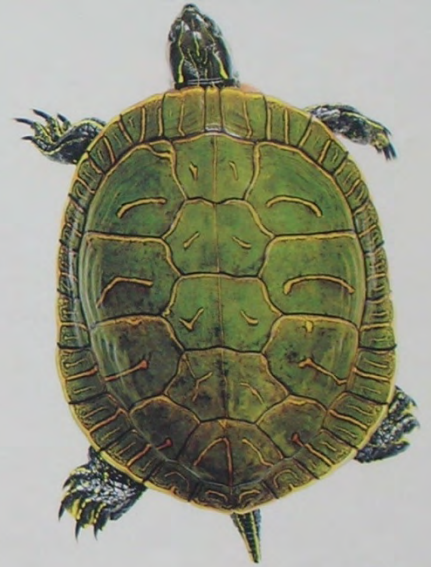
Live where the city
meets the shore.



FOUR SEASONS
RESIDENCES

Town Lake, Austin

www.TownLakeResidences.com



Reagan
National Advertising

Major Goals

- **Maintain Public Resources:**

- 1- Ecological functions
- 2- Ecosystem Services: food, water, air...
- 3- Recreational/"quality of life"/commercial values

- **Maintain Private Resources:**

- 1- Private property
- 2- Financial investments
- 3- Legal rights



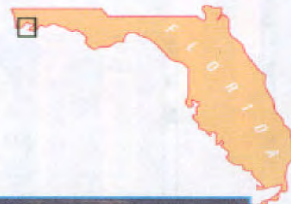
Strategies for Individual Waterbodies

- Identify critical areas
- Determine assimilative capacities
- Regulate impacts up at an appropriate level of risk
- Establish BMPs
- Promote “alternatives” to traditional armoring
- Mitigate for unavoidable impacts
- Purchase sensitive shorelines
- Restoration & creation to “productive” functionality
- Manage public use
- Education & outreach
- Research & Monitoring



BOATER'S
GUIDE TO

PENSACOLA BAY



CAUDELL, Pensacola, FL





SEAGRASSES

Monitoring, Ecology,
Physiology, and Management

5 Tape Grass Life History Metrics Associated with Environmental Variables in a Controlled Estuary

Stephen A. Bortone and Robert K. Turpin

Abstract Twenty samples of tape grass were removed from four locations along a salinity gradient in the Caloosahatchee River in Lee County, Florida each month in 1998. Examination of the environmental, independent variables indicates a strong seasonal cycle for temperature and a trend

Regulations: Establish, Implement & Enforce

- Federal, state, and local/municipal regulations (not always consistent)
- Regulations should be *coordinated*
- Determine appropriate strategies
- Enact regulations (e.g., Land Development Code)
- Implement (permitting)
- Enforcement









Philosophical Pondering:

What is *reasonable* expectation for static shoreline in dynamic systems

Additional Pondering:

What is *reasonable* for adjacent property owners???

Direct impacts due to armoring

Regional sediment supply

