

Indiana Coastal Program Update - 2008

Partners, Planning, and Outcomes



LMCP Actions Affecting Local Land Use Decisions

- Coastal Advisory Board Committees
- Outreach/Education – Increase Awareness
- Grants – Financial Ability for Change
- Marquette Phase I/II – Regional Vision
- CELCP – Technical Information
- 309 Public Access – Long Term Planning
- Coastal Resources Planner

Committees

- **Ours**

- Grants
- Coastal & Estuarine Land Conservation Program/Coastal Areas of Significance
- Nonpoint/Low Impact Development - 6217
- Outreach/Education

- **Others**

- Greenways Council
- Landuse Planning Committee
- Watershed Management Plans
- Environmental Management Planning

Outreach and Education

Tool Building -

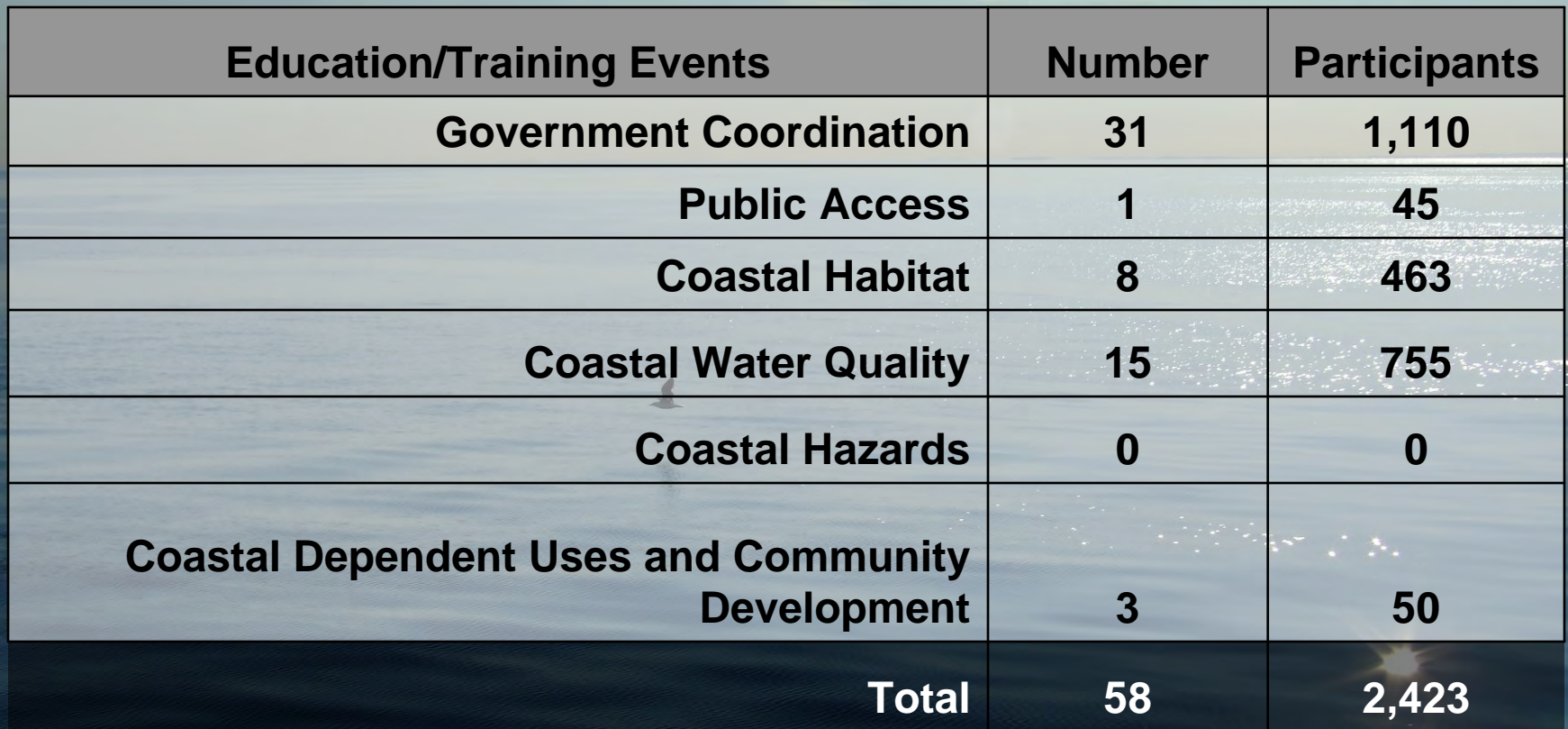
- Coastal Community Development Workshops
- Public Issues and Conflict Management Workshop
- Project Design and Evaluation Workshop
- Smart Growth Road Show
- Septic Maintenance Workshop
- Three Hoosier Riverwatch Workshops

Process Based

- Three Grants Workshops
- CELCP Application Workshop

Aw Inspiring...

- *Denis Sullivan* Tallship – 3 days of activities



Education/Training Events	Number	Participants
Government Coordination	31	1,110
Public Access	1	45
Coastal Habitat	8	463
Coastal Water Quality	15	755
Coastal Hazards	0	0
Coastal Dependent Uses and Community Development	3	50
Total	58	2,423

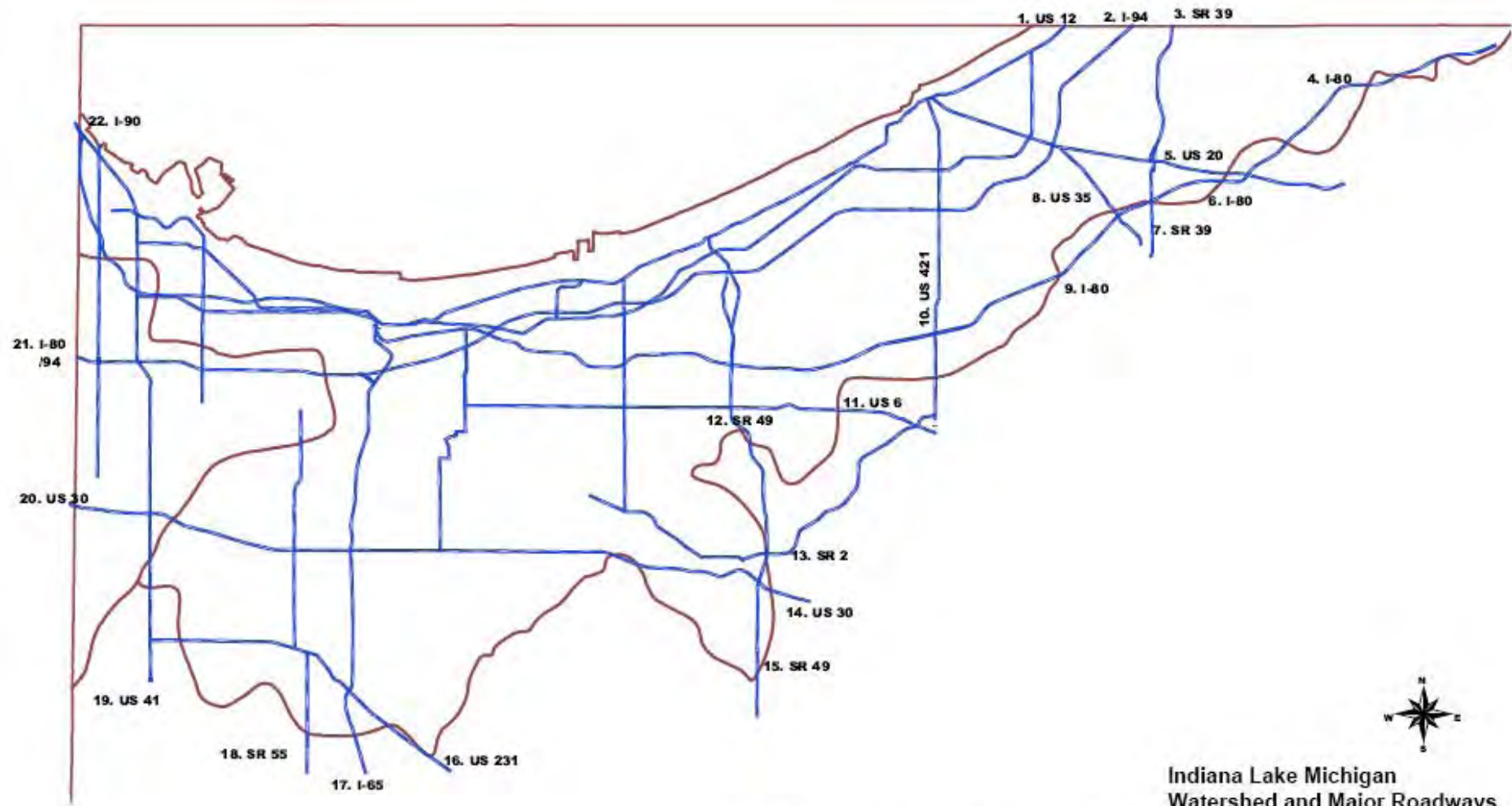
Note: Categories tracked changed 2007 to 2008. Thus, no comparison offered



Done!

Ecosystems of the Indiana Coastal Region





Indiana Lake Michigan Watershed and Major Roadways



IDNR Nature Preserves
April 25, 2006

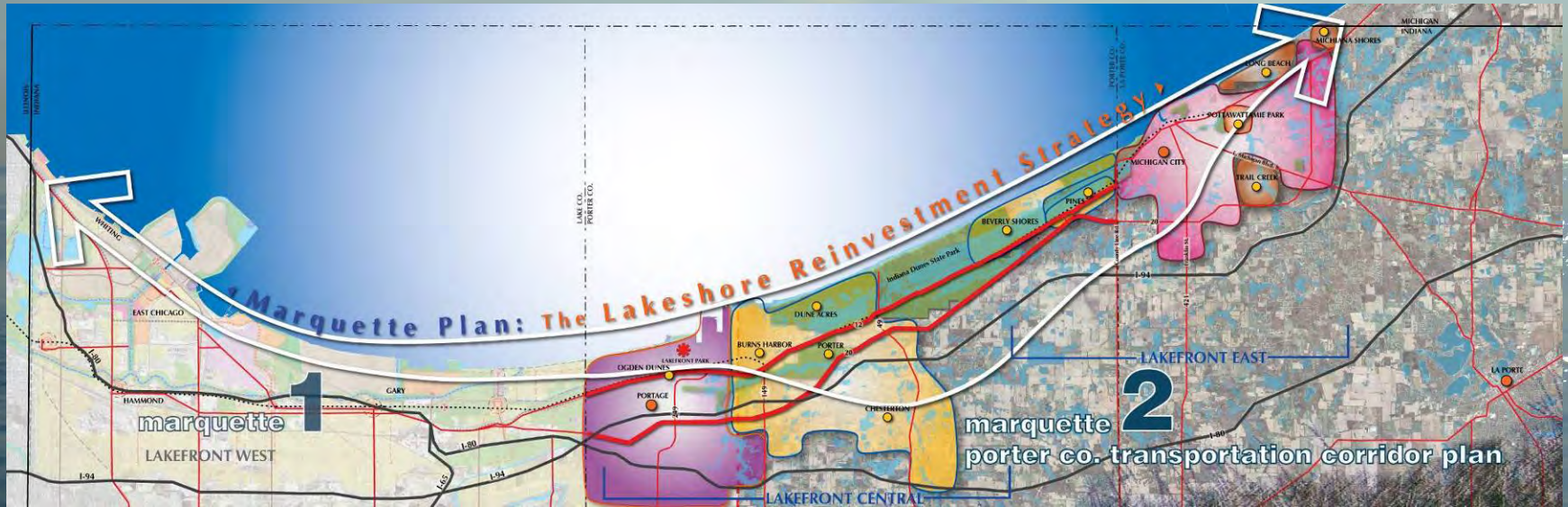
Grants

- 2007 Coastal Grants – 16 projects - \$719,782
- 2008 Coastal Grants – 15 projects - \$565,00 plus \$100,000 small grants
- 2009 – 30 Applications - \$1.4 M

Restoration Information	2007	2008
Number of acres of tidal (or Great Lakes) wetlands restored using CZM funds	160	10
Number of acres of beach and dune restored using CZM funds	120.2	0
Number of acres of other habitat types restored	49.4	396
Total Restored	329.6	406
Number of acres of other habitat types protected by acquisition or easement	246	73
Total Protected	246	73

Note: All numbers reflect efforts 7/1/07-6/30/08

Marquette Phase 2



Length of Shoreline - 21 miles

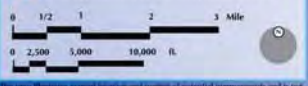
Length of Shoreline - 25 miles



Marquette Phase 2

Plan DONE!

- Lake Michigan
 - Indiana Dunes National Lakeshore
 - Indiana Dunes State Park
 - Floodplains
 - Wetlands
 - Beaches
 - Industries
 - Cities
 - Towns
 - South Shore Train Station
 - Preserve the Communities Within the Indiana Dunes NL
 - Enhance the Visitor; Improve Visitor Wayfinding & within these Communities
 - Existing Trails
 - New Trail Connections (NIRPC's 2005 Ped & Pedal Plan)
 - Blarway Opportunities (NIRPC Greenways & Blarways Plan)
- Promote Transit Oriented / Pedestrian Friendly Development; Capitalize on Existing Train Stations
 - Promote Multi-Modalities; Minimize Automobile Dependency
 - Potential Vehicular Gateways; Improve Wayfinding/Signage
 - Manage/Guide Visitors; Potential Gateway Corridors
 - Scenic Parkway (U.S. 12)
 - Working Corridor (U.S. 20)
 - Potential Redevelopment Opportunities; Promote Green Initiatives
 - Scenic Overlook Opportunities
 - Potential for aesthetic improvements / screening / improved Environmental quality / adaptive re-use/public open space
 - Preserve Public Access

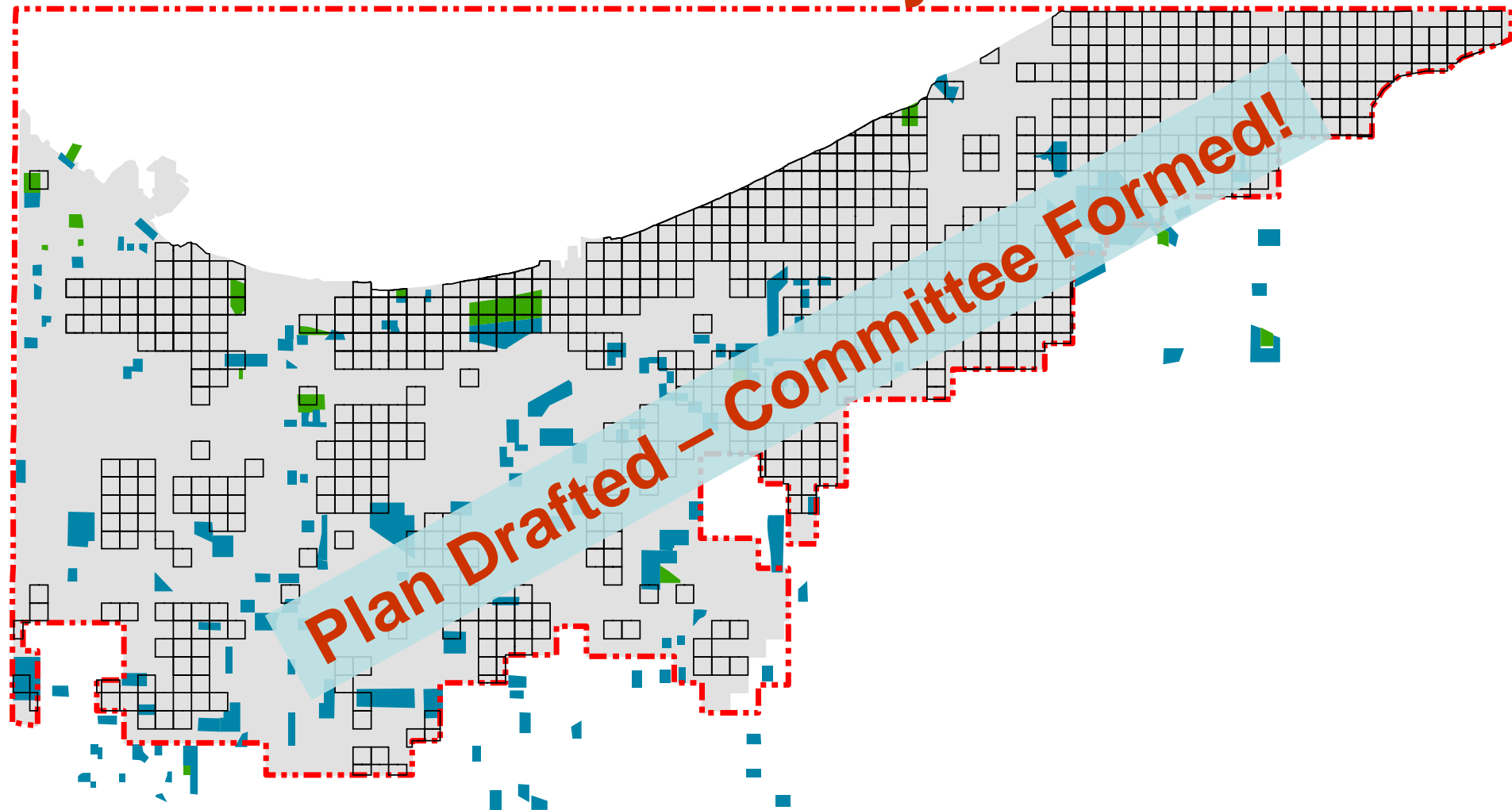


This map illustrates general location and timing of potential improvements and is not intended to show exact alignment or size of improvements.
© 2009

- Explore Opportunity for Corridor Enhancement, Scenic Corridor
- U.S. 20 - Urban Corridor
- U.S. 20 - Park Community Corridor
- North-South Gateway Corridors
- U.S. 20 - Explore opportunities for corridor enhancement, cohesive development
- Enhance corridors as Gateways to the Communities (U.S. 212, County line Rd., Michigan Blvd.)



CELCP Priority Areas



Plan Drafted - Committee Formed!

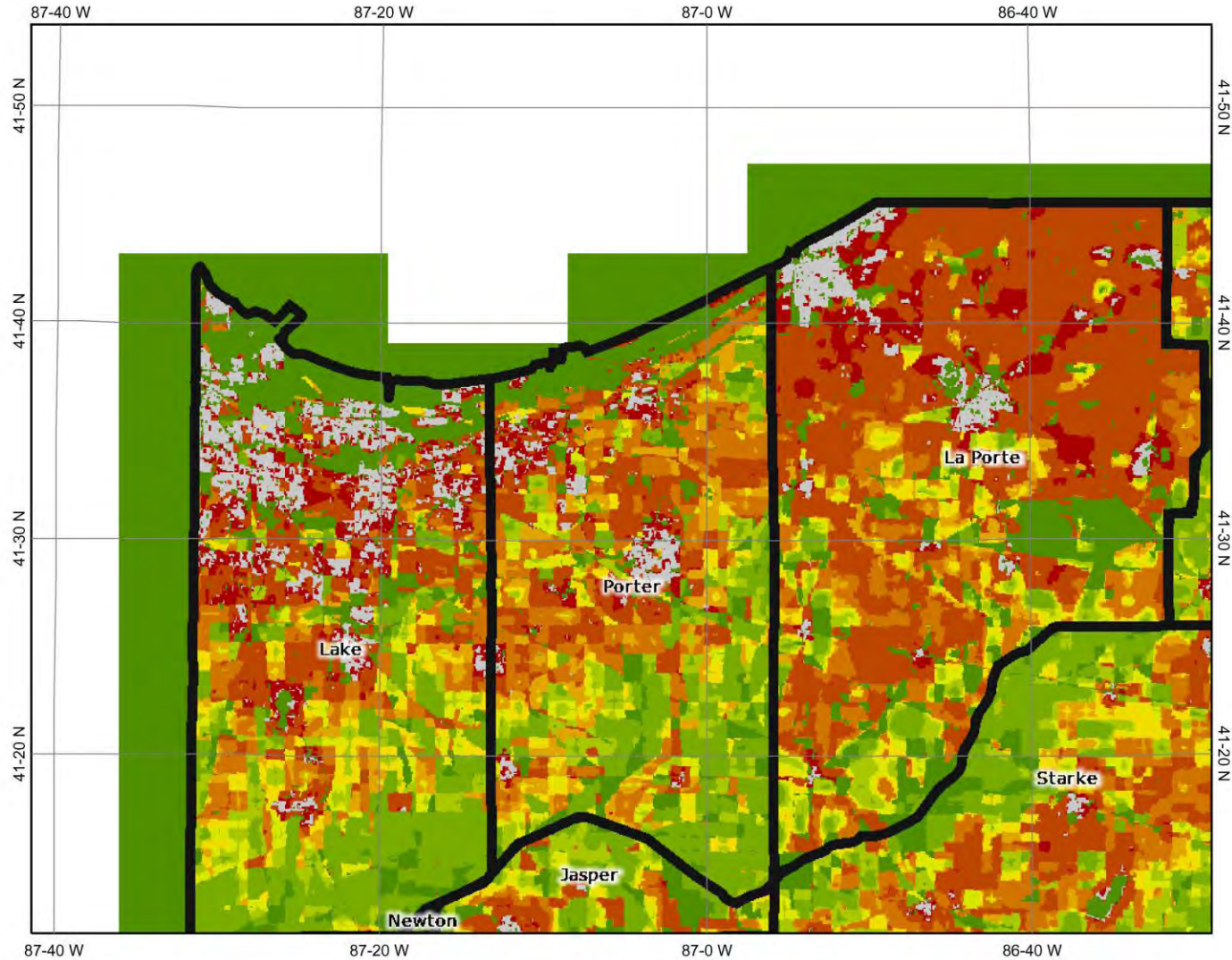
Threat Assessment and Prioritization - Predicted areas of residential development (blue) and open space (green), 2000-2030, from the Northwestern Indiana Regional Planning Commission report "2030 Connections." Black outlines show areas identified as ecologically important from IBI. Excerpted from IU *Biodiversity Conservation Possibilities and Threat Assessment for the Indiana Lake Michigan Coastal Management Program*

309 Public Access Project

- Step 1 – Update Inventory
- Step 2 – Perceived Public Need
- Step 3 – Fill in the gaps – Long Term Plan

Land Classification	Recreation Land Per 1000 Persons	Required based upon Population	Actual
Local Recreation Lands	20 Acres	14,840	
Regional Recreation Lands	35 Acres	25,970	
Total Recreation Lands	55 Acres	40,810	32,942

Housing Density 2030



Legend

- Indiana counties
- Housing development in 2030
- No housing units
- 80 acres per unit
- 50-80 acres per unit
- 40-50 acres per unit
- 30-40 acres per unit
- 20-30 acres per unit
- 10-20 acres per unit
- 1.7-10 acres per unit
- 0.6-1.7 acres per unit
- Less than 0.6 acres per unit
- Protected from development



Map center: 492791, 4599501



Scale: 1:544,849

This map is a user generated static output from an Internet mapping site and is for general reference only. Data layers that appear on this map may or may not be accurate, current, or otherwise reliable. THIS MAP IS NOT TO BE USED FOR NAVIGATION.

Coastal Resources Planner



U.S. ENVIRONMENTAL PROTECTION AGENCY

Smart Growth

Bookmarks

[Contact Us](#)

Search: All EPA This Area

You are here: [EPA Home](#) » [Office of Policy, Economics, and Innovation](#) » [Office of Cross-Media Programs](#) » [Smart Growth](#) EPA-NOAA
Growth Implementation Assistance for Coastal Communities

EPA-NOAA Smart Growth Implementation Assistance for Coastal Communities

- [Background](#)
- Project summaries:
 - [Houston, Texas](#)
 - [Marquette, Michigan](#)
 - [Pamlico County, North Carolina](#)
 - [Porter County, Indiana](#)
 - [Sussex County, Delaware](#)
 - [Wells, Maine](#)

Smart Growth Home
Basic Information
Publications
Grants and Funding
Making Smart Growth Happen
Resources
Newsroom
Related Links

Staff Contacts

Dunes State Park Annex Office:

Indiana Dunes State Park

Jenny Orsburn

Program Specialist

219/983-9912

jorsburn@dnr.IN.gov

Joe Exl

Coastal Nonpoint Coordinator

219/921-0863

jexl@dnr.IN.gov

Colin Highlands

Coastal Grant Program Ast.

(intern)

chighlands@dnr.in.gov

Coastal Resource Planner

To be named later...

Indianapolis Office:

402 West Washington Street

Mike Molnar

Program Manager

317/233-0132

mmolnar@dnr.IN.gov

Jenni Newman

Program Assistant

317/234-3985

jnewman@dnr.IN.gov

Questions?



DNR

Indiana Department of Natural Resources

INDIANA
LAKE MICHIGAN
COASTAL PROGRAM



www.in.gov/dnr/lakemich