



Embedded Geeks

Supporting Local Land Use
Decisions, and Building Capacity
Through Participatory GIS

Resource Inventory

- Money / time
- People
- Institutional knowledge
- Data / technology
- Know & understand the resource
- Develop a file management scheme
- Document the project's progress



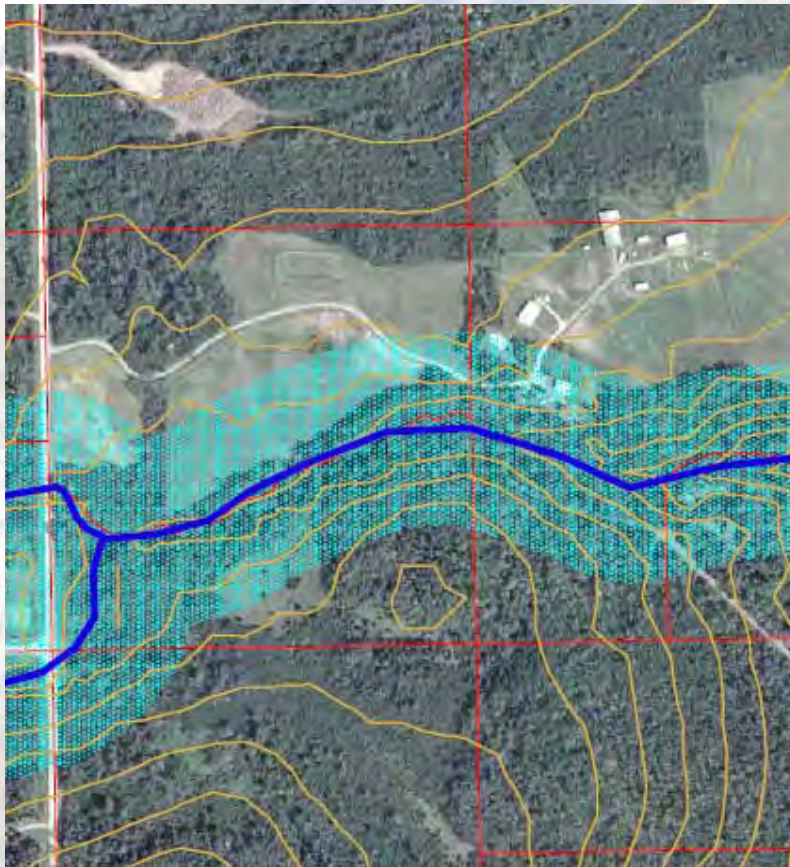
TOWN OF
LAKEWOOD
COMPREHENSIVE
LAND USE PLAN

15

18

18

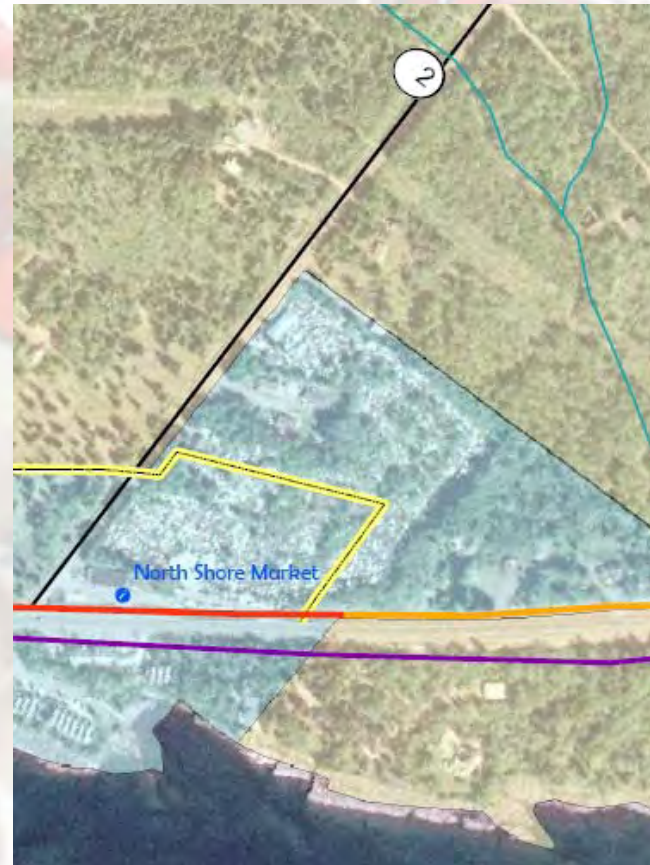
Night Meetings



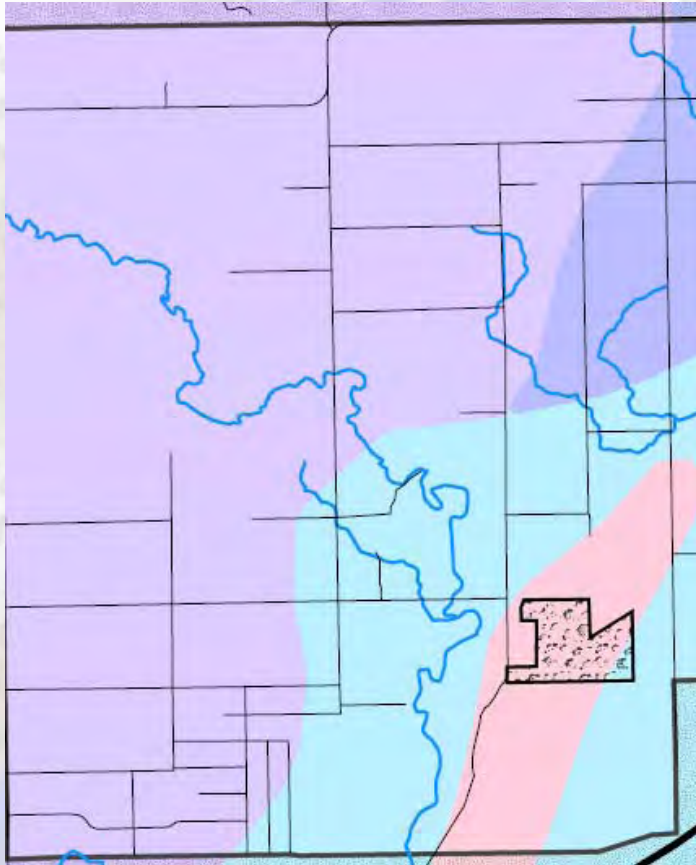
- Travel
- Large format maps
- Other printed material
- Digital projector
- Projector screen
- Laptop
- Extension cords
- Update your documentation

Markers and Laser Pointers

- Draw lines on paper maps
- Make changes and additions in real time
- Zoom in on focus areas
- Allows staff to improvise
- Live GIS saves paper, saving paper saves you time
- Update your documentation

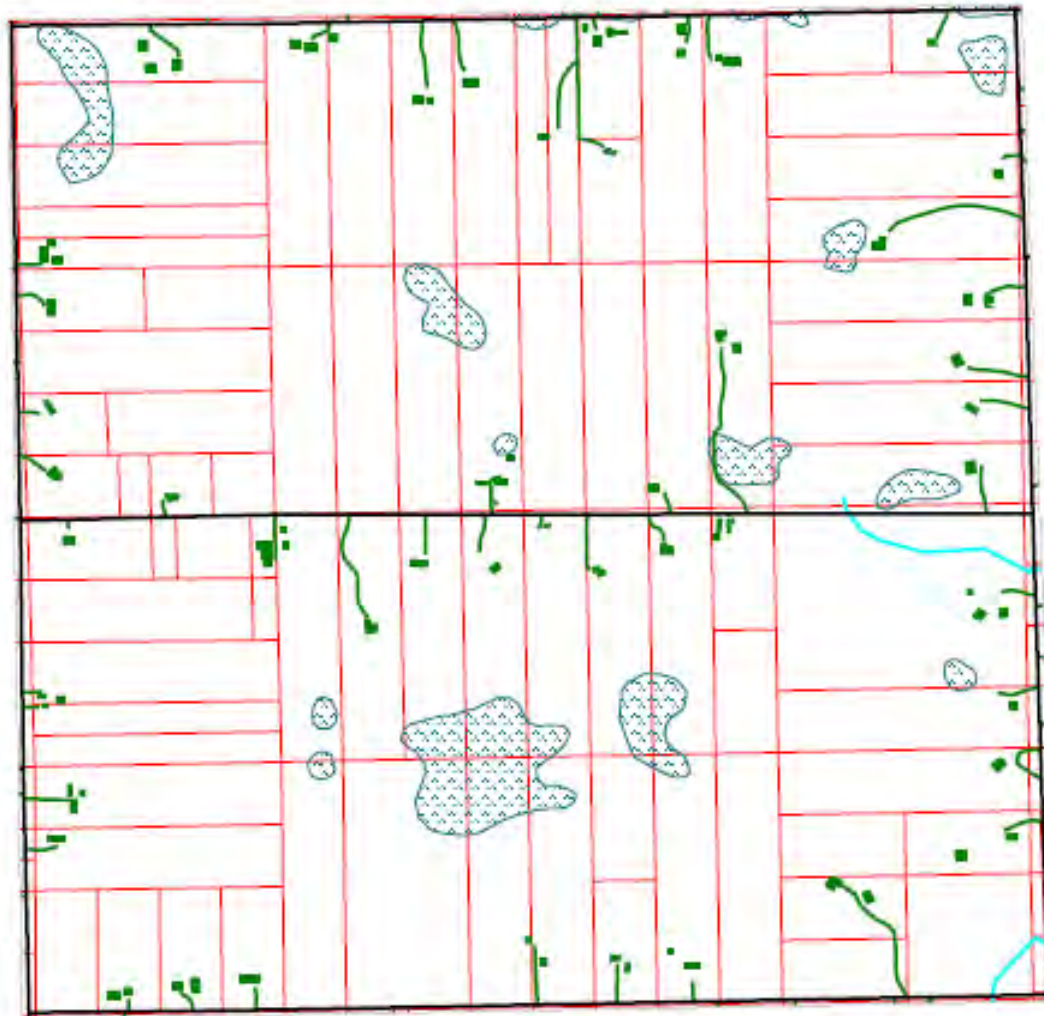


Cull, Discover, or Make It Up

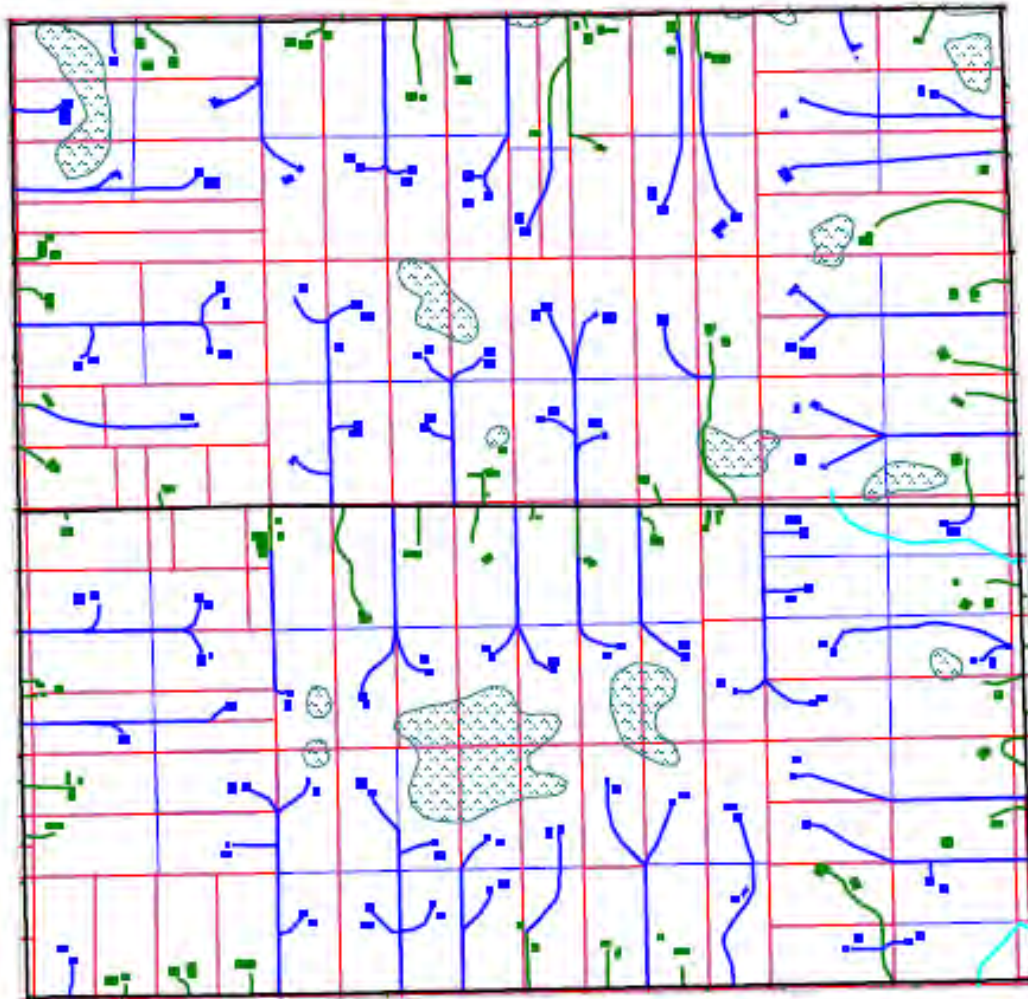


- Out with bad data
- New data arrives
- Develop data to meet the needs of your customer
- Update your documentation

Prepare Scenarios



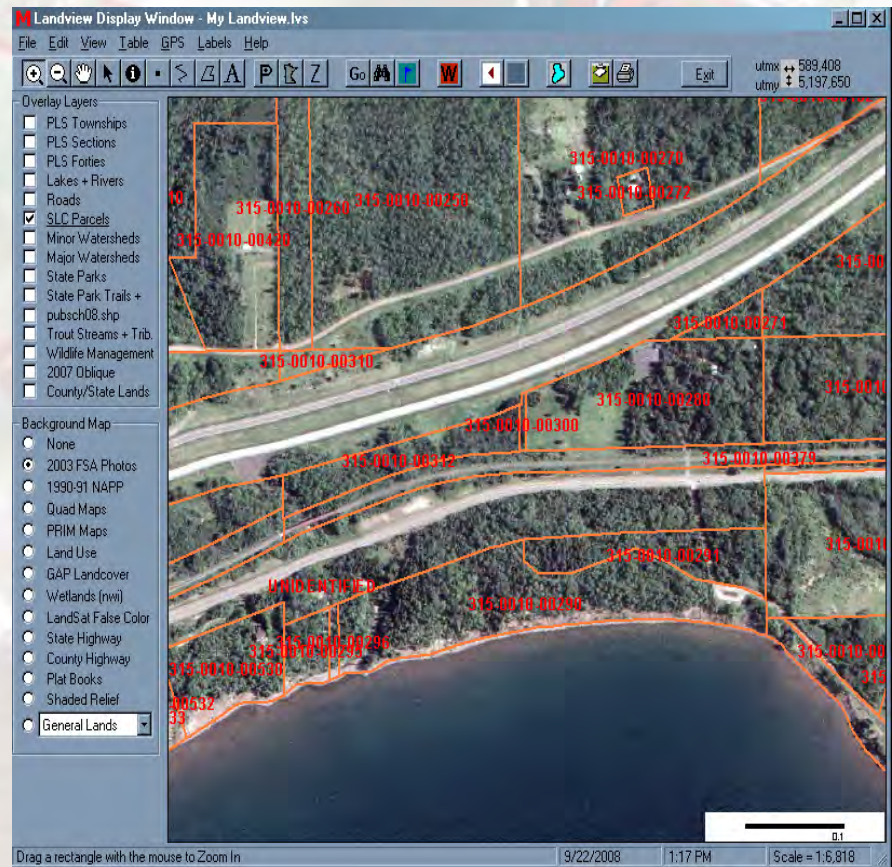
Budget Your Time



.....	14
.....	14
.....	14
.....	15
.....	18
.....	18

Building Capacity

- Provide GIS software & training
- DNR tools
- Include data developed in planning process
- Apply to real world situations



Clinton Little

GIS Support Specialist

Minnesota's Lake Superior Coastal Program

clinton.little@dnr.state.mn.us

Phone: 218.834.6636

www.mndnr.gov/waters/lakesuperior

