



2008 Program Update

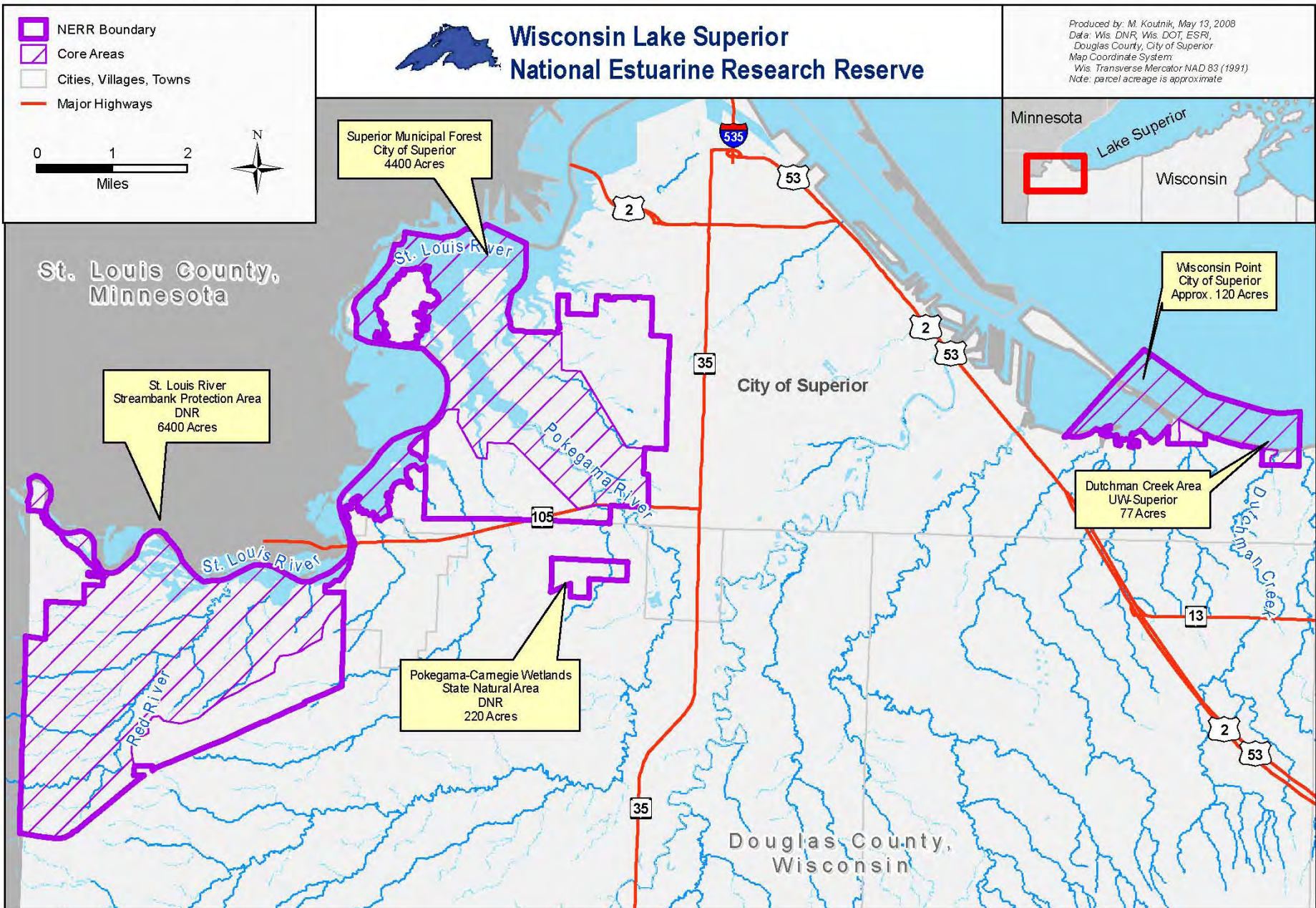
Mike Friis

Wisconsin Department of Administration

Habitat Protection

- Lake Superior NERR
 - WCMP, UW-Extension, WDNR, the City of Superior and Douglas County
 - St. Louis River nominated May 2008
 - ERD Scoping meeting in November 2008
 - EIS and Management Plan starts late 2008
 - Designation in late 2010

Map 4: Proposed Boundaries and Core Areas



Produced by: M. Koutnik, May 13, 2008
Data: Wis. DNR, Wis. DOT, ESRI,
Douglas County, City of Superior
Map Coordinate System:
Wis. Transverse Mercator NAD 83 (1991)
Note: parcel acreage is approximate

Habitat Protection

- CELCP
 - Three applications for FY09
- Invasive Species
 - DNR Phragmites removal at State Natural Areas
 - Private landowner outreach in Door County
 - Evaluation of Phragmites control methods

Nonpoint Source Pollution

- Beach Health
 - Continued support for contamination source detection and BMP installation.
- Wisconsin Clean Marina Program
 - Sea Grant & WHTA build a coalition of marina related partners and to develop and launch.
- Phosphorous Criteria Promulgation
 - WCMP participates in the Phosphorous Criteria Advisory Committee.

Natural Hazards

- **Lake Superior LIDAR**
 - A WCMP and Bayfield County project for the benefit of all four WI Lake Superior Counties as well as the Cities of Ashland and Superior.
- **Managing Land Use in Wisconsin's Coastal Erosion Hazard Areas**
 - The WCMP has provided enhancement funding for a project that builds on past efforts to develop erosion policies for Wisconsin's coastline.
- **Oblique Photography and Analysis of Changes to Wisconsin's Coast**
 - Photos are digitized and geolocated and together with photographs from the 1970s will be useful in documenting future shoreline change.

Education and Outreach

Wisconsin Coastal Management Grant Program

- Annual competitive process the WCMP that awards approximately \$1.5 million
- Applications are due November 3, 2008.

2008 Wisconsin Great Lakes Chronicle

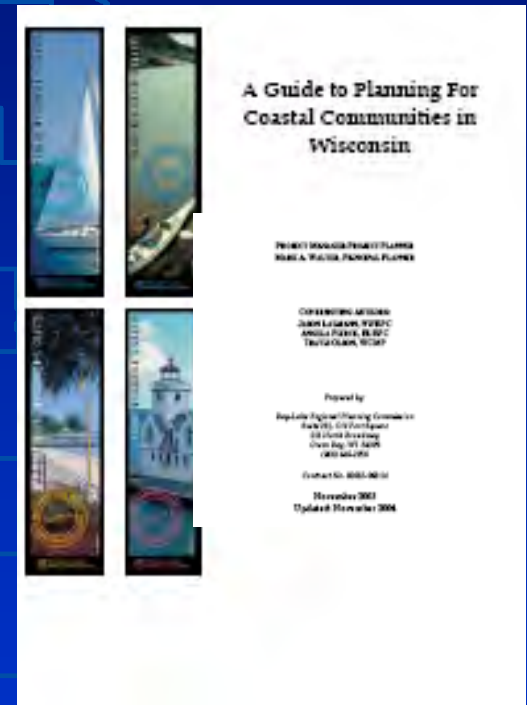
- Annually since 2002 the WCMP has published a document that informs policy makers and educates the general public on significant initiatives and emerging issues.

September as “Coastal Awareness Month”

- This year marks the tenth year that Coastal Awareness Month has been celebrated in Wisconsin.
- WCMC members Gary Becker and Larry MacDonald the Mayor’s of Racine and Bayfield Wisconsin made a public challenge to other coastal communities to support and participate in new and ongoing initiatives.
- Wisconsin Coastal Management Program has been sponsoring Wisconsin Beach Sweep since 2001. This year’s Wisconsin Beach Sweep includes the addition of underwater cleanups at harbors and marinas along Wisconsin’s coasts. This year’s sweep includes at least 28 beaches and 4 harbors and marinas.

Coastal Resources and Community Planning

- Focus on coastal resource protection
- Emphasize public participation and intergovernmental coordination
- Comprehensive planning and implementation
- Natural Hazards planning and implementation



Wisconsin Comprehensive Planning Law

Defines a comprehensive plan as containing nine elements:

- Issues and Opportunities
- Agricultural, Natural and Cultural Resources
- Housing
- Economic Development
- Transportation
- Intergovernmental Cooperation
- Utilities and Community Facilities
- Land Use
- Implementation

Consistency requirement:

Beginning on January 1, 2010, if a local governmental unit engages in official mapping, subdivision regulation, or zoning, those actions must be consistent with that community's comprehensive plan. This will make land use decisions much more predictable.

Comprehensive Planning Grant Program

www.doa.state.wi.us/compplanning

- Assists local governments in the development and adoption of comprehensive plans
 - Land Use Regulation Project (For WI's 1,900 Local Governments)
 - Comprehensive Planning Tool Kit
- Funding through the Department of Administration, Division of Intergovernmental Relations
 - Up to \$2 million annually
- Serves as a clearinghouse and library for comprehensive plans
 - Table of locally adopted Comprehensive Plans
 - Interactive Map

Intergovernmental Cooperation



A Guide to Preparing the Intergovernmental Cooperation of a Local Comprehensive Plan



P
Ag
W

A guide to preparing the land use element of a local comprehensive plan

Land Use

Resource guide

**"A strong economy, a healthy environment, and an enjoyable quality of life—all depend on the land."
-Diamond and Noonan**

Natural Resources

Managing Natural Resources
Comprehensive Planning

FOR TABLE OF CONTENTS CLICK HERE

Smart Growth and
Resource Planning



Preparing Wisconsin

Preparing the Housing Element
of a Local Comprehensive Plan

Second Edition



John Merrill • Joni M. Herren • Erich Schmidtke

Illustrations by John Merrill

Wisconsin - Extension

Multi-Agency Initiatives

- **Wisconsin Brownfield Coalition**

DOA together with the DNR and the Department of Commerce created the Wisconsin Brownfields Coalition (WBC) that applied for a single Brownfields Revolving Loan Fund (RLF) grant. Nationally \$75 million was available through the US EPA for the assessment and cleanup of contaminated properties. This revolving loan fund is administered by DNR, in cooperation with the other coalition members. The WBC provides sub-grants and low-to-no-interest loans to local governments, including counties, cities, villages, towns, and tribal authorities.

- **Wisconsin Waterfront Initiative**

The WCMP has continued to represent the Department of Administration in this Initiative, coordinated by the Department of Commerce.

Goals are to promote waterfront revitalization and tourism in northern Wisconsin.

A website to centralize the resources of multiple state agencies has been developed (<http://commerce.wi.gov/cd/cd-wwi-home.html>).

- **Wind on the Water**

A recommendation of Governor Doyle's Task Force on Global Warming (http://dnr.wi.gov/environmentprotect/gtfgw/documents/interim_report.pdf)

Public Service Commission has convened a work group to review the viability of wind power development on the Great Lakes. The group is due to provide the Public Service Commission with a report on its findings by approximately September 30, 2008.