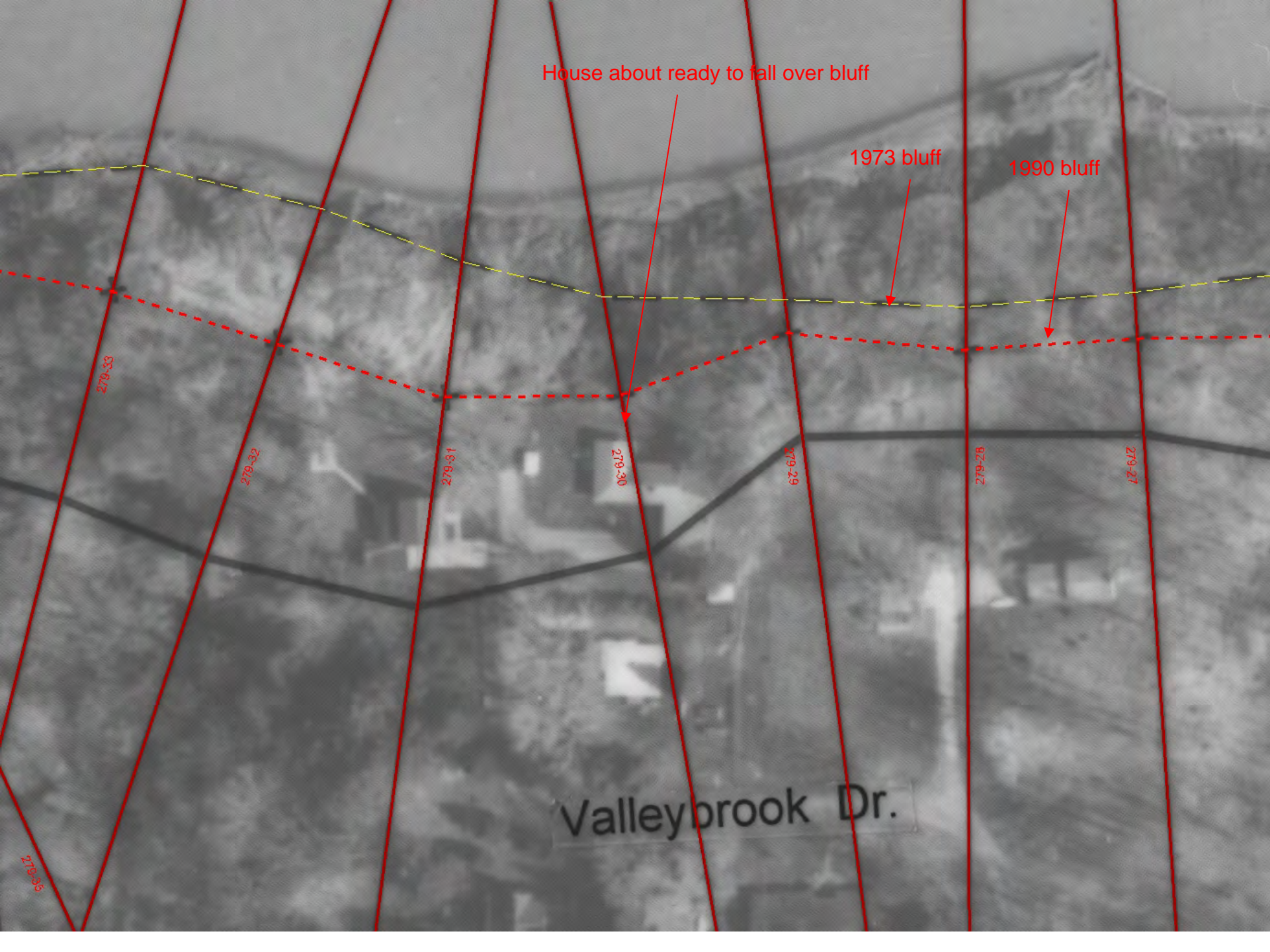


Ashtabula County Coastal Erosion Examples

James McDonald

Ohio Division of Geological Survey





House about ready to fall over bluff

1973 bluff

1990 bluff

Valleybrook Dr.

270-33

270-32

18-612

279-30

279-29

92-612

279-27

179-36

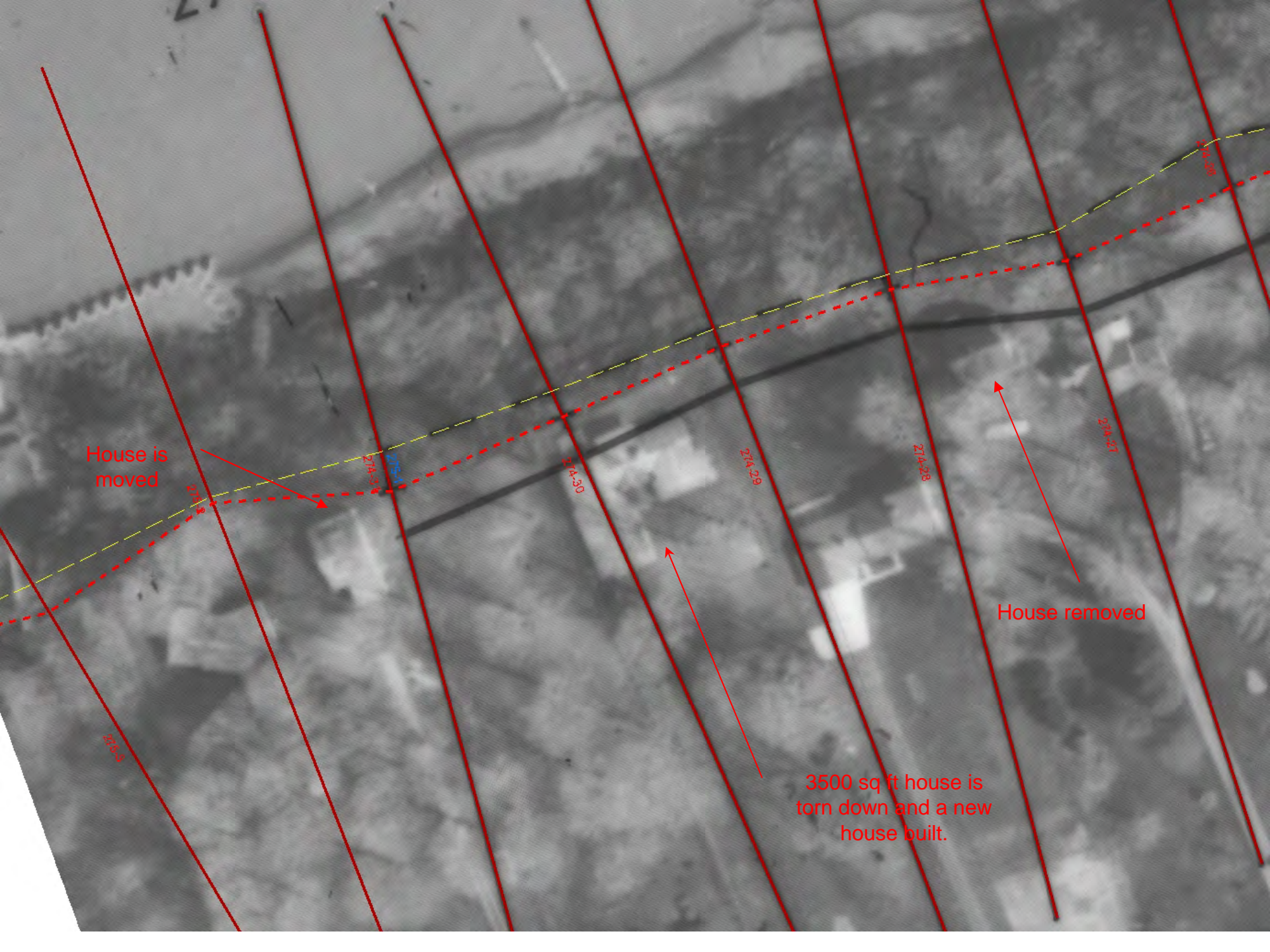
House about ready to fall over bluff
The next slide shows what has happened since 2004

1973 bluff

1990 bluff







House is moved

House removed

3500 sq ft house is torn down and a new house built.

274-31

274-30

274-29

274-28

274-27

274-26

274-25



House is moved

New houses built.

214-5

215-1

214-20

216-20

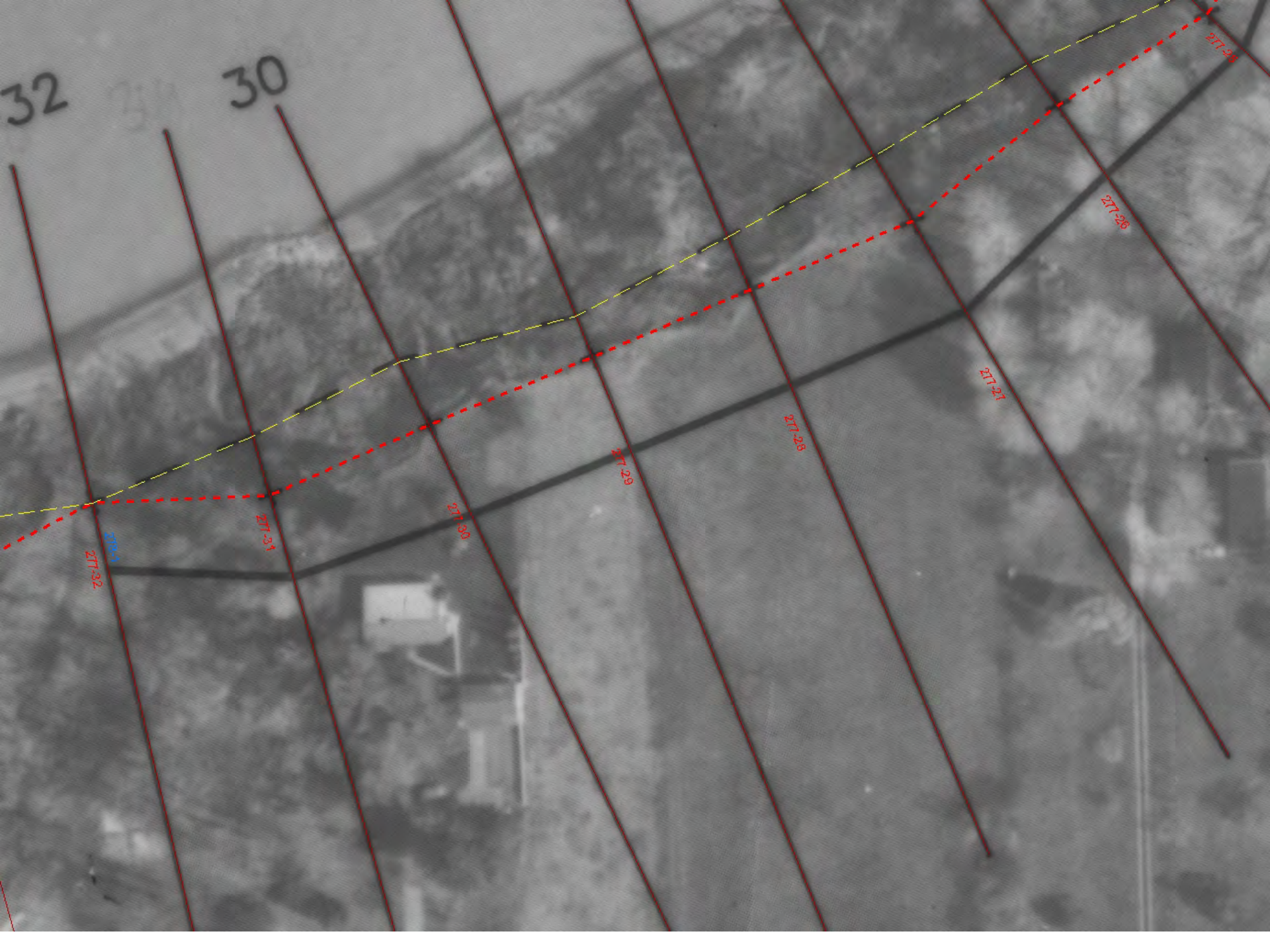
214-22

214-23

215-5

214

214-24



32

31

30

217-32

217-31

217-30

217-29

217-28

217-27

217-26

217-25

217-24



217-35

217-38

217-31

217-30

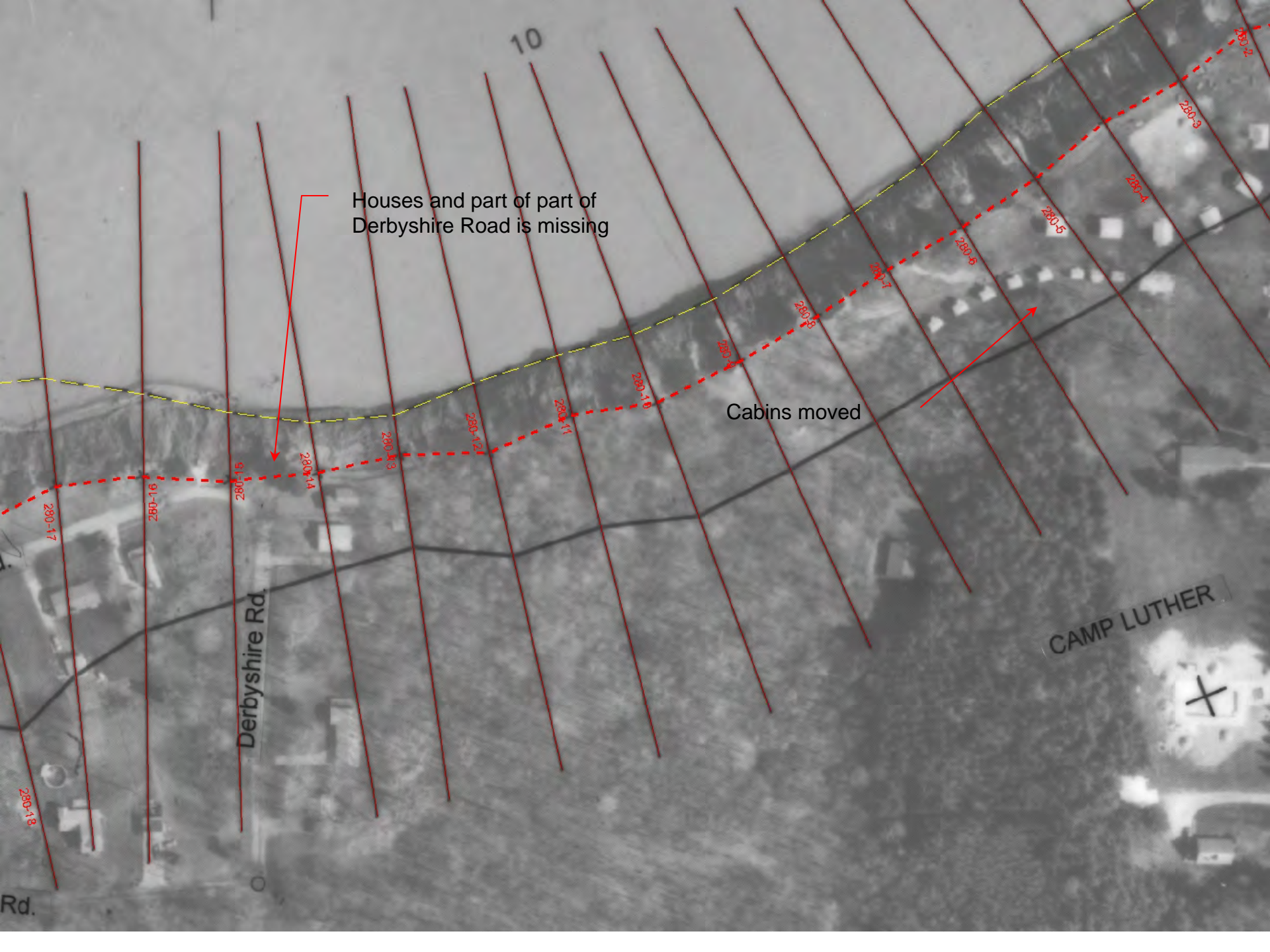
217-29

217-28

217-27

217-26

217-25



10

Houses and part of part of Derbyshire Road is missing

Cabins moved

Derbyshire Rd.

CAMP LUTHER

Rd.

280-18

280-17

91-082

91-082

280-14

280-13

280-12

280-11

280-10

280-9

280-8

280-7

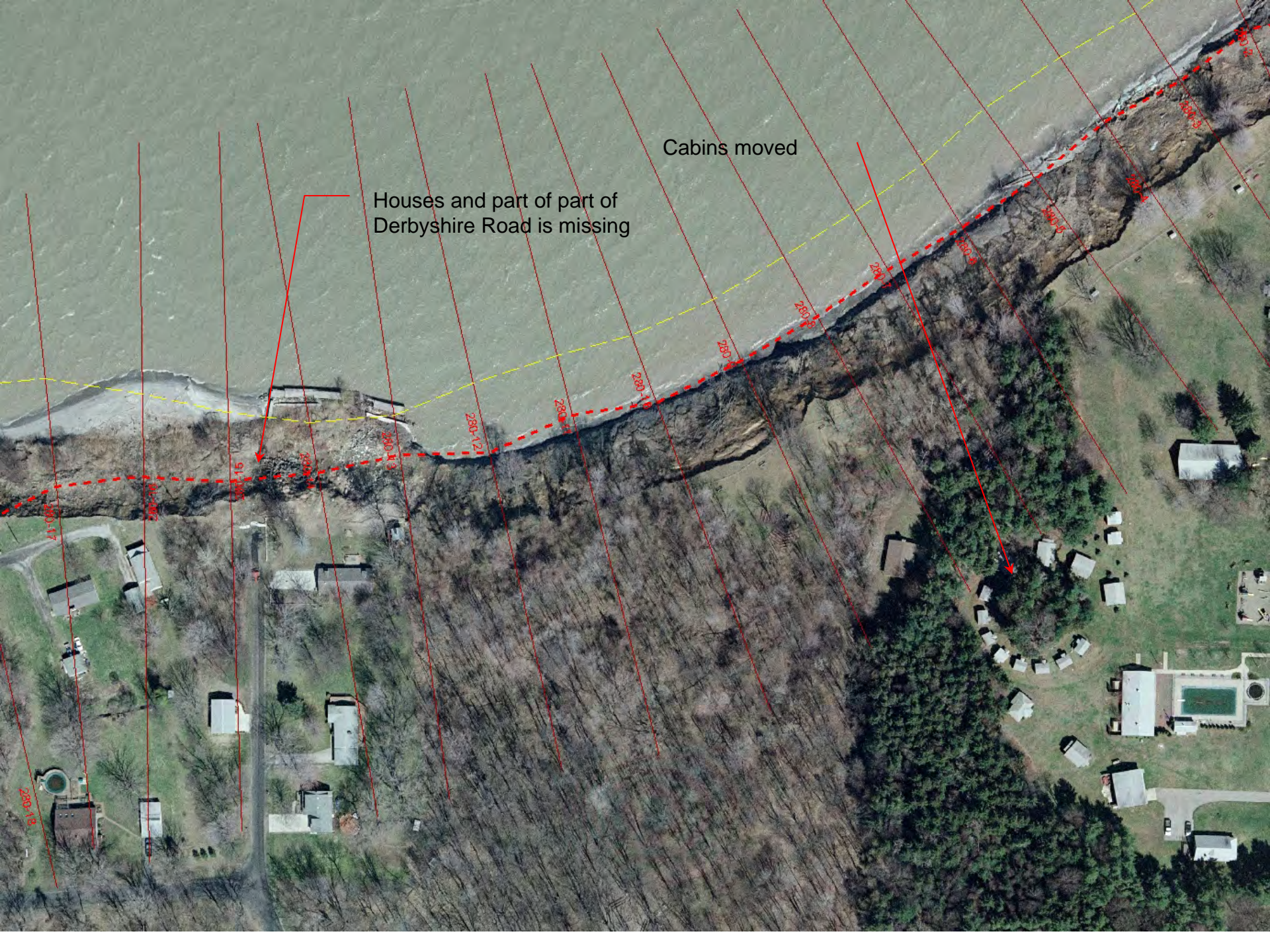
280-6

280-5

280-4

280-3

280-2



Cabins moved

Houses and part of part of Derbyshire Road is missing

280-18

280-17

280-16

280-15

280-14

280-13

280-12

280-11

280-10

280-9

280-8

280-7

280-6

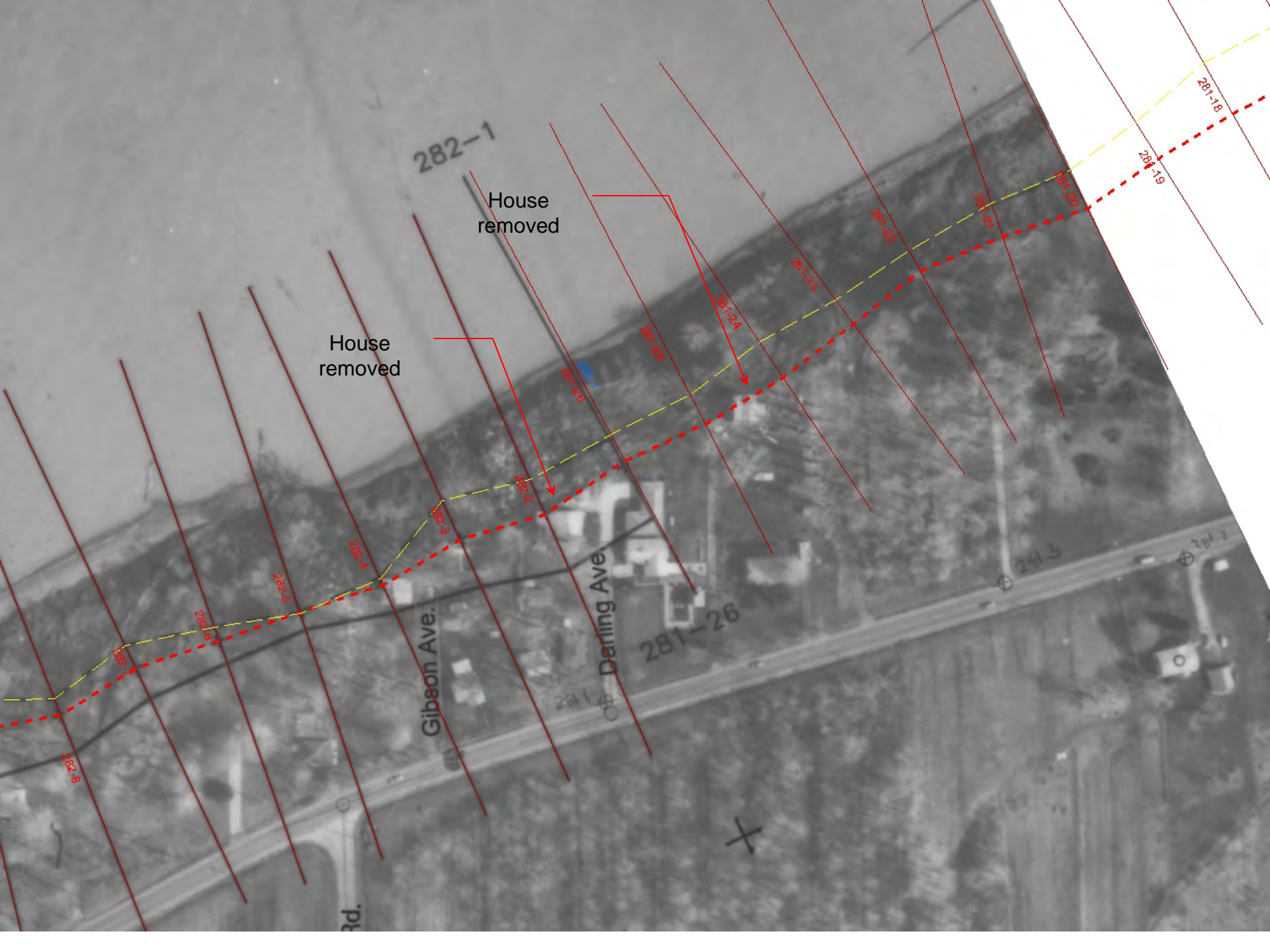
280-5

280-4

280-3

280-2

280-1



282-1

House removed

House removed

Gibson Ave.

Daring Ave.

281-26

281-18

281-19

281-22

281-21

281-20

281-24

281-25

282-1

282-2

282-3

282-4

282-5

282-6

282-8

281-3

281-7

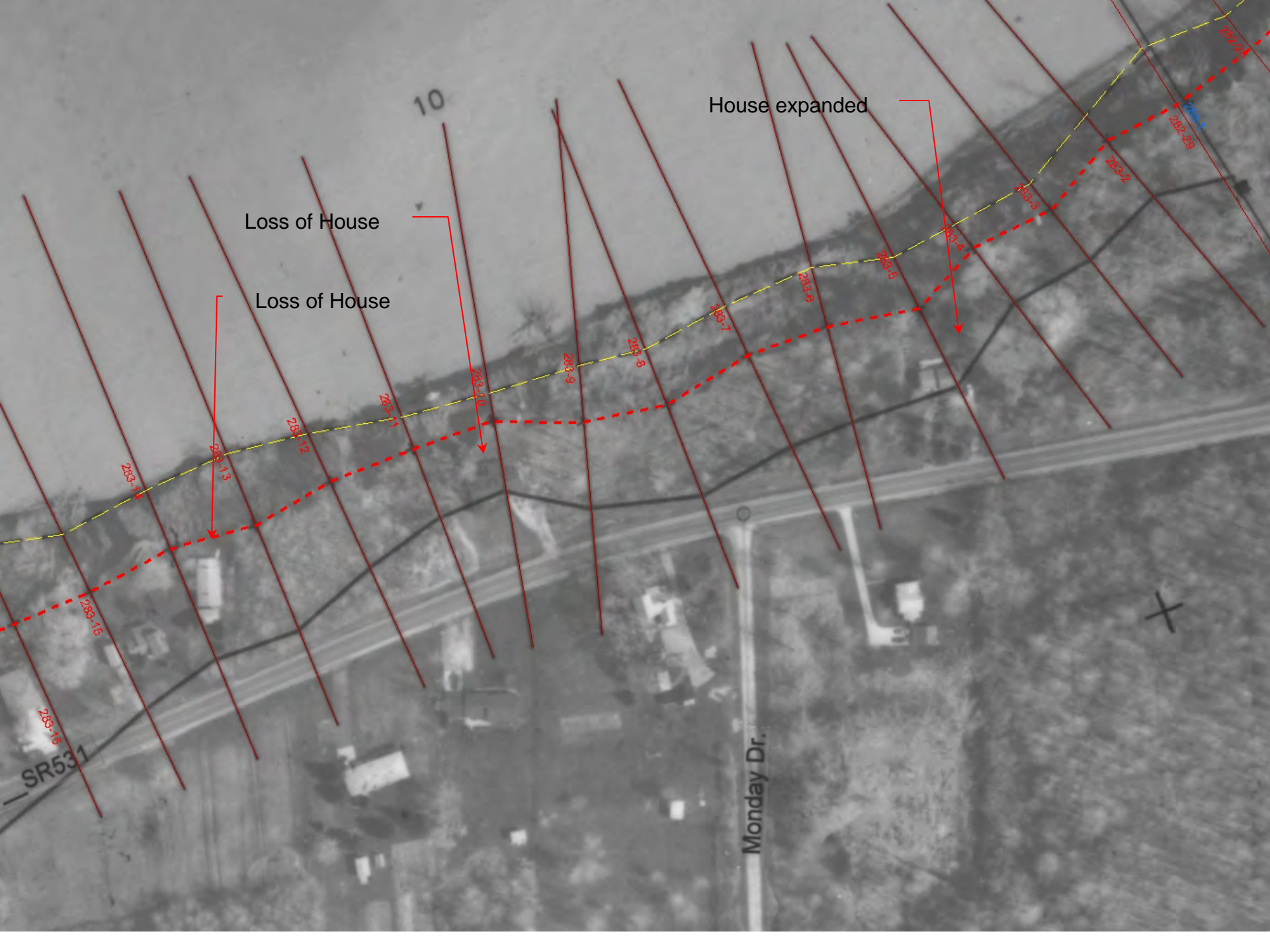
rd.





House removed

House removed



10

House expanded

Loss of House

Loss of House

SR531

Monday Dr.



288-16

288-15

288-14

288-13

288-12

288-11

288-10

288-9

288-8

288-7

288-6

288-5

288-4

288-2

288-209

288-3

Loss of house
Moved into garage
See next slide for example

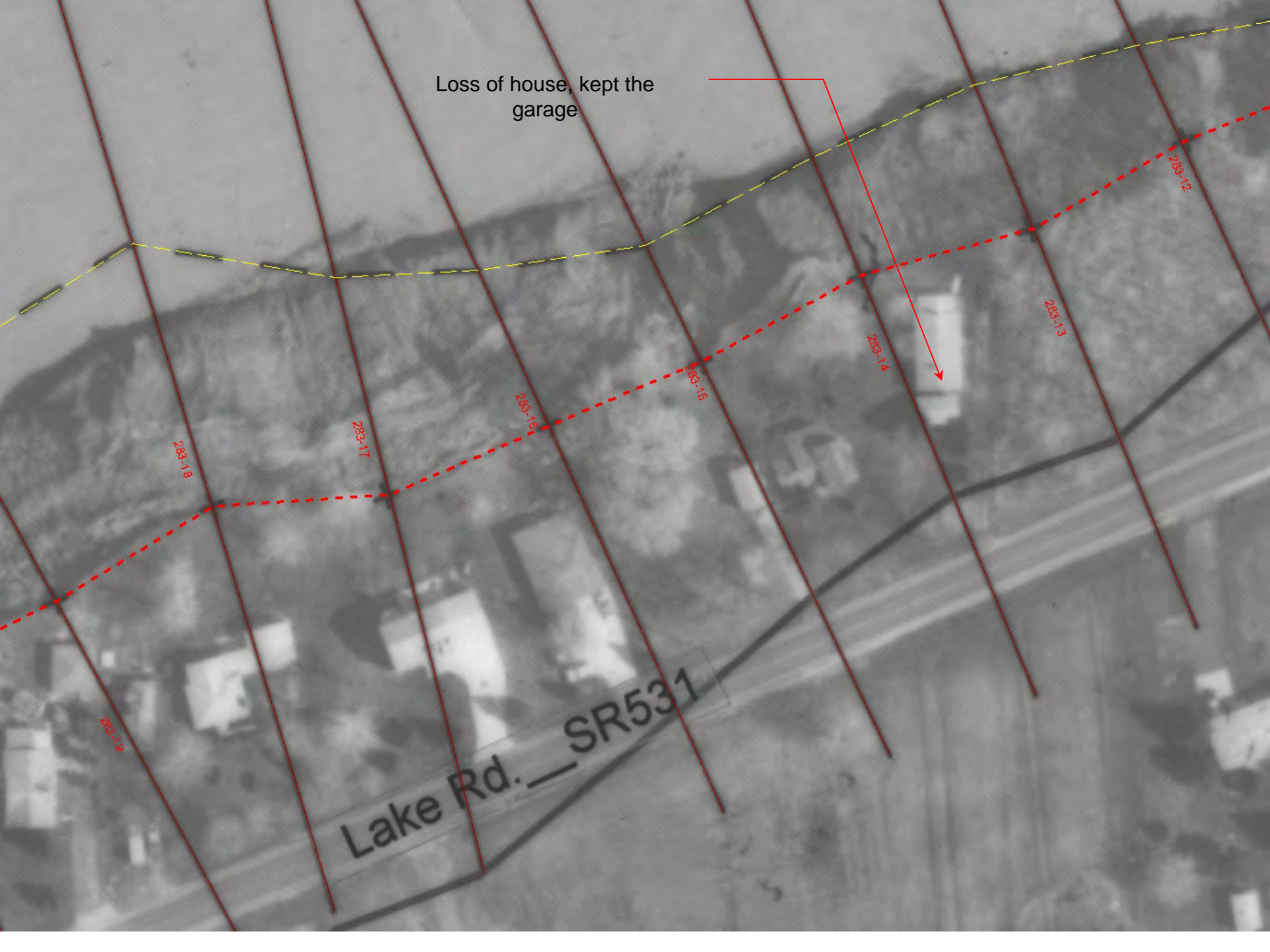
Loss of house
Moved into garage

House expanded





Loss of house, kept the garage



283-18

283-17

283-16

283-15

283-14

283-13

283-12

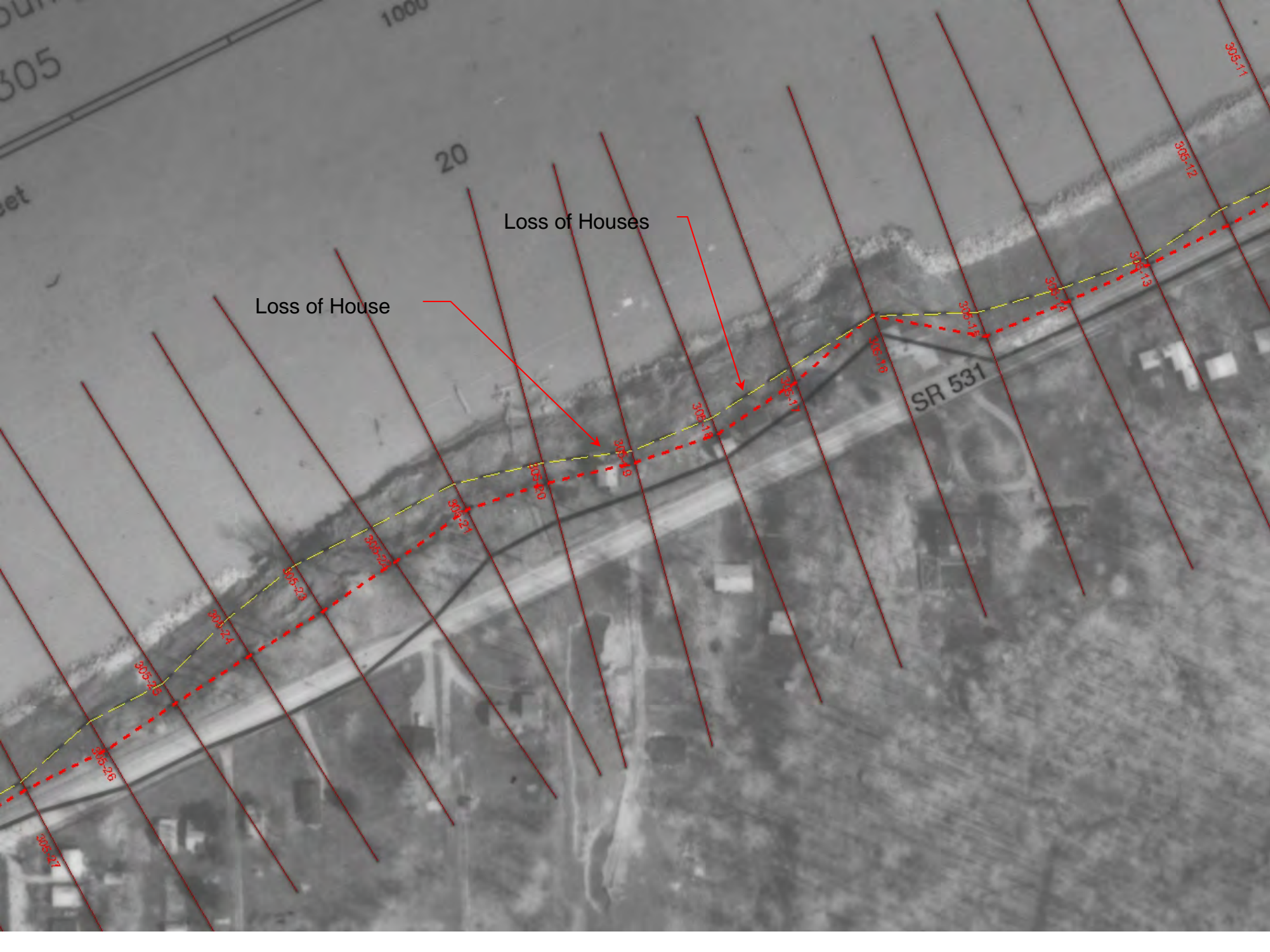
283-19

Lake Rd. SR531



New erosion control structures

Loss of house, kept the garage



Loss of Houses

Loss of House

SR 531

305-17

305-26

305-26

305-24

305-23

305-22

305-21

305-20

305-19

305-18

305-17

305-16

305-15

305-14

305-13

305-12

305-11

305

20

1000

et



Loss of House

Loss of Houses

300-26

300-26

300-26

300-26

300-26

300-26

300-26

300-26

300-26

300-26

300-26

300-26

300-26

300-26

300-26

300-26

300-26

300-26

300-26

300-26

300-26

300-26

300-26

300-26

300-26

300-26

300-26

300-26

300-26

300-26

300-26

300-26

300-26

300-26

300-26

300-26

300-17

300-17

300-17

300-17

300-17

300-17

300-17

300-17

300-17

300-17

300-17

300-17

300-17

300-17

300-17

300-17

300-17

300-17

300-17

300-17

300-12

300-12

300-12

300-12

300-12

300-12

300-12

300-12

300-12

300-12

300-12

300-12

300-12

300-12

300-12

300-12

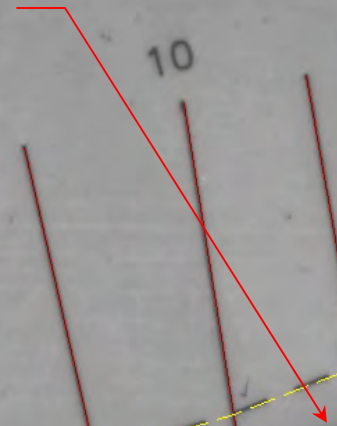
300-12

300-12

Feet



Shore structure failure



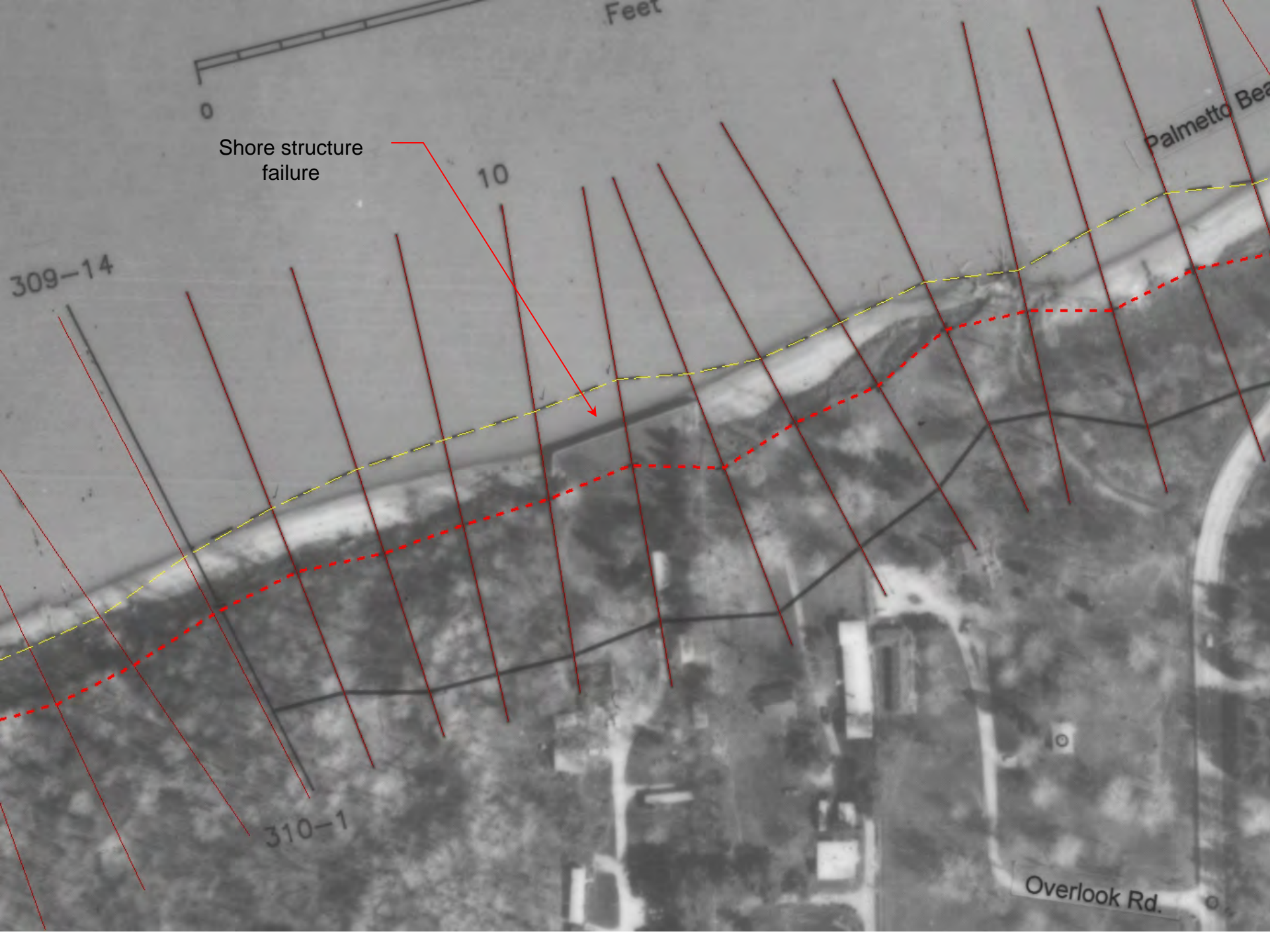
309-14

10

Palmetto Beach

310-1

Overlook Rd.



Shore structure failure

