

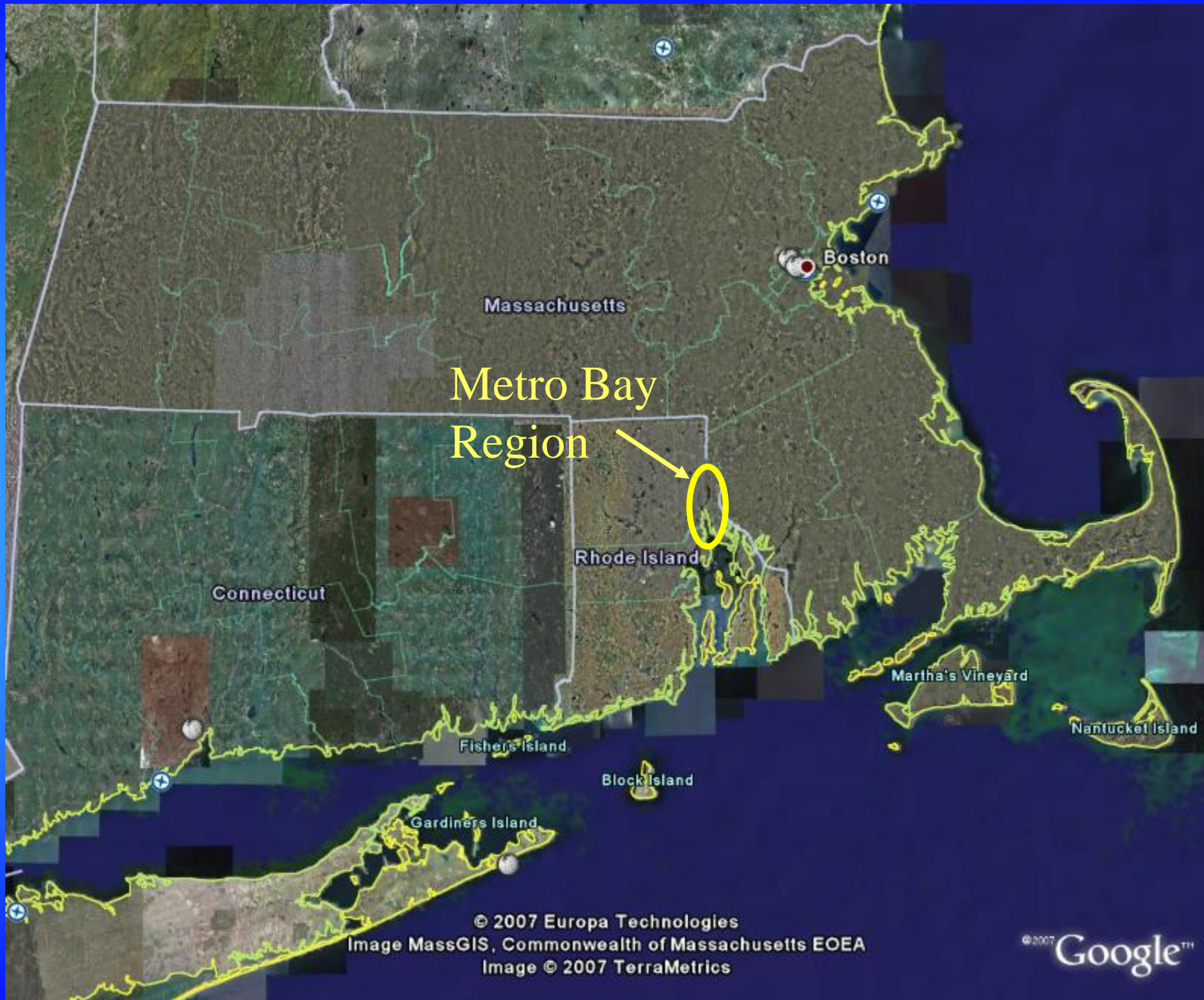
Photo by  
Richard Benjamin

# Urban Coastal Greenways

## A New Approach For Buffers in the Urban Coastal Environment

Rhode Island Coastal Resources Management Council





Metro Bay  
Region

Boston

Massachusetts

Connecticut

Rhode Island

Martha's Vineyard

Nantucket Island

Fishers Island

Block Island

Gardiners Island

© 2007 Europa Technologies  
Image MassGIS, Commonwealth of Massachusetts EOE  
Image © 2007 TerraMetrics

© 2007 Google™

# CRMC Special Area Management Plans





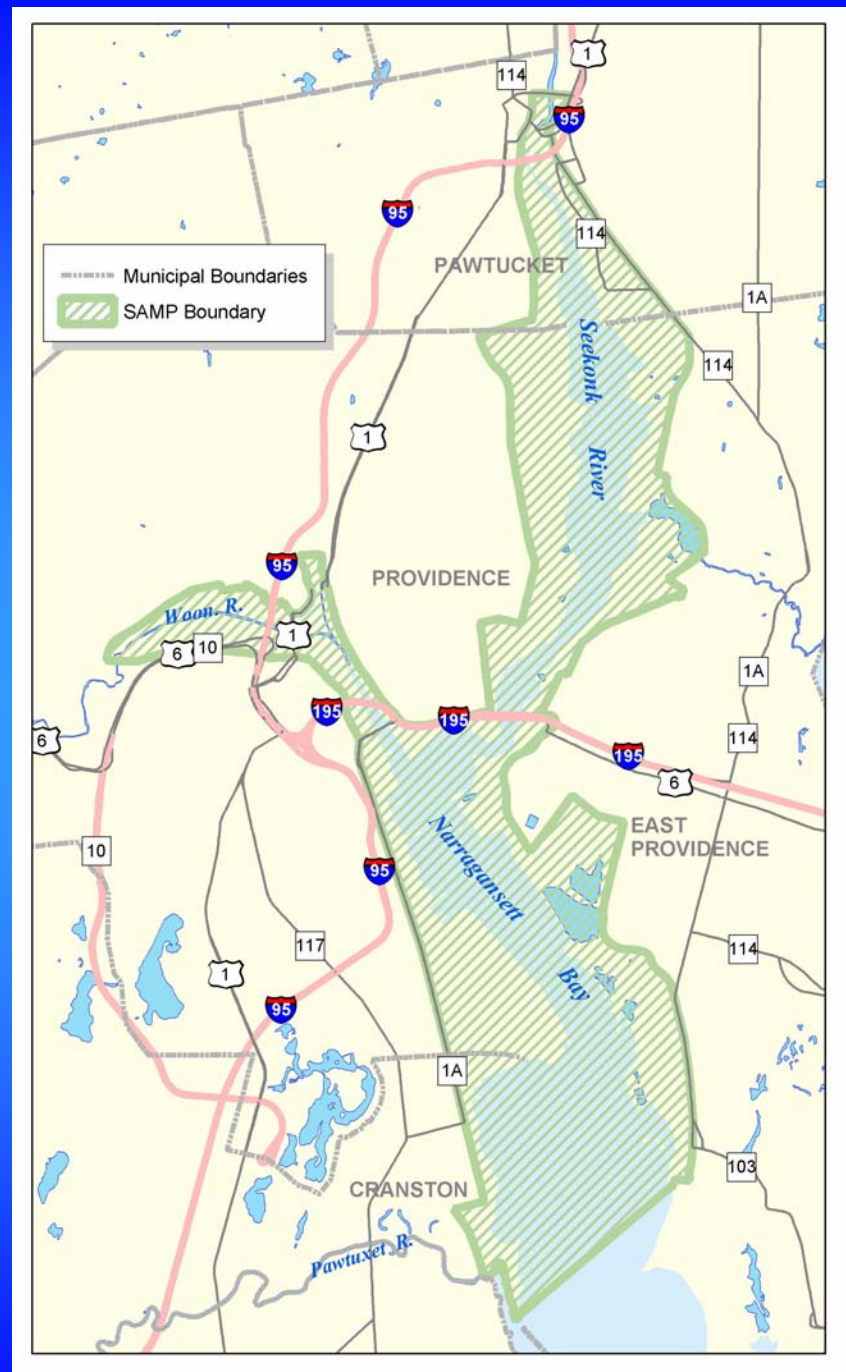
# Metro Bay Region SAMP Boundary

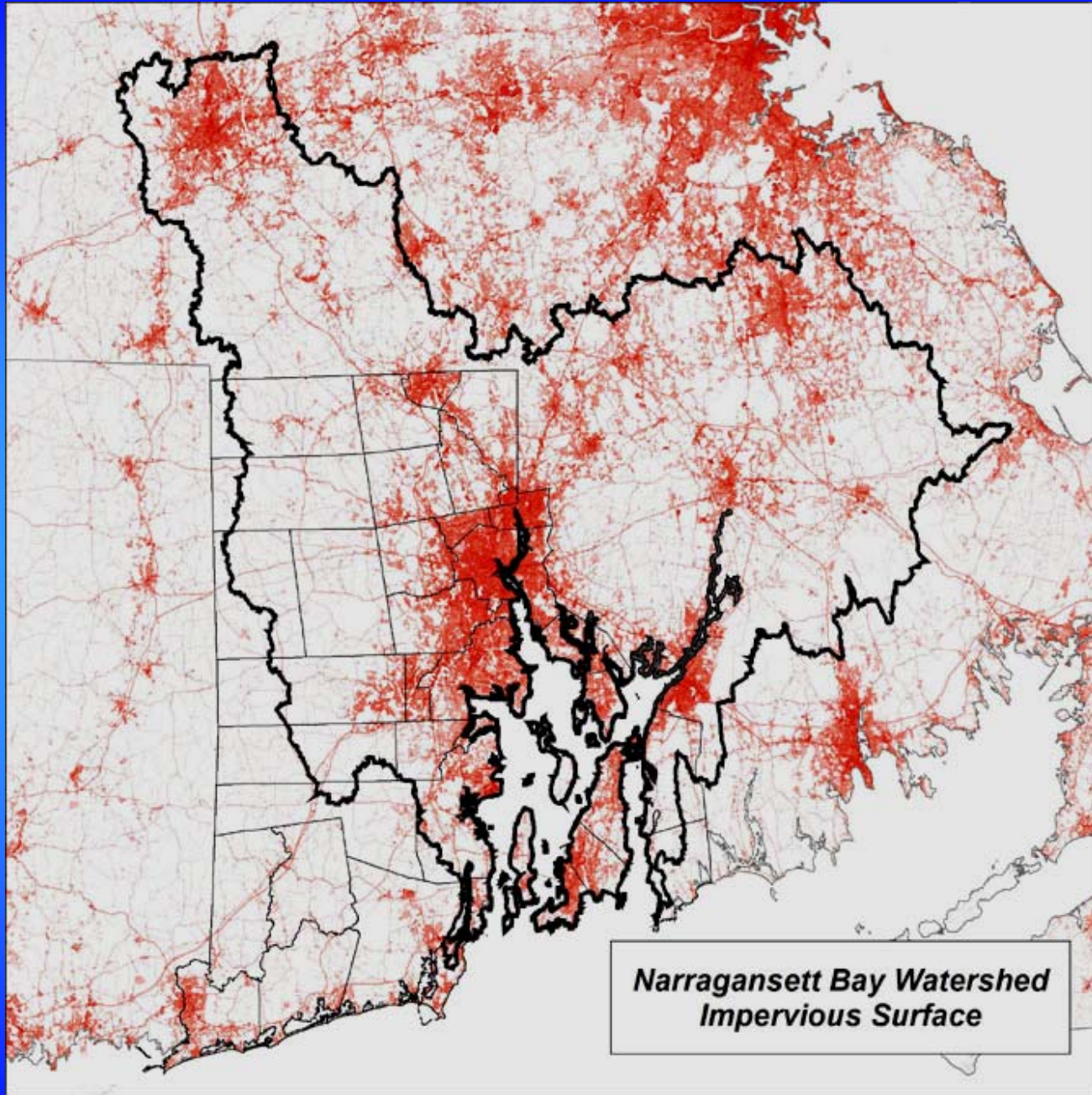
Cranston

Providence

Pawtucket

East Providence



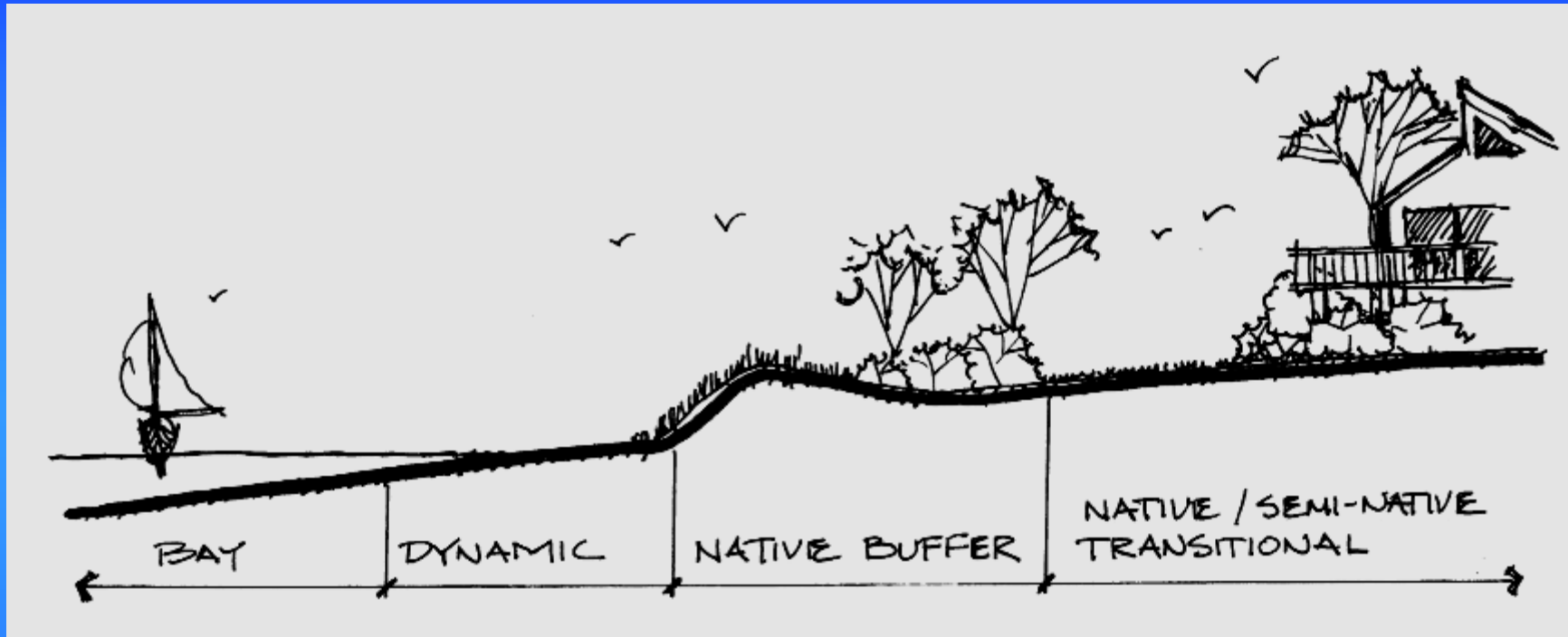


# Upper Providence River and Port of Providence





# Coastal Buffers



Dynamic → Sensitive → Useable land

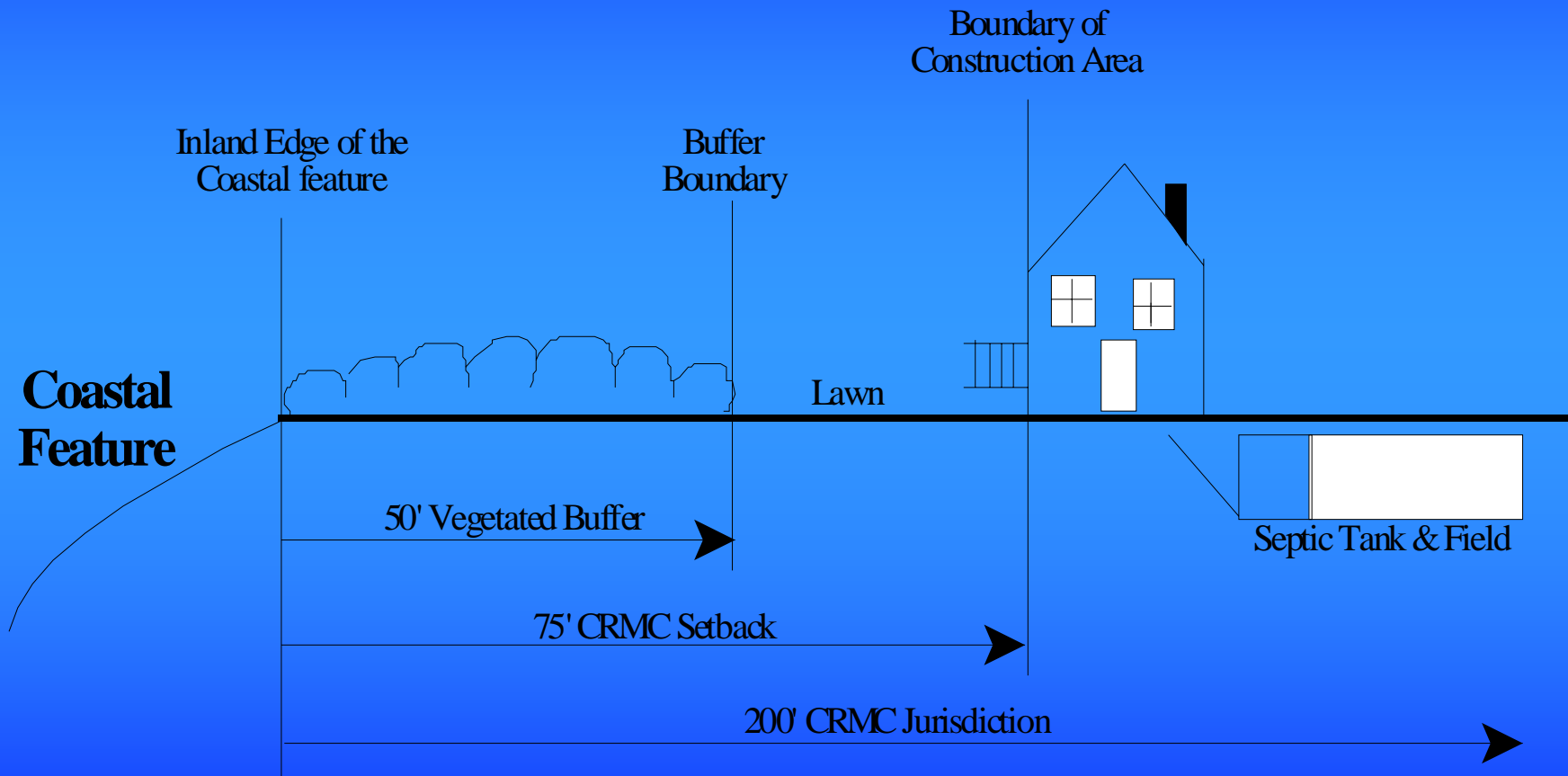
# **CRMC Setback & Buffer Rules**

## **(Redbook Sections 140 & 150)**

- Applies to large residential coastal lots
- Minimum 50' setback from coastal feature
- Buffer width based on lot size and water type
- Minimal buffer management allowed
- **Variance is only option for reducing buffer...**  
**no Public Benefit from granting the variance**



# RICRMP Section 150: Coastal Buffers



# Coastal Buffer Zone Planting Plan

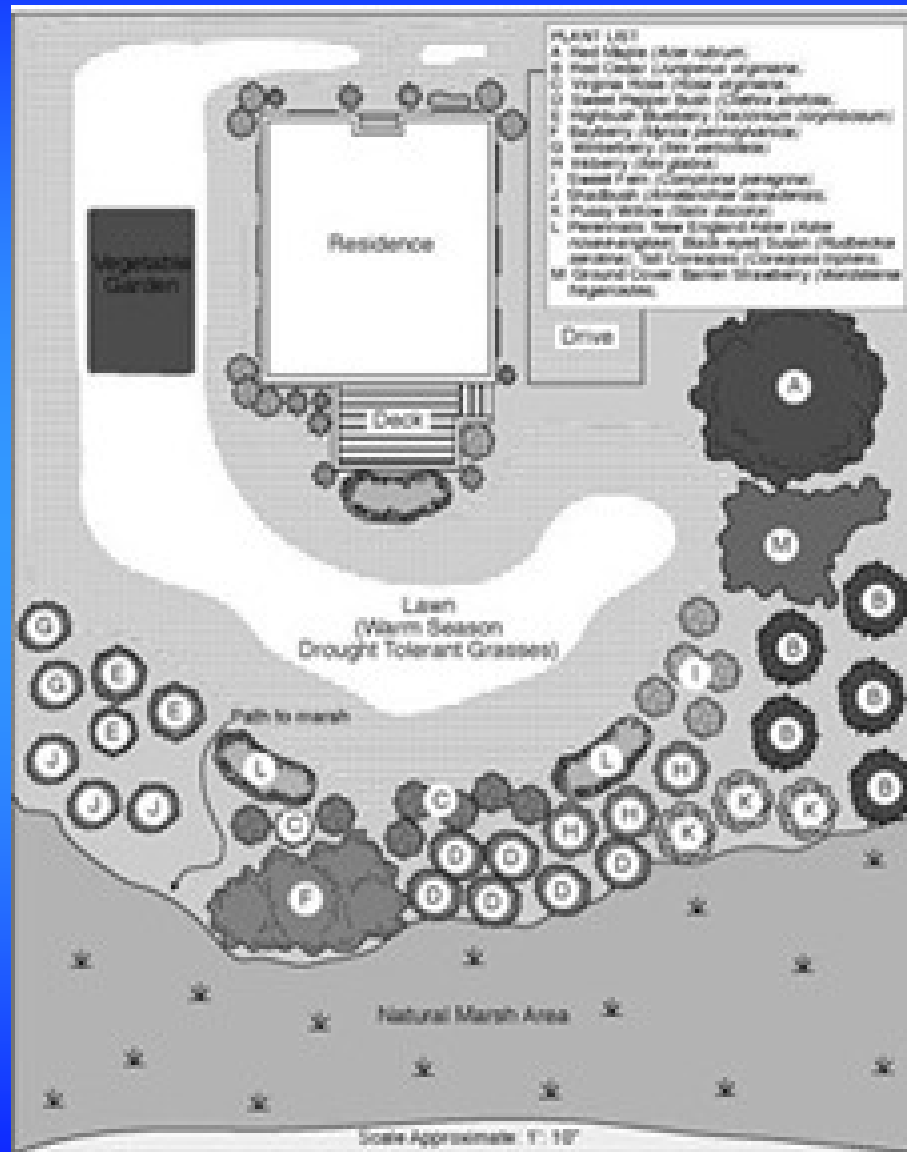
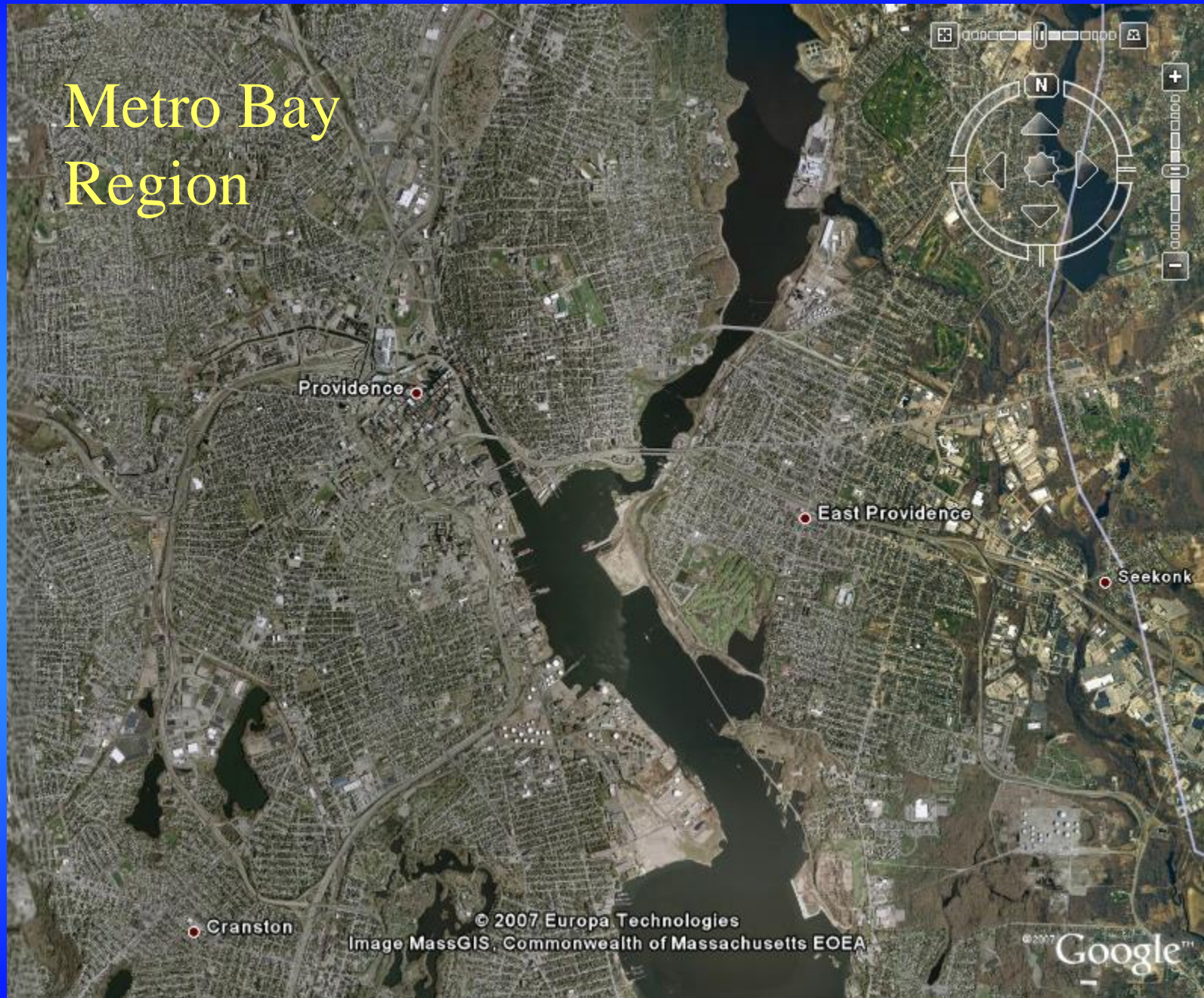


Image courtesy  
of Save The Bay

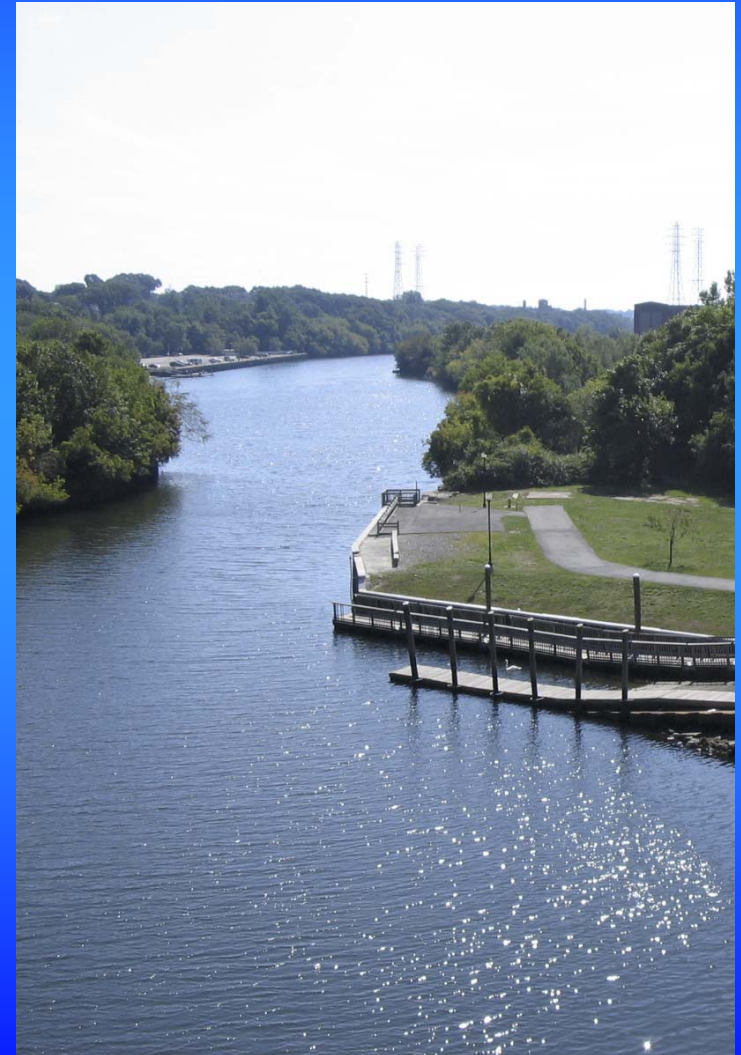
# Metro Bay Region





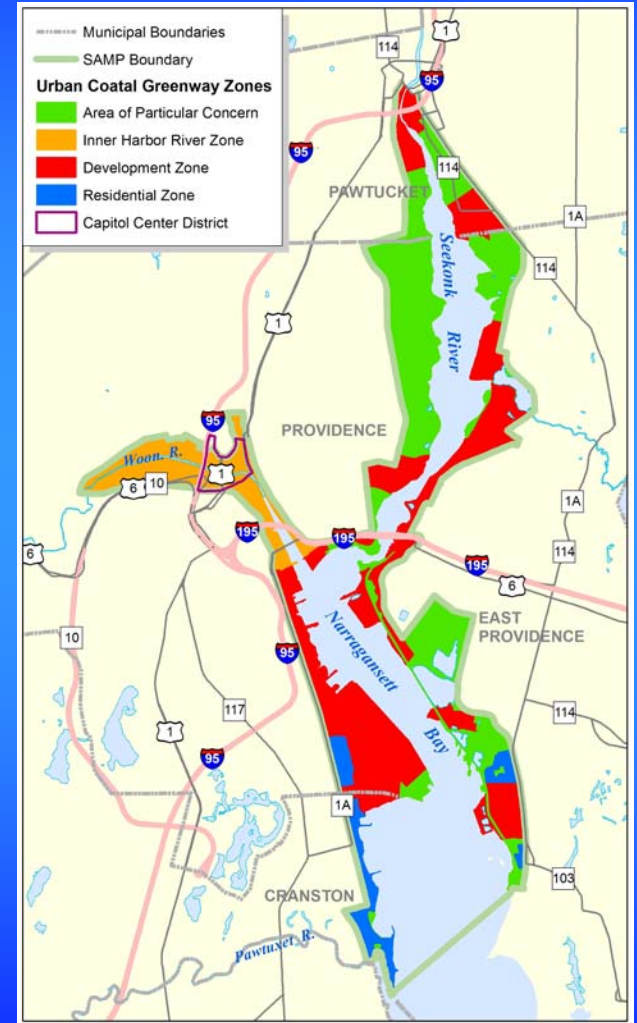
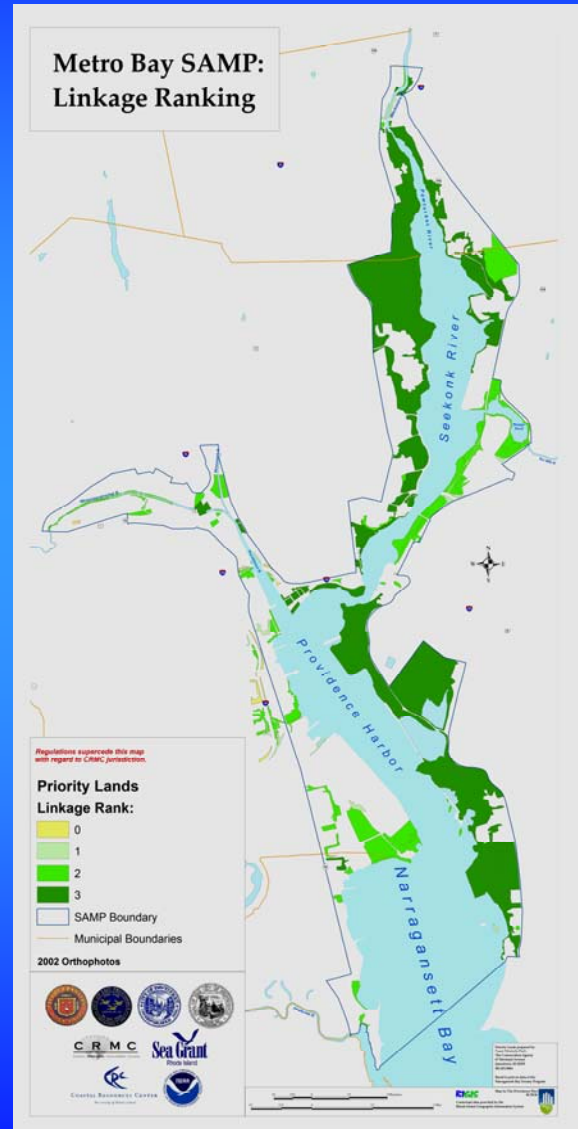
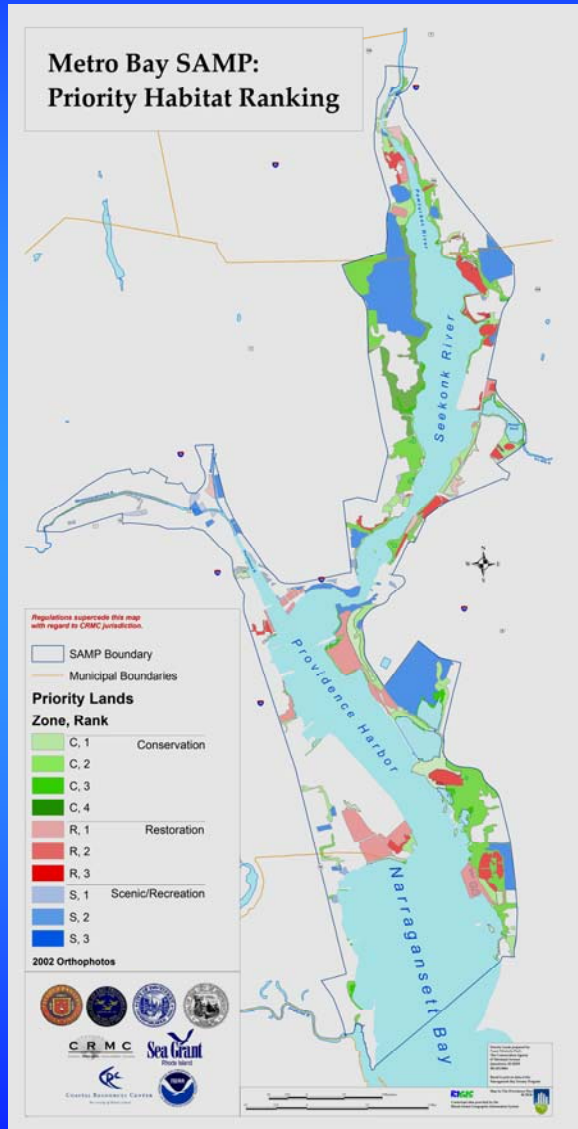
# The Challenge: A New Coastal Buffer Policy that...

- Acknowledges constraints of coastal *urban* redevelopment.
- *Protects or restores* coastal habitat.
- *Streamlines* permitting while allowing *flexibility* in meeting regulatory requirements.
- Reduces variance requests and increases *public benefit*.
- Increases *consistency* and *predictability* of process.





# Multiple Data Set Analyses to Determine UCG Zones



# Urban Coastal Greenways Policy

## For the Metro Bay Region

Cranston, East Providence, Pawtucket, and Providence

### An Amendment to the Providence Harbor Special Area Management Plan



Adopted by the RI Coastal Resources Management Council  
on October 10, 2006



# Main Goals of the UCG Policy

- 15% Vegetation of Entire Development Site
  - Sustainable Vegetation
- 100% Stormwater Management
- Provide Public Access
- Flexible Greenway Widths
  - by UCG Zone
  - Exceptions for “Small Parcels”
  - Compensation Options (i.e., public amenities or habitat restoration fund)





# 100% Stormwater Management

- Onsite treatment of the water quality volume (first inch of stormwater runoff).
- Requirement for Low Impact Development (LID) practices (i.e., bioretention, filter strips, green roofs, etc.) and methods that support infiltration and groundwater recharge.



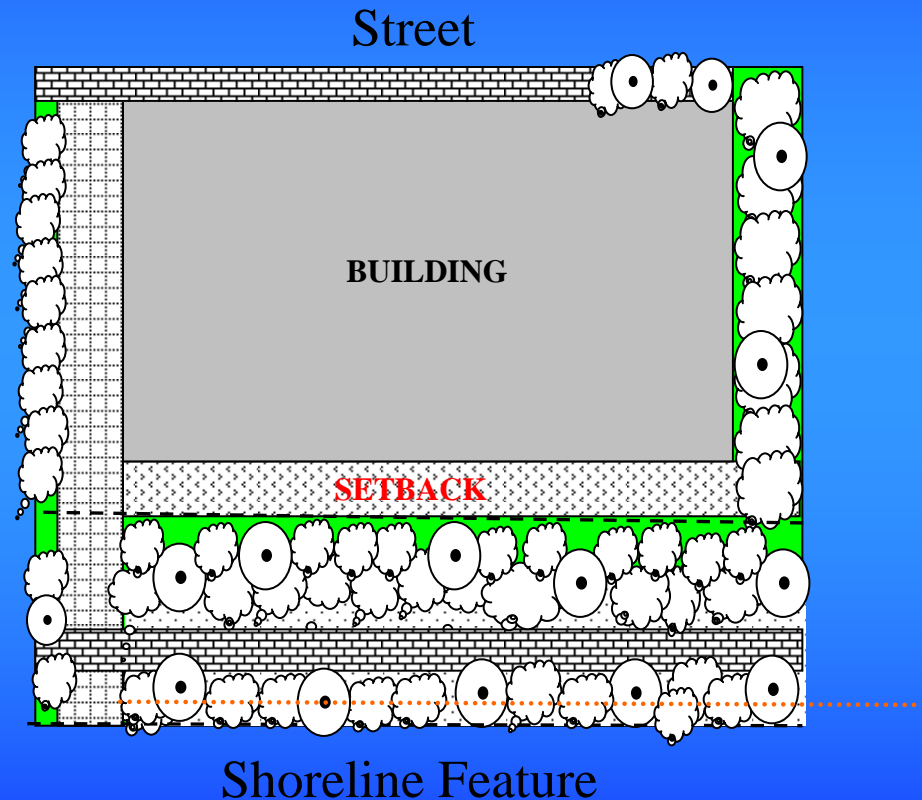
Source: Claytor 2005





# 15% Vegetation Requirement

- Sustainably landscaped.
- May include green roofs, rain gardens, landscaping elements, surface stormwater treatments, etc.
- “Appropriate mix” of trees, shrubs, & low-maintenance grasses.



## Public Access

- **Continuous alongshore access (minimum 8' wide).**
- **Arterial (perpendicular) access connects public sidewalk to the alongshore access pathway.**
- **Pervious surfaces, supportive of emergency vehicles where necessary and ADA compliant.**
- **At least 2 parking spaces adjacent to access point and additional space/100' linear feet of shoreline.**

## The UCG Policy Will...

1. Streamline the permitting process for appropriate redevelopment and make the process more predictable;
2. Increase public access to and along the coast; and
3. Protect ecologically valuable habitat corridors within the urban setting.



# Internet Map Service (IMS) Application

http://204.17.79.245/website/samp1/viewer.htm - Windows Internet Explorer

http://204.17.79.245/website/samp1/viewer.htm

File Edit View Favorites Tools Help

http://204.17.79.245/website/samp1/viewer.htm

METRO BAY SAMP

Zoom In Zoom Out Zoom Full extent Zoom to Active Zoom Last Pan Hotlink Identify Query Measure Set Units Buffer Select Rectangle Clear Selection Print CreateURL

Help Layers Tutorial HOME

Map created with ArcIMS - Copyright (C) 1992-2007 ESRI Inc.

Zoom In Zoom to Scale 1: 658 Go

start "In" Wed 2/26/2007 ... Inbox - Microsoft Out... http://204.17.79.245... Windows Media Player CRM\_RI-UCG/030707...

**LAYERS**

- Parcel Outlines
- Plat/Lot Labels
- Aerial Photography (2002)
- Roads
- Inland Water Features
- Boundaries
  - SAMP Boundary
  - Urban Coastal Greenway
  - CRMC Water Zones
- Hazard-Related
- Infrastructure
- Municipal Visioning Plans
- Conservation/Restoration
- Biological (NBO)
- Land Use
- Census

**Legend**

- Capital Center District
- SAMP Boundary
- Urban Coastal Green Zones**
  - Area of Particular Co
  - Development Zone
  - Inner Harbor River Zi
  - Residential Zone
  - RI Municipalities



# Seekonk River East Pointe Project – East Providence



Google™

# Kettle Point East Providence





# Dynamo House Project – Inner Providence Harbor



© 2007 Europa Technologies

© 2007 Google™

# Example of a Restored Coastal Buffer

## Save The Bay – Fields Point, Providence



Initial planting – May 2005



June 2006

Photos courtesy of Save The Bay





# METRO BAY SAMP



revitalizing northern narragansett bay

CRANSTON • EAST PROVIDENCE • PAWTUCKET • PROVIDENCE

*Contact us for more information*

*RI Coastal Resources Management Council*

**James Boyd - Coastal Policy Analyst**

**Voice: 401.783.3370**

**Fax: 401.783.3767**

**Email: [jboyd@crmc.ri.gov](mailto:jboyd@crmc.ri.gov)**

**Web: [www.crmc.ri.gov](http://www.crmc.ri.gov)**

