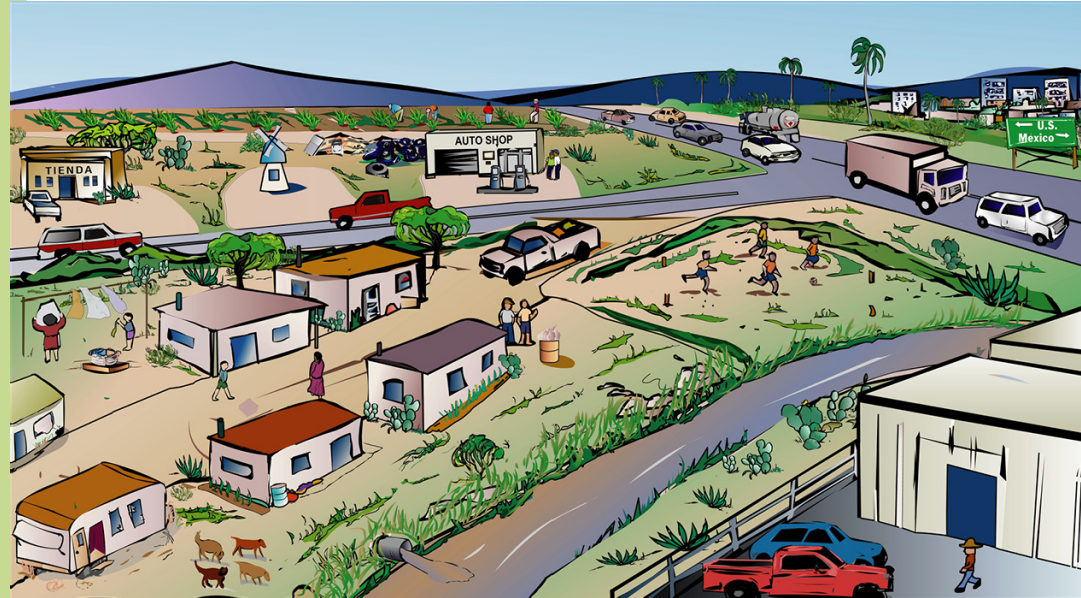
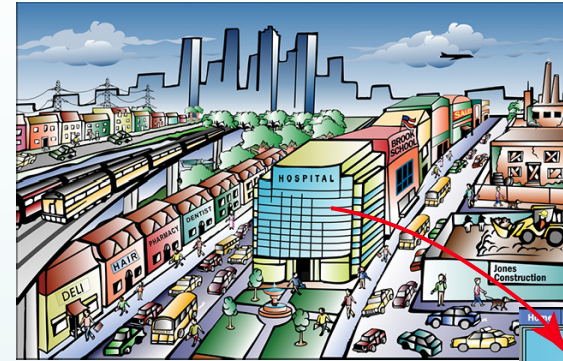


Tox Town



<http://toxtown.nlm.nih.gov>

Toxic chemicals and environmental health risks where you live and work



Take a Closer Look

Open a cutaway view of a hospital, home, school, or office for inside information on environmental hazards.

Defining Toxic Chemicals

Nontechnical descriptions about pesticides and more than 20 other toxic chemicals answer questions like

- What are pesticides?
- How might I be exposed?
- How can pesticides affect my health?

Environmental Health Concerns

Molds, noise, pest control, air quality, drinking water, occupational hazards, and safety issues are just some of the health concerns pictured and explained in Tox Town.



Picture This

Click on a chemical to see where it might be found in a neighborhood and to learn more about it.