



**Appendix G**

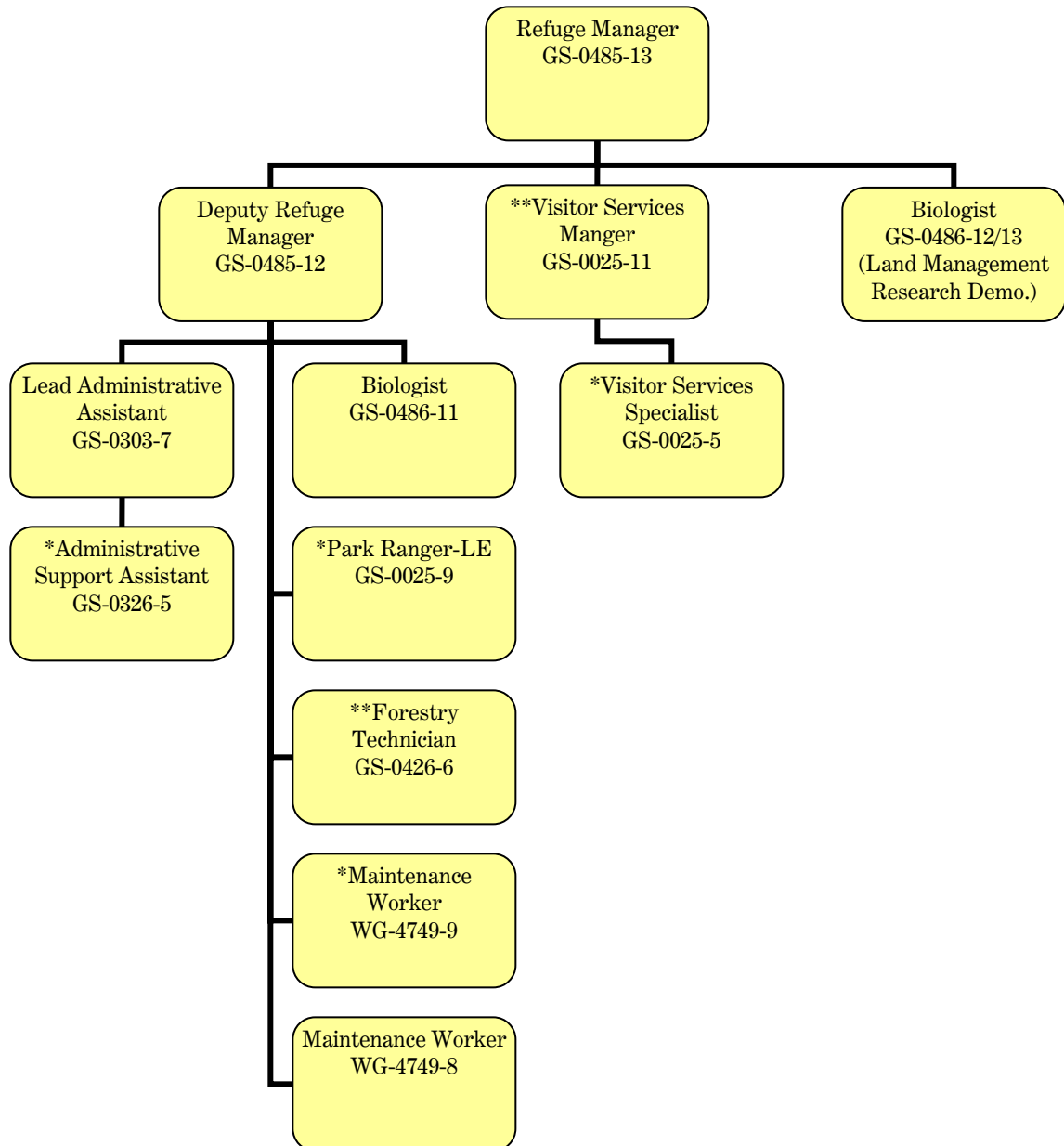
*Least tern chick*

**Staffing Charts**

- Alternative A
- Alternative B
- Alternative C

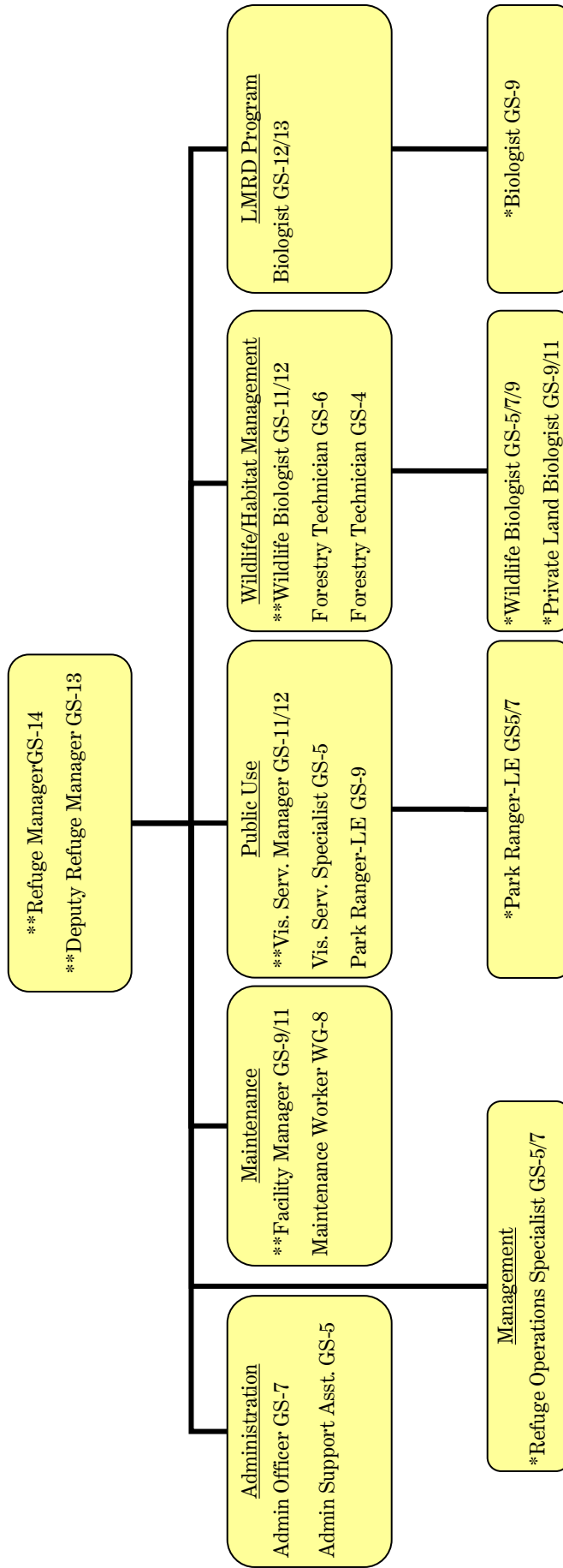


## Alternative A. Current Management



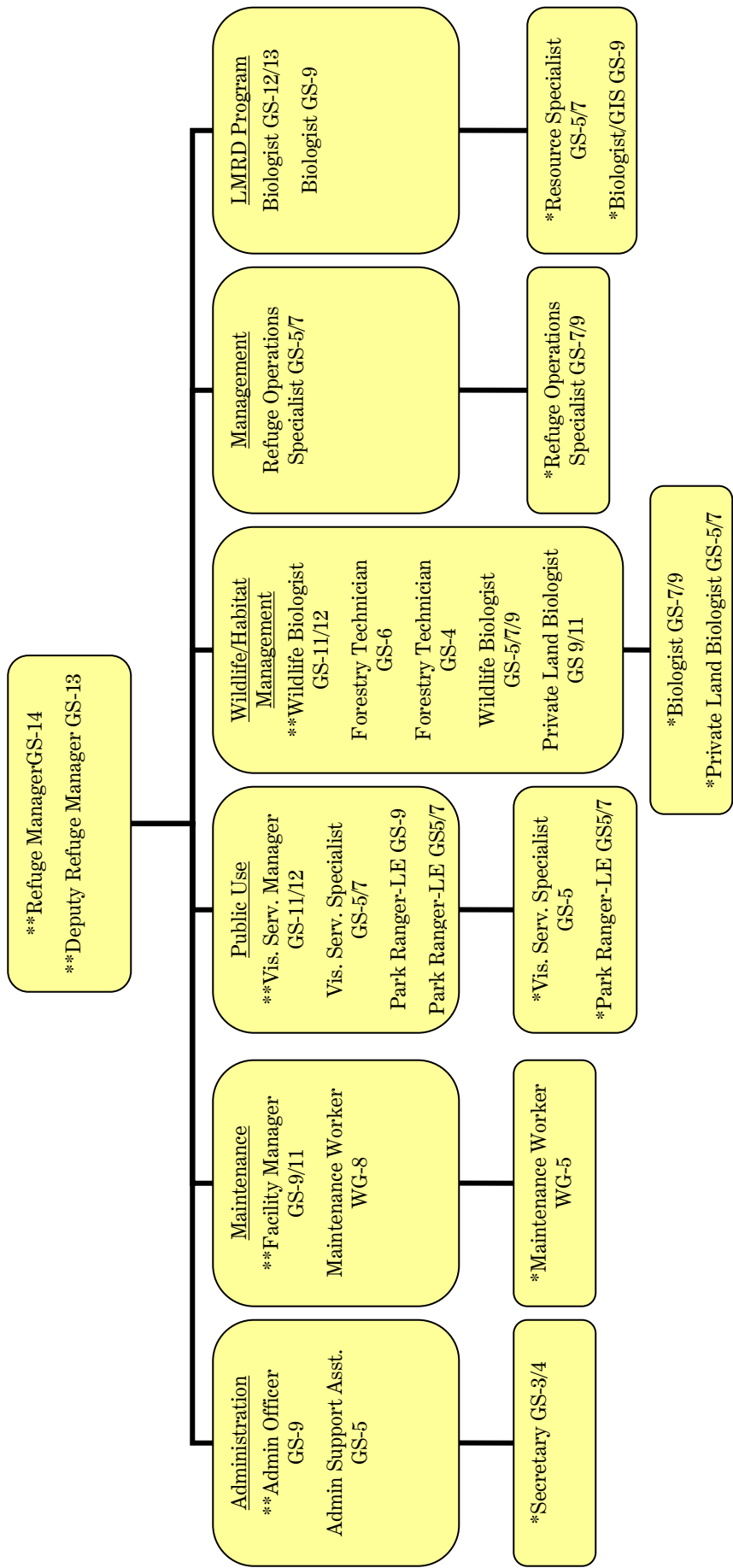
\* Approved tier 1 projects  
 \*\* Current vacant positions

# Alternative B. Preferred Alternative



\*\* New grade level or title for existing position  
 \* New position for CCP Alternative B  
 All other positions are current and approved.

# Alternative C



- \*\* New grade level or title for existing position
  - \* New position for CCP alternative C
- All other positions are current, approved, or proposed in alternative B

