

# STATISTICAL BASED NON-LINEAR MODEL UPDATING USING FEATURE EXTRACTION

**John F. Schultze, Francois M. Hemez, Scott W. Doebling, and Hoon Sohn**

Engineering Analysis Group (ESA-EA), M/S P946  
Los Alamos National Laboratory  
Los Alamos, New Mexico 87545

## ABSTRACT

This research presents a new method to improve analytical model fidelity for non-linear systems. The approach investigates several mechanisms to assist the analyst in updating an analytical model based on experimental data and statistical analysis of parameter effects. The first is a new approach at data reduction called **feature extraction**. This is an expansion of the update metrics to include specific phenomena or character of the response that is critical to model application. This is an extension of the classical linear updating paradigm of utilizing the eigen-parameters or FRF's to include such devices as peak acceleration, time of arrival or standard deviation of model error. The next expansion of the updating process is the inclusion of statistical based parameter analysis to quantify the effects of uncertain or significant effect parameters in the construction of a **meta-model**. This provides indicators of the statistical variation associated with parameters as well as confidence intervals on the coefficients of the resulting meta-model. Also included in this method is the investigation of linear parameter effect screening using a partial factorial variable array for simulation. This is intended to aid the analyst in eliminating from the investigation the parameters that do not have a significant variation effect on the feature metric. Finally an investigation of the model to replicate the measured response variation is examined.

## NOMENCLATURE

The recommended 'Standard Notation for Modal Testing & Analysis' is used throughout this paper, see Reference [1].

## 1 MOTIVATION

Current model updating methods in structural dynamics are general based on linear assumptions and do not have a quantifiable confidence index of model components. Several methods use either the measured eigen-parameters or FRFs. These techniques commonly attempt to either map the experimental information to the model space or the converse. This results in a confounding of system information through the data expansion or condensation. Identified errors are associated with specific parameters or

physical regions of a model. There is normally little evaluation, from either a Design of Experiments (DoE) or statistical approach to quantify the model update mechanism for a range of applications and confidence intervals

Development of a new method based on use of response 'features' and a DoE approach parameter variation to updating analytical models is examined. This method is applicable to time-varying non-linear systems where classical methods often do not succeed. This method also provides for confidence indications of model components.

A 'feature' is an identified quantity from the response data. This could be as simple as the peak level of a single response record to a more coupled metric such as the standard deviation of model error over the entire response space. The former is one of the metric evaluated in this paper and the latter is currently under investigation for a different model. A 'feature', by its nature, is a general term and is specified by the analyst. Under this guideline the traditional update choices of eigen-parameters would qualify as features, though their application is only meaningful for linear systems.

## 2 METHOD

A flowchart of the proposed method is shown in Figure 1. This development in this paper will follow this guide. The method is iterative in nature and the selection of features is dependent on the analyst's goals and insights. In some instances, iterations will be performed within steps and in most cases at least some redefinition/refinement of parameters and their levels is necessary.

## Feature Based Model Updating

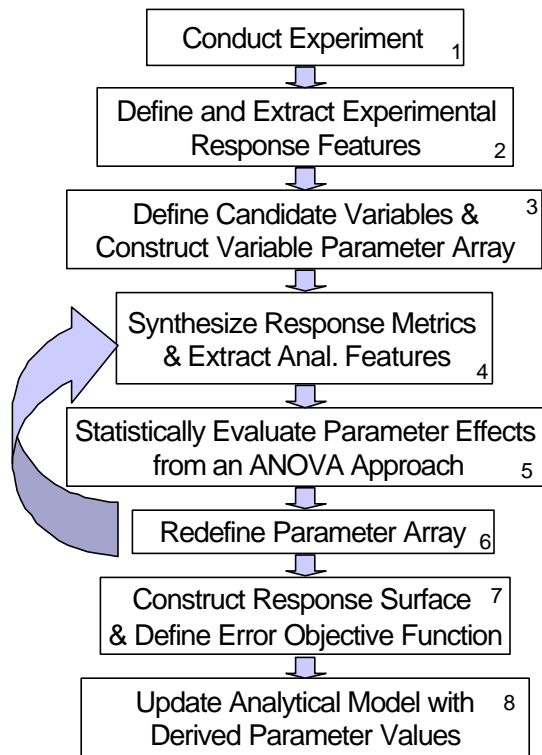


Figure 1. Model Updating Method Overview

The following sections step through this process, Section 3 examines Blocks 1-2, Section 4 covers Blocks 3-4 and Section 5 discusses Blocks 5-8.

### 3 EXPERIMENTAL DEFINITION

In this Section, a brief description of the impact test experiment performed in the summer of 1999 at Los Alamos National Laboratory is provided. The application is a high-frequency shock that features a component characterized by a nonlinear, visco-elastic material behavior. The experimental setup and the corresponding modeling are summarized. More details can be obtained from References [2] and [3]. Issues such as the variability of the experiment, the model-based sensitivity study, the statistical parameter effect analysis and the optimization of the numerical model are introduced and briefly discussed.

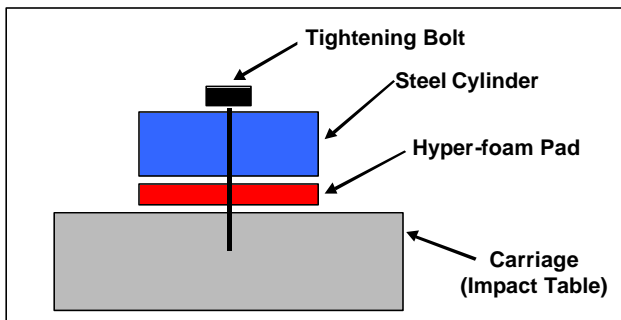


Figure 2. LANL Impact Test Assembly

### 3.1 Experiment Setup

The impact test consists of dropping from various heights a carriage (drop table) to which are attached a layer of hyper-elastic material and a steel cylinder. Upon impact on a concrete floor, a shock wave is generated that propagates to the hyper-elastic layer. It compresses the steel cylinder to cause elastic and plastic strains during a few milli-seconds. Figure 2 illustrates the cylinder/pad/carriage assembly. A photograph of the test setup is shown in Figure 3.

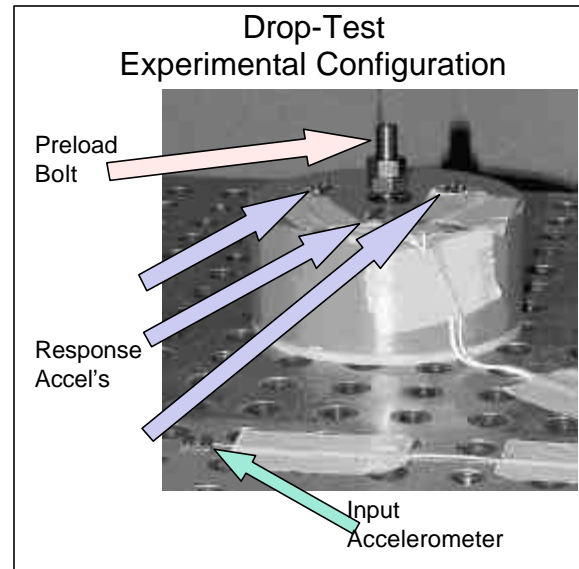


Figure 3. LANL Impact Test Set-up

It can be observed from Figure 3, that four acceleration measurements are collected during each test. The input acceleration is measured on the top surface of the carriage and three output accelerations are measured on top of the steel cylinder. Another important feature of the experiment is the double bolt used to tighten the cylinder and foam (see Figure 3). This assembly technique generates a pre-load that depends on the amount of torque applied. As explained in the following, the pre-load value turns out to be a critical parameter of the numerical simulation. Unfortunately, it was not measured during the experiments, therefore, defining an important source of uncertainty and variability.

### 3.2 Purpose of the Experiment

The primary purpose of this test is to infer from the measured input/output acceleration data the 'best possible' material model.

The difficulty of recasting this inverse problem as a conventional finite element model-updating problem comes from the following facts:

- 1) Nonlinearity such as the hyper-foam material and contact must be handled by defining appropriate 'features' from the system's response;
- 2) Parameter variability and uncertainty about the experiment must be identified and propagated throughout the forward calculations;

Prior to performing any optimization of the numerical model, the expensive computer simulations must be replaced by equivalent, fast running ‘meta-models’ that capture all dominant parameter effects yet remain computationally simple [4]. A meta-model in this context is a mapping of the relation between the parameter variation and the synthesized response feature. In an ideal case, a meta model represents the same relation that the large scale, often Finite or Boundary Element, model but with a much smaller form. This results in a computationally efficient mechanism to base updates on, hence a meta-model is often called a ‘fast-running’ parameter model.

### 3.3 Variability

Since we were concerned with environmental variability and we suspected that several sources of uncertainty would contaminate the experiment, the impact tests were repeated several times to collect multiple data sets from which the repeatability could be assessed. Acceleration signals measured during these tests are depicted in Figures 4-5. The carriage is dropped from an initial height of 13 inches (0.33 meters) and the hyper-foam pad used in this configuration is 0.25 inch thick (6.3 mm). A blow-up of the peak acceleration signals collected during ten ‘identical’ tests at sensor #1 is shown in Figure 5.

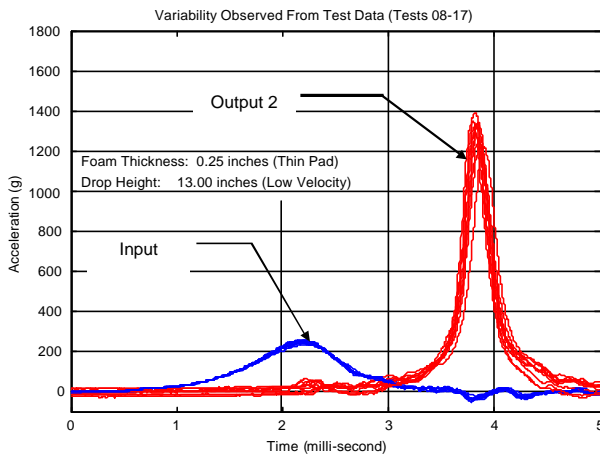


Figure 4. Experimental Variation, Input and Output 2

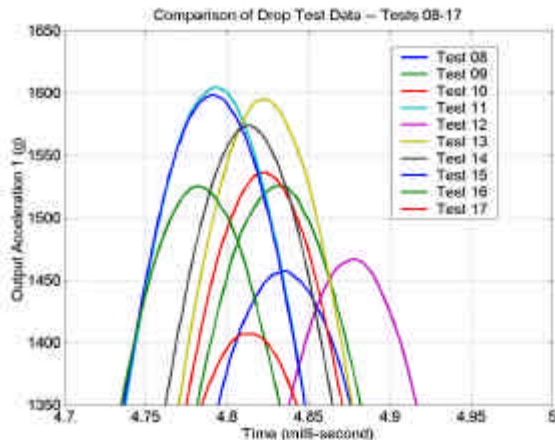


Figure 5. Variability of the Acceleration Response

Overall, it can be seen that peak values vary by 4.4% while the corresponding times of arrival vary by 0.6% only.<sup>1</sup> Although small, ignoring this variability of the peak response may result into predictions erroneous by several hundred g's, which may yield catastrophic consequences for the design purpose.

## 4 PARAMETER SELECTION AND LEVEL DEFINITION

Following identification of ‘features’, selection of design variables is performed. This process blends two primary considerations, mechanisms that will likely influence the feature and quantities that are difficult to quantify or control in a physical experiment.

### 4.1 Definition of initial parameter set

The initial eight variables chosen for this experimentation were;

- A. Angle 1 (impact angle of drop-table) varied from 0 to 2 degree initially, refined to 0 to 1.
- B. Angle 2 (impact angle of drop-table, perpendicular to Angle 1) varied from 0 to 2 degree initially, refined to 0 to 1.
- C. Bolt Pre-load varied from 0 to 500 psi.
- D. Dilation of the stress axis of the visco-elastic model initially varied from .8 to 1.2.
- E. Dilation of the strain axis of the visco-elastic model, initially varied from .8 to 1.2, refined to .8 to 1.
- F. Scaling of input (calibration of sensor), varied from .9 to 1.1.
- G. Friction coefficient between steel and visco-elastic components, initially varied from 0 to 1.
- H. Bulk Viscosity scale factor (defines deformation of visco-elastic elements), initially varied from 0 to 1

These initial ranges were selected primarily based on experimental considerations and a desire to span as much of the design space as reasonable. These were later refined to reflect two main necessities. When Variable 5 (strain dilation) was above 1 the simulation software produced unrealistic or foreshortened output. Variables 1 and 2 required small perturbations ( $10^{-2}$  deg) from zero to accommodate simulation numerical singularities..

### 4.2 Simulation Model Development

In an effort to match the test data, several finite element models were developed by varying, among other things, the angles of impact, the amount of bolt pre-load, the material's constitutive law and the amount of friction at the interface between various components. Introducing two independent angles of impact was important for capturing the asymmetry of the acceleration response.<sup>2</sup> Table 1 summarizes the input

<sup>1</sup> Defined as the ratio of the standard deviation to the mean value.

<sup>2</sup> A cylinder/pad/carriage assembly that impacts the floor perfectly horizontally would generate three identical responses. Since this was clearly not observed when comparing the acceleration signals collected during ten “identical” tests, it was concluded that a small free-play in the alignment of the central collar had to be introduced in the numerical model.

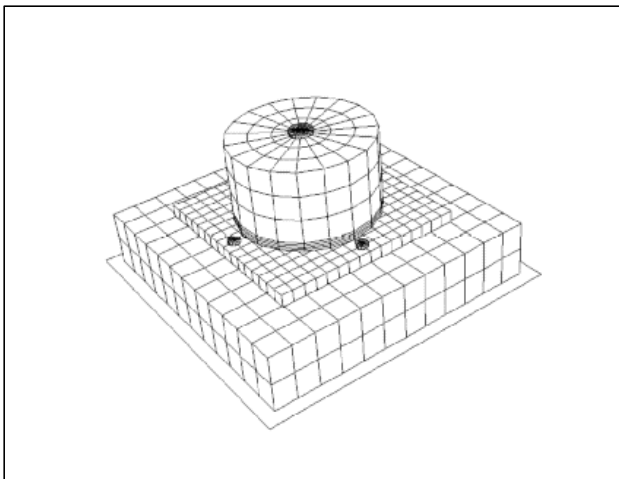
parameters that define the numerical simulation. They consist of physical, deterministic quantities such as the material model; physical, stochastic quantities (such as the bolt pre-load); and numerical coefficients (such as the bulk viscosity that controls the rate of deformation of the volume elements used in the discretization).

**Table 1. Statistical Distributions**

Variable Number	Physical Description	Did This Parameter Vary From Test to Test?	Assumed Statistical Distribution
A	First Angle of Impact	Very Likely	Uniform
B	Second Angle of Impact	Very Likely	Uniform
C	Bolt Pre-load	Very Likely	Uniform
D	Scaling for Stress Values	No <sup>1</sup>	Uniform
E	Scaling for Strain Values	No <sup>1</sup>	Uniform
F	Scaling for Input Acceleration	Likely	Uniform
G	Friction Coefficient	No <sup>2</sup>	Uniform
H	Linear Bulk Viscosity	No <sup>2</sup>	Uniform

<sup>1</sup> The same foam pad was used during testing. These coefficients (#D and #E) should therefore be constant.

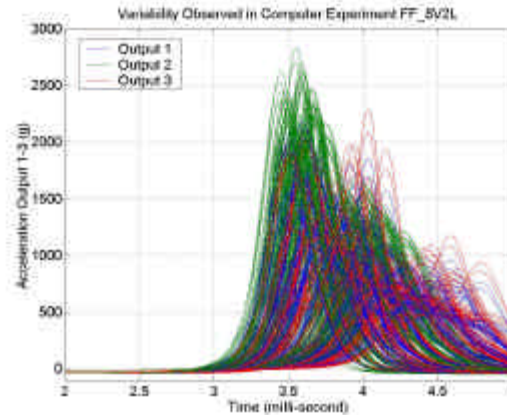
<sup>2</sup> These variables (#G and #H) are numerical coefficients introduced in the simulation for stabilizing the solution. They should therefore be constant



**Figure 6. 3D Model of the LANL Drop-test.**

Figure 6 illustrates the finite element model used for numerical simulation. The analysis program used for these calculations is HKS/Abaqus-Explicit, a general-purpose package for finite element modeling of nonlinear structural dynamics [5]. It features an explicit time integration

algorithm, which is convenient when dealing with nonlinear material behavior, potential sources of impact or contact, and high frequency excitations. The model is composed of 963 nodes, 544 C3D8R volume elements and two contact pairs located at the cylinder/pad interface and the pad/carriage interface. This modeling yields a total of 2,889 degrees of freedom composed of structural translations in three directions and Lagrange multipliers defined for handling the contact constraints. A typical analysis running on a single processor of the Laboratory's ASCI platform BlueMountain<sup>3</sup> is executed in approximately 10 minutes of CPU time.



**Figure 7. Full Factorial Design of Computer Experiments (8 variables, 2 levels).**

Figure 7 illustrates the total variability observed when the eight variables defined in Table 1 are varied. To analyze the variability, a fully populated factorial design of computer experiments is investigated where each variable is set either to its lower bound or to its upper bound and all possible combinations of input variables are defined. Therefore, a total of  $2^8 = 256$  numerical simulations must be analyzed.

It is clear from Figures 4 and 7 that the variability of the numerical simulation is much greater than the variability observed during testing. As a result, the first step of test-analysis correlation consists in designing a 'screening' experiment that must achieve the following two objectives. First, the range of variation of each input parameter must be narrowed down in a manner that stays consistent with test results. Second, the main effects of the experiment must be identified in a statistical manner as opposed to performing a local sensitivity study.

It is emphasized that multi-level full factorial analyses would typically not be accessible for complex engineering applications due to the lack of time or computational power [6]. This is the reason why other designs of experiments are analyzed in the following Sections. The Taguchi, orthogonal array designs used below provide essentially the same information at a fraction of the computational requirement.

<sup>3</sup> The computing module of the Accelerated Strategic Computing Initiative (ASCI) platform BlueMountain is a cluster of 64 Silicon Graphics Origin2000 computers, each composed of 128 R10010 chips.

### 4.3 Array Construction

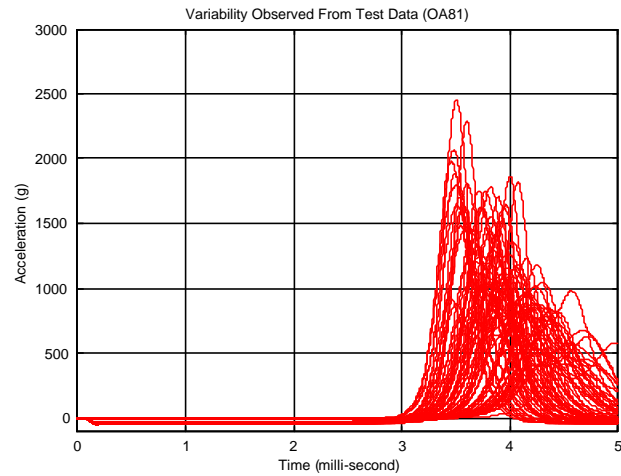
To extract the parameters that have the most significant impact on the response features the relation was examined using an Analysis of Variation (ANOVA) approach. The parameter levels for the analytical simulation (Abaqus/FEA) were determined by defining probability distributions and ranges for each of the candidates (Table 2). The initial investigation used three non-overlapping test matrices. The first, OA27, was an orthogonal (Taguchi L27) array for three levels and the eight chosen factors with a total of 27 runs[7]. The next case, OA81, was an orthogonal array with 81 runs. Finally the last set of the first ensemble was a two level full factorial, FF256, with 256 runs.

The essential premise is that by using a subset of the design space (OA27 or OA81), the dominant main effects could be determined and the parameter set could then be down-selected for further analysis and creation of a response surface model. In these tests, the dominant character of OA27 and OA81 were compared with the results of FF256. It is critical to the application of this approach that a well-chosen subset of the design space is shown to be sufficient for parameter count reduction. In cases where the number of parameters is initially large, creation of a Full Factorial Analysis (FFA) is impractical if not impossible. Also, typically it is only prudent to use a two-level FFA design to keep the number of runs to a tractable amount. This results in information at the boundary of the design space, but not much about the behavior structure within. This is analogous to the numerical integration methods where evaluation points are chosen inside the interval to improve performance over boundary evaluation methods.

**Table 2. Design of Experiments Based on Orthogonal Arrays (3 Levels)<sup>1</sup>**

Variable Number	Interval 1 (Lower; Mid-point; Upper)	Interval 2 (Lower; Mid-point; Upper)	Interval 3 (Lower; Mid-point; Upper)
A	(0.0; <b>0.167</b> ; 0.333)	(0.333; <b>0.5</b> ; 0.667)	(0.667; <b>0.883</b> ; 1.0)
B	(0.0; <b>0.167</b> ; 0.333)	(0.333; <b>0.5</b> ; 0.667)	(0.667; <b>0.883</b> ; 1.0)
C	(0.0; <b>83.3</b> ; 167.0)	(167.0; <b>250.0</b> ; 333.3)	(333.3; <b>416.7</b> ; 500.0)
D	(0.8; <b>0.867</b> ; 0.933)	(0.933; <b>1.0</b> ; 1.067)	(1.067; <b>1.133</b> ; 1.2)
E	(0.8; <b>0.833</b> ; 0.867)	(0.867; <b>0.9</b> ; 0.933)	(0.933; <b>0.967</b> ; 1.0)
F	(0.9; <b>0.933</b> ; 0.967)	(0.967; <b>1.0</b> ; 1.03)	(1.03; <b>1.07</b> ; 1.1)
G	(0.0; <b>0.167</b> ; 0.333)	(0.333; <b>0.5</b> ; 0.667)	(0.667; <b>0.883</b> ; 1.0)
H	(0.0; <b>0.167</b> ; 0.333)	(0.333; <b>0.5</b> ; 0.667)	(0.667; <b>0.883</b> ; 1.0)

<sup>1</sup> Experiments are designed by selecting three equal-probability intervals for each input parameter and selecting the mid-point of each interval. Mid-point values are assembled into a fractional factorial design.



**Figure 8. FEA Response Variability, Location 2**

Figure 8 shows the variability of the OA81 simulation results. This also spans the experimental variations as the FF256 did, but with much better placement of variable evaluations and less runs.

## 5 STATISTICAL ANALYSIS OF DATA/MODEL SYNTHESIS

Once the simulation is complete it is now appropriate to investigate the significant parameters and develop a model between parameter variation and response feature variation. This is conducted in three phases. First the parameter set is down-selected, that is the dominant variables are identified and retained while less significant ones are reduced out. Next new variable studies are done with a higher number of variables levels and a full factorial approach to develop response surfaces and to extract higher order effects without aliasing. Finally based on the parameter variation to response variation model/response surface set, simulation model update requirements are estimated.

### 5.1 Down-selection

The FEA simulation in this analysis has a self arresting feature that discontinues execution if the dilation of the viscoelastic elements is such that the solution would be suspect if continued. This results in a total of six (6) distinct cases to investigate. The cases with the suffix 'r' denote a reduced set where the runs that were foreshortened were eliminated.

'Dominant' parameters are determined through an ANOVA approach using the statistical analysis software package Design-Expert 6.0/Stat-Ease [8]. The model that is initially fit to the data is a model that is linear in all eight parameters. This is done because the OA27 set only had sufficient runs for linear (or main) effect analysis. This is consistent with the desire to use a subset of the full factorial array for large-scale problems. The main effects with statistically significant contributions were then ranked in order of precedence for down-selection. Statistical significance in this case is those parameters whose effect on response feature variability is greater than would be explained by a normal distribution of noise. Results are summarized in Table 3.

**Table 3. Dominant Parameters**

	OA27	OA27r	OA81	OA81r	FF256	FF256r
Peak G Loc 1	C, H	A, C, B, F	C, A, F, B, H	C, A, B, F	A, C, H, B, E, G	C, A, B, F, G
TOA 1	C, A, B, F, G, H	C, F, A, E	C, A, G, F	C, E, A, F	C, F, A, G, E, B	C, A, F, E, B
Peak G Loc 2	C, H	C, F, B, G	C, F, H	C, F, A, G, E, H	C, H, F, E, G, B	C, F, B, G, E
TOA 2	C, F, G, A, B	C, E, F, G, B, A	C, G, F, E, A	C, E, F, G, B, A	C, F, G, E	C, E, F, G, A, B
Peak G, Loc 3	H	C, A, B	C, A, B, F, H	C, A, B, F, H	C, B, A, H, E	C, A, B, F, G
TOA 3	C, B, F	C, B, F, E	C, B, F, H	C, B, F, E	C, B, F, G, H	C, B, F, E

If points are then assigned to ranking (4 points 1<sup>st</sup>, 3 points 2<sup>nd</sup>, 2 points 3<sup>rd</sup>, 1 point 4<sup>th</sup>, 0 higher) and summed over each test and location, selection of parameters to be retained for model updating and further study can be made. Tables 4 and 5 summarize the parameter contributions scores obtained with the 3 designs.

**Table 4. Parameter Contribution Scores, Sorted by Dataset**

	OA27	OA27r	OA81	OA81r	FF256	FF256r	total
A	4	9	9	10	8	9	49
B	5	9	6	7	7	9	43
C	20	23	24	24	23	24	138
D	0	0	0	0	0	0	0
E	0	5	1	7	2	5	20
F	6	11	11	10	10	11	59
G	2	2	5	2	4	2	17
H	10	0	3	0	5	0	18

**Table 5. Parameter Contribution Scores, Sorted by Feature**

	P G 1	TOA 1	P G 2	TOA 2	P G 3	TOA 3	total
A	17	15	2	1	14	0	49
B	8	2	4	0	11	18	43
C	22	24	24	24	20	24	138
E	0	5	1	11	0	3	20
F	5	11	14	14	3	12	59
G	0	3	3	10	0	1	17
H	5	0	8	0	5	2	18

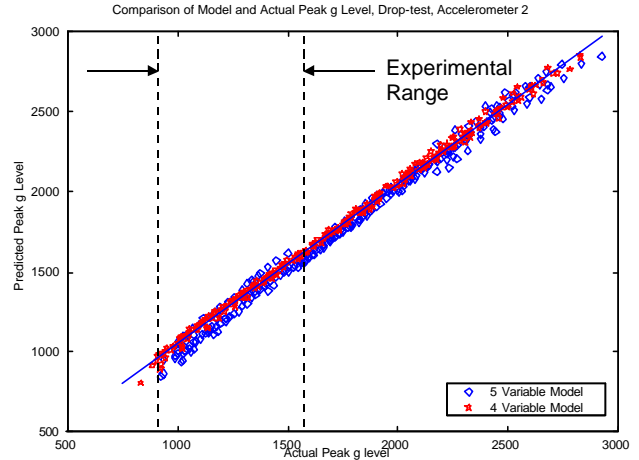
From Table 4, clearly D can be reduced out without a effect on the system response, also since H only appears when there are discrepant runs, it is probably a good candidate for elimination. The two other that look promising for elimination are G and E. It seems from this analysis that A, B, C, and F are the parameters that merit further investigation, with C clearly being dominant.

It seems from Table 5 that some parameter contributions are definitely more sensitive to location (A, B, E, G) while others

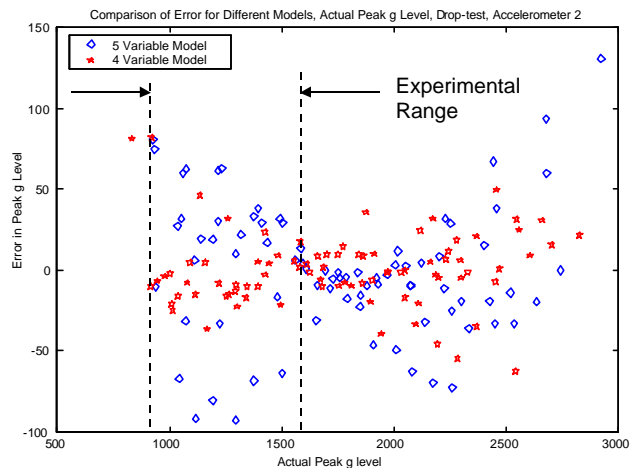
are not (C, F, H). This says that when selecting responses of a system we must sample the geometry as much as feasible. Also from the second table in this set, it is clear that some variables are linked to types of measurement (g's or seconds). For example H is almost strictly associated with peak acceleration, while E has a tight bonding to the time of arrival. In the final recommendation, it appears that both of these should be eliminated from the model.

## 5.2 Response Synthesis

Two sets of follow-on full factorial simulation ensembles were then conducted. The first used the four dominant variables (A, B, C, F) at four levels each, resulting in 256 sets or response data. The second included the top five variables (A, B, C, E, F) at three levels each, resulting in 243 evaluations. The two resulting models (quadratic or two-factor-interaction) were then compared for their ability to estimate the peak response and time of arrival for location 2. These features were selected because they most closely matched the observed response character of the experiment. Only peak acceleration will be shown here since it best demonstrated the differences.



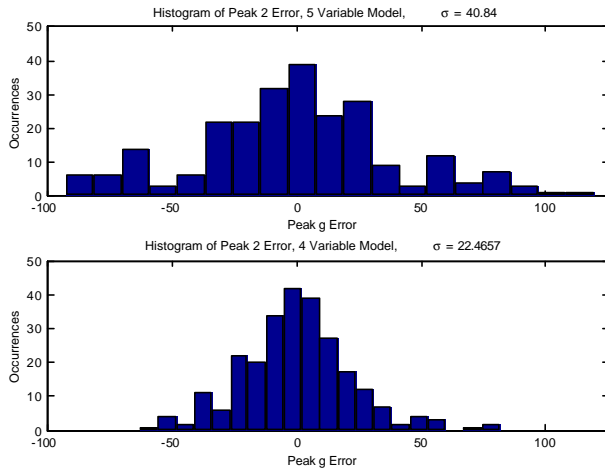
**Figure 9. Model Comparison for Peak Acceleration Prediction**



**Figure 10. Error in Model Prediction of Peak G, Loc. 2**

The four variable array produces better results (in fact in all six features) than the five variable array. As seen in Figure 9, both models predict the peak response well, though the estimates associate with the four variable set (denoted with a star, \*) are clustered more tightly around the ideal functional line. The five variable set (denoted with a  $\diamond$ ) is more dispersed about the ideal.

Figure 10 shows the error between the actual and the model directly. It is clear from the exploded view that the model with five variables has greater error variance.



**Figure 11. Histograms of Model Error in Peak Acceleration Prediction**

In Figure 11, a comparison of error histograms is presented. As evident, the error variance and standard deviations are lower for the four variable array model (4VM). Specifically, the standard deviation for the error in the 4VM is 22.47, while comparable index for the 5VM is 40.84. This indicates two things. First the addition of the fifth variable (and corresponding reduction of one parameter level) did not improve the quality of model. Second the four level model is better at approximating the system even when its parametric model is limited to second order. It should be noted that while a third order function can be fit to the 4VM results, it was not, so that it could be directly compared to the 5VM which is limited to second order function approximations.

A very positive and encouraging result here is that the smaller model was better, that greatly simplifies construction/analysis of response surfaces and optimization of the model variables. This also shows the down-selection process worked well.

### 5.3 Construction of Meta-Models

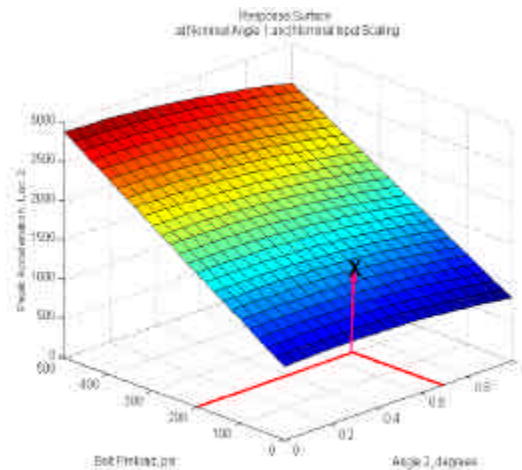
The next step is to infer from test data the optimal values of the input parameters. We briefly introduce the procedure followed when the investigation is restricted to four parameters: the two angles of impact (A, B), the bolt preload (C) and the input scaling (F).

Since a smaller number of input parameters are retained (4 out of 8), a localized computer experiment can be designed to provide a better resolution in the area of interest. The area of interest is here defined as the region in the multi-dimensional feature space where responses measured

during testing are located. As mentioned previously, a full factorial matrix designed from a Taguchi array formed of four levels for each input parameter is analyzed. Then, fast running models are fit to the data. Equation (1) illustrates one of the models typically obtained for the peak acceleration response at sensor #2:

$$\ddot{x}_2^{\text{peak}} = \begin{Bmatrix} -1,538.2 \\ 43.6 \\ 288.4 \\ 2.4 \\ 2,552.8 \\ -391.3 \\ -307.1 \\ -0.0006 \\ 665.7 \\ -0.5 \\ -452.4 \\ 1.5 \end{Bmatrix}^T \begin{Bmatrix} 1 \\ a_1 \\ a_2 \\ P_{\text{bolt}} \\ s_1 \\ a_1^2 \\ a_2^2 \\ P_{\text{bolt}}^2 \\ a_1 * a_2 \\ a_2 * P_{\text{bolt}} \\ a_2 * s_1 \\ P_{\text{bolt}} * s_1 \end{Bmatrix} \quad (1)$$

Instead of fitting multi-dimensional polynomials, statistical models are preferred because in addition to yielding computationally efficient meta-models, they also provide confidence intervals that can be used for assessing the model's goodness-of-fit. For example, each coefficient of the polynomial shown in equation (2) is associated to a statistics that shows how dominant the corresponding effect is. Therefore, equation (2) defines a family of models that can be re-sampled to account for omitted sources of uncertainty (round-off errors, environmental variability, etc.). Re-sampling the model essentially means that decisions would be based on properties of ensembles rather than a single model [9]. In addition, statistical models can be refined to optimize the statistical significance of each individual effect contribution, which may be more important than maximizing the overall goodness-of-fit to the data.



**Figure 12. Optimization of the Meta-Model**

Figure 12 illustrates a 2D response surface obtained from equation (2). The mean acceleration response obtained from

the data collected at sensor #2 is shown as a star. A straightforward optimization provides the optimal values of the input parameters. In this case, a pre-load equal to 200 psi ( $1.38 \times 10^6 \text{ N/m}^2$ ) is obtained together with an impact angle equal to 0.7 degrees. Note that such an approach provides an optimized model capable of reproducing the mean response obtained from test data. It does not guarantee that the variance or other higher statistical moments are captured. Other optimization strategies are discussed in the remainder to address this important issue.

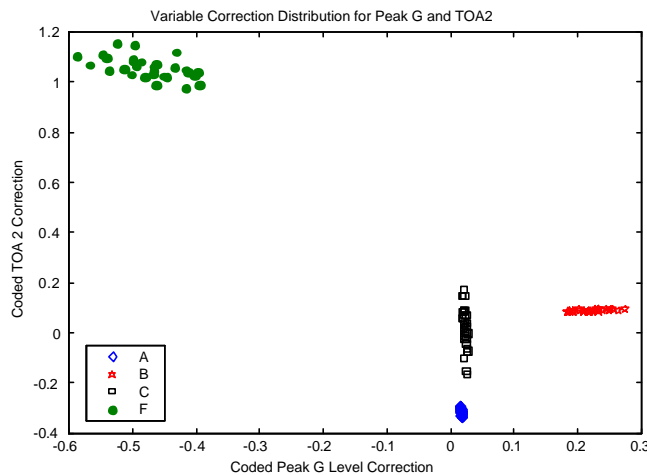
#### 5.4 Objective Function based Optimization

To quantify the application of the model to explain the experimental response variation, an optimization was performed to adjust the analytical model to 'best-match' the physical test results. The objective function chosen was the distance squared between the experimental measured feature and the analytical prediction based on the meta model using variables A, B, C, and F. Explicitly the general form of objective function was,

$$J(\Delta_A, \Delta_B, \Delta_C, \Delta_F) = (ExpFeature - AnalFeature(\Delta_A, \Delta_B, \Delta_C, \Delta_F))^2 \quad [2]$$

where *ExpFeature* is the experimentally measured feature and *AnalFeature* is the feature derived from the meta-model based on the Variable set A, B, C, and F.

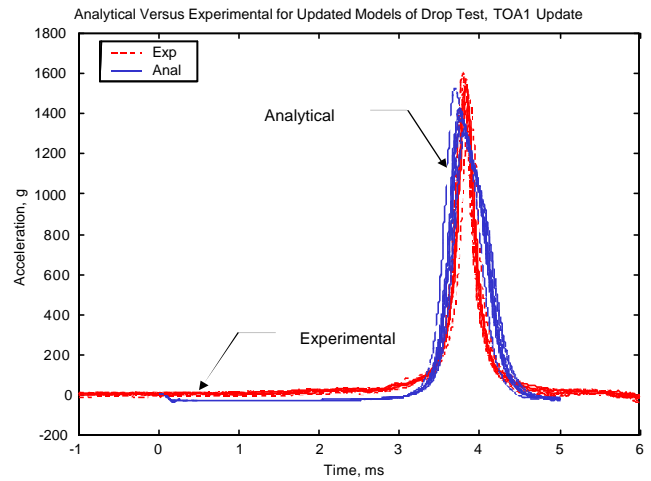
This was performed for two features (Peak 2 G Level and TOA 2) on all thirty experimental responses (three locations, ten tests) that were represented by the analytical model. The results are shown in the figure below. The solution search was conducted with an unconstrained optimization in Matlab using the 'fminsearch' command [10].



**Figure 13. Comparison of Parameter Adjustments based on Peak G and TOA, Output 2**

Several points can be raised by inspection of Figure 13. First, it is necessary to use more than one feature to update a model. Clearly, the TOA feature is more sensitive to changes in C than the Peak Acceleration feature. Also the spread of variation is not uniform indicating that the relative sensitivities are also distinct. The mean (bias) adjustments are also somewhat different but the variations are close to

zero in all but variable F. This says the range of variability should be expanded for A-C and collapsed for F.



**Figure 14. Comparison Between Analytical and Experimental Response Variation**

Figure 18 confirms that the proposed procedure works well for this application. The experimental and corresponding 'meta-model optimized' analytical response has approximately the same variation and response character. This validates the final analytical model and the update procedure well.

## 6 CONCLUSIONS

This research presents a new method to improve analytical model fidelity for non-linear systems. The approach investigates several mechanisms to assist the analyst in updating an analytical model based on experimental data and statistical analysis of parameter effects. The first is a new approach at data reduction called **feature extraction**. The next expansion is the inclusion of statistical based parameter analysis to quantify the effects of uncertain or significant effect parameters in the construction of a **meta-model**. The results from the linear screening, model refinement, variable variation and the response synthesis all are very promising. This should greatly aid the analyst in the update of large scale and non-linear models over the present methods.

## 7 REFERENCES

- [1] Lieven, N.A.J., and Ewins, D.J., 'A Proposal For Standard Notation and Terminology in Modal Analysis,' *10<sup>th</sup> IMAC, International Modal Analysis Conference*, San Diego, CA, Feb. 2-5, 1992, pp. 1414-1419.
- [2] Beardsley, P., Hemez, F.M., and Doebling, S.W., 'Updating Nonlinear Finite Element Models in the Time Domain,' *2<sup>nd</sup> International Workshop on Structural Health Monitoring*, Stanford University, Stanford, CA, Sep. 8-10, 1999, pp. 774-783.
- [3] Hemez, F.M., Doebling, S.W., 'Validation of Nonlinear Modeling From Impact Test Data Using Probability Integration,' *18<sup>th</sup> IMAC, International Modal Analysis*



Conference, San Antonio, TX, Feb. 7-10, 2000, pp. 124-132.

- [4] Hemez, F.M., Doebling, S.W., 'Inversion of Structural Dynamics Simulations: State-of-the-art and Orientations of the Research,' *25<sup>th</sup> ISMA, International Conference in Noise and Vibration Engineering*, Leuven, Belgium, Sep. 13-15, 2000, pp. 403-413.
- [5] **Abaqus/Explicit**, User's Manual, Version 5.8, Hibbitt, Karlsson & Sorensen, Pawtucket, RI, 1998.
- [6] Butler, T. A., F. M. Hemez, J. F. Schultze, H. Soon, S. W. Doebling, 'Model Validation for a Complex Jointed Structure', *19<sup>th</sup> IMAC, International Modal Analysis Conference*, Kissimmee, FL, Feb. 5-8, 2001.
- [7] Hedayat, A.S., Sloane, N.J.A., Stufken, J., **Orthogonal Arrays: Theory and Applications**, Springer-Verlag, NY, 1999.
- [8] **Design-Expert<sup>®</sup> Software**, User's Guide, Version 6.0.1, Stat-Ease, Inc., MN, 2000.
- [9] Rutherford, B., 'A Re-sampling-based Approach to Optimal Experimental Design for Computer Analysis of a Complex System,' *3<sup>rd</sup> DOE/MICS Workshop on the Predictability of Complex Phenomena*, Los Alamos, NM, Dec. 6-8, 1999.
- [10] **Matlab<sup>®</sup> Version 5.3.1**, Mathworks, Cambridge, MA, 1999.