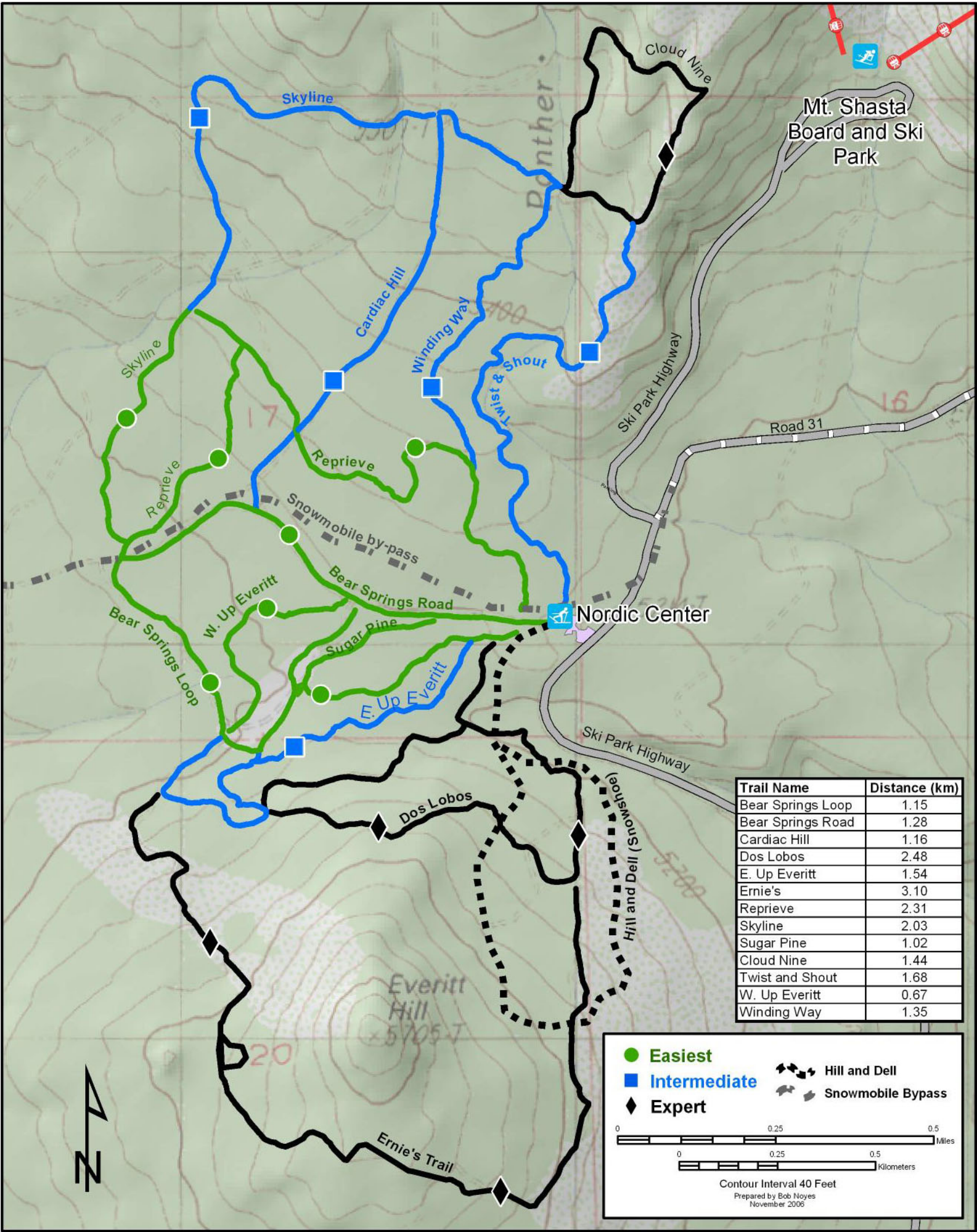


Mt. Shasta Nordic Center



Trail Name	Distance (km)
Bear Springs Loop	1.15
Bear Springs Road	1.28
Cardiac Hill	1.16
Dos Lobos	2.48
E. Up Everitt	1.54
Ernie's	3.10
Reprieve	2.31
Skyline	2.03
Sugar Pine	1.02
Cloud Nine	1.44
Twist and Shout	1.68
W. Up Everitt	0.67
Winding Way	1.35

● **Easiest**
■ **Intermediate**
◆ **Expert**

Hill and Dell
 Snowmobile Bypass

0 0.25 0.5 Miles
 0 0.25 0.5 Kilometers

Contour Interval 40 Feet
 Prepared by Bob Noyes
 November 2006

