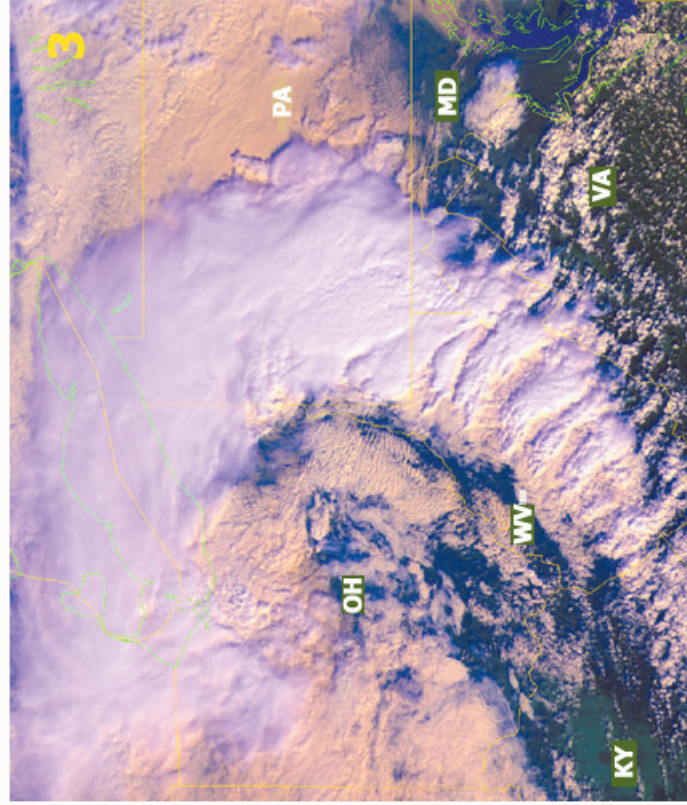
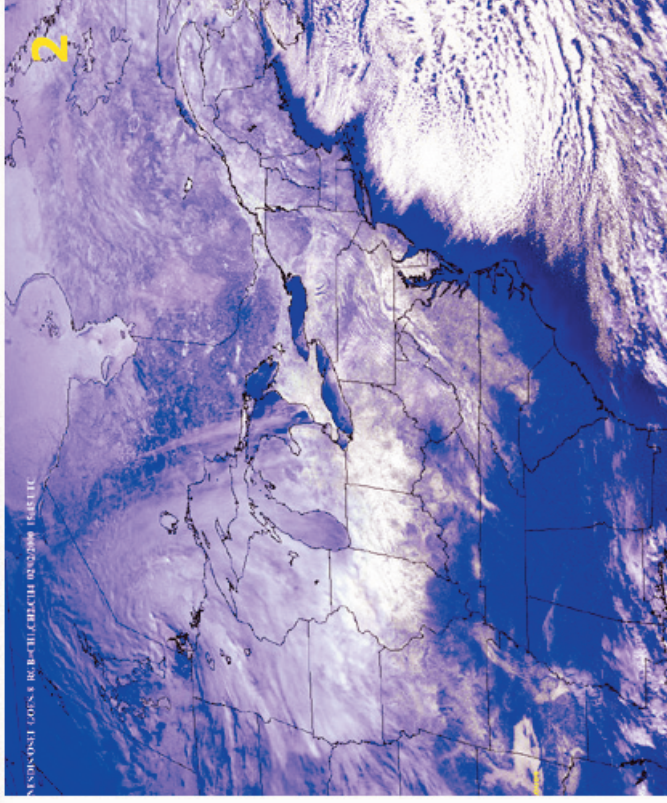
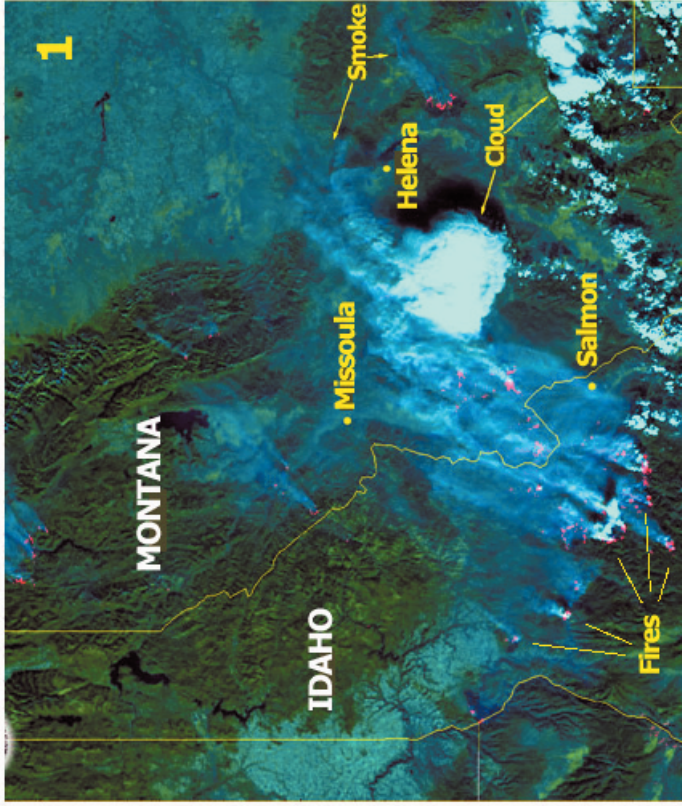


National Oceanic and Atmospheric Administration

National Environmental Satellite, Data, and Information Service



EXAMPLES OF PHENOMENA OBSERVABLE IN NOAA SATELLITE IMAGERY

1. Fires in Idaho and Montana on Aug. 23, 2000 are seen by a NOAA Polar Orbiting Operational Environmental Satellite (POES). Smoke (blue) is seen in a visible wavelength, vegetation (green) in near infrared and fires (red) in thermal infrared.
2. Snowcover from a recent storm is seen by a NOAA Geostationary Operational Environmental Satellite (GOES) on Feb. 2, 2000. Satellites are used to routinely map Northern Hemisphere snow cover.
3. An outbreak of severe thunderstorms along a frontal boundary is seen by a POES bearing down on the Washington, D.C. area on April 9, 1999.

for more information and examples of imagery, visit these web sites:

<http://www.ssd.noaa.gov> (Satellites Services Division home page)

<http://www.osei.noaa.gov> (Operational Significant Event Imagery home page)