

# Response to Hurricanes Katrina and Rita in Louisiana



Janet McAllister, PhD  
Centers for Disease  
Control and  
Prevention  
Ft. Collins, CO

## 3 Disasters hit the State in a month.

- Katrina makes landfall in Southeast Louisiana on Aug. 29.
- Levee's in New Orleans Fail flooding 80% of the City by Aug. 30 and again on Sept 23.
- Rita makes landfall in Southwest Louisiana on Sept. 24.



# State's Mosquito Control Response



# Evaluate Parish Mosquito Control Programs



Cameron Parish

Orleans Parish

## Heavily Damaged Districts (facilities destroyed)

- St. Tammany Parish Mosquito Abatement District
- New Orleans Mosquito and Termite Control Board
- St. Bernard Parish Mosquito Control
- Cameron Parish Mosquito Control

# Business as Unusual

Physical damage to facilities and equipment



# Business as Unusual

- Disrupted communication/fuel/supplies
- Lack of food/water and shelter for employees





# Business as Unusual

Safety issues due to debris/power lines/wild life



# Business as Unusual

Employees must also deal with personal issues



# Business as Unusual

Control methods must be adjusted



# Evaluate Parishes with no Mosquito Control District



# Evaluate Mosquito Problems

<p>East Louisiana (woodland and floodwater species)</p>	<p>West Louisiana (floodwater species)</p>	<p>New Orleans (domestic species followed by floodwater species)</p>
<p><i>Ps. ferox</i> <i>Cx. nigripalpus</i> <i>Ae. atlanticus</i> <i>Ae. sollicitans</i> <i>Ae. vexans</i></p>	<p><i>Ps. columbiae</i> (1 week) <i>Ae. sollicitans</i> <i>Ps. ciliata</i></p>	<p><i>Ae. aegypti</i> (4 weeks) <i>Ae. albopictus</i> (4 weeks) <i>Cx. quinquefasciatus</i> (4 weeks) <i>Ae. vexans</i> (6 weeks) <i>Ae. sollicitans</i> (6 weeks)</p>



# Going Airborne



# Going Airborne





# Criteria for AF Spraying

Stop gap spraying until supplemental contracts with private sector could be put in place

- Mosquito Control District Heavily Damaged by Storms
- Parishes With No Mosquito Control and Prolonged Power Outages Resulting in Population “Living” Out Doors
- Parishes With Some Mosquito Control but Housing Evacuees and Responders in Camps

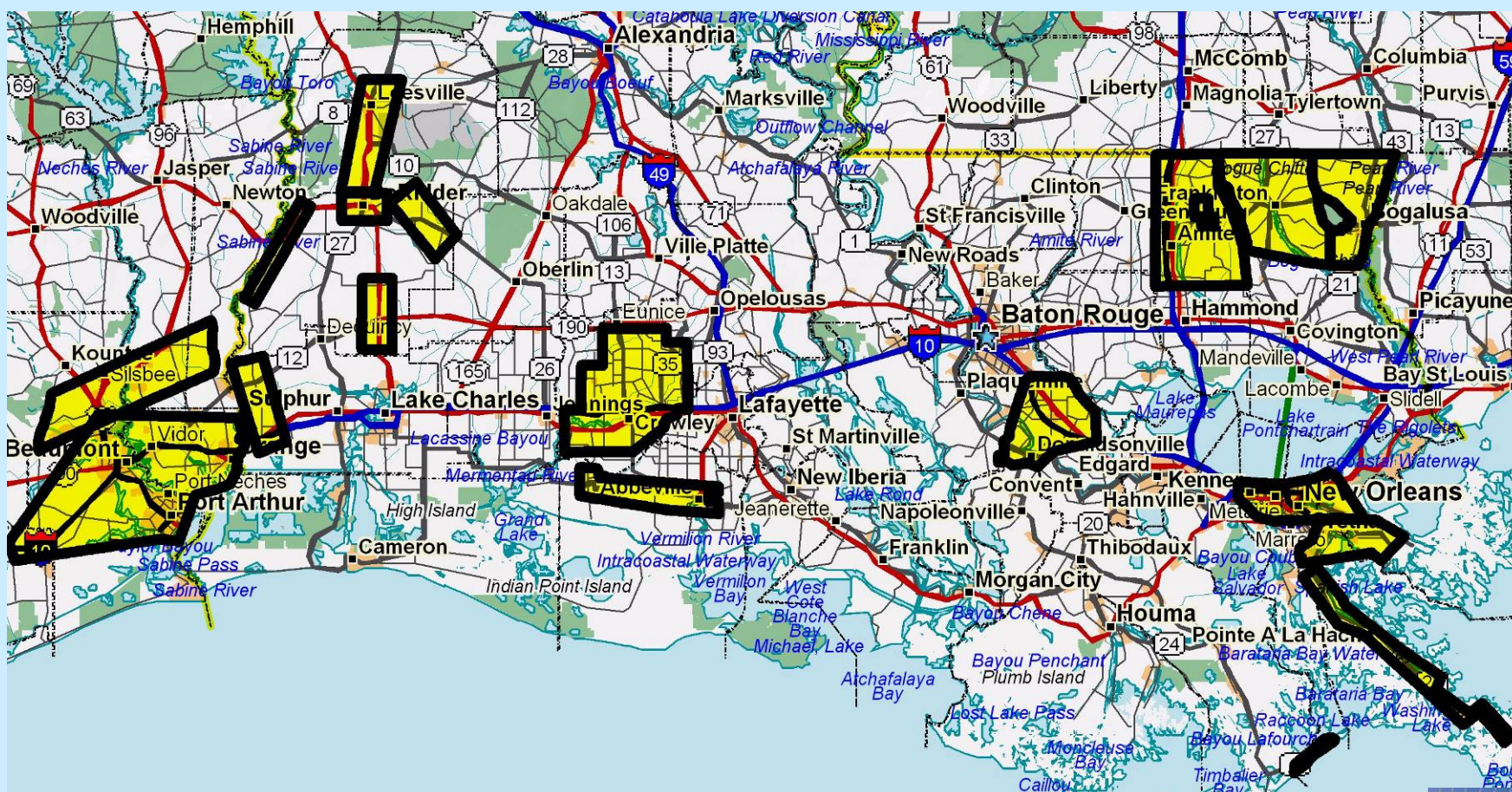
# Air Force flew missions in 12 Parishes

Naled=Dibrom

.5 oz/acre in east

.75 oz/acre in west

1 oz/ acre in Orleans



Map provided by M. Breidenbaugh, USAF

# Spray Facts

- Acres sprayed
  - AF ~1.9 million
  - Private contractors ~4.6 million
  - Organized districts ??? (ongoing)
- Reductions in mosquito counts after treatment averaged greater than 92% (range 71-100%, median 97%)
  - Landing rates typically dropped from >200/min to <1/min

# Insect Control In New Orleans



# Insect Control In New Orleans



Highest rate of Naled  
(1oz/acre) used in any of the  
missions.

Target Insect strictly filth flies  
(Muscidae, Calliphoridae,  
Sarcophagidae)





FEMA will remain in Louisiana until the last resident returns home. – Bob McGill, Sept. 5, 2005