

VECTOR-BORNE DISEASES NEW HAMPSHIRE 2005-2007

Jason Stull, VMD, MPVM

Public Health Veterinarian

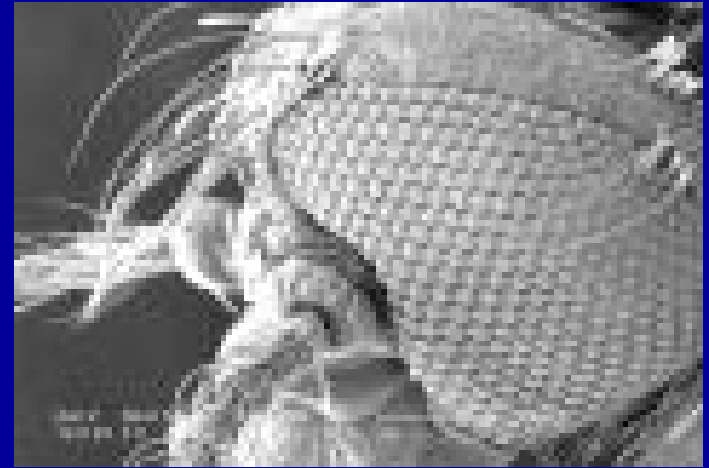
NH Dept of Health and Human Services



NH Department of Health and Human Services
Division of Public Health Services



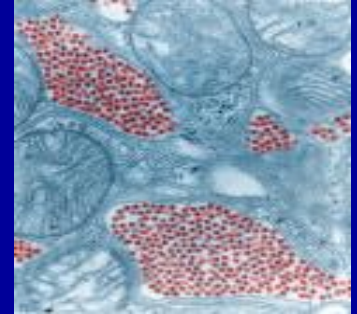
Mosquito-Borne



Diseases



Eastern Equine Encephalitis



2005 – 7 confirmed cases (2 deaths)

Rockingham County – 3

Hillsborough County – 3

Merrimack County – 1

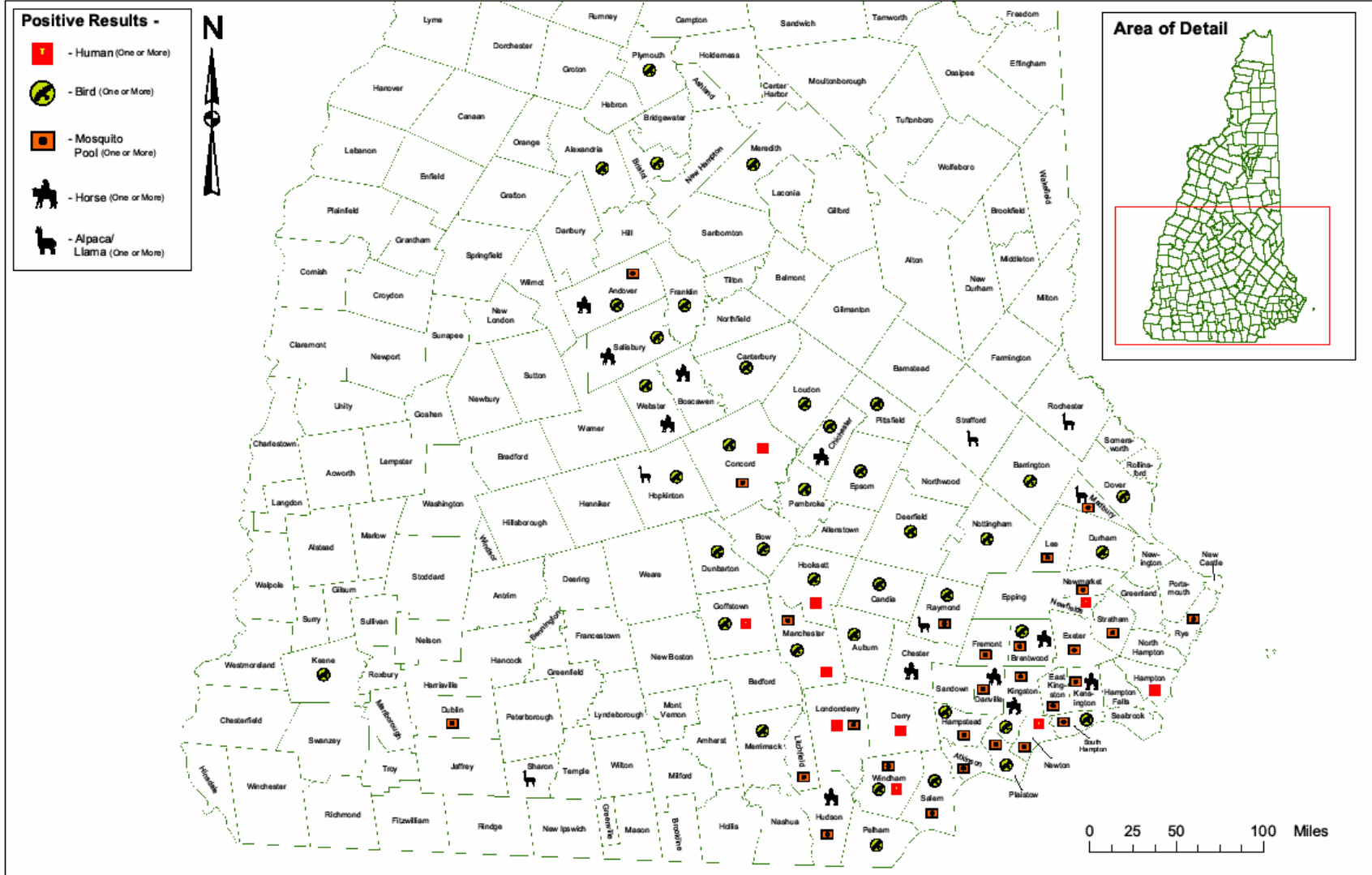
2007+ – 3 confirmed cases

Rockingham County – 3

+2007 data are provisional



Eastern Equine Encephalitis – Positive Test Results, 2003-2007





Dengue Fever

2007+: 1* probable case

St. Louis Encephalitis

2006: 1* confirmed case

Malaria

2006: 10* confirmed cases

*Acquired out of Country

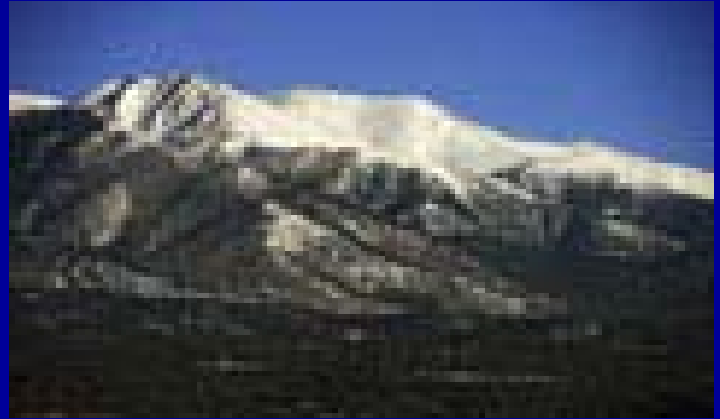
+2007 data are provisional



Tick-Borne



Diseases



Rocky Mountain Spotted Fever

**2005, 2006, 2007+: 1 probable case
each year**

+2007 data are provisional



NH Department of Health and Human Services
Division of Public Health Services

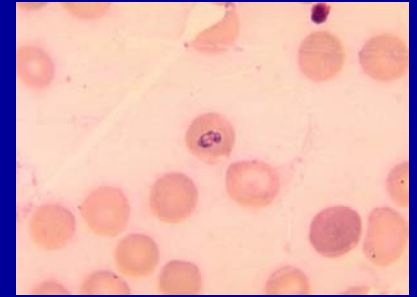


Babesiosis

2005: 2 (1*) confirmed cases

2006: 2 confirmed, 1* probable

2007+: 3 confirmed cases



Ehrlichiosis/Anaplasmosis

2005: 1 confirmed, 2 probable cases

2006: 2 probable cases

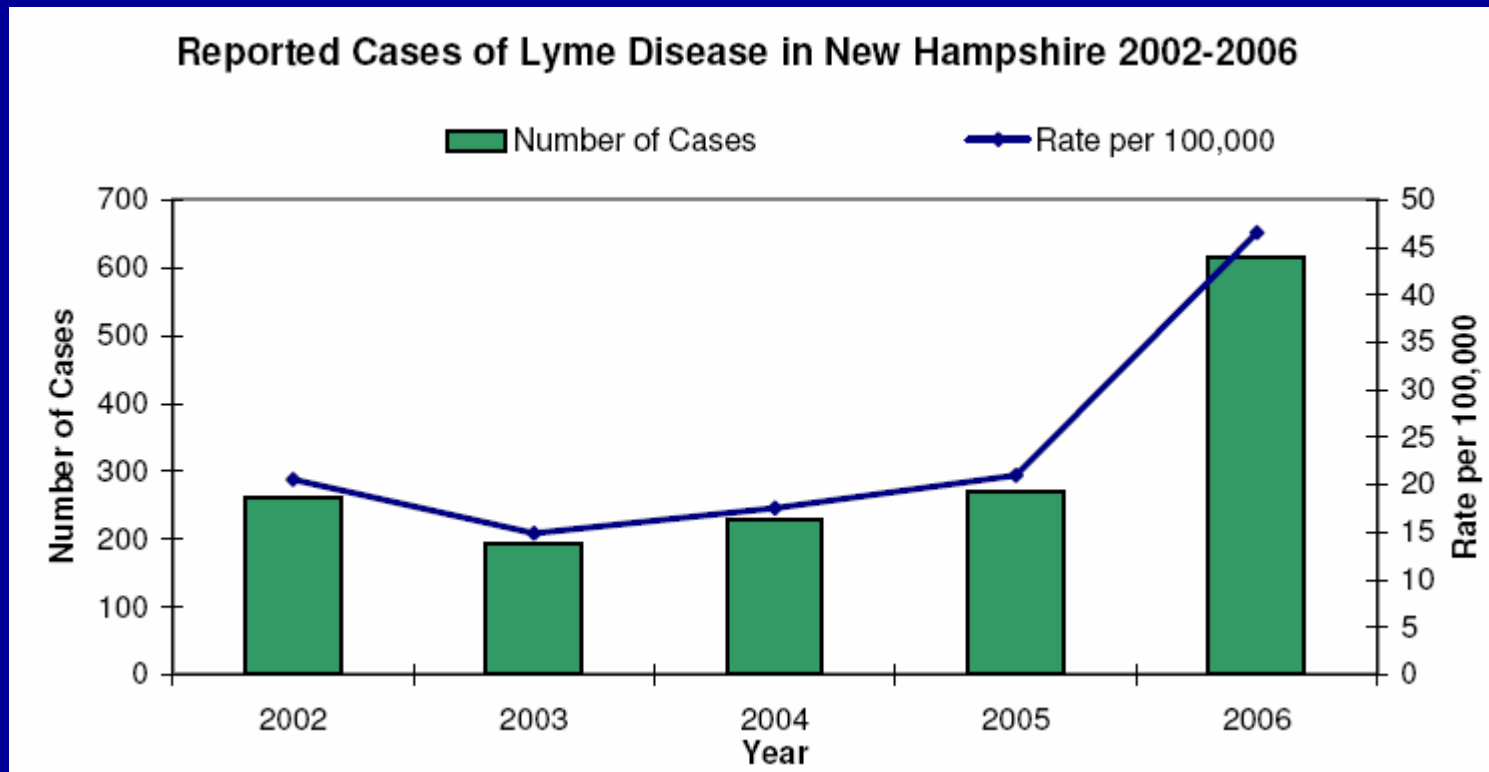
2007+: 3 confirmed, 1 probable case

*Acquired out of State

+2007 data are provisional



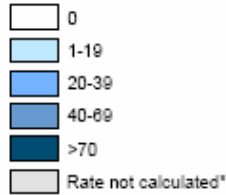
Lyme Disease



New Hampshire Department of Health and Human Services
 Division of Public Health Services
 Communicable Disease Surveillance Section

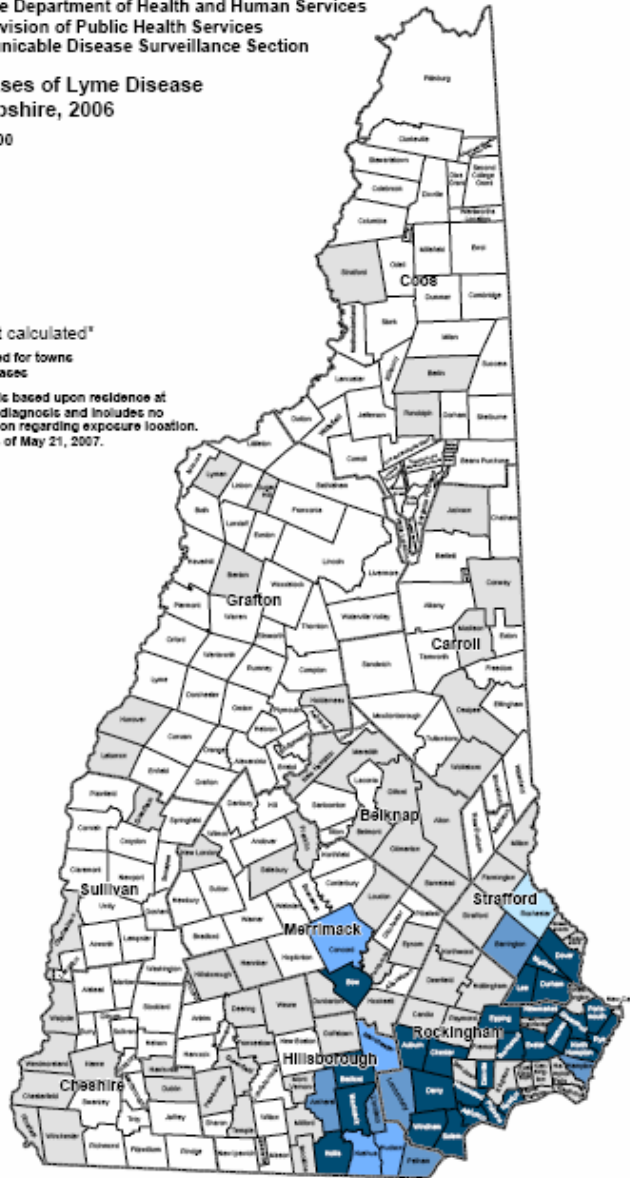
Reported Cases of Lyme Disease
 in New Hampshire, 2006

Rates per 100,000



*Rates not calculated for towns with fewer than 5 cases

Note: County/town is based upon residence at the time of disease diagnosis and includes no additional information regarding exposure location. Data is complete as of May 21, 2007.



Tick Surveillance

- Flagging occurred fall 2007 for adult *Ixodes scapularis*. Plans to continue spring/summer and fall of 2008 with periodic checks thereafter.
- Testing for *Anaplasma*, *Babesia*, and *Borrelia*.
- Low tick abundance in western, mid-central and northern regions of State.
- High tick abundance and *Borrelia* detection in south-eastern and south-central portion of State. *Babesia* and *Anaplasma* also detected in this area.

