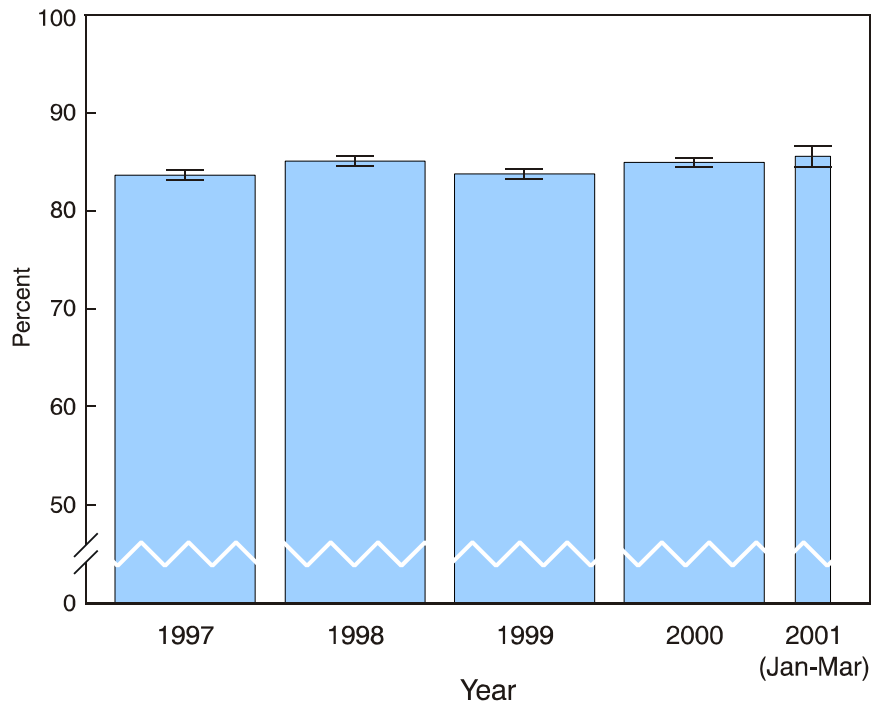


Figure 2.1. Percentage of adults aged 18 years and older with a usual place to go for medical care: United States, 1997- 2001



DATA SOURCE: Sample Adult Core component of the 1997-2001 National Health Interview Surveys. The estimate for the year 2001 was based on data collected from January-March.

NOTES: The usual place to go for medical care does not include hospital emergency room. The analysis excluded people with unknown usual place to go for medical care. Brackets indicate 95% confidence intervals (CI).

- ! In early 2001, 85.6% (95% CI = 84.5% - 86.7%) of adults had a usual place to go for medical care.
- ! The annual percentages of U.S. adults who had a usual source to go for medical care were similar from 1997 to 2000: 83.7% in 1997, 85.1% in 1998, 83.8% in 1999, and 85.0% in 2000, although there was some evidence on increasing trend since 1999.

Table 2.1. Percentage of adults aged 18 years and older with a usual place to go for medical care, by sex, age, and race/ethnicity: United States, 2000

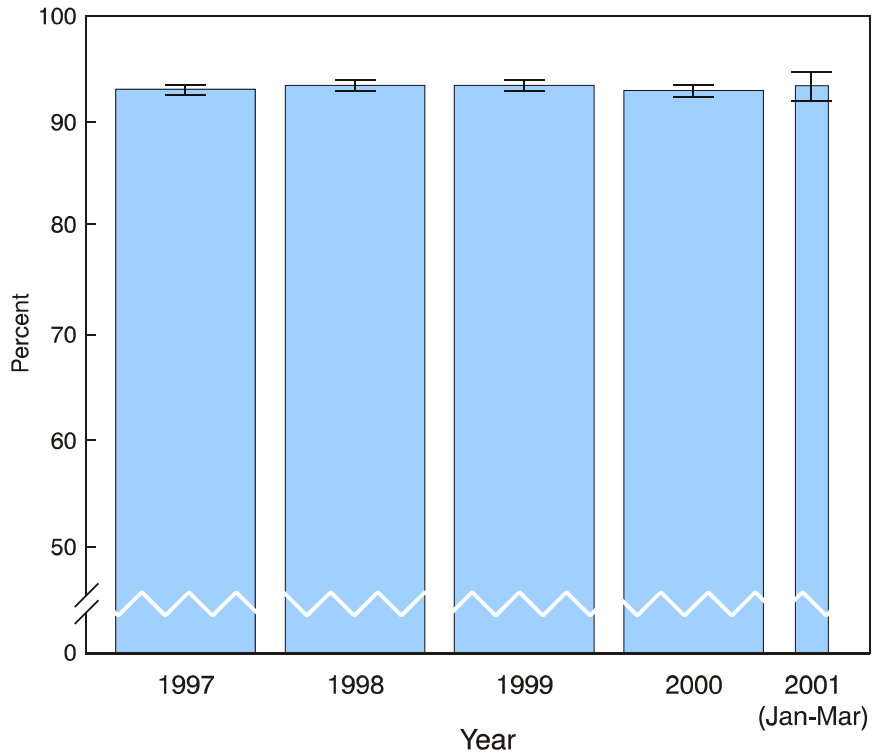
Characteristic	Unweighted Sample size	Weighted Percentage	95% CI
Total	32,146	85.0	84.5-85.5
Sex			
Men	13,890	79.8	79.0-80.6
Women	18,256	89.7	89.2-90.2
Age, year			
18-24	3,462	74.5	72.7-76.3
25-44	13,065	80.8	79.9-81.6
45-64	9,463	89.5	88.7-90.2
65+	6,156	95.6	95.0-96.2
Race/Ethnicity			
Hispanic	5,336	69.4	67.2-71.6
Non-Hispanic white	21,188	87.7	87.0-88.3
Non-Hispanic black	4,515	83.0	81.6-84.4

DATA SOURCE: Sample Adult Core component of the 2000 National Health Interview Survey.

NOTES: The usual place to go for medical care does not include hospital emergency room. The analysis excluded 229 people with unknown usual place to go for medical care. CI = confidence interval.

- ! Men were less likely than women to have a usual source of medical care.
- ! People aged 18-24 years were less likely than those in other age groups to have a usual place to go for medical care.
- ! Hispanics and non-Hispanic black persons were less likely than non-Hispanic white persons to have a usual place to go for medical care. Adjusting for age and sex did not change this result.

Figure 2.2. Percentage of children under 18 years old with a usual place to go for medical care: United States, 1997- 2001



DATA SOURCE: Sample Child Core component of the 1997-2001 National Health Interview Surveys. The estimate for the year 2001 was based on data collected January-March.

NOTES: The usual place to go for medical care does not include hospital emergency room. The analysis excluded children with unknown usual place to go for medical care. Brackets indicate 95% confidence intervals (CI).

! In early 2001, 93.4% (95% CI = 92.1% - 94.7%) of children under 18 years old had a usual place to go for medical care.

! The annual percentages of U.S. children who had a usual place to go for medical care were similar from 1997 to 2000: 93.1% in 1997, 93.5% in 1998, 93.5% in 1999, and 93.0% in 2000.

Table 2.2. Percentage of children under 18 years old with a usual place to go for medical care, by sex, age, and race/ethnicity: United States, 2000

Characteristic	Unweighted Sample size	Weighted Percentage	95% CI
Total	13,350	93.0	92.4-93.6
Sex			
Boys	6,870	93.4	92.7-94.1
Girls	6,480	92.6	91.7-93.5
Age, year			
<6	4,624	95.4	94.7-96.1
6-10	3,505	93.6	92.6-94.6
11-13	2,083	92.8	91.6-94.0
14-17	3,138	89.0	87.6-90.4
Race/Ethnicity			
Hispanic	3,617	86.2	84.7-87.7
Non-Hispanic white	6,979	95.2	94.6-95.8
Non-Hispanic black	2,165	91.8	90.1-93.5

DATA SOURCE: Sample Child Core component of the 2000 National Health Interview Survey.

NOTES: The usual place to go for medical care does not include hospital emergency room. The analysis excluded 27 children with unknown usual place to go for medical care. CI = confidence interval.

- ! Over the four age groups, children aged 14-17 years were less likely to have a usual place to go for medical care.
- ! Hispanic children were less likely than non-Hispanic white and non-Hispanic black children to have a usual place to go for medical care. Adjusting for age and sex did not change this result.

Data tables for figure 2.1 - 2.2:

Figure 2.1. Percentage of adults aged 18 years and older with a usual place to go for medical care: United States, 1997-2001

Year	Percent	95% Confidence interval
1997	83.7	83.2-84.2
1998	85.1	84.6-85.6
1999	83.8	83.3-84.3
2000	85.0	84.5-85.5
2001 (Jan-Mar)	85.6	84.5-86.7

Figure 2.2. Percentage of children under 18 years old with a usual place to go for medical care: United States, 1997-2001

Year	Percent	95% Confidence interval
1997	93.1	92.6-93.6
1998	93.5	93.0-94.0
1999	93.5	93.0-94.0
2000	93.0	92.4-93.6
2001 (Jan-Mar)	93.4	92.1-94.7