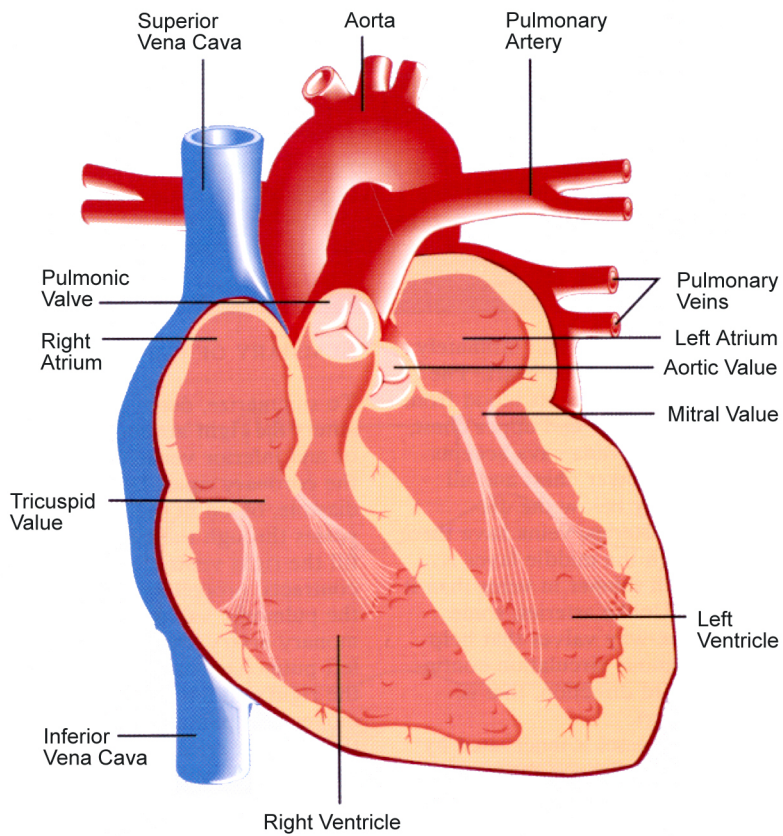


Diagram of the heart



The heart contains four chambers and four valves. The superior vena cava, inferior vena cava, and pulmonary vein are the large veins that empty into the heart; the aorta and pulmonary artery are large arteries that lead out of the heart. The mitral valve and tricuspid valve allow blood to move from the left and right atria, respectively, to the left and right ventricles. The blood is then pumped out of the ventricles to the body and lungs.

Source: Chung, M.K., and Rich, M.W. Introduction to the cardiovascular system. *Alcohol Health and Research World* 14(4):269–276, 1990.

Prepared: February 2001