

# Legislation & Community Management of Local Marine Resources in West Hawaii

By  
**Paulo Maurin**

Knauss Lecture Series

NOAA Central Library Brownbag lecture  
July 24, 2008

[Paulo.Maurin@noaa.gov](mailto:Paulo.Maurin@noaa.gov)



## Paulo with the Coral Reef program:

- International Year of the Reef: 2008
- CRCP Roadmap
- Outreach & Education efforts
  - Presentations on corals, bleaching and ocean acidification
  - Compiling and producing educational materials
- Involved with the U.S. Coral Reef Task Force
  - Across-federal agencies and jurisdictions
  - Report: summary federal agencies coral reef activities
- Coral Reef Conservation Act reauthorization

# The Picture in 1997...

www.freshmarine.com

Yellow Tang (Hawaii) - *Zebrasoma flavescens* - Yellow Hawaii Tang - Yellow Sailfin Tang



Our Price : \$25.98

Buy Now → Close

This product listing features a photograph of a bright yellow tang fish swimming in an aquarium. The fish is shown in profile, facing left. A watermark for 'Fresh Marine' is visible over the fish. Below the image, the price is listed as \$25.98, and there are 'Buy Now' and 'Close' buttons. The background of the listing includes a decorative border with starfish, shells, and coral.

About a quarter of a million Yellow Tangs collected from West Hawaii coast *annually*

Hawaiian - *Sabella* species



Feathered worms collected in Ohau for about \$1 each

Our Price : \$13.98

Buy Now → Close

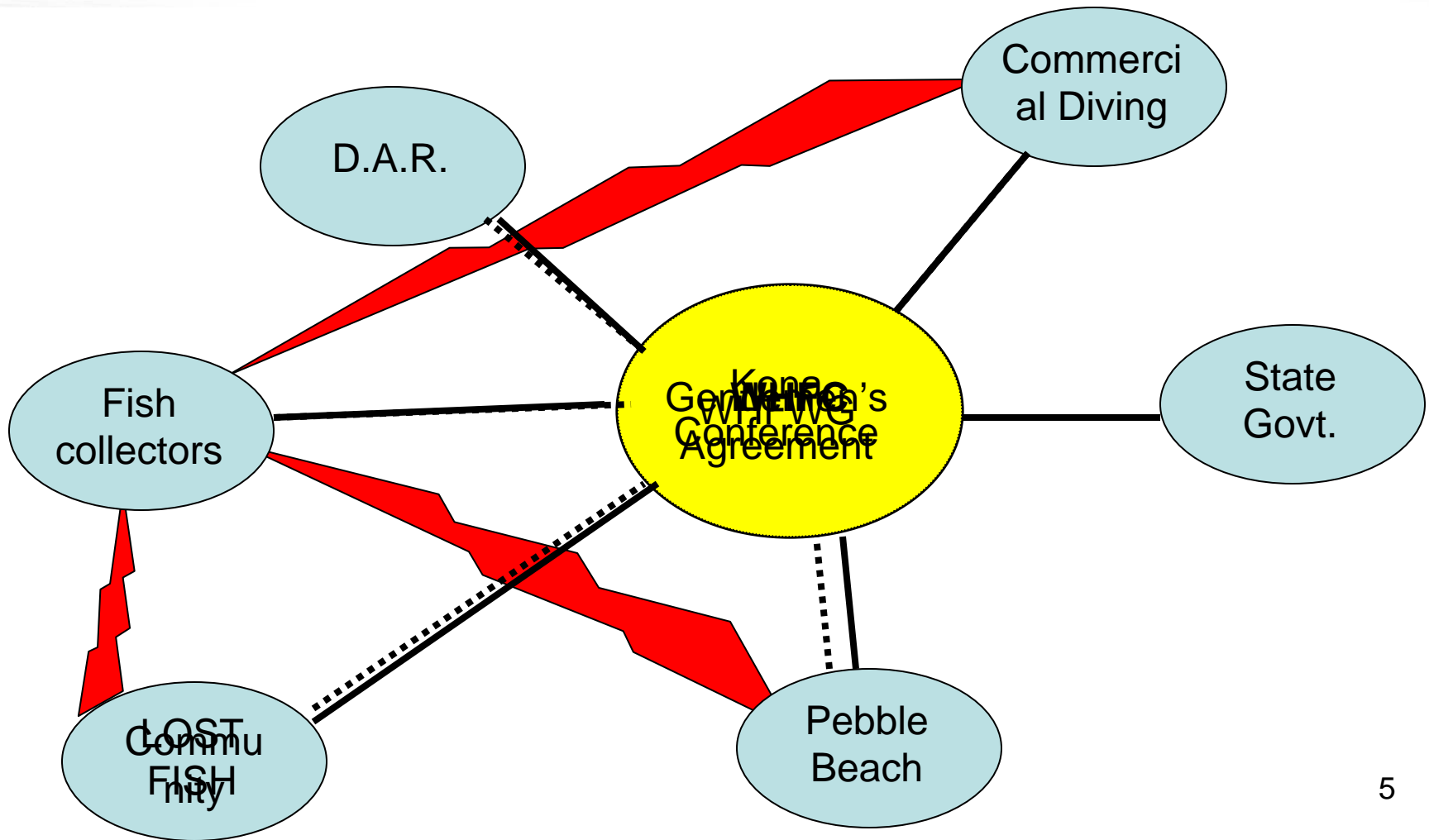
This product listing features a photograph of a feathered worm (Sabella species) on a rock. The worm has a thick, brown, cylindrical body and a fan of long, white, feathery tentacles. A watermark for 'Fresh Marine' is visible over the worm. To the right of the image, text states 'Feathered worms collected in Ohau for about \$1 each'. Below the image, the price is listed as \$13.98, and there are 'Buy Now' and 'Close' buttons. The background of the listing includes a decorative border with starfish, shells, and coral.

# Aquarium Fish Collecting

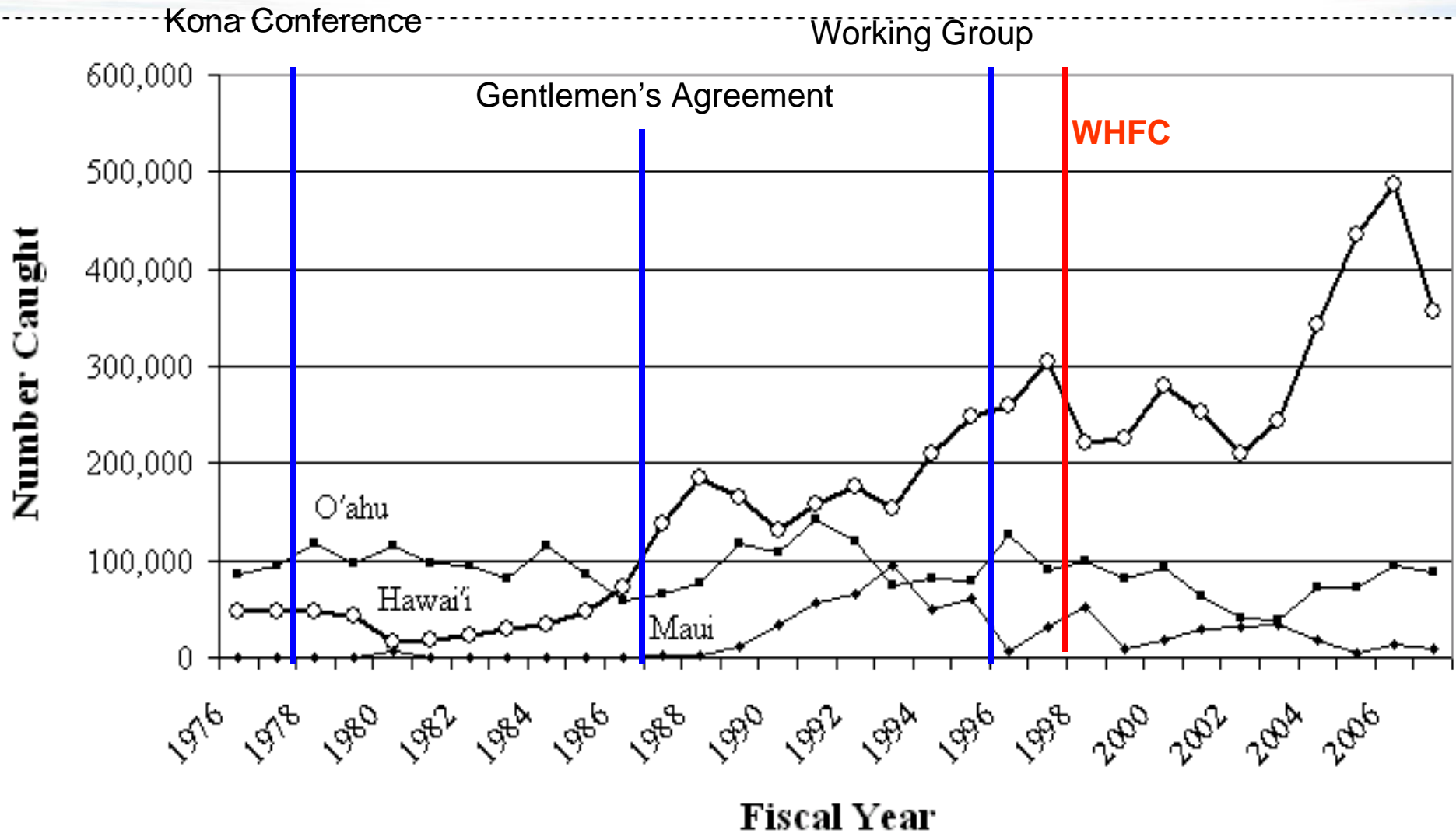
- Targeted many species, but Yellow Tang (*Zebrasoma flavescens*) is collected in the largest numbers
- Industry was initially centered on Oahu, but overharvesting shifted collecting patterns from fish to invertebrates
- West Hawaii became the new hub of collecting activities  
The example of Oahu persisted in the community
- Social, geographic, economics & natural factors affected collecting dynamics:
  - Broad vs. narrow fringing reefs
  - Two hurricanes hit Oahu
  - Increasing demand for aquaria fish
  - Arrival of new fishers with more intensive collecting techniques, from “artisan” to “industrial”



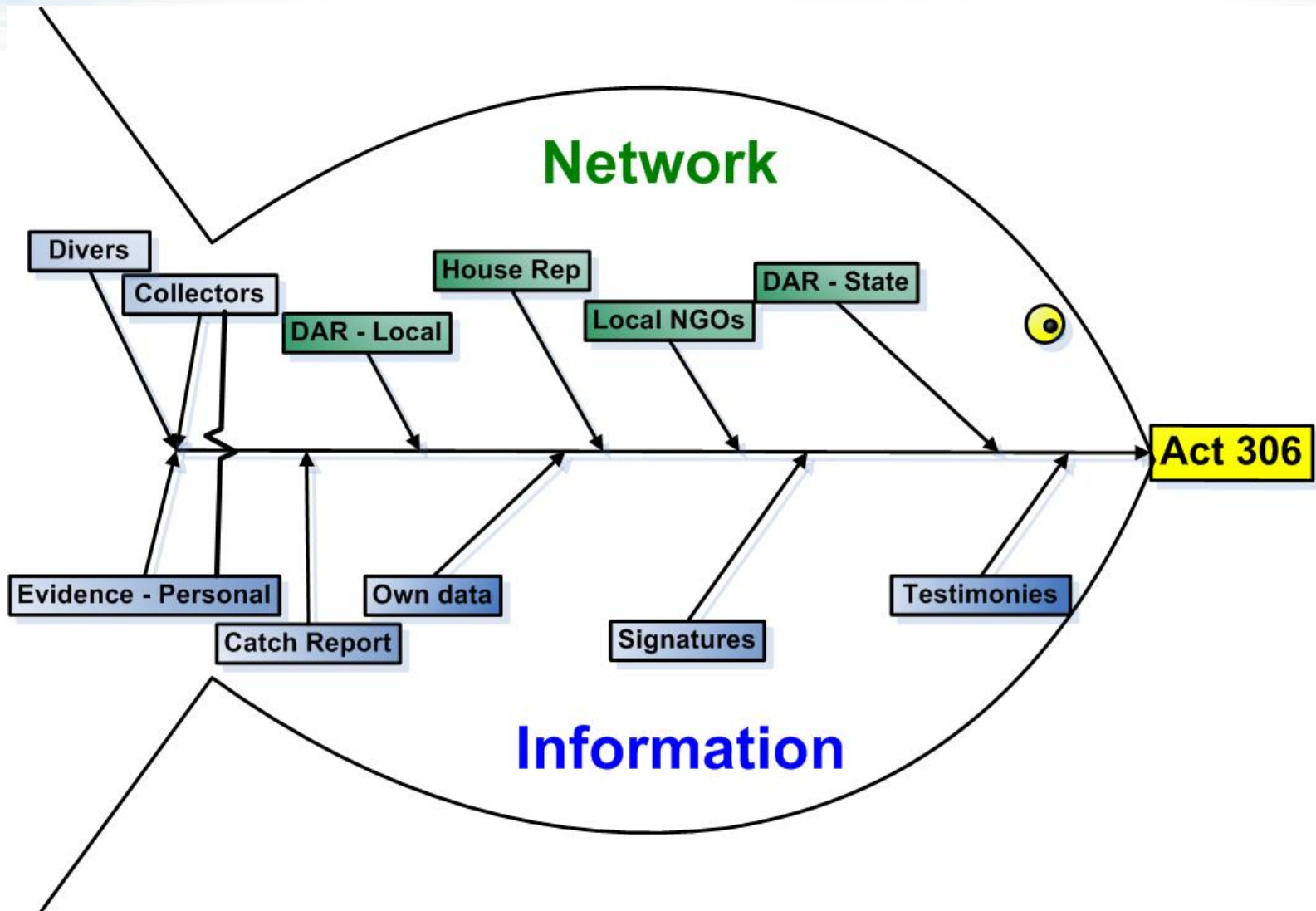
# West Hawaii



# Aquarium Fish Collecting & Management Initiatives



# The “Heteronization” of the Marine Stakeholder



# The West Hawaii Fisheries Council

- Monthly general public meetings
- 25 members (geographical & role criteria)
- Subcommittees: User Conflict, Govt Affairs, Traditional, Youth, Emerging Issues







# THE WEST HAWAI'I FISHERIES COUNCIL (WHFC) WORK

**June '98**

West Hawaii Fisheries Council first convenes



**May '96**

West Hawaii Reef Fish Working Group (WHRFWG) holds first meeting

**July '98**

Act 306 signed



**Dec '01**

WHFC recommends Gill Net rules to DAR (adopted in 2005)



**Nov '04** WHFC recommends banning SCUBA spearfishing at night to DAR

**Aug '05**

Limited sea urchin harvest approved in Old Kona Airport MLCD



1996

1997

1998

1999

2001

2003

2004

2005

2006

2007

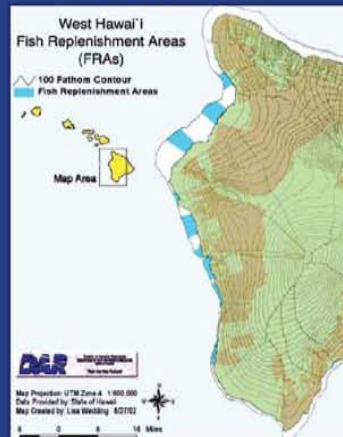


**July '97** LOST FISH Coalition gathers 4,000 signatures, petitioning for restrictions on aquarium fish collection

**Sept '98**

9 FRAs agreed by WHFC, covering 35.2% of West Hawaii coastline

**Dec '99**



FRA rule approved by Legislature (without enforcement provisions)

**Aug '05** FRA amended - Enforcement rules added



**Oct '06**

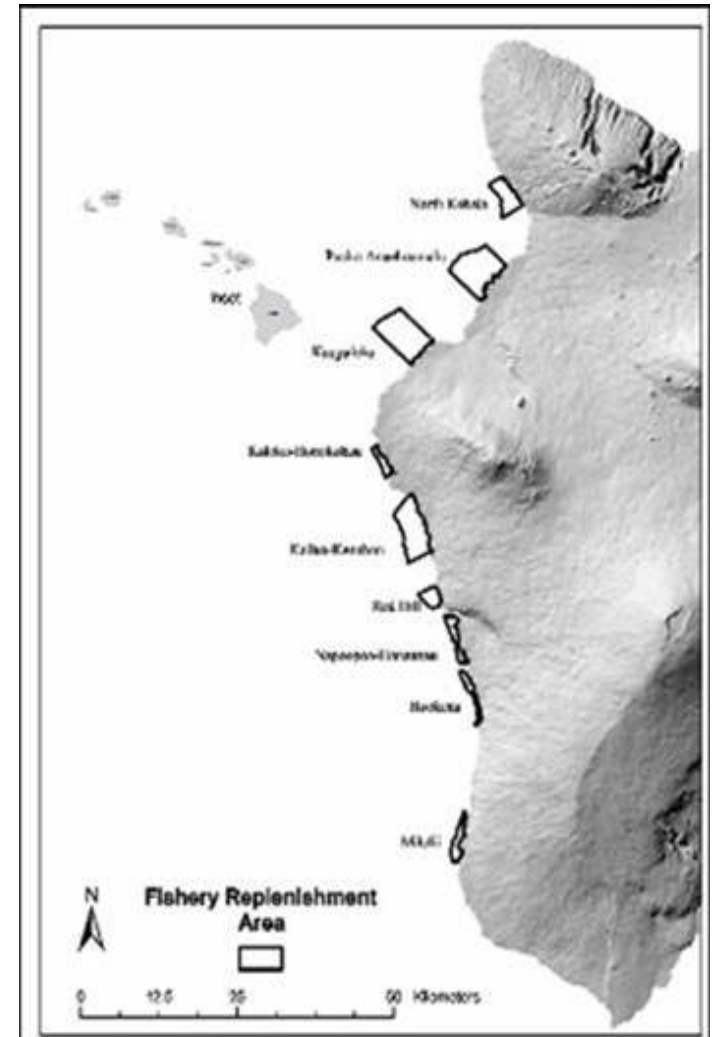
WHFC recommends arranging FRAs to accommodate ocean user conflict

**Jan '07** West Hawaii Youth Fisheries Council gets smoking ban at Kahaluu Beach Park

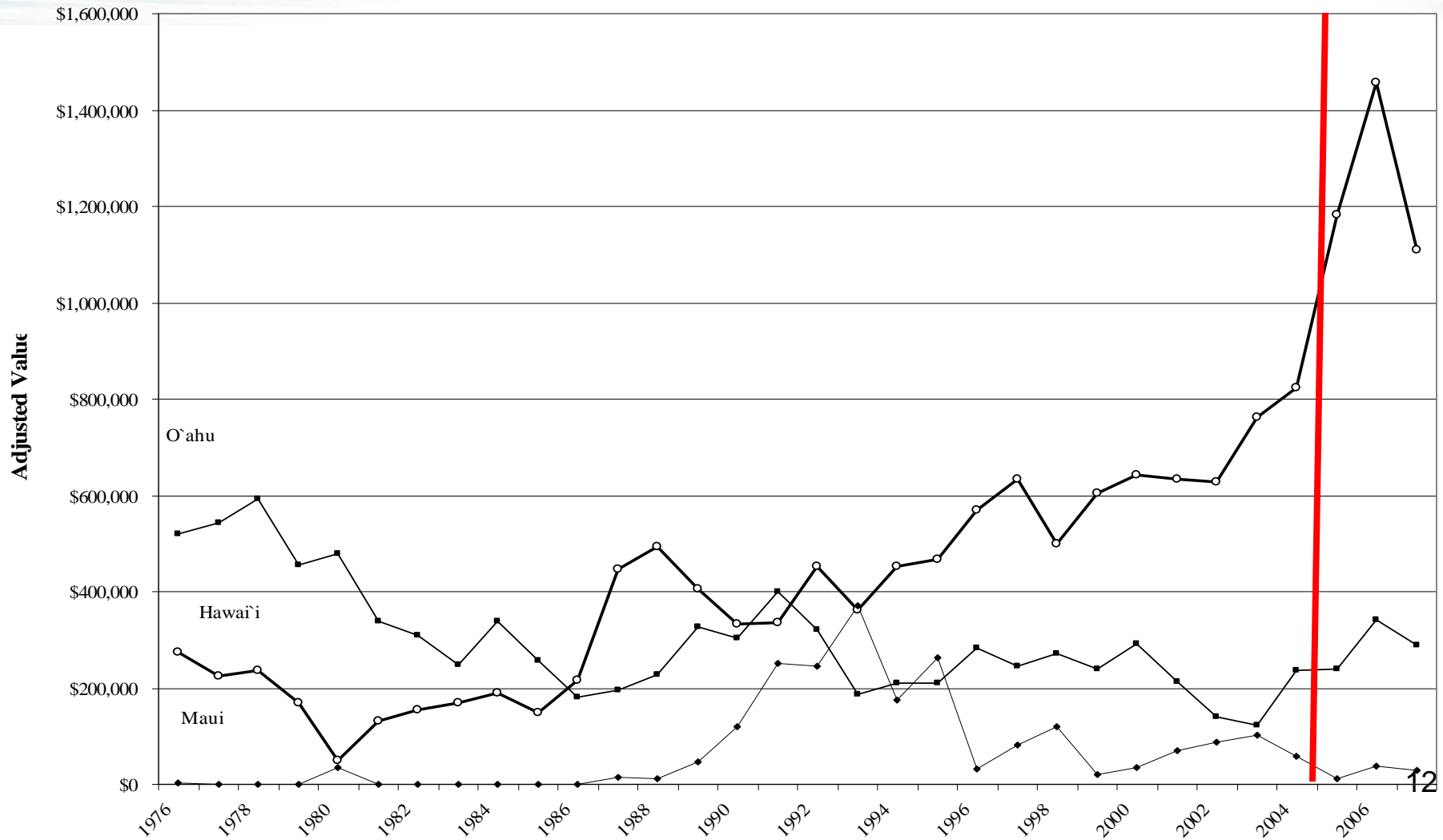
# Act 306: Key Elements

- ✔ Designated the ENTIRE coastline as a WHFMA
- ✔ Established a minimum of 30% of the West Hawaii coastline as FRA
- ✔ Set FRAs banning gill netting
- ✔ Required “substantive community input”
- ⚠ Mandated day-use mooring buoys network
- ❌ Mandated FRAs where as no-take of ANY reef-dwelling fish
- ✔ A 5-year interval review

# From a fish to a map



# Fish collecting reported catch value





# How is West Hawaii Doing?

- Baseline surveys indicate significant increases in Yellow Tang both within and outside FRAs
- CPUE of aquarium fish is higher in West Hawai`i than elsewhere in the state
- Stakeholders are still talking
- Similar co-management arrangements are being established in other areas of the state

# More Than Just Policy

- 
- Initiated by access to environmental data
  - Active & involved community
  - Long running educational efforts: Sea Grant's ReefTalk lectures
  - A marine literate community
  - Changes in perspectives:
    - Whose fish are they?
    - Aquarium fishery accepted as a fishery as any other
  - A full time marine biologist engaged with the local community
  - Sea Grant/Div of Aq Resources partnership

# Questions & Comments?



[Paulo.Maurin@noaa.gov](mailto:Paulo.Maurin@noaa.gov)