

SAMPLE DESCRIPTION

Box 1/12

Cruise Id: L1-76-MX Size (mm): ~10 cobbles Location: Gulf of CA
 Sample Id: D155 V13, V24, V36, Y42, V47, V50, V53 Weight (kg): 33 pieces @ 9.33kg Depth (m): 5 Pescadero Basin

Mn Crust Description

Surface Texture: Angular, Fractured, Weathered, Flattened

Mn Crust Thickness (mm):

Min: None Max: Ave:

Outer to Inner Layers (mm)

	Min	Max	Ave	Texture & Color
1				
2				
3				
4				
5				
6				



Comments and XRD Mineralogy:

Subs: _____

 XRD: V50; V47, V13, V24

Substrate Description

Rock Type: Altered basalt, maybe one tuff
All Green Rocks

Description:

Fine grained dull to bright green, 31-40% dk/green clasts, nearly aligned in Tuff, glass + Re Fract (V13)
Fractured secondary quartz (2) Pale green
silicified tuff (V24, 50); (3) Green silicified rock (V47)
of unknown origin; (4) or (5) dk green clast - breccia (V42);
Biology (?): (5) white tuff w/ gray shades (walled?) w/ dk green

Described by: AS

Subsampled by: _____

Cruise Id: L1-76-MK Size (mm): 3 Cobbles Location: Gulf of CA
 Sample Id: V32, 46, 51 Weight (kg): 3.27 kg Depth (m): 5 Peacocks Basin

Mn Crust Description

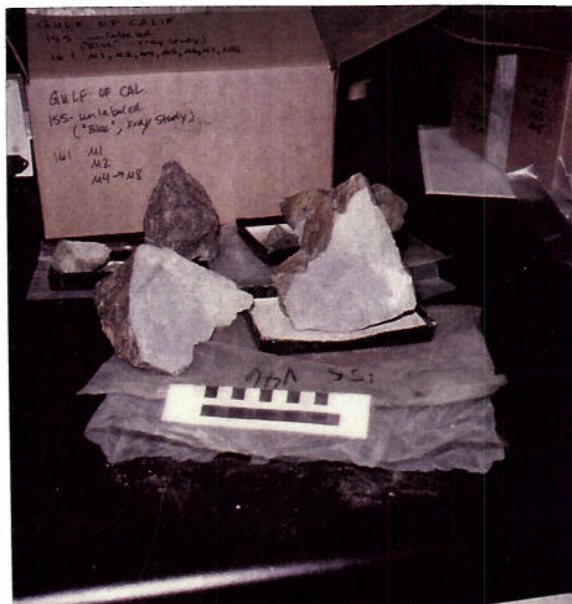
Surface Texture: Angular, weathered

Mn Crust Thickness (mm):

Min: Max: Ave:

Outer to Inner Layers (mm)

	Min	Max	Ave	Texture & Color
1				heavy Fe/Mn staining on surface of some samples
2				
3				
4				
5				
6				



Comments and XRD Mineralogy:

Subs...
 xrd: V32B V46

Substrate Description

Rock Type: Altered/Silicified basalt

Description: fine grained, grey-green porous
fractured altered green crusts. Fe
staining/leaching of some minerals
secondary minerals

Biology (?): _____

Described by: AS

Subsampled by: _____

Gulf of Mexico
S. Peninsular Basin

Cruise Id: L1-76-MX Size (mm): 16 pebbles + cobbles Location: _____
 Sample Id: D155 V4, V11, V12, V7 Weight (kg): 40 sieve A 7.2 kg Depth (m): _____
V15, V23, V47, V33, V21
V29, V16, V44, V43, Mn8
V14, V2

Mn Crust Description

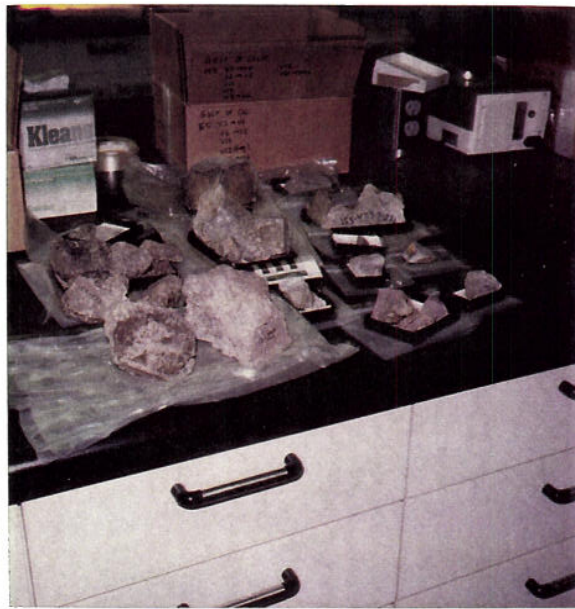
Surface Texture: Angular, rough porous.
Fractured weathered

Mn Crust Thickness (mm):

Min: None Max: _____ Ave: _____

Outer to Inner Layers (mm)

	Min	Max	Ave	Texture & Color
1				
2				
3				
4				
5				
6				



Comments and XRD Mineralogy:

Subs

XRD: V4, V11, V12, V7, V15, V16, V23,
V21, V29, V14, V2, V43, V44

Substrate Description

Rock Type: Altered Red-brown basalts -
Andesites + greenish breccias

Description: (1) Red-brown andesite w/ lg yellow-
brown amygdules + veins; (2) yellow-green, grey, green
clasts up to 30mm long in red-brown matrix = breccias
(3) gray + greenish clasts in greenish matrix = breccias

Biology (?): _____

Described by: _____

AS

Subsampled by: _____

SAMPLE DESCRIPTION

Box 4/12

Gulf of CA
S Pescadero Basin

Cruise Id: LI-76-MX Size (mm): pebble - cobble size Location: _____

Sample Id: V5, V6, V20, V22 Weight (kg): 55 pieces @ 9.75 kg Depth (m): _____
V38

Mn Crust Description

Surface Texture: Rough, weathered Fe staining

Mn Crust Thickness (mm):

Min: None Max: _____ Ave: _____

Outer to Inner Layers (mm)

	Min	Max	Ave	Texture & Color
1				
2				
3				
4				
5				
6				



Comments and XRD Mineralogy:

Subs... Layer Thk... Wt(%)
XRD: V5: Plag, Qtz, Pyrite, Chlorite, Pyrite
V20: Plag, pure Hematite, Qtz, Smectite, Calcite
V22: Qtz, Plag, Pyrite, Chlorite, Illite, Pyrite

Substrate Description

Rock Type: Almond Andesite (A-braccia?)

Description: fine to med grained, grey, greenish-red in color, distinct white and darker mineral patches, white-feldspar (ortho) some cooling/alteration cracks, scattered mineral

deposition quartz, calcite, illite, chlorite, pyrite, calcite

Biology (?): calcite, illite, chlorite, pyrite

Described by: White, green, brown, brownish amygdules in greenish-red-brown gabbro - V20 maybe braccia(?) also V6 maybe ultramafic braccia

Subsampled by:

SAMPLE DESCRIPTION

Box 5/12

Plutonic

Cruise Id: LJ-76-MK Size (mm): 100x68x60 Location: Gulf of CA
 Sample Id: V22 Weight (kg): 2 @ .63 kg Depth (m): S Pescadero Basin

Mn Crust Description

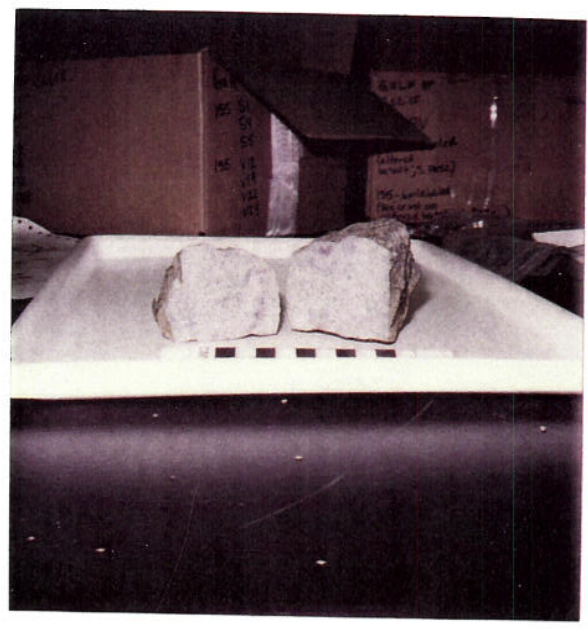
Surface Texture: Rounded Altered green minerals Fe staining. Alteration ind. well weathered.

Mn Crust Thickness (mm):

Min: _____ Max: _____ Ave: _____

Outer to Inner Layers (mm)

	Min	Max	Ave	Texture & Color
1				
2				
3				
4				
5				
6				



Comments and XRD Mineralogy:

_____ Su _____

Substrate Description

Rock Type: Plutonic Altered granite

Description: green, white altered feldspars up to 4mm. Red altered quartz, silicified. Dark green altered pyroxene or amphibole?

Biology (?):

Described by: A. Schopf

Subsampled by:

SAMPLE DESCRIPTION

Box 5/12

Gulf of CA
S. Pescadero BASIN

Cruise Id: LI-76-MX Size (mm): pebbles to cobble size Location: _____
 Sample Id: 53 54 56 B2 V26 Weight (kg): 26 pieces @ 2.44 kg Depth (m): _____
 5155
 425

Mn Crust Description

Surface Texture: Rounded to sub-ang. / Mn staining partial botryoidal

Mn Crust Thickness (mm):

Min: _____ Max: 2 Ave: 1

Outer to Inner Layers (mm)

	Min	Max	Ave	Texture & Color
1		<u>2</u>		<u>Dark brown, non laminated massive, semi botryoidal</u>
2				<u>Probably just staining</u>
3				
4				
5				
6				



Comments and XRD Mineralogy:

Sub

XRD: B2 - smectite, Plag, Hematite, Qtz
 S3 - Plag, Pyrr, Smect, Hem, Qtz
 S4 - Plag, Pyrr, Calcite, Smect, Qtz

Substrate Description

Rock Type: Sandstones, Conglomerate

Description: Med grained angular mineral fragments. Feldspar, quartz, hornblende. Fe minerals. Altered angular fragments weathering into - S6 = breccia w/ greenish clasts in red-green limonite matrix

Biology (?): _____

Described by: AS

Subsampled by: _____

Braccia

Cruise Id: LI-76-MX Size (mm): pebble size Location: Gulf of CA
 Sample Id: Ma 1 Weight (kg): 7 pieces @ .28 kg Depth (m): S Mendocino Basin

Mn Crust Description

Surface Texture: Angular Fe/Mn staining
on surface no crust

Mn Crust Thickness (mm):

Min: _____ Max: _____ Ave: _____

Outer to Inner Layers (mm)

	Min	Max	Ave	Texture & Color
1	None			
2				
3				
4				
5				
6				



Comments and XRD Mineralogy:

Sul

Substrate Description

Rock Type: Braccia

Description: Med grained groundmass

with up to 20mm angular and rounded, pale brown to gray

basalt and/or andesite clasts. Altered basalt clasts.

No glass

Biology (?):

Described by:

AS

Subsampled by:

SAMPLE DESCRIPTION

Box 5/12

Gulf of CA
S. Pescadero Basin

Cruise Id: 41-76-MX Size (mm): pebble size Location: _____
 Sample Id: D155 V10 V31 Weight (kg): 2 pieces @ .39 kg Depth (m): _____

Mn Crust Description

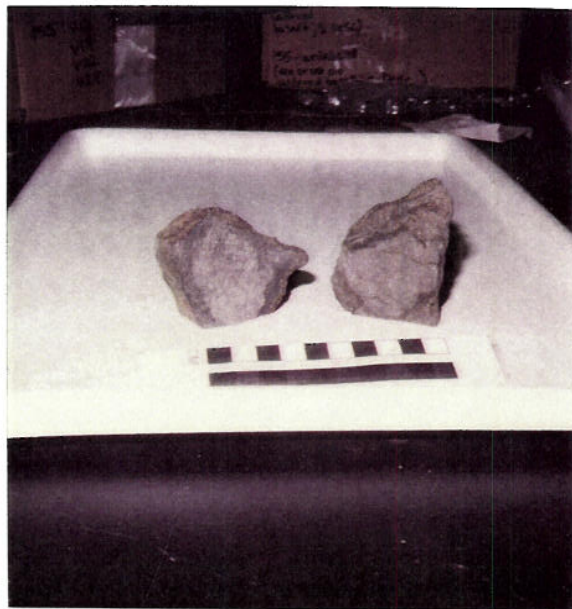
Surface Texture: Angular Fe stained
weathering rind

Mn Crust Thickness (mm):

Min: _____ Max: _____ Ave: _____

Outer to Inner Layers (mm)

	Min	Max	Ave	Texture & Color
1				<u>Fe/Mn staining, less than 1mm thick</u>
2				
3				
4				
5				
6				



Comments and XRD Mineralogy:

Sub: _____

Substrate Description

Rock Type: massive (G) basalt (V10);
Lia base (V31)

Description: fine to med. grained, green
feldspar, hornblende? crystals,
cooling and weathering rind, porous
V31 - lg. Plag laths

Biology (?): _____

Described by: A. Schuster

Subsampled by: _____

0/12

Cruise Id: D155-76-MX

Size (mm): 106x72x72

Location: Gulf of CA

Sample Id: Mn6

Weight (kg): 1.0

Depth (m): 2000

Mn Crust Description

Surface Texture: Smooth

Mn Crust Thickness (mm):

Min: 8 Max: 20 Ave: 20

Outer to Inner Layers (mm)

	Min	Max	Ave	Texture & Color
1	12	14	13	Dark brown, yellow specks, med grained
2				med grained
3	6	8	7	wavy lamination, yellow brown
4				
5				
6				



D155-Mn6

Comments and XRD Mineralogy:

Sub _____ Layer Thick _____ Wt(g) _____

Substrate Description

Rock Type: Basalt

Description: Gray, fine grained fractured

17mm thick wavy vug filled politic

Zone. Glassy nod. Fe staining

Biology (?): _____

Described by: A. Schuetz

Subsampled by: _____



Gulf of CA
D155-Mn10 8 samples



Gulf of CA
D155-Mn10-1



Gulf of CA
D155-Mn10-1

SAMPLE DESCRIPTION

18 samples, cobbles to cobble size
Mn11-1 130x97x36

Box 6/12

Cruise Id: L1-76-MX

Size (mm):

Mn11-2 65x54x39

Location:

Gulf of CA

S. Pescadero Basin

Sample Id: Mn11

Weight (kg):

18 samples 1.905 kg

Depth (m):

Mn11-1 320g

Mn11-2 165g

Mn Crust Description

Surface Texture: Smooth, Modified botryoidal

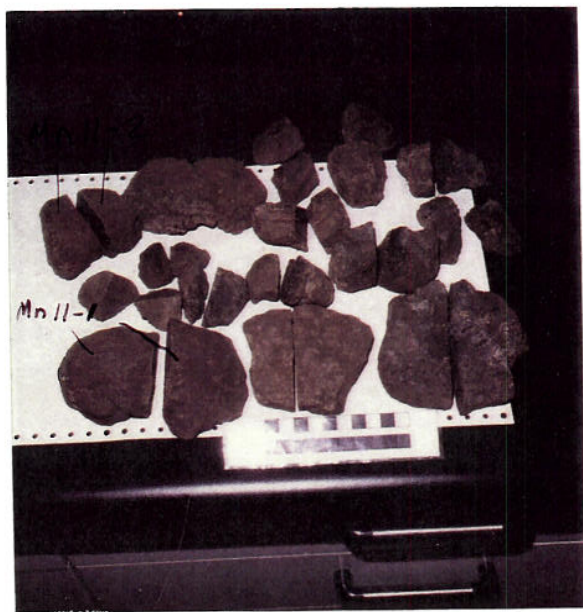
columnar

Mn Crust Thickness (mm):

Min: _____ Max: _____ Ave: _____

Outer to Inner Layers (mm)

	Min	Max	Ave	Texture & Color
1	19	42	28	mixed laminated + non laminated dark brown bits of fragments, massive, denser clay minerals
2				
3	8	25	16	dark brown, columnar, hydrothermal, friable, Fe stained
4				
5				
6				



Gulf of CA

D 155-Mn11

Comments and XRD Mineralogy:

Su _____ Layer Thick. (mm) (g)

Mn11-1A CC-hydrothermal layer 0-15mm 30g

Mn11-1B CC-mixed layer XRD 15-33mm 30g

Mn11-2A CC-layer 1, XRD 0-12mm 30g

Mn11-2B CC-layer 2, XRD 12-32mm 30g

Mn11-2C CC-layer 3, XRD 32-38mm 30g

Substrate Description

Rock Type: None, lots of volcanic and altered volcanic fragments

PTS-2A-C bulk

PTS-1A-B bulk

Description: _____

Biology (?): _____

Described by: A Schuetz

Subsampled by: A Schuetz



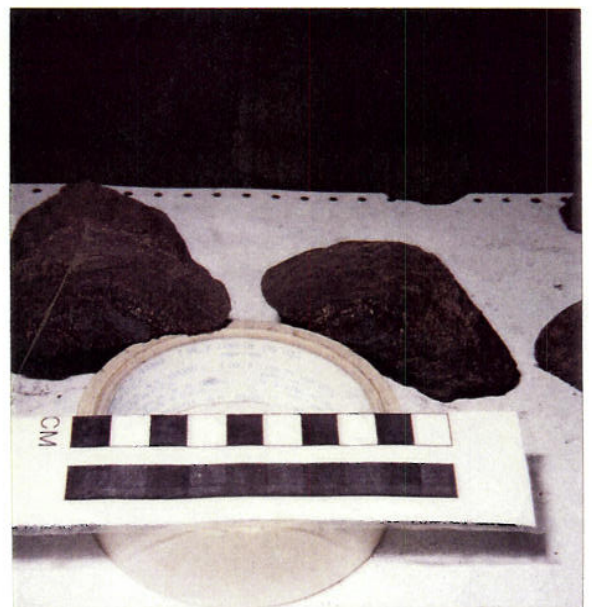
Gulf of CA
D155-Mn11



Gulf of CA D155
Mn 11-1



Gulf of CA
D155-Mn11-2



Gulf of CA
D155-Mn11-1

SAMPLE DESCRIPTION

Box
6/12

Cruise Id: D155 41-76-MX

Size (mm): Mn12-1 135x85x60

Location: Gulf of CA S Pescadero Basin

Sample Id: Mn12

Weight (kg): 6 samples 174 kg
Mn12-1
605g

Depth (m): _____

Mn Crust Description

Surface Texture: Smooth

Mn Crust Thickness (mm):

Min: 20 Max: 32 Ave: 25

Outer to Inner Layers (mm)

	Min	Max	Ave	Texture & Color
1	21	25		very waxy, laminating dark brown and yellow. brown laminations.
2				small angular clasts of altered volcanic S
3	22	26		dark brown, waxy + laminations, volcanic clasts
4	1	2	1	Fe rust color, fine grained, granular, angular fragments
5				
6				



Gulf of CA
D155-Mn12
6 samples

Comments and XRD Mineralogy:

Subs

Mn12-1A cc-bulk XRD 0-28mm 30g

Mn12-1B cc-substrate XRD 28-57mm 30g
PTS

Substrate Description

Rock Type: Basalt

Description: Fine grained, green-white color, fractured, minerals altered to clays or zeolites, highly weathered

Biology (?): _____

Described by: A. Selverstone

Subsampled by: A. Selverstone



Gulf of CA,
D155-Mn12-1

SAMPLE DESCRIPTION

Box 6/12

Cruise Id: L1-76-MX Size (mm): Mn13-1 95x73x30 Location: Gulf of CA S Pescadero Basin
 Sample Id: Mn13 Weight (kg): 3 samples 3.66 kg Depth (m): _____
 D155
 Mn13-1
 305g

Mn Crust Description

Surface Texture: smooth, rounded

Mn Crust Thickness (mm):

Min: 2 Max: 32 Ave: 10

Outer to Inner Layers (mm)

	Min	Max	Ave	Texture & Color
1	2	31	10	dark brown, laminated, and partly amorphous, vesicular, porous fragments.
2				
3				
4				
5				
6				



Gulf of CA
 D155 - Mn13
 113 samples

Comments and XRD Mineralogy:

Su _____
 Mn13-1 CC-Bulk, XRD 0-17mm 30g

Substrate Description

Rock Type: Basalt

Description: Fine grained basalt, altered basalt. Dense oolitic, porous clay alteration. Coarse grained amphibole diagenetic. Basaltic volcanic fragments.

Biology (?): _____

Described by: A. Sauerbrey

Subsampled by: A. Sauerbrey



Gulf of CA
D155-Mn13-1

SAMPLE DESCRIPTION

Box 7/12

Cruise Id: 41-76-MX Size (mm): 2 pieces, pebble size Location: SW of CA
 D155 Sample Id: Mn5 Weight (kg): 1.49 Depth (m): 5 Pasadero

Mn Crust Description

Surface Texture: granular to oolitic
some botryoidal

Mn Crust Thickness (mm):

Min: 1 Max: 9 Ave: 1

Outer to Inner Layers (mm)

	Min	Max	Ave	Texture & Color
1	1	9	1	Dark brown, oolitic, unlaminate, mostly
2				very thin and not
3				conspicuous, weathered
4				and some coarse
5				grains are nearly
6				oolitic.



D155-Mn5

Comments and XRD Mineralogy:

Substrate: _____ Layer Thick: _____ Wt(%)

Substrate Description

Rock Type: Basalt

Description: Gray fine grained

very fine grained with Fe staining
Chromite in situ

Biology (?): _____

Described by: A. Schuetz

Subsampled by: _____

SAMPLE DESCRIPTION

Basalts

Gulf of CA
S Pescadero Basin

Cruise Id: L1-7b-MX

Size (mm): pebble-cobble size

Location: _____

Sample Id: V18, V34, V37, V45, V39

Weight (kg): 30+ samples @ 10+ ea

Depth (m): _____

Mn Crust Description

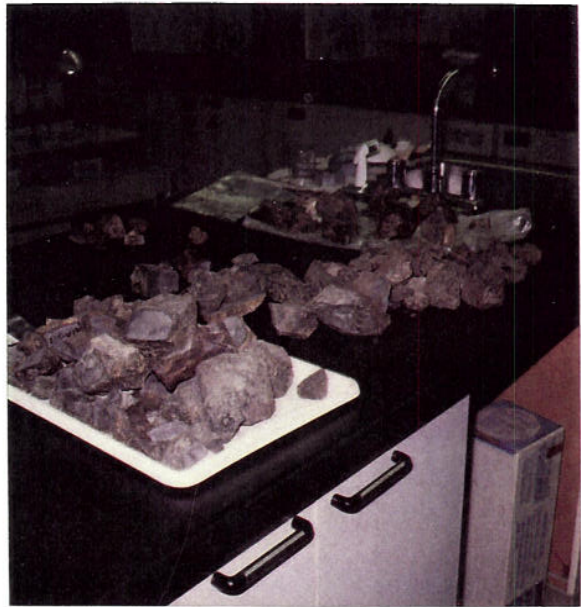
Surface Texture: Rough angular Fe staining
thin Fe/Mn stain on crust, weathered

Mn Crust Thickness (mm):

Min: 1 Max: 2 Ave: 2

Outer to Inner Layers (mm)

	Min	Max	Ave	Texture & Color
1	<u>1</u>	<u>2</u>	<u>2</u>	<u>Thin coating of dark brown yellow staining</u>
2				
3				
4				
5				
6				



Comments and XRD Mineralogy:

St _____

XRD: Mn5, Plag, Pyrox, Smectite, etc

V18: Smectite, Plag, Chloride, Hematite, etc

V34: Plag, etc, Pyrox, oxide

Substrate Description

Rock Type: Basalt - 2 Types

(1) massive (2) Amygdaloidal

Description: Fine grained, gray cooling
ring but no glass. Mostly altered
basalt porous, some secondary vein fill
and mineral deposits, crystals

Biology (?): _____

Described by: A Schuetz

Subsampled by: _____

SAMPLE DESCRIPTION

Box 9/12

Cruise Id: 21-76-MX

Size (mm): 25 pieces, pebble - small cobble

Location: Gulf of CA S Peninsular Basin

Sample Id: Mn4

Weight (kg): 3.2

Depth (m): _____

Mn Crust Description

Surface Texture: Rough granular rounded

Mn Crust Thickness (mm):

Min: 1 Max: 3 Ave: _____

Outer to Inner Layers (mm)

	Min	Max	Ave	Texture & Color
1	<u>1</u>	<u>3</u>	<u>1</u>	<u>Dark brown with yellow speckles, very granular rounded</u>
2				
3				
4				
5				
6				



D 155 Mn4

Comments and XRD Mineralogy:

Sub _____

Substrate Description

Rock Type: Basalt

Description: Gray fine grained

ves and filled vugs, glassy and

altered rind. Some friable

breccia material.

Biology (?): _____

Described by: A. Schuetz

Subsampled by: _____

SAMPLE DESCRIPTION

10/12

Cruise Id: L1-76-MX
 Sample Id: Mn2

Size (mm): pebble size
 Weight (kg): .925

Location: Gulf of CA
S Pescadero Basin
 Depth (m): _____

Mn Crust Description

Surface Texture: smooth granular

Mn Crust Thickness (mm):

Min: 3 Max: 5 Ave: _____

Outer to Inner Layers (mm)

	Min	Max	Ave	Texture & Color
1	<u>3</u>	<u>5</u>	<u>4</u>	<u>late brownish tan laminations - 2mm</u>
2				
3				
4				
5				
6				



Comments and XRD Mineralogy:

Subsampled by: _____

Substrate Description

Rock Type: Basalt Breccia

Description: Gray fine grained,

friable and dense breccia groundmass,

angular volcanic fragments up to 11mm

and volcanic glass.

Biology (?): _____

Described by: A Schuetz

Subsampled by: _____

Gulf of CA
S. Pescadero Basin

Cruise Id: 21-76-MX Size (mm): 13 pieces pebble - 5m cobble Location: _____
 Sample Id: Mn 3 Weight (kg): 2.28 Depth (m): _____

Mn Crust Description

Surface Texture: Rounded rough
modified botryoidal granular-pollitic

Mn Crust Thickness (mm):

Min: 1 Max: 6 Ave: 2

Outer to Inner Layers (mm)

	Min	Max	Ave	Texture & Color
1	1	6	2	very thin, up to 1mm thick, weathered, dark brown, yellow, med. grained
2				
3				
4				
5				
6				



Comments and XRD Mineralogy:

Sub _____

Substrate Description

Rock Type: Basalt

Description: Glassy rinds some
dense breccia with angular volcanic
fragments and glass. Some vugs
and filled vugs in basalt.

Biology (?): _____

Described by: A. Schuetz

Subsampled by: _____

Samples w/ glass

SAMPLE DESCRIPTION

Box 10/12

Volcanic Glass

Cruise Id: L1-76-MX

Size (mm): pebble-cobble size

Location: Gulf of CA S Pescadero Basin

Sample Id: DIS Mn1, Mn2, Mn3, Mn4
Vn5, Vn8, Vn9, Vn20, Vn35
Vn18, Vn30, Vn39, Vn36

Weight (kg): 50+ pieces @ 7.4 kg

Depth (m):

Mn Crust Description

Surface Texture: Rounded, irregular, lots of volcanic glass

Mn Crust Thickness (mm):

Min: 3 Max: 5 Ave: 4

Outer to Inner Layers (mm)

	Min	Max	Ave	Texture & Color
1	3	5	4	Dark brown-yellow, parallel clay laminations. Some
2				fine grained fragments and fine glass. Lots
3				of weathered, thin Fe/Mn oxides on surface of samples.
4				
5				
6				



Comments and XRD Mineralogy:

Subs:

Substrate Description

Rock Type: basalt, Breccia w/ glass

Description: fine grained dark weathered

fractured, porous basalt. Thick glass/coring

find up to 1cm thick. Breccia with some

basalt angular clasts up to 30cm long. Lots of

black-blue volcanic glass shards and

Biology(?): levers a few mm thick. Altered,

weathered basalt breccia matrix

Described by:

AS

Subsampled by:

Gulf of CA
S. Pescadero Basin

Cruise Id: L1-76-MX Size (mm): 190x170x113 Location: _____
 Sample Id: D155 Weight (kg): 3.58 Depth (m): _____
Mn7

Mn Crust Description

Surface Texture: Rounded Fractured
irregular

Mn Crust Thickness (mm):

Min: 13 Max: 23 Ave: 15

Outer to Inner Layers (mm)

	Min	Max	Ave	Texture & Color
1	13	23	15	Dark brown, ylw specks pearly laminated fine grained clastic
2				
3				
4				
5				
6				



D155-Mn7

Comments and XRD Mineralogy:

Sub: _____

Substrate Description

Rock Type: Breccia

Description: oolitic, angular fragments
up to 15mm long fractures,
porous, 15mm thick, green, granular
friable semi-oolitic layer. Yellow-orange
thin soft layer on substrate surface.

Biology (?): _____

Described by: A Schaefer

Subsampled by: _____

SAMPLE DESCRIPTION

Box 11/12

Cruise Id: L1-76-MX Size (mm): _____ Location: Gulf of CA
 Sample Id: ^{D155} 31, Mn7, V3, 33, V52 Weight (kg): 31 pieces @ 6.8 kg Depth (m): S. Pasmadero Basin

Mn Crust Description

Surface Texture: Rounded, irregular
Fractured. Dribble green material

Mn Crust Thickness (mm):

Min: 13 Max: 23 Ave: 15

Outer to Inner Layers (mm)

	Min	Max	Ave	Texture & Color
1	13	23	15	Dark brown-yellow specks, coarse
2				laminated, fine grained clasts.
3				
4				
5				
6				



Comments and XRD Mineralogy:

Sul _____ layer thick. (wt%)
 XRD: B1: Qtz, Plag, Pyrox, Smeedite
 B3: Qtz, Plag, Pyrox, Smeedite, Chlorite
 V3: Plag, Pyrox, Pyrite, Qtz, Smeedite
 V18: Amorphous smectite, Plag, chlorite, Qtz, Hematite
 V27: Plag, Pyrox, Smeedite, Qtz, Calcite?

Substrate Description

Rock Type: Unknown Affinity
Rxs w/ Oolitic Textures

Description: porous, oolitic, angular fragments
up to 15mm long, 15mm thick green granules,
dribble, semi-oolitic layer, yellow-orange thin
soft layer on substrate surface, fine grained
basalt oolitic quartz filled vesicles.

Biology (?): _____

Mn-7 - breccia w/ oolitic tex in places; 5mm thick crust + rim of grain fault(?) breccia- Fe-Mn
 B1 - Laminar + oolitic yellow-brown to grey
 B3 - oolitic mottled reddish-brown + grey
 V3 - mottled green + black
 V52 - dk gray w/ faint oolitic tex -

Described by: _____

Subsampled by: _____

AS

✓

SAMPLE DESCRIPTION

Box 12/12

Gulf of CA
S Pescadero Basin

Cruise Id: L1-76-MX

Size (mm): pebble to cobble size

Location: _____

Sample Id: D155
S1, S2

Weight (kg): 10 pieces @ 4 kg

Depth (m): _____

Min Crust Description

Surface Texture: rounded, altered, friable
fractured green material

Min Crust Thickness (mm):

Min: _____ Max: _____ Ave: _____

Outer to Inner Layers (mm)

	Min	Max	Ave	Texture & Color
1	1	20	11	green-white, non laminated, highly fractured, altered, fine grained
2				
3				
4				
5				
6				



D155
S1

Comments and XRD Mineralogy:

Subs

XRD S1: Qtz, Pyrx, Plag or K spar

Substrate Description

Rock Type: Silicified Volcanic Rx(?)

Description: Red-brown, fine grained

highly fractured, vesicular quartz filled

veins and vesiclog (lots like Red-brown chert w/)

greenish-schistose Rind several centimeters thick - Zr content > 0.1%

S2 - mottled black, red, green silicified Volc Rx(?)

Biology(?):

diffuse

Described by:

AS

Subsampled by:



D 155
S2

SAMPLE DESCRIPTION

BOX 12112

Cruise Id: 21-76-MX Size (mm): cobble size Location: Gulf of CA
 Sample Id: DISE Weight (kg): 3 pieces @ .78 kg Depth (m): S Pescadero Basin

Mn Crust Description

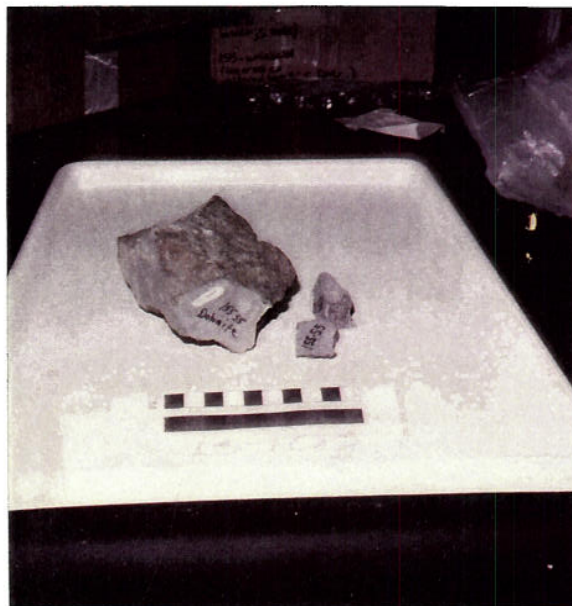
Surface Texture: Angular, weathered,
Fe stained

Mn Crust Thickness (mm):

Min: _____ Max: _____ Ave: _____

Outer to Inner Layers (mm)

	Min	Max	Ave	Texture & Color
1				
2				
3				
4				
5				
6				



Comments and XRD Mineralogy:

Sub _____
 XRD: SS: Dolomite, plag, Qtz

Substrate Description

Rock Type: Dolomite

Description: Gray, fine grained,
granular, weathered rind, vugs in few
fragments(?) Areas(?); pyrite(?)

Biology (?): _____

Described by: _____

Subsampled by: _____

AS

✓