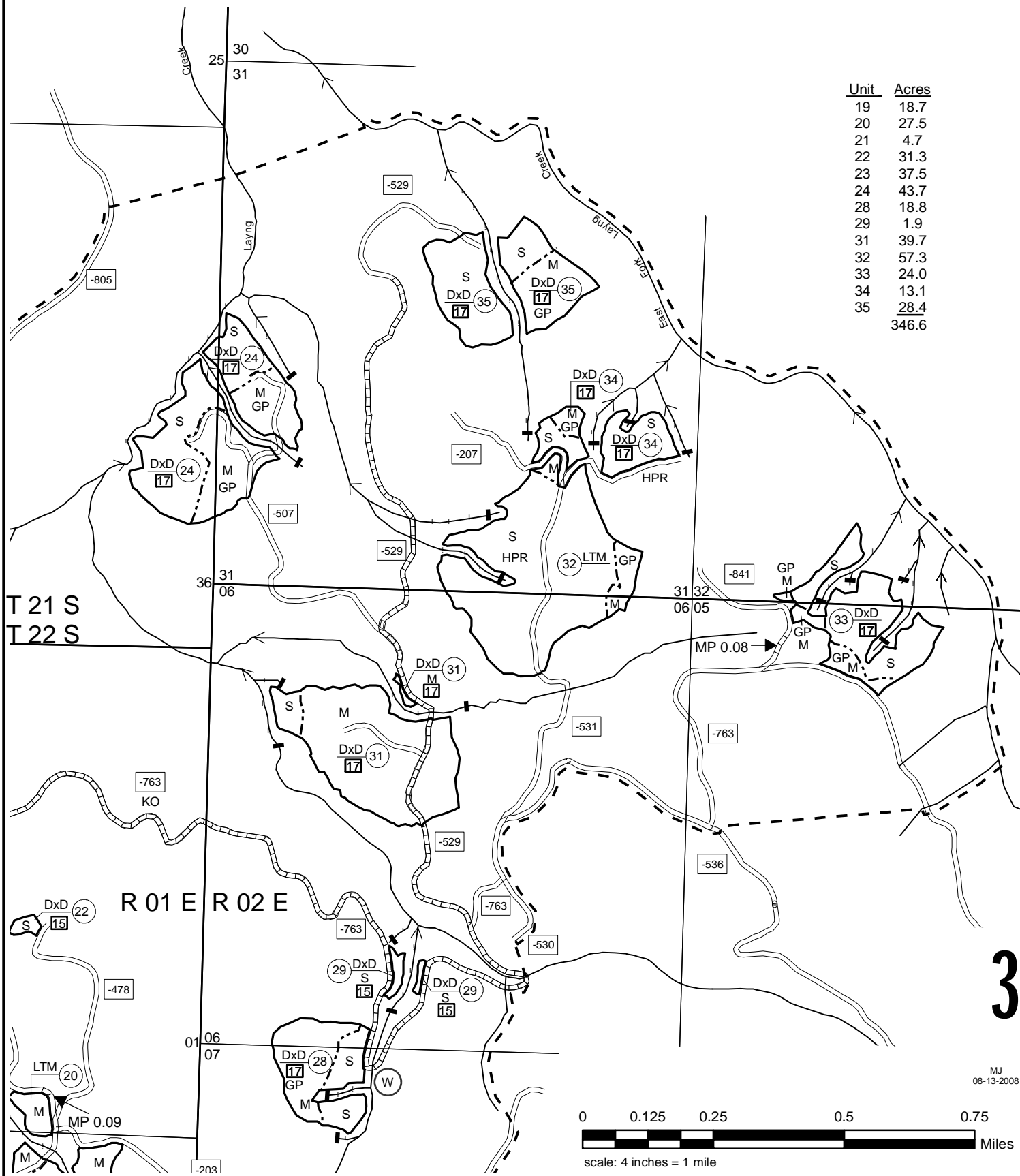
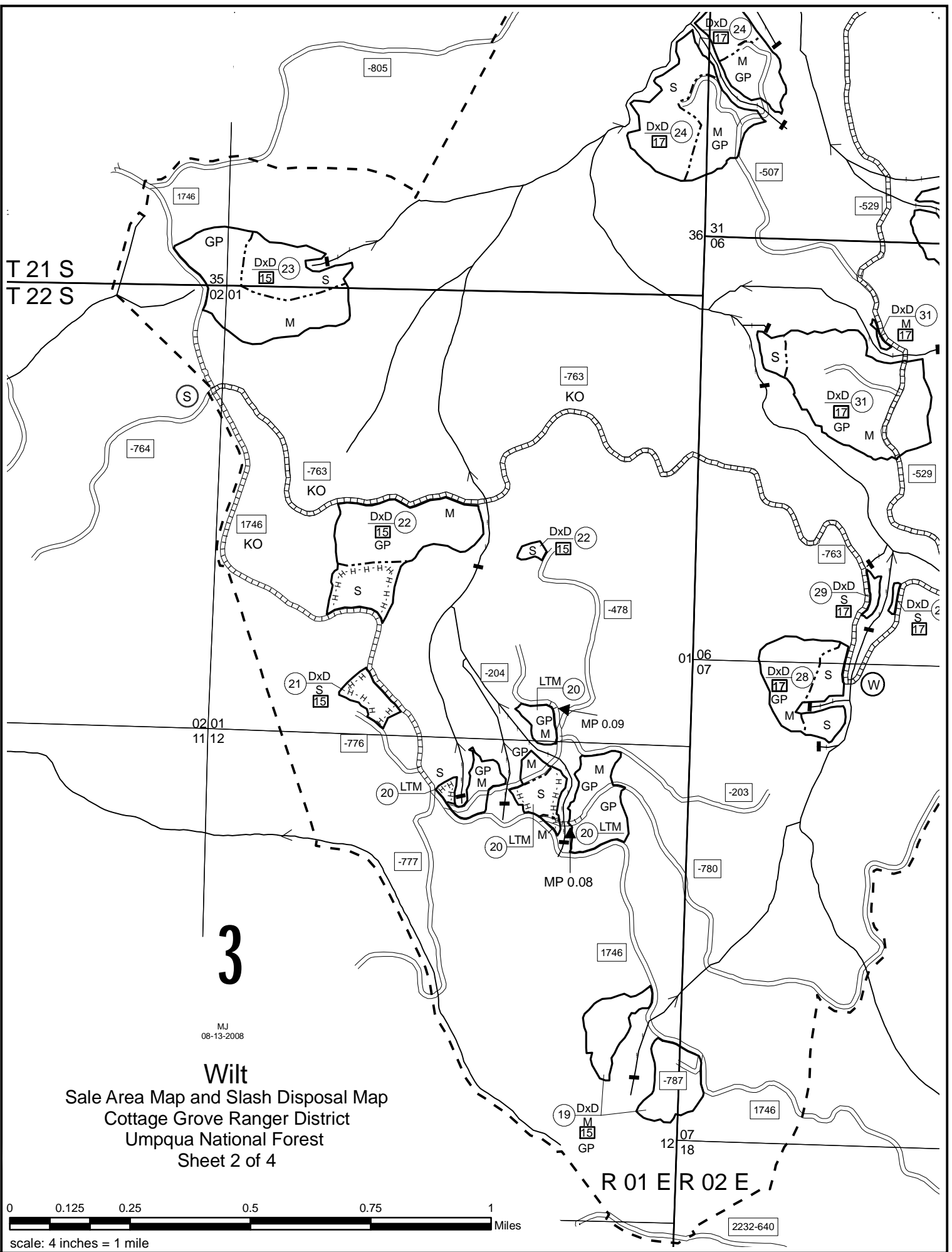


Wilt
Sale Area Map and Slash Disposal Map
Cottage Grove Ranger District
Umpqua National Forest
Sheet 1 of 4



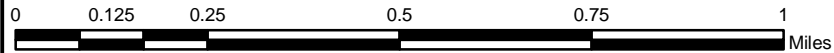
3



3

MJ
08-13-2008

Wilt
 Sale Area Map and Slash Disposal Map
 Cottage Grove Ranger District
 Umpqua National Forest
 Sheet 2 of 4

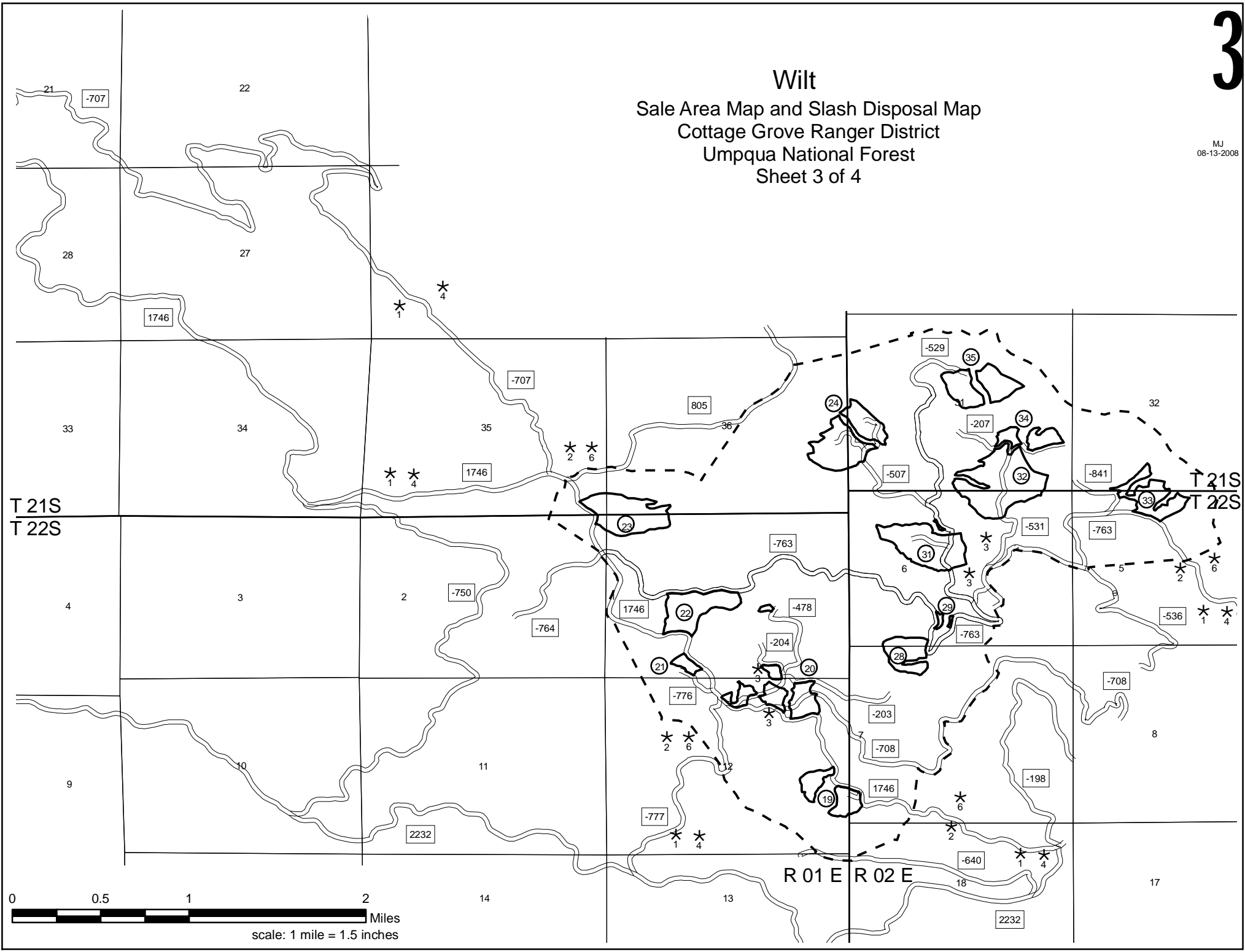


scale: 4 inches = 1 mile

R 01 E R 02 E







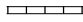


Wilt
Sale Area Map and Slash Disposal Map
Cottage Grove Ranger District
Umpqua National Forest
Sheet 3 of 4

MJ
08-13-2008



Wilt Timber Sale
 Sale Area and Slash Disposal Map
 Cottage Grove Ranger District
 Umpqua National Forest
 Sheet 4 of 4

Legend

	Sale Area Boundary, B1.1, B2.3.		Specified Yarding Boundary, B6.42.
	Subdivision Marked Prior to Advertisement, B1.1, B2.3.		Stream Protection Required, B6.5.
DxD	Designation by Description, B2.35, C2.35# (Option 1).	H - H - H	Hand Fireline, C6.74#.
	Designation by Description Spacing in Feet, B2.35, C2.35# (Option 1).	HPR	Handpiling within 100ft of road, 6.74#.
	Existing Transportation System Road, C5.12#.	GP	Grapple Piling, C6.74#.
	Specified Road Reconstruction, B5.2, A9.		Stock Pile Site C5 .221#
	Water Source, C5.31#.	KO	keep open, B6.22
M	Mechanized Yarding Specified, B6.42, C6.42#.		
X	Protect Known Survey Monument, B6.23.		
S	Skyline Yarding Specified, B6.42, C6.42#.		

Notes

All landlines are approximate.

Do not cut dead trees outside subdivision boundaries except for safety reasons, B2.35.

Leave standing all unmarked dead timber within subdivision boundary except for safety reasons, B2.35.

All designated survey monument bearing trees shall have a maximum stump height of not less than 6 inches above the official inscription or poster, B6.23.

Purchaser shall post warning signs prior to operations on or adjacent to forest system roads and trails, B6.33.

Equipment needs to be free of soil, vegetative material, seeds and other debris that could hold seeds, B6.35.

Directional felling required in all subdivisions, C6.41#.

Location of all forwarder roads, skid trails, and corridors will be agreed upon prior to felling operations, C6.42#.

Purchaser shall subsoil all temporary roads, skid trails, and landings not located on forest system roads to a depth of 20 inches, C5.1# (Option 1), C6.6#.






Piling and covering of landing slash required, C6.74#.

Handpiling and covering of roadway slash required on all roads, C6.74#.

Rock must be attained from commercial source and can be stockpiled at site on the S.A.M. C5.221#

Supplemental Requirements:

Required Sign Locations and Number References

- Sign No.  1 "Logging Operations Ahead"
- Sign No.  2 "Logging Operations"
- Sign No.  3 "For Logging Use Only"
- Sign No.  4 "Trucks"
- Sign No.  6 "Tree Felling Ahead"