

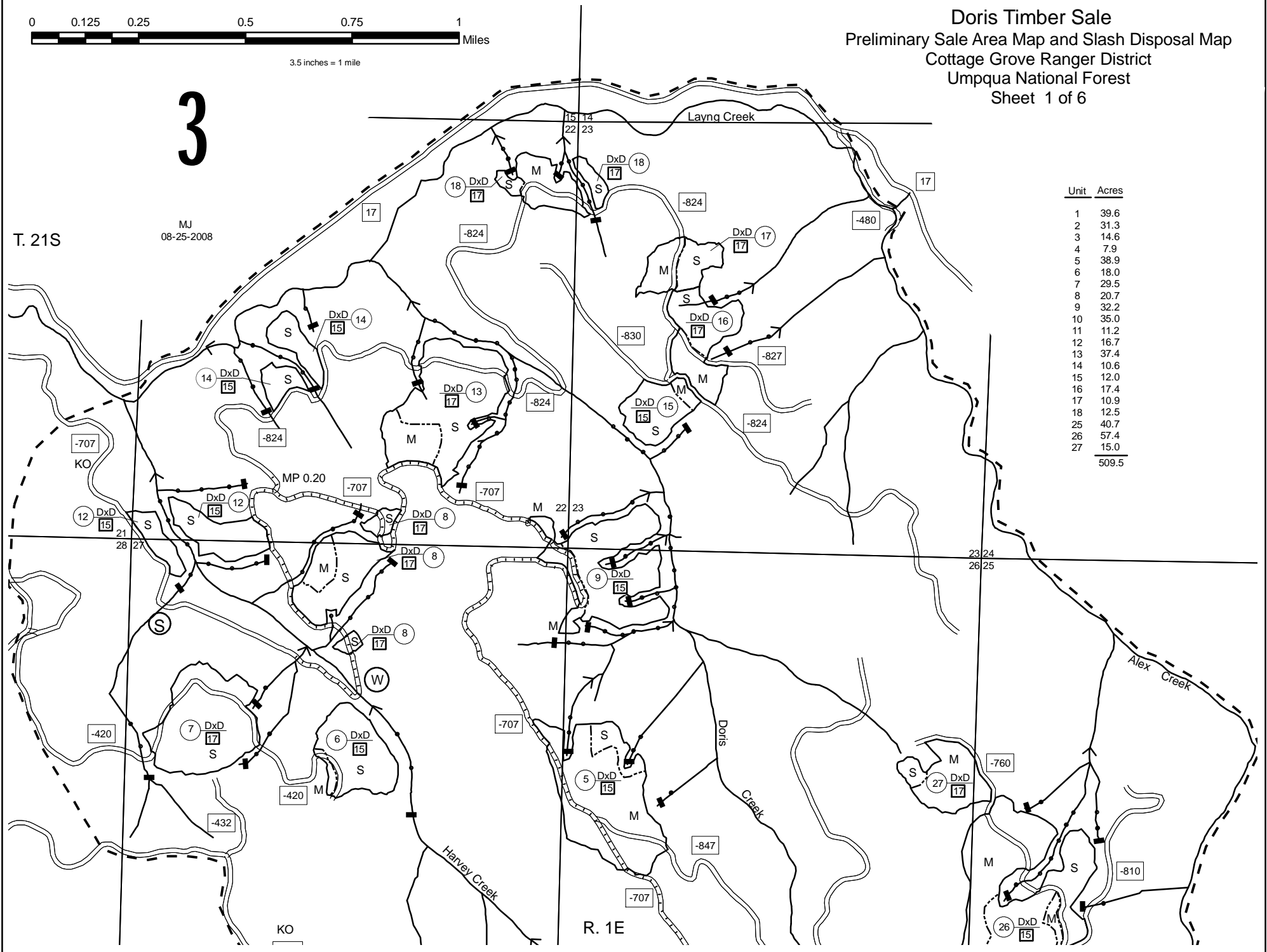
Doris Timber Sale
Preliminary Sale Area Map and Slash Disposal Map
 Cottage Grove Ranger District
 Umpqua National Forest
 Sheet 1 of 6

3

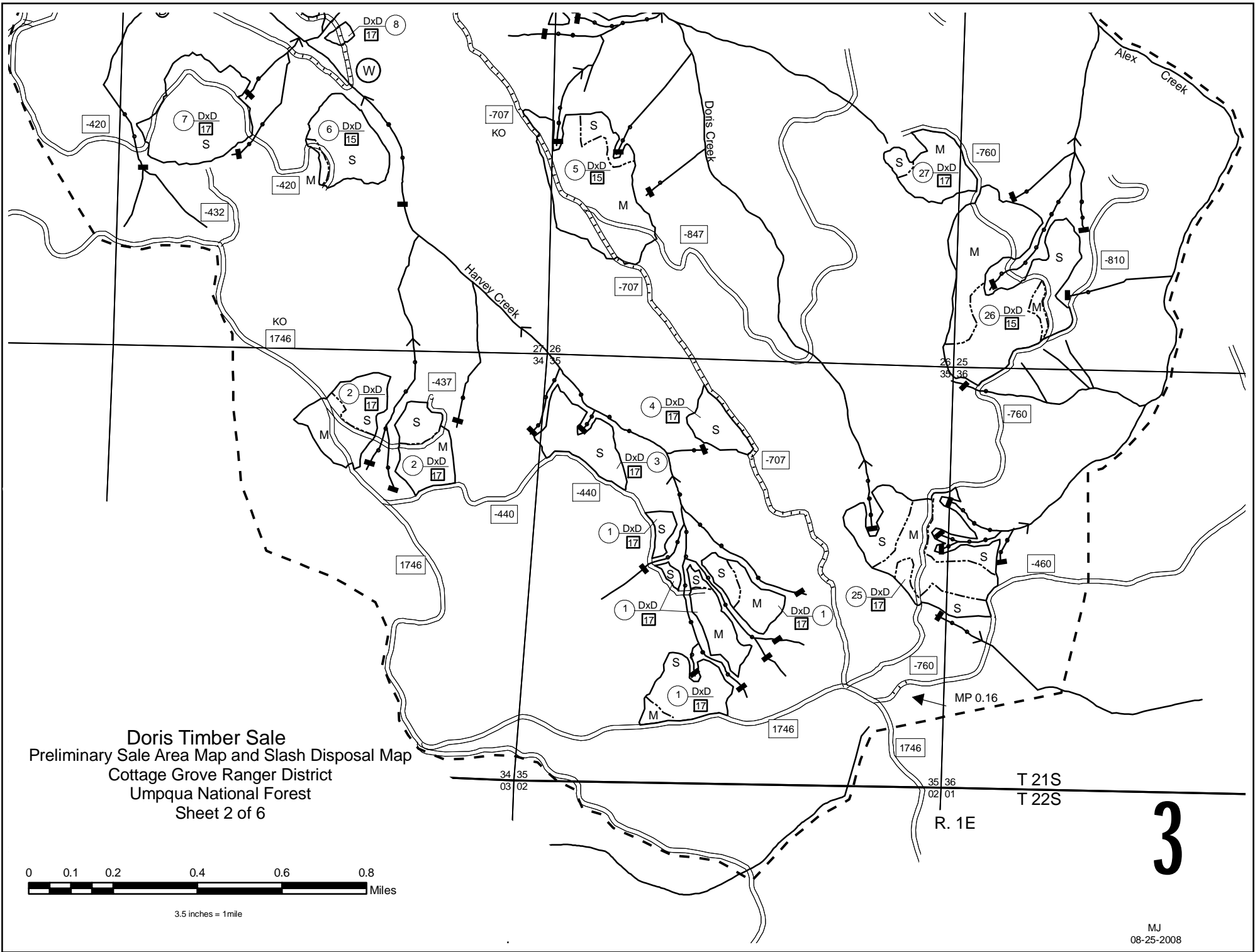
T. 21S

MJ
08-25-2008

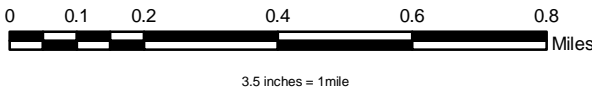
Unit	Acres
1	39.6
2	31.3
3	14.6
4	7.9
5	38.9
6	18.0
7	29.5
8	20.7
9	32.2
10	35.0
11	11.2
12	16.7
13	37.4
14	10.6
15	12.0
16	17.4
17	10.9
18	12.5
25	40.7
26	57.4
27	15.0
Total	509.5



R. 1E



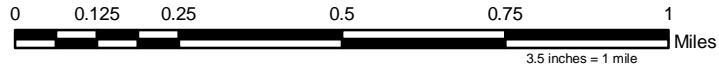
Doris Timber Sale
 Preliminary Sale Area Map and Slash Disposal Map
 Cottage Grove Ranger District
 Umpqua National Forest
 Sheet 2 of 6



T 21S
 T 22S
 R. 1E

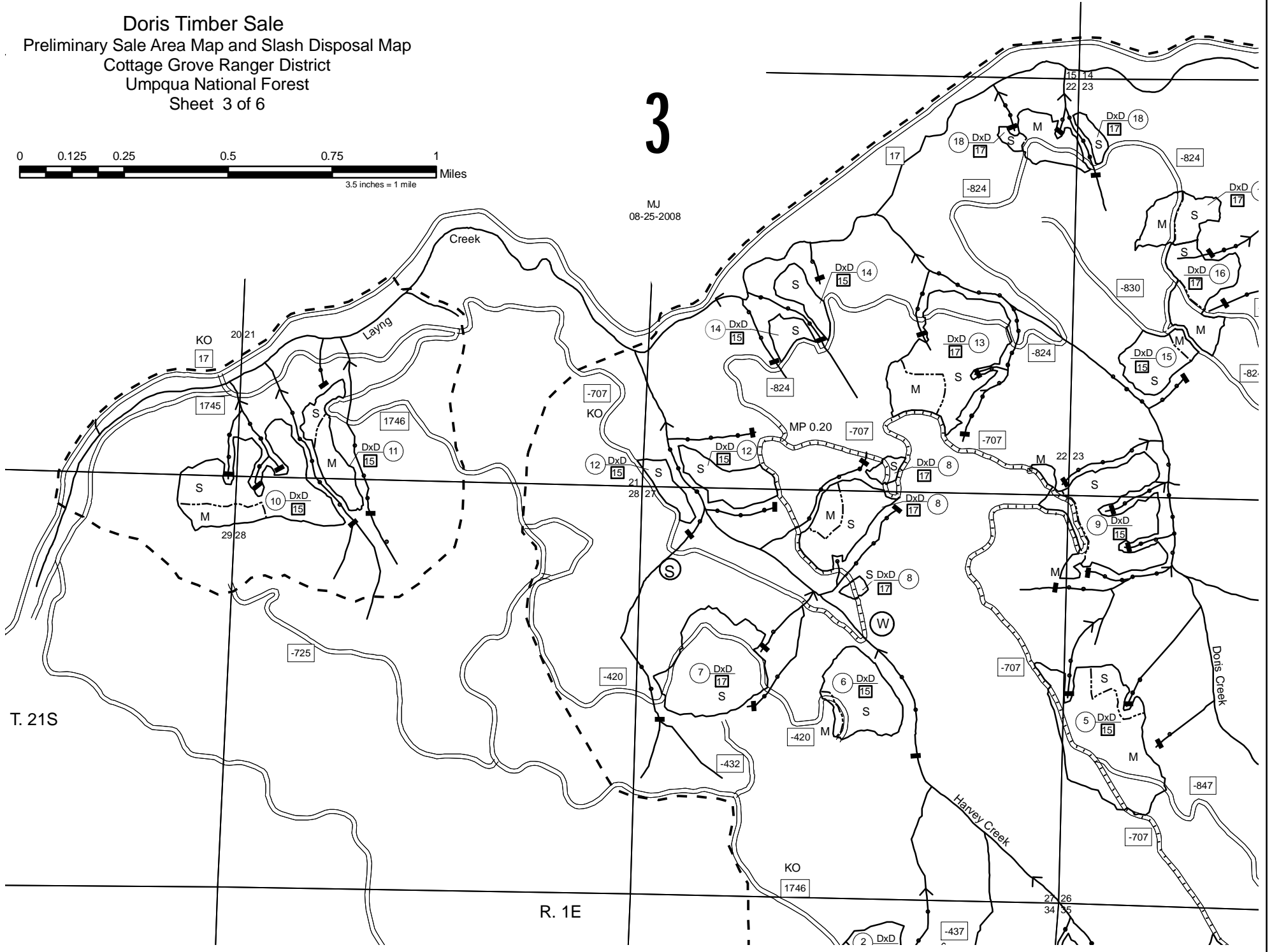
3

Doris Timber Sale
Preliminary Sale Area Map and Slash Disposal Map
Cottage Grove Ranger District
Umpqua National Forest
Sheet 3 of 6



3

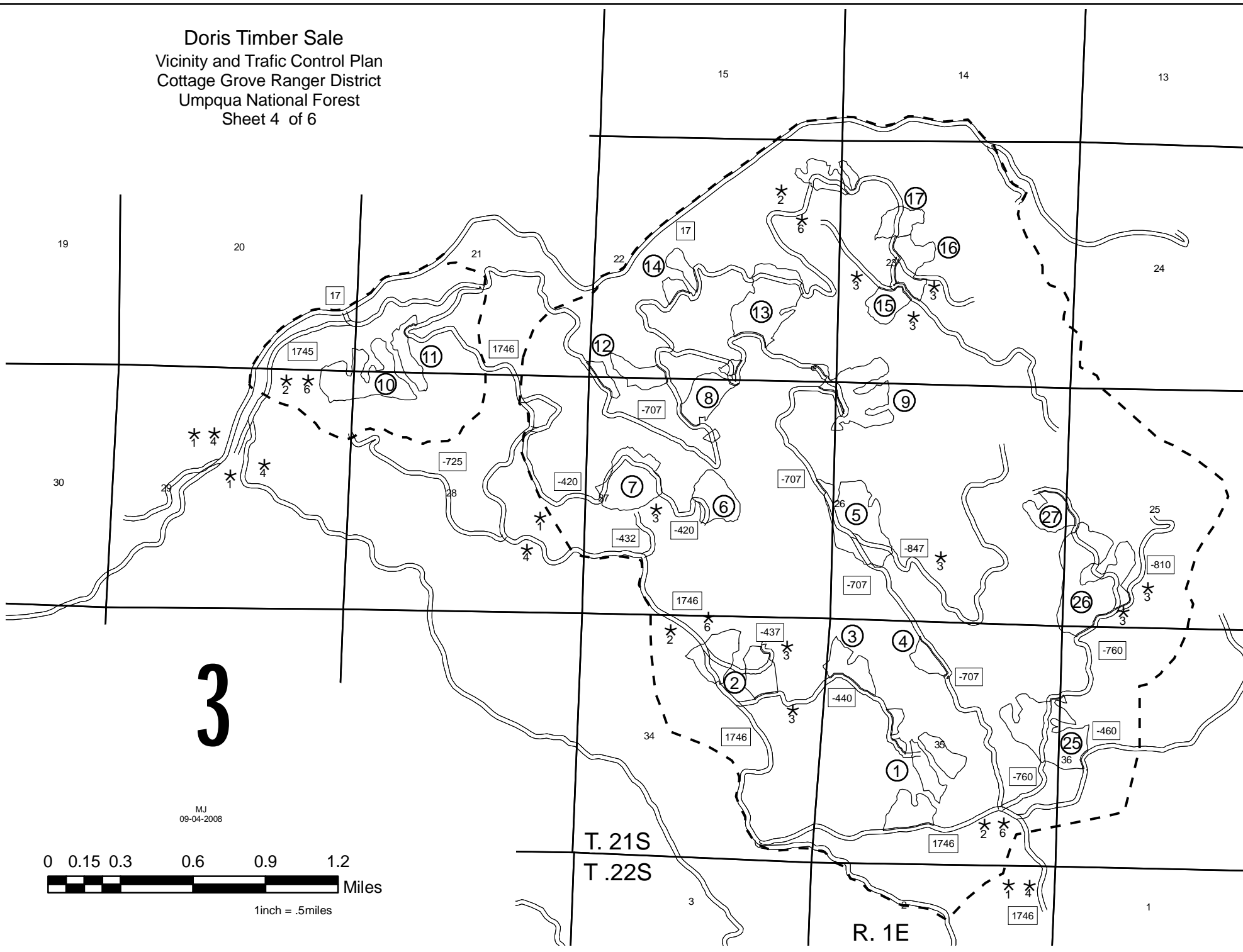
MJ
08-25-2008

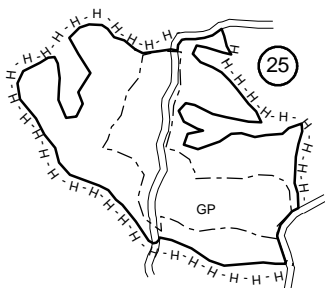
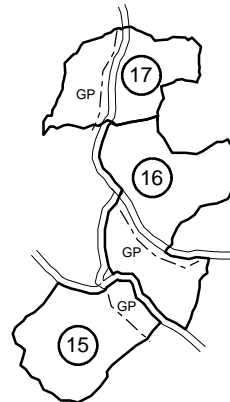
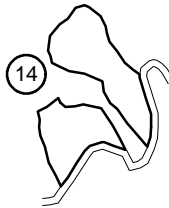
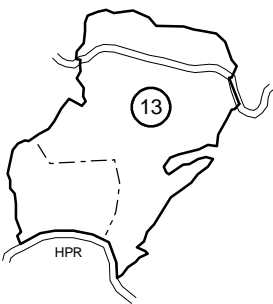
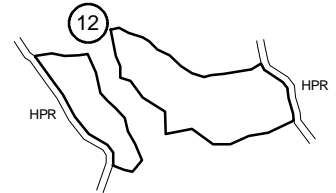
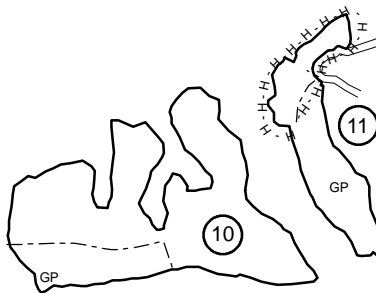
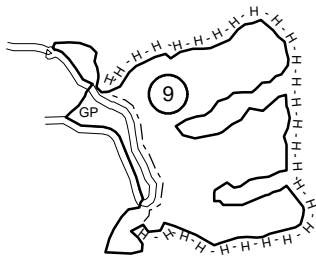
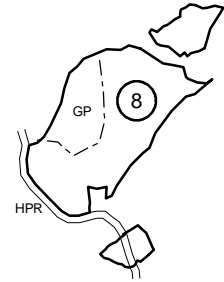
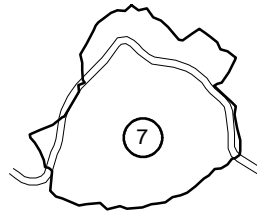
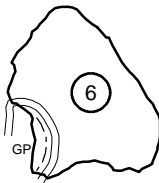
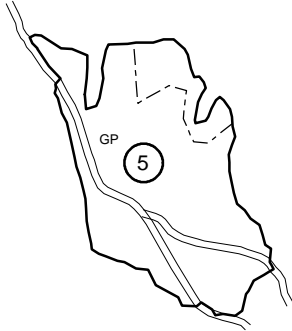
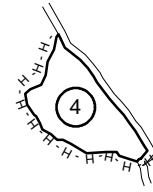
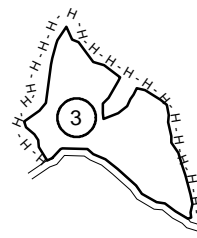
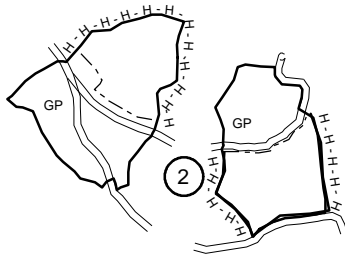
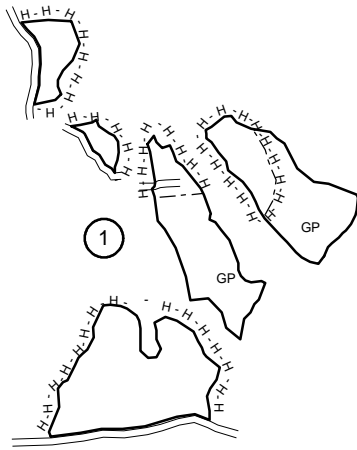


T. 21S

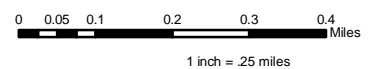
R. 1E

Doris Timber Sale
Vicinity and Traffic Control Plan
Cottage Grove Ranger District
Umpqua National Forest
Sheet 4 of 6




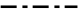


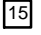

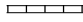




Doris Timber Sale
 Sale Area and Slash Disposal Map
 Cottage Grove Ranger District
 Umpqua National Forest
 Sheet 5 - 6



Doris Timber Sale
 Sale Area and Slash Disposal Map
 Cottage Grove Ranger District
 Umpqua National Forest
 Sheet 6 of 6

Legend


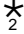



	Sale Area Boundary, B1.1, B2.3.		Specified Yarding Boundary, B6.42.
	Subdivision Marked Prior to Advertisement, B1.1, B2.3.		Stream Protection Required, B6.5.
DxD	Designation by Description, B2.35, C2.35# (Option 1).	H - H - H	Hand Fireline, C6.74#.
	Designation by Description Spacing in Feet, B2.35, C2.35# (Option 1).	HPR	Handpiling within 100ft of road 1746-707, C6.74#.
	Existing Transportation System Road, C5.12#.	GP	Grapple Piling, C6.74#.
	Specified Road Reconstruction, B5.2, A9.		Stock Pile and Waste Disposal Site C5.221#
	Water Source, C5.31#.	KO	Keep Open, B6.22
M	Mechanized Yarding Specified, B6.42, C6.42#.		
S	Skyline Yarding Specified, B6.42, C6.42#.		

Notes

- All landlines are approximate.
- Do not cut dead trees outside subdivision boundaries except for safety reasons, B2.35.
- Leave standing all unmarked dead timber within subdivision boundary except for safety reasons, B2.35.
- All designated survey monument bearing trees shall have a maximum stump height of not less than 6 inches above the official inscription or poster, B6.23.
- Purchaser shall post warning signs prior to operations on or adjacent to forest system roads and trails, B6.33.
- Equipment needs to be free of soil, vegetative material, seeds and other debris that could hold seeds, B6.35.
- Directional felling required in all subdivisions, C6.41#.
- Location of all forwarder roads, skid trails, and corridors will be agreed upon prior to felling operations, C6.42#.
- Purchaser shall subsoil all temporary roads, skid trails, and landings not located on forest system roads to a depth of 20 inches, C5.1# (Option 1), C6.6#.
- Piling and covering of landing slash required, C6.74#.
- Handpiling and covering of roadway slash required on all roads, C6.74#.
- Protect all found survey monuments B6.23

Supplemental Requirements:

Required Sign Locations and Number References

- Sign No.  1 "Logging Operations Ahead"
- Sign No.  2 "Logging Operations"
- Sign No.  3 "For Logging Use Only"
- Sign No.  4 "Trucks"
- Sign No.  6 "Tree Felling Ahead"