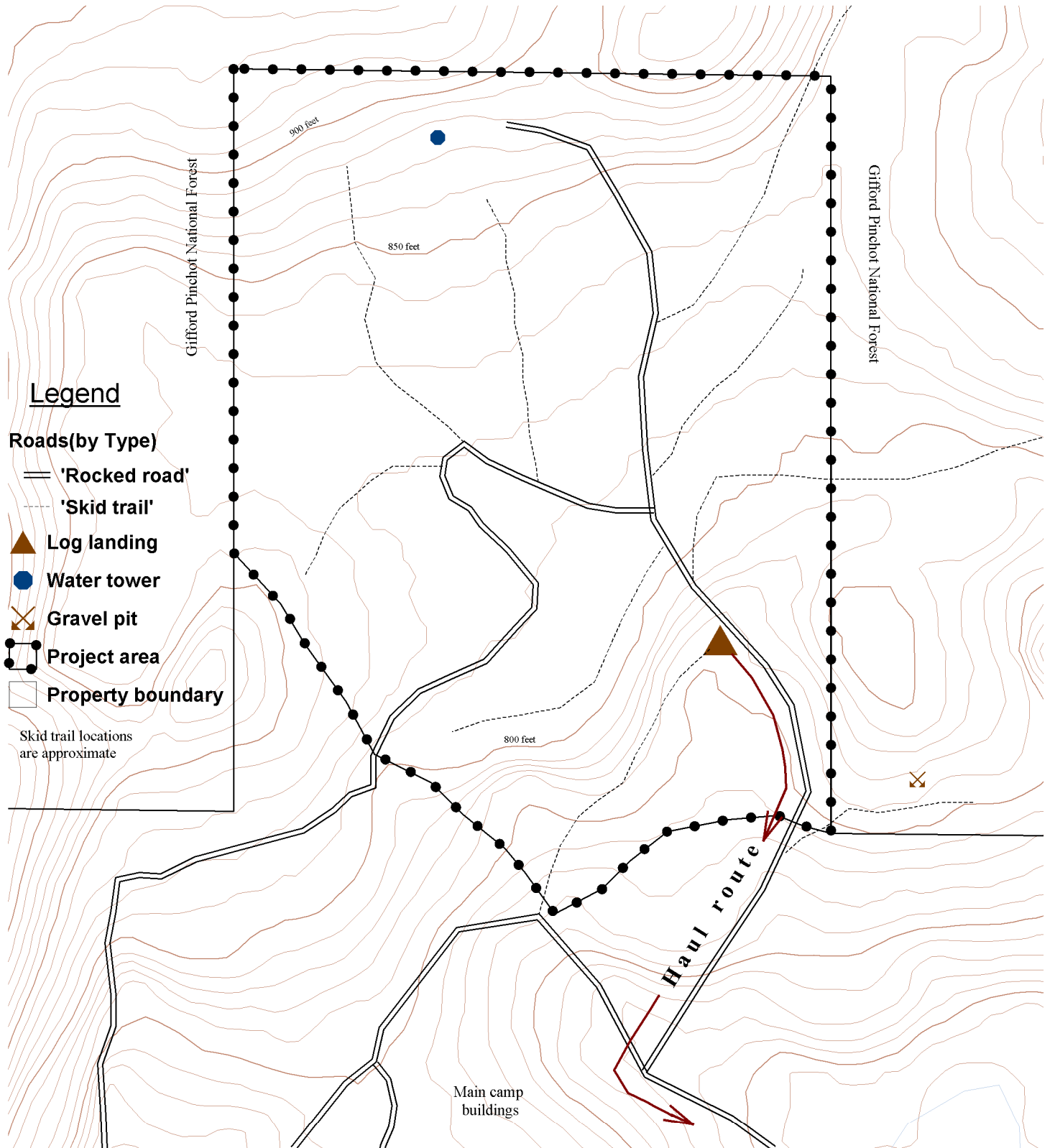


# Camp Arrowhead - Forest thinning project site plan

Columbia River Council of Girl Scouts



## Legend

### Roads(by Type)

— 'Rocked road'

- - - 'Skid trail'

▲ Log landing

● Water tower

⊗ Gravel pit

⬜ Project area

▭ Property boundary

Skid trail locations  
are approximate

700

0 US Feet

Scale = 1 : 300.00 (In : US Feet)

UTM, NAD 83, 10

