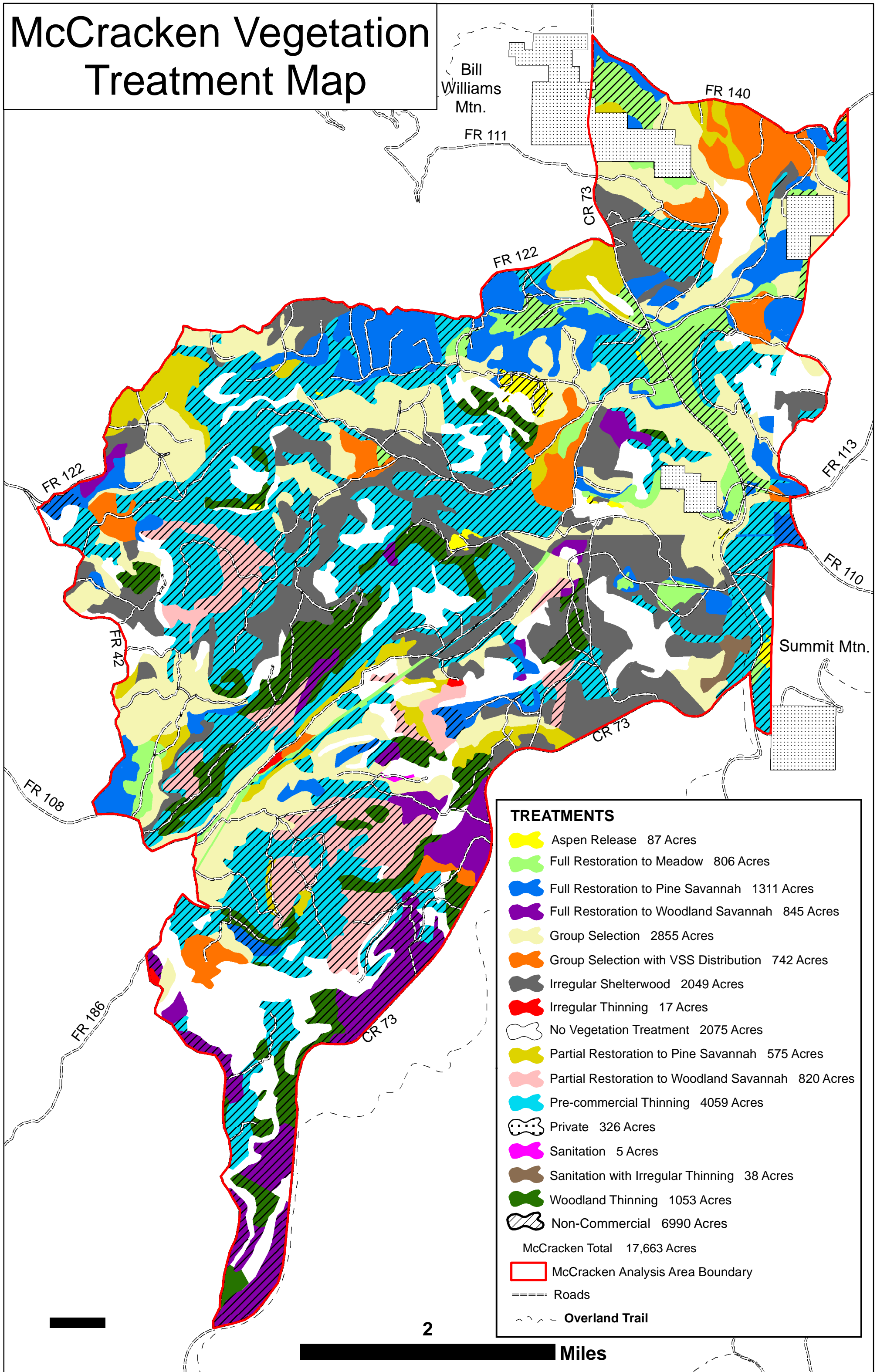







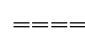
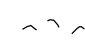


McCracken Vegetation Treatment Map



TREATMENTS

-  Aspen Release 87 Acres
-  Full Restoration to Meadow 806 Acres
-  Full Restoration to Pine Savannah 1311 Acres
-  Full Restoration to Woodland Savannah 845 Acres
-  Group Selection 2855 Acres
-  Group Selection with VSS Distribution 742 Acres
-  Irregular Shelterwood 2049 Acres
-  Irregular Thinning 17 Acres
-  No Vegetation Treatment 2075 Acres
-  Partial Restoration to Pine Savannah 575 Acres
-  Partial Restoration to Woodland Savannah 820 Acres
-  Pre-commercial Thinning 4059 Acres
-  Private 326 Acres
-  Sanitation 5 Acres
-  Sanitation with Irregular Thinning 38 Acres
-  Woodland Thinning 1053 Acres
-  Non-Commercial 6990 Acres
- McCracken Total 17,663 Acres
-  McCracken Analysis Area Boundary
-  Roads
-  Overland Trail