

Department of Veterans Affairs CARES Healthcare Studies

**VA New York Harbor Healthcare System
Brooklyn and New York Feasibility Study**

May 3, 2005



VA New York Harbor Healthcare System Sites

- One of five VISN 3 facilities – three of which (Hudson Valley, New Jersey and NY Harbor) are integrated health care systems
- VA NY Harbor Healthcare System consists of 3 campuses located in Bay Ridge, Brooklyn, East-side Manhattan and St. Albans, Queens
- Ambulatory care centers are located at each of the three campuses
- VA NYHHS also operates Community Based Outpatient Clinics in Harlem, Chelsea, SoHo, downtown Brooklyn and Staten Island

New York, Brooklyn, and St. Albans Campuses

- New York and Brooklyn
 - Medical, surgical and psychiatric facilities
 - » NY 171 operating beds
 - » BK 147 operating beds
- St. Albans
 - » Primary & Extended Care Facility
 - » 181 Nursing Home operating beds
 - » 50 Domiciliary operating beds

Comprehensive Health Care

Comprehensive health care is provided through primary, specialty and long-term care services:

New York

- Acute Medicine
- Surgery
- Acute Psychiatry
- Neurology
- Rehabilitation Medicine
- Emergency/ Critical Care
- Home Care

Brooklyn

- Acute Medicine
- Surgery
- Psychiatry
- Residential Substance Abuse
- Emergency/ Critical Care
- Home Care

St. Albans

- Geriatrics and extended care
- Extended care rehab
- Home care

Specialty Center-Based Care

New York: Referral Center for Cardiac Surgery, Neurosurgery, Urology and HIV/AIDS care

Brooklyn: Cancer Care and Non-invasive Cardiology

St. Albans: Dementia-geriatric care and Domiciliary

Forecasting VA Health Care Demand

Key Concepts

VA National Level Demand Forecasts

CARES Implementation Category	Inpatient Medicine Bed Days of Care	Outpatient Primary Care Clinic Stops
FY03 Actual	2.0 million	15.6 million
FY13 Projected	2.3 million	17.7 million
% Change FY13 – FY03	11%	13%
FY23 Projected	2.0 million	16.3 million
% Change FY23 – FY03	0%	4%

Projected Enrolled Veteran Population

- As of FY 2003:
 - 25 million veterans
 - 7 million of these are enrolled in VA
- Enrollment forecasted 20 years into the future by:
 - Age
 - Gender
 - Priority
 - Geographic Area

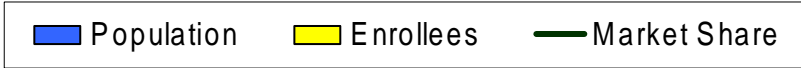
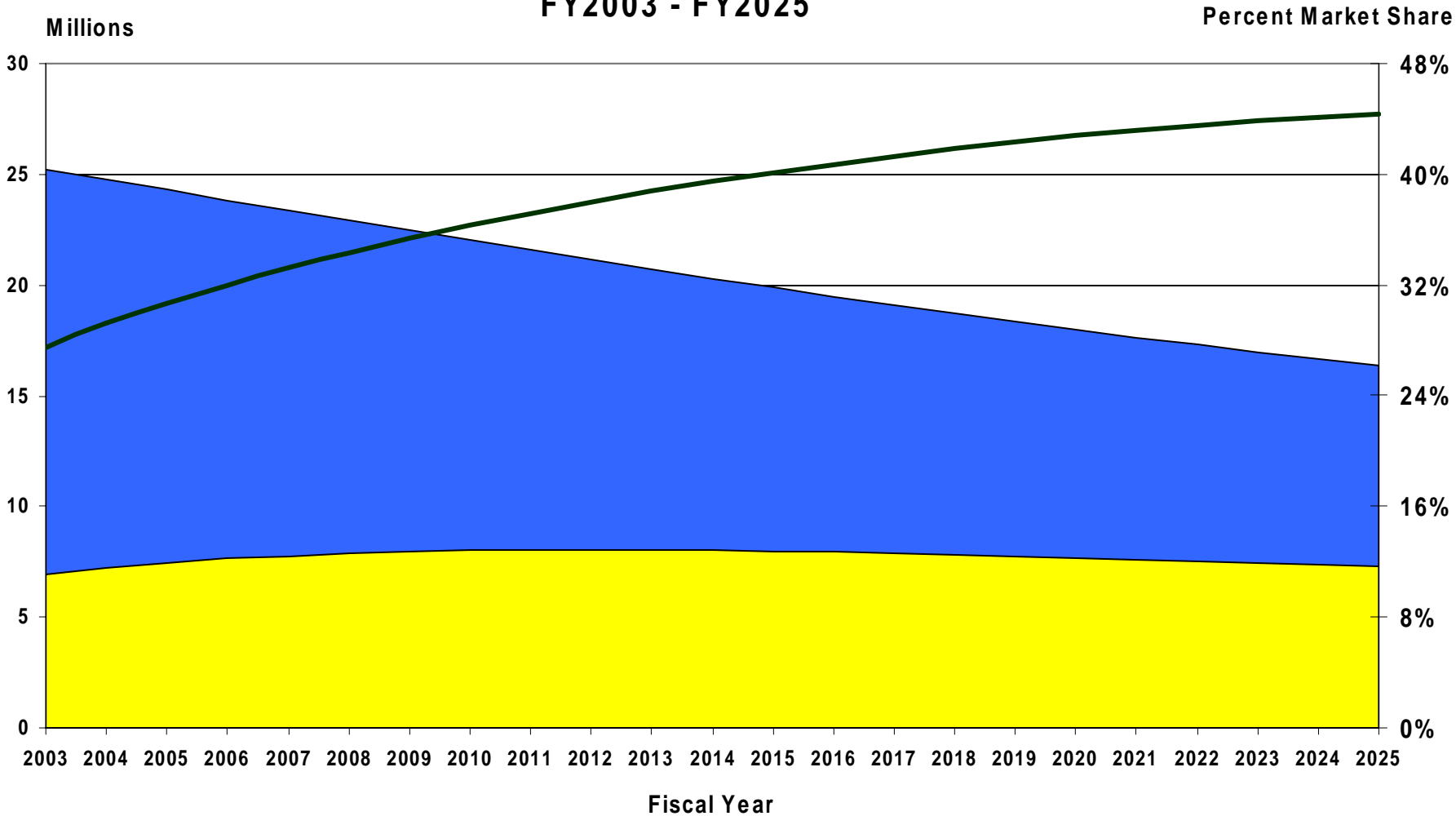
Inpatient and Outpatient Demand Forecasts

- CARES Business Plan Studies aggregated by:
 - 25 Categories of Care
 - Geographic Area (where enrollee lives)
 - VA Treating Facility

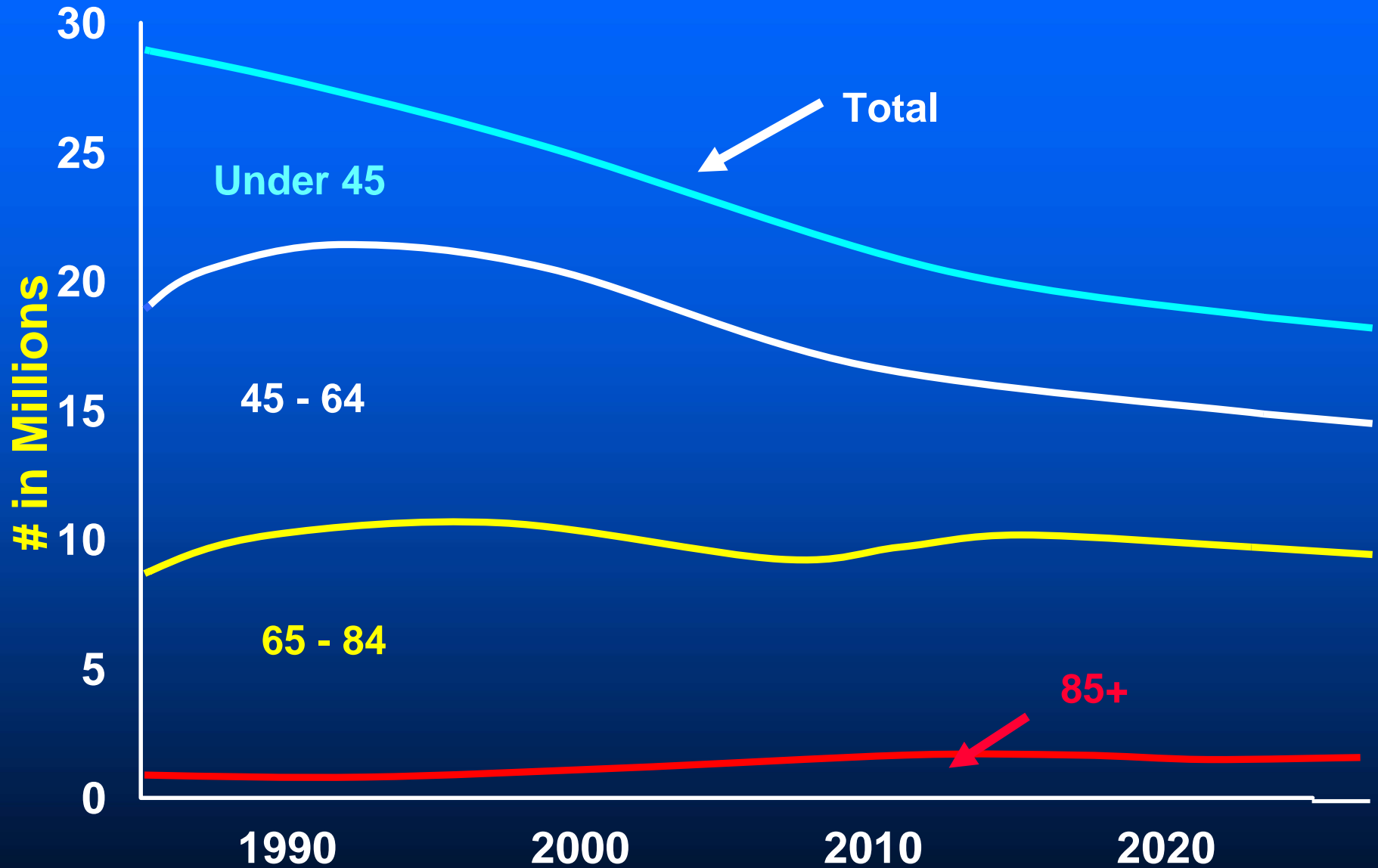
Reliance Factor Issues

- Reliance on VA Services varies by:
 - Enrollee preference for VA services vs. other health care options
 - VA supply in a given geographic area
 - » Wait lists
 - » Types of services provided at each facility
 - » Geographic location of facility

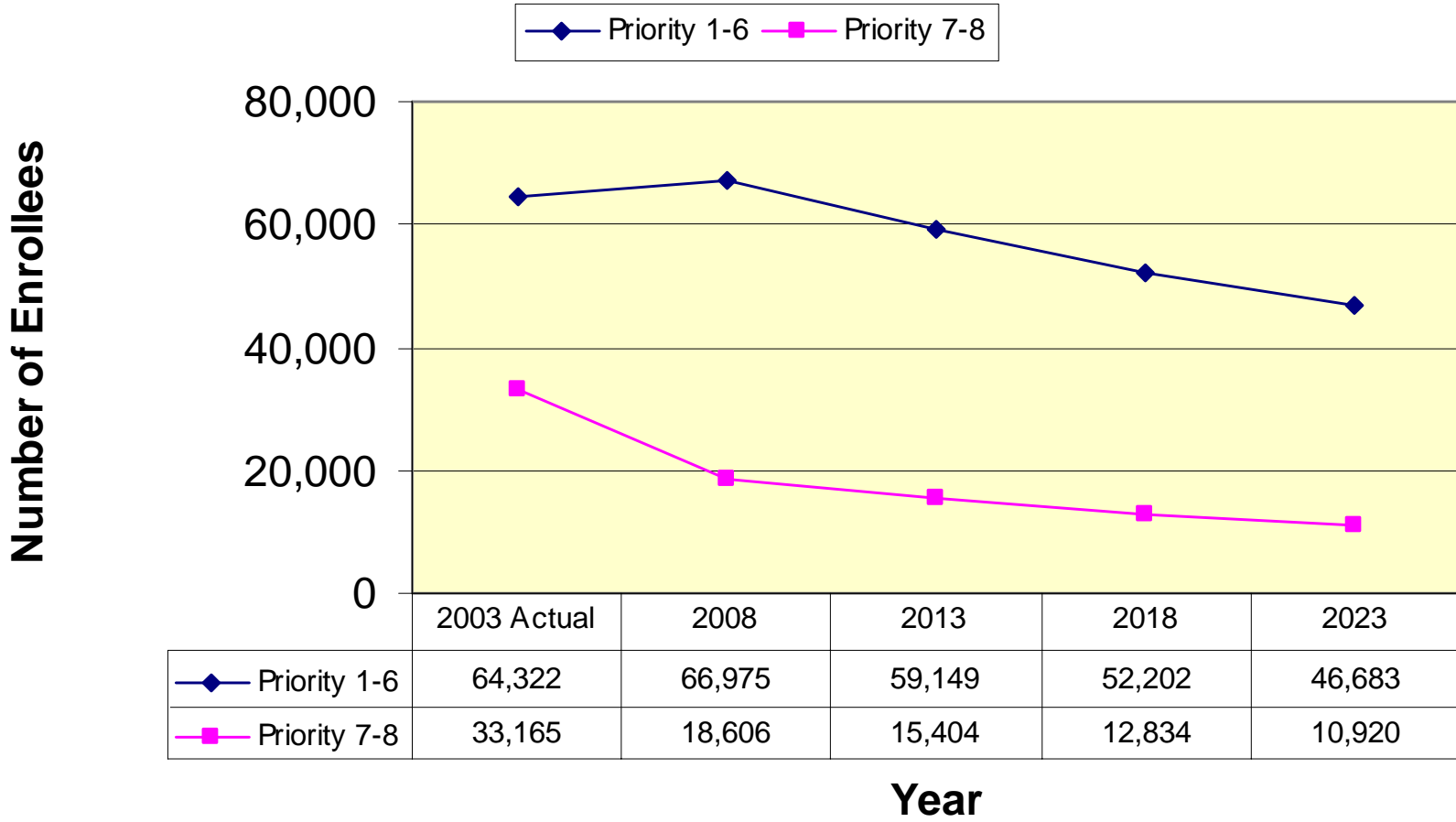
Total Veterans, National Population & Enrollee Projections FY2003 - FY2025



Only the 85+ Age Group is Projected to Increase

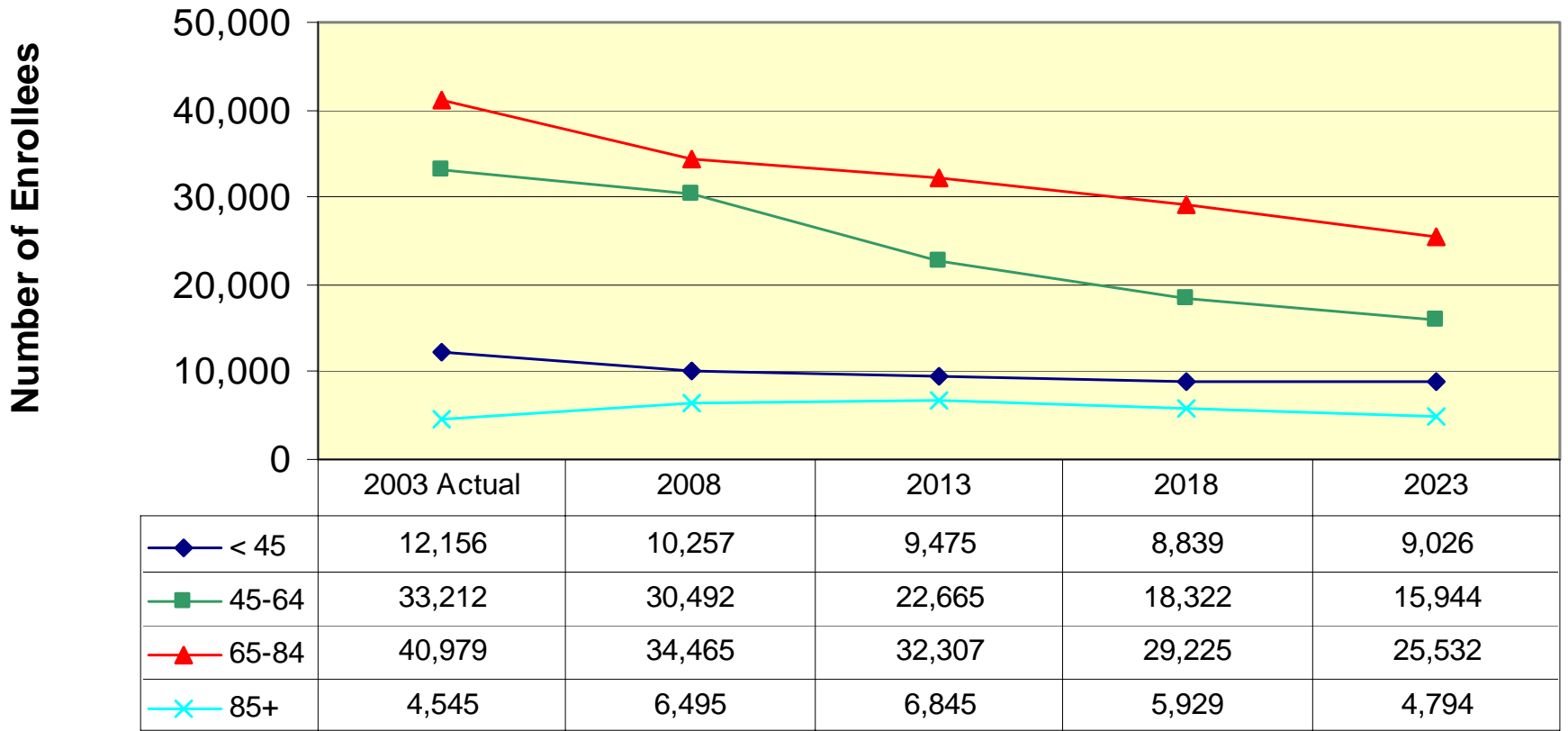
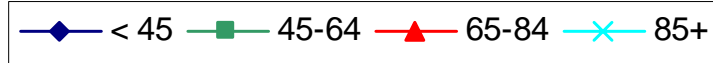


Enrollment by Priority Group (VA NY Harbor HCS Catchment Area)



◆ Priority 1-6	64,322	66,975	59,149	52,202	46,683
■ Priority 7-8	33,165	18,606	15,404	12,834	10,920

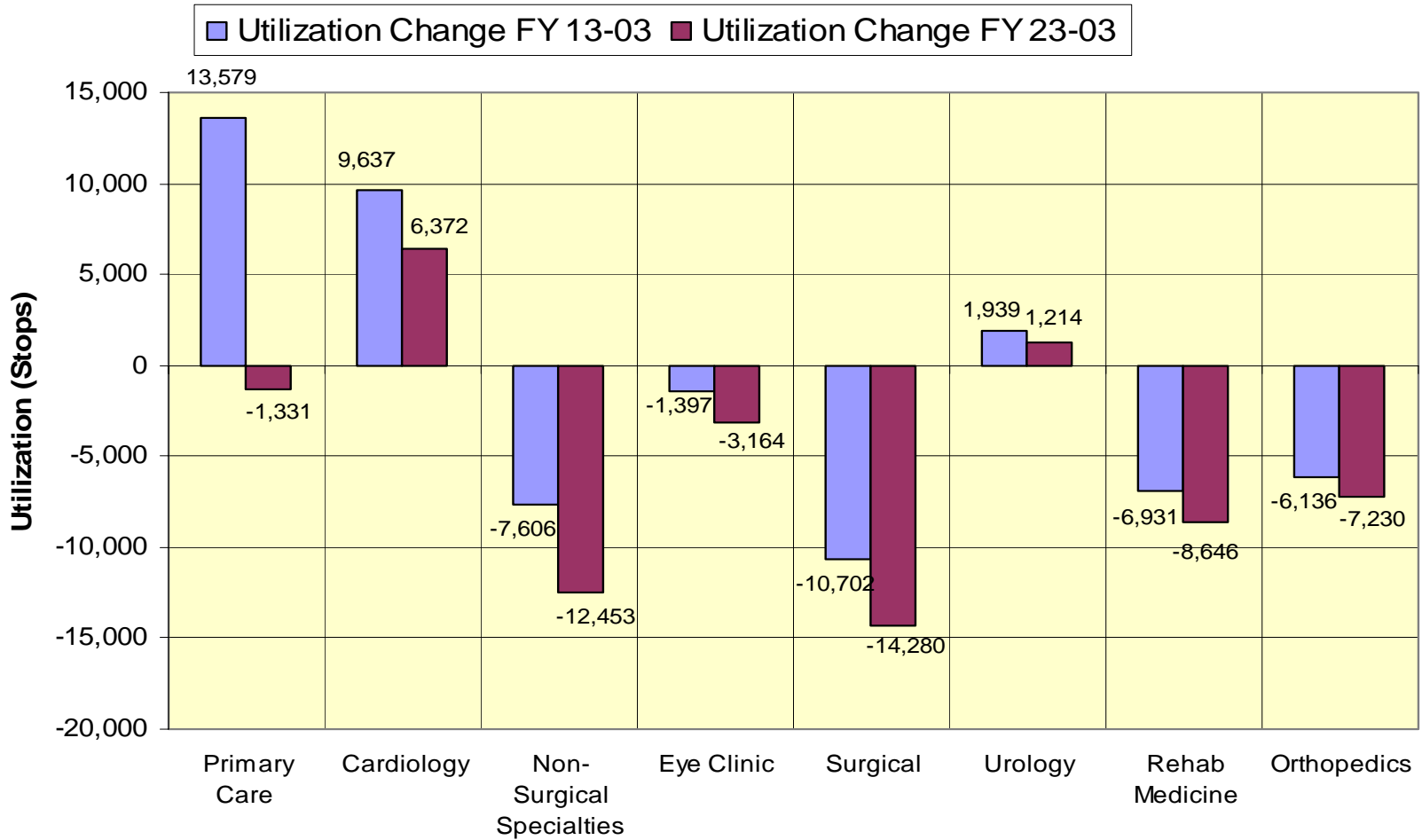
Enrollment by Age Group (VA NY Harbor HCS Catchment Area)



Year

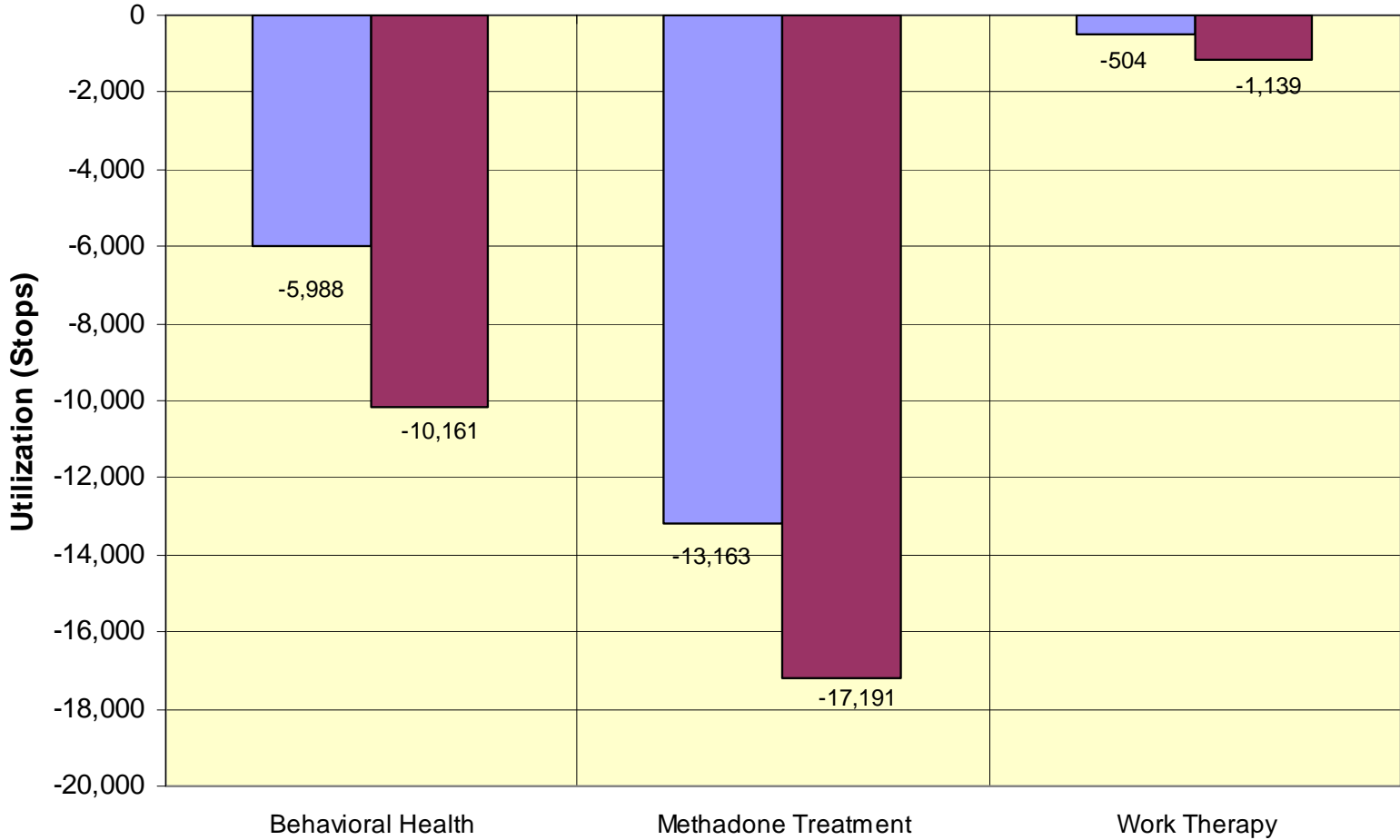
Outpatient Utilization VA NY Harbor HCS Site Perspective

Brooklyn Campus Change in Utilization (Ambulatory)

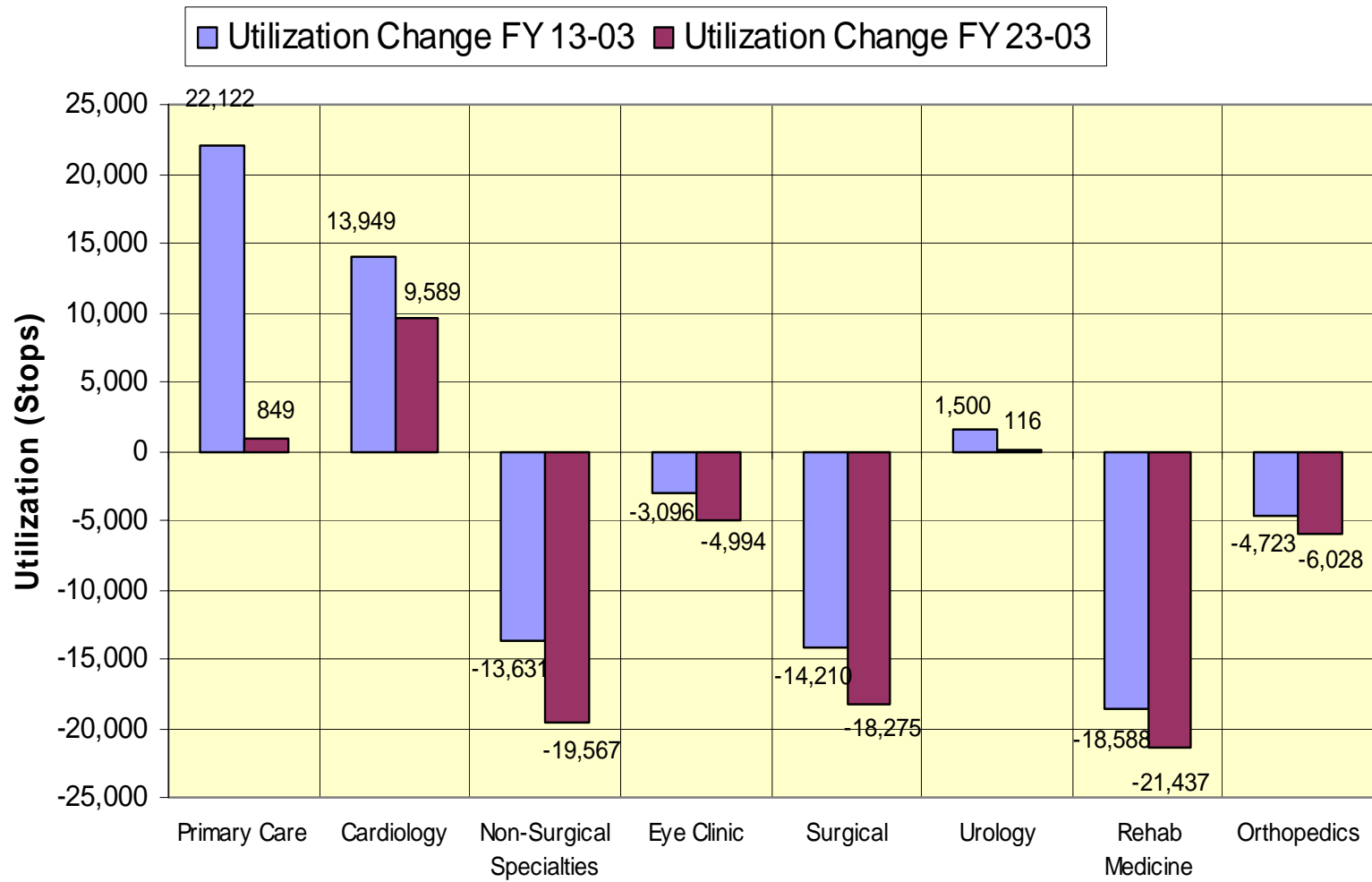


Brooklyn Campus Change in Utilization (Outpatient Mental Health Program)

Utilization Change FY 13-03 Utilization Change FY 23-03

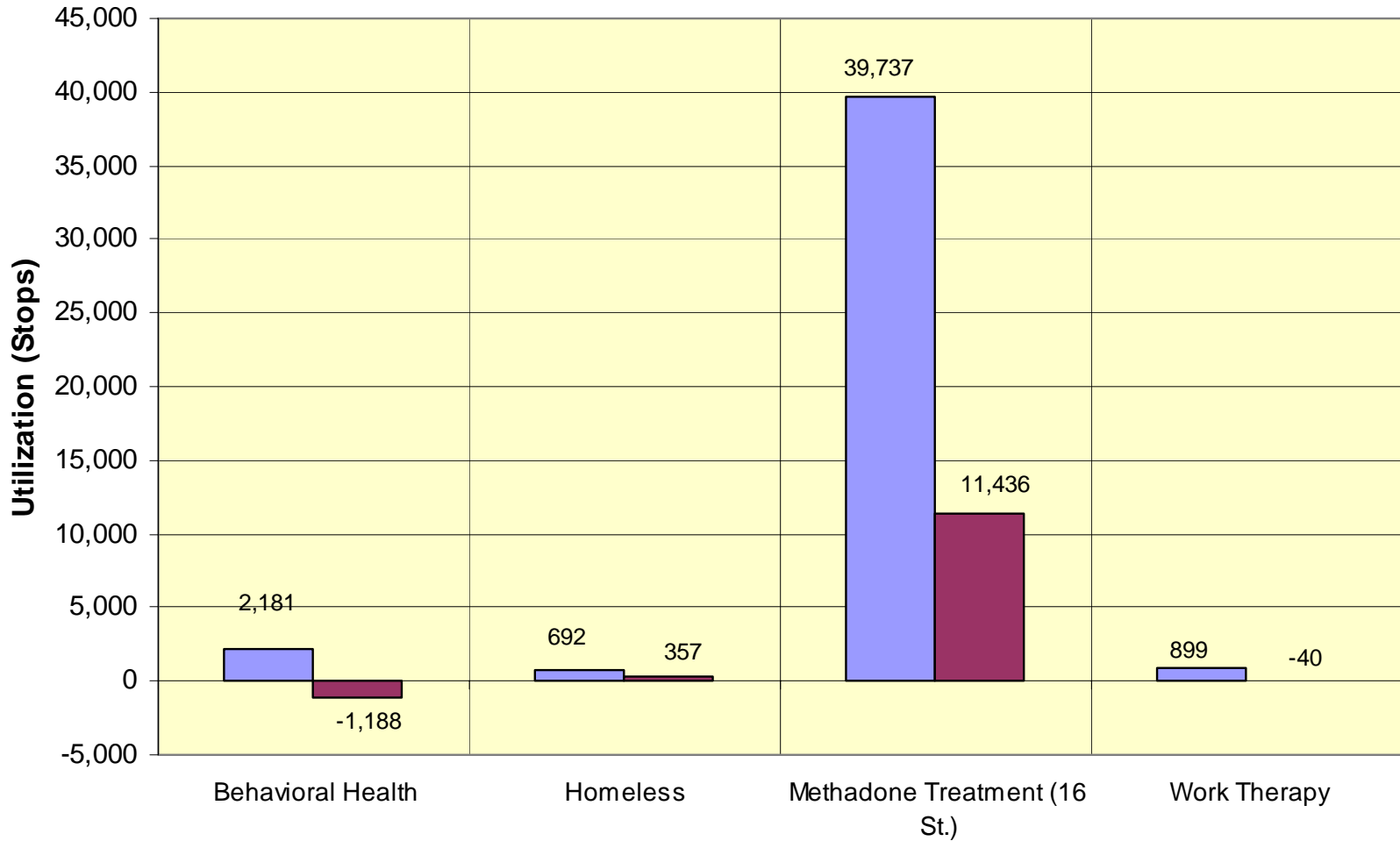


New York Campus Change in Utilization (Ambulatory)



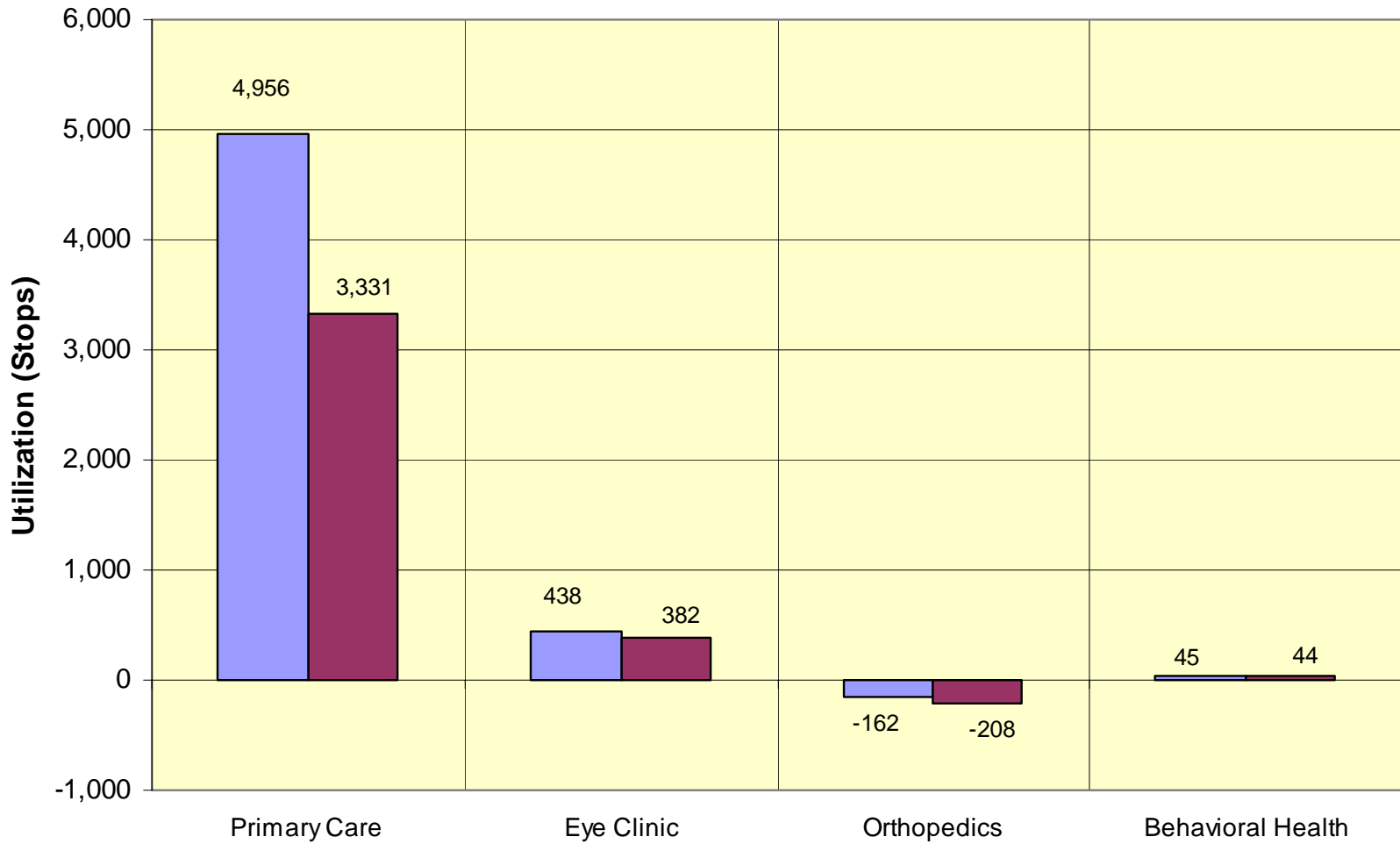
New York Campus Change in Utilization (Outpatient Mental Health Program)

Utilization Change FY 13-03 Utilization Change FY 23-03



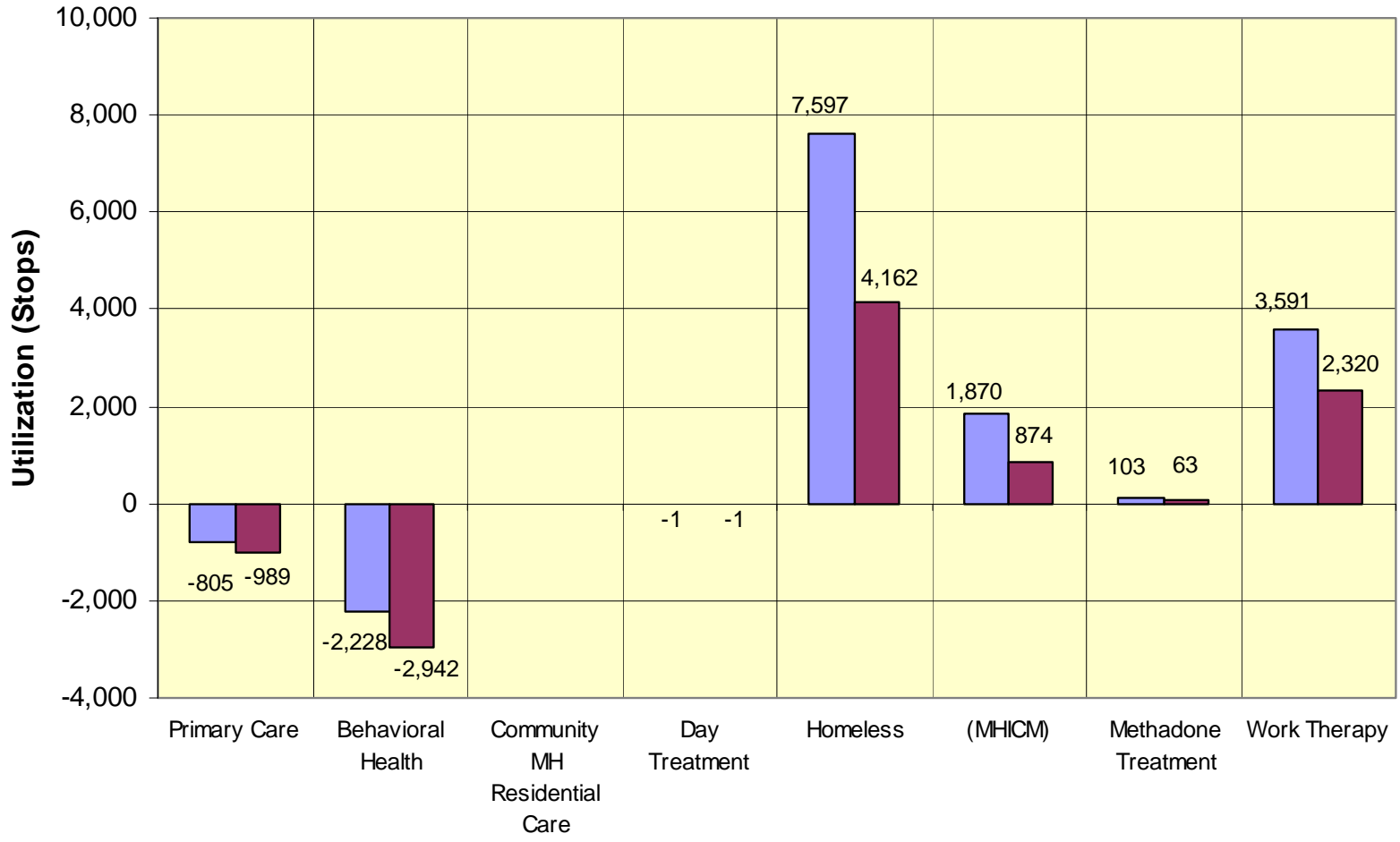
Staten Island CBOC Change in Utilization (Ambulatory and Outpatient Mental Health)

Utilization Change FY 13-03 Utilization Change FY 23-03



Chapel Street CBOC Change in Utilization (Ambulatory and Mental Health)

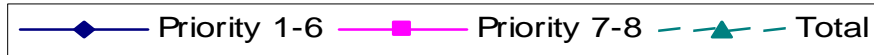
■ Utilization Change FY 13-03
 ■ Utilization Change FY 23-03



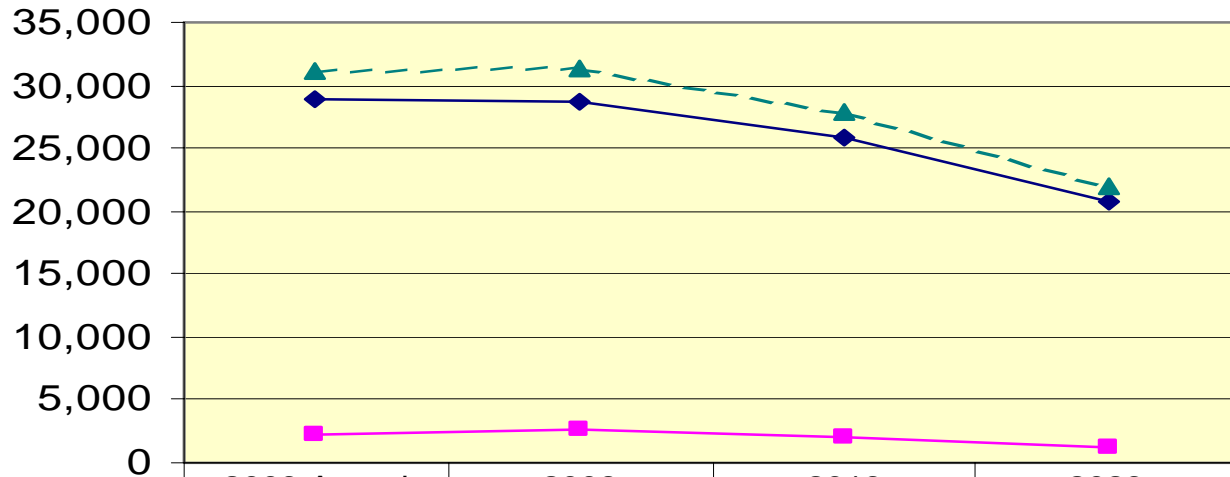
Inpatient Utilization

VA NY Harbor HCS Site Perspective

Projected BDOC by Priority Group Brooklyn Campus



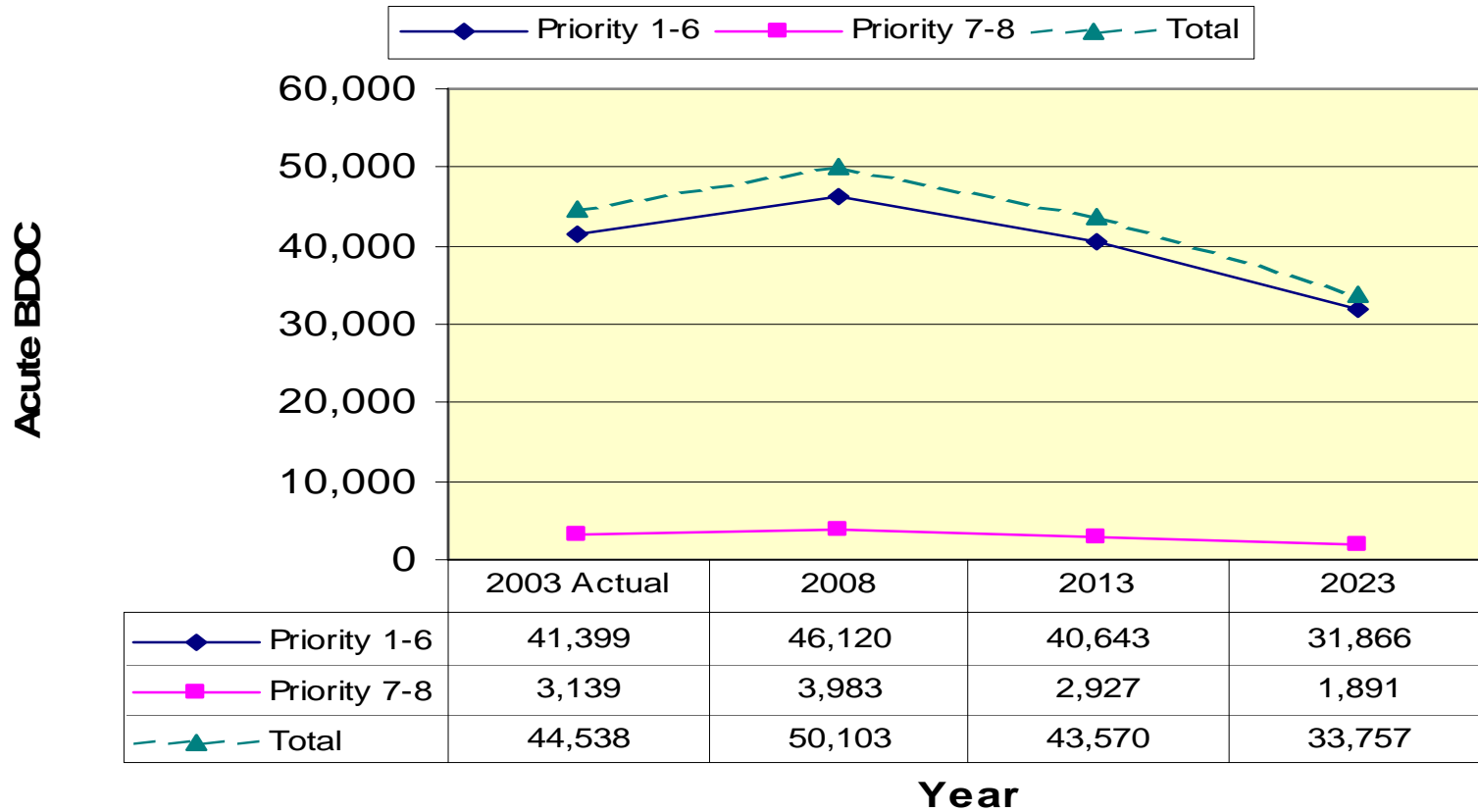
Acute BDOC



	2003 Actual	2008	2013	2023
Priority 1-6	28,933	28,713	25,914	20,767
Priority 7-8	2,169	2,724	1,953	1,241
Total	31,102	31,437	27,867	22,008

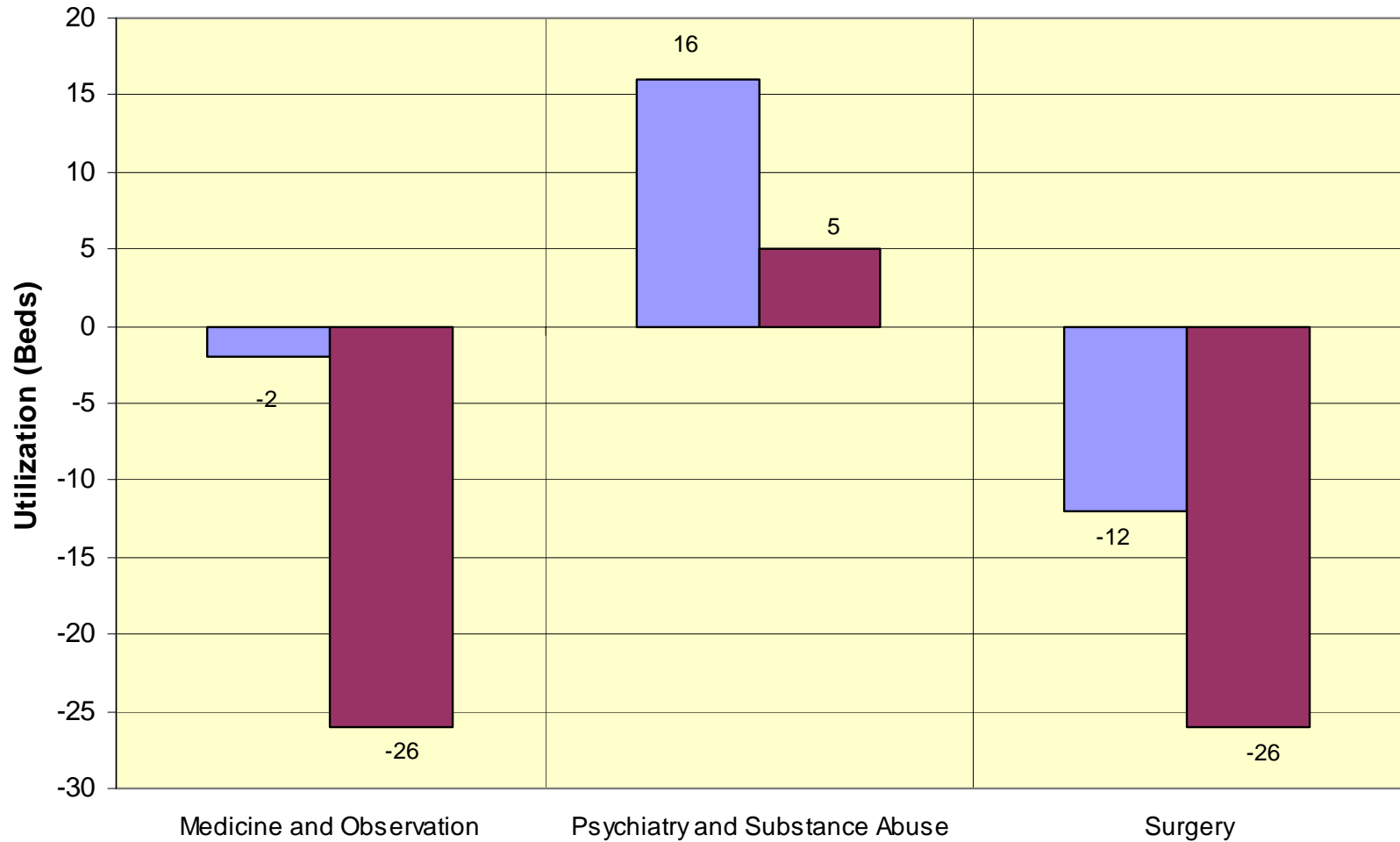
Year

Projected BDOC by Priority Group New York Campus



VA NY Harbor HCS Catchment Area Acute Inpatient Utilization Gap Beds

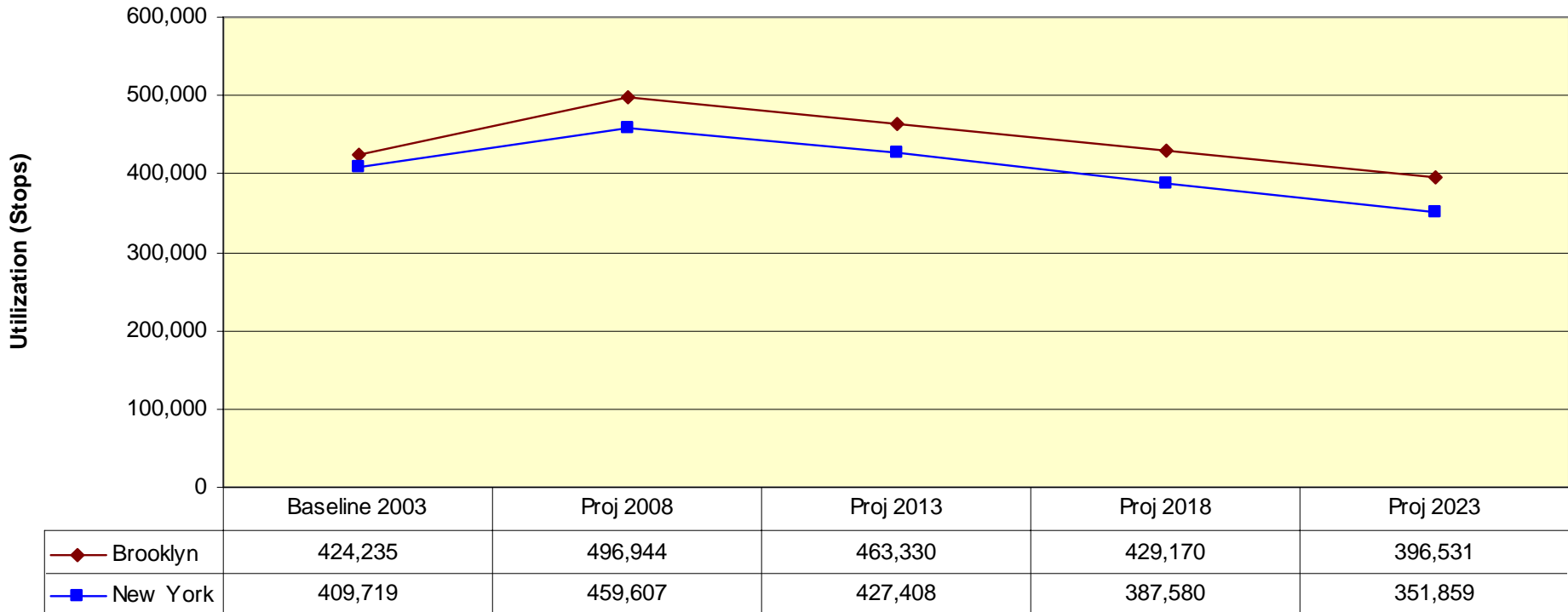
Utilization Change FY 13-03 Utilization Change FY 23-03



Outpatient Utilization VISN Perspective

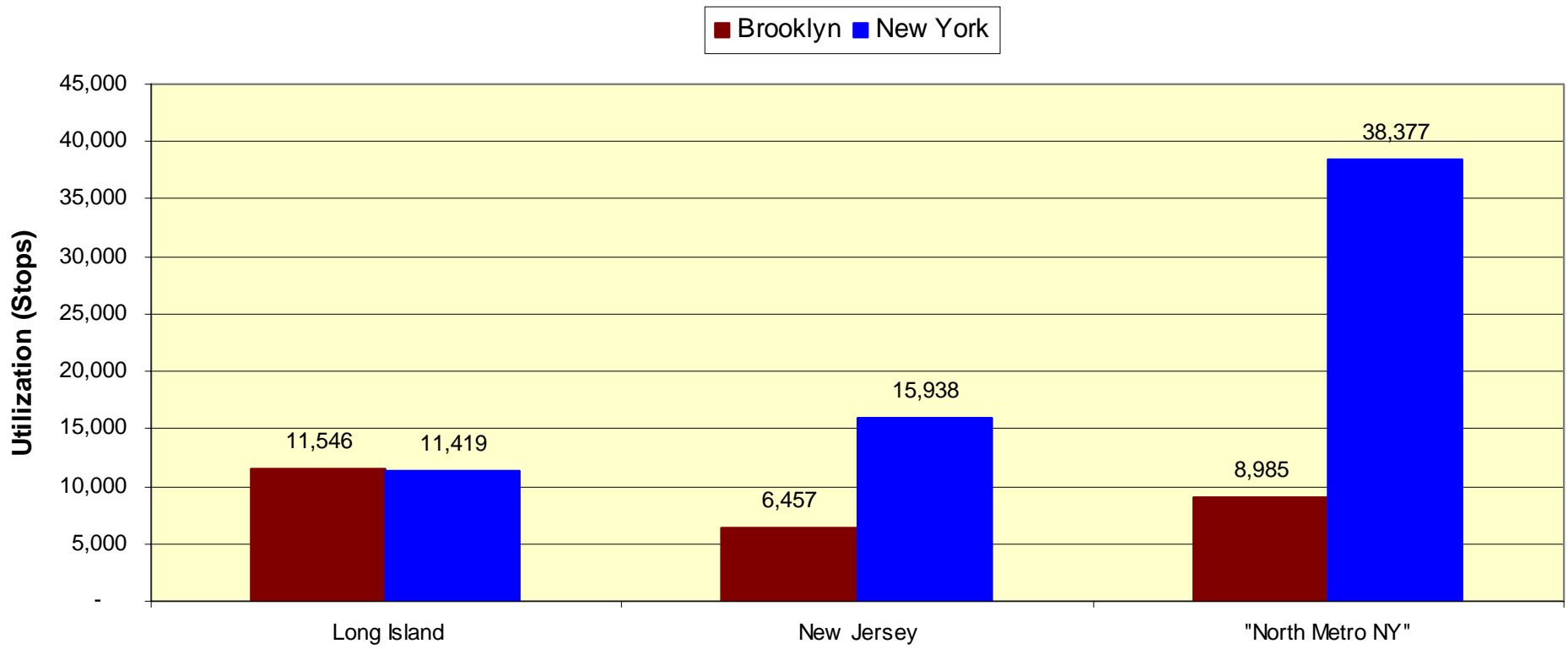
Brooklyn and New York Projected Total Outpatient Workload from VISN 3

◆ Brooklyn ■ New York



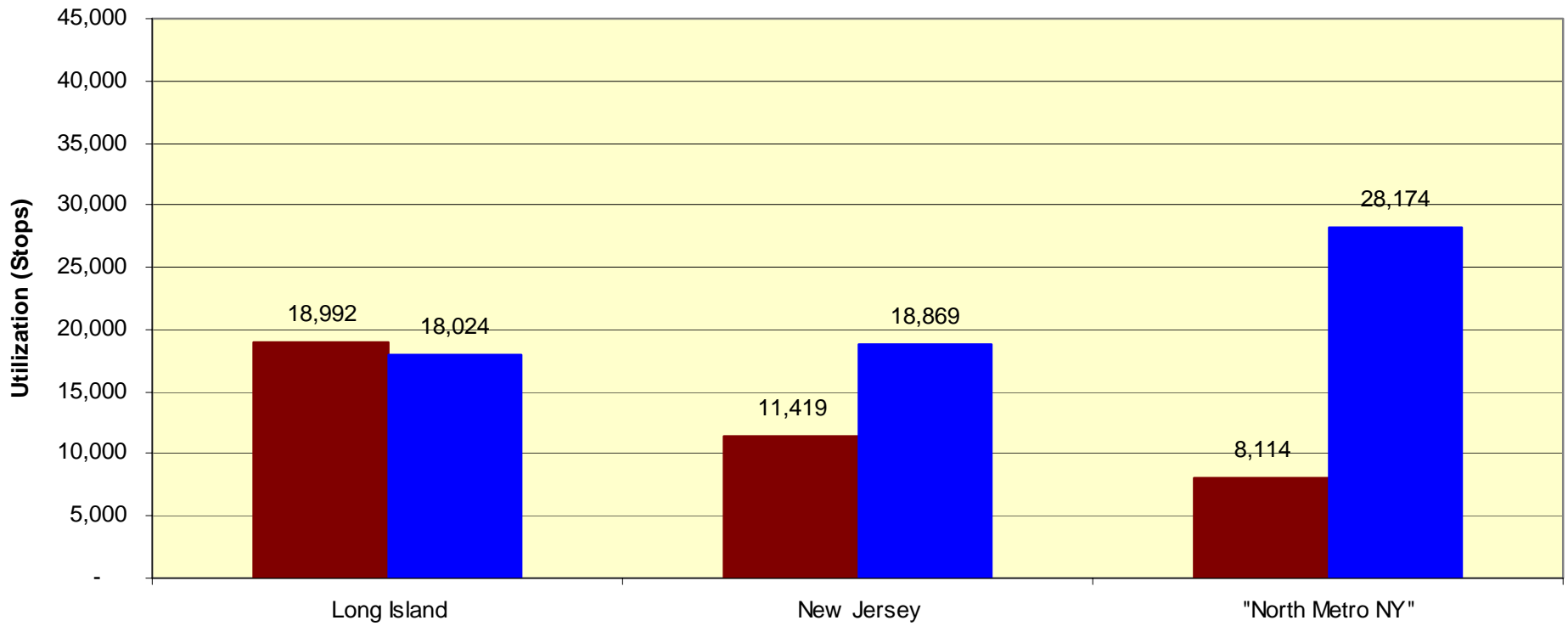
Year

Brooklyn and New York 2003 Actual Ambulatory Workload from VISN 3 Long Island, New Jersey and "North Metro NY" Markets



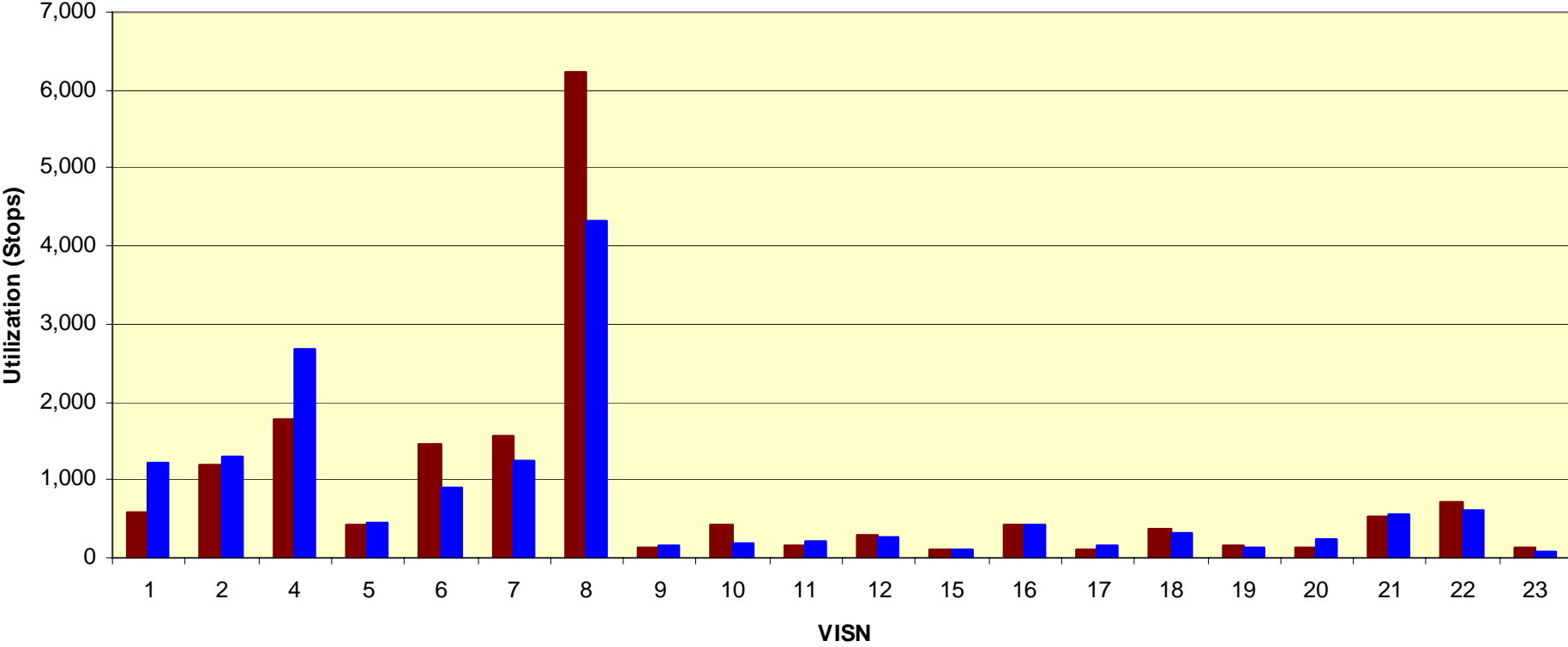
Brooklyn and New York 2023 Projected Ambulatory Workload from VISN 3 Long Island, New Jersey and "North Metro NY" Markets

■ Brooklyn ■ New York



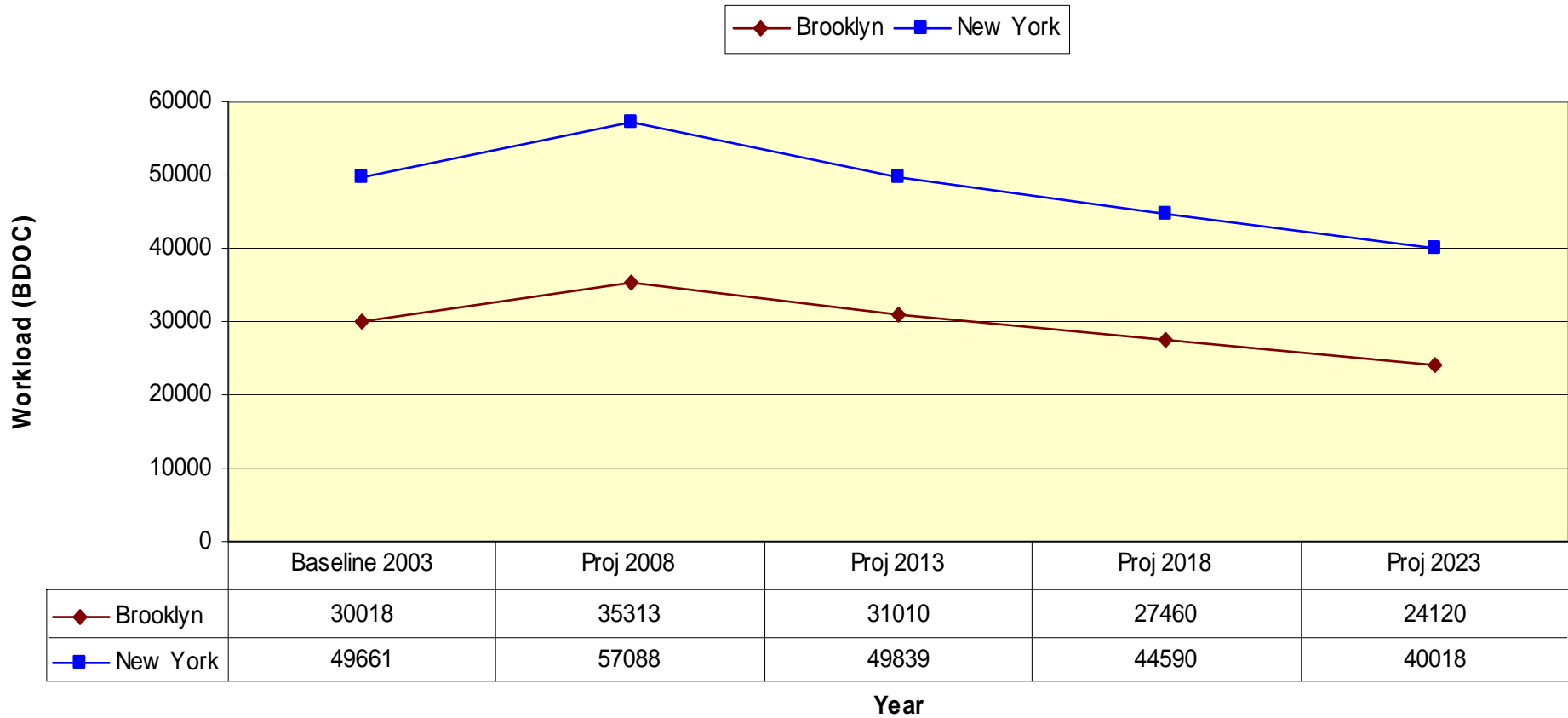
Brooklyn and New York Ambulatory Workload from Other VISNs

Brooklyn New York

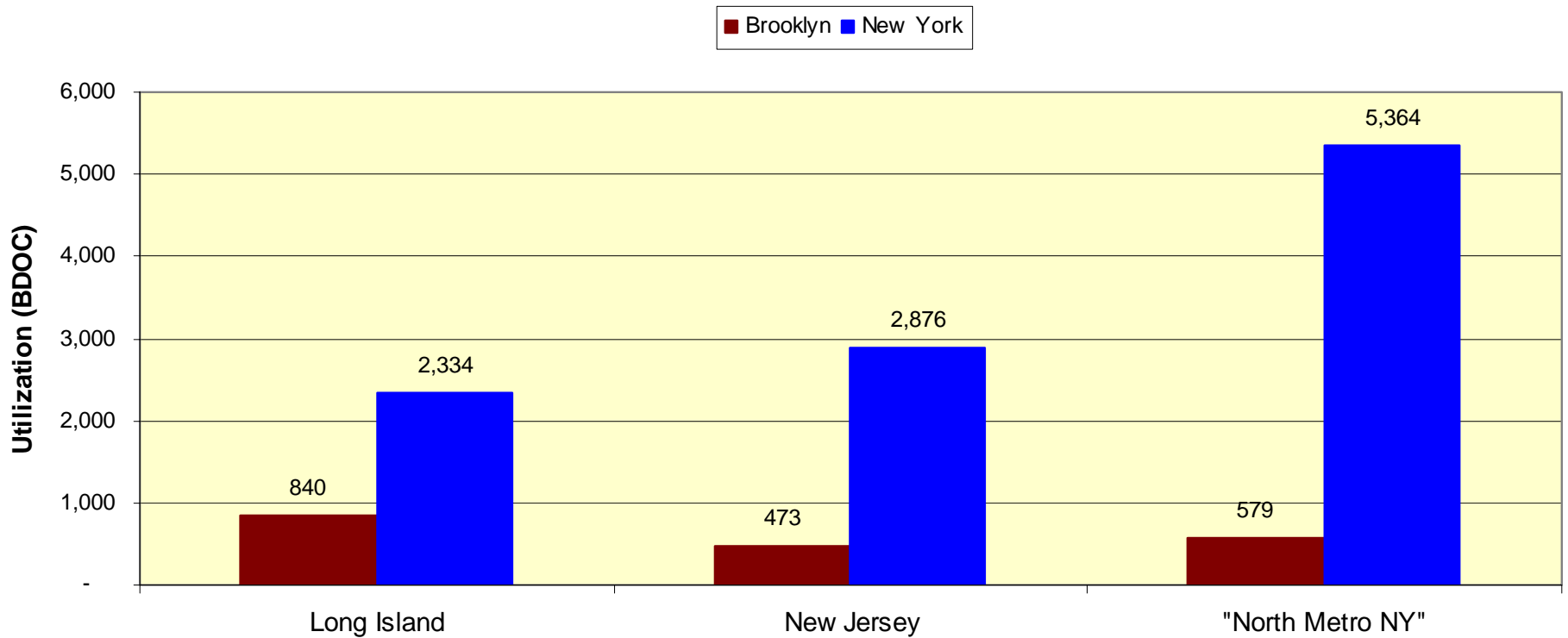


Inpatient Utilization VISN Perspective

Brooklyn and New York Projected Inpatient Workload from VISN 3

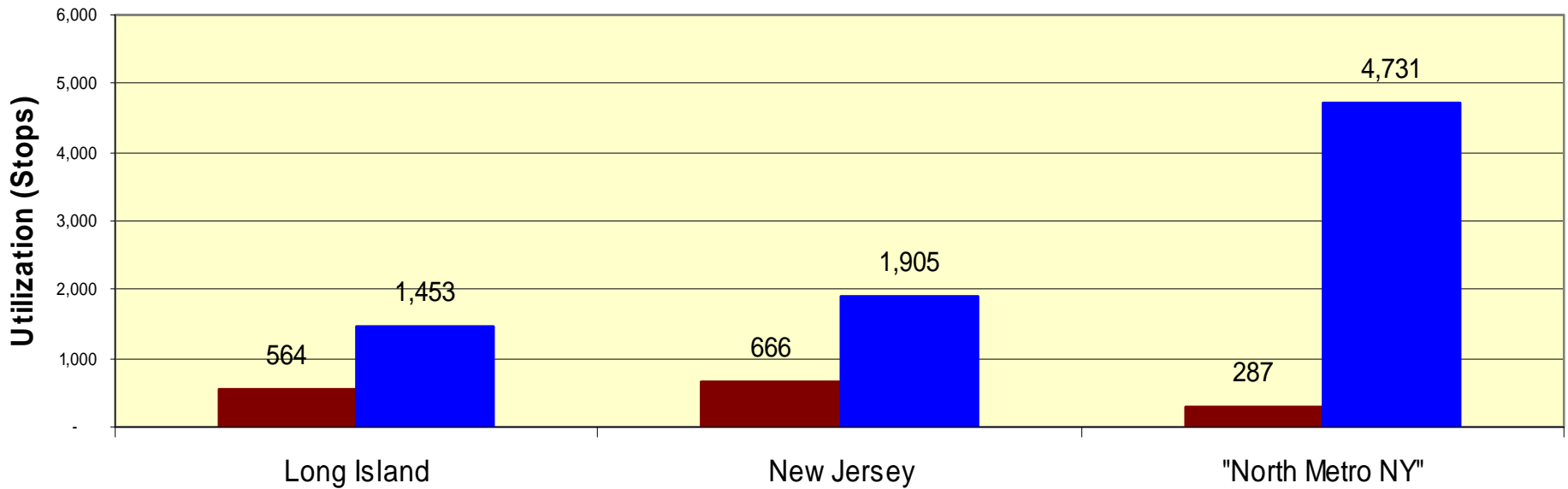


Brooklyn and New York 2003 Actual Inpatient Workload from VISN 3 Long Island, New Jersey and "North Metro NY" Markets



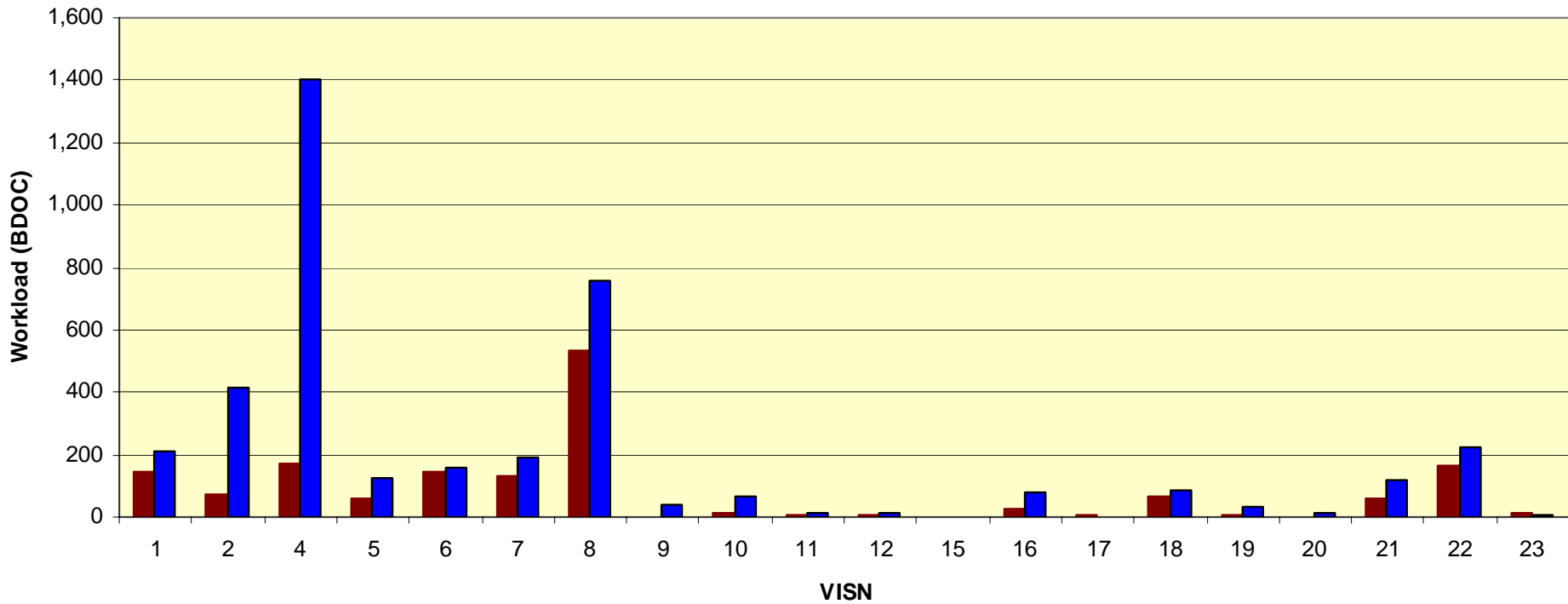
Brooklyn and New York 2023 Projected Inpatient Workload from VISN 3 Long Island, New Jersey and "Metro North NY" Markets

■ Brooklyn ■ New York



Brooklyn and New York Inpatient Workload form Other VISNs Acute Bed Days of Care

■ Brooklyn ■ New York



Summary

- Intricate and inter-related utilization patterns from multiple markets for VA NY Harbor HCS sites are evident
- These data do not show the effects of access, quality, cost, medical affiliation, education and research that need to be considered in this study